

ARTICLE

Underwriting Empire: Marine Insurance and Female Agency in the French Atlantic World

Lewis Wade 

This article offers the first extensive analysis of female agency in the marine insurance industry of early modern Europe. Drawing from a data set of more than four thousand insurance policies signed in the Royal Insurance Chamber in Paris between 1668 and 1672, the article studies the activities of Parisian women within the institution. These policies illustrate that women played a crucial role in the Chamber as underwriters, creditors, commission agents, and policyholders. Moreover, institutional papers and the records of the Parisian admiralty court reveal that women acted ably in defense of their interests when conflicts emerged, although there were limitations to their agency in the Chamber itself. In this way, the article challenges the long-standing perception that underwriting was an exclusively masculine activity in pre-modern Europe. Moreover, it sheds light on the role of women in supporting the maritime and colonial policies of Jean-Baptiste Colbert, Louis XIV's eminent minister, thereby becoming underwriters of France's early Atlantic Empire.

Keywords: insurance, gender, merchants, France

Introduction

On May 2, 1668, France and Spain concluded the treaty of Aix-la-Chapelle, ending the War of Devolution.¹ On the same day, the doors of the Royal Insurance Chamber (Chambre générale des assurances et grosses aventures) opened on rue Quincampoix in central Paris for the first time. The Chamber—which enjoyed the patronage of Jean-Baptiste Colbert, Louis XIV's eminent minister—quickly emerged as a meeting place in the city for underwriters to sign marine insurance policies. Located “over thirty leagues from the sea,” as Jacques Savary put it in 1675 in his best-selling merchant manual, *Le parfait négociant*,

1. On the conclusion of the War of Devolution, see Sonnino, *Louis XIV*, 9–28.

Published online October 06, 2022

© The Author(s), 2022. Published by Cambridge University Press on behalf of the Business History Conference. All rights reserved. This is an Open Access article, distributed under the terms of the Creative Commons Attribution licence (<http://creativecommons.org/licenses/by/4.0>), which permits unrestricted re-use, distribution and reproduction, provided the original article is properly cited.

Paris seems a most unlikely location for a marine insurance market.² Nevertheless, the little-known Chamber flourished in its early years, and Savary encouraged his readers to bring their business here owing to the supposed probity of its underwriters.³

On May 3, 1668, Hugues Desanteul passed through the Chamber's doors, subscribing 500 livres tournois to the *Providence's* voyage from Nantes to Liverpool.⁴ He signed his last policy in the Chamber only nine days later; his brother, Henri Desanteul, signed a policy on his behalf on May 16, but before the end of the month, Hugues Desanteul had died.

With the abrupt end of Desanteul's story, a new one began. On May 30, his widow, Elisabeth Héliissant, entered the Chamber and signed her name on a policy for the first time, underwriting as "the widow of Hugues Desanteul."⁵ Like other merchant widows, Héliissant had most likely developed her mercantile expertise through actively participating in her husband's business, so she was well placed to enter the insurance market only days after Desanteul's death.⁶ She soon emerged as one of the Chamber's leading underwriters: in both 1668 and 1669, she was the sixth most prolific underwriter in the Chamber in terms of amount underwritten.⁷ The underwriting capital she offered facilitated voyages throughout the Atlantic world (and, to a much lesser extent, the Mediterranean world), with her diverse portfolio ranging from Veracruz in the west to Syria in the east, from Greenland in the north to Buenos Aires in the south.

To date, the striking stories of Héliissant and other female underwriters have not been told. Historians of pre-modern marine insurance have not ascribed any real significance to gender in their analyses. Adrian Leonard's seminal edited volume from 2016, *Marine Insurance: Origins and Institutions, 1300–1850*, features no discussion of women in the insurance industry, nor gender more broadly.⁸ This is most likely an issue of sources: put simply, detailed sources on pre-modern insurance are scarce, compounding the perennial challenges of uncovering female agency in sources on commercial activity from this period.⁹ This archival silence weighs especially heavily today, as Lloyd's of London—the world's leading insurance market for centuries, with roots in a seventeenth-century coffeehouse—is currently facing a long overdue reckoning, with its history as a homosocial space casting a deep shadow over its current practices.¹⁰ Female sexual harassment is rife

2. Savary, *Le parfait négociant*, 112–113.

3. *Ibid.* On Savary's endorsement of the Chamber—and its role within a broader Colbertian propaganda campaign in support of the institution—see Wade, "Privilege at a Premium," 263–301.

4. Archives nationales, Paris (hereafter AN), Z/1d/75, fo. 3r^o.

5. ATR.

6. Haggerty, "Miss Fan," 33; Jones and Talbott, "Sole Traders?" For more on widows in economic history, see Moring and Wall, *Widows*. We see a similar phenomenon in the craft guilds of Paris (and beyond), with widows taking over the business of their husbands and assuming the title of master; here, see Lanza, *From Wives to Widows*, 83–120.

7. ATR.

8. Leonard, *Marine Insurance*. In a recent piece, Mallory Hope identifies the role played by a shipmaster's wife in the negotiation of an insurance policy signed in Marseille in the eighteenth century. Hope, "Commercial Networks."

9. Jones and Talbott, "Sole Traders?" 3, 7, 26; Sharpe, "Gender in the Economy," 286; Moring and Wall, *Widows*, 4.

10. On the history of Lloyd's in the early modern period in particular, see Leonard, *London Marine Insurance*; Wright and Fayle, *History of Lloyd's*; Kingston, "Marine Insurance in Britain and America";

throughout the market, and the gender pay gap in the Corporation of Lloyd's remains significant.¹¹

The Chamber's extant registers (now kept in the Archives nationales in Paris) thus constitute an invaluable source for the study of female agency in the early modern insurance industry. This article is built on a data set comprising 4153 policies—among the largest in existence for the study of pre-modern marine insurance—which is accessible online through the AveTransRisk (ATR) database.¹² This data set is based on the Chamber's surviving policy registers from 1668 to 1672, the outbreak of the Dutch War. Fifty-three underwriting entities (forty-seven individuals and six partnerships/companies) signed more than fifty policies in in this period (i.e., an average of ten policies per year); of these, two individuals were women (one of whom was Héliissant), and one partnership was explicitly multigendered. A small group of other women also participated in the market by constructing more modest underwriting portfolios or serving as commission agents.

While a clear minority, women nevertheless made their mark on the Chamber's business. Of the 4153 policies signed between 1668 and 1672, at least 1506 (over 36 percent) were signed by at least one female underwriter/multigendered underwriting partnership, with subscriptions from female underwriters/multigendered underwriting partnerships totaling more than a million *livres tournois*.¹³ Moreover, at least 503 (over 12 percent) involved a female interest, that is, they were signed by a woman as a commission agent and/or had one or more female policyholders.¹⁴ The data set thus offers an extraordinarily rich insight into the role women played in the Chamber's life as underwriters, creditors, commission agents, and policyholders. Moreover, drawing on other Chamber registers and the papers of the Parisian admiralty court (formally, the *table de marbre* of the seat of the admiralty of France in Paris), the article articulates the ways in which women leveraged multiple tools of conflict resolution in service to their interests. Put simply, women could (and did) emerge as leading players in the Parisian marine insurance market. In this way, the article contributes to the growing literature on female agency in the commercial sphere of early modern Europe while simultaneously challenging the long-standing perception that underwriting was an exclusively masculine activity.

Furthermore, the article puts forward Parisian women like Héliissant as notable actors in colonial development, supporting Colbertian projects and overseas ventures at a critical

Kingston, "Governance." On Lloyd's reckoning with its culture of sexism, see Finch, "Old Daytime-Drinking, Sexual-Harassing Ways"; Williams-Grut, "Lloyd's."

11. Finch, "Old Daytime-Drinking, Sexual-Harassing Ways"; on the gender pay gap, see Lloyd's, "Gender and Ethnicity Pay Gap Reports."

12. For point of comparison, Jeroen Puttevels and Marc Deloof's study of Juan Henriquez's famous insurance ledgers from sixteenth-century Antwerp comprises 1621 policies. Puttevels and Deloof, "Marketing." Potito Quercia's collection of six thousand policies from early modern Majorca is the only larger data set of which I am aware. Quercia, *La gestione dei rischi marittimi*; Quercia, *Le Assicurazioni marittime maiorchine* (both cited in Ceccarelli, *Risky Markets*, 7).

13. I say at least 1506 here, as it has not been possible to ascertain the gender of each underwriter. Moreover, it is impossible to know if women were involved in the underwriting companies that operated in the Chamber. Finally, some policies were signed on behalf of unnamed underwriters who may have included women. This figure does not contain the ninety signed by Chupin on behalf of her husband, discussed later in the article.

14. I say at least 503 here, as many policies were signed on behalf of unnamed parties, or companies whose partners are not listed. It is therefore impossible to ascertain the gender of all policyholders.

juncture in France's Atlantic Empire.¹⁵ The 1660s and 1670s marked a period of intense state support for the development of maritime and colonial commerce, with the Chamber emerging alongside the West India Company (established in 1664), East India Company (1664), Northern Company (1669), and Levant Company (1670).¹⁶ Within Colbert's broader economic policy, which strove to reorient Parisian capital toward maritime, commercial, and colonial investment, the Chamber had a key role to play: among the plethora of Atlantic voyages that female underwriting capital and credit propelled were private slaving voyages, permitted by Colbert when the West India Company proved unable to meet colonial demand for enslaved people.¹⁷ Moreover, female underwriters and multigendered underwriting partnerships even protected the West India Company itself at the outbreak of the Dutch War in 1672. Here, the agency of Parisian women parallels that of women in London and elsewhere in the anglophone Atlantic, which has been explored in depth by Amy Froide and others.¹⁸ Nevertheless, this agency had its limits: women in the Chamber faced formal and informal barriers that restricted their ability to participate in the institution's daily life, and the rise of a chartered company in 1686 almost entirely eradicated female agency in the Parisian marine insurance market.

The Royal Insurance Chamber: Women, Portfolios, and Commissions

Using the ATR database, this section explores the activities of female actors in the Chamber as underwriters and commission agents. It tracks how these actors leveraged the Chamber and its resources to build underwriting and commission portfolios that responded to shifts in the political climate over time.

Here, I draw (and build) on a burgeoning literature that is reassessing the role of women in the development of early modern commercial and financial networks and articulating their significance as agents within familial enterprises and as actors with their own economic autonomy.¹⁹ Similarly, recent works on gender and the institutional history of early modern Paris have stressed the city's greater accommodation of female labor and capital in comparison to other cities. Paris was the "acknowledged European capital of all-female guilds," with four such guilds and two mixed-sex guilds in the seventeenth and eighteenth centuries.²⁰ Among the all-female guilds was the seamstresses' guild, established in 1675 as part of the broader Colbertian reform of the guild system: here, Colbert was in many ways acknowledging the "strong sexual division of labor" that had emerged in prior decades, whereby seamstresses—in defiance of the tailors' guild's monopoly—produced clothing for women and children, leaving

15. On France's early Atlantic empire, see Roulet, *Compagnie des îles de l'Amérique*; Pritchard, *In Search of Empire*; Wood, *Archipelago of Justice*.

16. Horn, *Economic Development*, 116.

17. On Colbert's broader economic policy, see Wade, "Privilege at a Premium," 46–74.

18. Here, see notes 19 and 25.

19. Among many others, see Jones and Talbott, "Sole Traders?"; Haggerty, "Miss Fan"; Walker, "Pursuing Her Profits"; Damiano, "Agents at Home"; Pizzoni, *British Catholic Merchants*, 169–186.

20. Ogilvie, *European Guilds*, 238–239, 245. For discussion of all-female guilds, see Crowston, *Fabricating Women*, 179–182.

the tailors to manufacture men's clothing.²¹ Outside the all-female and mixed-sex guilds—which, after all, represented only a small percentage of all Parisian guilds—the remainder imposed restrictions on female participation, but all (bar the sword makers' and wine tasters' guilds) “affirmed the right of a widow to retain and continue to work in her late husband's shop and workshop.”²² Consequently, by the end of the eighteenth century, 7 to 8 percent of all Parisian masters were widows.²³ Moreover, women (especially widows) were major investors in the French royal debt (*rentes* in the Hôtel de Ville de Paris), and the development of the notarial system for facilitating private credit brought female capital into the market, with Parisian notaries using their information resources to connect women with reputable borrowers.²⁴ In this way, Parisian women were able to build investment portfolios of their own, often with the aim of accruing the resources necessary for a comfortable retirement.²⁵ While single women and widows were best placed to make investments in early modern France—on their husbands' deaths, widows became “heads of households and enjoyed the legal rights associated with that position,” although social pressures often constrained their activities—Julie Hardwick's work outlines the ways in which married women still exercised considerable agency in local economies, issuing and seeking credit in an age when the household was becoming increasingly intertwined with the market.²⁶

The Royal Insurance Chamber complemented the Colbertian guild reforms and the notarial credit system. It established no barriers to participation: its by-laws enshrined the principle that anybody with a good reputation could conduct business.²⁷ Admittedly, a first glance at the Royal Insurance Chamber's membership list from early 1672 (Table 1) offers little indication of female agency: the list enshrines the Chamber's highly hierarchical nature, with a core group of thirty men (the first rung of members) recognized as the institution's leading figures. When the Chamber held meetings to discuss institutional business, these men were guaranteed a seat where others were not, creating a marked spatial division between these men and the other members in accordance with a perceived division in reputation and commercial know-how. As we will see later, these men were typically accorded a leading role in the Chamber's daily life, especially through resolving disputes as arbiters.²⁸ The second rung was reserved for the remaining members who offered their services, be it as an underwriter or as a commission agent. In this rung, a single woman (Mme. Vankessel) is listed. As we will see later, Vankessel was only a modest player in the market, offering her services as a commission agent.

21. Crowston, *Fabricating Women*, 173–175, 187–193.

22. Moring and Wall, *Widows*, 152–153. For more on women in the Parisian guilds, see Lanza, *From Wives to Widows*, 83–120.

23. Moring and Wall, *Widows*, 152–153.

24. Collins, “Economic Role of Women”; Hoffman, Postel-Vinay, and Rosenthal, *Priceless Markets*, 2–5, 166–168.

25. For how women in eighteenth-century London built portfolios in a rather different way (i.e., by engaging with the stock market), see Froide, *Silent Partners*.

26. Hardwick, “Widowhood and Patriarchy”; Hardwick, *Family Business*; Lanza, *From Wives to Widows*, 4. On the legal position of widows (and women more broadly) in early modern France, see Lanza, *From Wives to Widows*, 21–50.

27. AN, Z/1d/73, fos. 10r^o–13v^o.

28. On these benefits, see Wade, “Privilege at a Premium,” 46–74, 263–301.

Table 1. The Chamber's membership, 1672

President: Francesco Bellinzani	
First rung	Second rung
Henri Desanteul	Denis Day
Robert Sanson	Simon Boirat
André Petit	Guillaume de la Marre
Jacques Rey	Nicolas Maillet
Gilles Mignot	Jacques Petit
Robert Pocquelin	M. Crouzet
Anthoine Desmartins	M. Herinx
Charles Lhuillier de Creabé	Robert Boietet
M. Maillet and M. Pocquelin	Jean-Baptiste Forne
Anthoine Sadoc	Étienne Supligeau
Guillaume Debie	Nicolas Courtesia and Georges Benson
Pierre Desanteul	Denis Dusault
Alexandre Vinx	Guillaume Bar
Jacques Richard	M. Deresne and M. Dorigny
M. Moret	M. Bernier
Antoine de Gomont	Pierre Denison
Nicolas Chanlatte	M. Regnault
François Le Febvre	Philippe Morisse
Oudard Thomas de Lisle	Étienne Margas
Pierre Formont	Jean Dumont
Launay Moreau	Jacques Dekessel and Compagnie
Louis Froment	Mme. Vankessel and M. Couvorden
Gaspart Vangangelt	Guillaume Haslé and Bonnaventure Rebillé
Étienne Lenfant and Henri de Vaux	M. Le Couteux
Denis Rousseau	Romul Valenty
Jean Roussel	M. Marchand
Jean-Anthoine Vanopstal	M. van Vayemberg
Pierre Cadelan	M. Desvieux
	Charles Beguin
	Guillaume Aubry

Source: AN, Z/1d/73, fos. 16r^o–17r^o.

However, the male-centered list above belies the significance of women in the Chamber's activities, who, like men, were able to draw on the institution's resources to conduct their business. All business in the Chamber centered on the registry, where the registrar (Jean Le Roux, then, after his death, Christophe Lalive) received requests for coverage from prospective policyholders or commission agents (the latter of whom secured coverage on behalf of principals located outside Paris) before drawing up the policies and then circulating them within the Chamber for underwriters to sign. Besides keeping exacting records of every insurance transaction through the policy registers on which this article draws, the registrar was also charged with maintaining correspondence with the ports, sharing any news gleaned from these exchanges in the Chamber's meetings on the second and fourth Thursday of each month.²⁹ Furthermore, on Colbert's instruction, France's admiralties and foreign consulates were tasked with sending information pertaining to maritime affairs and ship movements to

29. AN, Z/1d/73, fos. 10r^o–13v^o.

the registry and the Chamber's president, Francesco Bellinzani, to aid the underwriters' activities.³⁰ While it is impossible to know if either the registrar or the president was selective in revealing news to particular underwriters, an extensive word-of-mouth network of information exchange likely existed within the Chamber that made it hard to keep secrets for long. Moreover, anybody who felt out of the loop could simply choose to follow the lead of the more experienced underwriters by underwriting the policies the latter signed. Thus, female underwriters may not have been guaranteed a seat at the table during the Chamber's meetings, but the Chamber's institutional structure ensured they had access to the information they needed to develop sound portfolios. Moreover, women from commercial families could tap into their own networks to inform their decision making as well.

Certainly, men in the Chamber did not doubt the information Parisian women had at their disposal, and even had confidence in the latter's commercial expertise. André Petit was among the Chamber's most senior underwriters, but trusted his wife, Françoise Chupin, to sign ninety policies on his behalf between 1668 and 1670, comprising over a third of his portfolio in these years (a total of 264 policies). Chupin's judgment was sound, as the premium income from these policies of 2714 livres tournois more than outweighed the loss of 500 livres recorded on a single policy.³¹ Chupin maintained a modest portfolio in her own name too: she underwrote five policies in 1669 and sixteen in 1671, totaling 12,800 livres in subscriptions. The Chamber's registrar was clearly comfortable allowing Chupin to sign contracts in her own name, although (at least theoretically) she would have needed her husband's express permission to do this.³²

As we have already seen, Chupin was not the only female underwriter in the Chamber; indeed, she was one of a handful, although she seemed to be the only one who was married (see Table 2). We have already encountered Héliissant, a leading underwriter in the Chamber who put much effort into crafting her portfolio after her husband's death. Figure 1 tracks her rate of return on capital at risk (hereafter ROCAR rate) as compared with the rate across the Chamber as a whole. This rate—used to good effect elsewhere in the literature—allows us to make meaningful comparisons between portfolios of all shapes and sizes.³³ It is calculated as follows, using the data summarized in Table 3:

$$\frac{\text{Gross premium income} - \text{losses}}{\text{Total underwritten} - \text{gross premium income}}$$

Héliissant's early portfolio was remarkably diverse, covering ninety-six different named locations across the Western Hemisphere, but centered heavily on the shipping of Atlantic France, especially the ports of Saint-Malo, Bayonne, and Nantes. Accordingly, the voyages she insured frequently comprised those typical of these ports: Saint-Malo and Bayonne were key

30. This is discussed in detail in Wade, "Privilege at a Premium," 77–85. For more on Bellinzani, see the rest of Wade, "Privilege at a Premium."

31. ATR.

32. On how married women's economic activity was often endorsed de facto by French courts, even when such activity took place without their husbands' permission, see Hardwick, *Family Business*.

33. Puttevils and Deloof, "Marketing."

Table 2. The underwriting of the Chamber’s leading female underwriters across the period 1668 to 1672

Underwriters	1668–1672								
	No. ^a	Total underwritten ^b	Min.	Max.	Mean	Median	GPI (range) ^c	Losses	ROCAR (range) ^d
Anne Jousse and Jean-Anthoine Vanopstal	976	560,540	100	4000	574	500	≥39,423 ≤42,657	33,70 9	≥1.10 ≤1.73
Elisabeth Héliasant	628	444,047	50	5000	707	500	≥32,852 ≤34,580	21,16 0	≥2.84 ≤3.28
Elisabeth Lefebvre	138	71,050	100	4000	515	300	≥7408 ≤7718	8900	≤−1.87 ≥−2.34
Françoise Chupin	21	12,800	500	1000	610	500	703	—	5.81

Source: ATR, based on data from AN, Z/1d/75-8.

^a Number of policies signed.

^b In livres (as with all the subsequent columns, excluding ROCAR).

^c Gross premium income.

^d Return on capital at risk.

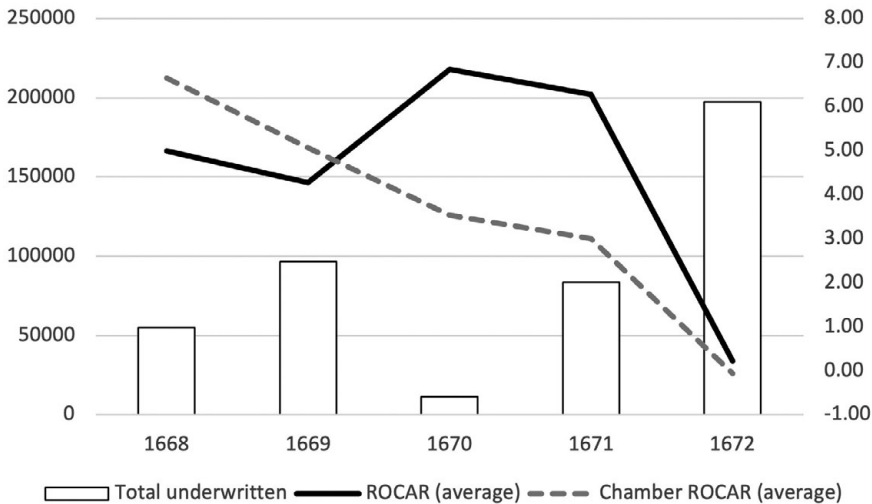


Figure 1. Elisabeth Héliasant’s underwriting in the years 1668–1672, with the average return on capital at risk (ROCAR; in percent) alongside the Chamber’s average recorded return on capital at risk (in percent). For why these rates are averages, see text.

Source: ATR, based on data from AN, Z/1d/75-78.

hubs for Newfoundland cod fishing, which figured especially prominently in her portfolio.³⁴ At the same time, she frequently underwrote Iberian voyages, particularly those centered on Cádiz, which housed a strong French community participating in illicit trade with the Spanish New World.³⁵ With this in mind, it is not surprising to see Héliasant joining others in the

34. On Newfoundland cod fishing, see notes 40 and 42.

35. Cole, *Colbert*, 405; Hillmann, *Corsairs of Saint-Malo*, 32–34.

Table 3. The underwriting of Elisabeth Héliissant across the period 1668 to 1672

Year	No. ^a	Total underwritten ^b	Min.	Max.	Mean	Median	GPI (range) ^c	Losses	ROCAR (range) ^d	Mean premium rate
1668	84	55,050	250	1500	655	500	3093	500	4.99	5.87
1669	134	96,600	200	2000	721	550	5206	1300	4.27	5.62
1670	16	11,500	400	1000	719	650	737	—	6.84	6.27
1671	64	83,500	300	5000	1305	1000	4931	—	6.28	6.24
1672	330	197,397	50	3000	598	500	≥18,886 ≤20,615	19,360	≥−0.27 ≤0.71	10.62
Overall	628	444,047	50	5000	707	500	≥32,852 ≤34,580	21,160	≥2.84 ≤3.28	—

Source: ATR, based on data from AN, Z/1d/75-8.

^a Number of policies signed.

^b In livres (as with all the subsequent columns, excluding ROCAR and mean premium rate).

^c Gross premium income.

^d Return on capital at risk.

Chamber in underwriting the Spanish silver fleet to and from Veracruz and Cartagena de Indias.³⁶ Underwriters evidently had no qualms about the illegality of this commerce, but Atlantic intermediaries (especially merchants from Saint-Malo) were able to negotiate coverage in Paris without being required to name the beneficiaries of the policies, thereby obscuring the precise details of who was engaging in this trade.³⁷

For reasons unknown, Héliissant scaled her underwriting back in 1670. She re-emerged in the Chamber briefly in August 1671, before entrusting her brother-in-law, Henri Desanteul, with her portfolio from October until the end of the year. While Desanteul was signing policies with premium rates that were remarkably consistent with his sister-in-law's risk appetite from prior years (see Table 3), the subscriptions he made were larger than Héliissant had typically made, with the mean and median subscription in her portfolio almost doubling from the prior year. Because her portfolio was smaller in these years, Héliissant was able to escape with no losses, leaving her a ROCAR rate higher than she had achieved in preceding years.

Yet dark clouds were looming on the horizon. In his quest for *gloire* on the European stage, Louis XIV had signed the Secret Treaty of Dover in 1670, enshrining a Franco-English military alliance against the Dutch that all but ensured war in the years to follow. In April 1672, Louis declared war; rapid gains in the United Provinces soon gave way to a protracted conflict, leaving France's Atlantic coastline and its Caribbean and Canadian colonies vulnerable to Dutch privateers.³⁸ It was inevitable the Chamber's underwriting would be transformed by this ubiquitous elevation of risk.

Héliissant took back control of her portfolio in early 1672. By this point, it was an open secret that war was imminent: it was only a matter of *when* war would be declared.³⁹ In this climate, Héliissant made prudent decisions to try to prevent major wartime losses. Following a common

36. ATR.

37. *Ibid.*

38. For a narrative of the Dutch war, see Lynn, *Wars of Louis XIV*. On the activities of Dutch privateers with the onset of war, see Barazzutti, "Les Néerlandais."

39. Here, see Wade, "Privilege at a Premium," 148–186.

underwriting strategy (as we will see later), she dramatically increased the size of her portfolio: her subscriptions for the year totaled 197,397 livres, more than double the size of her portfolio at its prior peak in 1669. Yet she made smaller subscriptions to the policies she *did* sign, with her mean and median subscriptions consequently falling to 598 and 500 livres, respectively (see Table 3). In short, she signed many more policies than ever before (indeed, more than she had signed in the years 1668 to 1671 combined), but for smaller amounts. The strategy was clear: Héliasant was spreading her exposure to risk, hoping that her premium income would cover the (smaller) losses that would inevitably follow from insuring so widely with the outbreak of war.

To an extent, she also tried to diversify her portfolio, which now covered 125 named places in the Western Hemisphere. Still, as we can see in Figure 2, Atlantic ports (namely Le Havre, La Rochelle, Bordeaux, and Bayonne) underpinned the portfolio in 1672. Moreover, her portfolio became imbalanced through a focus on three particular types of voyage: cod fishing voyages in Newfoundland, whaling voyages in Greenland, and the reinsurance of voyages in the Mediterranean.

In underwriting Newfoundland fishing voyages and Greenland whaling voyages, Héliasant and other underwriters supported the training and employment of novice mariners—essential

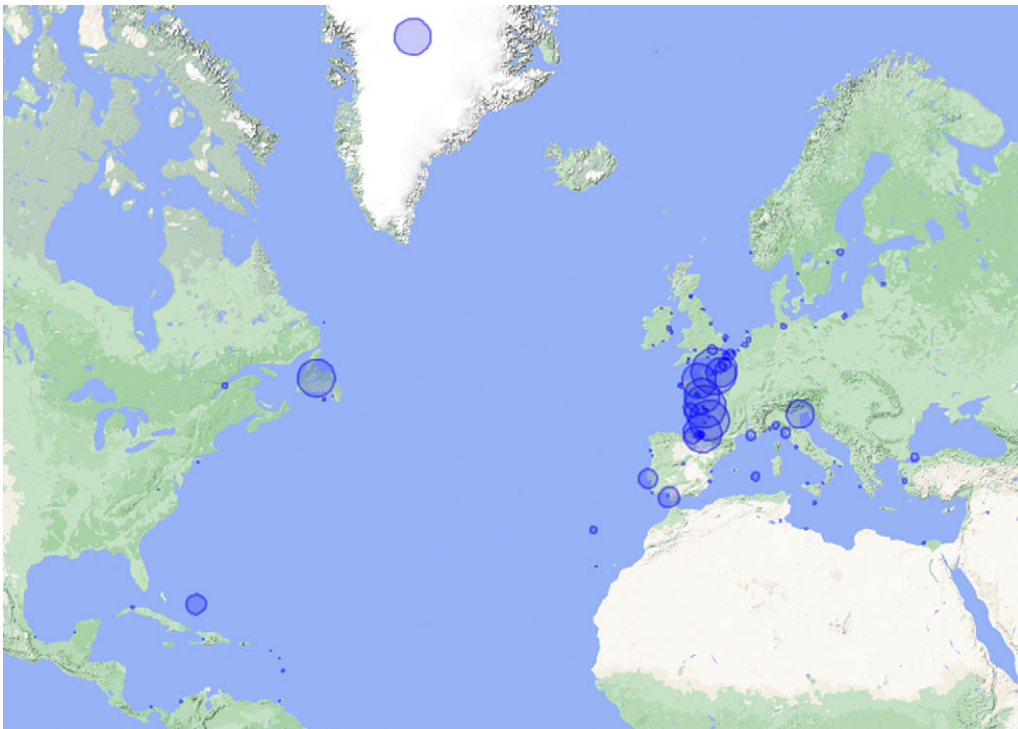


Figure 2. Elisabeth Héliasant's underwriting portfolio in 1672. The size of the circles corresponds with how frequently each port/place/country (as named in each policy) appeared in her portfolio. NB: Buenos Aires is not included in the image.

Source: ATR, Google Maps.

to the state in creating a pool of sailors that could sustain overseas commerce and serve in the French navy.⁴⁰ Newfoundland cod was often transported to the Mediterranean for sale in the markets of Iberia, southern France, and Italy, while whales were a source of various materials (chiefly, whale oil, used to make soap) that facilitated French and Dutch industry.⁴¹ Yet the long Atlantic journeys these operations required left vessels exposed after the outbreak of war, prompting merchants, investors, and shipowners to seek coverage from the Chamber, which Héliissant and other underwriters willingly provided.⁴²

Perhaps recognizing the risks they were bearing in the Atlantic, Héliissant and others tried to rebalance their portfolios through reinsuring Mediterranean voyages, which had different risk profiles. The principal source of this business was Pierre de la Roche, a French merchant based in Venice who reinsured policies he signed there through a Parisian commission agent. Yet these efforts backfired: North African corsairs succeeded in a series of captures, resulting in losses that compounded those sustained in the rest of the portfolio.⁴³

Did Héliissant manage to emerge from the year in the black, despite these losses? It is impossible to say for sure: in late 1671 and early 1672, underwriters in the Chamber started inserting war clauses into their contracts, requiring policyholders to pay an agreed augmentation in the premium in the event war broke out.⁴⁴ The Chamber's policy registers do not make clear if these clauses were ultimately triggered or not for each policy. Thus, in Table 3, I express Héliissant's gross premium income (GPI) as a range (the smallest figure assuming these clauses were *never* triggered and the largest assuming the clauses were triggered in every case) and use the mean to display the ROCAR rate in Figure 1. Her losses from the year totaled 19,360 livres, but her GPI could have been as little as 18,886 livres (an uncomfortable loss of 474 livres, but not catastrophic in comparison to other underwriters in the Chamber, as we will see) or as great as 20,615 livres (leaving a quite handsome profit of 1255 livres).

While her returns for the year are ambiguous, Héliissant certainly fared better than other widows following the outbreak of war. Elisabeth Lefebvre (known in the Chamber's policy registers as "Widow Lescot") entered the Chamber in 1671 with a modest portfolio; like Héliissant, she likely treated underwriting as a means of diversifying her commercial investments.⁴⁵ Having dipped her toe in the water in 1671, and sustained no losses, she made the fateful decision to gamble on war risks. While it was common for underwriters to withdraw from the market in the face of war, with little appetite for the uncertainty it brought, others joined in the hopes of making speedy profits from high premiums.⁴⁶ Lefebvre was among them: her portfolio amounted to 62,050 livres in 1672, centering on Newfoundland, Greenland, Iberian, and Mediterranean voyages (see Figure 3). The mean premium rate for the policies she signed sat 1.8 percent above the mean across all the Chamber's policies, indicating

40. Hillmann, *Corsairs of Saint-Malo*; Lespagnol, "Saint-Malo."

41. Wade, "Privilege at a Premium," 75–105, 148–186; Heywood, "Beyond Braudel's 'Northern Invasion'?"

42. More on the Chamber's underwriting of Newfoundland and Greenland voyages can be found in Wade, "Privilege at a Premium," 148–86.

43. ATR.

44. *Ibid.* For how these clauses could trigger extraordinary disputes, see Wade, "Royal Companies."

45. ATR.

46. Addobbati, "L'assurance à Livourne," 17.

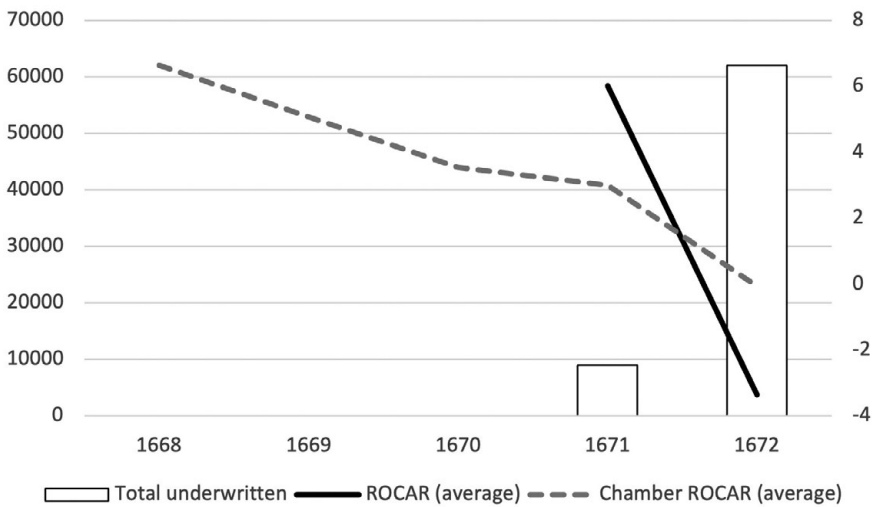


Figure 3. Elisabeth Lefebvre’s underwriting in the years 1671–1672, with the average return on capital at risk (ROCAR; in percent) alongside the Chamber’s average recorded return on capital at risk (in percent). Source: ATR, based on data from AN, Z/1d/75-78.

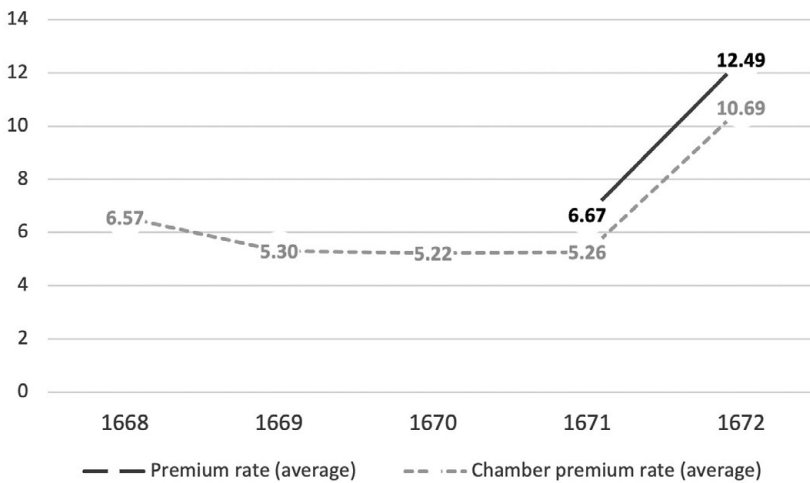


Figure 4. The average premium rate of the policies signed by Elisabeth Lefebvre in the years 1671 to 1672, alongside the average of all the Chamber’s policies. Source: ATR, based on data from AN, Z/1d/75-78.

a conscious decision to create a riskier portfolio (see Figure 4). This did not pay off, and her losses vastly outweighed her GPI: her ROCAR rate fell below –3 percent for the year, leaving her at least 1700 livres in the red (see Table 4).

Thus, while Héliasant developed a deep portfolio that ran over several years—thereby helping to cushion any losses she might have sustained in 1672—Lefebvre put together a

Table 4. The underwriting of Elisabeth Lefebvre across the period 1668 to 1672

Year	No. ^a	Total underwritten ^b	Min.	Max.	Mean	Median	GPI (range) ^c	Losses	ROCAR (range) ^d	Mean premium rate
1668	—	—	—	—	—	—	—	—	—	—
1669	—	—	—	—	—	—	—	—	—	—
1670	—	—	—	—	—	—	—	—	—	—
1671	3	9000	2000	4000	3000	3000	510	—	6.01	6.67
1672	135	62,050	100	3600	460	300	≥6898 ≤7208	8900	≤−3.09 ≥−3.36	12.49
Overall	138	71,050	100	4000	515	300	≥7408 ≤7718	8900	≤−1.87 ≥−2.34	—

Source: ATR, based on data from AN, Z/1d/75-8.

^a Number of policies signed.

^b In livres (as with all the subsequent columns, excluding ROCAR and mean premium rate).

^c Gross premium income.

^d Return on capital at risk.

speculative portfolio that ultimately served her poorly. Alongside numerous colleagues, she learned the hard way that marine insurance was a dangerous market for speculation.⁴⁷

While Jean-Anthoine Vanopstal was listed as one of the Chamber's leading members in 1672 (see Table 1), he was underwriting in partnership with his mother-in-law, Anne Jousse (known in the Chamber's policy registers as "Madame Coulart," widow of Jacques Coulart).⁴⁸ Jousse and Vanopstal entered the market in 1670 with a remarkably diverse portfolio. Nevertheless, Iberian and Caribbean voyages emerged as key foci in 1670 and 1671, reflecting broader trends in the commerce of Atlantic France.⁴⁹

Moving into 1672, Jousse and Vanopstal changed tack. The story by now is familiar: they grew their portfolio, focusing especially on Newfoundland, Greenland, and Venice as Héli-sant and other leading underwriters had done. The partnership emerged at least 1000 livres in the red for the year (see Figure 5).⁵⁰

While 1672 proved a challenging year, Jousse and Vanopstal's premium income from 1670 and 1671 ensured positive returns across the period 1670 to 1672, with profits running to at least 5700 livres overall (see Table 5). Moreover, they supplemented their income through offering their services as commission agents to merchants based in France, England, Spain, Portugal, and the United Provinces (see Table 6). In total, Jousse and Vanopstal were responsible for 239 policies (5.7 percent) of all the Chamber's policies up to 1672, either securing coverage on behalf of others (principals) as commission agents or for their own account.⁵¹ Evidently, Jousse and her son-in-law had diverse commercial connections and maintained strong correspondence across numerous countries in order to sustain this commission

47. The most extreme example is that of the partnership of Jean-Baptiste Forne and Isaac Pierre Jouan: having served as commission agents since 1668, the men decided to enter the market in 1672 and walked away with a ROCAR rate of −26 percent; ATR. For more on the portfolios of men in the Chamber, see Wade, "Privilege at a Premium," 148–186.

48. ATR.

49. Ibid.

50. Ibid.

51. Ibid.

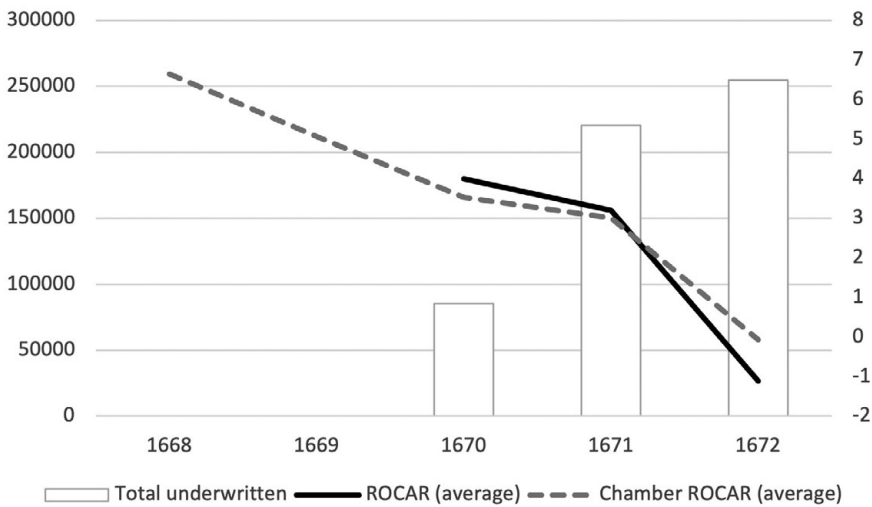


Figure 5. Anne Jousse and Jean-Anthoine Vanopstal’s underwriting in the years 1670–1672, with the average return on capital at risk (ROCAR; in percent) alongside the Chamber’s average recorded return on capital at risk (in percent).

Source: ATR, based on data from AN, Z/1d/75-78.

Table 5. The underwriting of Anne Jousse and Jean-Anthoine Vanopstal across the period 1668 to 1672

Year	No. ^a	Total underwritten ^b	Min.	Max.	Mean	Median	GPI (range) ^c	Losses	ROCAR (range) ^d	Mean premium rate
1668	—	—	—	—	—	—	—	—	—	—
1669	—	—	—	—	—	—	—	—	—	—
1670	169	85,450	300	1000	506	500	4725	1500	3.99	5.44
1671	317	220,500	100	4000	696	500	≥11,624 ≤11,634	4950	3.20	5.46
1672	490	254,590	100	2000	520	500	≥23,075 ≤26,298	27,259	≤-0.42 ≥-1.11	10.38
Overall	976	560,540	100	4000	574	500	≥39,423 ≤42,657	33,709	≥1.10 ≤1.73	—

Source: ATR, based on data from AN, Z/1d/75-8.

^a Number of policies signed.

^b In livres (as with all the subsequent columns, excluding ROCAR and mean premium rate).

^c Gross premium income.

^d Return on capital at risk.

portfolio. Meanwhile, Mme. Vankessel—the only woman named in the Chamber’s table of members, for reasons that are unclear—worked with M. Couvorden to secure eighty-six policies for principals in Abbeville, Amiens, Bordeaux, Calais, Lille, and Saint-Valery-sur-Somme.⁵² Similarly, Mlle. Rondeau signed forty policies as a commission agent for principals

52. Ibid.

Table 6. The named locations of principals for whom Anne Jousse and Jean-Anthoine Vanopstal signed policies in the Chamber

Abbeville	Marennes
Amsterdam	Middelburg
Bayonne	Montauban
Bordeaux	Nantes
Cádiz	Orléans
Ciboure	Plymouth
La Rochelle	Rennes
Lisbon	Rouen

Source: ATR, based on data from AN, Z/1d/75-78.

in Abbeville, Alicante, Bayonne, Bordeaux, Calais, Montpellier, and Nantes.⁵³ These policies therefore hinged on multigendered networks, with Jousse, Vankessel, and Rondeau serving as nodes linking the supply of insurance coverage in Paris with demand in France and beyond.

The Chamber thus facilitated a range of activities for female actors, offering interesting parallels with the stock market in the British Financial Revolution. In many ways reminiscent of Héliissant and Jousse, Johanna Cock worked shoulder to shoulder with men while trading extensively in Bank of England and East India Company shares before and during the 1720 South Sea Bubble.⁵⁴ Yet Cock was an outlier, with most other women engaging only modestly and/or sporadically with the market (rather like Chupin or Rondeau) or engaging primarily to speculate (rather like Lefebvre).⁵⁵ Thus, Paris and London alike offered women the opportunity to participate in the market based on their resources and risk appetites.

In turn, the underwriting of women in the Chamber also proved useful to state interests in supporting maritime commerce, the Atlantic slave trade, and the activities of France's chartered companies. Bellinzani, the Chamber's president and Colbert's right-hand man in commercial affairs, was ideally placed to lean on members to provide coverage and capital for corporate and private voyages enjoying Colbert's patronage. In late 1671, in his capacity as Northern Company director, Bellinzani secured 100,000 livres of coverage on two of the company's vessels. One of these vessels was underwritten by Jousse, Vanopstal, and Lefebvre.⁵⁶ More curious are a series of policies secured by the Levant Company the same year. One voyage from Istanbul to Marseille was underwritten by Jousse and Vanopstal; the other voyages, however, had no relation to the Levant whatsoever: three revolved around Newfoundland fishing, while another centered on the Caribbean; all, again, were underwritten by Jousse and Vanopstal.⁵⁷

This underwriting speaks to the porosity and flexibility of corporate privileges under Colbert: theoretically, voyages to the Caribbean came under the sole remit of the West India Company. Established by Colbert in 1664, this company ostensibly had a monopoly over all

53. Ibid.

54. Carlos and Neal, "Women Investors," 205–208.

55. Ibid., 208–224. For speculators in Royal African Company stock during the South Sea Bubble, see Carlos, Maguire, and Neal, "Financial Acumen," 219–243; for speculators in this and other bubbles, see Froide, *Silent Partners*, 151–177.

56. AN, Z/1d/76, fo. 85v^o.

57. AN, Z/1d/75, fos. 295v^o, 260v^o, 289.

French trade with western Africa and the Americas, tasked primarily with providing enslaved people to the Caribbean colonies.⁵⁸ By 1669, however, it had failed to make the impact Colbert had hoped: the governor of Martinique wrote to the minister to complain the company was failing to meet the demand for enslaved people in the colonies. In response to this, Colbert authorized a series of private slave voyages from 1669 to 1672.⁵⁹ The Levant Company's voyage to the Caribbean may well have been authorized within the context of this gradual breakdown in the West India Company's operations. Far from being dogmatically wedded to corporate privileges, Colbert was willing to open markets under monopoly up to new groups when chartered companies were unable to serve state interests.⁶⁰

Evidence of this can be seen in how Colbert was able to lean on the Chamber to support private slave voyages. Bellinzani, Claude Gueston, Jacques Rey (all underwriters in the Chamber), and other unnamed parties invested directly in the *Saint Esprit's* successful triangular voyage from Le Havre to Guinea, the Caribbean, and then back to Le Havre. On August 29, 1670, Jousse and Vanopstal subscribed 1000 livres to the policy on this voyage. The policy, totaling 50,500 livres, covered (among other things) enslaved people (*nègres*) as "merchandise."⁶¹

Despite the erosion of its monopoly privileges, the West India Company continued to operate, and in 1672, women in the Chamber bore some of its risks in the Caribbean. Following the outbreak of war on April 7, the company's ships were left exposed on their return journeys to France. The company's directors thus came to the Chamber on April 25, securing 267,600 livres of coverage on eight of its vessels and the sugar with which these were laden. Almost a tenth of this coverage was provided by Jousse, Vanopstal, Héliissant, and Lefebvre, each gambling that the vessels they underwrote would return safely with the support of a newly instituted naval convoy system (see Table 7).⁶² Mercifully for the underwriters, every vessel reached France without incident.⁶³

Conflict Resolution and the Limits of Female Agency

The West India Company's need for such extensive coverage reflects the reality that voyages in the seventeenth-century world were often not smooth sailing, especially in times of war. This is precisely why marine insurance existed: underwriters agreed to bear the losses when things went wrong. Getting underwriters to follow through on their commitments, however, could be challenging: in *Le parfait négociant*, Savary cautioned his readers to exercise care when choosing an underwriter, as rogue insurers could simply refuse to make payment and drag out litigation to the detriment of the policyholder.⁶⁴ Similarly, policyholders could conspire to

58. On this, see Banks, "Financiers."

59. *Ibid.*, 90–91.

60. Horn, *Economic Development*, 115.

61. AN, Z/1d/75, fo. 189v^o.

62. On the institution of this convoy system, see Henrat, *Répertoire général*, 69.

63. AN, Z/1d/77, fos. 124v^o–128r^o; ATR.

64. Savary, *Le parfait négociant*, 112–113. On the issue of moral hazard in marine insurance markets, see Wade, "Privilege at a Premium," 263–301; Trivellato, *Promise and Peril of Credit*.

Table 7. The policies secured by the West India Company on April 25, 1672

Policy	Underwriter (and amount underwritten)
<i>Affriquaine</i> [sic]	Anne Jousse and Jean-Anthoine Vanopstal (1500lt) Elisabeth Lefebvre (1000lt) Elisabeth Héliissant (2000lt)
<i>Soucy</i> <i>Marsouin</i>	Anne Jousse and Jean-Anthoine Vanopstal (500lt) Anne Jousse and Jean-Anthoine Vanopstal (1500lt) Elisabeth Lefebvre (1000lt) Elisabeth Héliissant (2000lt)
<i>Saint Nicolas</i>	Anne Jousse and Jean-Anthoine Vanopstal (1200lt) Elisabeth Lefebvre (1000lt)
<i>Marianne</i>	Anne Jousse and Jean-Anthoine Vanopstal (1000lt) Elisabeth Lefebvre (500lt)
<i>Esperance</i>	Anne Jousse and Jean-Anthoine Vanopstal (1500lt) Elisabeth Lefebvre (1000lt) Elisabeth Héliissant (2000lt)
<i>Dorothée</i> [sic]	Anne Jousse and Jean-Anthoine Vanopstal (1000lt) Elisabeth Lefebvre (600lt) Elisabeth Héliissant (1500lt)
<i>Angelique</i>	Anne Jousse and Jean-Anthoine Vanopstal (1500lt) Elisabeth Lefebvre (1000lt) Elisabeth Héliissant (2000lt)
Total	Anne Jousse and Jean-Anthoine Vanopstal (9700lt) Elisabeth Lefebvre (6100lt) Elisabeth Héliissant (9500lt)

Source: ATR, based on data from AN, Z/1d/75-8.

defraud their insurers: in a diary entry from December 1663, Samuel Pepys reflected on a case at King's Bench in London whereby a shipmaster insured his ship and merchandise for more than they were worth, then left his ship to wreck off the coast of France in the hopes of claiming a handsome payout.⁶⁵ Even between these extremes, conflict was inevitable from time to time, as parties debated events at sea in relation to the provisions of insurance policies and maritime law.⁶⁶

Here, men and women alike had choices. The sociological turn in the study of legal practice has led to a reassessment of courts in Old Regime France, with scholars now treating litigants as consumers of justice who became agents of state formation through the decisions they made in resolving conflicts.⁶⁷ This section considers the women operating in the Chamber in the same way: it explores how, as legal actors, these women adopted different strategies to best serve their interests.

In the first instance, disputants might wish to engage in private talks to try to find a mutually agreeable solution. These informal negotiations do not always leave a trace in the historical record, but in some instances, parties asked the Chamber's registrar to record agreements for the benefit of all involved.

65. *Diary of Samuel Pepys*.

66. Here, see Wade, "Privilege at a Premium," 222–328.

67. For an excellent review of this literature, see Breen, "Law."

In September and October 1671, on behalf of a group of unknown stakeholders, Jousse and Vanopstal sought backers in the Chamber for a series of sea loans. Unlike a typical loan, the principal and interest on a sea loan were paid back only in the event of the safe completion of a given voyage.⁶⁸ The voyage in question was that of the *Saint François*, which was set to sail from La Rochelle to “the coast of Guinea” to “trade” there, before traveling to the French Caribbean islands and thence back to La Rochelle.⁶⁹ This was, in short, a textbook triangular slaving voyage—presumably, one of the private ventures authorized by Colbert.

Marie de Longueuil, marquise de Soyécourt, was one of eight who agreed to invest in the voyage. When the *Saint François* reached the Caribbean, it was stopped “for the King’s service” and then subsequently forced by the French governor to wait for more than two months for an escort to arrive. (Whether this royal service impinged on the trading activities the vessel intended to undertake in the Caribbean is unclear.) Jousse and Vanopstal liaised with Soyécourt and the other creditors in July 1673 to request a discount on the interest the debtors owed for the loans, to which the creditors consented. Both groups agreed to record this agreement before the Chamber’s registrar on July 11: Soyécourt was the first to sign her name, even before the Chamber’s senior male members, perhaps reflecting her social rank. Through this agreement, the parties were able to part on good terms.⁷⁰

Otherwise, disputants could come before arbiters in the Chamber’s own arbitration chamber to bring conflicts to a speedy and amicable close. In this space, the agency of women varied based on their role in a given conflict. Nevertheless, looking at the surviving register where the details of arbitration conflicts were recorded, it becomes clear women could, and did, present themselves, their arguments, and their evidence in this chamber.

On June 25, 1672, Catherine Carré, the widow of a Rouennais merchant named Robert Buffier, came to the Chamber seeking 9000 livres of coverage from the Chamber’s underwriters.⁷¹ On April 30, Dirick Gautier had purchased merchandise for her in Gdąnsk and sent it to Jacques Martin in Hamburg via Lübeck. The merchandise arrived safely in Hamburg and was received by Martin, who loaded it on the *Concorde*, whose shipmaster was Gert Jensen Boorman, alongside other merchandise he had bought on Carré’s behalf. On May 20, he wrote to Carré to inform her of the merchandise he was sending on Boorman’s vessel, which was bound for Rouen. This gave Carré the opportunity to secure insurance coverage in Paris. However, a mistake was apparently introduced either before or during the process of drawing up the policy: it specified coverage for the vessel of Jean Georges Boorman, not Gert Jensen Boorman.⁷²

As the *Concorde* tried to navigate the Seine to reach Rouen, the vessel ran aground, resulting in the partial loss of its cargo. Moreover, other unspecified damages were incurred, for which all stakeholders were required to contribute through a legal instrument known as

68. The Chamber’s sea loan registers do not seem to have survived, thus depriving the historian of the ability to undertake a systematic analysis of female lending practices in the Chamber. For more on sea loans, see Edler de Roover, “Early Examples”; Harris, *Going the Distance*, 110–118; Wade, “Privilege at a Premium,” 75–105, 187–221.

69. AN, Z/1d/74, fos. 64v^o–65r^o.

70. Ibid.

71. AN, Z/1d/77, fo. 182v^o.

72. AN, Z/1d/74, fos. 55–56.

general average.⁷³ In addition to her own losses, Carré's general average contribution amounted to 158 livres 17 sols 3 deniers. Nevertheless, when she sought compensation from her Parisian underwriters, they refused to pay out based on a technicality. (Plus ça change, plus c'est la même chose.) The policy did not apply, they argued, because the shipmaster's name on the policy was incorrect.⁷⁴

Carré and the underwriters agreed to meet before arbiters, who assembled on April 18, 1673, to hear their arguments. Carré, speaking alone on her own behalf, came prepared: she submitted fourteen documents to the arbiters justifying her interest in the *Concorde*, including a series of receipts, bills of lading, letters, notarized declarations, and even a statement from a group of senior Rouennais merchants testifying to the *Concorde's* grounding. The arbitration register does not outline the underwriters' submission in detail; however, it seems they argued that if Jean Georges Boorman was a real shipmaster, they could not be held liable. They most likely justified this by suggesting that, if they were held liable, this could open the underwriters up to fraudulent claims in the future.

Sorting through the paperwork she had provided, the arbiters concluded the underwriters owed Carré 40 percent of what they had insured (amounting to 3600 livres). Acknowledging that the shipmaster was not correctly named in the policy, however, Carré was required within three months to produce a suitable certificate attesting that there was no shipmaster named Jean Georges Boorman in Hamburg. In the meantime, if she wanted to be paid, she was obliged to find herself a guarantor—that is, someone who was willing to be held liable for Carré's payout if she could not produce the required certificate and became insolvent in the meantime.⁷⁵ Unfazed, Carré returned to the Chamber three days later with Simon Levesque, a Parisian merchant who agreed to act as her guarantor.⁷⁶ On July 17, Levesque was released from his obligations as guarantor, with the underwriters acknowledging receipt of a certificate confirming that “there is no master in Hamburg named Jean Georges Boorman.”⁷⁷ Thus, while the dispute lacked the drama of Eleanor Curzon's successful lawsuit against the South Sea Company in the aftermath of the 1720 Bubble, Carré's defense in the arbitration chamber was still impressive: it attested to her ability to argue confidently for her interests, bringing the paperwork needed to persuade the arbiters she was acting in good faith and was worthy of indemnification.⁷⁸

Carré was not alone. As a leading commission agent in the Chamber, Jousse appeared in the arbitration chamber alongside her son-in-law to present arguments on behalf of their principals—although, on some occasions, Vanopstal appeared before the arbiters alone.⁷⁹ On January 24, 1669, both signed a policy on behalf of Charles Alleanne of Rouen and other

73. For a full exploration of general average, see the contributions in Fusaro, Addobbati, and Piccinno, *General Average*.

74. AN, Z/1d/74, fos. 55–56.

75. *Ibid.*

76. *Ibid.*, fos. 56v^o–57r^o.

77. *Ibid.*, fo. 65r^o.

78. On this lawsuit, see Froide, *Silent Partners*, 195–198.

79. The arbitration register often refers only to the “parties” being present, but for a case where Jousse's presence is explicitly acknowledged, see AN, Z/1d/74, fo. 91v^o. For an example of an arbitration sentence given before Vanopstal alone, see AN, Z/1d/74, fo. 81.

unnamed parties for the *Esperance's* voyage from Bilbao to Le Havre or Rouen.⁸⁰ The *Esperance* encountered strong winds between Le Havre and Calais, obliging the crew to cut a cable. The vessel reached Calais, but not without the loss of some merchandise. General average was assessed in Le Havre on March 15 at 3 percent for both the ship and the merchandise.⁸¹ In arbitration, the underwriters argued that, following the provisions of the *Guidon de la mer* (a sixteenth-century Rouennais compilation of maritime law and custom), they were not liable for damages of less than 5 percent when these arose from storms.⁸²

Jousse and Vanopstal pushed back against this argument. Working with other disputants who had a stake in the same vessel, they argued that the practice outlined by the underwriters was “contrary not only to [the practices of] Holland, Hamburg and other foreign states, but also to [those of] Rouen and the other principal ports of the kingdom,” such as Saint-Malo and Bordeaux, where payment was permitted for damages arising from storms below 5 percent.⁸³ To support this claim, Jousse and Vanopstal submitted a policy signed in Rouen for the same voyage: Rouennais underwriters, it transpires, had made payment on this policy without complaint. In the end, the in-laws prevailed, with the arbiters ordering the insurers to make payment on the claim within three days in deference to the Rouennais’ decision to pay out.⁸⁴

They proved successful on other occasions too. On June 2, 1670, twenty separate underwriting entities insured the *Esperance's* voyage from Le Havre to Cádiz. Before arbiters in November, Jousse and Vanopstal—acting as commission agents for a company in Orléans—presented abundant evidence to substantiate the vessel’s capture by Salé corsairs. This included a certificate issued by François Julien-Parasol, consul to the French nation in Salé, acknowledging the capture. They also submitted bills of lading and other documents to justify the company’s interest in the adventure. In the face of this evidence, the underwriters made no argument; they had “no means” of disputing their liability, and the judgment requiring them to make payment duly followed.⁸⁵ In short, Jousse and Vanopstal were seasoned players in the market and were able to secure the necessary documentation from their principals to support their claims.

Jousse and Vanopstal’s underwriting activities occasionally overlapped with their activities as commission agents—that is to say, they chose to underwrite some of the policies they brought to the Chamber. In two instances, when conflicts arose between the principals and the other underwriters in the Chamber, Jousse and Vanopstal found themselves in the uncomfortable position of entering arbitration disputes as claimants and defendants simultaneously.⁸⁶ Nevertheless, the principals clearly trusted their commission agents to represent their interests, even in these unusual circumstances.

80. AN, Z/1d/75, fo. 58v^o.

81. AN, Z/1d/74, fos. 3v^o–4v^o; AN, Z/1d/73, fos. 4v^o–5r^o.

82. AN, Z/1d/73, fos. 4v^o–5r^o. The article in question—article 9 of *Du devoir du Greffier des Polices*—holds that a registrar handling insurance policies cannot “draw up the repartition of any averages if it does not exceed one per cent in fees and provisions, and if it does not exceed five per cent if the average arises from [a] storm”; Cleirac, *Us et coutumes*, 289.

83. AN, Z/1d/73, fos. 4v^o–5r^o.

84. *Ibid.*

85. AN, Z/1d/74, fo. 13r^o.

86. *Ibid.*, fos. 79bisv^o–80r^o, 85bis–86r^o.

Jousse's capacity to contribute to conflict resolution in the Chamber had its limits. On occasions, Vanopstal served as an arbiter, helping to bring disputes in the Chamber to a mutually acceptable close; Jousse, by contrast, never served in this function, nor did any other woman.⁸⁷ While the Chamber's by-laws did not explicitly exclude women from arbitrating disputes, the institution seemed to introduce its own informal barrier here to female participation.⁸⁸ This offers some interesting parallels with the formal and informal constraints on female agency within the guild system.

It is hard to say how far the women who served as underwriters were able to contribute to arguments presented before the arbiters. The Chamber's arbitration register typically refers to the underwriters only as claimants or as defendants throughout the record of each case, seldom giving an insight into who was speaking. In the rare instances in which underwriters were explicitly identified as speaking on behalf of others, it was senior male underwriters who had taken up this role, in keeping with the Chamber's hierarchical structure.⁸⁹ Indeed, when Carré presented her case for the damages she had sustained when the *Concorde* grounded in the Seine, Héliissant—who had underwritten this voyage—was not even in the arbitration chamber: Henri Desanteul, André Petit, Alexandre Vinx, and Denis Rousseau spoke on behalf of her and the other underwriters with an interest in the policy.⁹⁰ Thus, while female underwriters may have been able to help in formulating arguments in advance of arbitration, they were ultimately reliant on the senior male underwriters to present these arguments effectively once they entered the arbitration chamber.

Arbitration was not the only possible venue for addressing conflicts, however, which gave female agents in the Chamber further scope to manage conflicts themselves. The Parisian admiralty court handled insurance conflicts, especially in 1673, reflecting the glut of losses that followed the outbreak of war in 1672. Among the cases brought before the court in 1673 was that of Catherine de Lasson, a widow from Saint-Jean-de-Luz. While Lasson had a Parisian commission agent, Paul Aceré des Forges, she chose to take matters into her own hands when underwriters refused to pay out on her policy: at the cost of 30 livres, she sent a horseman from Saint-Jean-de-Luz to Paris to submit her petition to the admiralty court. On July 31, the court ruled in her favor, requiring the underwriters to pay out on the policy and to reimburse her expenses—including the cost of the horseman.⁹¹ Thus, Lasson had eschewed the Chamber's arbitration system in favor of the admiralty court, which, presumably, she felt more confident would meet her needs as a litigant. By contrast, I have found no evidence that Jousse and Vanopstal ever opted to take conflicts to court on behalf of principals (although they were themselves defendants in some court cases in their capacity as underwriters).⁹² Instead, as we have seen, they tried to resolve disputes privately or, otherwise, through arbitration. Women and men in the Chamber created their own strategy for resolving

87. For examples of an arbitration case where Vanopstal served as arbiter, see *ibid.*, fos. 18r^o, 22v^o.

88. AN, Z/1d/73, fos. 10r^o–13v^o.

89. AN, Z/1d/74, fos. 11v^o–12r^o, 65v^o–68, 86v^o–90r^o.

90. *Ibid.*, fos. 55–56.

91. AN, Z/1d/106, n. p.

92. *Ibid.*

conflicts, based on their needs and interests and, in the case of Jousse and Vanopstal, those of their principals.⁹³

Where some women were able to navigate the Parisian institutional landscape to their advantage, others found themselves in more precarious positions. On April 18, 1673, the admiralty court issued two default judgments against Héliissant and Henri Desanteul totaling 10,000 livres.⁹⁴ In the second order, pertaining to a vessel named the *Orrore*, the court noted it was simply enforcing a judgment made by the Chamber's arbiters on January 20. François Moreau de Launay, acting as commission agent for prominent Malouin merchants, had been forced to pursue Héliissant and Desanteul in court for payment.

We should not assume Héliissant and Desanteul were playing the role of Savary's unscrupulous underwriters. We have seen that Héliissant is unlikely to have suffered large losses from her portfolio in 1672: indeed, she made quite handsome profits across the period 1668 to 1672 (see Table 3). Nevertheless, the sudden influx of claims may have caught her off guard, especially if she had invested her premium income on receipt: delay tactics may have been necessary for her and Desanteul to draw on their credit resources to make payment. Such delays came at a price, however: the judgment for the *Orrore* specified that interest would be owed on the principal, to be calculated "from the day of the sentence in the Chamber" until the day the principal was ultimately paid.⁹⁵ If Héliissant and Desanteul had paid immediately, they would have been liable for almost three months of interest.

Yet they did not pay immediately. Instead, they submitted petitions to the admiralty court to appeal. The nature of both petitions was the same: they accused Moreau of failing in both cases to provide the "supporting documents" to justify the "claimed loss."⁹⁶ Although there is no record of what followed this, it is clear Héliissant and Desanteul were willing to pursue every legal avenue in the hopes of being discharged from the policies they had signed. Thus, despite operating from a position of weakness, they still had options when faced with conflict and, like other women and men around them, leveraged these options in pursuit of their interests.

Conclusions: Gender and Marine Insurance

The year 1673 marked a high point in female agency in the Parisian insurance market under Louis XIV. The Chamber's underwriting dramatically contracted thereafter, as underwriters and policyholders alike lost confidence in the market and the Chamber's capacity to ensure members kept their commitments.⁹⁷ The institution plodded on somehow until 1686, when Colbert's son, the marquis de Seignelay, dismantled it and established in its place what is possibly the first chartered company in the history of marine insurance, the Royal Insurance

93. For more on how actors in the Chamber created strategies for managing conflicts in 1673, see Wade, "Privilege at a Premium," 263–301.

94. Pierre Desanteul was also ordered to contribute to 4000 livres of this; AN, Z/1d/106, n.p.

95. *Ibid.*

96. *Ibid.*

97. For a full analysis, see Wade, "Privilege at a Premium," 148–186, 263–301.

Company (Compagnie générale des assurances et grosses aventures).⁹⁸ The Company was endowed with a monopoly on marine insurance in Paris, preventing those outside the institution from underwriting without its express permission. Its shareholders—fixed at a maximum of thirty—were all men. When Charles Lebrun died in 1698, his widow, Marguerite Maurice, and his children inherited his share(s) in the Company.⁹⁹ Nevertheless, as Lebrun's heir, Maurice was required by the Company's articles of association to sell her late husband's share(s) within a year and enjoyed no right to any dividends in the meantime. While shares could be sold on the open market—theoretically giving women the opportunity to join the institution—current shareholders had right of first refusal, ensuring the Company remained socially homogeneous.¹⁰⁰

Women also seem to have been excluded elsewhere in the Company's activity. While the Company's policy registers have been lost, preventing a direct comparison with the Chamber, two registers have survived for its insurance claims from 1686 to 1692, which give a valuable insight into the role of commission agents in facilitating the Company's business. These registers offer no evidence a woman ever served as a commission agent. Meanwhile, from a total of 590 claims, only 28 featured female policyholders.¹⁰¹ The Company thus reversed the Chamber's success in bringing female capital into the Parisian insurance market and supporting the mercantile enterprises of women across France.

While the Chamber was short-lived, the institution nevertheless offers unique insights into female engagement at a crucial juncture in the development of the France's Atlantic Empire. While the literature on female agency in commercial networks has flourished, far less has been said about female agency in formal commercial institutions. In the words of Sophie Jones and Siobhan Talbott, “the spaces of ‘doing’ commerce—including exchanges, counting houses, and coffee houses—were intrinsically masculine,” meaning sources often give little indication of how far (if at all) women participated in these spaces.¹⁰² Underwriting spaces are more difficult for the historian to access than most: in keeping with Fernand Braudel's “opaque” sphere of capitalism—where a small minority operated, beyond the comprehension of the rest of society—the complex (and, in the wrong circumstances, socially subversive) practices of marine insurance were among the most opaque for contemporaries, while leaving the faintest of traces on the historical record.¹⁰³ The Chamber brings a remarkable degree of transparency to this opaque business, demonstrating that women could and did participate in it.

Women may not have received the recognition of their male counterparts in the Chamber, but they were integral to the market as buyers, sellers, and intermediaries, leveraging their commercial knowledge and networks in service to their commercial activities. Chupin made

98. For a full assessment of the Company, see *ibid.*, 75–147, 187–262, 302–328; Wade, “Royal Companies.”

99. AN, Z/1d/111, n.p.

100. Bornier, *Conférences*, 513–525.

101. AN, Z/1d/82, Z/1d/88.

102. Jones and Talbott, “Sole Traders?,” 7. For a valuable exception to the rule, see Froide, “Navigating the Spaces.”

103. On Braudel's understanding of capitalism, besides Braudel, *Civilisation & Capitalism*, see Wallerstein, “Braudel on Capitalism.” On marine insurance as a socially destabilizing instrument, see Trivellato, *Promise and Peril of Credit*; Farber, *Underwriters of the United States*; Wade, “Privilege at a Premium,” 106–147, 263–301.

sound underwriting decisions on behalf of her husband; Héliissant maintained an extensive portfolio spanning the Western Hemisphere; Jousse did the same, while also negotiating insurance policies and sea loans for an international clientele.

Furthermore, women in the Chamber were as capable as their male counterparts of crafting nuanced strategies for resolving conflicts. While Jousse and Carré proved willing to go before arbiters to resolve disputes (or, in Jousse's case, even meet with underwriters informally to negotiate agreements), Lasson and Héliissant both drew on the support of the Parisian admiralty court, albeit from differing positions of strength. Thus, while women did not necessarily exercise the same agency as men in the Chamber's arbitration chamber, the court system ensured women had multiple options for resolving conflicts.

In engaging so extensively in the market, the female underwriters of Paris demonstrate that the homosociality of Lloyd's, while undoubtedly deep-rooted, was not inevitable. In a Bloomberg investigation from 2019, Gavin Finch suggests the culture of sexism in Lloyd's has deep historical roots that can be traced back to the institution's origins: indeed, Finch characterizes the unequal treatment of women in Lloyd's as an "anachronism," the manifestation of Lloyd's "archaic" nature.¹⁰⁴ Similarly, Simon English has recently condemned the "culture" of Lloyd's as "out of date."¹⁰⁵ Yet the Royal Insurance Chamber reveals the capacity for female agency in marine insurance decades before Lloyd's coffeehouse became a space for underwriting.

Furthermore, just as Lloyd's was rising to supremacy in the eighteenth century, women were making significant investments in London's chartered insurance companies.¹⁰⁶ As we have seen, this was part of a broader process of female investment in public institutions: by the middle of the eighteenth century, "between one fifth and one third of investors in joint-stock companies, the Bank of England, and the national debt were women."¹⁰⁷ Indeed, just as women managed to engage in the Parisian capital market through institutions such as the Chamber and the city's notarial offices, the most successful female investors and brokers in England proved adept at navigating spaces of finance, including coffeehouses, the Exchequer, East India House, and the Bank of England.¹⁰⁸ Far from being a logical by-product of the times, then, the apparent absence of female underwriters at Lloyd's should be understood as an aberration.

In underwriting the French Atlantic Empire, thereby supporting Colbertian initiatives, Parisian women joined these Englishwomen in facilitating European colonial development. Misha Ewen finds that the Virginia Company sought (and secured) female investment in the early seventeenth century, shedding light on how "women facilitated the growth of a burgeoning English empire."¹⁰⁹ Froide goes further, arguing that Englishwomen in the Financial Revolution were engaging in a form of "financial patriotism" that amalgamated self-interest

104. Finch, "Old Daytime-Drinking, Sexual-Harassing Ways."

105. English, "Laddish Culture."

106. Froide, *Silent Partners*, 15–16. For more on female investment in English insurance companies, see Scott, *Constitution and Finance*.

107. *Ibid.*, 209; see also Carlos and Neal, "Women Investors," 208–224.

108. Froide, "Navigating the Spaces."

109. Ewen, "Women Investors," 857.

and the good of the state.¹¹⁰ Indeed, “without the money of thousands of Englishwomen, Britain’s trade, wars, and empire would not have been possible or as successful.”¹¹¹

We can see a similar alignment between self-interest and state interest in the case of the Chamber: women and men alike supported Colbertian ventures, colonial or otherwise, with Bellinzani acting as a node between the underwriters and the monarchy. The Northern, Levant, and West India Companies benefited from the underwriting of Jousse, Héliissant, and Lefebvre; moreover, Jousse underwrote the slaving voyage of the *Saint Esprit*, and Soyécourt invested directly in that of the *Saint François*. We know that female merchants in western African ports such as Cacheu participated in the sale of enslaved people into the Atlantic slave trade; women in Britain and North America also contributed to slaving activities, for example, through investing in the South Sea and Royal African Companies or outright slave ownership.¹¹² The cases here build on (and go beyond) this work by revealing how female credit and underwriting capital in Paris played a role in furthering France’s early slaving expeditions.

Zooming out, the underwriting portfolios of Héliissant, Jousse, and Lefebvre also helped to support French maritime activity at the outset of the Dutch War, just as protection was needed most. In particular, Newfoundland cod fishers and Greenland whalers secured extensive coverage in Paris, sustaining provincial economic activity in wartime while continuing to grow the pool of sailors on which Colbert depended to achieve his naval and commercial ambitions.

The Royal Insurance Chamber therefore emerges as the hitherto missing piece in the jigsaw of Colbertianism. While the Sun King’s gaze was fixed firmly on France’s eastern frontiers, Colbert sought to promote France’s commercial, industrial, and colonial interests in the Atlantic. Through the Chamber, Colbert was able to leverage Parisian capital in service to his multifaceted maritime and colonial policies. In the process, forgotten women like Héliissant and Jousse became underwriters of empire itself.

LEWIS WADE is the Economic History Society Postan Fellow at the Institute of Historical Research, University of London, UK, and an honorary research fellow at the University of Exeter, UK. His thesis, entitled “Privilege at a Premium: Insurance, Maritime Law and Political Economy in Early Modern France, 1664–c. 1710,” was awarded the British Commission for Maritime History’s Boydell & Brewer Prize for the best doctoral thesis in maritime history. Contact information: University of Exeter, Exeter EX4 4PY, UK. E-mail: lw531@exeter.ac.uk.

Acknowledgment

The research for this article was conducted thanks to funding from the European Research Council: ERC grant agreement no. 724544: AveTransRisk—Average-Transaction Costs and Risk Management during the First

110. Froide, *Silent Partners*, 202–5.

111. *Ibid.*, 4. In the realm of insurance, Hannah Farber has identified the role played by underwriters as patriotic investors in the federal debt of the early United States. Such patriotism was complicated, however, by the way in which underwriters made their fortunes in wartime, just as the American economy was in its most precarious state. Farber, *Underwriters of the United States*.

112. Green, *Fistful of Shells*, 341–3; Froide, *Silent Partners*; Walker, “Pursuing Her Profits.”

Globalization (Sixteenth–Eighteenth Centuries), as well as funding from the Economic History Society through a Postan Fellowship held at the Institute of Historical Research. I am grateful to Maria Fusaro and Jake Dyble for their comments on earlier drafts of this article, and to Sabine Go for her valuable recommendations in dealing with the peculiarities of my data. I am especially grateful to Ian Wellaway for his efforts in designing the AveTransRisk database based on my needs (and those of my colleagues on the AveTransRisk team) and working with me to facilitate data analysis. Finally, I am indebted to Julie Hardwick, Amy Froide, and a third anonymous peer reviewer, whose extraordinarily generous and thoughtful comments have improved this piece immeasurably. All errors remain my own.

Bibliography of Works Cited

Books

- Bornier, Philippe. *Conférences des ordonnances de Louis XIV. Roy de France et de Navarre: avec les anciennes ordonnances du Royaume, le droit écrit & les arrêts*. Vol. 2, Paris, 1719.
- Braudel, Fernand. *Civilisation & Capitalism 15th–18th Century*. 3 vols. London: Collins, 1981.
- Ceccarelli, Giovanni. *Risky Markets: Marine Insurance in Renaissance Florence*. Leiden: Brill, 2020.
- Cleirac, Étienne. *Les us et coutumes de la mer. Divisées en trois parties*. Rouen: Jean Berthelin, 1671.
- Cole, Charles Woolsey. *Colbert and a Century of French Mercantilism*. Vol. 1. New York: Columbia University Press, 1939.
- Crowston, Clare Haru. *Fabricating Women: The Seamstresses of Old Regime France, 1675–1791*. Durham, NC: Duke University Press, 2001.
- Farber, Hannah. *Underwriters of the United States: How Insurance Shaped the American Founding*. Williamsburg, VA: Omohundro Institute of Early American History and Culture; Chapel Hill, NC: University of North Carolina Press, 2021.
- Froide, Amy. *Silent Partners: Women as Public Investors During Britain's Financial Revolution, 1690–1750*. Oxford: Oxford University Press, 2015.
- Fusaro, Maria, Andrea Addobbati, and Luisa Piccinno, eds. *General Average and Risk Management in Medieval and Early Modern Maritime Business*. Basingstoke, UK: Palgrave Macmillan, forthcoming in 2022.
- Green, Toby. *A Fistful of Shells: West Africa from the Rise of the Slave Trade to the Age of Revolution*. London: Penguin, 2020.
- Hardwick, Julie. *Family Business: Litigation and the Political Economies of Daily Life in Early Modern France*. Oxford: Oxford University Press, 2009.
- Harris, Ron. *Going the Distance: Eurasian Trade and the Rise of the Business Corporation, 1400–1700*. Princeton, NJ: Princeton University Press, 2020.
- Henrat, Philippe. *Répertoire général des Archives de la Marine, XVIe–XVIIIe siècles*. Paris: SPM, 2018.
- Hillmann, Henning. *The Corsairs of Saint-Malo: Network Organization of a Merchant Elite Under the Ancien Régime*. New York: Columbia University Press, 2021.
- Hoffman, Philip T., Gilles Postel-Vinay, and Jean-Laurent Rosenthal. *Priceless Markets: The Political Economy of Credit in Paris, 1660–1870*. Chicago: University of Chicago Press, 2000.
- Horn, Jeff. *Economic Development in Early Modern France: The Privilege of Liberty, 1650–1820*. Cambridge: Cambridge University Press, 2015.
- Lanza, Janine. *From Wives to Widows in Early Modern Paris: Gender, Economy, and Law*. London: Routledge, 2016.

- Leonard, A. B. *London Marine Insurance 1438–1824: Risk, Trade, and the Early Modern State*. Woodbridge, UK: Boydell & Brewer, 2022.
- Leonard, Adrian, ed. *Marine Insurance: Origins and Institutions, 1300–1850*. Basingstoke, UK: Palgrave Macmillan, 2016.
- Lynn, John A. *The Wars of Louis XIV 1667–1714*. London: Longman, 1999.
- Moring, Beatrice, and Richard Wall. *Widows in European Economy and Society, 1600–1920*. Woodbridge, UK: Boydell & Brewer, 2017.
- Ogilvie, Sheilagh. *The European Guilds: An Economic Analysis*. Princeton, NJ: Princeton University Press, 2019.
- Pizzoni, Giada. *British Catholic Merchants in the Commercial Age, 1670–1714*. Woodbridge, UK: Boydell & Brewer, 2020.
- Pritchard, James. *In Search of Empire: The French in the Americas, 1670–1730*. Cambridge: Cambridge University Press, 2004.
- Quercia, Potito. *La gestione dei rischi marittimi nel Mediterraneo occidentale della seconda metà del XVI secolo attraverso il mercato assicurativo balearico*. Bari: Cacucci, 2013.
- . *Le Assicurazioni marittime maiorchine a metà Cinquecento: come fattore di socializzazione del rischio*. Bari: Cacucci, 2014.
- Roulet, Éric. *La Compagnie des îles de l'Amérique 1635–1651. Une entreprise coloniale au XVIIe siècle*. Rennes: Presses universitaires de Rennes, 2017.
- Savary, Jacques. *Le parfait négociant, ou Instruction générale pour ce qui regarde le commerce des marchandises de France et des pays étrangers*. Vol. 1. Paris: Frères Estienne, 1757.
- Scott, W. R. *The Constitution and Finance of English, Scottish and Irish Joint-Stock Companies to 1720*. Vol. 3. Cambridge: Cambridge University Press, 1912.
- Sonnino, Paul. *Louis XIV and the Origins of the Dutch War*. Cambridge: Cambridge University Press, 1988.
- Trivellato, Francesca. *The Promise and Peril of Credit: What a Forgotten Legend About Jews and Finance Tells Us About the Making of European Commercial Society*. Princeton, NJ: Princeton University Press, 2019.
- Wood, Laurie. *Archipelago of Justice: Law in France's Early Modern Empire*. New Haven, CT: Yale University Press, 2020.
- Wright, Charles, and C. Ernest Fayle. *A History of Lloyd's from the Founding of Lloyd's Coffee House to the Present Day*. London: Macmillan and Company, 1928.

Articles, Chapters in Books, and Theses

- Addobbati, Andrea. “L’assurance à Livourne au XVIIIe siècle, entre mutualisme et marché concurrentiel.” In *Insurance in Industrial Societies: Economic Role, Agents and Market from the Eighteenth Century to today*, edited by Clara Eugenia Nuñez, 13–30. Seville: Universidad de Sevilla, 1998.
- Banks, Kenneth. “Financiers, Factors, and French Proprietary Companies in West Africa, 1673–1713.” In *Constructing Early Modern Empires: Proprietary Ventures in the Atlantic World, 1500–1750*, edited by Louis Roper and Bertrand Van Ruymbeke, 79–116. Leiden: Brill, 2007.
- Barazzutti, Roberto. “Les Néerlandais du Centre-Ouest français au Canada: des relations particulières au XVIIe siècle.” In *Le golfe du Saint-Laurent et le Centre-Ouest français. Histoire d’une relation singulière (XVIIe–XIXe siècle)*, edited by Mickaël Augeron, Jacques Péret, and Thierry Sauzeau, 123–137. Rennes: Presses Universitaires de Rennes, 2010.

- Breen, Michael. "Law, Society, and the State in Early Modern France." *Journal of Modern History* 83, no. 2 (2011): 346–386.
- Carlos, Ann M., Karen Maguire, and Larry Neal. "Financial Acumen, Women Speculators, and the Royal African Company During the South Sea Bubble." *Business & Financial History* 16, no. 2 (2006): 219–243.
- Carlos, Ann M., and Larry Neal. "Women Investors in Early Capital Markets, 1720–1725." *Financial History Review* 11, no. 2 (2004): 197–224.
- Collins, James B. "The Economic Role of Women in Seventeenth-Century France." *French Historical Studies* 16, no. 2 (1989): 436–470.
- Damiano, Sara T. "Agents at Home: Wives, Lawyers, and Financial Competence in Eighteenth-Century New England Port Cities." *Early American Studies: An Interdisciplinary Journal* 13, no. 4 (2015): 808–835.
- Edler de Roover, Florence. "Early Examples of Marine Insurance." *Journal of Economic History* 5, no. 2 (1945): 172–200.
- Ewen, Misha. "Women Investors and the Virginia Company in the Early Seventeenth Century." *Historical Journal* 62, no. 4 (2019): 853–874.
- Froide, Amy. "Navigating the Spaces and Places of England's First Stock Market: Women Investors and Brokers During the Financial Revolution, c. 1690–1730." In *The Cultural Life of Risk and Innovation: Imagining New Markets from the Seventeenth Century to the Present*, edited by Chia Yin Hsu, Thomas M. Luckett, and Erika Vause, 63–79. New York: Routledge, 2021.
- Haggerty, Sheryllynn. "Miss Fan can tun her han! Female Traders in Eighteenth-Century British American Atlantic Port Cities." *Atlantic Studies* 6, no. 1 (2009): 29–42.
- Hardwick, Julie. "Widowhood and Patriarchy in Seventeenth Century France." *Journal of Social History* 26, no. 1 (1992): 133–148.
- Heywood, Colin. "Beyond Braudel's 'Northern Invasion'? Aspects of the North Atlantic and Mediterranean Fish Trade in the Early Seventeenth Century." *International Journal of Maritime History* 26, no. 2 (2014): 193–209.
- Hope, Mallory. "Commercial Networks, Maritime Law, and Translation in a Spanish Insurance Claim on Trial in France, 1783–1791." In *Maritime Risk Management: Essays on the History of Marine Insurance, General Average and Sea Loan*, edited by Phillip Hellwege and Guido Rossi, 209–245. Berlin: Duncker & Humblot, 2021.
- Jones, Sophie H., and Siobhan Talbott. "Sole Traders? The Role of the Extended Family in Eighteenth-Century Atlantic Business Networks." *Enterprise & Society* FirstView (2021): 1–30. doi: [10.1017/eso.2021.15](https://doi.org/10.1017/eso.2021.15)
- Kingston, Christopher. "Marine Insurance in Britain and America, 1720–1844: A Comparative Institutional Analysis." *Journal of Economic History* 67, no. 2 (2007): 379–409.
- . "Governance and Institutional Change in Marine Insurance, 1350–1850." *European Review of Economic History* 18, no. 1 (2013): 1–18.
- Lespagnol, André. "Saint-Malo, les Malouins et Marseille. Une relation particulière." In *La mer en partage. Sociétés littorales et économies maritimes XVIe–XXe siècle*, edited by Xavier Daumalin, Daniel Faget, and Olivier Raveux, 181–193. Aix-en-Provence: Presses Universitaires de Provence, 2016.
- Puttevils, Jeroen, and Marc Deloof. "Marketing and Pricing Risk in Marine Insurance in Sixteenth-Century Antwerp." *Journal of Economic History* 77, no. 3 (2017): 796–837.
- Sharpe, Pamela. "Gender in the Economy: Female Merchants and Family Businesses in the British Isles, 1600–1850." *Social History/Histoire Sociale* 34, no. 68 (2001): 283–306.

- Wade, Lewis. "Privilege at a Premium: Insurance, Maritime Law and Political Economy in Early Modern France, 1664–c. 1710." Unpublished PhD diss., Department of History, University of Exeter, Exeter, UK, 2021.
- . "Royal Companies, Risk Management and Sovereignty in Old Regime France." *English Historical Review*, forthcoming in 2022.
- Walker, Christine. "Pursuing Her Profits: Women in Jamaica, Atlantic Slavery and a Globalising Market, 1700–60." *Gender & History* 26, no. 3 (2014): 478–501.
- Wallerstein, Immanuel. "Braudel on Capitalism, or Everything Upside Down." *Journal of Modern History* 63, no. 2 (1991): 354–361.

Newspapers and Magazines

- English, Simon. "The Laddish Culture at Lloyd's of London Is Out of Date." *Evening Standard*, March 17, 2022. www.standard.co.uk/business/lloyd-s-of-london-culture-drinking-sexism-b988746.html.
- Finch, Gavin. "The Old Daytime-Drinking, Sexual-Harassing Ways Are Thriving at Lloyd's." *Bloomberg*, March 21, 2019. www.bloomberg.com/news/features/2019-03-21/the-old-daytime-drinking-sexual-harassing-ways-are-thriving-at-lloyd-s.
- Williams-Grut, Oscar. "Lloyd's of London Says Fixing Broken Culture Is on Track as It Returns to Profit." *Evening Standard*, March 24, 2022. www.standard.co.uk/business/lloyd-s-of-london-bruce-carnegiebrown-2021-results-profit-sexism-bullying-russia-ukraine-inflation-b990236.html.

Unpublished Materials

- AveTransRisk data set, University of Exeter (ATR), accessed April 1, 2022, <https://humanities-research.exeter.ac.uk/avetransrisk/france>.
- The Diary of Samuel Pepys*, accessed April 26, 2022, www.pepysdiary.com/diary/1663/12/01.
- Lloyd's, "Gender and Ethnicity Pay Gap Reports," accessed April 26, 2022, www.lloyds.com/about-lloyds/diversity-and-inclusion/gender-pay-gap-report.

Archives

Archives nationales (AN), Paris.

Cite this article: Wade, Lewis. "Underwriting Empire: Marine Insurance and Female Agency in the French Atlantic World." *Enterprise & Society* 25, no. 1 (2024): 184–212.