

SPECIAL ARTICLE

Epidemiological aspects of human cryptosporidiosis

INTRODUCTION

The coccidian protozoan parasite *Cryptosporidium* has been described in many host species since its discovery in the early part of the century, but it remained obscure until the recognition by veterinary workers in the 1970s of its importance as a cause of scours in young livestock animals [1–4]. Subsequently, particularly as a result of collaborative studies involving both medical and veterinary workers, cryptosporidiosis was also recognized in man [1, 4–7]. Many of the early reports of the infection in humans were in immunocompromised subjects, either immunodeficient subjects, particularly those suffering from the then newly emerging disease, AIDS, and in the immunosuppressed. Such early cases were often diagnosed histologically, sometimes as a chance finding. Diagnosis by means of detection of oocysts in animal faecal smears had been demonstrated by veterinary workers in the 1970s [1, 3] and subsequently also in humans [5–8]. However, the presence of oocysts in faeces, and the significance of the infection, continued to be in doubt [9, 10]. Some cases, particularly among the immunocompetent, appeared to have an association with animals, particularly cattle, but even when such a source was not apparent the infection was generally referred to as an emerging opportunist zoonosis [11, 12]. At that time, little if anything was known of the epidemiology of the infection in the general population. The recognition of an apparently opportunist zoonosis occurring particularly in young calves and in AIDS patients who were primarily urban adult males seemed, however, to be epidemiologically inconsistent. A prospective study was therefore set up at the Rhyl Public Health Laboratory in early 1983 to look for the parasite in a mixed urban and rural population including representatives of all age groups [13]. Such preliminary prospective surveys, from north Wales and elsewhere, indicated the importance of the parasite as a cause of acute, sporadic gastroenteritis in otherwise healthy subjects, particularly children, in developed countries [14, 15], in under-developed countries [16, 17], and in travellers, most of whom were adults [18, 19].

Increasing awareness of the parasite, and that it could be identified by means of detection of oocysts in faeces using variations of conventional microbiological staining methods [20–24], led the way to widespread investigation and reporting. *Cryptosporidium* is now widely recognized as a cause of acute, self-limiting, infective gastroenteritis in otherwise normal human subjects and of potentially fatal infection in the immunocompromised. However, examination of presumptive positive samples referred to the Rhyl Public Health Laboratory from various parts of the world indicate that some over-reporting undoubtedly occurs as a result of failure to discriminate between oocysts and the various oocyst-like bodies

(fungal spores, etc.) which are not oocysts (see below). Conversely, dependence on microscopical detection of individual oocysts may result in some under-reporting. Few of the early reports included detailed descriptions of epidemiological field studies. The emergence of evidence of outbreaks indicated the need for control measures based on an understanding of the natural history of the infection using methods established for other gastrointestinal infections [25]. There was, therefore, clearly a need for more detailed epidemiological investigation of the infection, particularly in immunocompetent hosts [26]. Such studies were initiated in the UK, including north Wales.

In many laboratories worldwide, in both developed and developing countries, *Cryptosporidium* is now among the most commonly reported enteric pathogens. Varying patterns of incidence, by age, season, and geographical location, and of routes of transmission, have now emerged and have been reviewed [4, 27–34]. Cryptosporidiosis continues to represent a serious threat to AIDS sufferers and others who are immunocompromised. Although there are some differences in the epidemiology of the infection between immunocompetent and immunocompromised subjects, e.g. in age distribution and in the severity and duration of symptoms, in general the epidemiology differs little except where indicated below.

BIOLOGY AND CLASSIFICATION

A knowledge of the biology of the parasite is essential to an understanding of the epidemiology of human cryptosporidiosis. Much of the earlier literature on *Cryptosporidium* describing its biology and classification is confused and contains inaccuracies in addition to areas of uncertainty. *Cryptosporidium* is a coccidian protozoan which, however, differs from other coccidia in several important respects. *Cryptosporidium* is so named because it appears to lack the sporocyst structure found in other coccidia. It is an obligate parasite with a complex life-cycle, which it completes without the need for development in a secondary host; i.e. it is monoxenous [7, 28–31] (Figs 1, 2). Infection is initiated following ingestion of an environmentally resistant oocyst containing four, naked, motile sporozoites. Development is through several characteristic stages: excystment, merogony (asexual), gamogony (sexual), zygote and oocyst formation, and sporulation. The fixed endogenous (tissue) stages have a pseudo-external location and are intracellular but extracytoplasmic. They are found primarily in the brush-border of the apical enterocytes of the small bowel but may develop on any epithelial surface and have been reported in a number of different organs and tissues [32]. The non-flagellate motile forms (zoites) are released into the lumen and are initially actively invasive. Once they have entered a cell they develop as a fixed (endogenous) stage within a parasitophorous vacuole thought to be formed from the host cell outer membrane. Recycling of asexual stages, and the presence of thin-walled oocysts which result in endogenous reinfection (autoinfection), permit very heavy infection to develop [31, 34]. The infection is probably limited by a combination of humoral and cellular immune mechanisms. The oocyst stage does not require a period of external ripening. The various developmental stages have been elegantly illustrated by Current and his co-workers [31, 35, 36].

Cryptosporidium is an ubiquitous parasite described in a large number of host species [28, 31]. Early reports tended to assign species status to isolates from each

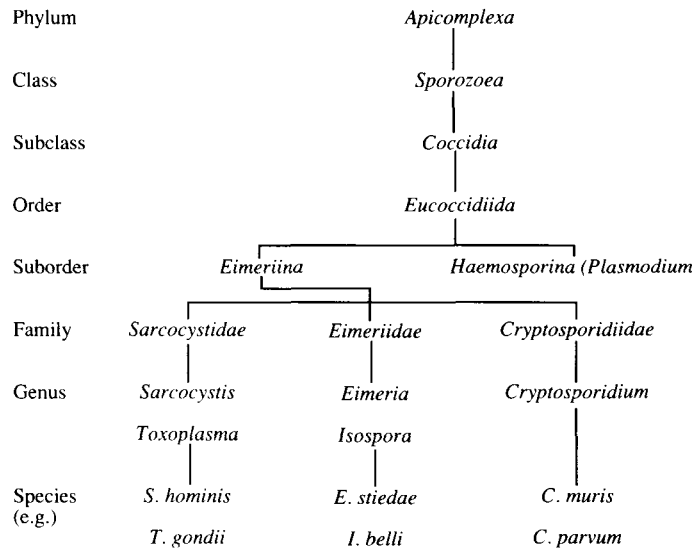


Fig. 1. Taxonomic position of *Cryptosporidium* simplified to show relationships with other medically important species. (Reproduced with permission from Casemore, Sands and Curry [7].)

newly reported host species in accordance with the practice for other coccidia which are generally both host- and tissue-specific. Some of these identifications were based on inadequate information and were incorrect. Subsequently, evidence was adduced to suggest the possibility of a single species genus [4, 37]. However, examination of the original findings of Tyzzer [38–40], disputed by some [4] but largely confirmed by others, reveal that *C. muris* and *C. parvum* are distinct species, both found in mice [7, 31, 34–36, 41–43]. *C. muris* appears to be restricted to the glands of the stomach. It has subsequently also been found to occur in cattle in which it is found in the abomasum and oocysts may be detected in the faeces [35, 44]. Anderson in the USA [44], has reported finding the infection to be present in many herds of cattle, in which infection appears to be asymptomatic, but it has not yet been reported in the UK (K. Angus, personal communication). *C. parvum* was so described because of its smaller size. Tyzzer predicted that it might be capable of infecting more than one host species. The majority of infections in man and most livestock animals are probably with *C. parvum* [7, 31, 34, 35]. There is insufficient data yet to confirm whether isolates can be sub-divided into host adapted strains or antigenic or other sub-types although there is some evidence to support this possibility (see below). Some antigenic variation appears to exist which may reflect the host species from which the isolate was derived [43, 45, 46]. Until more definitive information is available it is probably safer to refer to isolates from humans as *Cryptosporidium* species.

Cryptosporidia are known to occur in wild rodents which may act as a natural reservoir for livestock animals [41–43]. Although *in vivo* laboratory studies require the use of suckling mice, infection and excretion of oocysts appears to occur in adult wild mice. There are at least two avian species which, fortunately in public health terms, appear to be poorly transmissible, if at all, to man and other mammals [31, 47–49]. Cryptosporidia have occasionally been reported in fish and

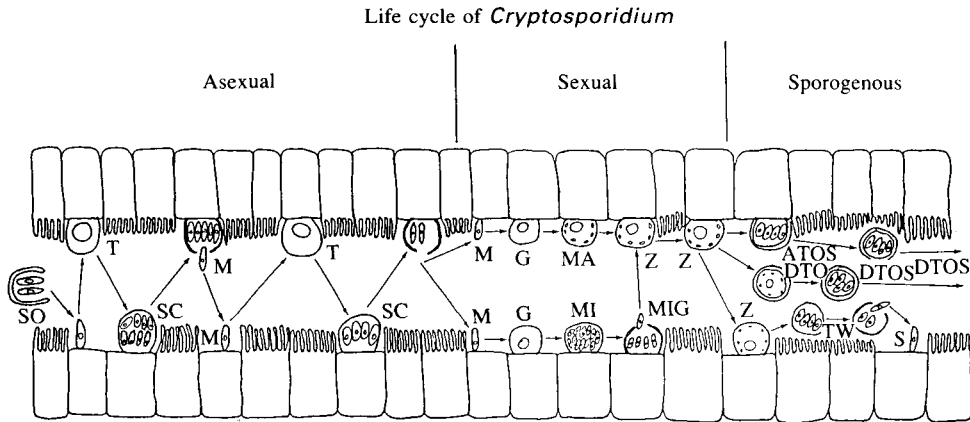


Fig. 2. Diagrammatic representation of the life cycle of *Cryptosporidium* sp. Infection starts with ingestion of an oocyst containing four naked, motile, sporozoites (SO). Sporozoites (S) are released, attach to an epithelial cell and take up a pseudo-external position. They develop into a trophozoite (T) or uninucleate meront which, as it matures, undergoes schizogony (asexual multiple budding) to produce a schizont (SC). There are probably two asexual generations which undergo three and then two nuclear divisions, producing eight or four motile merozoites respectively (M). Merozoites of the first generation invade other cells to form new meronts. The second generation produce gamonts (G) of the sexual cycle. The latter may mature as either microgamonts (MI) or macrogametes (MA). Microgamonts produce 16 motile microgametes (MIG) which, on release, fertilize the macrogamete to produce a zygote (Z). The zygote may follow several sporogenous developmental routes: it may transform into a thick-walled oocyst in-situ (ATOS) which then sporulates before becoming detached from the host cell (DTOS), or be shed and subsequently sporulate (DTO); the zygote may develop into a thin-walled oocyst (TW) which releases its sporozoites while in-situ, thus spreading infection within the host. Microvilli have been omitted from infected cells for clarity. (Reproduced with permission from Casemore, Sands and Curry [7].)

reptiles but are poorly characterized and in some cases erroneously identified as such [31, 34, 49, 50].

The biological and other features which determine the medical and epidemiological importance of the parasite are summarized in Table 1.

DISTRIBUTION OF HUMAN CRYPTOSPORIDIOSIS

Age and sex distribution

A variety of factors may bias laboratory study findings, particularly towards children. Specimens submitted to the laboratory are usually from selected populations and even when derived from general population groups are subject to a variety of ill-determined biases. Despite such biases, the use of laboratory based data is of value although care is needed in interpretation [25, 51, 52].

Early reports of cryptosporidiosis in humans were often of infection in adults, reflecting the high proportion of immunocompromised subjects among such cases [7]. Attention was drawn in 1983 to sporadic infection in the community, especially in otherwise normal children [13–15]. Several subsequent studies have confirmed a peak incidence in children aged 1–5 years in most areas. A secondary

Table 1. *Biological/epidemiological characteristics of Cryptosporidium parvum associated with transmissibility to man*

Lack of species specificity (host-species cross-transmissibility) (also lacks tissue specificity)
Ubiquitous (Man, food and companion animals – ?not avian species)
Monoxenous (Full development in single host species)
Oocyst excreted fully sporulated (no external ‘ripening’ required)
Oocysts excreted in large numbers (?enhanced by autoinfective cycle)
Probable low infective dose-size (? < = 10–100 oocysts)
Oocysts environmentally resistant
Oocysts resistant to common disinfectants
Faecal–oral mode of infection (Plus? others – aerosol, vomit, etc.)
Person-to-person transmission (especially young children)

peak in laboratory proven incidence may also be seen in adults aged 20–40 years and which may result from family contact with children, or occupational exposure [53, 54]. Detailed examination of laboratory data from a national PHLS surveillance study [55] (Tables 2, 3) shows that approximately 60% of positive findings are from children and 30% from adults aged less than 45 years. Hence, the role of *Cryptosporidium* in diarrhoeal disease in young adults should not be under-estimated. Cryptosporidiosis in susceptible adults may be particularly unpleasant and may occasionally lead to severe disease and even death in some cases [32] (D. Casemore, unpublished observations). In our experience clinical infection is uncommon over the age of 40 although it occurs from time to time. Asymptomatic infection may be found in adults who are close family contacts of cases. There is no evidence of increased incidence in the elderly. Infection in some Scandinavian countries appears to occur mainly in adults, most of whom acquire their infection abroad, especially Russia, or as a result of occupational exposure [18, 54, 56–58]. The reason for the preponderance of adult cases in Scandinavian countries and the relative infrequency of positive findings in children does not yet appear to have been adequately explained. Travellers would be predominantly adult: the low incidence in children may imply that autochthonous infection in Scandinavia is uncommon except in rural subjects in whom the infection is, apparently, often asymptomatic [58].

In the large 2-year PHLS UK survey [55] (Table 2) and locally in north Wales over more than 5 years [43, 53], infection was most common in the 1–5 years age group. These surveys included patients of all ages and examination of denominator data indicates that the peak is not the result of age sampling bias. Infection was less common in children aged under 1 year and occurred infrequently under 6 months of age. This pattern is similar to that reported by some others, in the UK [59], the USA [60], in rural Costa Rica [61], Liberia [62], Rwanda [17], Guinea-Bissau [63] and in Haiti [64]. However, in some other surveys in the UK [15, 65, 66], in Eire [67], and in some Third World countries [68–70], infection has been found to occur commonly in children aged less than a year. The reasons for these differences are not yet clear but may relate to levels of maternal immunity and of exposure [43, 45]. In rural settings in north Wales, clinical cryptosporidiosis in

Table 2. *Cryptosporidium*-positive stools – age distribution symptomatic patients in PHLs (CDSC- UK Survey 1985–87*

Age (years)	GP samples (n)	Positive (%)	Hospital (n)	Positive (%)
< 1	2057	31 (1.5)	3537	24 (0.7)
1–5	4520	183 (4.0)	1972	59 (3.0)
5–15	2160	88 (4.0)	1306	28 (2.1)
15–25	3491	70 (2.0)	1778	19 (1.0)
25–35	4079	75 (1.8)	1011	13 (1.3)
35–45	3049	35 (1.1)	795	7 (0.9)
45–55	2904	14 (0.5)	707	2 (0.3)
55–65	2060	7 (0.3)	1634	1 (0.1)
> 65	2987	12 (0.4)	5971	14 (0.2)
NK	2721	23 (0.8)	1861	3 (0.2)
Total	30043	538 (1.8)	20572	170 (0.8)

* Adapted from Palmer and Biffin [55].

adults, and in infants aged under 6 months, is particularly uncommon and tends to be mild. Infection in rural infants seems to occur most frequently when they are becoming mobile, are teething, and are changing to a shared diet, including in some cases raw cows' milk. At this point, maternally acquired immunity will also be waning. This pattern of incidence thus probably reflects both the frequency of exposure and levels of immunity, including passively acquired immunity. Corbett-Feeney [67] in Eire reported finding a protective effect in infants from breast feeding. This had previously been noted in some developing countries (see below). Though not studied critically, this would also appear to be the case in rural subjects in north Wales (D. Casemore, unpublished observation). There is, however, conflicting medical and veterinary evidence for the protective role of breast feeding and of colostral antibody in resistance to infection with *Cryptosporidium* [34, 43, 45]. Perinatal infection has been described and may lead to fetal distress or a failure to thrive [71, 72]. Extra-intestinal infection has been demonstrated but there is no evidence of transplacental transmission [32].

The distribution of cases by sex appears to be generally unremarkable. However, experience with campylobacter infections shows that detailed attention to rates of infection may reveal differences in both age- and sex-specific distribution to those shown by analysis of simple incidence figures [52]. Such detailed analysis has yet to be reported for *Cryptosporidium* infection.

Frequency of occurrence

Most early reports of human cryptosporidiosis were of single sporadic cases, small clusters of cases, or of short clinical series. Population surveys began to be reported in 1983, from Australia [14], Finland [18] and the UK [13], and subsequently from numerous other centres [7, 27–33]. Surveys were often of selected populations, usually based on specimens routinely submitted to the laboratory, and sometimes studied over short periods of time. Few studies were adequately controlled. Denominator figures were often not recorded other than as the total sample size. Other recognized potential pathogens were not always excluded. Accurate identification cannot be assumed in all studies (D. Casemore, unpublished data).

Table 3. Age-Group distribution of *Cryptosporidiosis* cases (PHLS National Survey)

Proportions of positives (excluding NKs)		
Age group	Numbers examined (% of total <i>n</i>)	Positive (% +ve) (% of all +ves)
0-14	18792 (33)	769 (4.1) (62.4)
15-44	23993 (42.4)	398 (1.7) (32.3)
45- > 65	13770 (24.3)	65 (0.47) (5.3)

Adapted from Palmer and Biffin [55].

Laboratory-based surveys are subject to a variety of biases, as discussed above. From some of these studies therefore, it is difficult to gain an accurate picture of incidence rates, or of prevalence, or even to demonstrate unequivocally an aetiological role. They do, however, indicate the ubiquity of the parasite.

A few surveys have shown low prevalence in certain areas (< 1%) and the need for routine laboratory screening has been questioned [73-79]. Generalized recommendations discouraging screening, when based on localized and sometimes short-term, low-yield studies, should be viewed with caution. Even if such low figures are an accurate reflection of local prevalence, the simplicity and low cost of such screening, together with the clinical, epidemiological, and other benefits obtained, suggest that the search for *Cryptosporidium* should now be undertaken by most laboratories, at least on selected specimens assessed over a sufficient period of time to allow for temporal variation [80-82].

Relative frequency of occurrence

In several studies, *Cryptosporidium* was found to occur as the third or fourth most commonly identified pathogen and at certain times was the most commonly detected of the agents looked for [17, 23, 30, 55, 59, 65, 67, 69, 80, 83, 84]. Such findings will tend to reflect the age of subjects sampled and seasonal variation in incidence of the different agents involved. Thus, in north Wales for example, although campylobacter is the most commonly identified enteric pathogen overall, and rotavirus in infants, during certain periods of the year *Cryptosporidium* is the most common finding in children. In the PHLS survey [55], *Cryptosporidium* occurred twice as often as salmonella and several times more commonly than shigella, in the 1-5 years age group over a 2-year study period.

Geographic distribution

Several reviews have tabulated the frequency of detection in a variety of survey populations in many countries worldwide [7, 27-30, 33]. Reported rates varied from less than 1% to more than 30%. Some of this variation may be attributed to genuine geographic variation, some to demographic or temporal factors. In some instances methodological factors may be important given the variation in sensitivity and specificity of the various methods used [24]. Composite tables of reported laboratory confirmed incidence generally yield average figures in developed countries of approximately 1-2% positivity overall and about 4% in children. As might be expected, reported rates are generally higher in Third World countries, especially in children.

Table 4. *Outbreaks of cryptosporidiosis in livestock animals reported to veterinary data collection centre (VIDA)*

Cattle	Jan.	Feb.	Mar.	Apr.	May	June	July	Aug.	Sept.	Oct.	Nov.	Dec.	Total
1984	14	34	43	45	15	7	11	10	8	21	21	24	253
1985	41	48	94	67	50	17	10	12	14	21	34	37	445
1986	53	44	41	54	32	13	22	20	26	25	44	64	438
1987	72	79	94	120	53	49	22	16	58	57	83	102	805
Total	180	205	272	286	150	86	65	58	106	124	182	227	1941
Sheep													
1984	0	1	5	16	3	0	0	0	0	0	0	1	26
1985	1	3	4	29	9	3	0	0	0	1	0	1	51
1986	3	3	1	34	14	1	0	0	1	0	0	0	57
1987	4	5	18	37	22	1	1	0	0	0	0	0	88
TOTAL	8	12	28	116	48	5	1	0	1	1	0	2	222

Data courtesy of Mr A. B. Davies (DVO, Bangor).

Temporal distribution and seasonality

Seasonal or temporal trends have been noted by a number of authors but these vary from country to country including; summer in Australia [14], rainy season in Central America [61] and India [85], spring [84] or late summer in north America [60, 86], and late summer in Germany [87]. Our own studies [43, 53, 88] and some others in the UK [55, 59, 65, 66] (CDS/CDSC, unpublished reports) and in Eire [67], indicate a peak of incidence in the spring and sometimes also in late autumn or early winter. These trends may indirectly reflect rainfall, farming events such as lambing and calving (Table 4), and practices such as slurry muck-spreading [53, 88]. Paradoxically, more detailed study of data from the PHLS study [55], failed to demonstrate clear seasonality nationally (S. R. Palmer, personal communication). Experience over the past 5 years suggests that outbreaks, or temporal clusters of apparently sporadic cases, occur in different parts of the UK, often at about the same time each year, but not recurring in the same locality year by year. Whether this relates to local herd immunity levels affecting either primary incidence or secondary person-to-person spread, or to other factors, is not yet known. Detailed sero-epidemiological studies might help in elucidating this [43, 45].

RESERVOIRS AND ROUTES OF TRANSMISSION

Zoonotic and non-zoonotic infections

The natural history of cryptosporidiosis is complex and involves both zoonotic and 'urban' or non-zoonotic reservoirs and modes of transmission.

Zoonotic transmission. Current and his co-workers drew attention to the association of human infection with exposure to infected calves [5]. In recent reviews, more than 40 host species from which *Cryptosporidium* species had been isolated have been listed [28, 31, 49, 89]. Cross-transmission has been demonstrated experimentally or naturally between a variety of host species [28, 31, 49, 89]. There is, therefore, a potentially large zoonotic reservoir of infection. Most

clinical infections in humans and livestock mammals, as stated above, are probably with a single species, *C. parvum*, which has spherical or slightly ovoid oocysts measuring some 4.5–5.0 μm [7, 31, 35, 36, 43]. Cryptosporidial oocysts morphologically identical to *C. muris*, and distinct from *C. parvum*, have been identified in cattle in the USA [35, 44] but the epidemiological importance of this is not yet clear. The oocysts are more ellipsoidal and measure approximately $6 \times 8 \mu\text{m}$. The parasite appears, as with the original isolate discovered in mice by Tyzzer, to be restricted to the glands of the stomach (abomasum) and is not associated with symptoms other than poor weight gain in some cases [44] (K. W. Angus, personal communication). *C. muris* infection has not yet been reported in man. Large ($\geq 8 \mu\text{m}$) spherical acid-fast objects sometimes found in human faeces, particularly in subjects from Asia and Africa, and thought by some to be cryptosporidia are probably fungal spores (D. Casemore, unpublished observation). The importance of measuring presumptive oocysts cannot be over-emphasized.

Livestock. Calves and lambs are commonly infected with *Cryptosporidium* in the UK. Pigs are susceptible to infection but this does not appear to be common. Infection in foals may be more common than is currently recognized. Deer and goats are increasingly commonly kept as stock animals and may be severely affected by cryptosporidiosis [2, 89]. Many human infections with *Cryptosporidium* are derived from livestock, particularly cattle, either directly, or indirectly. There is also evidence, at least in the UK, to implicate sheep in human infections [88, 90, 91]. The spring peak in incidence in humans in the UK closely parallels that reported by the Central Veterinary Laboratories for lambs (Table 4). In an outbreak in north Wales an association was noted in two related cases with exposure to infected bottle-fed orphan lambs [88]. A case-control study was subsequently carried out during 1988 which confirmed a significant association between human cryptosporidiosis in north Wales during March and April and contact with sheep or lambs, particularly between children and bottle-fed lambs ($P = 0.00006$) [90]. Similar association has again been noted in the spring of 1989 (D. Casemore, unpublished data). In some cases studied, the recently increasing trend towards lambing in deep litter sheds close to the farm house had led to increased exposure of family members and visitors to infection. Exposure sometimes occurred as a result of educational visits to working farms during the lambing season, or away from farms when lambs were taken to urban schools and nurseries for educational purposes. In several instances there was evidence of secondary spread within households or play-groups. Educational visits to farms and livestock markets may also lead to contact with other livestock such as calves which may also lead to cryptosporidiosis and to exposure to a variety of other infectious agents. There is, therefore, clearly a need for such zoonotic exposure to be controlled and for the importance of hygienic measures to be emphasised to those responsible. Guidelines to help limit hazards to children from this type of exposure have been circulated in the UK [92]. Zoonotic exposure of urban subjects also occurs when camping on farmland but, in such circumstances, exposure to more than one confounding risk factor (livestock animals, their excreta, raw milk and water, etc.) is common, often combined with lower standards of hygiene (D. Casemore, unpublished observations).

Although symptomatic infection in animals seems to be restricted generally to the very young, adult animals, especially deer, horses, pigs and sheep may excrete low numbers of oocysts [2, 89] (K. W. Angus, personal communication). Such excretors may provide a reservoir for the young of their own species and for humans. A number of cases of human cryptosporidiosis have been investigated in north Wales for whom the only identified risk factor was recent attendance at riding stables or recent delivery of horse manure for garden fertilizer use in which small numbers of oocysts were identified (D. P. Casemore and P. Robinson, unpublished data).

Companion animals. Companion animals have been shown to be infected [28, 31, 34, 54, 89] and have been implicated in human disease from time to time. They include cats [93, 94] and possibly dogs [86] (D. Casemore, unpublished observations). However, despite the frequency with which pets are present in households of infected patients, they do not seem to have been often implicated as a source of infection. With the possible exception of cats, companion animals probably do not represent a zoonotic reservoir for human cryptosporidiosis [2, 34]. The finding of small numbers of oocysts in the stools of household pets need not imply that the animal is the source of human infection. In a recent episode investigated in north Wales, the family pet labrador dog was found to be excreting small number of oocysts. The dog had shown signs of mild gastrointestinal upset at the same time as the first affected family member but was not sampled until some time later. A similar isolated incident had previously been encountered with a cat. It is difficult to interpret the significance of such findings as it was not possible to exclude the possibility that the pet and the humans had been exposed to a common source of infection. Wild rodents in the home may potentially transmit infection to pets directly or by contamination of food.

Occupational zoonotic exposure. Human infection has been documented following occupational exposure to naturally and experimentally infected animals, including during the inoculation of infected material, especially by veterinary students [54, 58, 85, 95–98]. A negative association has been noted in some instances between bovine and human cases, particularly with rural adults who are occupationally exposed [12, 86]. Occupational exposure probably leads to repeated mild or asymptomatic infection and high levels of immunity. Repeated or recurrent infection has been noted occasionally in sporadic cases [99] (D. Casemore and P. Robinson, unpublished observations). In two cases in north Wales, the second episode was clinically milder than the first. In such cases, it is not yet possible to distinguish between continued low-level or intermittent excretion, recrudescence of infection or reinfection.

Indirect zoonotic transmission. Occupationally exposed individuals may inadvertently carry infected material home with them to indirectly infect family members, especially toddlers. Such indirect transmission may have been the route for severe perinatal infection reported by Dale and co-workers [72]. In north Wales, indirect transmission was thought to have occurred on a number of occasions with toddler children of mechanical-digger operators living in urban areas, whose clothing and footwear had become contaminated with animal excreta while working on farms [43]. Rahman and his co-workers in Bangladesh emphasized the importance of person-to-person transmission among household contacts of calf handlers [85].

Food. The pattern of food-borne infection generally has been changing in recent years and an increasing variety of pathogens recognized [100]. Direct incrimination of food in the transmission of *Cryptosporidium* is hampered by the lack of the equivalent of bacteriological enrichment culture for recovery of small numbers of oocysts and for confirmation of viability. *In vitro* cultivation in tissue cultures and in fertile hens eggs is possible but does not result in amplification [31, 34].

Based on epidemiological evidence, consumption of certain foods, especially sausages, offal, and raw milk appear to be risk factors [53, 55, 59, 83, 88, 101]. An unexpected finding of the study in north Wales [43, 53, 88] was the frequency with which sausages were admitted to have been consumed raw, either prior to cooking during meal preparation or even by using the contents as a pate. This practice is now known to occur elsewhere in the UK. The risks of bacterial milk-borne infection are well established [102]. The retail sale of raw milk continues to provide a vehicle or source of infection with a variety of agents, especially in rural areas. The epidemiological evidence adduced for the association of raw milk consumption with transmission of *Cryptosporidium* emphasizes further the need for pasteurization of all milk supplies. Clinical cryptosporidiosis associated with raw milk consumption in north Wales appears to occur most often in those who only occasionally consume it or have recently commenced doing so. Presumably those who regularly consume raw milk will maintain sufficient levels of immunity to prevent symptomatic infection. Whether infection from milk arises as a result of faecal contamination or from ascending infection of the teat duct is not yet known.

Environmental sources

Co-infection with *Giardia* has been noted in some cases, particularly in travellers (see below), suggesting the possibility of contaminated water or fruit and vegetables, as a source of infection as well as by person-to-person transmission [56, 60, 74, 103–105]. Water-borne giardiasis has been reported from the UK [106]. Environmental sources of such infection have been identified in the USA and may occur more commonly than is currently realised [107–109]. This may result from either human or animal pollution of the environment in the case of both these parasites.

Several studies have noted temporal or seasonal peaks in incidence of cryptosporidiosis (see above) which in some cases coincided with periods of maximal rainfall. The widespread practice, even in advanced countries, of disposal of both animal and human excreta to land, e.g. by muck and slurry spreading on pasture, may lead to infection directly, by aerosol spread, or indirectly by contamination of water courses and reservoir feeder streams. Surface waters polluted naturally or by these practices may lead to contamination of water supplies or of food crops during irrigation. *Giardia lamblia* may share a common mode of transmission via water or food polluted by sewage as noted above. Methods have been developed for the investigation of water (see below). Using such methods contaminated water has been identified including surface waters, and in a few instances potable supplies, in the UK [43, 50, 88, 110–112] and in North America [105, 107–109, 113–117]. A number of cases or outbreaks have been investigated in which water was thought to have been the route of transmission. The epidemiological investigation of an outbreak in Texas in 1984,

described by D'Antonio and others [118], suggested contamination of the communal water supply with human sewage. Other cases in New Mexico, USA, also investigated epidemiologically, have been attributed to the water route [119, 120] involving swimming in, or consumption of, surface water.

One confirmed water-borne outbreak in Carrolltown, Georgia, USA, resulted in an estimated 13000 cases [121, 122]. This followed a partial failure of the water treatment system, particularly of flocculation, of river water abstracted for the municipal supply at a time of high demand although the water met all EPA quality standards. Although the river flowed through cattle pasture, evidence of infection was lacking in cattle on that land but there was evidence of pollution with sewage. Breakthrough may have resulted from unusually heavy challenge from a bolus of heavily polluted water at a time when the flocculant mixing mechanism was operating at less than optimal efficiency (J. Rose, personal communication). The finding of apparently satisfactory standards for the water may have resulted from sampling at an inappropriate point – at the point of distribution. For example, for turbidity levels, it is essential to check individual treatment plant sections (filter outputs) prior to mixing. In this episode, failure to adequately back-wash some filters almost certainly led to part of the supply having raised turbidity levels (> 1 nephelometric turbidity unit, NTU) although the final mixed supply had a satisfactory NTU value.

Several possible waterborne outbreaks have been investigated in England and Wales but most have not been confirmed [43, 50, 123, 124] (D. Casemore, unpublished data). Most of these investigations, however, preceded the availability of the methods described below. Some outbreaks, at first thought to be waterborne, have shown epidemic curves suggestive of urban transmission when examined in detail [124]. Nonetheless, the initial cluster of cases may well have been of water-borne infection followed by person-to-person transmission. In a few sporadic cases investigated in north Wales, the only risk factor identified has been a breakdown in the local water supply during the preceding 1–2 weeks [53]. In an outbreak in the Sheffield area [50, 112] cases showed a statistical association with consumption of potable water. Oocysts were demonstrated in surface waters in the catchment area and in cattle grazing on catchment land. An outbreak of cryptosporidiosis in Scotland [110, 111] was confirmed both epidemiologically and microbiologically as water-borne. Contaminated surface water shown to contain oocysts gained access to the treated potable supply via a previously undetected land drain and resulted in at least 27 confirmed cases, of whom 12 were admitted to hospital. Other outbreaks and clusters of cases have occurred more recently in different parts of the UK some of which may have been water-borne although proof is lacking in most cases.

Early in 1989, a very large outbreak of cryptosporidiosis occurred in the Oxford and Swindon areas of England supplied by Thames Water Authority [125, 126]. This has been attributed to consumption of contaminated potable water supplies derived from a polluted reservoir. Samples were taken and examined using the methods developed in the USA, originally for *Giardia* and subsequently adapted by Rose and her co-workers [113, 114, 116]. Surface water, water-treatment filter backwash samples, and potable water were all shown to contain oocysts (J. Colbourne, personal communication). The total number of cases attributable to

the water is difficult to estimate but 516 confirmed cases were identified in the affected area during the course of the outbreak between late December and late April (R. Mayon White, personal communication). The size of the outbreak and the public recognition of risk from treated water caused considerable media and political interest and concern. A number of issues were raised by the outbreak which have been addressed by a Government committee of enquiry and others [125–128]. These include, for example: the practical difficulties of the sampling methodology; the significance of changes in water-treatment practice including the change of flocculants used resulting from concern about the use of aluminium compounds; the problems arising from imposition of a water 'boiling order' including the practical difficulties this imposes upon hospitals and food industry users, and the relative risks of acquiring infection and of scalding injuries.

The safe disposal of sewage and the provision of safe water supplies have been pursued for more than a century [25, 129–131]. For largely historical reasons, standards for evaluating the wholesomeness of potable supplies are based primarily on bacteriological parameters. The demonstration of transmission of *Cryptosporidium*, and *Giardia*, via potable water demonstrates that the safety of such supplies cannot be assumed. Neither can the standard bacteriological parameters be used to guarantee freedom from the risk of infection. The fiscal and political implications of this situation are considerable. Currently, only adequate physical methods of removal are likely to be effective. Although breakthrough of such treatment systems resulting from a heavy challenge may account for some episodes, some areas of the country receive water which is chemically treated but unfiltered. It is probable that, where filtration and/or flocculation are missing or defective, contamination of water supplies will occur which, with the known resistance of oocysts to chemical disinfection [1, 3, 132–135], makes it likely that further outbreaks will be confirmed. The results of more recent disinfection studies are described below. Contamination of water supplies may in some cases be low-level and intermittent making monitoring difficult. Such contamination may account for some unexplained sporadic cases or small clusters of cases. The precise identity and the viability of oocysts found in water or other environmental samples cannot yet be reliably determined. Their significance is therefore likely to be uncertain although their presence should be taken as presumptive evidence for remedial action.

An outbreak of more than 70 cases of cryptosporidiosis associated with a swimming pool has been reported in the UK [136]. Defects in pool filtration and of sewage disposal resulted in pollution of the pool water. The only controlling factors currently for *Cryptosporidium*, if faecal contamination of a pool occurs from someone excreting oocysts, are dilution and efficient filtration. However, it is probable that in well-managed pools this infection will not normally be a problem. In the event of an outbreak being suspected, the pool should be closed and flocculants used, with backwashing to waste, to increase filtration efficiency. Increasing the temperature of the water to ≥ 45 °C may also be used to kill oocysts. The activity of other disinfection systems is currently under investigation (see below).

Raw surface waters and private untreated supplies may be consumed by susceptible individuals, especially those engaged in outdoor pursuits such as

camping. This clearly carries a risk of acquiring enteric infection including cryptosporidiosis. Chemical treatment tablets may have little effect on the cysts of *Giardia* and *Cryptosporidium* but both are susceptible to heat treatment (see below).

Investigating environmental routes and reservoirs. The obligate parasitic nature and the ubiquity of *Cryptosporidium*, the variable but possible long incubation period, and the potential for subsequent person-to-person transmission, all make epidemiological investigation difficult. As with possible food-borne infection, the lack of an equivalent of bacterial enrichment culture is a constraint on investigation of environmental sources. Systems for the recovery and detection of oocysts from water have been developed, including Moore's swabs [43, 88, 124] and membrane [50, 112] or cartridge filtration [107–111, 113–117, 122, 137], usually combined with centrifugation and or flotation. Cartridge filtration was extensively used and evaluated in the UK during the outbreaks in Scotland [110, 111, 137] and in Oxford and Swindon (J. Colbourne, personal communication). A tentative standard method has been produced in the UK, under the auspices of the Department of the Environment (DoE) Standing Committee of Analysts, based on the same methodology. The method can be made quantitative but gives no indication of either viability of oocysts or of their pathogenicity or virulence for man. The methods for recovery and identification of oocysts are time-consuming and labour-intensive and are unsuitable for routine public-health monitoring purposes on any scale.

Caution is needed in identifying objects found in water samples as oocysts of *Cryptosporidium*. Conventional tinctorial methods are of limited value because a variety of fungal spores and other objects resembling oocysts may be found in environmental samples, particularly by modified Ziehl–Neelsen and saffranin staining. These may be present in addition to genuine oocysts. Accurate size measurement is helpful, oocysts of *C. parvum* having a modal size, in stained preparations, of 4.5–5.0 μm [43]. The identity and significance of isolates from fish from reservoirs is uncertain as these have not yet been characterized. Detection and definitive identification of oocysts in clinical or environmental samples may be achieved by means of immunologically-based test such as immunofluorescence (IFAT) using either polyclonal [88, 115, 124, 138] or by monoclonal antibody [107–111, 113, 114, 116, 120, 139–142], by ELISA [112] or by latex agglutination [54, 143]. However, caution is needed as some antibodies, particularly monoclonals, may be too restrictive in the antigens which they will recognize. Others, particularly polyclonals, may detect group antigens present in cryptosporidia, from both mammalian and avian or other host species, which are of doubtful medical significance or cross-react with other objects such as yeasts. There appears to be incomplete concordance in the findings with the two monoclonals currently available. Oocysts exposed to water treatment, especially to chlorine, may be both morphologically and antigenically altered [135] (D. Casemore, unpublished observation; J. Colbourne, personal communication). The monoclonal antibody described by McLauchlin and co-workers [141] has reacted with all human isolates so far tested in the author's laboratory, but reacts also, though less intensely, with *C. muris* and *C. baileyi*. It appears to work well with environmental samples, oocysts often showing a clearly defined suture or surface fold. Cross-reactivity has

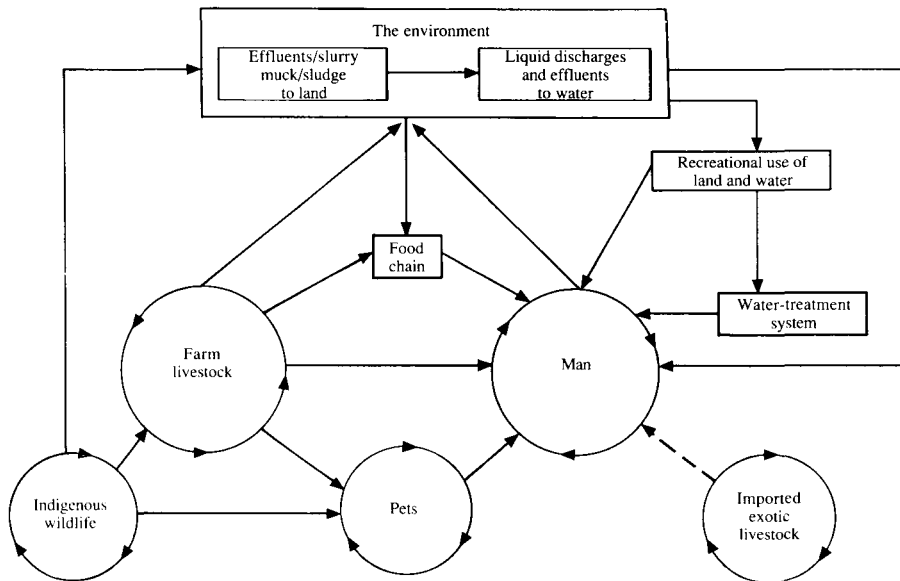


Fig. 3. Reservoirs and routes of transmission of *Cryptosporidium*.

not been noted with a variety of fungal species tested including yeasts, and some *Mucor* spp. which produce acid-fast spores of approximately $5\ \mu\text{m}$ (D. Casemore, unpublished observations). The monoclonal antibody used by American workers reacts specifically with *C. parvum* but not *C. baileyi* [140] or *C. muris*.

There is a need to develop more sensitive but specific methods of detection which do not depend upon the labour-intensive and essentially subjective microscopical IFAT, particularly for screening out negative samples. These may be based upon ELISA, or gene-probe or polymerized chain reaction technology. There is also a need to be able to assess viability [135] and to identify and distinguish antigenic or iso-enzyme types. Little is currently known about the infectious dose-size (see below) and hence of the epidemiological significance of small numbers of oocysts.

The various potential reservoirs and routes of transmission are outlined in Fig. 3. Epidemiological investigation is often confounded by the presence of more than one of the risk factors indicated [88].

Urban or non-zoonotic transmission

Person-to-person transmission is now recognized to be common, thus confirming the hypothesis that cryptosporidiosis is not necessarily a zoonosis [12]. Infection is transmitted within families [53, 88, 144–148] in day-care centres [53, 144, 145, 149–152], and elsewhere in an urban environment [53, 59, 153–159]. Opportunities for the spread of enteric infections in some Western urban day-care centres may rival those in some Third-World countries [103]. Both sporadic and day-care centre outbreak cases are often associated with confirmed secondary cases among families or of a history of recent diarrhoea among contacts who had not been investigated. Asymptomatic family contacts of confirmed cases are sometimes

found to excrete oocysts in small numbers [53, 88]. The existence of an asymptomatic carrier state, possibly involving the bile duct, has been reported [158] (see below). Clinically mild cases and asymptomatic excretors may provide a hidden reservoir of infection in the community. Evidence of either point-source or person-to-person transmission may be seen in family outbreaks [53]. Most urban infection probably occurs by the faecal-oral route, directly or via fomites. However, *Cryptosporidium* has been found in sputum and in vomit [32, 88, 159] and these may provide additional vehicles of transmission.

Nosocomial infection. Hospital cross infection, from patients to staff, has been documented and is further evidence of person-to-person transmission, [155–157]. The reverse route, or patient-to-patient transmission, is clearly possible and is of considerable potential importance for immunocompromised patients. There is a risk of indirect transmission via endoscopes, etc. [134, 160]. Given the known resistance of oocysts to disinfectants (see below), it is surprising that nosocomially acquired infection has not been documented more frequently.

Sexual transmission. *Cryptosporidium* may contribute to the so-called 'gay bowel syndrome' of sexually transmitted enteric infection [6, 7, 161]. However, continuing surveillance of infected practising homosexuals has failed to demonstrate an increased incidence of secondary cases in their partners (R. Soave, personal communication).

Travellers' diarrhoea. The infection has emerged as an important cause of travellers' diarrhoea [18, 19, 53–57, 104, 162–164]. Such cases often have mixed infections, especially with *Giardia*, suggesting a common epidemiology involving contaminated water or food. Increased exposure to livestock may be important in some areas. Direct and indirect person-to-person transmission will also be important given the generally poor hygienic conditions which prevail in many under-developed countries [165]. There is evidence to implicate flies in transmission in the Third World (C. Sterling, personal communication).

Travellers' diarrhoea is usually associated with travel to less-developed countries. However, urban subjects in the UK have sometimes been shown to have acquired infection when holidaying in more rural areas of the same country or in Western Europe. This often appears to be associated with consumption of raw (untreated) milk or water, or uncooked sausage, and with exposure to livestock [53, 55] (CDSC, unpublished reports; D. Casmore, unpublished observations).

Indigenous (autochthonous) infection in the Third World

Cryptosporidium has been reported from many Third World countries where it may be associated with severe morbidity and sometimes mortality or with asymptomatic infection. The reported age-specific rates of infection differ in different areas of the world and the reason for this is not yet clear. Mata [61] found such differences in incidence to occur between urban and rural populations in Central America which he attributed to differences in breastfeeding practices. An apparent protective effect from breast feeding was also noted in Haiti [64] and in Guatamala [68]. Hojlyng and his co-workers [62] in Liberia, reported a positive association with bottle feeding and with overcrowding in urban slums; Malla and co-workers [166] in India made positive links with bottle-feeding in rural children. Increased opportunity for exposure, in bottle-fed infants, and in children who are

being weaned may be as important as the immunological properties of breast milk for the differing rates of infection [167]. The evidence for the role of humoral immunity in resistance to cryptosporidiosis is conflicting [43, 45]. Transplacentally acquired passive immunity may be important and may explain the apparent low incidence of infection in infants under 6 months of age reported by some workers. Mathan and co-workers [70] in Southern India reported a high rate of asymptomatic infection in Southern Indian children and questioned the significance of the parasite. This differs from most other reports and the validity of the authors interpretation has been questioned [168]. However, such a pattern may reflect hyperendemicity with high levels of exposure and of antibody. There may be close association with livestock from an early age. Rahman and co-workers [85] emphasized the importance of person-to-person transmission among families of calf handlers, presumably introduced into the household from their animals. Carstensen and his co-workers [63] point out that the age-specific prevalence of cryptosporidiosis in their study was the reverse of that for most parasitic infections and suggest that early infection, probably by person-to-person transmission is followed by immunity to clinical infection. On the other hand, immunity impaired by malnutrition may delay clearing and hence prolong excretion. Cryptosporidiosis in the malnourished has been linked to severe persistent or chronic diarrhoea [169–171] which, in turn, may further increase the malnourishment. The severe diarrhoea sometimes associated with measles may be exacerbated by cryptosporidiosis in some cases [32].

Ethnic differences. Some reports have indicated differences in incidence in particular ethnic groups within the same study area, particularly of lower rates among muslims, which may reflect dietary differences, differing exposure to livestock animals, or to toileting practices [59, 62] (T. Rowbotham, personal communication).

Mixed enteric infections

Polymicrobial infections are commonly found in subjects in developing countries and are now more commonly being recognized in developed countries, especially in AIDS sufferers. Although, in immunocompetent subjects, *Cryptosporidium* is most commonly found as the sole recognized enteric pathogen, a variety of agents have been reported in mixed infections. In developed countries, concurrent infection with such agents as *Giardia* [53, 60, 104, 105], *Campylobacter* [53, 67, 88] and *Shigella sonnei* [153], may indicate a common epidemiology and dual transmission in some of those cases. Mixed infection with *Cryptosporidium* plus *Giardia* have been noted particularly with children in day-care centres and in travellers to Leningrad. However, such infections may not always be significantly associated [74, 152] and may, particularly in under-developed countries, represent overlapping sequential infection or coincidental carriage of one agent detected as a result of acute infection with the other.

Incubation and excretion periods

The prepatent (incubation) period in naturally and experimentally infected animals has been shown to be usually 2–5 days, and the patent (excretion) period about 8–14 days, range < 7 to > 28 days [1, 2, 53, 66, 172–176]. Attempts have

been made to define incubation and excretion periods in man, both of which factors are epidemiologically important. Because of the ubiquity of the parasite and the diversity of potential sources and routes of transmission (see Fig. 3), it is usually not possible accurately to define the incubation period [177]. However, accidental laboratory infection [97] or other detailed exposure histories [18, 66, 95, 97, 104, 146, 174] suggest an incubation period of about 3 days to a week but longer in some cases. Some estimates are based on assumptions which may not be valid and ignore the existence of confounding factors. Periods of as little as 1 day have been suggested [174] but earlier exposure, or prior or co-infection with other agents having shorter incubation periods such as viruses, were not excluded [177]. The effect of infecting dose size is discussed below.

During the acute diarrhoeal phase, oocyst numbers may exceed $10^6/\text{cm}^3$ of stool. However, numbers of oocysts excreted during the course of the infection may fluctuate markedly and formed or semi-formed stools may be found to contain many oocysts while some fluid stools may contain few. The stools of some patients become oocyst-negative rapidly after cessation of their diarrhoea while others continue to excrete for a prolonged period, sometimes associated with the continuation of other symptoms. Accurate determination of the excretion period is limited by the availability of sequential specimens and by the sensitivity of oocyst detection systems. Excretion in immunologically normal subjects, assessed by conventional tinctorial methods, usually seems to cease within 1–4 weeks of clinical resolution but may be longer in some cases [32, 43, 53, 99, 174–176]. Use of a more sensitive IFAT method suggests that excretion may continue for longer [140, 141, 178]. The existence has been reported of ‘atypical’ oocysts not detectable by conventional staining methods [179–180]. Large numbers of oocysts may be detected in some stool samples when stained by IFAT, of which the majority can not be detected by other methods, even as unstained ‘ghosts’ [141] (D. Casemore, unpublished observation). The significance of these findings in relation to infectivity and control needs further elucidation.

Infection in immunocompromised subjects is sometimes mild or resolves unexpectedly [181, 182] but the reason for this is not currently known. In some such cases anti-HIV treatment may permit sufficient immune response to return to induce control of the infection. This may parallel the situation reported in some leukaemic subjects [32]. Immunocompromised cases may harbour the parasite in the bile duct. Involvement of the bile duct has not yet been demonstrated in immunologically normal subjects [159]. One small study has adduced evidence for asymptomatic carriage by detection of oocysts in duodenal aspirates [158]. Endogenous stages were not found in biopsy sections but these may be easily overlooked [7]. The subjects did not have diarrhoea and oocysts were found in only a small proportion of their stool samples. Studies on more than 100 endoscopy fluids in north Wales have so far failed to confirm these findings (Casemore and Tynan, unpublished data). If the finding is confirmed, such cases may excrete oocysts at rates below the current threshold for detection but might, nonetheless, provide a reservoir of infection.

Infectivity and resistance

Little is known of the infectious dose size but it is thought to be small [28, 97, 183]. Infectious dose sizes in single figures have been determined for some other

protozoan cysts such as *Giardia* (D. Warhurst, personal communication). Experimental studies by Ernest and his co-workers [184] suggest that there may be a larger minimum infectious dose size and that the proportion of exposed subjects developing infection is a function of the dose size. Conversely, a low infecting dose size may simply extend the incubation period or reduce the likelihood of symptomatic expression. The possibility of a small infecting dose size, together with the known resistance of oocysts [1, 3, 4, 31, 132–135], emphasizes the potential for nosocomial and environmental transmission. Ten to 25% commercial bleach may be used for bacterial decontamination of oocyst samples prior to animal inoculation without significantly reducing infectivity [31] although a reduction in *in vitro* excystation may occur. In studies using an *in vitro* excystation model, plus newborn mouse inoculation for confirmation [133, 134], some compounds tested showed an effect in preliminary screening but, as might be expected, were ineffective when retested in the presence of protein. Some showed more effect if used at temperatures above ambient. Of the common disinfectants and antiseptics assayed, only 10 vol. hydrogen peroxide was found to be rapidly effective at ambient temperature and was unaffected by the presence of protein. An agricultural proprietary product, Oo-cide (Antec International Ltd) was also found to be effective but this depends upon the action of ammonia with a biocide in a highly alkaline solution and is unsuitable for medical or domestic use. Its use in the treatment of a polluted swimming pool (see above) led to considerable damage to the activated sludge system of the receiving sewage works. Oocysts are susceptible to freezing, to heating above 45 °C for 5–20 min, and to drying [133, 173, 185–187]. U.v. irradiation appeared to have some effect but less than that on bacteria or yeast cells similarly exposed (D. Blewett, S. E. Wright and D. Casemore, unpublished observations). Ozone at high concentrations (*c.* 2.0 mg/l) has been reported to kill oocysts [188] but in other, preliminary, experiments exposure of oocysts at the time/temperature/concentration levels likely to be found in swimming-pool water treatment, excystation levels were not reduced (D. Casemore, unpublished observations). Laboratory scale studies by Upton and his co-workers show that penta iodide resin may be capable of removing oocysts from water, probably by electrostatic forces [189] but the practical implications of this finding are uncertain. Thus, further studies are required to identify effective disinfectants suitable for domestic, hospital, and water-treatment purposes.

Seroepidemiology

Several attempts have been made to carry out serological studies using IFAT, ELISA, or laser densitometry [43, 45, 50, 88, 122, 156, 162, 190–196]. The significance of the findings in these preliminary reports is unclear because of variations in methodology. Some studies have employed infected tissues containing endogenous stages as antigen while others have employed purified oocysts. Studies on oocysts have indicated that, as might be anticipated, they are antigenically complex but include some common antigens [46, 140, 194, 195, 197–199]. The effect which differences in antigen source or test system might have is not clear but it has been suggested that titres may be significantly higher using sporozoites or endogenous stages as antigen [4, 45]. In some cases, titres were found to vary according to the host species from which the oocysts were derived

suggesting the possibility of different antigenic types [43, 45, 46]. In some studies, persistent IgA and or IgM, and poor IgG responses were reported. There is some evidence of pre-existing immunity in asymptomatic close family contacts of cases consistent with immunity, presumably associated with previous exposure [43, 45]. This seemed, in the north Wales study, to be associated mainly with the presence of IgG. As might be expected, seroprevalence rates tend to be much higher than the frequency of oocyst detection. In addition to giving some indication of prevalence in particular populations some of these studies have yielded information on the pattern of the immune response of value in the study of pathogenesis. Such studies may also provide alternative evidence of cases occurring in outbreaks [43, 45, 122]. Further studies are required to elucidate some of the questions raised.

Molecular epidemiology. Typing of epidemiologically important isolates of infective agents has usually depended on biotyping methods, based on both phenotypic and genotypic characteristics. The use of so-called 'molecular epidemiology' has proved of great value in the study of epidemiology, particularly of viruses [200]. Given the obligate parasitic nature of *Cryptosporidium*, the typing and sub-typing of isolates below species level must depend largely upon such molecular methods. Antigen and antibody analysis at the molecular level may yield epidemiologically useful information. Isoenzyme (zymodeme) profiling as used in the sub-typing of potentially pathogenic amoebae [201] may also be of value. The extraction and purification of nucleic acids and other molecular components has been achieved thus leading the way to the production of gene-probes and to other more sensitive means of detection and identification (D. Blewett and N. Gordon, personal communication).

CONCLUSION

Cryptosporidium sp. has emerged worldwide during the 1980s as an important cause of acute, often protracted but self-limited gastroenteritis in normal individuals while, in the immunocompromised, the infection may often prove chronic and life threatening. Infection in some cases extends beyond the gastrointestinal tract [32, 159]. The importance of close collaboration between veterinary and medical workers for the control of zoonoses has been emphasised [202]. Much has been learned from such collaboration about *Cryptosporidium* and human cryptosporidiosis. Molecular methods for the study of epidemiology are already under way, particularly by veterinary workers who have contributed so much to the understanding of human cryptosporidiosis. The infection is transmitted by both zoonotic and urban routes. It occurs sporadically and in both family and community outbreaks and is more common in children and young adults. There is a variable geographic and temporal distribution of incidence. Given awareness of the infection, the diagnosis may be achieved simply and relatively inexpensively, thus alerting others to the risk of transmission. In times of great fiscal constraint it is tempting to ignore the search for a pathogen which in some geographical areas, and at certain times, may have a low prevalence. In the hospital setting, such patients represent a potential source of nosocomial infection. The severity of the infection, particularly in the Third World and in the

ever increasing numbers of immunocompromised patients, makes awareness and control of the infection essential. In the UK, and elsewhere, cryptosporidiosis may be the most commonly detected enteric pathogen affecting AIDS patients [159, 203]. Control of human cryptosporidiosis can be achieved only by a thorough understanding of its natural history and epidemiology. Despite the advances made, much remains to be learned.

ACKNOWLEDGMENTS:

It is a pleasure to record my gratitude to the staff of the Rhyl PHL; to Dr S. R. Palmer, Communicable Disease Surveillance Centre, Welsh Unit; staff at the Moredun Institute, Edinburgh, and Mr A. Davies, DVO, Bangor for their help.

D. P. CASEMORE

*Public Health Laboratory and Department of Microbiology,
Glan Clwyd Hospital,
Bodelwyddan,
Clwyd LL18 5UJ*

REFERENCES

1. Angus KW. Cryptosporidiosis in man, domestic animals and birds: a review. *J Roy Soc Med* 1983; **76**: 62–70.
2. Angus KW. Mammalian cryptosporidiosis: a veterinary perspective. In: Angus KW, Blewett DA, eds. *Cryptosporidiosis. Proceedings of the First International Workshop*. Edinburgh: Moredun Research Institute, 1988: 43–53.
3. Tzipori S. Cryptosporidiosis in animals and humans. *Microbiol Rev*. 1983; **47**: 84–96.
4. Tzipori S. Cryptosporidiosis in perspective. In: Baker JR, Muller R, eds. *Advances in parasitology*, vol. 27. London: Academic Press, 1988: 63–129.
5. Current WL, Reese NC, Ernst JV, et al. Human cryptosporidiosis in immunocompetent and immunodeficient persons. *New Eng J Med* 1983; **308**: 1252–7.
6. Pitlik SD, Fainstain V, Garza D, et al. Human cryptosporidiosis: Spectrum of disease. *Arch Intern Med* 1983; **143**: 2269–75.
7. Casemore DP, Sands RL, Curry A. *Cryptosporidium* species a 'new' human pathogen. *J Clin Pathol* 1985; **38**: 1321–36.
8. Tzipori S, Angus KW, Gray EW, Campbell I. Vomiting and diarrhea associated with cryptosporidial infection. *New Eng J Med* 1980; **383**: 818.
9. Bird RG, Smith MD. Cryptosporidiosis in man: parasite life cycle and fine structural pathology. *Pathology* 1980; **132**: 217–33.
10. Ericsson CD, DuPont HL. *Cryptosporidium* and diarrhoea. *Lancet* 1983; ii: 914.
11. Schultz MG. Emerging zoonoses. *New Eng J Med* 1983; **308**: 1285–6.
12. Casemore DP, Jackson FB. Hypothesis: cryptosporidiosis in human beings is not primarily a zoonosis. *J Infect* 1984; **9**: 153–6.
13. Casemore DP, Jackson FB. Sporadic cryptosporidiosis in children. *Lancet* 1983; ii: 679.
14. Tzipori S, Smith M, Birch C, Barnes G, Bishop R. Cryptosporidiosis in hospital patients with gastroenteritis. *Am J Trop Med Hyg* 1983; **32**: 931–4.
15. Hart CA, Baxby D, Blundell N. Gastro-enteritis due to *Cryptosporidium*: a prospective survey in a children's hospital. *J Infect* 1984; **9**: 264–70.
16. Hojlyng N, Molbak K, Jepsen S, Hansson AP. Cryptosporidiosis in Liberian children. *Lancet* 1984; i: 734.
17. Bogaerts J, Lepage P, Rouvroy D, Vandepitte J. *Cryptosporidium* spp., a frequent cause of diarrhea in central Africa. *J Clin Microbiol* 1984; **20**: 874–6.
18. Jokipii L, Pohjola S, Jokipii AMM. *Cryptosporidium*: a frequent finding in patients with gastrointestinal symptoms. *Lancet* 1983; ii: 358–61.

19. Holten-Andersen W, Gerstoft J, Henriksen SA, Pedersen NS. Prevalence of *Cryptosporidium* among patients with acute enteric infection. *J Infect* 1984; **9**: 277–82.
20. Ma P, Soave R. Three-step stool examination for cryptosporidiosis in 10 homosexual men with protracted watery diarrhea. *J Infect Dis* 1983; **147**: 824–8.
21. Garcia LS, Bruckner DA, Brewer TC, Shimizu RY. Techniques for the recovery and identification of cryptosporidium oocysts from stool specimens. *J Clin Microbiol* 1983; **18**: 185–90.
22. Baxby D, Blundell N, Hart CA. The development and performance of a simple, sensitive method for the detection of *Cryptosporidium* oocysts in faeces. *J Hyg* 1984; **92**: 317–23.
23. Nichols G, Thom BT. Screening for cryptosporidium in stools. *Lancet* 1984; **i**: 735.
24. Casemore DP, Armstrong M, Sands RL. Laboratory diagnosis of cryptosporidiosis. *J Clin Pathol* 1985; **38**: 1337–41.
25. Galbraith NS. The application of epidemiological methods in the investigation and control of an acute episode of infection. In: Holland WW, Detels R, Knox G, eds. *Oxford textbook of public health*. Oxford: Oxford University Press, 1985; vol. 4: 3–21.
26. DuPont HL. Cryptosporidiosis and the healthy host. *New Eng J Med* 1985; **312**: 1319–20.
27. Soave R, Armstrong D. *Cryptosporidium* and cryptosporidiosis. *Rev Infect Dis* 1986; **8**: 1012–23.
28. Fayer R, Ungar LP. *Cryptosporidium* spp. and cryptosporidiosis. *Microbiol Rev* 1986; **50**: 458–83.
29. Ma P. Cryptosporidiosis and immune enteropathy: a review. In: Remington JS, Swartz MN, eds. *Current clinical topics in infectious diseases*. New York: McGraw-Hill, 1987; 99–149.
30. Hart CA, Baxby D. Cryptosporidiosis in children. *Pediatr Rev Commun* 1987; **1**: 311–41.
31. Current WL. *Cryptosporidium*: its biology and potential for environmental transmission. *CRC Crit Rev Envir Contr* 1986; **17**: 21–51.
32. Casemore DP. Human cryptosporidiosis. In: Reeves D, Geddes A, eds. *Recent advances in infection*, No. 3. Edinburgh: Churchill Livingstone, 1988; 209–36.
33. Janoff EN, Reller LB. *Cryptosporidium* species, a protean protozoan. *J Clin Microbiol*, 1987 **25**: 967–75.
34. Current WL. *Cryptosporidium* and cryptosporidiosis. In: Angus KW, Blewett DA, eds. *Cryptosporidiosis*. Proceedings of the First International Workshop. Edinburgh: Moredun Research Institute, 1988; 1–17.
35. Upton SJ, Current WL. The species of *Cryptosporidium* (Apicomplexa: Cryptosporidiidae) infecting mammals. *Am Soc Parasitol* 1985; **71**: 625–9.
36. Current WL, Reese NC. A comparison of endogenous development of three isolates of *Cryptosporidium* in suckling mice. *J Protozool* 1986; **33**: 98–108.
37. Tzipori S, Angus KW, Campbell I, Gray EW. *Cryptosporidium*: Evidence for a single-species genus. *Infect Immun* 1980; **30**: 884–6.
38. Tyzzer EE. A sporozoan in the peptic glands of the common mouse. *Proc Soc Exp Biol Med* 1907–08; **5**: 12–13.
39. Tyzzer EE. Extracellular coccidium, *Cryptosporidium muris* (Gen et sp nov) of the gastric glands of the common mouse. *J Med Res* 1910; **23**: 487–509.
40. Tyzzer EE. *Cryptosporidium parvum* (sp. nov.), a coccidium found in the small intestine of the common mouse. *Archiv für Protistenkunde* 1912; **26**: 394–412.
41. Anonymous. Health and parasites of a wild mouse population. *Proc Zool Soc London* 1931 (3): 607–878.
42. Klesius PH, Haynes TB, Malo LK. Infectivity of *Cryptosporidium* sp. isolated from wild mice for calves and mice. *JAVMA* 1986; **189**: 192–3.
43. Casemore DP. Gastroenteritis in a semi-rural population (The emergence of a 'new' pathogen, *Cryptosporidium*). PhD Thesis, 1987; School of Pharmacy, Liverpool.
44. Anderson BC. *Cryptosporidium* species in cattle. In: Angus KW, Blewett DA, eds. *Cryptosporidiosis*. Proceedings of the First International Workshop. Edinburgh: Moredun Institute, 1988; 55–63.
45. Casemore DP. The antibody response to *Cryptosporidium*: development of a serological test and its use in a study of immunologically normal persons. *J Infect* 1987; **14**: 125–34.
46. Nichols G, Dhanraj S, McLauchlin J. Characterization of oocyst surface antigens of

- Cryptosporidium* spp. (Abstract) In: Angus KW, Blewett DA, eds. *Cryptosporidiosis*. Proceedings of the First International Workshop. Edinburgh: Moredun Research Institute, 1988: 121.
47. Current WL, Upton SJ, Haynes TB. The life cycle of *Cryptosporidium baileyi* n.sp. (Apicomplexa, Cryptosporidiidae) infecting chickens. *J Protozool* 1986; **33**: 289–96.
 48. Blagburn BL. Avian cryptosporidiosis. In: Angus KW, Blewett DA, eds. *Cryptosporidiosis*. Proceedings of the First International Workshop. Edinburgh: Moredun Research Institute, 1988: 27–42.
 49. O'Donoghue PJ. *Cryptosporidium* infections in man, birds and fish. *Austr Vet J* 1985; **62**: 253–8.
 50. Rush BA, Chapman PA, Ineson RW. *Cryptosporidium* and drinking water. *Lancet* 1987; ii: 632–3.
 51. Tillett HE, Thomas MEM. Monitoring infectious diseases using routine microbiology data I. Study of gastroenteritis in an urban area. *J Hyg* 1981; **86**: 49–69.
 52. Skirrow MB. A demographic survey of campylobacter, salmonella and shigella infections in England. *Epidemiol Infect* 1987; **99**: 647–57.
 53. Casemore DP. *Cryptosporidiosis*. *PHLS Microbiology Digest* 1987; **4**: 1–5.
 54. Pohjola-Stenroos S. Diagnostic and epidemiological aspects of *Cryptosporidium* infection, a protozoan infection of increasing veterinary public health importance. Academic dissertation. College of Veterinary Medicine, Helsinki, 1986.
 55. Palmer SR, Biffin A. *Cryptosporidiosis*. *PHLS Microbiology Digest* 1987; **4**: 6–7.
 56. Jokipii L, Pohjola S, Jokipii AM. *Cryptosporidiosis* associated with travelling and giardiasis. *Gastroenterol* 1985; **89**: 838–42.
 57. Atterholm I, Castor B, Norlin K. *Cryptosporidiosis* in southern Sweden. *Scand J Infect Dis* 1987; **19**: 231–4.
 58. Pohjola S, Jokipii AM, Jokipii L. Sporadic cryptosporidiosis in a rural population is asymptomatic and associated with contact to cattle. *Acta Vet Scand* 1986; **27**: 91–102.
 59. Thomson MA, Benson JWT, Wright PA. Two year study of cryptosporidium infection. *Arch Dis Child* 1987; **62**: 559–63.
 60. Wolfson JS, Richter JM, Waldron MA, Weber DJ, McCarthy DM, Hopkins CC. *Cryptosporidiosis* in immunocompetent patients. *New Eng J Med* 1985; **312**: 1278–82.
 61. Mata L. *Cryptosporidium* and other protozoa in diarrheal disease in less developed countries. *Ped Infect Dis (Suppl)* 1986; **5**: S117–S129.
 62. Hojlyng N, Molbak K, Jepsen S. *Cryptosporidium* spp., a frequent cause of diarrhoea in Liberian children. *J Clin Microbiol* 1986; **23**: 1109–13.
 63. Carstensen H, Hansen HL, Kristiansen HO, Gomme G. The epidemiology of cryptosporidiosis and other intestinal parasitoses in children in southern Guinea-Bissau. *Trans Roy Soc Trop Med Hyg* 1987; **81**: 860–4.
 64. Pape JW, Levine E, Beaulieu ME, Marshall F, Verdier R, Johnston WD. *Cryptosporidiosis* in Haitian children. *Am J Trop Med Hyg* 1987; **36**: 333–7.
 65. Baxby D, Hart CA. The incidence of cryptosporidiosis: a two-year prospective survey in a children's hospital. *J. Hyg* 1986; **96**: 107–11.
 66. Shepherd RC, Sinha GP, Reed CL, Russell FE. *Cryptosporidiosis* in the West of Scotland. *Scot Med J* 1989; **33**: 365–8.
 67. Corbett-Feeney G. *Cryptosporidium* among children with acute diarrhoea in the west of Ireland. *J Infect* 1987; **14**: 79–84.
 68. Cruz JR, Cano F, Caceres P, Chew F, Pareja G. Infection and diarrhea caused by *Cryptosporidium* sp. among Guatemalan infants. *J Clin Microbiol* 1988; **26**: 88–91.
 69. Smith G, van den Ende J. *Cryptosporidiosis* among black children in hospital in South Africa. *J Infect* 1986; **13**: 25–30.
 70. Mathan M, Venkatesan S, George R, Mathew M, Mathan VI. *Cryptosporidium* and diarrhoea in southern Indian children. *Lancet* 1985; ii: 1172–5.
 71. Lahdevirta J, Jokipii AM, Sammalkorpi K, Jokipii L. Perinatal infection with cryptosporidium and failure to thrive. *Lancet* 1987; i: 48–9.
 72. Dale BAS, Gordon G, Thomson R, Urquart R. Perinatal infection with cryptosporidium. *Lancet* 1987; i: 1042–3.
 73. Hamoudi AC, Qualman, SJ, Marcon MJ, et al. Do regional variations in prevalence of cryptosporidiosis occur? The central Ohio experience. *Am J Public Health* 1988; **78**: 273–5.

74. Skeels MR, Sokolow R, Hubbard CV, Foster LR. Screening for co-infection with *Cryptosporidium* and *Giardia* in Oregon public health clinics. *Am J Public Health* 1988; **78**: 270–3.
75. Kern W, Mayer S, Kreuzer P, Vanek E. Low prevalence of intestinal cryptosporidiosis among immunocompetent and immunocompromised patients with and without diarrhoea in southern Germany. *Infection* 1987; **15**: 440–2.
76. Marshall AR, Al-Jumaili IJ, Fenwick GA, Bint AJ, Record CO. Cryptosporidiosis in patients at a large teaching hospital. *J Clin Microbiol* 1987; **25**: 172–3.
77. Nachamkin I, Jones A, Hasyn H. Routine parasitological examination for *Cryptosporidium*. *J Infect Dis* 1986; **154**: 369–70.
78. Baron EJ, Schenone C, Tanenbaum B. Comparison of three methods for detection of *Cryptosporidium* oocysts in a low-prevalence population. *J Clin Microbiol* 1989; **27**: 223–4.
79. Bissenden JG. Cryptosporidium and diarrhoea. *Br Med J* 1986; **293**: 287–8.
80. Waghorn DJ, Hinkins R. Screening for cryptosporidial infection. *J Clin Pathol* 1986; **39**: 1363.
81. Tzipori S. Cryptosporidium and routine parasitological diagnosis. *J Infect Dis* 1987; **156**: 248.
82. Jackson FB, Casemore DP. Cryptosporidium and diarrhoea. *Br Med J* 1986; **293**: 625–6.
83. Freidank, H, Kist M. Cryptosporidia in immunocompetent patients with gastroenteritis. *Europ J Clin Microbiol* 1986; **6**: 56–9.
84. Holley HP, Dover C. *Cryptosporidium*: a common cause of parasitic diarrhea in otherwise healthy individuals. *J Infect Dis* 1986; **153**: 365–8.
85. Rahman ASMH, Sanyal SC, Al-Mahmud KA, Sobhan A. *Cryptosporidium* diarrhoea in calves and their handlers in Bangladesh. *Ind J Med Res* 1985; **82**: 510–6.
86. Mann ED, Sekla LH, Nayer GPS, Koschik C. Infection with *Cryptosporidium* spp. in humans and cattle in Manitoba. *Canad J Vet Res* 1986; **50**: 174–8.
87. Nguyen XM. Cryptosporidial diarrhoea in children. *Infection* 1987; **15**: 444–6.
88. Casemore DP, Jessop EG, Douce D, Jackson FB. *Cryptosporidium* plus campylobacter: an outbreak in a semi-rural population. *J Hyg* 1986; **96**: 95–105.
89. Chermette R, Boufassa-Ouzrout S. Cryptosporidiosis: a cosmopolitan disease in animals and man, 2nd edition, Technical Series No. 5. Office International des Epizooties, Paris, 1988.
90. Casemore DP. Bottle-fed lambs as a source of human cryptosporidiosis. *J Infect* 1989; **19**: 101–4.
91. Casemore DP. Cryptosporidiosis: another source. *Brit Med J* 1989; **298**: 750–1.
92. Casemore DP. Educational farm visits and associated infection hazards. Communicable Disease Report 1989; 89/19: 3. PHLS Communicable Disease Surveillance centre, Public Health Laboratory Service, London.
93. Koch KL, Shankey V, Weinstein GS, et al. Cryptosporidiosis in a patient with hemophilia, common variable hypogammaglobulinemia, and the Acquired Immunodeficiency Syndrome. *Ann Intern Med* 1983; **99**: 337–40.
94. Lewis IJ, Hart CA, Baxby D. Diarrhoea due to *Cryptosporidium* in acute lymphoblastic leukaemia. *Arch Dis Child* 1985; **60**: 60–2.
95. Pohjola S, Oksanen H, Jokipii L, Jokipii AMM. Outbreak of cryptosporidiosis among veterinary students. *Scand J Infect Dis* 1986; **18**: 173–8.
96. Hojlyng N, Holten-Andersen W, Jepsen S. Cryptosporidiosis: a case of airborne transmission. *Lancet* 1987; **ii**: 271–2.
97. Blagburn BL, Current WL. Accidental infection of a researcher with human *Cryptosporidium*. *J Infect Dis* 1983; **148**: 772–3.
98. Levine JF, Levy MG, Walker RL, Crittenden S. Cryptosporidiosis in veterinary students. *J Am Vet Med Assoc*. 1988; **193**: 1413–4.
99. Baxby D, Hart CA, Blundell N. Shedding of oocysts by immunocompetent individuals with cryptosporidiosis. *J Hyg* 1985; **95**: 703–9.
100. Galbraith NS, Barrett NJ, Sockett PN. The changing pattern of food-borne disease in England and Wales. *Publ Hlth* 1987; **101**: 319–28.
101. Nichols G, Thom BT. Food poisoning caused by *Cryptosporidium*: a load of tripe. PHLS Communicable Disease Surveillance Centre, London, 1985; (unpublished report CDR 85/17:3).

102. Barrett NJ. Communicable disease associated with milk and dairy products in England and Wales: 1983–1984. *J Infect* 1986; **12**: 265–72.
103. Kraft JC. *Giardia* and giardiasis in childhood. *Pediatr Infect Dis* 1982; **1**: 196–211.
104. Jokipii AMM, Hemila M, Jokipii L. Prospective study of acquisition of *Cryptosporidium*, *Giardia lamblia*, and gastrointestinal illness. *Lancet* 1985; ii: 487–9.
105. Isaac-Renton JL, Fogel D, Stibbs HH, Ongerth JE. *Giardia* and *Cryptosporidium* in drinking water. *Lancet* 1987; i: 973–4.
106. Jephcott AE, Begg NT, Baker IA. Outbreak of giardiasis associated with mains water in the United Kingdom. *Lancet* 1986; i: 730–2.
107. Stetzenbach LD, Arrowood MJ, Marshall MM, Sterling CR. Monoclonal antibody based immunofluorescent assay for *Giardia* and *Cryptosporidium* detection in water samples. *Wat Sci Tech* 1988; **20**: 193–8.
108. Rose JB, Darbin H, Gerba CP. Correlations of the protozoa *Cryptosporidium* and *Giardia*, with water quality variables in a watershed. *Wat Sci Tech* 1988; **20**: 271–6.
109. Rose JB, Kayed D, Madore MS, et al. Methods for the recovery of *Giardia* and *Cryptosporidium* from environmental waters and their comparative occurrence. In: Wallis PM, Hammond BR, eds. *Advances in Giardia research*. Calgary: University of Calgary Press, 1988: 205–9.
110. Smith HV, Girdwood RWA, Patterson WJ, et al. Waterborne outbreak of cryptosporidiosis. *Lancet* 1988; ii: 1484.
111. Smith HV, Patterson WJ, Hardie R, et al. An outbreak of waterborne cryptosporidiosis caused by post-treatment contamination. *Epidemiol Infect* 1989. In press.
112. Chapman PA, Rush BA. The use of methods based on a monoclonal antibody to investigate the epidemiology of cryptosporidiosis. *PHLS DMRQC Newsletter*, Issue 2, 1987: 1–4. Public Health Laboratory Service, London.
113. Rose JB, Cifrino A, Madore MS, et al. Detection of *Cryptosporidium* from wastewater and freshwater environments. *Wat Sci Tech* 1987; **18**: 233–9.
114. Madore MS, Rose JB, Gerba CP, Arrowood MJ, Sterling CR. Occurrence of *Cryptosporidium* oocysts in sewage effluents and selected surface waters. *J Parasitol* 1987; **73**: 702–5.
115. Ongerth JE, Stibbs HH. Identification of *Cryptosporidium* oocysts in river water. *Appl Env Microbiol* 1987; **53**: 672–6.
116. Musial CE, Arrowood MJ, Sterling CR, Gerba CP. Detection of *Cryptosporidium* in water by using polypropylene cartridge filters. *Appl Env Microbiol* 1987; **53**: 687–92.
117. Rose JB. Occurrence and significance of cryptosporidium in water. *JAWWA* 1988; **80**: 53–8.
118. D'Antonio RG, Winn RE, Taylor JP, et al. A waterborne outbreak of cryptosporidiosis in normal hosts. *Ann Intern Med* 1985; **103**: 886–8.
119. Anon. Cryptosporidiosis – New Mexico, 1986. *Morbid Mortal Weekly Rep* 1987; **36**: 561–3.
120. Gallaher MM, Herndon JL, Nims LJ, Sterling CR, Grabowski DJ, Hull HF. Cryptosporidiosis and surface water. *AJPH* 1989; **79**: 39–42.
121. Anon (Roundtable). *Cryptosporidium*. *JAWWA* 1988; **80**: 14–27.
122. Hayes EB, Matte TD, O'Brien TR, et al. Large community outbreak of cryptosporidiosis due to contamination of a filtered public water supply. *New Eng J Med* 1989; **320**: 1372–6.
123. Galbraith NS, Barrett NJ, Stanwell-Smith. Water and Disease after Croyden: A review of water-borne and water-associated disease in the UK 1937–86. *J Inst Water Env Manag* 1987; **1**: 7–21.
124. Brown EAE, Casemore DP, Gerken A, Greatorex I. Cryptosporidiosis in Great Yarmouth. *Publ Hlth* 1989; **103**: 3–9.
125. Dick TA. Report of enquiry into water supplies in Oxford and Swindon following an outbreak of cryptosporidiosis during February–March 1989. Thames Water, London, 1989.
126. Badenoch J. Progress report on the work of the DoE group of experts on cryptosporidium in water supplies. Department of the Environment, London, 1989.
127. Anon. Troubled waters. *Lancet* 1989; ii: 251–2.
128. Mayon-White RT, Frankenberg RA. 'Boil the water'. *Lancet* 1989; ii: 216.
129. Frankland P, Frankland Mrs P. *Micro-organisms in water. Their significance, identification and removal*. London: Longmans, 1894.

130. Anon. Mr Ridley's sewers. (Leading Article). *Lancet* 1988; ii: 1463-4.
131. Olson BH. The safety of our drinking water. Reason for concern but not alarm. *New Eng J Med* 1989; **320**: 1413-4.
132. Pavlasek I. Effect of disinfectants in infectiousness of oocysts of *Cryptosporidium* sp. *Cs Epidem* 1984; **33**: 97-101.
133. Blewett DA. Disinfection and oocysts. In: Angus KW, Blewett DA, eds. *Cryptosporidiosis. Proceedings of the First International Workshop*. Edinburgh: Moredun Research Institute, 1988: 107-15.
134. Casemore DP, Blewett DA, Wright SE. Cleaning and disinfection of equipment for flexible endoscopy. *Gut* 1989; **30**: 1156-7.
135. Smith HV, Smith AL, Girdwood RWA, Carrington EG. The effect of free chlorine on the viability of *Cryptosporidium* spp oocysts. *WRc Publ PRU 2023-M*. Medmenham. Bucks: Water Research Centre, 1988.
136. Galbraith NS. Cryptosporidiosis: another source. *Br Med J* 1989; **298**: 276-7.
137. Smith HV, Parker JFW, Girdwood RWA. A modified method for the detection of *Cryptosporidium* spp. oocysts in water-related samples. *Communicable Disease, Scotland* 1989; 89/15: 7-13.
138. Stibbs HH, Ongerth JE. Immunofluorescence detection of *Cryptosporidium* oocysts in fecal smears. *J Clin Microbiol* 1986; **24**: 517-21.
139. Sterling CR, Arrowood MJ. Detection of *Cryptosporidium* sp. infections using a direct immunofluorescent assay. *Pediatr Infect Dis* 1986; **5**: (Suppl) S139-S142.
140. Arrowood MJ, Sterling CR. Comparison of conventional staining methods and monoclonal antibody-based methods for *Cryptosporidium* oocyst detection. *J Clin Microbiol* 1989; **27**: 1490-5.
141. McLauchlin J, Casemore DP, Harrison TG et al. Identification of cryptosporidium oocysts by monoclonal antibody. *Lancet* 1987; i: 51.
142. Garcia LS, Brewer TC, Bruckner DA. Fluorescence detection of *Cryptosporidium* oocysts in human fecal specimens by using monoclonal antibodies. *J Clin Microbiol* 1987; **25**: 119-21.
143. Pohjola S, Neuvonen E, Niskanen A, Rantama A. Rapid immunoassay for detection of cryptosporidium oocysts. *Acta Vet Scand* 1986; **27**: 71-9.
144. Heijbel H, Slaine K, Seigal B, et al. Outbreak of diarrhea in a day-care center with spread to household members: the role of *Cryptosporidium*. *Pediatr Infect Dis J* 1987; **6**: 532-5.
145. Hannah J, Riorden T. Case to case spread of cryptosporidiosis; Evidence from a day nursery outbreak. *Publ Hlth* 1988; **102**: 539-44.
146. Ribeiro CD, Palmer SR. Family outbreak of cryptosporidiosis. *Brit Med J* 1986; **292**: 377.
147. Isaacs D, Hunt GH, Phillips AD, et al. Cryptosporidiosis in immunocompetent children. *J Clin Pathol* 1985; **38**: 76-81.
148. Biggs BA, Megna R, Wickremesinghe S, Dwyer B. Human infection with *Cryptosporidium* spp.: results of a 24-month survey. *Med J Austr* 1987; **147**: 175-7.
149. Taylor JP, Perdue JN, Dingley D, et al. Cryptosporidiosis outbreak in a day-care center *Am J Dis Child* 1985; **139**: 1023-5.
150. Combee CL, Collinge ML, Britt EM. Cryptosporidiosis in a hospital-associated day-care center. *Pediatr Infect Dis* 1986; **5**: 528-32.
151. Alpert G, Bell LM, Kirkpatrick CE. Outbreak of cryptosporidiosis in a day-care center. *Pediatr* 1986; **77**: 152-7.
152. Melo Cristino JAG, Carvalho MIP, Salgado MJ. An outbreak of cryptosporidiosis in a hospital day-care centre. *Epidemiol Infect* 1988; **101**: 355-9.
153. Nichols G. Cryptosporidiosis during an outbreak of *Shigella sonnei* dysentery. *Communicable Diseases Surveillance Centre, London*. 1986 (unpublished report. CDR 86/08:3-4).
154. Hunt DA, Shannon R, Palmer SR, Jephcott AE. Cryptosporidiosis in an urban community. *Br Med J* 1984; **289**: 814-6.
155. Baxby D, Hart CA, Taylor C. Human cryptosporidiosis: a possible case of hospital cross infection. *Br Med J* 1983; **287**: 1760-1.
156. Koch KL, Phillips DJ, Aber RC, Current WL. Cryptosporidiosis in hospital personnel. *Ann Int Med* 1985; **102**: 593-6.

157. Dryjanski J, Gold JWM, Ritchie MT, et al. Cryptosporidiosis. Case report in a health team worker. *Am J Med* 1986; **80**: 751–2.
158. Roberts W, Carr MF, Ma J, Ginsburgh A, Green PHR. Prevalence of cryptosporidium in patients undergoing endoscopy – evidence for an asymptomatic carrier state. *Gastroenterol* 1987; **92**: 1597.
159. Soave R. Clinical cryptosporidiosis in man. In: Angus KW, Blewett DA, eds. *Cryptosporidiosis. Proceedings of the First International Workshop*. Edinburgh: Moredun Research Institute, 1988: 19–26.
160. Anonymous. Cleaning and disinfection of equipment for gastrointestinal flexible endoscopy: interim recommendations of a working party of the British Society of Gastroenterology. *Gut* 1988; **29**: 1134–51.
161. Soave R, Danner RL, Honig CL, et al. Cryptosporidiosis in homosexual men. *Ann Int Med* 1984; **100**: 504–11.
162. Soave R, Ma P. Cryptosporidiosis. Traveler's diarrhea in two families. *Arch Int Med* 1985; **145**: 70–2.
163. Ma P, Kauffman DL, Helmick CG, D'Souza AJ, Navin TR. Cryptosporidiosis in tourists returning from the Caribbean. *New Eng J Med* 1985; **312**: 647–8.
164. Sterling C, Seegar K, Sinclair NA. *Cryptosporidium* as a causative agent of traveler's diarrhea. *J Inf Dis* 1986; **153**: 380–1.
165. Ericsson CD, DuPont HL. Travelers' diarrhea: recent developments. In: Remington JS, Swartz MM, eds. *Current clinical topics in infectious diseases*. New York: McGraw Hill, 1985: 66–84.
166. Malla N, Sehgal R, Ganguly NK, Mahajan RC. Cryptosporidiosis in children in Chandrigarh. *Ind J Med Res* 1987 **86**: 722–5.
167. Cooke EM. *Escherichia coli* and man. Edinburgh: Churchill Livingstone, 1974.
168. Taylor DN, Echeverria P. When does cryptosporidium cause diarrhoea. *Lancet* 1986; **i**: 320.
169. Sallon S, Deckelbaum RJ, Schmid II, et al. *Cryptosporidium*, malnutrition, and chronic diarrhea in children. *Am J Dis Child* 1988; **142**: 312–5.
170. MacFarlane DE, Horner-Bryce J. Cryptosporidiosis in well nourished and malnourished children. *Acta Pediatr Scand* 1987; **76**: 474–7.
171. Weitz JC, Tassara R, Mercado TMR, et al. Cryptosporidiosis in children of a nutritional care centre. *Rev Chil Pediatr* 1987; **58**: 50–3.
172. Blewett DA. Quantitative studies in *Cryptosporidium* research. In: Angus KW, Blewett DA, eds. *Cryptosporidiosis. Proceedings of the First International Workshop*. Edinburgh: Moredun Research Institute, 1988: 85–95.
173. Henriksen SA. Epidemiology of cryptosporidiosis in calves. In: Angus KW, Blewett DA, eds. *Cryptosporidiosis. Proceedings of the First International Workshop*. Edinburgh: Moredun Research Institute, 1988: 79–83.
174. Jokipii L, Jokipii AMM. Timing of symptoms and oocyst excretion in human cryptosporidiosis. *New Eng J Med* 1986; **315**: 1643–7.
175. Stehr-Green JK, McCaig L, Remsen HM, Rains CS, Fox M, Juranek DD. Shedding of oocysts in immunocompetent individuals infected with *Cryptosporidium*. *Am J Trop Med* 1987; **36**: 338–42.
176. Shepherd RC, Reed CL, Sinha GP. Shedding of oocysts of *Cryptosporidium* in immunocompetent patients. *J Clin Pathol* 1988; **41**: 1104–6.
177. Casemore DP. Timing of symptoms and oocyst excretion in human cryptosporidiosis. *New Eng J Med* 1987; **317**: 168–9.
178. Garcia LS, Brewer TC, Bruckner DA. Incidence of *Cryptosporidium* in all patients submitting stool specimens for ova and parasite examination: Monoclonal antibody IFA method. *Diagn Microbiol Infect Dis* 1989; **11**: 25–7.
179. Baxby D, Blundell N, Hart CA. Excretion of atypical oocysts by patients with cryptosporidiosis. *Lancet* 1987; **i**: 974.
180. Baxby D, Blundell N. Recognition and laboratory characteristics of an atypical oocyst of *Cryptosporidium*. *J Infect Dis* 1988; **158**: 1038–45.
181. Zar F, Geiseler PG, Brown VA. Asymptomatic carriage of cryptosporidium in the stool of a patient with acquired immunodeficiency syndrome. *J Infect Dis* 1985; **151**: 195.

182. Scaglia M, Senaldi G, Di Perri G, Minoli L. Unusual low-grade cryptosporidial enteritis in AIDS: a case report. *Infection* 1986; **14**: 87–8.
183. Miller RA, Bronson MA, Morton WR. Determination of the infectious dose of *Cryptosporidium* and the influence of inoculum size on disease severity. *A S M Abstracts of Annual Meeting* 1986; p 49.
184. Ernest JA, Blagburn BL, Lindsay DS. Infection dynamics of *Cryptosporidium parvum* (Apicomplexa: Cryptosporidiidae) in neonatal mice (*Mus musculus*). *J Parasitol* 1986; **72**: 796–8.
185. Sherwood D, Angus KW, Snodgrass DR, Tzipori S. Experimental cryptosporidiosis in laboratory mice. *Infect Immun* 1982; **38**: 471–5.
186. Anderson BC. Moist heat inactivation of *Cryptosporidium* sp. *AJPH* 1985; **75**: 1433–4.
187. Anderson BC. Effect of drying on the infectivity of cryptosporidia-laden calf feces for 3- to 7-day-old mice. *Am J Vet Res* 1986; **47**: 2272–3.
188. Peeters JE, Mazas EA, Masschelein WJ, de Maturana IVM, Debacker E. Effect of disinfection of drinking water with ozone or chlorine dioxide on survival of *Cryptosporidium parvum* oocysts. *Appl Env Microbiol* 1989; **55**: 1519–22.
189. Upton SJ, Tilley ME, Marchin GL, Fina LR. Efficacy of a pentaiodide resin on *Cryptosporidium parvum* (Apicomplexa: Cryptosporidiidae) oocysts *in vitro*. *J Parasitol* 1988; **74**: 719–21.
190. Tzipori S, Campbell I. Prevalence of *Cryptosporidium* antibodies in 10 animal species. *J Clin Microbiol* 1981; **14**: 455–6.
191. Campbell PN, Current WL. Demonstration of serum antibodies to *Cryptosporidium* sp. in normal and immunodeficient humans with confirmed infection. *J Clin Microbiol* 1983; **18**: 165–9.
192. Ungar BLP, Soave R, Fayer R, Nash TE. Enzyme immunoassay detection of immunoglobulin M and G antibodies to *Cryptosporidium* in immunocompetent and immunocompromised persons. *J Infect Dis* 1986; **153**: 570–8.
193. Ungar BLP, Gilman RH, Lanata CF, Perez-Schael I. Seroepidemiology of *Cryptosporidium* infection in two Latin American populations. *J Infect Dis* 1988; **157**: 551–6.
194. Ungar BLP, Nash TE. Quantification of specific antibody response to *Cryptosporidium* antigens by laser densitometry. *Infect Immun* 1986; **53**: 124–8.
195. Hill BD. Immune responses in *Cryptosporidium* infections. In: Angus KW, Blewett DA, eds. *Cryptosporidiosis. Proceedings of the First International Workshop*. Edinburgh: Moredun Research Institute, 1988: 97–105.
196. Ungar BLP, Mulligan M, Nutman TB. Serologic evidence of *Cryptosporidium* infection in US volunteers before and during Peace Corps service in Africa. *Arch Intern Med* 1989; **149**: 894–7.
197. Luft BJ, Payne D, Woodmansee D, Kim CW. Characterization of the *Cryptosporidium* antigens from sporulated oocysts of *Cryptosporidium parvum*. *Infect Immun* 1987; **55**: 2436–41.
198. Lazo A, Barriga OO, Redman DR, Bech-Nielsen S. Identification by transfer blot of antigens reactive in the enzyme-linked immunosorbent assay (ELISA) in rabbits immunized and a calf infected with *Cryptosporidium*. *Vet Parasitol* 1986; **21**: 151–63.
199. Mead JR, Arrowood MJ, Current WL, Sterling CR. Field inversion gel electrophoretic separation of *Cryptosporidium* spp. chromosome-sized DNA. *J Parasitol* 1988; **74**: 366–9.
200. Oxford JS. Biochemical techniques for the genetic and phenotypic analysis of viruses: 'Molecular epidemiology'. *J Hyg* 1985; **94**: 1–7.
201. Anon. On three stages of amoebic research. *Lancet* 1986; ii: 1133–4.
202. Bell JC, Palmer SR. Control of zoonoses in Britain: past, present, and future. *Br Med J* 1983; **287**: 591–3.
203. Connolly GM, Dryden MS, Shanson DC, Gazzard BG. Cryptosporidial diarrhoea in AIDS and its treatment. *Gut* 1988; **29**: 593–7.