

## Corrigendum

# The cooperative breeding perspective helps in pinning down when uniquely human evolutionary processes are necessary—CORRIGENDUM

Judith Maria Burkart and Carel P. van Schaik

doi:10.1017/S0140525X15000072, Published online by Cambridge University Press, 9 March 2016.

Figure 1B in Burkart and van Schaik's (2016) commentary on the target article by Richerson et al. (2016) is a duplicate of Figure 1A. The correct [Figures 1A and 1B](#) appear below. The commentary appears on pages 22 and 23 of the treatment.

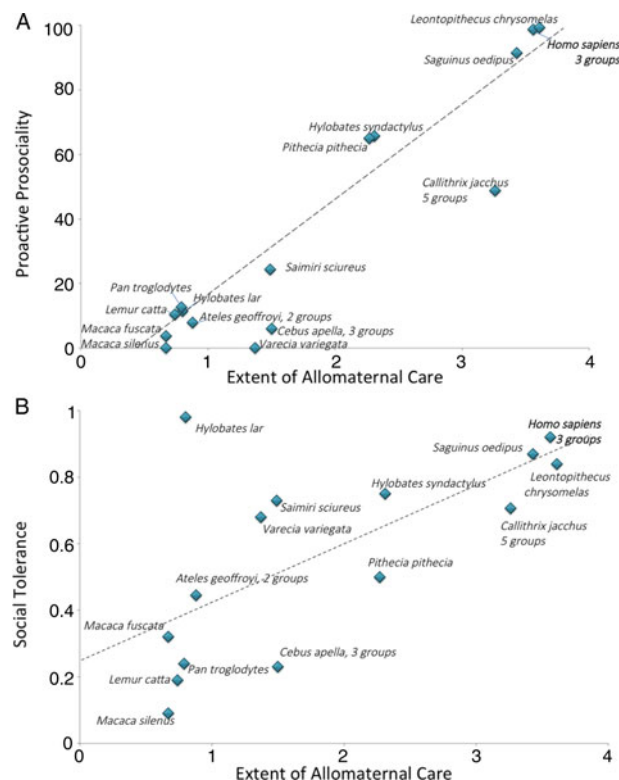


Figure 1 (Burkart & Van Schaik). The relationship between allomaternal care and (A) proactive prosociality and (B) social tolerance. Humans fit the general primate trend and do not represent an outlier.

## References

- Burkart, J. M. & van Schaik, C. P. (2016) The cooperative breeding perspective helps in pinning down when uniquely human evolutionary processes are necessary. *Behavioral and Brain Sciences* 39:e34. doi:10.1017/S0140525X15000072.
- Richerson, P., Baldini, R., Bell, A. V., Demps, K., Frost, K., Hillis, V., Mathew, S., Newton, E. K., Naar, N., Newson, L., Ross, C., Smaldino, P. E., Waring, T. M. & Zefferman, M. (2016) Cultural group selection plays an essential role in explaining human cooperation: A sketch of the evidence. *Behavioral and Brain Sciences* 39:e30.