

Vol. VII

Nos. 2 & 3

O R Y X



THE JOURNAL OF  
THE FAUNA PRESERVATION SOCIETY

August, 1963

Price £1

# THE FAUNA PRESERVATION SOCIETY

## *Patron :*

HER MAJESTY THE QUEEN

## *President :*

THE MARQUESS OF WILLINGDON

## *Vice-Presidents :*

SYED W. AMEER ALI, C.I.E.

PROFESSOR J. G. BAER (I.U.C.N.)

THE LORD HURCOMB, G.C.B., K.B.E.

SIR JULIAN HUXLEY, F.R.S.

H.H. THE MAHARAJAH OF MYSORE, G.C.B., G.C.S.I. (India)

MR. FAIRFIELD OSBORN, Sc.D., LL.D. (U.S.A.)

CAPTAIN C. R. S. PITMAN, C.B.E., D.S.O., M.C.

DR. V. VAN STRAELEN, F.M.L.S., Z.S., G.S. (Belgium)

SIR LANDSBOROUGH THOMSON, C.B., D.Sc.

PROFESSOR SIR SOLLY ZUCKERMAN, C.B., D.Sc., F.R.S.

## *Hon. Treasurer :*

IAN D. MALCOLMSON, Esq.

## *Secretary and Editor of Oryx :*

LT.-COL. C. L. BOYLE, O.B.E.

## *Assistant Secretary :*

MISS KATHLEEN CLARKE

## *Council :*

*Chairman :* THE MARQUESS OF WILLINGDON

F. FRASER DARLING, Esq., D.Sc.,  
Ph.D., F.R.S.E.

SIR HUGH ELLIOTT, BART., O.B.E.

JAMES FISHER, Esq., M.A.

R. S. R. FITTER, Esq.

LT.-COL. G. A. E. GIBBS.

MAJOR C. W. HUME, O.B.E., M.C.

DAVID JAMES, Esq., D.S.C., M.B.E.,  
M.P.

I. D. MALCOLMSON, Esq.

LT.-COL. P. G. MOLLOY, M.C.

T. C. S. MORRISON-SCOTT, Esq., D.S.C.,  
D.Sc.

GUY MOUNTFORT, Esq.

D. R. ROSEVEAR, Esq., C.B.E.

P. M. SCOTT, Esq., C.B.E., D.S.C.

E. O. SHEBBEARE, Esq.

MRS. DIANA SPEARMAN.

E. H. TONG, Esq., F.L.A.S.

## *Offices :*

c/o Zoological Society of London, Regent's Park, London, N.W. 1

## *Telephone Number :*

JUNiper 0872

## *Subscriptions :*

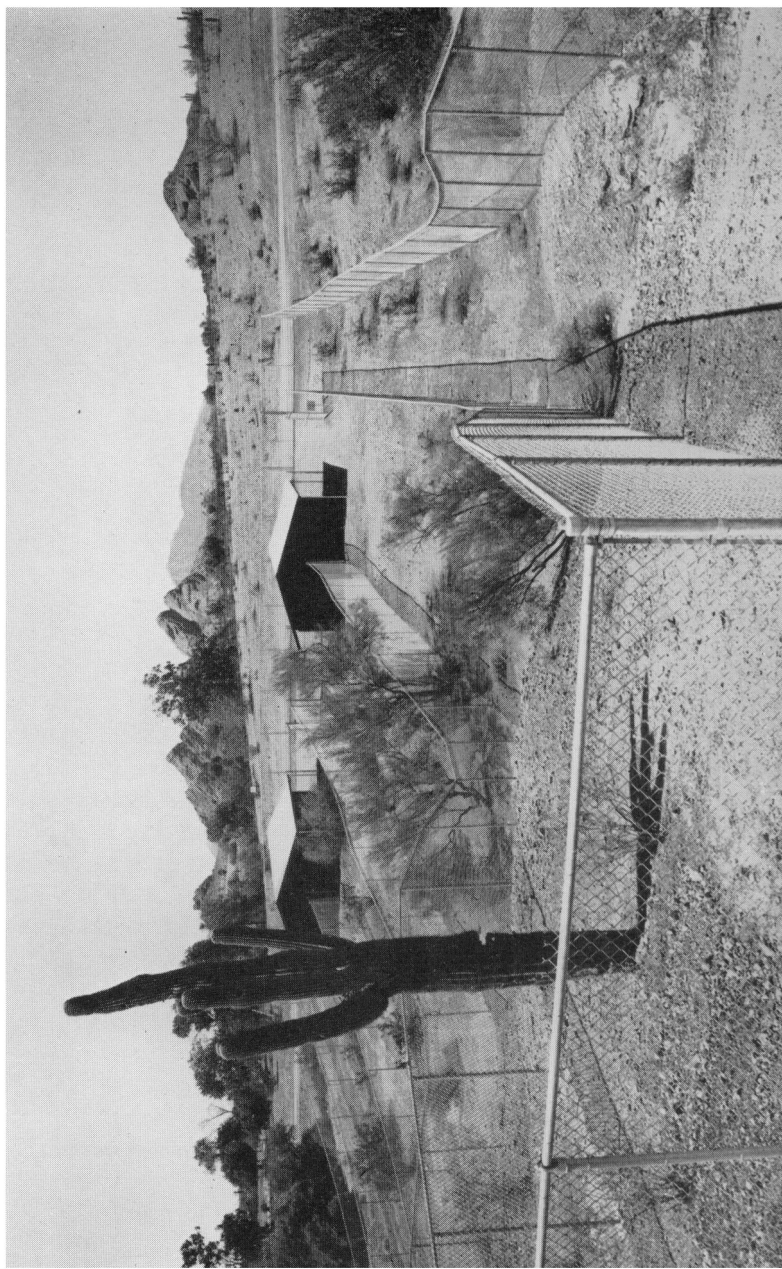
Annual Subscription : £2.	Life membership : Age under 41	£40
	„ 41-60	£30
	„ 61 and over	£20

## *Bankers :*

BARCLAYS BANK, LTD., Camden Town, London, N.W. 1

NOTICE.—This Society accepts no responsibility for opinions expressed in articles.

August 1963



*Frontispiece*

*Photo : Larry Mishler.*

**PENS FOR THE ARABIAN ORYX AT THE PHOENIX MAYTAG ZOO**

# CONTENTS

	PAGE
EDITORIAL NOTES . . . . .	57
REPORT ON A BRIEF SURVEY OF THE WILD LIFE RESOURCES OF NEPAL, INCLUDING THE RHINOCEROS. <i>By E. P. Gee</i> . . . . .	67
WILD LIFE RESEARCH IN EAST AND CENTRAL AFRICA. <i>By P. A. Jewell</i> . . . . .	77
THE TRADE IN WILD LIFE, LICENSING SYSTEMS. <i>By C. L. Boyle</i> . . . . .	88
THE STATUS OF MANATEES IN THE GUIANAS. <i>By G. C. L. Bertram and C. K. Ricardo Bertram</i> . . . . .	90
NEWS OF THE EUROPEAN BISON IN POLAND. <i>From Professor Kazimierz Krysiak</i> . . . . .	94
MAN PRESSURE. <i>By Colin Bertram</i> . . . . .	97
MOREMI WILDLIFE RESERVE, OKAVANGO. <i>By June Kay</i> . . . . .	102
THE ORANG-UTAN CRISIS . . . . .	106
THE EDUCATION OF YOUNG ORANG-UTANS TO LIVING IN THE WILD. <i>By Barbara Harrison</i> . . . . .	108
BIRDS OF THE BOREENS. <i>By H. M. Dobinson</i> . . . . .	128
REVIEWS . . . . .	132
SHORTER NOTICES . . . . .	139
THE SOCIETY'S BUSINESS . . . . .	140

## MAPS

	<i>Between pages</i>
1. THE RHINOCEROS AREA OF NEPAL . . . . .	70-71
2. AIRFIELDS, RIVERS, PROPOSED PARKS AND SANCTUARIES OF NEPAL . . . . .	70-71
3. BAKO NATIONAL PARK, SARAWAK . . . . .	110

## ILLUSTRATIONS

PENS FOR THE ARABIAN ORYX AT THE PHOENIX MAYTAG ZOO . . . . .	<i>Frontispiece</i>
THE ARRIVAL OF TOMATUM . . . . .	62-63
TOMATUM AT THE PHOENIX MAYTAG ZOO . . . . .	62-63
"THIS IS THE DOG THAT BIT THE CAT THAT KILLED THE RAT THAT ATE THE MALT THAT CAME FROM THE GRAIN THAT JACK SPRAYED." <i>Reproduced by permission of "Punch"</i> . . . . .	64
THE AUTHOR WITH CIRCLE CONSERVATOR G. N. RAYAMAJHI EXPLAINING THE PROBLEMS OF BURNING TO A SUBEDAR AND TWO RHINO GUARDS IN THE REU VALLEY . . . . .	70-71
RHINO IN NEPAL REMAIN HIDDEN IN THICK COVER DURING DAYTIME, AND ARE USUALLY NOT FOUND IN THE OPEN . . . . .	70-71
RHINO IN KAZIRANGA SANCTUARY IN ASSAM HAVE BECOME ACCUSTOMED TO HUMAN VISITORS . . . . .	70-71
A SUBEDAR AND TWO OF THE RHINO GUARDS . . . . .	74-75
THE GORGE OF THE KARNALI RIVER . . . . .	74-75
A <i>Mahseer</i> OF ABOUT 30-40 LB. CAUGHT ON HOME-MADE TACKLE IN THE KARNALI RIVER . . . . .	74-75
BULL ELEPHANT, LUANGWA VALLEY, OCTOBER, 1962 . . . . .	78-79
LUANGWA VALLEY, NORTHERN RHODESIA . . . . .	78-79
CYNTHIA (PHASE I) . . . . .	110-111
ARTHUR (PHASE I) . . . . .	110-111
ARTHUR (PHASE III) . . . . .	118-119
GEORGE AT TWENTY MONTHS OLD . . . . .	118-119
THE RUFFED LEMUR . . . . .	142