

*Gaps in your scientific
knowledge?*

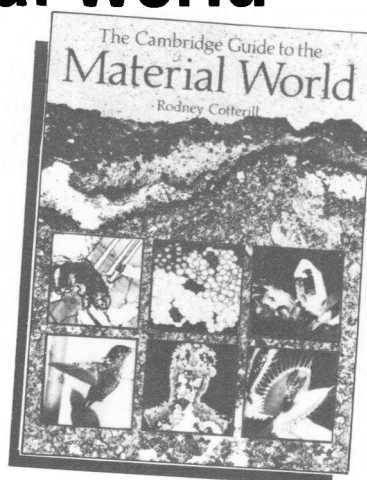
bring yourself up-to-date with

The Cambridge Guide to the Material World

RODNEY COTTERILL

Rodney Cotterill's *The Cambridge Guide to the Material World* provides a unique single-volume introduction to the materials found on this planet, both organic and inorganic.

The opening sections are devoted to such fundamental topics as the nature of the atom, the structure of molecules and the common states of matter. There then follow chapters on specific classes of material, notably ceramics, glasses, metals, conductors and insulators, liquid crystals, and natural and synthetic polymers. Minerals, water and the living cell are considered in detail and the book concludes with a characteristically lucid discussion of the molecular structure of plant and animal life. Each chapter is packed with fascinating examples and analogies, and closes with a useful summary of what has gone before.



- ★ Numerous full colour photographs and illustrations
- ★ Text and illustrations carefully integrated to ensure maximum clarity and readability
- ★ Topics requiring special attention prominently highlighted in display panels

297 x 210 mm 352 pp. 190 illustrations including 90 in full colour and 30 in two colours
0 521 24640 7

£17.50 net

CAMBRIDGE UNIVERSITY PRESS
The Edinburgh Building, Shaftesbury Road, Cambridge CB2 2RU, England

(i)

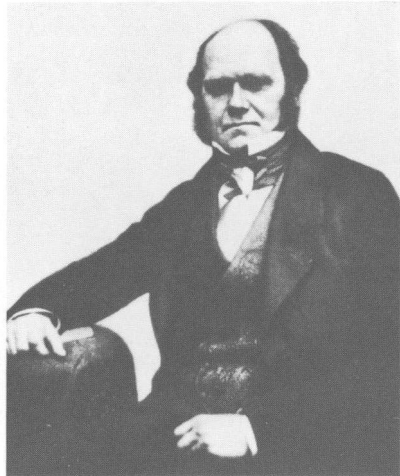
CAMBRIDGE

Announces a Major New Project

The Correspondence of Charles Darwin

Edited by **FREDERICK BURKHARDT** and **SYDNEY SMITH**

Cambridge University Press is proud to announce the first complete edition of the correspondence of Charles Darwin (1809–1882). The series provides an extensive record of Darwin's thoughts and investigations, and will offer an unusually intimate and deep insight into Darwin's mind. In addition it gives an illuminating account of natural science in the nineteenth century.



Features include:

- ★ the full text of every manuscript
- ★ both sides of the correspondence
- ★ Darwin's annotations on letters received
- ★ alterations made whilst writing his own letters

The letters are edited in accordance with the principles and practice of modern textual criticism.

Volume 1: 1821–1836

The first volume begins with a letter received by the twelve-year old Darwin while a Shrewsbury schoolboy and ends with correspondence on the results of the Beagle voyage. The letters to Darwin, most of which are published for the first time, include all that have been preserved from his correspondence with friends and members of his family. However, the major correspondence in the volume, both in quantity and importance relates to the Beagle voyage. Darwin's letters are engagingly written, highly readable, and tell a remarkable story of self-discovery and preparation for a life dedicated to science.

0521255872

£30.00 net

Cambridge University Press

The Edinburgh Building, Shaftesbury Road, Cambridge CB2 2RU, England

(ii)

PARASITOLOGY

PARASITOLOGY

(*Founded by G. H. F. Nuttall, F.R.S.*)

EDITORS

F. E. G. COX *and* P. J. WHITFIELD

EDITORIAL ASSISTANT

M. ELISABETH PAINTER, Ph.D.

ADVISORY BOARD

L. G. GOODWIN, F.R.S. (*Chairman*)

R. ANDERSON

C. ARME

J. R. BAKER

J. BARRETT

A. E. BUTTERWORTH

ELIZABETH U. CANNING

L. H. CHAPPELL

S. COHEN, F.R.S.

D. W. T. CROMPTON

G. A. M. CROSS, F.R.S.

D. A. ERASMUS

N. A. EVANS

D. I. GIBSON

L. P. JOYNER*

C. R. KENNEDY

ANN M. LACKIE

D. L. LEE

J. LLEWELLYN

B. A. NEWTON

BRIDGET M. OGILVIE

M. ELAINE ROSE

J. F. RYLEY

S. R. SMITHERS

V. R. SOUTHGATE

K. VICKERMAN, F.R.S.

D. WAKELIN

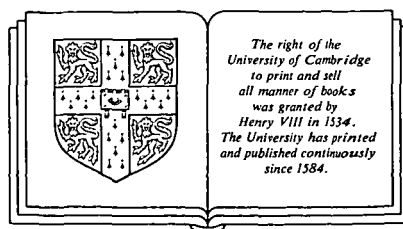
P. F. V. WARD

H. H. WILLIAMS

R. A. WILSON

* Representing the British Society for Parasitology.

VOLUME 91, 1985



CAMBRIDGE UNIVERSITY PRESS

CAMBRIDGE

LONDON

NEW YORK

NEW ROCHELLE

MELBOURNE

SYDNEY

Published by the Press Syndicate of the University of Cambridge
The Pitt Building, Trumpington Street, Cambridge CB2 1RP
32 East 57th Street, New York, NY 10022
10 Stamford Road, Oakleigh, Melbourne 3166, Australia

© Cambridge University Press, 1985

Printed in Great Britain by the
University Press, Cambridge

CONTENTS
(All rights reserved)

PART 1 AUGUST 1985

	PAGE
OKOT-KOTBER, B. M. A rapid chromatographic method for elimination of fungal contamination in <i>in vitro</i> cultures of <i>Leishmania</i> spp.	1
VAN ZON, A. A. J. C., ELING, W. M. C. and HERMSEN, C. C. Pregnancy-induced recrudescences strengthen malarial immunity in mice infected with <i>Plasmodium berghei</i>	9
JANSE, C. J., MONS, B., ROUWENHORST, R. J., VAN DER KLOOSTER, P. F. J., OVERDULVE, J. P. and VAN DER KAAY, H. J. <i>In vitro</i> formation of ookinetes and functional maturity of <i>Plasmodium berghei</i> gametocytes	19
BALL, S. J., PITTILO, R. M., NORTON, C. C. and JOYNER, L. P. Morphological effects of arprinocid on developmental stages of <i>Eimeria tenella</i> and <i>E. brunetti</i>	31
CATCHPOLE, JANET and GREGORY, M. W. Pathogenicity of the coccidium <i>Eimeria crandallii</i> in laboratory lambs	45
MURRAY, M., HIRUMI, H. and MOLOO, S. K. Suppression of <i>Trypanosoma congolense</i> , <i>T. vivax</i> and <i>T. brucei</i> infection rates in tsetse flies maintained on goats immunized with uncoated forms of trypanosomes grown <i>in vitro</i>	53
CONRAD, P. A., KELLY, B. G. and BROWN, C. G. D. Intraerythrocytic schizogony of <i>Theileria annulata</i>	67
PAYARES, G., MCLAREN, DIANE J., EVANS, W. H. and SMITHERS, S. R. Changes in the surface antigen profile of <i>Schistosoma mansoni</i> during maturation from cercaria to adult worm	83
MASTIN, AVIS, BICKLE, Q. D. and WILSON, R. A. An ultrastructural examination of irradiated, immunizing schistosomula of <i>Schistosoma mansoni</i> during their extended stay in the lungs	101
CRABTREE, JEAN E. and WILSON, R. A. <i>Schistosoma mansoni</i> : an ultrastructural examination of skin migration in the hamster cheek pouch	111
UGLEM, G. L., LEWIS, M. C. and LARSON, O. R. Niche segregation and sugar transport capacity of the tegument in digenean flukes	121
LAWSON, J. R. and GEMMELL, M. A. The potential role of blowflies in the transmission of taeniid tapeworm eggs	129
MUNIR, WIDAD A. and BARRETT, J. The metabolism of xenobiotic compounds by <i>Hymenolepis diminuta</i> (Cestoda: Cyclophyllidea)	145
OVINGTON, K. S. Dose-dependent relationships between <i>Nippostrongylus brasiliensis</i> populations and rat food intake	157
BIRD, A. F., JAGO, M. V. and COCKRUM, P. A. Corynetoxins and nematodes	169
KERBOEUF, DOMINIQUE. The effect of host density on the establishment and fecundity of <i>Heligmosomoides polygyrus</i>	177

- RIDDLE, D. L. and BIRD, A. F. Responses of the plant parasitic nematodes *Rotylenchulus reniformis*, *Anguina agrostis* and *Meloidogyne javanica* to chemical attractants 185

PART 2 OCTOBER 1985

- CHANNON, JACQUELINE Y. and BLACKWELL, JENEFER M. A study of the sensitivity of *Leishmania donovani* promastigotes and amastigotes to hydrogen peroxide. I. Differences in sensitivity correlate with parasite-mediated removal of hydrogen peroxide 197
- CHANNON, JACQUELINE Y. and BLACKWELL, JENEFER M. A study of the sensitivity of *Leishmania donovani* promastigotes and amastigotes to hydrogen peroxide. II. Possible mechanisms involved in protective H₂O₂ scavenging 207
- JANSE, C. J., ROUWENHORST, R. J., VAN DER KLOOSTER, P. F. J., VAN DER KAAJ, H. J. and OVERDULVE, J. P. Development of *Plasmodium berghei* ookinetes in the midgut of *Anopheles atroparvus* mosquitoes and *in vitro* 219
- SINDEN, R. E., HARTLEY, R. H. and WINGER, L. The development of *Plasmodium* ookinetes *in vitro*: an ultrastructural study including a description of meiotic division 227
- HOWARD, R. J. and BARNWELL, J. W. Immunochemical analysis of surface membrane antigens on erythrocytes infected with non-cloned SICA[+] or cloned SICA[-] *Plasmodium knowlesi* 245
- WAKI, SEIJI, NAKAZAWA, SHUSHKE, TAVERNE, JANICE, TARGETT, G. A. T. and PLAYFAIR, J. H. L. Immunity to an attenuated variant of *Plasmodium berghei*: role of some non-specific factors 263
- DLUZEWski, A. R., RANGACHARI, K., WILSON, R. J. M. and GRATZER, W. B. Relation of red cell membrane properties to invasion by *Plasmodium falciparum* 273
- DONNELLY, FIONA A. and APPLETON, C. C. Observations on the field transmission dynamics of *Schistosoma mansoni* and *S. mattheei* in southern Natal, South Africa 281
- VERCROYSSE, J., FRANSEN, J., SOUTHGATE, V. R. and ROLLINSON, D. Pathology of *Schistosoma curassoni* infection in sheep 291
- JAMES, STEPHANIE L. and CHEEVER, A. W. Comparison of immune responses between high and low responder strains of mice in the concomitant immunity and vaccine models of resistance to *Schistosoma mansoni* 301
- DOBSON, A. P. The population dynamics of competition between parasites 317
- JUDSON, D. G., DIXON, J. B., CLARKSON, M. J. and PRITCHARD, J. Ovine hydatidosis: some immunological characteristics of the seronegative host 349
- ASH, C. P. J., CROMPTON, D. W. T. and LUNN, P. G. Endocrine responses of protein-malnourished rats infected with *Nippostrongylus brasiliensis* (Nematoda) 359
- DUNPHY, G. B. and WEBSTER, J. M. Influence of *Steinernema feltiae* (Filipjev) Wouts, Mracek, Gerdin and Bedding DD 136 strain on the humoral and haemocytic responses of *Galleria mellonella* (L.) larvae to selected bacteria 369

GREGORY, P. C., WENHAM, G., POPPI, D., COOP, R. L., MACRAE, J. C. and MILLER, S. J. The influence of a chronic subclinical infection of <i>Trichostrongylus colubriformis</i> on gastrointestinal motility and digesta flow in sheep	381
MURRILLS, R. J., READER, T. A. J. and SOUTHGATE, V. R. Studies on the invasion of <i>Notocotylus attenuatus</i> (Notocotylidae: Digenea) into its snail host <i>Lymnaea peregra</i> : the contents of the fully embryonated egg	397
<i>Proceedings of the British Society for Parasitology</i>	407

PART 3 DECEMBER 1985

MONS, B., JANSE, C. J., BOORSMA, E. G. and VAN DER KAAAY, H. J. Synchronized erythrocytic schizogony and gametocytogenesis of <i>Plasmodium berghei</i> <i>in vivo</i> and <i>in vitro</i>	423
SHINN, G. L. and CHRISTENSEN, A. M. <i>Kronborgia pugettensis</i> sp.nov. (Neorhabdocoela: Fecampiidae), an endoparasitic turbellarian infesting the shrimp <i>Heptacarpus kincaidi</i> (Rathbun), with notes on its life-history	431
DEN HOLLANDER, J. E. and ERASMUS D. A. <i>Schistosoma mansoni</i> : male stimulation and DNA synthesis by the female.	449
GLAUERT, AUDREY M., LAMMAS, D. A. and DUFFUS, W. P. H. Ultrastructural observations on the interaction <i>in vitro</i> between bovine eosinophils and juvenile <i>Fasciola hepatica</i>	459
WINCH, JUDITH M. and RILEY, J. Experimental studies on the life-cycle of <i>Raillietiella gigliolii</i> (Pentastomida: Cephalobaenida) in the South American worm-lizard <i>Amphisbaena alba</i> : a unique interaction involving two insects	471
AGATSUMA, T. and HABE, S. The inheritance of enzyme variants of glutamic-oxaloacetic transaminase in <i>Paragonimus ohirai</i>	483
AGATSUMA, T. and HABE, S. Electrophoretic studies on enzymes of diploid and triploid <i>Paragonimus westermani</i>	489
FOX, P. C. and ATKINSON, H. J. Enzyme variation in pathotypes of the potato cyst nematodes <i>Globodera rostochiensis</i> and <i>G. pallida</i>	499
FOX, P. C. and ATKINSON, H. J. Pyrolysis gas-liquid chromatography of the pathotypes of the potato cyst nematodes <i>Globodera rostochiensis</i> and <i>G. pallida</i>	507
HARRIS, P. D. Observations on the development of the male reproductive system in <i>Gyrodactylus gasterostei</i> Gläser, 1974 (Monogenea, Gyrodactylidae)	519
MADHAVI, R. and ANDERSON, R. M. Variability in the susceptibility of the fish host, <i>Poecilia reticulata</i> , to infection with <i>Gyrodactylus bullatarudis</i> (Monogenea)	531
MURRILLS, R. J., READER, T. A. J. and SOUTHGATE, V. R. Studies on the invasion of <i>Notocotylus attenuatus</i> (Notocotylidae: Digenea) into its snail host, <i>Lymnaea peregra</i> . <i>In vitro</i> observations on the hatching mechanism of the egg	545
SKORPING, ARNE. Parasite-induced reduction in host survival and fecundity: the effect of the nematode <i>Elaphostrongylus rangiferi</i> on the snail intermediate host	555

THOMPSON, A. B. <i>Proflicollis botulus</i> (Acanthocephala) abundance in the eider duck (<i>Somateria mollissima</i>) on the Ythan estuary, Aberdeenshire	563
RODRIGUEZ-CAABEIRO, F., CRIADO-FORNELIO, A. and JIMENEZ-GONZALEZ, A. A comparative study of the succinate dehydrogenase-fumarate reductase complex in the genus <i>Trichinella</i>	577
STOREY, G. W. and PHILLIPS, R. A. The survival of parasite eggs throughout the soil profile	585
GILL, H. S. and WALKER, A. R. Differential cellular responses at <i>Hyalomma anatolicum anatolicum</i> feeding sites on susceptible and tick-resistant rabbits	591
<i>Trends and Perspectives</i>	
SHERMAN, IRWIN, W. Membrane structure and function of malaria parasites and the infected erythrocyte	609
BOOK REVIEWS	647

PARASITOLOGY

BACK VOLUMES. Vols. 1–39: Inquiries should be addressed to Wm. Dawson & Sons Ltd, Cannon House, Folkestone, Kent. Vols. 40 onwards: quotations for parts still in print may be obtained from the Cambridge or New York offices of the Cambridge University Press.

COPYING. This journal is registered with the Copyright Clearance Center, 21 Congress Street, Salem, Mass. 01970. Organizations in the USA who are also registered with C.C.C. may therefore copy material (beyond the limits permitted by sections 107 and 108 of US copyright law) subject to payment to C.C.C. of the per-copy fee of \$05.00. This consent does not extend to multiple copying for promotional or commercial purposes. Code 0031–1820/85/0091–0001 \$05.00.

ISI TEAR SERVICE, 3501 Market Street, Philadelphia, Pennsylvania 19104, USA, is authorized to supply single copies of separate articles for private use only.

FOR ALL OTHER USE, permission should be sought from the Cambridge or New York offices of the Cambridge University Press.

CLAIMS for missing issues can only be considered if made immediately after receipt of the subsequent issue.

ADVERTISING. Details of advertising in *Parasitology* may be obtained from the publisher.

PARASITOLOGY

Volume 91, Part 3, December 1985

CONTENTS

	PAGE
MONS, B., JANSE, C. J., BOORSMA, E. G. and VAN DER KAAJ, H. J. Synchronized erythrocytic schizogony and gametocytogenesis of <i>Plasmodium berghei</i> <i>in vivo</i> and <i>in vitro</i>	423
SHINN, G. L. and CHRISTENSEN, A. M. <i>Kronborgia pugettensis</i> sp.nov. (Neorhabdocoela: Fecampiidae), an endoparasitic turbellarian infesting the shrimp <i>Heptacarpus kincaidi</i> (Rathbun), with notes on its life-history	431
DEN HOLLANDER, J. E. and ERASMUS, D. A. <i>Schistosoma mansoni</i> : male stimulation and DNA synthesis by the female	449
GLAUERT, AUDREY M., LAMMAS, D. A. and DUFFUS, W. P. H. Ultrastructural observations on the interaction <i>in vitro</i> between bovine eosinophils and juvenile <i>Fasciola hepatica</i>	459
WINCH, JUDITH M. and RILEY, J. Experimental studies on the life-cycle of <i>Raillietiella giglioli</i> (Pentastomida: Cephalobaenida) in the South American worm-lizard <i>Amphisbaena alba</i> : a unique interaction involving two insects	471
AGATSUMA, T. and HABE, S. The inheritance of enzyme variants of glutamic-oxaloacetic transaminase in <i>Paragonimus ohirai</i>	483
AGATSUMA, T. and HABE, S. Electrophoretic studies on enzymes of diploid and triploid <i>Paragonimus westermani</i>	489
FOX, P. C. and ATKINSON, H. J. Enzyme variation in pathotypes of the potato cyst nematodes <i>Globodera rostochiensis</i> and <i>G. pallida</i>	499
FOX, P. C. and ATKINSON, H. J. Pyrolysis gas-liquid chromatography of the pathotypes of the potato cyst nematodes <i>Globodera rostochiensis</i> and <i>G. pallida</i>	507
HARRIS, P. D. Observations on the development of the male reproductive system in <i>Gyrodactylus gasterostei</i> Gläser, 1974 (Monogenea, Gyrodactylidae)	519
MADHAVI, R. and ANDERSON, R. M. Variability in the susceptibility of the fish host, <i>Poecilia reticulata</i> , to infection with <i>Gyrodactylus bullatarudis</i> (Monogenea)	531
MURRILLS, R. J., READER, T. A. J. and SOUTHGATE, V. R. Studies on the invasion of <i>Notocotylus attenuatus</i> (Notocotylidae: Digenea) into its snail host, <i>Lymnaea peregra</i> . <i>In vitro</i> observations on the hatching mechanism of the egg	545
SKORPING, ARNE. Parasite-induced reduction in host survival and fecundity: the effect of the nematode <i>Elaphostrongylus rangiferi</i> on the snail intermediate host	555
THOMPSON, A. B. <i>Profilicollis botulus</i> (Acanthocephala) abundance in the eider duck (<i>Somateria mollissima</i>) on the Ythan estuary, Aberdeenshire	563
RODRIGUEZ-CAABEIRO, F., CRIADO-FORNELIO, A. and JIMENEZ-GONZALEZ, A. A comparative study of the succinate dehydrogenase-fumarate reductase complex in the genus <i>Trichinella</i>	577
STOREY, G. W. and PHILLIPS, R. A. The survival of parasite eggs throughout the soil profile	585
GILL, H. S. and WALKER, A. R. Differential cellular responses at <i>Hyalomma anatolicum anatolicum</i> feeding sites on susceptible and tick-resistant rabbits	591
<i>Trends and Perspectives</i>	
SHERMAN, IRWIN W. Membrane structure and function of malaria parasites and the infected erythrocyte	609
BOOK REVIEWS	647

© Cambridge University Press 1985

The Pitt Building, Trumpington Street, Cambridge CB2 1RP
32 East 57th Street, New York, NY 10022, USA
10 Stamford Road, Oakleigh, Melbourne 3166, Australia

Printed in Great Britain by the University Press, Cambridge