

# Effects of rapid tryptophan depletion on brain

## 5-HT<sub>2</sub> receptors: a PET study

LAKSHMI N. YATHAM, PETER F. LIDDLE, I-SHIN SHIAH, RAYMOND W. LAM, MICHAEL J. ADAM, ATHANASIOS P. ZIS and THOMAS J. RUTH

**Background** The mechanism by which rapid tryptophan depletion (RTD) paradigm induces depressive relapse in recently remitted patients with depression is unknown.

**Aims** To determine the effects of RTD on brain 5-HT<sub>2</sub> receptors using positron emission tomography (PET) and <sup>18</sup>F-labelled setoperone.

**Method** Ten healthy women underwent two PET scans. Each scan was done 5 h after the ingestion of either a balanced or a tryptophan-deficient amino acid mixture, and the two test sessions were separated by at least 5 days.

**Results** The RTD decreased plasma free tryptophan levels significantly but it had no significant effects on mood. Subjects showed a significant decrease in brain 5-HT<sub>2</sub> receptor binding in various cortical regions following the RTD session.

**Conclusions** When taken with the evidence that antidepressant treatment is associated with a decrease in brain 5-HT<sub>2</sub> receptors, these findings suggest that a decrease in 5-HT<sub>2</sub> binding following RTD might be an adaptive response that provides protection against depressive symptoms.

**Declaration of interest** None.

Rapid tryptophan depletion (RTD) paradigm induces a transient relapse of depressive symptoms in approximately 50% of patients with recently remitted depression treated with selective serotonin reuptake inhibitors (SSRIs) but not in those treated with norepinephrine reuptake inhibitors (NRIs) (Delgado *et al*, 1999). The RTD does not induce any mood changes consistently in healthy volunteers (Lam *et al*, 2000). The RTD probably decreases brain 5-hydroxytryptamine (5-HT) levels in all groups, but only 50% of SSRI-treated patients experience depressive relapse; hence, a decrease in brain 5-HT alone cannot account for a depressive relapse. It is, however, conceivable that a decrease in brain 5-HT levels could induce changes in another component of the 5-HT system, such as the 5-HT<sub>2</sub> receptors that determine whether or not a subject experiences depressive symptoms. In this study, we assessed the effects of RTD on brain 5-HT<sub>2</sub> receptors in healthy women using positron emission tomography (PET) and <sup>18</sup>F-labelled setoperone (<sup>18</sup>F-setoperone).

## METHOD

### Subjects

This study was approved by the University of British Columbia human ethics committee. Subjects for the study were recruited through advertisements. They were evaluated by a structured clinical interview for DSM-IV, non-patient version (SCID-NP; Spitzer *et al*, 1992). Because reduction in the rate of 5-HT synthesis is greater in women following RTD (Nishizawa *et al*, 1998), we recruited ten women with no life-time history of psychiatric diagnosis and no family history of psychiatric disorders in the first-degree relatives for participation in the study. Subjects' ages ranged from 21 to 47 years, with a mean (s.d.) of 30.3 (7.87) years. All subjects were physically healthy, drug free and gave written

informed consent for participation in the study.

### Positron emission tomography scanning and RTD protocol

All study subjects had a high-resolution magnetic resonance imaging scan of the head to exclude cerebral pathology and facilitate localisation of brain regions in PET images. The <sup>18</sup>F-setoperone was prepared by a modified method of Crouzel *et al* (1988), as described by Adam *et al* (1997). Each subject was scanned on two separate days 5 h after the ingestion of amino acid mixtures. The scanning on one day was preceded by the ingestion of a nutritionally balanced mixture (15 amino acids and 2.3 g of L-tryptophan; control session) and on the other day by the ingestion of a tryptophan-deficient amino acid mixture (15 amino acid drink that contained all the other amino acids but no tryptophan; RTD session). The composition of the amino acid mixture was the same as that used by Delgado *et al* (1999). The amino acid mixture was flavoured with chocolate syrup and the unpleasant ingredients were given in a capsule form. The administration of the amino acid mixture was done in a randomised, counterbalanced protocol, with two test days separated by at least 5 days.

Subjects presented to the Mood Disorders Clinical Research Unit at 7 a.m. At 7.15 a.m., an intravenous cannula was inserted and a blood sample was drawn for free tryptophan levels. Behavioural ratings were completed prior to and 5 h after the ingestion of amino acid mixtures. Ratings included a 20-item Hamilton Rating Scale for Depression (HRSD) consisting of the 29-item HRSD (Williams *et al*, 1991) modified to exclude the nine items that could not be rated within the same day, such as sleep, eating (because patients were fasting), weight and diurnal variation. We also administered the Profile of Mood States (POMS; McNair *et al*, 1988) to detect sub-clinical mood changes. After subjects ingested the amino acid mixture, they stayed in a room for the next 5 h. During this period, subjects were allowed to read magazines. Approximately 5 h later, they had a second blood sample drawn for free tryptophan levels. Following this, the subjects were escorted to the PET suite.

Blood samples were centrifuged immediately for 30 min and an ultrafiltrate of plasma was obtained by additional

centrifuge (2000 g) at room temperature for 30 min through a cellulose ultrafiltration membrane system (Amicon Co., Beverly, MA, USA) for assay of plasma free tryptophan levels. The ultrafiltrate samples were frozen at  $-70^{\circ}\text{C}$  and later assayed using high-performance liquid chromatography with fluorometric detection (Anderson *et al.*, 1981).

Subjects had a transmission scan done to correct PET images for attenuation. Following this, subjects were given 148–259 MBq of  $^{18}\text{F}$ -setoperone intravenously. The radioactivity in the brain was measured with the PET camera system ECAT 953B/31 (CTI/Siemens, Knoxville, TN, USA). The spatial resolution of images is about 5 mm. We performed 15 frame dynamic emission scans on each subject for a total of 110 min. The numbers and durations of the frames were as follows:  $5 \times 2$  min (10 min),  $4 \times 5$  min (20 min),  $4 \times 10$  min (40 min) and  $2 \times 20$  min (40 min). The subjects underwent the same protocol 5–7 days later, so that by the end of the second test session the subjects had  $^{18}\text{F}$ -setoperone scans preceded by an RTD session and control test sessions. At the end of each test session, subjects were assessed clinically. None had any substantial changes in mood.

### Data analysis

A multipurpose imaging tool (Pietrzyk *et al.*, 1994) was used to draw regions in frontal, temporal and parietal cortex and cerebellum. When time–activity curves were plotted, they showed that the cortex/cerebellum ratio was constant between 70 and 110 min, indicating the occurrence of pseudo-equilibrium during this time period for the tracer. Hence, the PET data obtained during this period were used for comparing the differences in binding between the RTD and control sessions.

If it is assumed that there is no specific binding to 5-HT<sub>2</sub> receptors in the cerebellum and, furthermore, that non-specific binding is the same in cerebellum as in cortex, the ratio of binding in cortex ( $C_x$ ) to cerebellum ( $C_b$ ) is given by:

$$C_x/C_b = f2(B_{\max}/K_d) + 1 \quad (1)$$

where  $B_{\max}$  is the total number of receptors,  $K_d$  is the equilibrium dissociation rate constant of the ligand–receptor complex and  $f2 = 1/[1 + (k5/k6)]$ , where  $k5$  and  $k6$  are the transfer coefficients for association

and dissociation from non-specific binding sites. The ratio  $B_{\max}/K_d$  is known as the specific binding potential. Because the time course of  $^{18}\text{F}$ -setoperone accumulation in cerebellum is not affected by saturating doses of the 5-HT<sub>2</sub> blocker ketanserin (Blin *et al.*, 1990), it is reasonable to assume that specific binding in the cerebellum is negligible. However, recently, Petit-Tabou *et al.* (1999) have shown that the non-specific binding is lower in cortex than that in cerebellum in humans. Under circumstances where non-specific binding in cerebellum differs from that in cortex, the ratio of binding in cortex to that in cerebellum is given by:

$$C_x/C_b = f2_{\text{cb}}[(B_{\max}/K_d) + (k5/k6)_{\text{cx}} + 1] \quad (2)$$

where  $f2_{\text{cb}}$  is the value of  $f2$  derived using cerebellar values for the transfer coefficients  $k5$  and  $k6$ , whereas  $(k5/k6)_{\text{cx}}$  is evaluated using cortical values for  $k5$  and  $k6$ . Assuming that non-specific binding is not affected by tryptophan depletion, the change in  $C_x/C_b$  between the baseline and depleted sessions is given by:

$$\Delta(C_x/C_b) = f2_{\text{cb}}\Delta(B_{\max}/K_d) \quad (3)$$

where  $\Delta(B_{\max}/K_d)$  is the change in specific binding potential.

An alternative approach would be to employ a change in the ratio of regional to mean global cortical setoperone concentration to obtain a value that is proportional to the change in local binding potential between conditions (see Yatham *et al.*, 1999, for details). This method has the advantage of circumventing the uncertainty surrounding the differences in non-specific binding between cortex and cerebellum. This method, however, is only valid provided that the mean global binding potential does not vary substantially between conditions. Our data suggest that the mean (s.d.) global binding potential was significantly lower in the RTD session (1.56965 (0.38850)) than in the control session (1.64726 (0.35139)) ( $P < 0.01$ ) and hence this method cannot be used to compare the differences in binding between the sessions.

We therefore employed the method based on the ratio of cortical to cerebellar binding to derive a measure of change in 5-HT<sub>2</sub> receptor binding potential for each voxel from the measured change in cortex/cerebellum ratio (employing Equation (3)), assuming that the non-specific binding in

cortex and cerebellum did not vary significantly between the RTD and control sessions. Furthermore, it should be noted that the quantity that is determined for each subject is not the change in binding potential itself, but is  $f2_{\text{cb}}\Delta(B_{\max}/K_d)$ . None the less, under the assumption that non-specific binding is not affected by tryptophan depletion, this quantity can be regarded as a measure of change in binding potential.

Statistical Parametric Mapping (SPM96) software (Friston *et al.*, 1991, 1995) was used to align PET images, co-register them to magnetic resonance images and transform the magnetic resonance images (and PET images) into the standard coordinate frame used for templates in SPM96. Then an  $^{18}\text{F}$ -setoperone binding image was created by dividing each pixel in the RTD and control session realigned normalised mean images by that image's average cerebellar value. A mean activity value from two large regions of interest (one on the right and one on the left) drawn on three contiguous cerebellar slices was used as that image's average cerebellar value. The binding images were smoothed by applying a 12-mm full width at half-maximum (FWHM) isotropic Gaussian filter to improve the signal-to-noise ratio.

### Statistical analysis

Statistical parametric mapping (SPM96) software was used to determine the change in cortex/cerebellum ratio (hereafter referred to as the 5-HT<sub>2</sub> binding potential: 5-HT<sub>2</sub>BP) between the RTD and control sessions. The grey matter threshold was determined using a multipurpose imaging tool (Pietrzyk *et al.*, 1994) and was set at 1.3 times the mean global cerebral image intensity, to exclude non-grey matter voxels in the analysis. For each voxel, the  $Z$  value corresponding to the  $t$  statistic for the difference in 5-HT<sub>2</sub>BP between the RTD and control sessions was computed. We also computed the  $Z$  value for each voxel for the difference in 5-HT<sub>2</sub>BP between the first and second scans for each subject to examine the order of scanning effects. In estimating the significance of change in individual voxels, the method developed by Worsley (1994) as implemented in SPM was used to correct for multiple comparisons, taking into account the correlation between voxels. In addition, we also computed the significance of change in clusters of contiguous voxels exceeding a threshold of  $Z = 2.33$ , as implemented in

SPM96 based on the method of Poline *et al* (1997).

Behavioural and plasma free tryptophan data were analysed using paired and unpaired *t*-tests and repeated-measures analysis of variance (ANOVA) with time and session as intrasubject factors. Data are presented as mean (s.d.) and all tests were two-tailed, with significance set at  $P < 0.05$ . All analyses were performed on a personal computer using the Statistical Package for Social Science (SPSS) software, version 7.5 (SPSS, 1996).

## RESULTS

### Effects of RTD on plasma free tryptophan levels and mood

Figure 1 shows the plasma free tryptophan levels during the RTD and control sessions. Baseline mean (s.d.) plasma free tryptophan levels did not differ significantly between control (0.86 (0.07)  $\mu\text{g/ml}$ ) and RTD (0.95 (0.09)  $\mu\text{g/ml}$ ) sessions ( $t = -0.72$ ,  $d.f. = 18$ ,  $P = 0.47$ ). As expected, the RTD session significantly reduced plasma free tryptophan levels (to 0.27 (0.19)  $\mu\text{g/ml}$ , 71.5% decrease) ( $t = 7.76$ ,  $d.f. = 9$ ,  $P < 0.0001$ ), whereas in the control session there was a significant increase in plasma free tryptophan levels (to 2.76 (1.16)  $\mu\text{g/ml}$ ;  $t = -5.51$ ,  $d.f. = 9$ ,  $P < 0.0001$ ). Moreover, repeated-measures ANOVA showed a significant session  $\times$  time interaction effect ( $F = 46.2$ ,  $d.f. = 1, 9$ ,  $P < 0.0001$ ), indicating that RTD led to a significant reduction in the plasma free tryptophan level when compared with the control session. With regard to behavioural rating, none of our study subjects became depressed during either session, as shown by no significant changes in the HRSD and POMS ratings (not shown; data available from L.N.Y. upon request).

### Effects of RTD on brain 5-HT<sub>2</sub> receptors

The 5-HT<sub>2</sub>BP was decreased significantly following the RTD session compared with the control session. Analysis with SPM showed an extensive cluster of voxels embracing frontal, temporal, parietal and occipital cortical regions (Fig. 2). The reduction in 5-HT<sub>2</sub>BP in this cluster was highly significant even after correcting for multiple comparisons ( $P < 0.0001$ ) (Table 1). The cluster included 28 106 voxels and this corresponds to about 39% of the volume of grey matter that was in the field of view. The mean reduction in 5-HT<sub>2</sub>BP

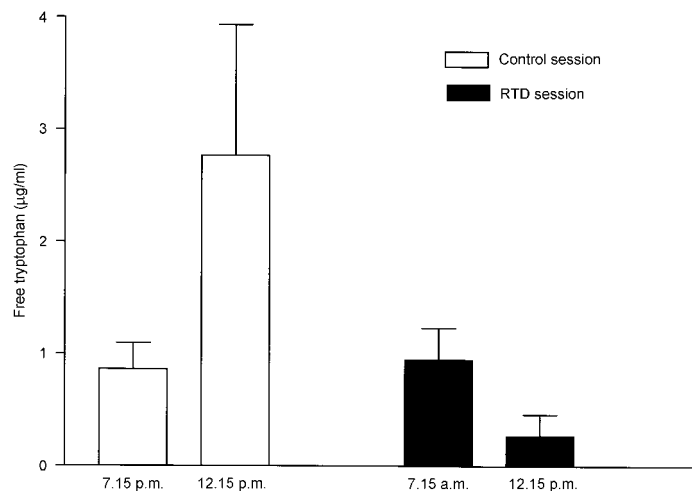


Fig. 1 Mean (s.d.) plasma free tryptophan levels during rapid tryptophan depletion (RTD) and control sessions in ten healthy subjects.

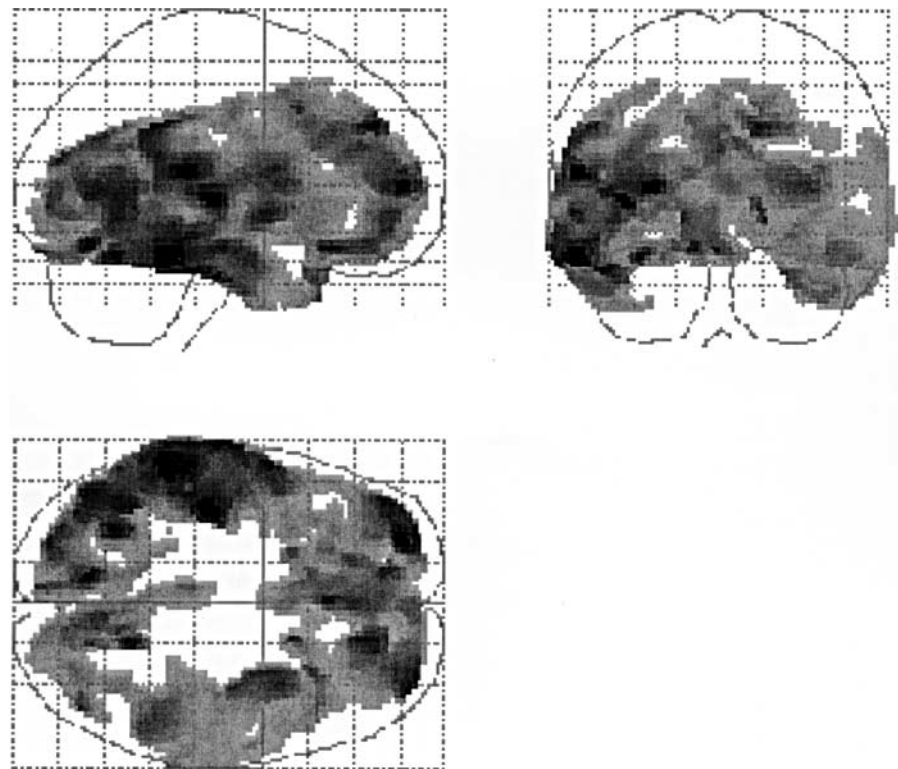


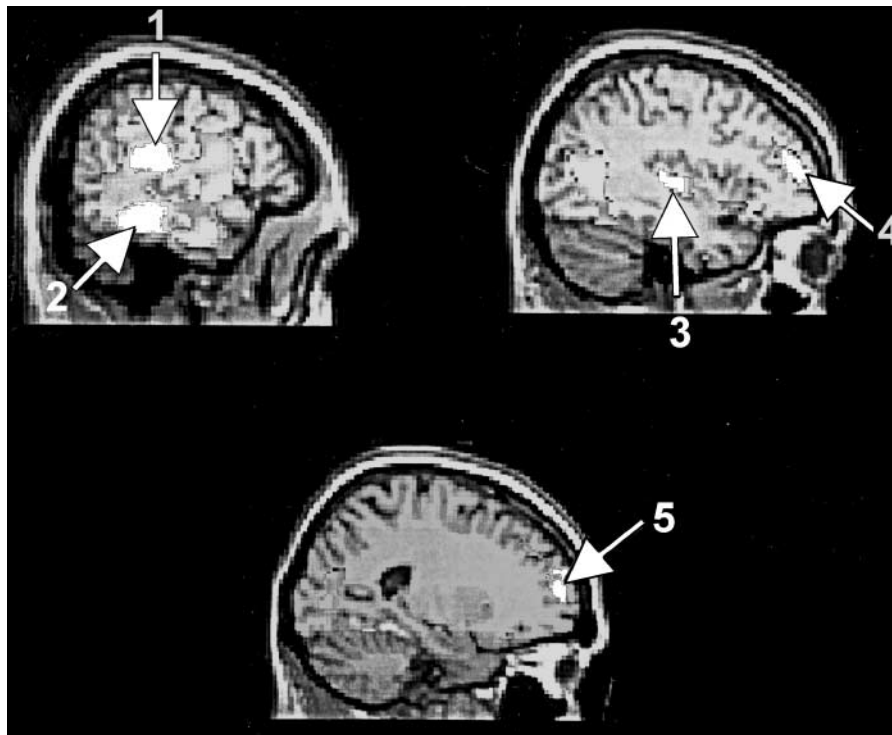
Fig. 2 Statistical parametric maps of *t* values displayed as maximum intensity projections on the sagittal (upper left), transverse (lower left) and coronal (upper right) renderings of the brain. These projections show regions of decreased <sup>18</sup>F-setoperone binding following an RTD session. Voxels for which *Z* exceeds 2.33 are shown in shades of grey (range 2.33–4.67).

was 7.9% for the entire cluster. There were 134 voxels within this cluster that satisfied the criteria for significance for individual voxels.

The location and *Z* value for change in 5-HT<sub>2</sub>BP at local maxima where *Z* exceeded 4.00 ( $P < 0.025$  after correction for multiple comparisons) are given in Table 1. The areas

**Table 1** Cluster size, *P* and *Z* values, and coordinates with *P* and *Z* values, for brain regions with significant decreases in <sup>18</sup>F-setoperone binding in ten healthy subjects following a rapid tryptophan depletion (RTD) session

Cluster			Voxels					
Size	<i>Z</i> value	Corrected <i>P</i> value	<i>Z</i> value	Corrected <i>P</i> value	Coordinates			Brain region
					<i>x</i>	<i>y</i>	<i>z</i>	
28 106	4.67	0.000	4.67	0.004	-56	-38	-22	Left fusiform gyrus
			4.51	0.008	-38	-20	4	Left insula
			4.50	0.008	-56	-30	14	Left superior temporal gyrus
			4.18	0.029	-24	56	10	Left superior frontal gyrus

**Fig. 3** Sagittal renderings of the brain showing areas of significant decreases in <sup>18</sup>F-setoperone binding indicated by arrows (1, left superior temporal gyrus; 2, left fusiform gyrus; 3, left insula; 4, left superior frontal gyrus; 5, left superior frontal gyrus) in ten healthy subjects following an RTD session.

that showed the most significant decrease in 5-HT<sub>2</sub>BP included the left fusiform gyrus, left insula, left superior temporal gyrus and left superior frontal gyrus (Table 1 and Fig. 3).

There was no difference in 5-HT<sub>2</sub>BP between first and second scans, indicating that scanning order had no systematic effect on 5-HT<sub>2</sub>BP.

## DISCUSSION

This is the first study to measure the effects of RTD on brain 5-HT<sub>2</sub> receptors in living

humans using PET and <sup>18</sup>F-setoperone. Our findings indicated that RTD led to a significant widespread reduction in 5-HT<sub>2</sub>BP in various cortical regions bilaterally. The reduction in 5-HT<sub>2</sub>BP was particularly prominent in the left fusiform gyrus, left insula, left superior temporal gyrus and left superior frontal gyrus.

A potential source of artefactual result must be considered before ascribing the decrease in 5-HT<sub>2</sub>BP to a true decrease in 5-HT<sub>2</sub> receptor density. The estimates of 5-HT<sub>2</sub>BP might have been confounded by changes in endogenous 5-HT levels that would have occurred following RTD.

Several studies in recent years have suggested that the *in vivo* measurement of neurotransmitter receptors is affected by changes in the levels of endogenous neurotransmitter. This has been demonstrated very elegantly in the case of D<sub>2</sub> receptors by manipulating endogenous dopamine levels (Breier *et al*, 1997; Laruelle *et al*, 1997). These studies have shown that increasing the synaptic dopamine concentration with amphetamine or methylphenidate reduces, whereas decreasing the synaptic dopamine concentration with dopamine synthesis inhibitor  $\alpha$ -methyl-*p*-tyrosine (AMPT) increases, the striatal D<sub>2</sub> receptor binding as measured with <sup>11</sup>C-raclopride (Breier *et al*, 1997) or <sup>123</sup>I-iodobenzamide (IBZM) (Laruelle *et al*, 1997). It is, therefore, conceivable that the changes in endogenous 5-HT levels could affect the estimates of 5-HT<sub>2</sub> receptor binding with PET. However, RTD is expected to decrease rather than increase brain 5-HT levels. This should leave a greater number of 5-HT<sub>2</sub> receptors unoccupied. In such a situation, one would expect to see an increase in 5-HT<sub>2</sub>BP as measured with <sup>18</sup>F-setoperone. Because we found a decrease in 5-HT<sub>2</sub>BP, this is unlikely to be due to a confounding effect of a decrease in brain 5-HT levels.

### Is the decrease in 5-HT<sub>2</sub>BP due to a change in 5-HT<sub>2</sub> receptor affinity or density?

The methods used in this study provide a semi-quantitative estimate of 5-HT<sub>2</sub>BP but do not permit an independent determination of *B*<sub>max</sub> (density) or *K*<sub>d</sub> (affinity). Therefore, we cannot tell whether the decrease in 5-HT<sub>2</sub>BP observed in the study subjects following RTD was due to a decrease in *B*<sub>max</sub> or an increase in *K*<sub>d</sub>. However, most (Peroutka & Snyder, 1980; Kellar & Stockmeier, 1986; Paul *et al*, 1988; Mason *et al*, 1993; Klimek *et al*, 1994; Hensler & Truett, 1998), although not all (Blackshear & Sanders-Bush, 1982), studies that examined the acute or chronic effects of antidepressants or electroconvulsive shock on various 5-HT receptors in rats reported an alteration in *B*<sub>max</sub> and not *K*<sub>d</sub>; this would suggest that pharmacological or somatic interventions commonly lead to changes in *B*<sub>max</sub> and not *K*<sub>d</sub>. Hence, the decrease in 5-HT<sub>2</sub>BP observed in our study subjects is more likely to be due to a decrease in *B*<sub>max</sub> than to an increase in *K*<sub>d</sub>.



### Could 5-HT<sub>2</sub> receptors down-regulate rapidly?

Another issue that needs to be considered before ascribing the decrease in 5-HT<sub>2</sub>BP to a decrease in  $B_{max}$  and hence to a decrease in 5-HT<sub>2</sub> receptor density is whether receptor density could change within a 6–7 h time period following an intervention. Indeed, animal studies have shown that 5-HT<sub>2</sub> receptor density was significantly reduced 48 h after a single dose of mianserin (Blackshear & Sanders-Bush, 1982; Hensler & Truett, 1998). Similarly, rats that received injections of 5-HT<sub>2</sub> agonist DOM (4-methyl-2,5-dimethoxyphenylisopropylamine) every 8 h showed a significant decrease in 5-HT<sub>2</sub> receptors in frontal cortex following the second injection (Leysen & Pauwels, 1990). Other studies have shown that treatment with imipramine, amitriptyline and desipramine for 2–7 days also led to a reduction in 5-HT<sub>2</sub> receptor density (Paul *et al*, 1988; Mason *et al*, 1993). A single dose of fluoxetine decreases 5-HT<sub>1A</sub> receptor density within a 24-h period (Klimek *et al*, 1994), therefore it is feasible that RTD could lead to a rapid reduction in 5-HT<sub>2</sub> receptor density.

### Should tryptophan depletion cause an up-regulation rather than a down-regulation of 5-HT<sub>2</sub> receptors?

In general, neurotransmitter receptors up-regulate following depletion of a neurotransmitter or administration of an antagonist, and down-regulate following the administration of an agonist. However, it is well known that the regulation of brain 5-HT<sub>2</sub> receptors does not follow the classical receptor regulation model because both 5-HT<sub>2</sub> agonists as well as antagonists consistently down-regulate 5-HT<sub>2</sub> receptors (Leysen, 1990). Also, some animal studies have shown that experimentally induced 5-HT neuronal lesions that deplete 5-HT cause either no change (Butler *et al*, 1990) or a decrease in brain 5-HT<sub>2</sub> receptors (Leysen *et al*, 1982). These studies indicate that the regulation of 5-HT<sub>2</sub> receptors is peculiar and cannot be predicted based on the classic receptor regulation model. Thus, the finding of a decrease in 5-HT<sub>2</sub>BP following RTD is consistent with what is known about the regulation of this receptor and with the findings of previous animal studies.

### Could a change in 5-HT<sub>2</sub> receptor density determine whether or not a subject experiences depressive symptoms following RTD?

Our finding of no mood changes in healthy volunteers following RTD is consistent with the findings of previous studies in healthy volunteers (see Lam *et al*, 2000, for a review). Could a decrease in 5-HT<sub>2</sub> receptor density in our subjects following RTD explain the lack of mood changes? A number of animal studies have indeed shown that most, but not all, antidepressant medications down-regulate 5-HT<sub>2</sub> receptors (Peroutka & Snyder, 1980; Blackshear & Sanders-Bush, 1982; Cross & Horton, 1988; Paul *et al*, 1988; Hrdina & Vu, 1993; Klimek *et al*, 1994). Furthermore, we have shown recently in a PET study that patients with depression show a significant decrease in brain 5-HT<sub>2</sub> receptors following treatment with desipramine (Yatham *et al*, 1999). Taken together, these observations may indicate that reduced 5-HT<sub>2</sub> receptor density may be potentially a critical event in the prevention and relief of depressive symptoms.

If this were true, only those subjects that fail to down-regulate their brain 5-HT<sub>2</sub> receptors following RTD or those that do not have down-regulated 5-HT<sub>2</sub> receptors should show a transient relapse of depressive symptoms. Animal studies have shown that desipramine (an NRI) consistently down-regulates 5-HT<sub>2</sub> receptors (Peroutka & Snyder, 1980; Goodnough & Baker, 1994), whereas SSRIs such as fluoxetine do not appear to have consistent effects on 5-HT<sub>2</sub> receptors (Peroutka & Snyder, 1980; Hrdina & Vu, 1993). The fact that patients treated with NRIs do not relapse following RTD is in keeping with this hypothesis because these patients already would have down-regulated 5-HT<sub>2</sub> receptors. This hypothesis would predict that patients treated with SSRIs would be vulnerable to RTD-induced depression because they would not be expected to have down-regulated 5-HT<sub>2</sub> receptors. However, only 50% of SSRI-treated patients relapse following RTD; possibly these are the patients that cannot down-regulate their 5-HT<sub>2</sub> receptors to prevent relapse of symptoms. There are no PET studies to date that measured the effects of RTD on brain 5-HT<sub>2</sub> receptors in patients with depression. However, a recent PET study that examined brain glucose metabolism reported a decrease in the middle frontal gyrus,

orbitofrontal cortex and thalamus in those patients who relapsed following tryptophan depletion but not in those who did not relapse (Bremner *et al*, 1997). This would support the argument that some SSRI-treated patients may be able to mount a compensatory mechanism to prevent the relapse of depressive symptoms. This hypothesis, however, needs to be tested in patients with recently remitted depression before any firm conclusions can be drawn.

### ACKNOWLEDGEMENTS

This study was supported by grants from the Medical Research Council of Canada and the Canadian Psychiatric Research Foundation to L.N.Y.

### REFERENCES

- Adam, M. J., Lu, S., Jivan, S., *et al* (1997) Simplified purification and synthesis of F-18 setoperone. *Journal of Labeled Compounds and Radiopharmaceuticals*, **40**, 258.
- Anderson, G. M., Young, J. G., Cohen, D. J., *et al* (1981) Liquid-chromatographic determination of serotonin and tryptophan in whole blood and plasma. *Clinical Chemistry*, **27**, 775–776.
- Blackshear, M. A. & Sanders-Bush, E. (1982) Serotonin receptor sensitivity after acute and chronic treatment with mianserin. *Journal of Pharmacology and Experimental Therapeutics*, **221**, 303–308.
- Blin, J., Sette, G., Fiorelli, M., *et al* (1990) A method for the *in vivo* investigation of the serotonergic 5-HT<sub>2</sub> receptors in the human cerebral cortex using positron emission tomography and <sup>18</sup>F-labeled setoperone. *Journal of Neurochemistry*, **54**, 1744–1754.
- Breier, A., Su, T. P., Saunders, R., *et al* (1997) Schizophrenia is associated with elevated amphetamine-induced synaptic dopamine concentrations: evidence from a novel positron emission tomography method. *Proceedings of the National Academy of Sciences USA*, **94**, 2569–2574.
- Bremner, J. D., Innis, R. B., Salomon, R. M., *et al* (1997) Positron emission tomography measurement of cerebral metabolic correlates of tryptophan depletion-induced depressive relapse. *Archives of General Psychiatry*, **54**, 364–374.
- Butler, P. D., Pranzatelli, M. R. & Barkai, A. I. (1990) Regional central serotonin-2 receptor binding and phosphoinositide turnover in rats with 5,7-dihydroxytryptamine lesions. *Brain Research Bulletin*, **24**, 125–129.
- Cross, J. A. & Horton, R. W. (1988) Effects of chronic oral administration of the antidepressants, desmethylimipramine and zimelidine on rat cortical GABA<sub>B</sub> binding sites: a comparison with 5-HT<sub>2</sub> binding site changes. *British Journal of Pharmacology*, **93**, 331–336.
- Crouzel, C., Venet, M., Irie, T., *et al* (1988) Labelling of a serotonergic ligand with <sup>18</sup>F: <sup>18</sup>F-setoperone. *Journal of Labeled Compounds and Radiopharmaceuticals*, **25**, 403–414.
- Delgado, P. L., Miller, H. L., Salomon, R. M., *et al* (1999) Tryptophan-depletion challenge in depressed patients treated with desipramine or fluoxetine: implications for the role of serotonin in the mechanism of antidepressant action. *Biological Psychiatry*, **46**, 212–220.

**Friston, K. J., Frith, C. D., Liddle, P. F., et al (1991)**

Comparing function (PET) images: the assessment of significant change. *Journal of Cerebral Blood Flow and Metabolism*, **11**, 690–699.

—, **Holmes, A. P., Worsley, K. J., et al (1995)**

Statistical parametric maps in functional imaging: a general linear approach. *Human Brain Mapping*, **2**, 189–210.

**Goodnough, D. B. & Baker, G. B. (1994)**

5-Hydroxytryptamine<sub>2</sub> and beta-adrenergic receptor regulation in rat brain following chronic treatment with desipramine and fluoxetine alone and in combination. *Journal of Neurochemistry*, **62**, 2262–2268.

**Hensler, J. G. & Truett, K. A. (1998)**

Effect of chronic serotonin-2 receptor agonist or antagonist administration on serotonin-1A receptor sensitivity. *Neuropsychopharmacology*, **19**, 354–364.

**Hrdina, P. D. & Vu, T. B. (1993)**

Chronic fluoxetine treatment upregulates 5-HT uptake sites and 5-HT<sub>2</sub> receptors in rat brain: an autoradiographic study. *Synapse*, **14**, 324–331.

**Kellar, K. J. & Stockmeier, C. A. (1986)**

Effects of electroconvulsive shock and serotonin axon lesions on beta-adrenergic and serotonin-2 receptors in rat brain. *Annals of the New York Academy of Sciences*, **462**, 76–90.

**Klimek, V., Zak-Knapik, J. & Mackowiak, M. (1994)**

Effect of repeated treatment with fluoxetine and citalopram, 5-HT uptake inhibitors, on 5-HT<sub>1A</sub> and 5-HT<sub>2</sub> receptors in the rat brain. *Journal of Psychiatry and Neuroscience*, **19**, 63–67.

**Lam, R. W., Bowering, T. A., Tam, E. M., et al (2000)**

Effects of rapid tryptophan depletion in patients with seasonal affective disorder in natural summer remission. *Psychological Medicine*, **30**, 79–87.

**Laruelle, M., D'Souza, C. D., Baldwin, R. M., et al (1997)**

Imaging D<sub>2</sub> receptor occupancy by endogenous dopamine in humans. *Neuropsychopharmacology*, **17**, 162–174.

**Leysen, J. E. (1990)**

Gaps and peculiarities in 5-HT<sub>2A</sub> receptor studies. *Neuropsychopharmacology*, **3**, 361–369.

—, **Geerts, R., Gommeren, W., et al (1982)**

Regional distribution of serotonin-2-receptor binding sites in the brain and effects of neuronal lesions. *Archives of International Pharmacodynamics*, **256**, 301–305.

— & **Pauwels, P. J. (1990)**

5-HT<sub>2A</sub> receptors, roles, and regulation. *Annals of the New York Academy of Sciences*, **600**, 183–191.

**Mason, G. A., Walker, C. H. & Little, K. Y. (1993)**

Effects of concurrent subchronic treatments with desmethylimipramine and propranolol on beta-adrenergic and serotonin<sub>2</sub> receptors in rat brain. *Psychopharmacology*, **110**, 110–114.

**McNair, D. M., Lorr, D. & Droppelman, L. F. (1988)**

*Manual for the Profile of Mood States*. San Diego, CA: Education Testing Services.

**Nishizawa, S., Benkelfat, C., Young, S. N., et al (1998)**

Differences between males and females in rates of serotonin synthesis in human brain. *Proceedings of the National Academy of Sciences USA*, **94**, 5308–5313.

**Paul, I. A., Duncan, G. E., Powell, K. R., et al (1988)**

Regionally specific neural adaptation of beta adrenergic and 5-hydroxytryptamine<sub>2</sub> receptors after antidepressant administration in the forced swim test and after chronic antidepressant drug treatment. *Journal of Pharmacology and Experimental Therapeutics*, **246**, 956–962.

## CLINICAL IMPLICATIONS

■ A decrease in brain 5-HT<sub>2</sub> receptors may be critical in determining whether or not subjects experience depressive symptoms following tryptophan depletion.

■ Brain 5-HT<sub>2</sub> receptors may be an important target for an antidepressant effect.

■ A decrease in brain 5-HT levels alone may not cause depressive symptoms.

## LIMITATIONS

■ Because this study did not use kinetic modelling, it is not possible to tell whether the decrease in setoperone binding observed in subjects was due to changes in receptor density or affinity.

■ Because none of the subjects experienced depressive symptoms, the study does not answer the question of whether or not the response of 5-HT<sub>2</sub> receptors to rapid tryptophan depletion differs between those who become depressed and those who do not.

■ We interpret the observed changes in 5-HT<sub>2</sub> receptors as a possible compensatory process that protects against depression, but this study cannot tell us whether 5-HT<sub>2</sub> receptors play a role in the pathophysiology of major depression.

LAKSHMI N. YATHAM, MBBS, Division of Mood Disorders, The University of British Columbia; PETER F. LIDDLE, MBBS, Division of Schizophrenia, The University of British Columbia; I-SHIN SHIAH, PhD, Department of Psychiatry, Tri-Service General Hospital, National Defense Medical Centre, Taipei, Taiwan; RAYMOND W. LAM, MD, Division of Mood Disorders, The University of British Columbia; MICHAEL J. ADAM, PhD, TRIUMF Positron Emission Tomography Programme, The University of British Columbia; ATHANASIOS P. ZIS, MD, Division of Mood Disorders, The University of British Columbia; THOMAS J. RUTH, PhD, TRIUMF Positron Emission Tomography Programme, The University of British Columbia, Vancouver, BC, Canada

Correspondence: Lakshmi N. Yatham, Associate Professor of Psychiatry, Director of Mood Disorders Clinical Research Unit, The University of British Columbia, 2255 Wesbrook Mall, Vancouver, BC, Canada V6T 2A1. Tel: 1 604 822 0562; Fax: 1 604 822 7922; e-mail: yatham@unixg.ubc.ca

(First received 23 June 2000, final revision 1 November 2000, accepted 2 November 2000)

**Peroutka, S. J. & Snyder, S. H. (1980)** Long-term antidepressant treatment decreases spiroperidol-labeled serotonin receptor binding. *Science*, **210**, 88–90.

**Petit-Tabou, M.-C., Landeau, B., Barre, L., et al (1999)** Parametric PET imaging of 5HT<sub>2A</sub> receptor distribution with <sup>18</sup>F-setoperone in the normal human neocortex. *Journal of Nuclear Medicine*, **40**, 25–32.

**Pietrzyk, U., Herholz, K., Fink, G., et al (1994)** An interactive technique for three-dimensional image registration: validation for PET, SPECT, MRI, and CT brain studies. *Journal of Nuclear Medicine*, **35**, 2011–2018.

**Poline, J. B., Worsley, K. J., Evans, A. C., et al (1997)** Combining spatial extent and peak intensity to test for activations in functional imaging. *Neuroimage*, **5**, 83–96.

**Spitzer, R. L., Williams, J. B. W., Gibbon, M., et al (1992)** *Structured Clinical Interview for DSM-III-R, Nonpatient Edition*. Washington, DC: American Psychiatric Association.

**SPSS (1996)** *SPSS for Windows (Version 7.5)*. Chicago, IL: SPSS.

**Williams, J. B. W., Link, M. & Rosenthal, N. E. (1991)** *Structured Interview Guide for the Hamilton Depression Rating Scale, Seasonal Affective Disorders Version (SIGH-SAD)*. New York: New York Psychiatric Institute.

**Worsley, K. J. (1994)** Local maxima and the expected Euler characteristic of excursion sets of Chi<sup>2</sup>, F and t fields. *Advanced Applied Probability*, **26**, 13–42.

**Yatham, L. N., Liddle, P. F., Dennie, J., et al (1999)** Decrease in brain serotonin 2 receptor binding in patients with major depression following desipramine treatment: a positron emission tomography study with fluorine 18-labeled setoperone. *Archives of General Psychiatry*, **56**, 705–711.