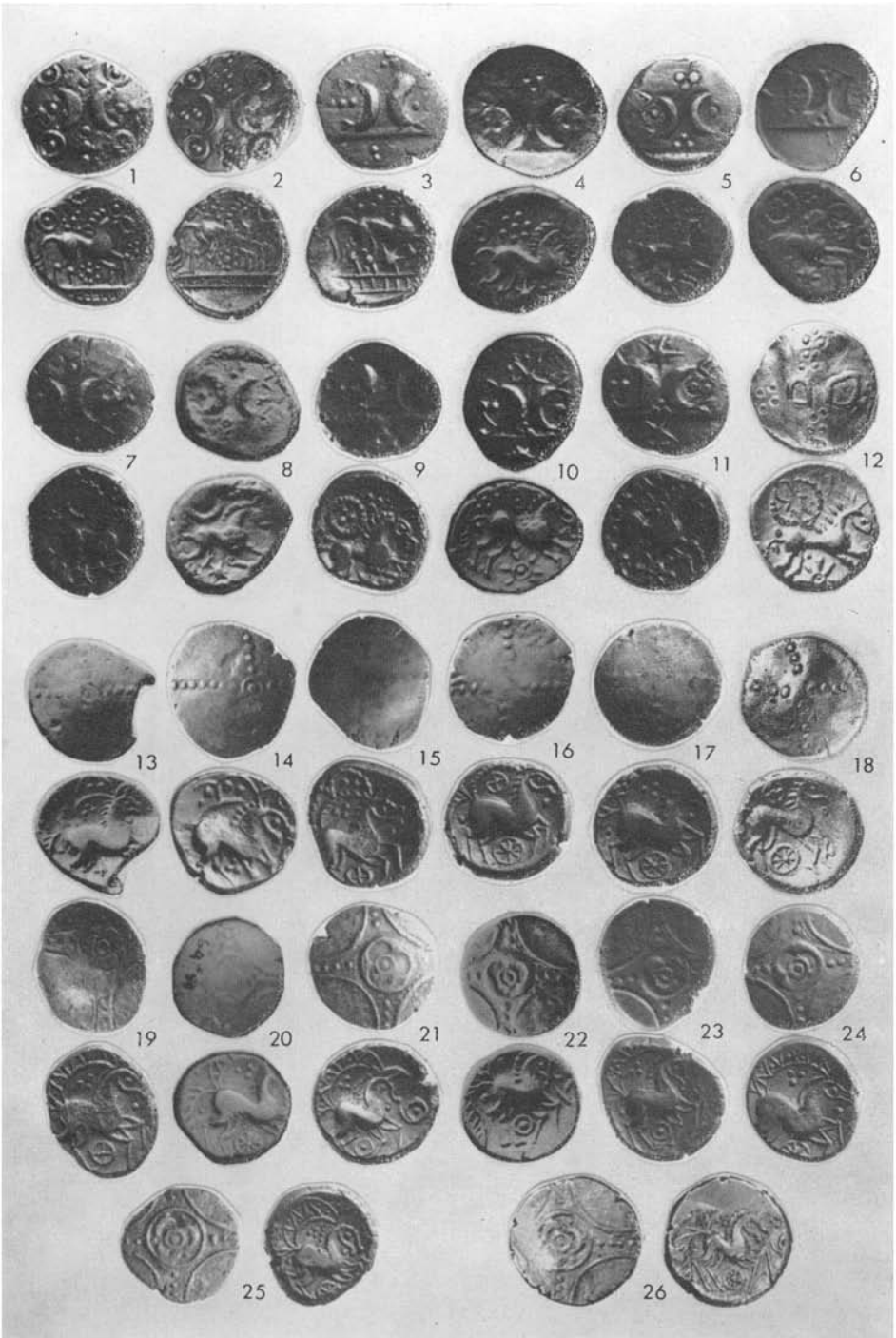


PLATE I



ICENIAN COINS, Nos. 1-26 (†)  
See p. 25 f. for description.

PLATE II



ICENIAN COINS, Nos. 27-54 (1)  
See p. 26 f. for description.

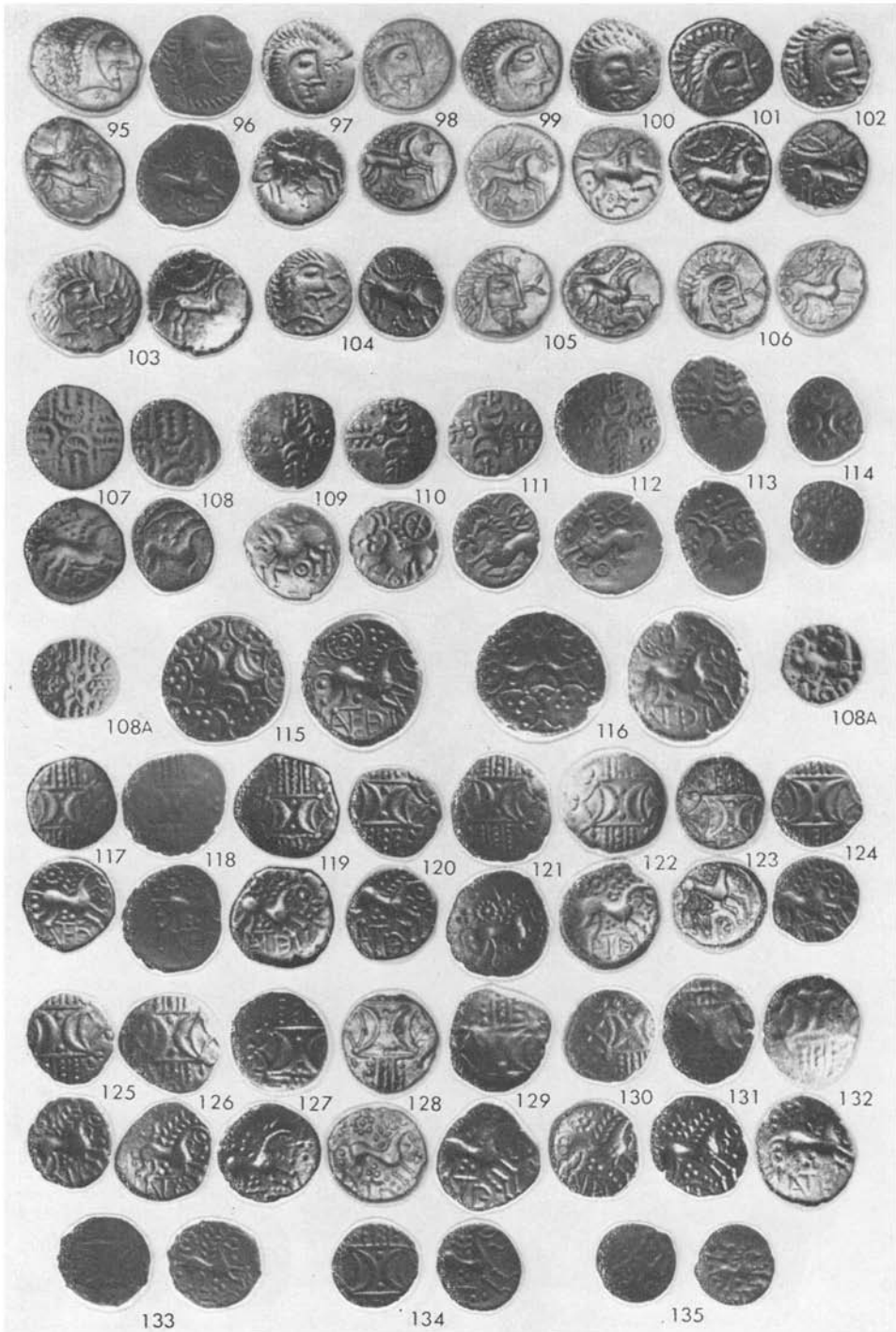
PLATE III



ICENIAN COINS, Nos. 55-94 (1)  
See p. 27 f. for description.

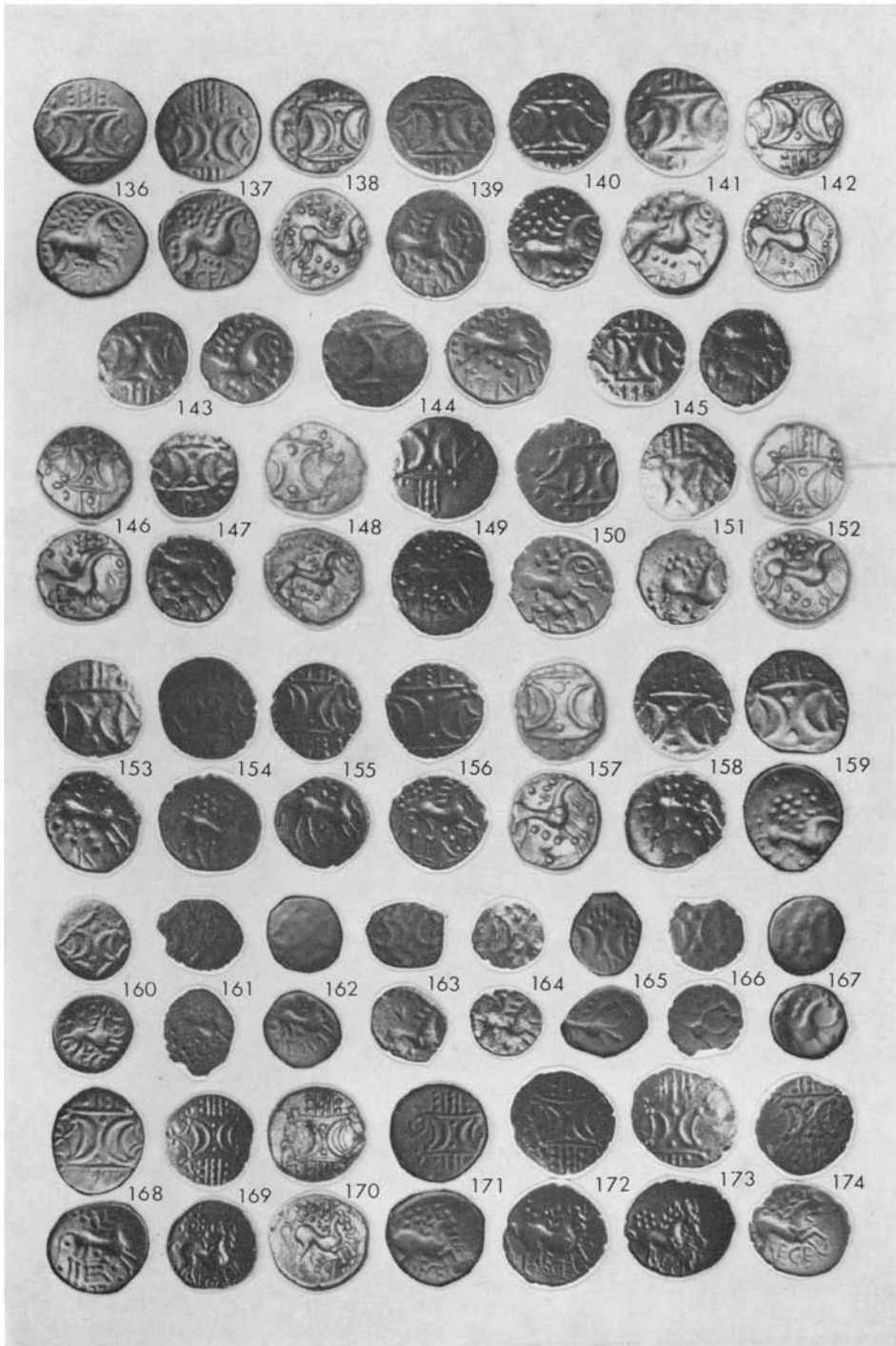


PLATE IV



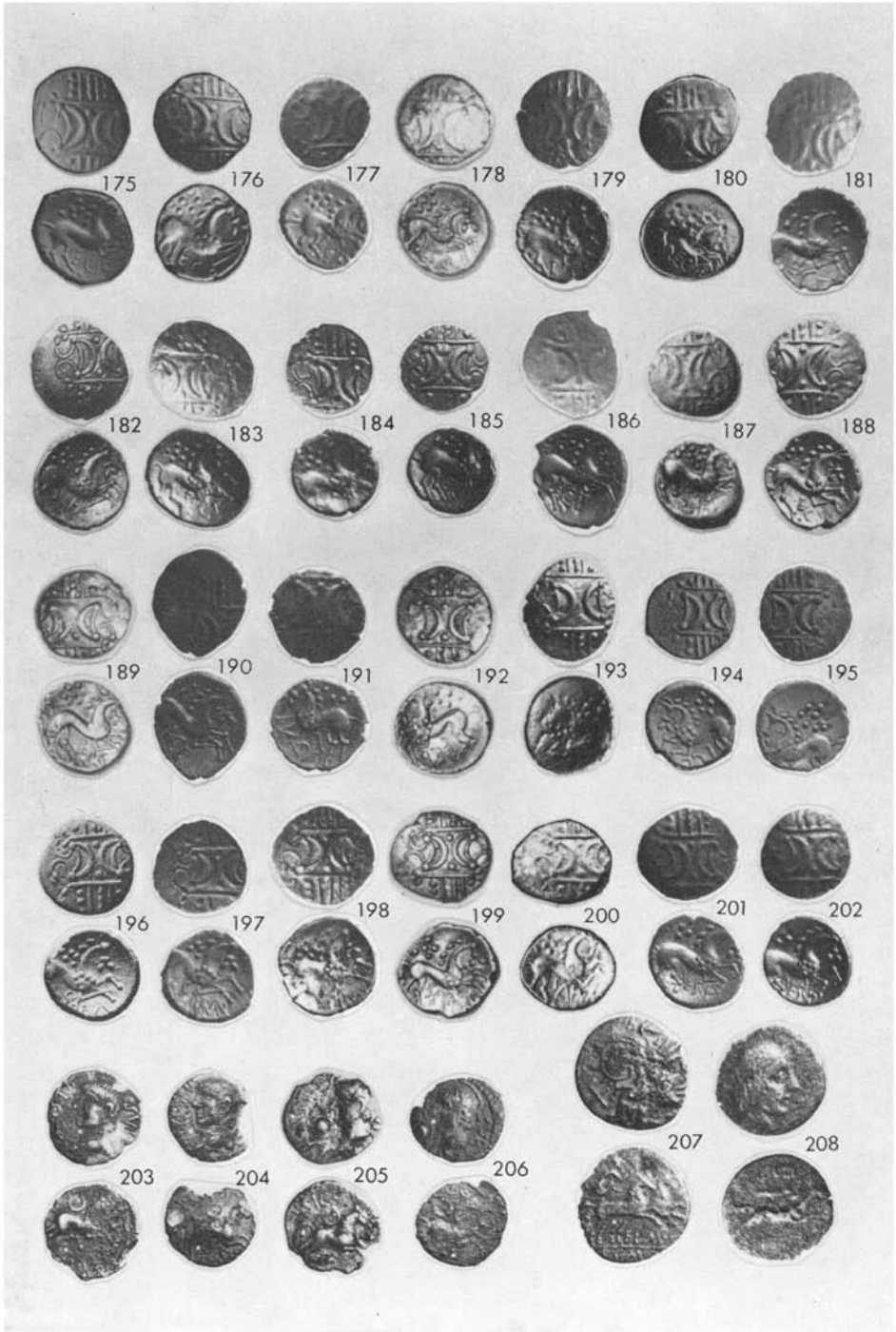
ICENIAN COINS. Nos. 95-135 (1/2)  
See p. 29 f. for description.

PLATE V



ICENIAN COINS, Nos. 136-174 (1)  
See pp. 30-32 for description.

PLATE VI



ICENIAN COINS. Nos. 175-208 (1)  
See p. 32 f. for description.







(Photo: T. B. White)

B

CANTERBURY THEATRE  
Walls A (foreground), B and F (behind vertical foot-scale)  
(pp. 87-90).



(Photo: T. B. White)

A

CANTERBURY THEATRE  
Trench across Walls F (foreground), B and A (beneath horizontal  
foot-scale) (pp. 87-90).





(Photo: T. B. White)

A

CANTERBURY THEATRE  
Wall E (looking NW.) cut by Walls D (left) and C (right) (p. 89).

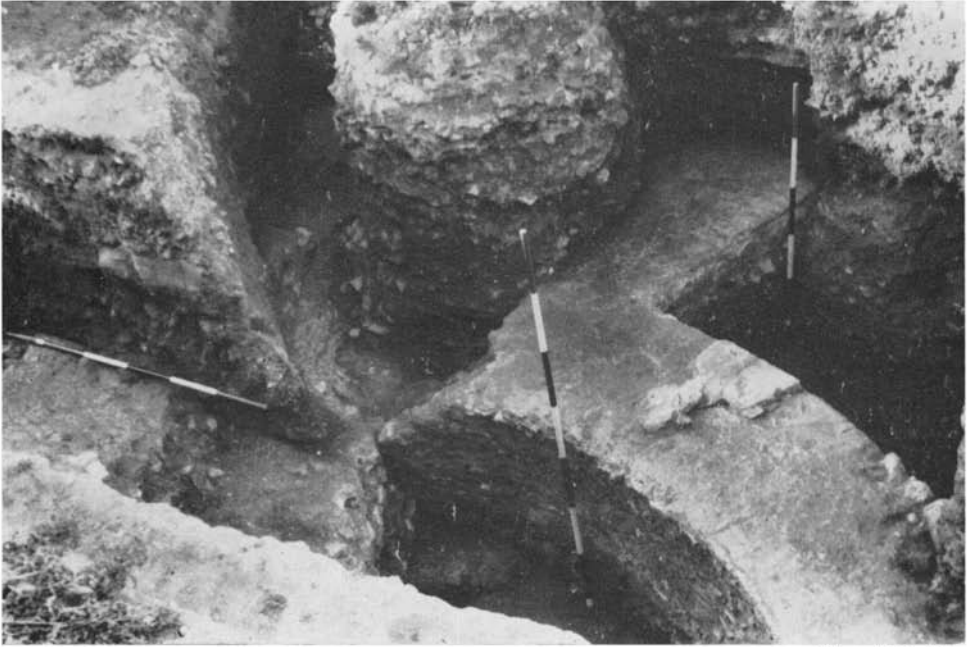


(Photo: T. B. White)

B

CANTERBURY THEATRE  
The corridor with surviving extent of *opus signinum* floor and Wall A  
on right (p. 85).

PLATE X



(Photo: T. B. White)

A

CANTERBURY THEATRE  
Junction of Walls F and B, looking south (p. 90).



(Photo: T. B. White)

B

CANTERBURY THEATRE  
Wall E cut by Walls C (left) and D (right) (p. 89).



(Photo: T. B. White)

A  
CANTERBURY THEATRE  
Part of Wall A in cellar beneath Slatter's Restaurant (p. 91).



(Photo: T. B. White)

B  
CANTERBURY THEATRE  
The corridor looking SW.



PLATE XII



(Photo: T. B. White)

B

CANTERBURY THEATRE

Wall A entering cellar of No. 23 Watling Street, looking SW.  
(p. 91).



(Photo: T. B. White)

A

CANTERBURY THEATRE

Triple tile-course on Wall B, Wall F in background  
(p. 90).

PLATE XIII



B



C

NEAL, ROMAN VILLA AT BOXMOOR



A

A. Detail of wall construction of timber building showing notched tenon (p. 159).

B & C. Lead Seal with imperial head and warrior reverse (p. 162) (?).

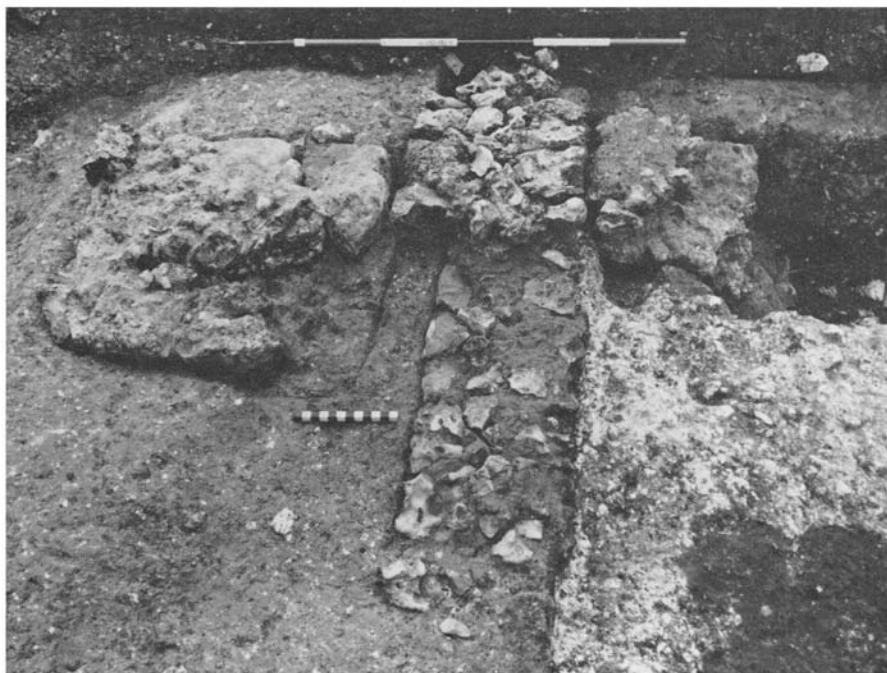
BRITANNIA, VOL. I (1970)

PLATE XIV



A

View north of Rooms 1-4. Southern corridor, cut by buttresses, in right foreground.

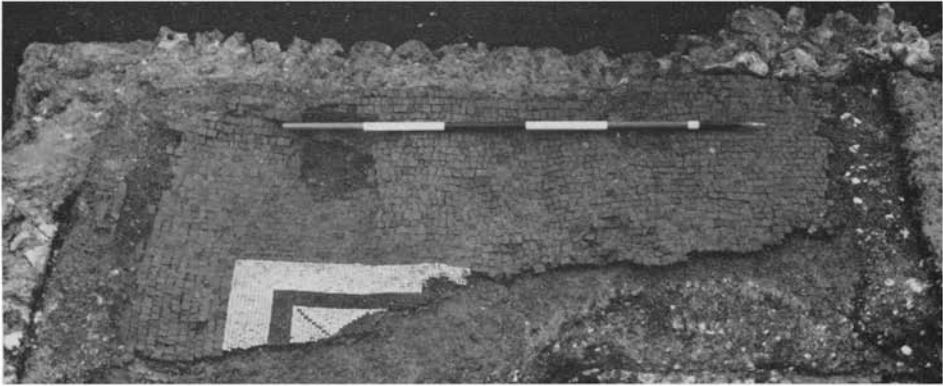


B

View west of south wall of Room 7 showing chalk foundation of Period 2, narrow flint wall of Period 3, widened wall of Period 4, butters of Period 5 (phase A) and wall, between Rooms 5 and 7 of Period 5 (phase B).



PLATE XV



A

View west of mosaic fragment in Room 2.



B

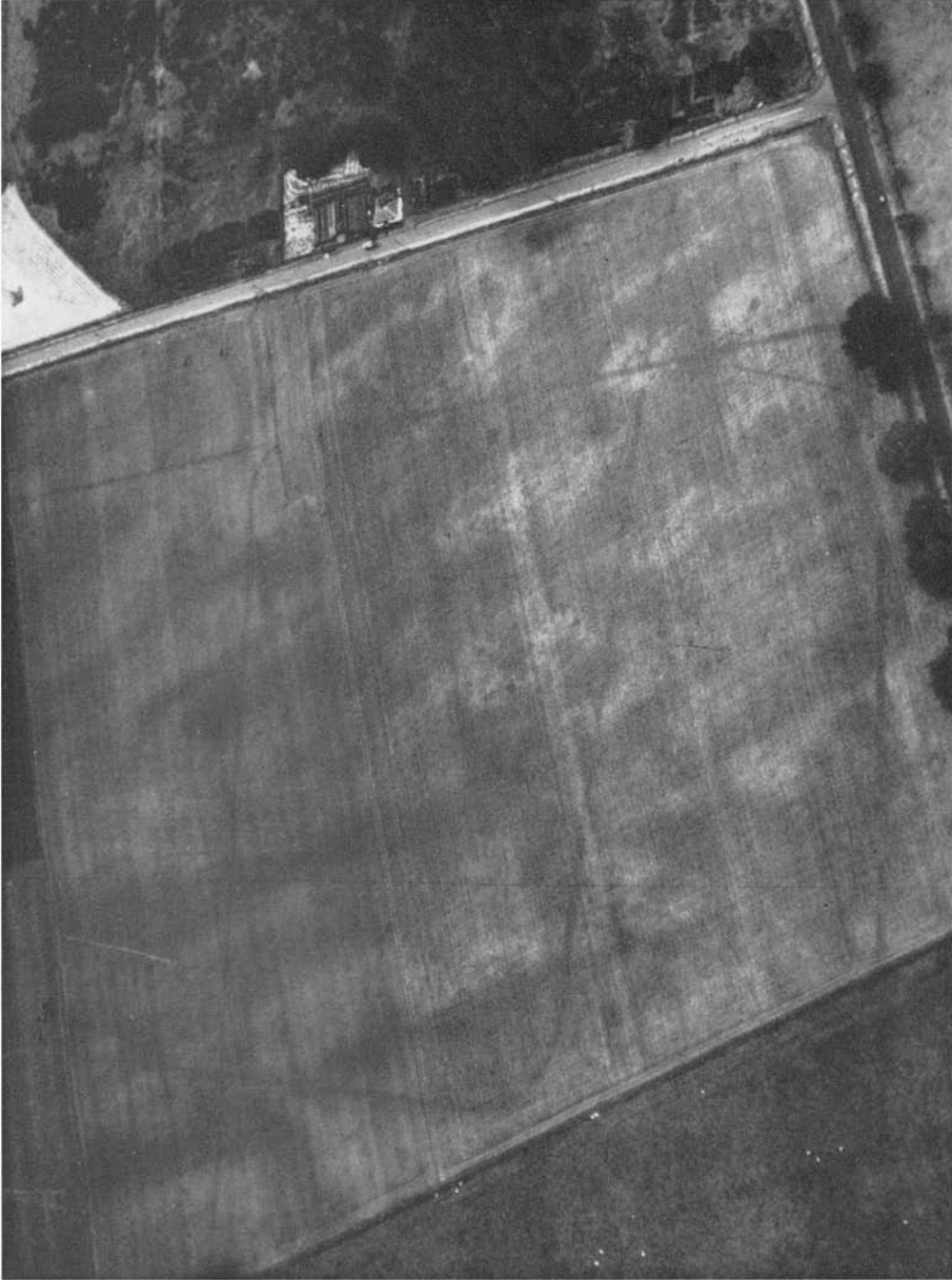
Periods 4 and 5 walls constructed over filling of hypocaust in Room 10.



C

View east of hypocaust in Room 8.

PLATE XVI



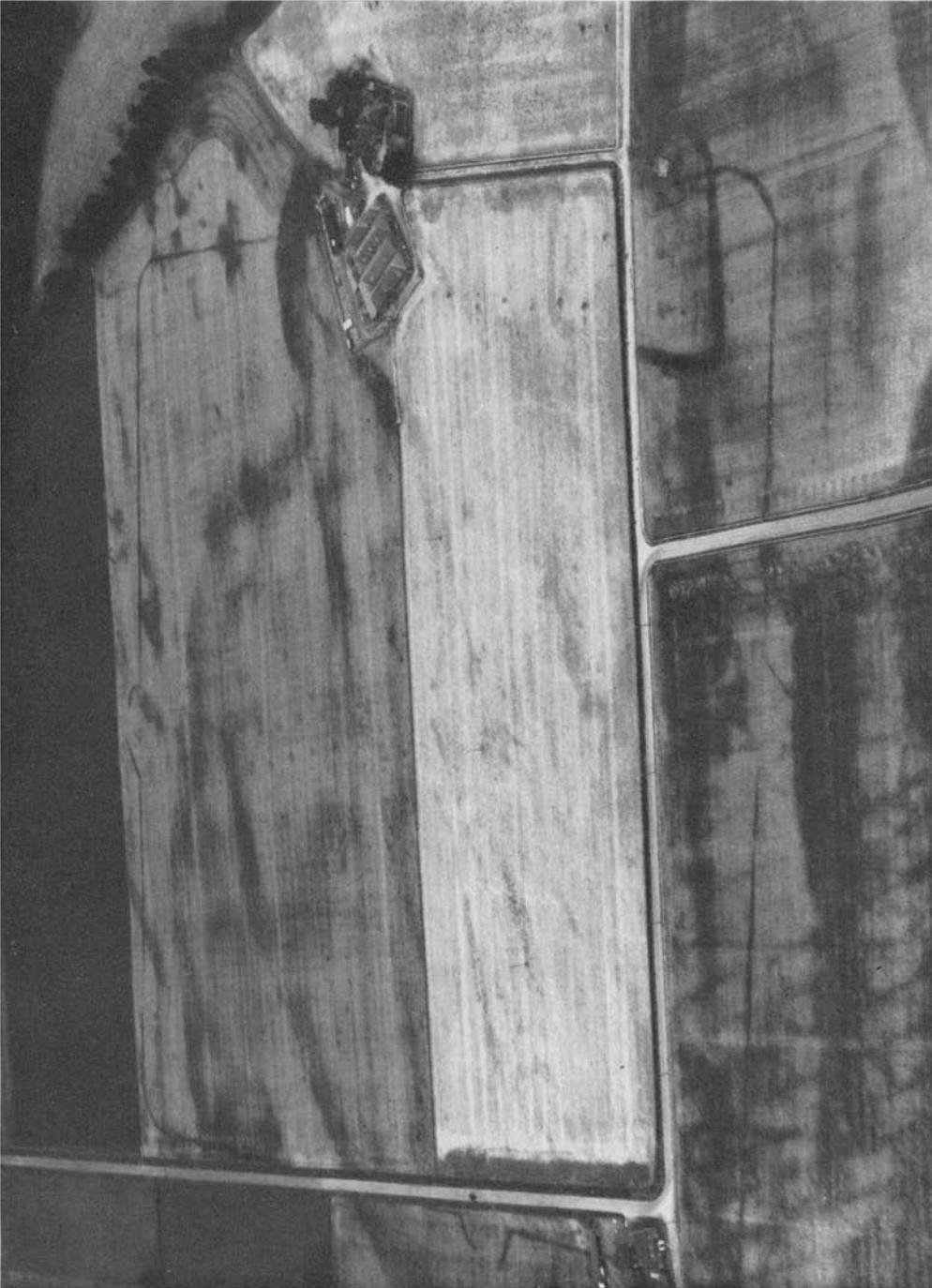
Ardoch, Perthshire; field 320, looking north-west. The ditch on the north side of both 13- and 30-acre camps appears as a crop mark from top to bottom of the photograph to left of a side-road and nearly parallel to it. The east and west ditches of the 13-acre camp extend from this mark towards the left of the photograph. Of the 63-acre camp, part of both east and south sides and the rounded angle between them can be clearly distinguished. The west side of the 120-acre camp is visible above a cottage as an earthwork on the bracken-covered slope of Black Hill, but hardly appears in the arable field.

*Photo: Cambridge University Collection, copyright reserved.*

BRITANNIA, VOL. I (1970)

ST. JOSEPH, CAMPS AT ARDOCH, STRACATHRO AND YTHAN WELLS

PLATE XVII



Stracathro, Angus, looking north-west. All four sides of the camp and three of the gates appear. The excavated gate, the *porta decumana*, lies furthest from the camera.

*Photo: Cambridge University Collection, copyright reserved.*

ST. JOSEPH, CAMPS AT ARDOCH, STRACATHRO AND YTHAN WELLS

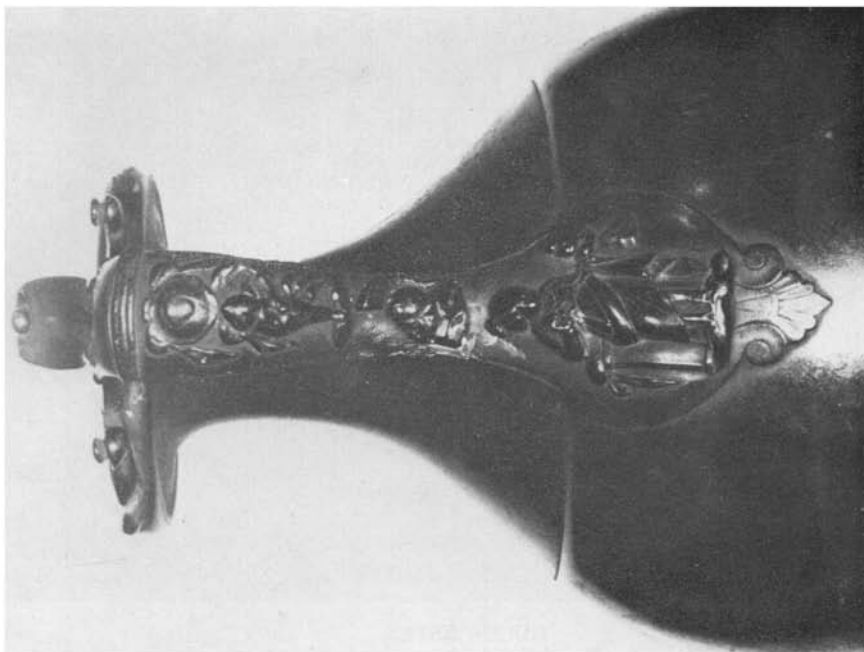
BRITANNIA, VOL. I (1970)





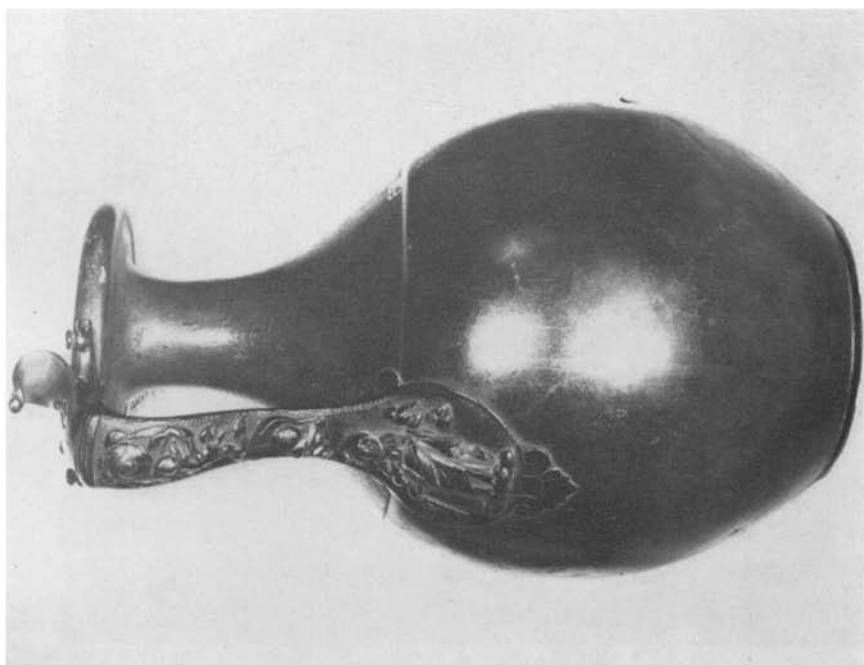
DISTANCE SLAB OF THE TWENTIETH LEGION FROM THE ANTONINE WALL ON HUTCHESON HILL, 1969

(Dimensions: 0·97 by 0·76 m; pp. 212, 309; see also PL. xxxviii.)



B  
DETAIL OF LESMAHAGOW JUG (3)

ROBERTSON, ROMAN FINDS IN SCOTLAND



A  
BRONZE JUG FROM LESMAHAGOW, LANARKSHIRE (3) (p. 205)

BRITANNIA, VOL. I (1870)

PLATE XX



A

CIRENCESTER

Face of wall and footings by section 'a-b' (p. 231).

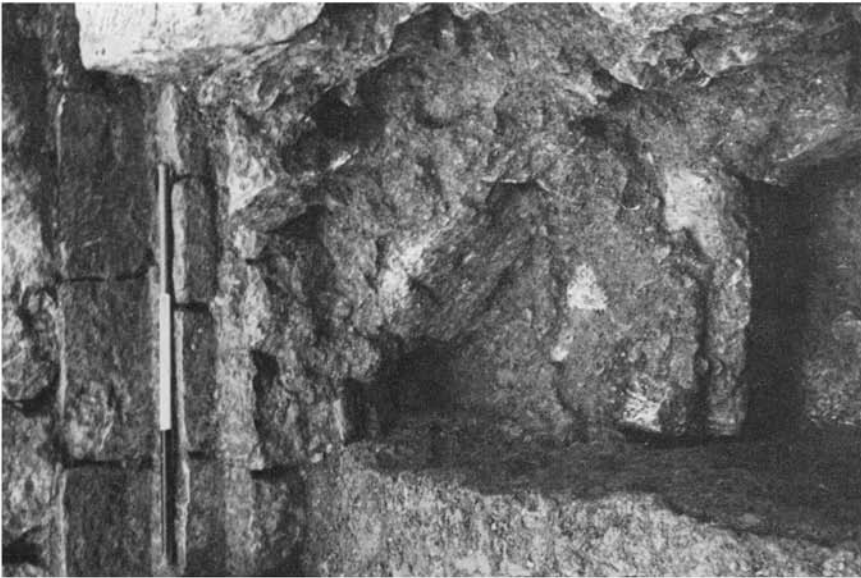


B

CIRENCESTER

End of narrow wall footings in berm hole 'n' (p. 233).

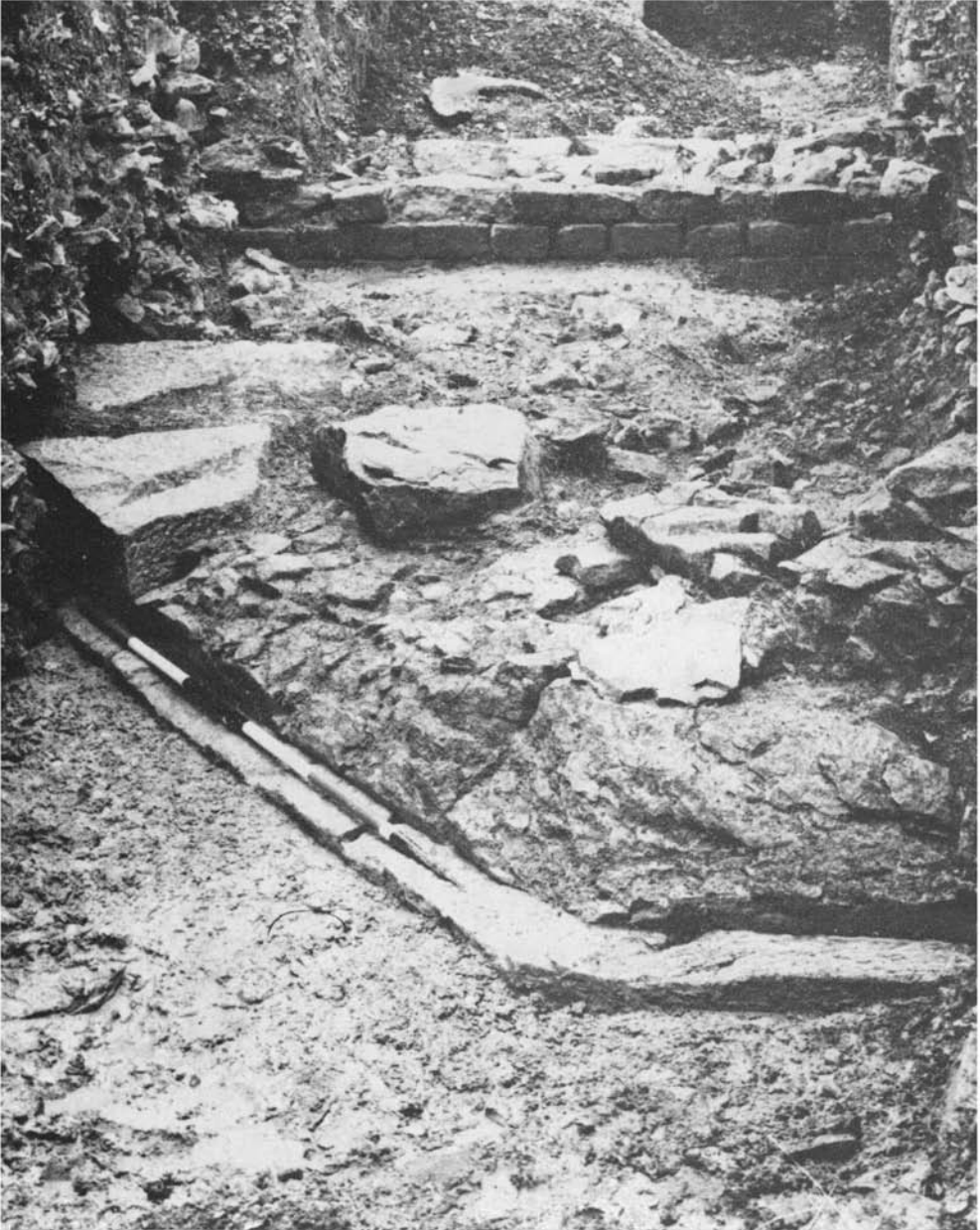




**A**  
**CIRENCESTER**  
Bastion 3, south side (p. 239).  
BRITANNIA, VOL. I (1970)



**B**  
**CIRENCESTER**  
Bastion 4, south side (p. 237).  
CULLEN, CIRENCESTER: RESTORATION OF TOWN WALL.



CIRENCESTER  
Bastion excavated in 1965 on site Q (p. 238).



(Photo: M. Henig)

A. INTAGLIO 1A (p. 250) (3/4)  
Theseus: London.



(Photo: Ashmolean Museum)

B. CAST OF INTAGLIO 1A



(Photo: Ashmolean Museum)

C. CAST OF INTAGLIO 1B (p. 251)  
(3/4) Theseus: Corbridge.



(Drawing by K. F. Hartley,  
reproduced by permission of the Chester Archaeological Society)

D. INTAGLIO 2A (p. 254) (3/4)  
Achilles: Heronbridge.





(Photo: M. Henig)

A. INTAGLIO 2B IN SILVER RING (p. 254) (3)  
Achilles: found near Chalgrave.



(Photo: Ashmolean Museum)

B. CAST OF INTAGLIO 2B



(Photo: Ashmolean Museum)

D. CAST OF INTAGLIO 2C (3)



C. INTAGLIO 2C IN SILVER RING (p. 254) (3)  
Achilles: Caerleon.

(Photo: by permission of the National Museum of Wales)



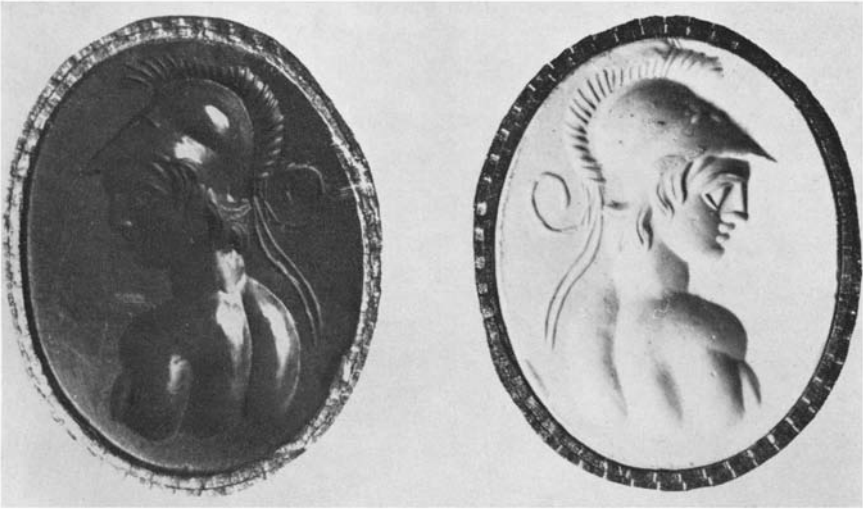
(Photo by permission of the National Museum of Wales)

F. CAMEO (p. 257) (3)  
Youthful Hercules: Caerleon.



(Photo: Ashmolean Museum)

E. CAST OF INTAGLIO 2D (p. 254) (3)  
Achilles: Corbridge.



(Photo: by permission of the National Museum of Wales)

A

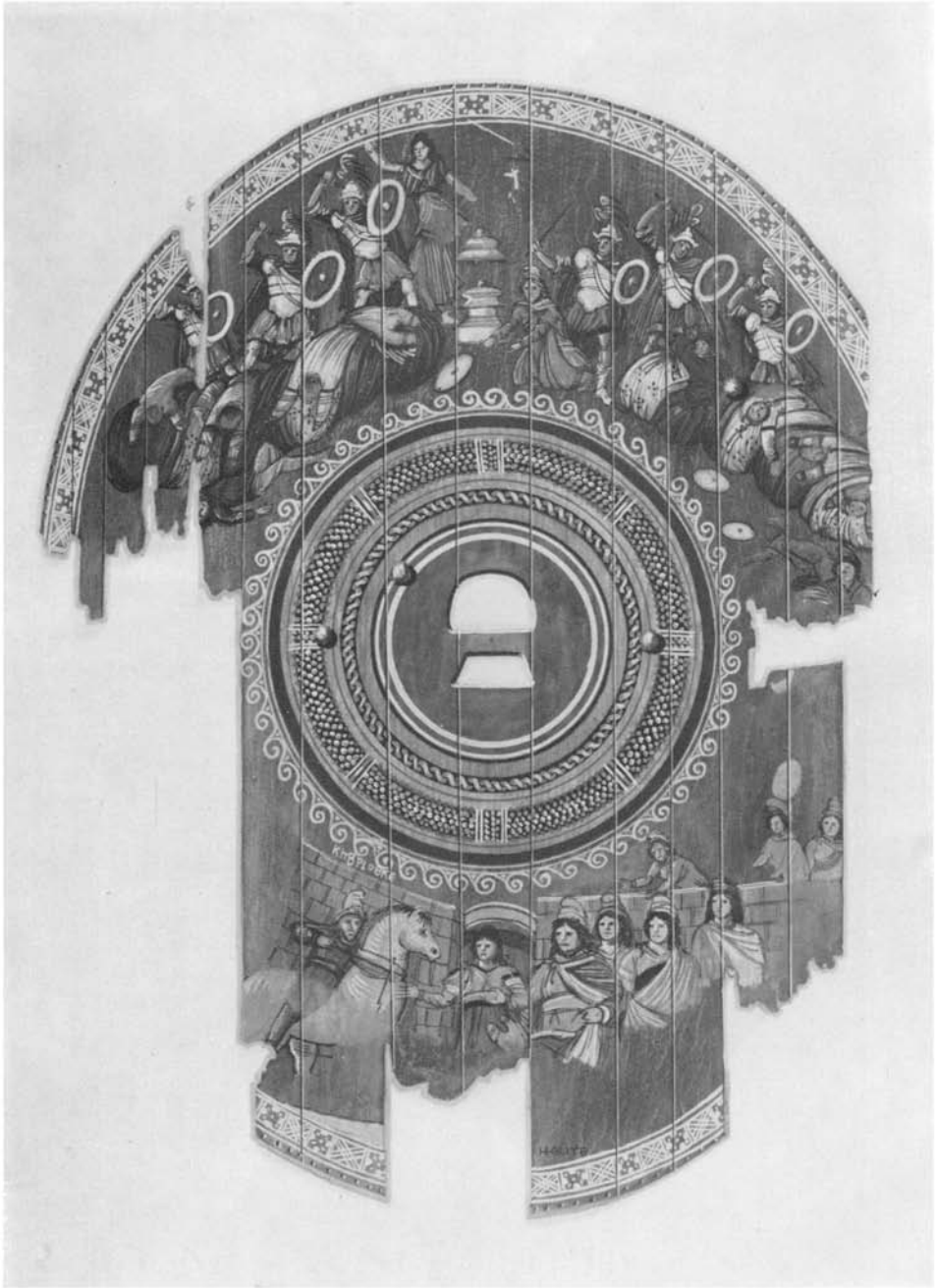
INTAGLIO AND CAST DEPICTING ALEXANDER THE GREAT: CAERLEON (p. 264) (3)



(Photo: courtesy of Saalburgmuseum)

B

RECONSTRUCTION OF WALL-PAINTING FROM ECHZELL (p. 261)  
Height 2.20 m. Second century A.D.



*(Photo: by courtesy of Dura Europos Publications)*

**PAINTED WOODEN SHIELD (SHIELD 1) FROM DURA EUROPOS**  
Reconstructed by Mr. H. J. Gute. Dimensions 1.07 by 0.95 m. Third century A.D. (p. 260).





(Photo: R. Wilkins)

A

INTAGLIO (p. 256) (3)  
Dromedes and the Palladium: Verulamium.



(Photo: R. Wilkins)

B

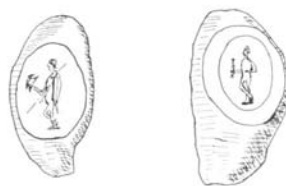
CAST OF THE SAME



(Photo by permission of the National Museum of Wales)

C

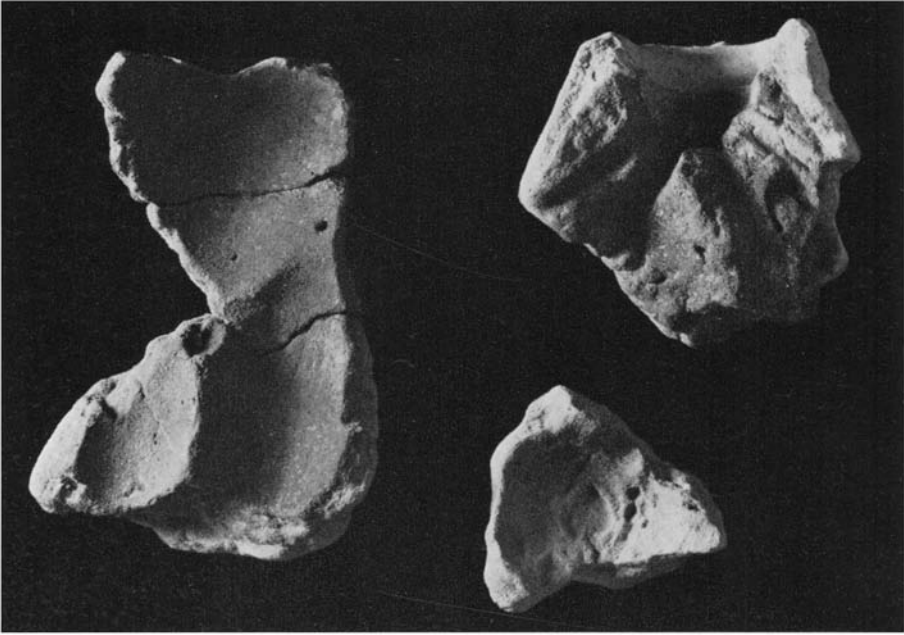
PLASMA INTAGLIO IN GOLD RING (p. 255) (4).  
The Dioscuri each carrying spear and sword: Pentre, Rhondda.



(After *Archaeologia Aeliana*<sup>s</sup> xxxix, pl. 5, by permission)

D

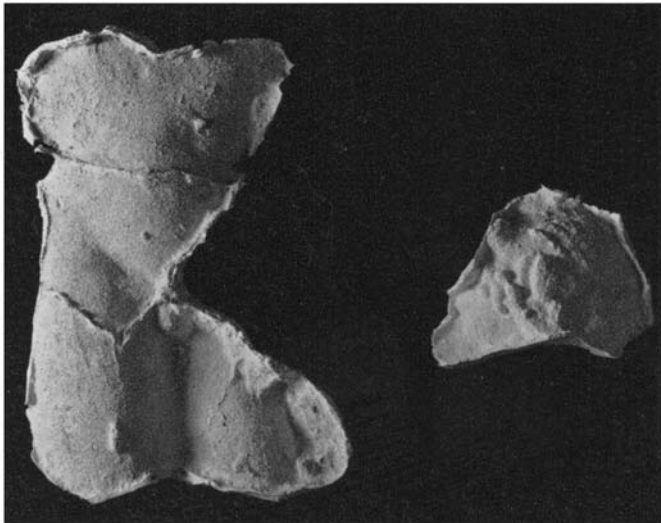
INTAGLIO 2D (p. 254) IN SILVER RING (left)  
AND 1B (p. 251) IN IRON RING (right) (5)



(Photo: R. Wilkins)

A

MOULD FOR BRONZE STATUETTE FROM GESTINGTHORPE, ESSEX (p. 266) ( $\frac{1}{2}$ )



(Photo: R. Wilkins)

B

LATEX-RUBBER CASTS FROM THE MOULDS

PLATE XXIX



A



B



C

ROMANO-BRITISH VOTIVE RELIEF FROM WITHAM, ESSEX (p. 267) ( $\frac{1}{2}$ )

(Photos: R. Wilkins)



PLATE XXX



*Photo: National Museum of Wales, copyright reserved*

- A. Legionary *principia*, Caerleon (*Isca*), Mon.: enclosure, perhaps for an altar, set up in the cross-hall probably *c.* A.D. 180, showing site of entrance-gates (left foreground) and underlying SE. stercobate (beneath ranging-pole), looking E. (p. 272).



*Photo: Eleanor Muers*

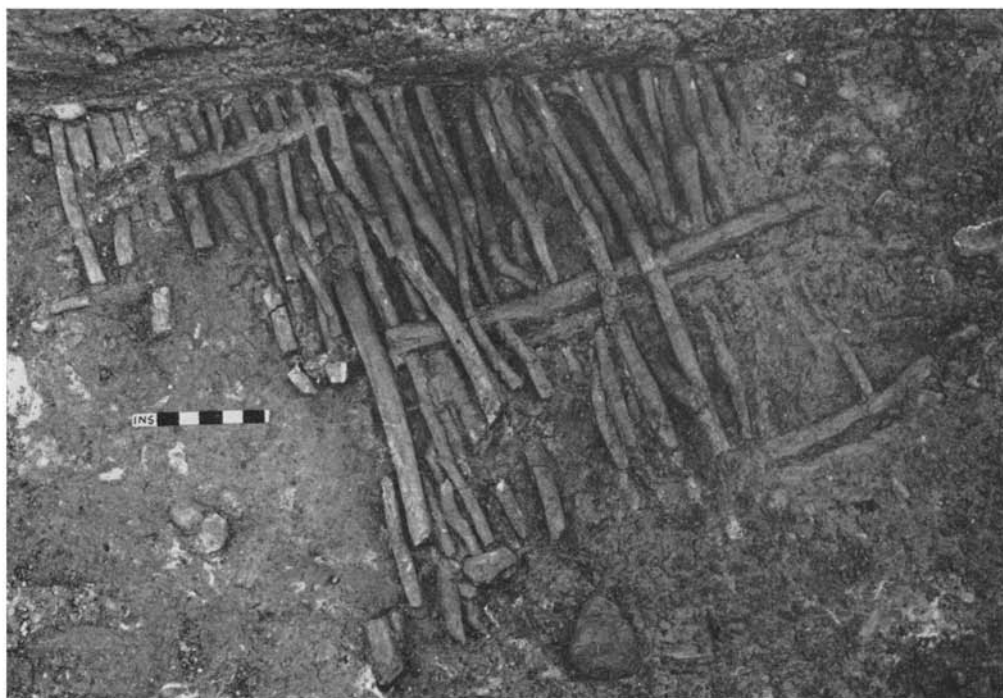
- B. Usk, Mon.: large timber granaries, with foundation-slots partly excavated to show post-holes, looking N. (p. 273).



*Photo: D. W. Harding*

Holme House, Manfield, Yorks.: circular building at the centre of ditched enclosure (p. 279).

PLATE XXXII



*Photo: G. D. B. Jones*

A. Ribchester (*Bremetennacum*), Lancs.: wattle walling from house of Flavian-Trajanic date in the *vicus* (p. 281).



*Photo: F. H. Thompson, by courtesy of the Ministry of Public Building and Works*

B. Legionary amphitheatre, Chester (*Deva*): the main N. entrance, looking N. (p. 282).



PLATE XXXIII



*Photo: Leicester Museum*

- A. Leicester (*Ratae Coritanorum*): aisled building, probably a *mithraeum*, looking W.; the cobbled surface in the S. aisle is earlier than the building (p. 286).



*Photo: Guildhall Museum*

- B. Huggin Hill, London (*Londinium*): part of the Flavian Baths, looking S., showing drains for carrying spring-water beneath the building (A), room with secondary hypocaust (B), and door to W. part of the Baths (C) (p. 292).

PLATE XXXIV



*Photo: Mrs. K. F. Hartley, by courtesy of the Ministry of Public Building and Works*

A. Mancetter, Warwicks.: glass furnace (right) and kiln of uncertain purpose, possibly for pottery (left) (p. 286).



*Photo: J. P. Wild*

B. Stibbington, Hunts.: Kiln W, looking W., showing chamber constructed of pre-fired blocks (p. 287).

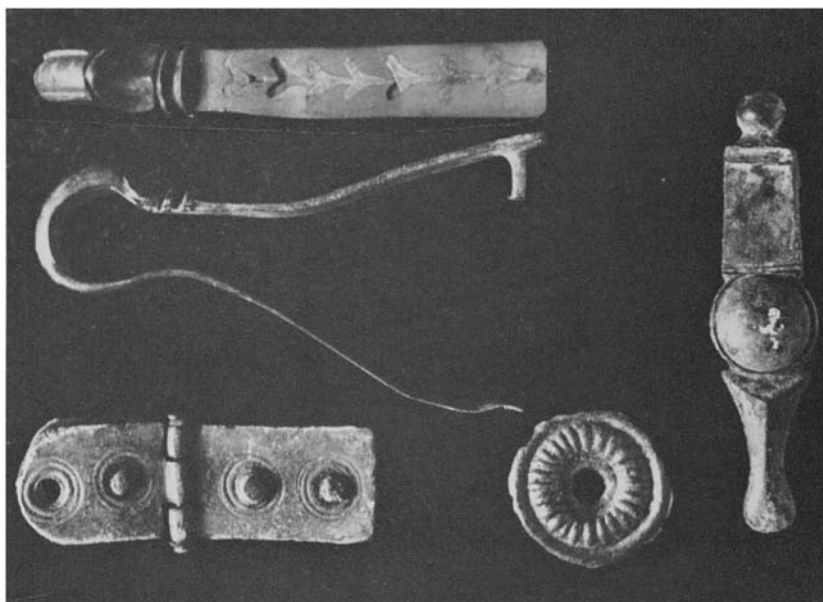
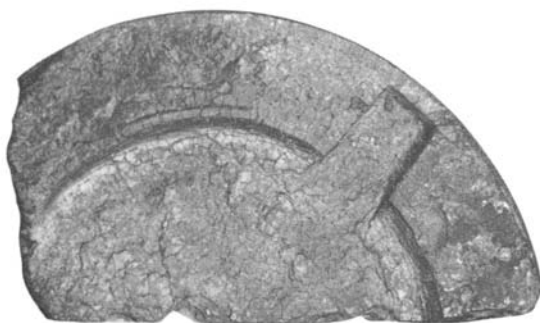


Photo: L. Atcock

A. South Cadbury, Somerset: military bronzes (top left with silver inlay) (4) (p. 297).



B



C



D

B. Chichester (*Noviomagus*), Sussex: silver minim of Verica, obverse and reverse (?) (p. 302).

Photo: Guildhall Museum

C. Westham, Sussex: fragment of shale table-top (4) (p. 303).

Photo: By courtesy of the Trustees of the British Museum, copyright reserved

D. Yatton, Somerset: bronze figurine (4) (p. 296).

Photo: Ministry of Public Building and Works. Crown copyright reserved





Photo: by courtesy of the Court of the University of Glasgow, copyright reserved      Photo: by courtesy of the National Museum of Wales, copyright reserved

A. Caerleon (*Isca*), Mon.: slab from cross-hall of *principia* (↓) (p. 306).

B. Old Kilpatrick, Dunbartons.: altar (↓) (p. 310).

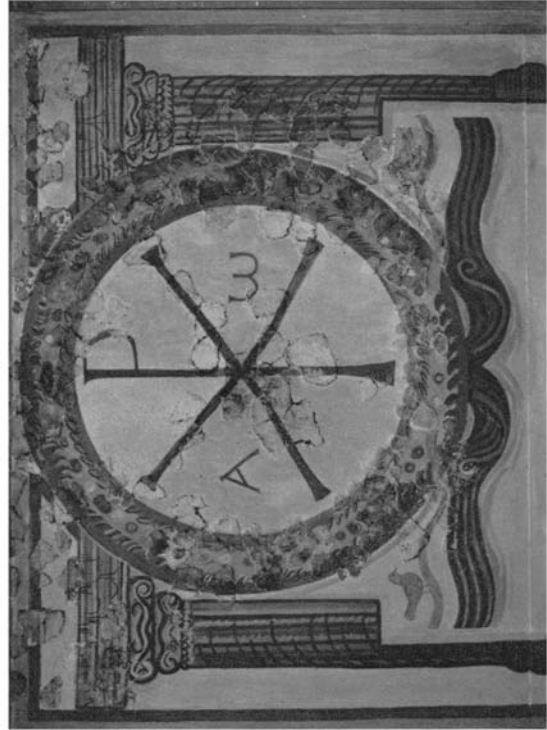


Photo: by courtesy of the R.C.H.M (England). Crown copyright

C. York (*Eboracum*): stone in W. wall of S. transept of Norman minster (↓) (p. 13 f.)



A. York (*Eboracum*): tombstone re-used on Anglo-Saxon grave ( $\frac{1}{2}$ ) (p. 308).  
*Photo: by courtesy of the R.C.H.M (England), Crown copyright*



B. Lullingstone, Kent: reconstruction of chi-rho painted on wall-plaster of fourth-century villa ( $\frac{1}{4}$ ) (p. 312).  
*Photo: by courtesy of the Trustees of the British Museum, copyright reserved*



*Photo: by courtesy of the Court of the University of Glasgow, copyright reserved*

Hutcheson Hill, Dunbartonshire: detail of central panel of distance-slab (3).  
(p. 309: cf. PL. XVIII).