

ARTICLES

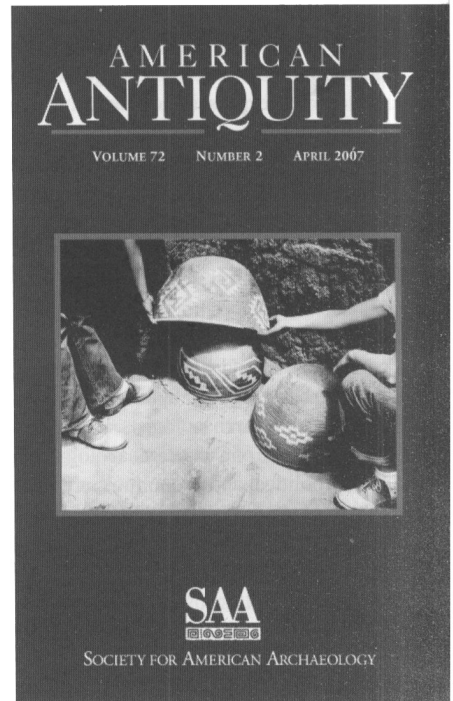
- 196 Credit Where Credit Is Due: The History of the Chumash
Oceangoing Plank Canoe
Jeanne E. Arnold
- 210 Performing the Feast: Visual Display and Suprahousehold
Commensalism in the Puebloan
Southwest
Barbara J. Mills
- 241 Empirical Bayesian Methods for Archaeological Survey Data:
An Application from the
Mesa Verde Region
Scott G. Ortman, Mark D. Varien, and T. Lee Gripp
- 273 Historical Ecology in the Mesa Verde Region: Results from
the Village Ecodynamics Project
*Mark D. Varien, Scott G. Ortman, Timothy A. Kohler, Donna
M. Glowacki, and C. David Johnson*

REPORTS

- 301 The Stable- and Radio-Isotope Chemistry of Western Basket-
maker Burials: Implications for Early Puebloan Diets and Origins
Joan Brenner Coltrain, Joel C. Janetski, and Shawn W. Carlyle
- 322 Archaeological Survey Design, Units of Observation, and the
Characterization of Regional
Variability
Alan P. Sullivan, III, Philip B. Mink, II, and Patrick M. Uphus
- 334 Bifacial Cores and Flake Production Efficiency: An Experimental Test of Technological Assumptions
Mary M. Prasciunas

COMMENTS

- 349 Man the Showoff? Or the Ascendance of a Just-So-Story: A Comment on Recent Applications of Costly Sig-
naling Theory in American Archaeology
Brian F. Codding and Terry L. Jones
- 358 Costly Signaling and the Ascendance of No-Can-Do Archaeology: A Reply to Codding and Jones
Kelly R. McGuire, William R. Hildebrandt, and Kimberly L. Carpenter
- 366 Bonfire Shelter: A Jumping Off Point for Comments for Byerly et al.
Leland C. Bement
- 373 A Further Assessment of Paleoindian Site-Use at Bonfire Shelter
Ryan M. Byerly, Judith R. Cooper, David J. Meltzer, Matthew E. Hill, and Jason M. LaBelle



NOTICE TO AUTHORS

Latin American Antiquity publishes original papers on the archaeology, prehistory, and ethnohistory of Latin America, i.e., Mesoamerica, Central America, and South America, together with culturally affiliated adjacent regions. Papers may also treat more general theoretical and methodological issues with relevance to Latin America. Authors submit manuscripts to the editor for consideration as ARTICLES or REPORTS in English, Spanish, or Portuguese. Authors should submit an original and three copies of their manuscripts (including all figures, tables, references, and notes), along with an abstract in both English and Spanish. Detailed information on policy, style, and technical matters of manuscript preparation is given in English and in Spanish in the "Editorial Policy, Information for Authors, and Style Guide for *American Antiquity* and *Latin American Antiquity*," available through the World Wide Web at <http://www.saa.org/Publications/StyleGuide/styframe.html>. For additional information, updates, or clarification, consult the managing editor at the SAA office in Washington, D.C.

BOARD OF DIRECTORS OF THE SOCIETY FOR AMERICAN ARCHAEOLOGY

Officers

President: DEAN SNOW, Pennsylvania State University, 409 Carpenter Bldg, Department Of Anthropology University Park, PA 16802-3404

Secretary: MICHAEL A. GLASSOW, University of California-Santa Barbara, Department of Anthropology, Santa Barbara, CA 93106

Treasurer: SUSAN M. CHANDLER, Alpine Arch Consultants Inc, PO Box 2075, 900 South Townsend Ave. Montrose, CO 81402-2075

Treasurer-elect: PAUL D. WELCH, Southern Illinois University, Department of Anthropology MC 4502, 3521 Faner Hall, Carbondale, IL 62901-4328

Board Members-at-Large

CHRISTOPHER D. DORE, Statistical Research, Inc., PO Box 31865, 6099 E. Speedway Blvd., Tucson, AZ 85751

JONATHAN DRIVER, Simon Fraser University, Department Of Archaeology, 8888 University Drive, Burnaby, BC V5A -1S6, Canada

KATHRYN KAMP, Grinnell College, Department of Anthropology, Grinnell, IA 50112

DOROTHY T. LIPPERT, National Museum of Natural History, NMNH Repatriation Office MRC-138, PO Box 37012, Washington, DC 20013-7012

EMILY MCCLUNG DE TAPIA, Inst de Investigaciones Antro, UNAM/CU Circuito Exterior S/n, Coyoacan, Mexico DF, DIF 04510 Mexico

SCOTT E. SIMMONS, Department of Anthropology, University of North Carolina Wilmington, Wilmington, NC 28403

Ex-Officio Board Member

TOBI A. BRIMSEK, Executive Director, Society for American Archaeology, 900 Second St. NE, Suite 12, Washington, DC 20002-3560

ARTICLES

- 123 In the Aftermath of Teotihuacan: Epiclassic Pottery Production and Distribution in the Teotihuacan Valley, Mexico
Destiny Crider, Deborah L. Nichols, Hector Neff, and Michael D. Glascock
- 145 Ancient DNA and Genetic Continuity in the South Central Andes
Cecil M. Lewis Jr, Jane E. Buikstra, and Anne C. Stone
- 161 Diversity Specialists: Coastal Resource Management and Historical Contingency in the Osmore Desert of Southern Peru
Gregory Zaro
- 181 Multiple Classifications: An Alternative Approach to the Investigation of Maya Ceramics
T. Patrick Culbert and Robert L. Rands

REPORTS

- 191 Defensibility and Settlement Patterns in the Guatemalan Maya Highlands
Greg Borgstede and James R. Mathieu
- 212 A Paleoecological Record from a Late Classic Maya Reservoir in the North Petén
David Wahl, Thomas Schreiner, Roger Byrne, and Richard Hansen

REVIEWS

On the Cover: Small models of wooden boats virtually identical to those currently in use along the Osmore coast have also been found in many Chiribaya burials, especially along the coast at San Gerónimo. (from Diversity Specialists: Coastal Resource Management and Historical Contingency in the Osmore Desert of Southern Peru, by Gregory Zaro, page 173.)

Ⓢ The paper used in this publication meets the requirements of ANSI/NISO Z39.48-1992
(Permanence of Paper).