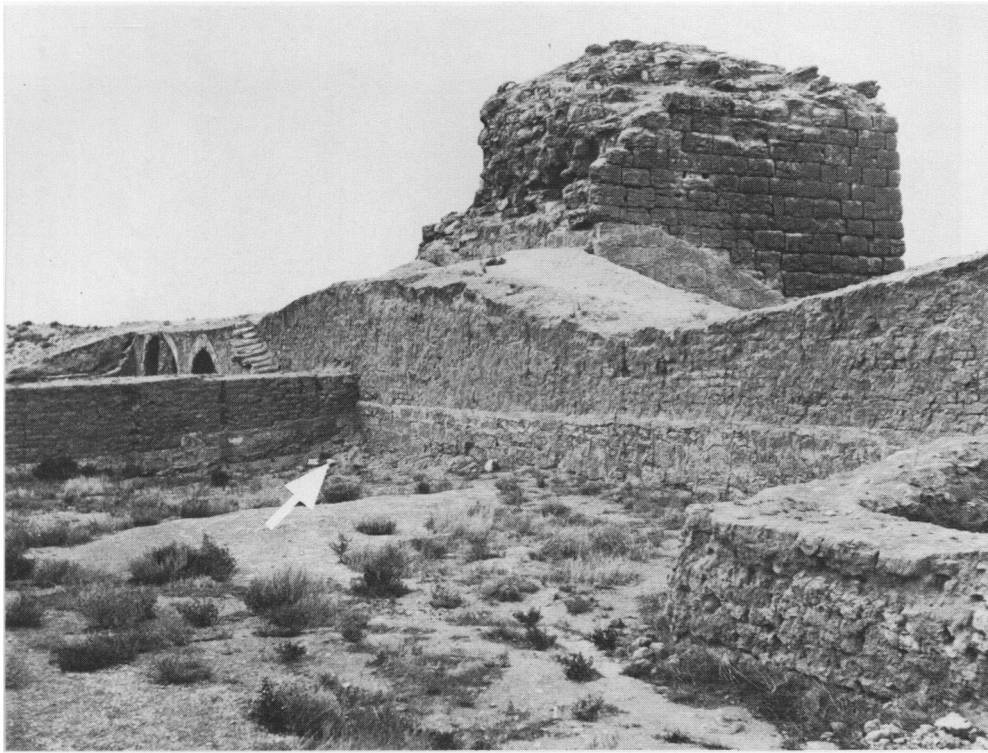
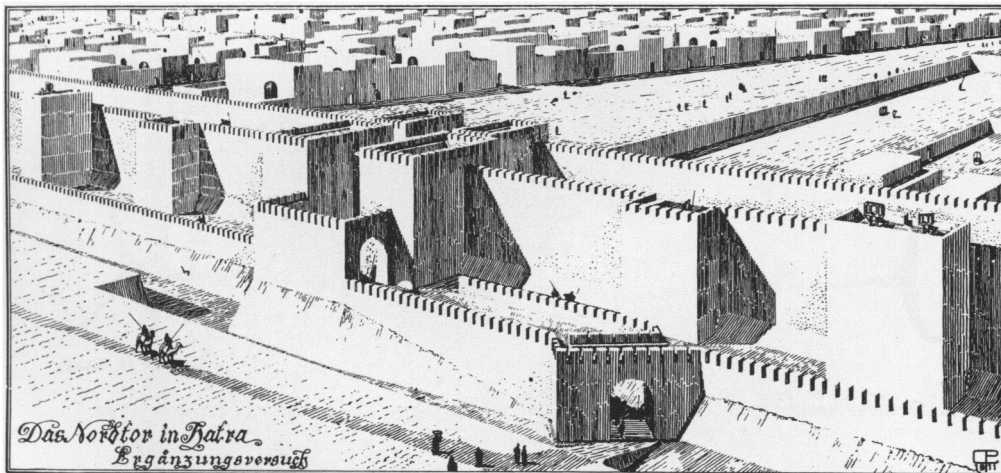


PLATE I



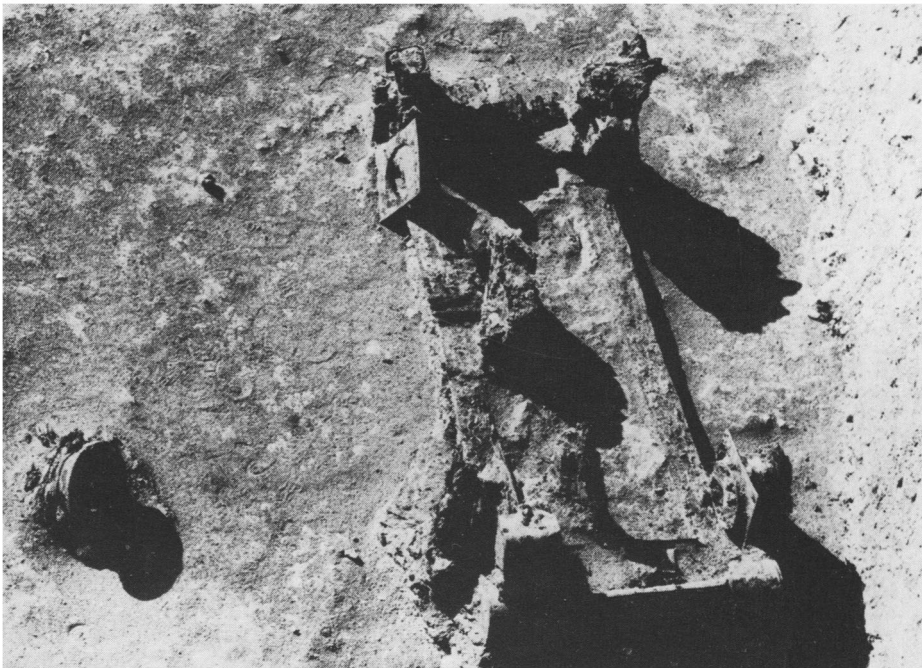
(Photo: D. Baatz)

A. Hatra (p. 3). Main line of defences with tower Andrae XIX near the North Gate seen from the town side (from SE). The find-spot of the ballista is indicated by an arrow. The photo was taken in December 1975.



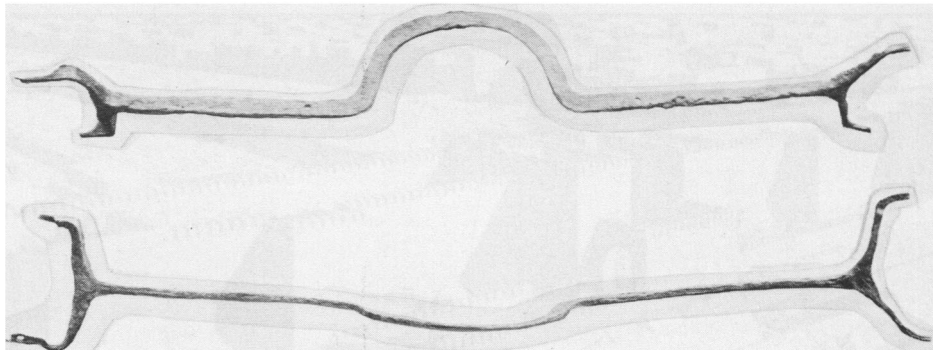
B. Hatra. Reconstruction of the North Gate and adjacent defences seen from NW. To extreme right: Tower Andrae XIX having on top two ballistae. (After W. Andrae, 1912, fig. 26: see p. 4. note 11.)

PLATE II



(Photo: W. I. Al-Salihi, Directorate-General of Antiquities, Baghdad)

A. Hatra. Frame of ballista as found behind the town-wall. Seen from the North, from the top of the main town-wall (p. 4).



(Photo: D. Baatz)

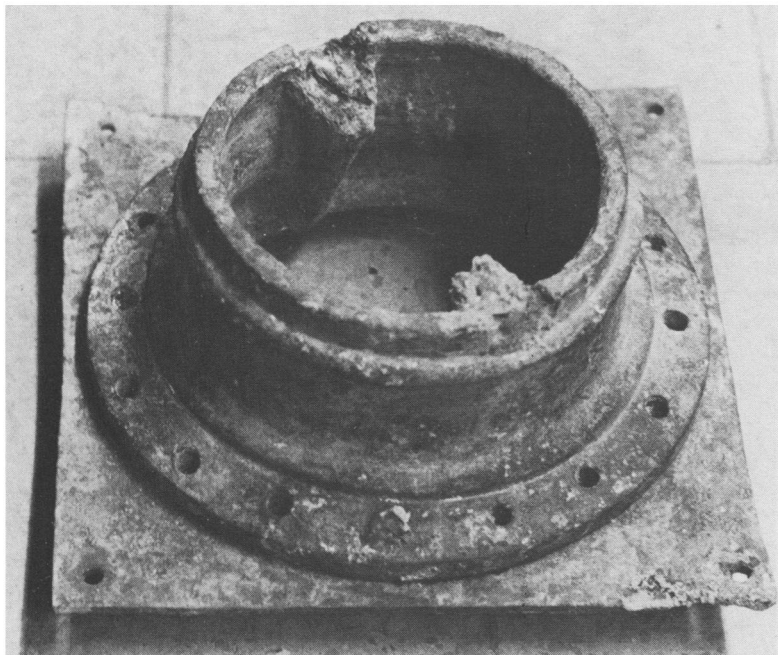
B. Orsova. Arched strut (*καμάριον*) of catapult (pp. 11–12). Scale approximately 1 : 12.

PLATE III



*(Photo: W. I. Al-Salihi, Directorate-General of Antiquities, Baghdad)*

A. Hatra. Iron lever, bronze washer and bronze counter-plate of ballista during excavation (p. 4).



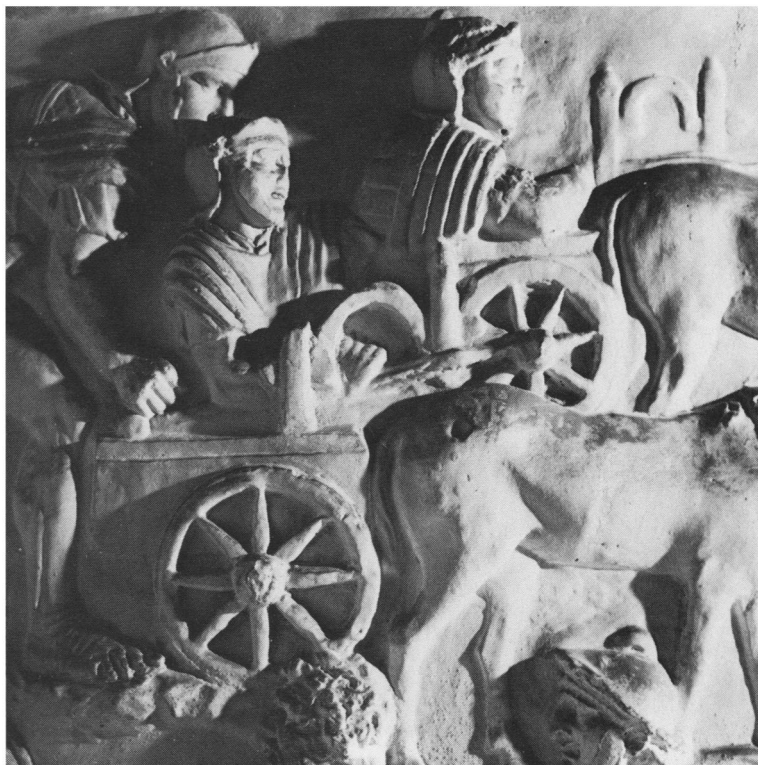
*(Photo: D. Baatz)*

B. Hatra ballista. Bronze washer resting on counter-plate (after cleaning) (p. 5).



(Photo: D. Baatz)

A. Hatra ballista. Bronze corner-fittings mounted on reconstructed timber frame (p. 4).



(Photo: Saalburgmuseum)

B. Trajan's Column, Rome. Two arrow-shooters mounted on carriages (after a plaster cast) (p. 16).

PLATE V



(Photo: D. Baatz)

A. Orsova. Field-frame (*καμβέστριον*) of catapult. Below: the bottom ring seen from the under side (p. 9). Scale approximately 1:3-5.

PLATE VI



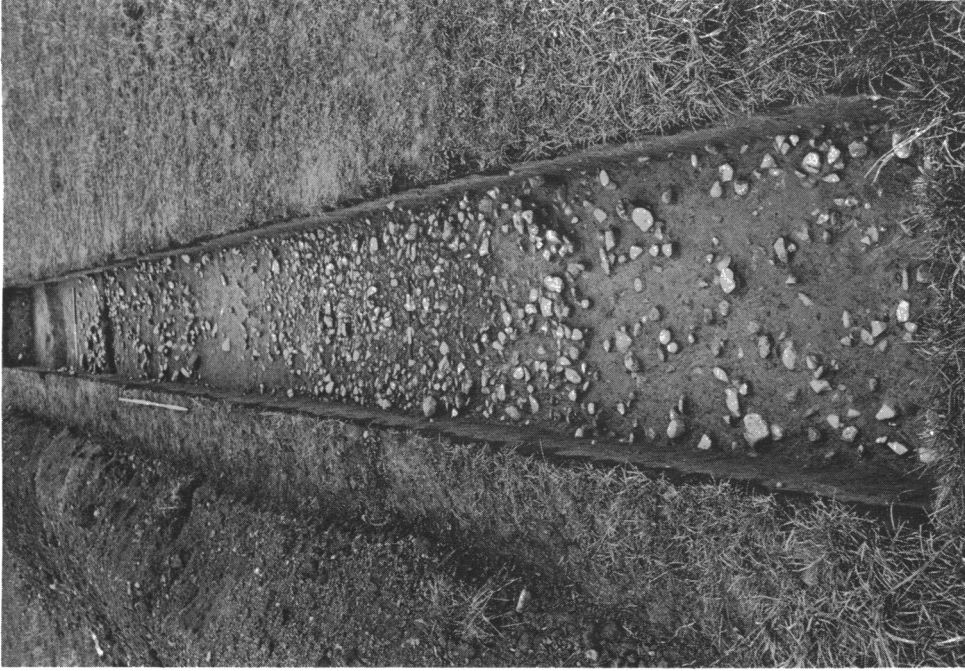
*(Photo: Central Excavation Unit)*

**A. Tarraby Lane, Cumberland. Pre-Wall ditch 760, Field 6 (p. 23).**



*(Photo: Central Excavation Unit)*

PLATE VII



*(Photo: Central Excavation Unit)*

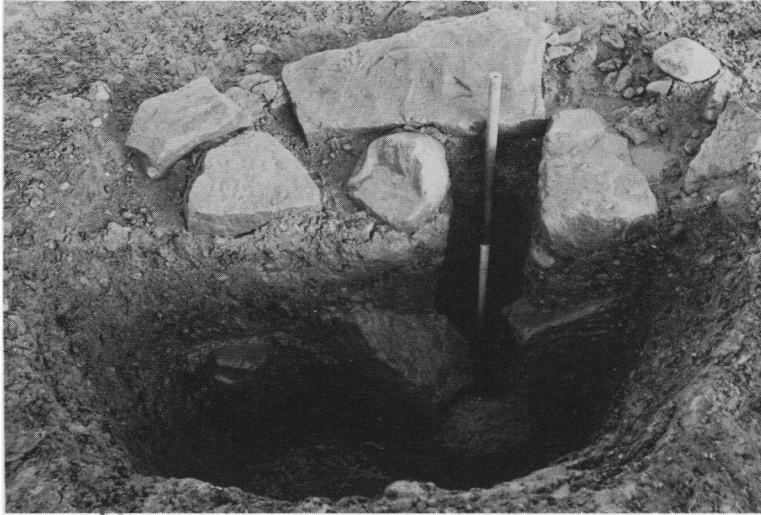
**B. Tarraby Lane, Cumberland. Roman road surface, Field 1 Trench 1 (p. 30).**



*(Photo: Central Excavation Unit)*

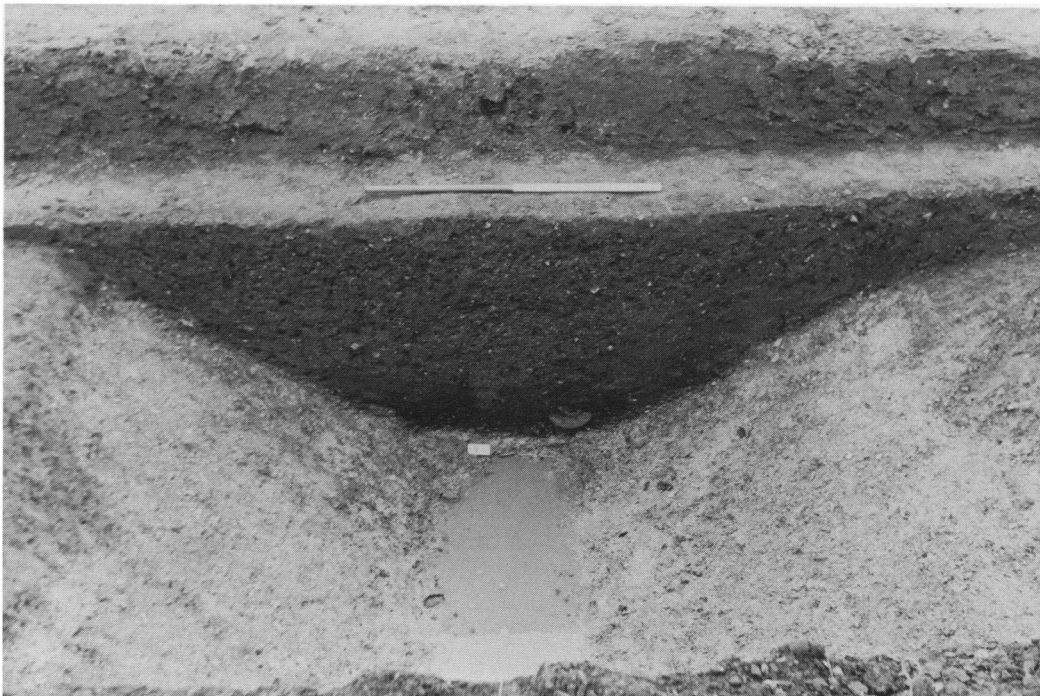
**A. Tarraby Lane, Cumberland. Post-hole line, Field 4 Trench N (p. 30).**

**PLATE VIII**



*(Photo: Central Excavation Unit)*

**A. Tarraby Lane, Cumberland. Post-hole 246, Field 4 Trench N, showing typical rectangular post-socket (p. 30).**



*(Photo: S. Johnson)*

**B. Hayton, Yorkshire. Inner ditch of fort at E. Angle (p. 64).**



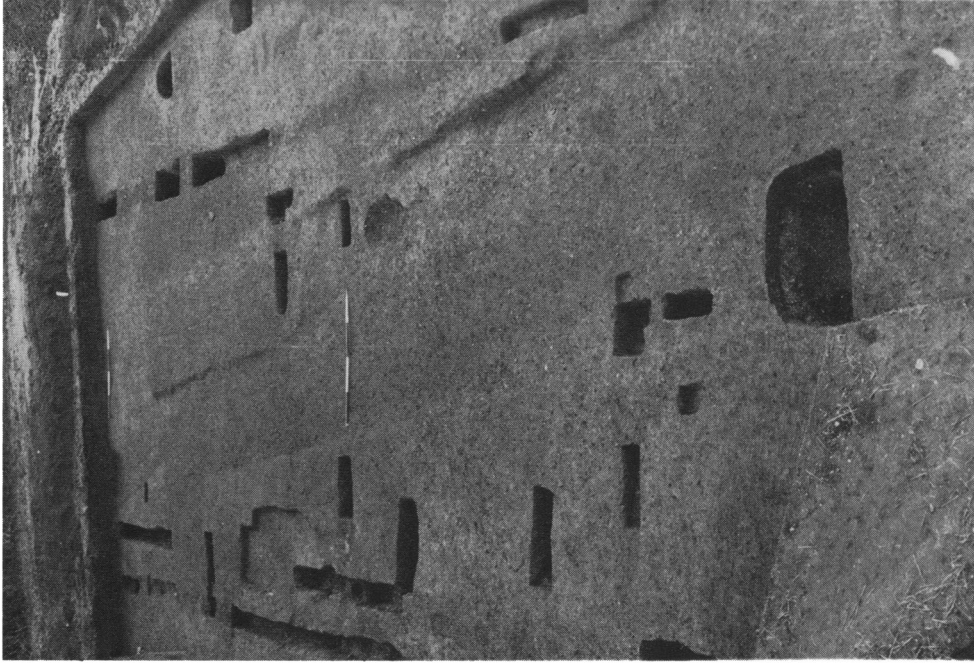
PLATE IX



*(Cambridge University Collection: copyright reserved)*

Hayton, Yorkshire. The Roman Fort and other crop-marks from the SW, Autumn 1974 (pp. 57 f).

PLATE X



(Photo: S. Johnson)

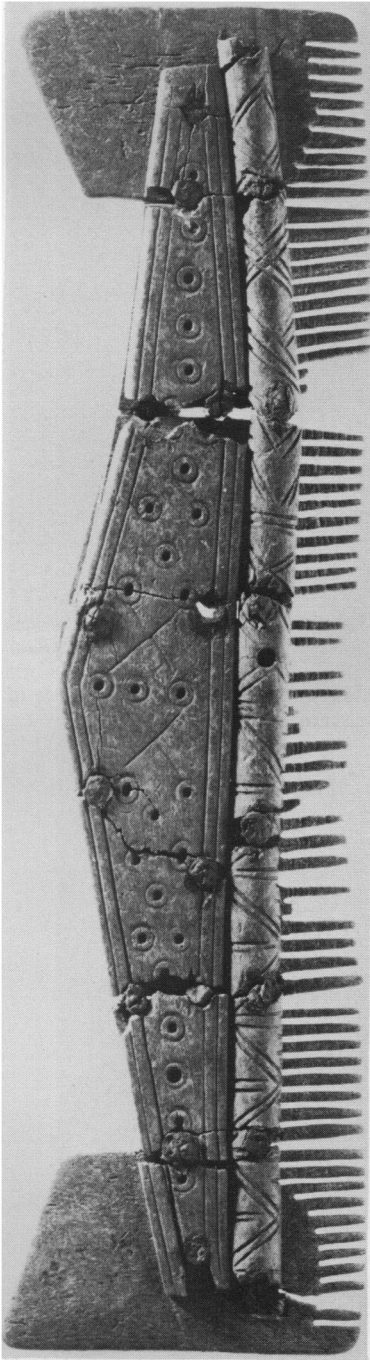
**B. Hayton, Yorkshire. The barrack (Area 5), looking SE (p. 67).**



(Photo: S. Johnson)

**A. Hayton, Yorkshire. Outer ditch of fort near E. Angle and cow-burial on its outer lip (p. 71).**

PLATE XI



(Photo: R. L. Wilkins)

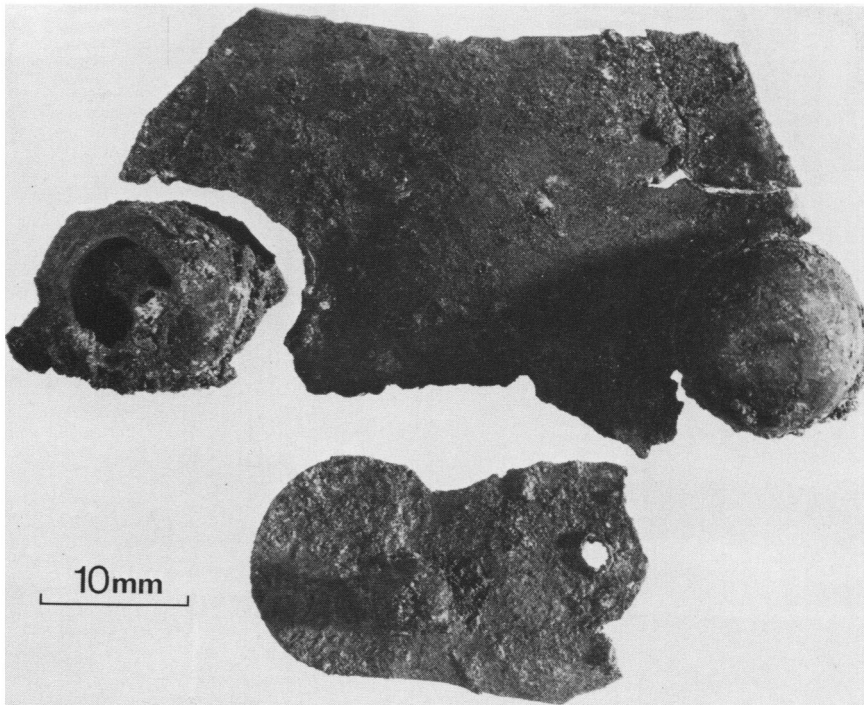
Hayton, Yorkshire. The Anglo-Saxon Bone and Antler Comb (p. 110). Scale 1 : 1.

PLATE XII



(Photo: P. C. Buckland)

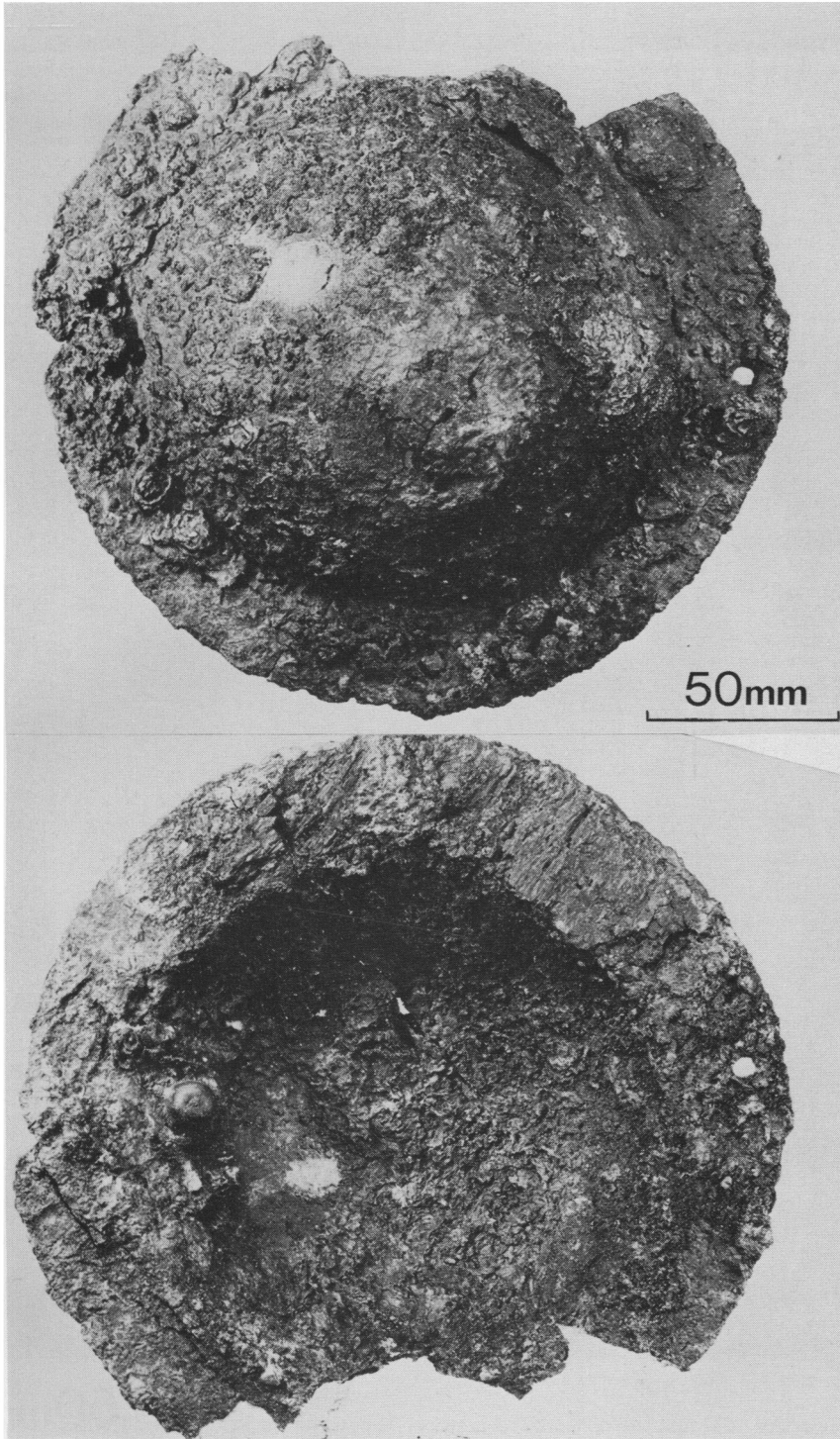
A. Doncaster 1971: the shield *in situ*, looking south-west (p. 247). The black carbonised trace of the wooden shield-board can be discerned.



(Photo: Ancient Monuments Laboratory, Department of the Environment; Crown copyright)

B. Doncaster: fragments of sheet bronze and attached studs from 'collar' around boss (p. 256). The curved nature of the edges of the lower piece suggests breakage along lines of chasing.

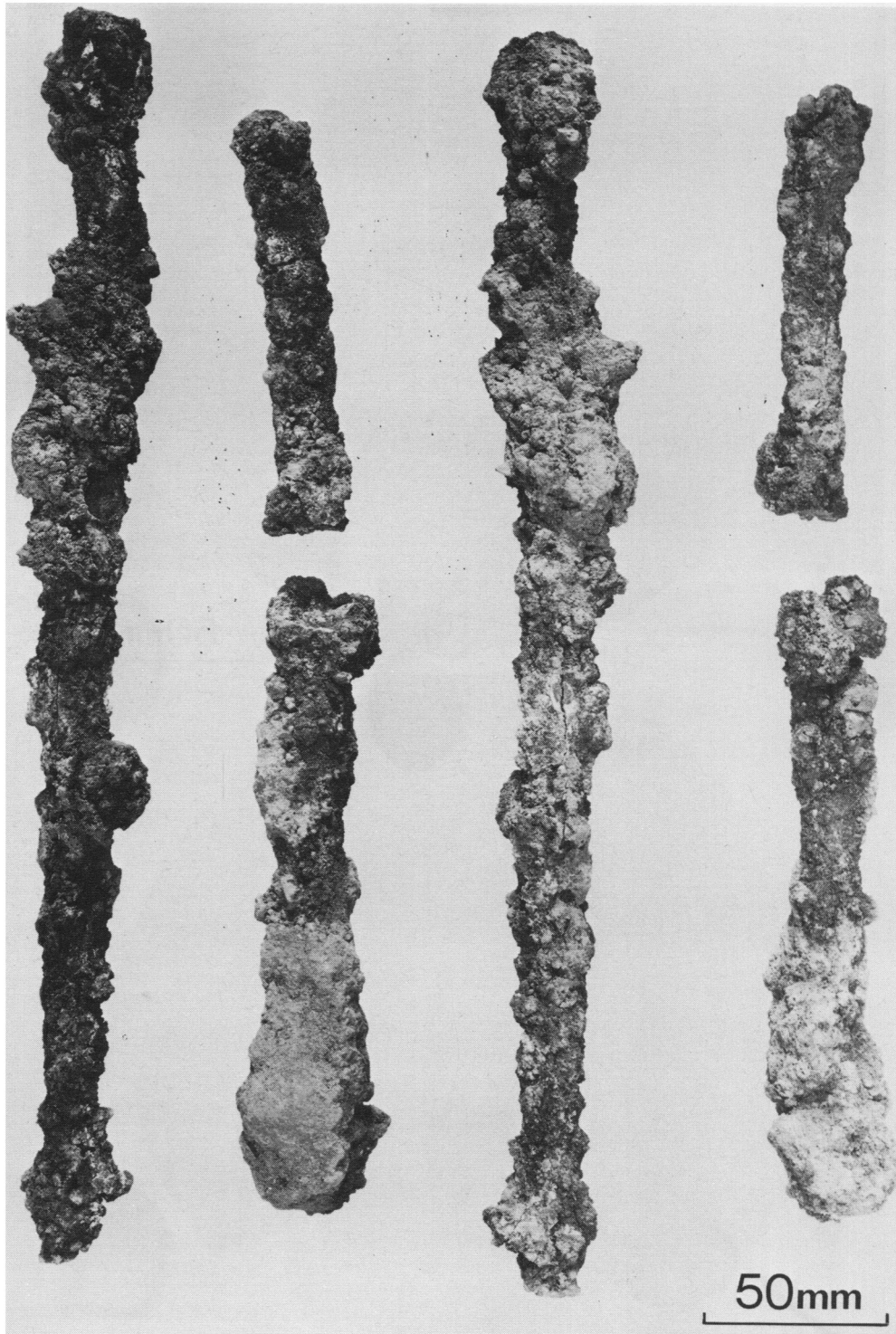
PLATE XIII



*(Photo: Museum and Art Gallery, Doncaster)*

**Doncaster: the shield boss (pp. 249 ff.).**

PLATE XIV



*(Photo: Ancient Monuments Laboratory, Department of the Environment; Crown copyright)*

Doncaster: the broken fragments of the handgrip after conservation (p. 249).

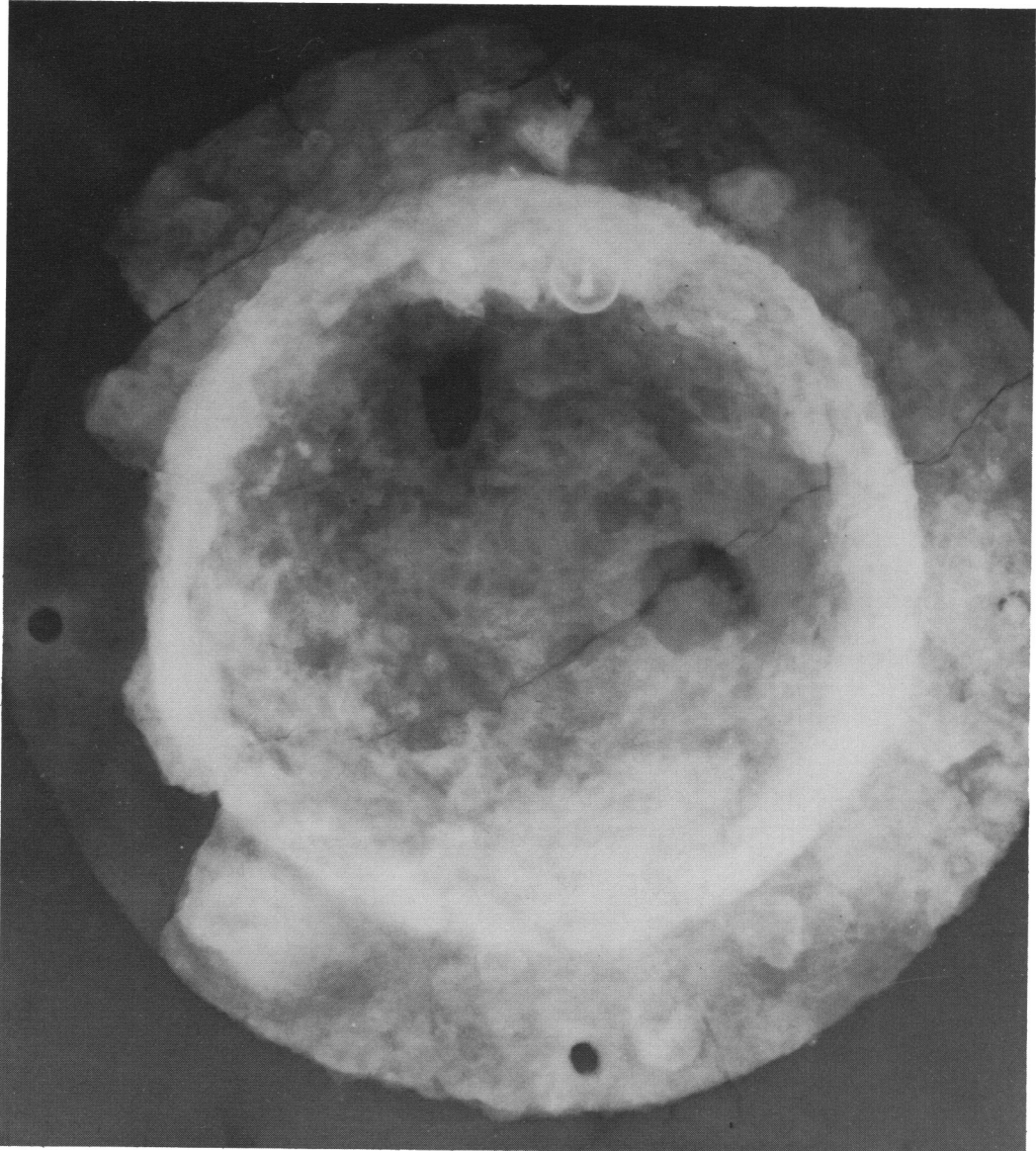
PLATE XV



*(Photo: Dept. of Nuclear Physics, University of Bradford)*

**Doncaster:** X-ray photograph of the sections of handgrip and the 'clip' (p. 249). The splayed shape of the rivet holes in the handgrip is evident.

PLATE XVI

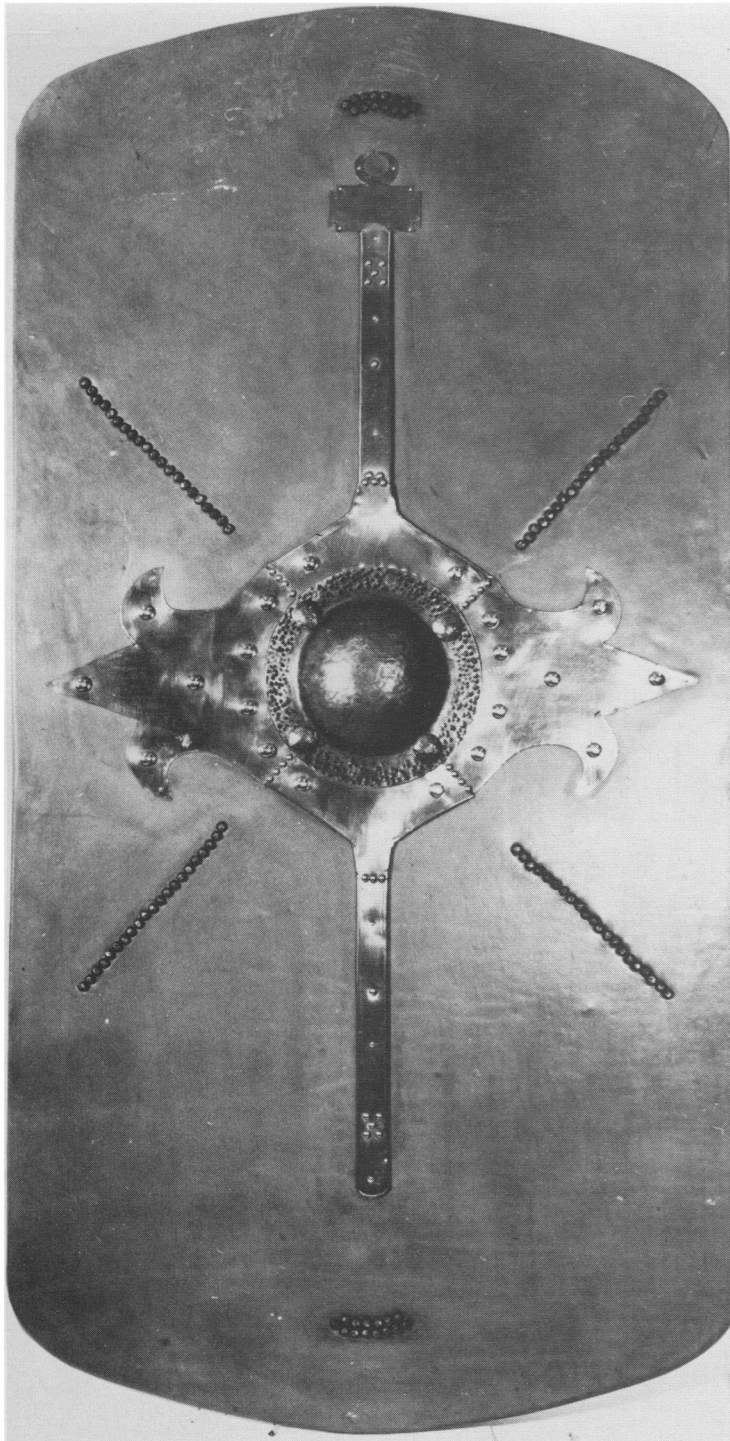


*(Photo: Dept. of Nuclear Physics, University of Bradford)*

Doncaster: X-ray photograph of the boss. A large bronze stud can be seen corroded onto the inside of the boss (p. 251).



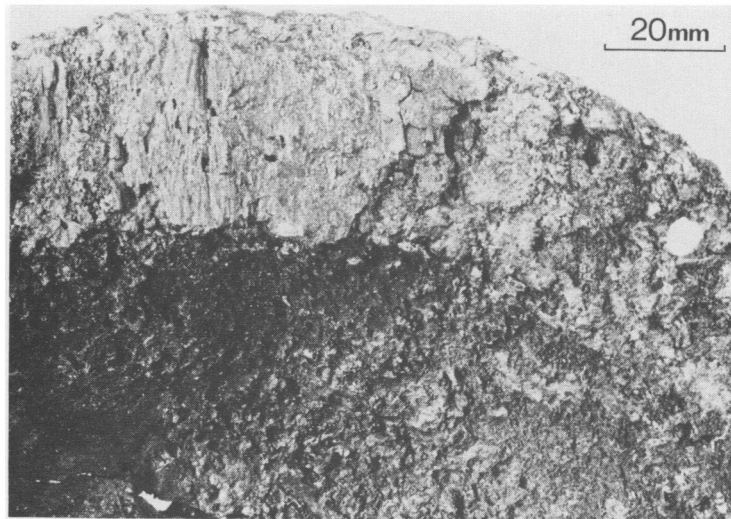
PLATE XVII



*(Photo: Museum and Art Gallery, Doncaster)*

**The Doncaster Shield: reconstruction (p. 256).**

PLATE XVIII



*(Photo: Museum and Art Gallery, Doncaster)*

A. Doncaster: the carbonised wood of a plank from the shield corroded onto the inside of the flange of the boss (p. 251).



*(Photo: copyright reserved, University of Cambridge)*

B. Roman camp, Durno (pp. 271 ff.). About two-thirds of the SW side, including a gate where a change in direction occurs, are seen in this oblique photograph looking N over Westerton. The site of the NW gate lies by a fence just above a round clump of trees.

PLATE XIX



*(Photo: copyright reserved, University of Cambridge)*

Durno-Bennachie, panorama looking SSW (pp. 271 ff.). The camp occupies the foreground, where the small farms of Easterton (to left) and Westernton (right) can be distinguished. In the distance is the distinctive profile of Bennachie with its several summits, including the Mither Tap, the left-hand peak, crowned by a small hill-fort.

PLATE XX



(Photo: Otto Fein)

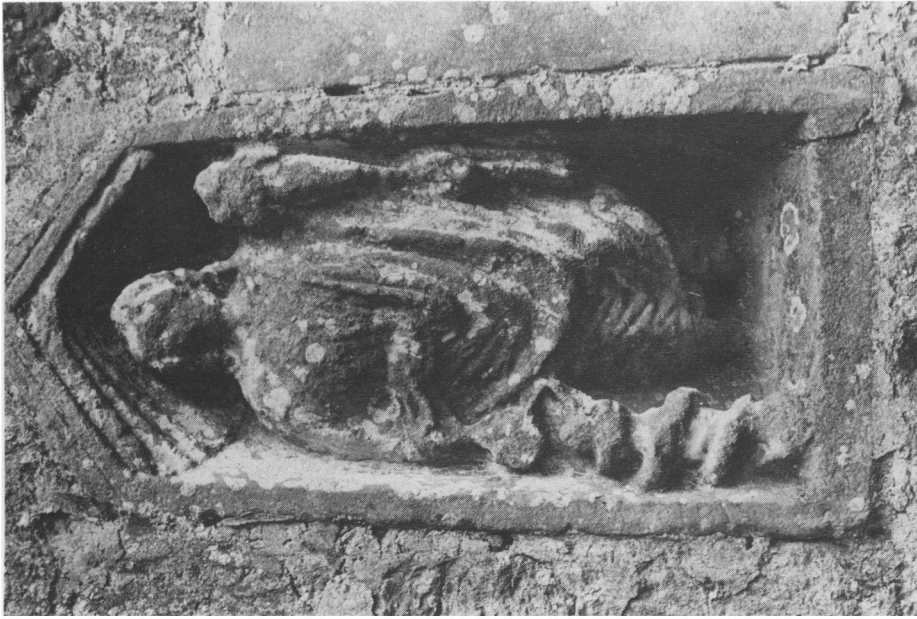
B. Statuette of a Genius, Museum of London (p. 328).



(Photo: David Darnall)

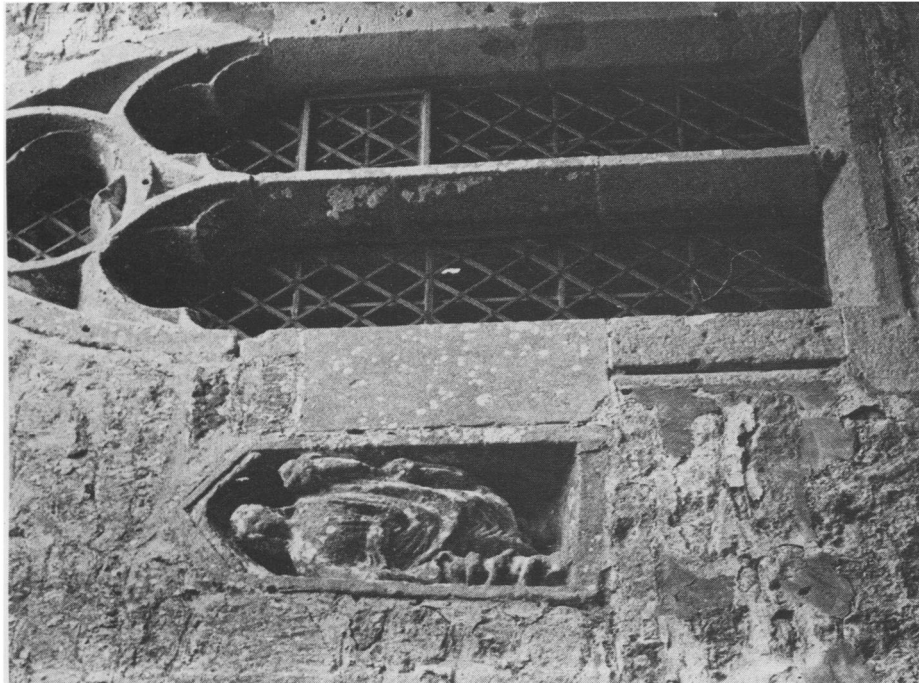
A. Relief of a Genius, Chedworth Manor, Glos. (p. 327).

PLATE XXI



(Photo: David Dartnall)

**B. Relief of a Genius, Tockenham Church, Wilts.**



(Photo: David Dartnall)

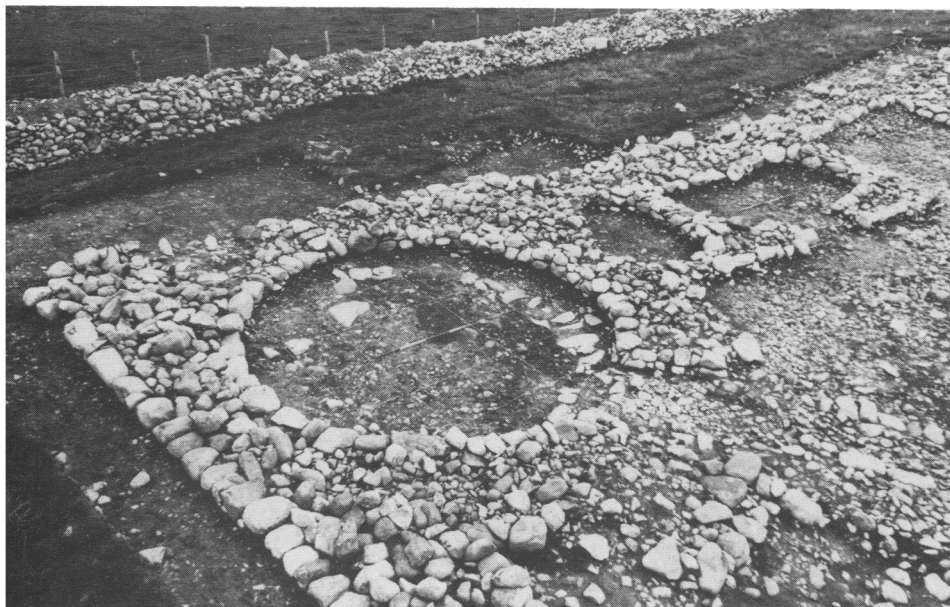
**A. Relief of a Genius, Tockenham Church, Wilts. (p. 328).**

PLATE XXII



(Photo: R. Wilkins)

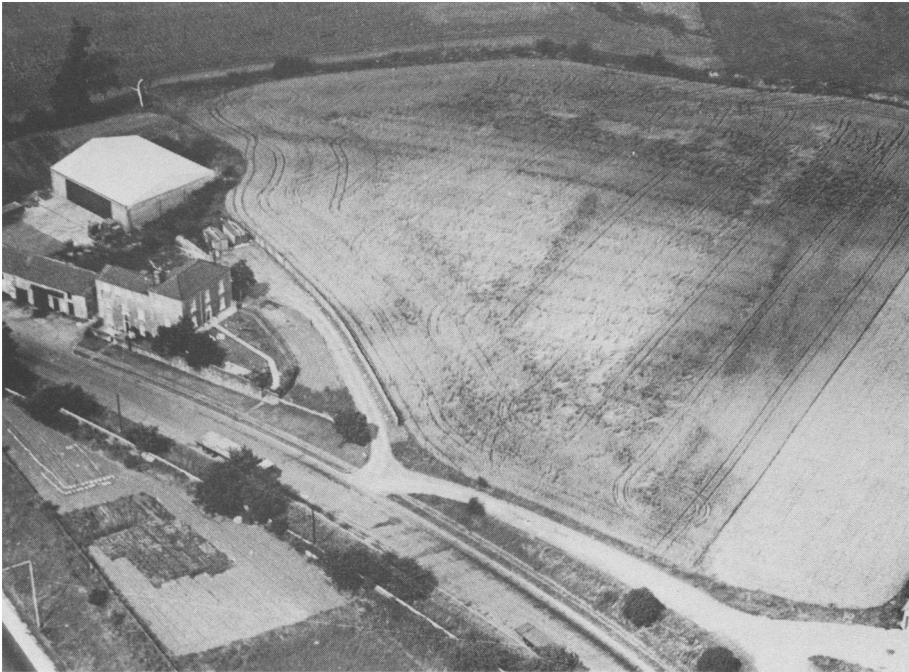
A. Intaglio of infant Hercules from Wroxeter (p. 395): blue glass intaglio in bronze ring (Scale 3:1) and impression (Scale 4:1).



© 2010, Cambridge Archaeological Trust

B. Cefn Graeanog settlement (p. 406): NE corner of enclosure.

PLATE XXIII



*(Photo: M. J. Dolby)*

**A. Roman fort at Robin Hood's Well, Burghwalls (p. 429), looking NE.**



*(Photo: T. Ward)*

**B. Chester, Abbey Green: a lead-lined latrine in centurion's quarters of c. A.D. 100 (p. 430).**

PLATE XXIV



(Photo: K. Camidge)

B. Lincoln, St. Mark's Church site: third-century oven built against S wall of workshop in strip-building (p. 433).



(Photo: K. Camidge)

A. Lincoln: Roman strip-building at St Mark's Church, looking E; north wall (partially excavated) on same line as later stone wall to left of positions of the aisle-posts (p. 433).



PLATE XXV



*(Photo: A. A. Round)*

A. Wall, Staffs.: incised stone showing four figures with (?) shields and (left) (?) male and female figures (pp. 435 f.). Scale, 1:2.



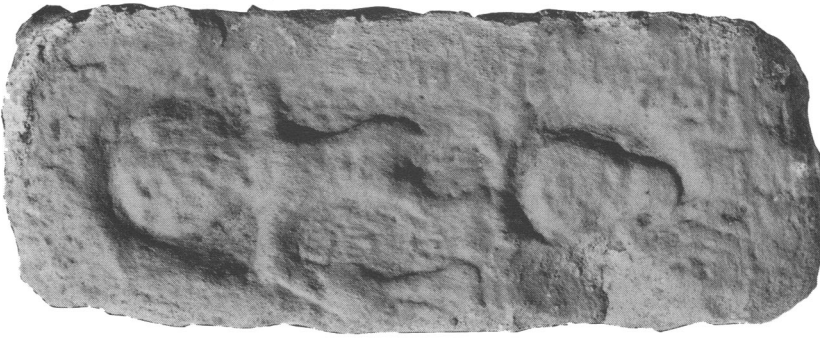
*(Photo: A. A. Round)*

B. Wall, Staffs.: human head carved in relief (pp. 435 f.). Scale, 1:2.



*(Photo: A. A. Round)*

C. Wall, Staffs.: incised head with horns (pp. 435 f.). Scale, 1:2.



(Photo: A. A. Round)

A. Walls, Staffs.: figure with club standing over skull (pp. 435 ff.). Scale, 1 : 2.



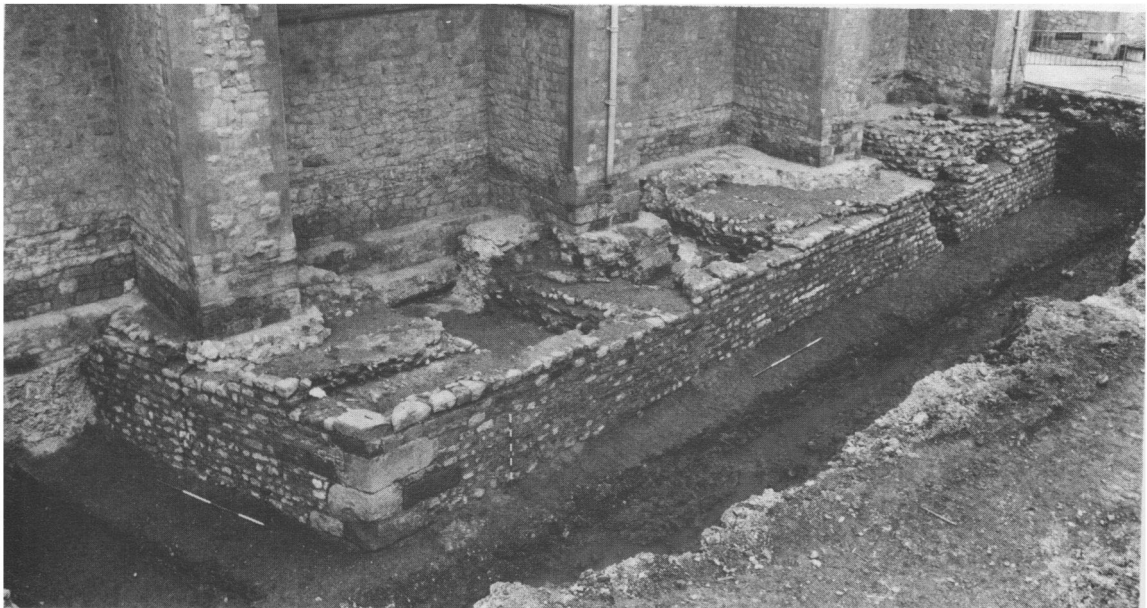
(Photo: J. Featherstone)

B. Bristol: 'forged' Roman tombstone (p. 484, No. 90). Scale, 1 : 6.



(Photo: T. J. Hurst, Museum of London)

A. London, Milk Street: second-century mosaic in red, grey, buff and white tesserae (pp. 452 f.).  
Scale, 2 x 10 cm.



(Photo: G. Parnell)

PLATE XXVIII



*(Photo: J. S. Earp)*

A. Southwark, Cathedral crypt: limestone group of hunter-god with hound and (?) stag (pp. 453 f.). Scale, 1:6



*(Photo: J. S. Earp)*

B. Southwark, Cathedral crypt: lid of sandstone chest with reclining woman (pp. 453 f.). Scale, 1:4.

PLATE XXIX



(Photo: J. S. Earp)

A. Southwark, Cathedral crypt: sandstone statuette of *genius* (pp. 453 f.).



(Photo: J. S. Earp)

B. Southwark, Cathedral crypt: group of figure and dolphin in marble. (pp. 453 f.). Scale, 3:4.

PLATE XXX



(Photo: J. S. Earp)

A. Southwark, Cathedral crypt: inscribed tombstone (p. 473, No. 2). Scale, 1 : 3.



(Photo: Museum of London, Dept. of Urban Archaeology. Copyright reserved)

B. Newtown, Tre-Owen: carved stone (p. 473, No. 4). Scale, 1 : 3.



*(Photo: Carlisle Museum and Art Gallery)*

**A.** Bewcastle: inscribed building-stone (p. 474, No. 9). Scale, 1:4.



*(Photo: The Bowes Museum)*

**B.** Binchester: inscribed fragment of tile (p. 477, No. 27). Scale, 1:2.

PLATE XXXII



*(Photo: London Institute of Archaeology)*

A. Brandon: inscribed silver ring (p. 481, No. 66). Scale, 5:1.



*(Photo: A. E. Rollings)*

B. Brafield: inscribed silver ring (p. 480, No. 62). Scale, 5:1.