

PAYNE WHITNEY LIBRARY

PAYNE WHITNEY LIBRARY
NY HOSPITAL-CORNELL MED CTR
525 EAST 68TH STREET
NEW YORK, NY 10021

THE BRITISH JOURNAL OF PSYCHIATRY

PAYNE WHITNEY LIBRARY

VOLUME 150



PAYNE WHITNEY LIBRARY
NY HOSPITAL-CORNELL MED CTR
525 EAST 68TH STREET
1987 NEW YORK, NY 10021

© The Royal College of Psychiatrists

THE BRITISH JOURNAL OF PSYCHIATRY

JANUARY 1987

Published monthly

Volume 150

Founded in 1853 as the *Asylum Journal* and known as the *Journal of Mental Science* from 1855 to 1963.

EDITOR

Hugh Freeman

ASSOCIATE EDITORS

Martin Roth	Kenneth Rawsley
Sidney Crown	Andrew C. Smith
Alan Kerr	Philip Snaith

ASSISTANT EDITORS

Sidney Bloch	Margaret Little	William Spry
Gaius Davies	Michael Reveley	Chris Thompson
Ian Falloon	Henry Rollin	Peter Tyrer
Julian Leff		Greg Wilkinson

EDITORIAL MANAGEMENT

Jacqueline Yates

SCIENTIFIC EDITOR

David Jago

ASSISTANT

Susan Marshall

ASSISTANT FOR THE BULLETIN

Elaine Millen

Correspondence, manuscripts, books for review, for both the *Journal* and the *Bulletin* should be addressed to the Editor, 17 Belgrave Square, London SW1X 8PG (Tel 01-235 8857). See inside front cover for further instructions.

Advertising enquiries, correspondence and copy should be addressed to Mr. Peter T. Mell, Advertisement Manager, PTM Professional Publications Ltd, 282 High Street, Sutton, Surrey SM1 1PQ (Tel 01-642 0162 PBX).

Subscriptions for non-members of the College are payable to British Journal of Psychiatry Subscription Department, The Royal Society of Medicine, 1 Wimpole Street, London W1M 8AE. Queries about missing or faulty copies should be addressed within six months to the printers, Henry Ling Ltd, The Dorset Press, 23 High East Street, Dorchester, Dorset DT1 1HD.

Annual subscription rates 1987 (12 issues post free)
United Kingdom: Institutions £85.00; Individuals £70.00
United States: Institutions \$245.00; Individuals \$200.00
Elsewhere: Institutions £115.00; Individuals £95.00
Single copies of the Journal, £7.00, \$14.00 (post free)

US Mailing Agents: Expeditors of the Printed Word Ltd, 527 Madison Avenue, Suite 1217, New York, NY 10022. 2nd Class postage paid at New York City, NY (USPS No. 536-870).

Back issues published before 1987 may be purchased from Hoddle, Doyle, Meadows Ltd, Old Mead Road, Bishops Stortford, Hertfordshire CM22 6JN (Tel 0279-813939).

Printed by Henry Ling Ltd, The Dorset Press, 23 High East Street, Dorchester, Dorset DT1 1HD (Tel 0305 65066).

© 1987 THE ROYAL COLLEGE OF PSYCHIATRISTS

YALE
UNIVERSITY PRESS

13 Bedford Square · London WC1B 3JF



**The "Sissy Boy Syndrome"
and the Development of
Homosexuality**

Richard Green, M.D.

Based on a fifteen-year study of two groups of young boys and their parents, this pathbreaking book by psychiatrist Richard Green is the first to trace the development of homosexual and heterosexual behaviour from childhood to adulthood. *Illus.* £30.00

Freud and the Rat Man

Patrick J. Mahony

with a foreword by Otto F. Kernberg, M.D.

A noted Freud scholar re-examines the famous Rat Man case, disclosing for the first time the patient's true identity, uncovering crucial discrepancies between Freud's process notes and his published report of the case, and demonstrating the link between Freud's use of language and his treatment. £20.00

Melancholia and Depression
From Hippocratic Times to Modern Times

Stanley W. Jackson, M.D.

The first comprehensive history of depression in English. Dr. Jackson discusses the ways in which depression has been defined over time, the explanations proffered for its causes, and the various approaches used to treat the sufferers. £35.00

**Social Origins of
Distress and Disease**

**Depression, Neurasthenia, and Pain in
Modern China**

Arthur Kleinman, M.D.

A unique examination of the multilayered relationship between neurasthenia, depression, and physical symptoms, based on the author's extensive research in the People's Republic of China — the first research by an American psychiatrist in China since 1949. £20.00

Interpreting Lacan

Psychiatry and the Humanities, Volume 6

*edited with an introduction and epilogue by
Joseph H. Smith, M.D., and William Kerrigan*

"The English-speaking reader wanting a balanced but critical exposition of Lacan ... will be grateful for *Interpreting Lacan*." — *American Journal of Psychiatry*.
May Paper, £9.95

**MRCPPsych
CANDIDATES**

Invaluable book now available
containing 5 Practice Exams for
MRCPPsych prelim Examination.

Book contains essential advice on exam
technique, 300 MCQs, self-marking
system, correct answers, teaching
explanations, revision index and book
list.

Books are sent by return of post, first
class mail. Order now by sending
cheque or visa/access number for
£7.95 plus p+p total £8.70 to
PATEST, FREEPOST, Dept P. 304
Galley Hill, Hemel Hempstead, Herts.
Tel: 0442-52113

PATEST



Mental Health Foundation

RESEARCH GRANTS

The Research Committee of the Foundation
exists to foster and support research in all fields
bearing on mental health, mental illness and
disorders of mental development.

The Committee meets twice a year to award
**RESEARCH GRANTS TO PROVIDE
SCIENTIFIC ASSISTANCE, EXPENSES or
EQUIPMENT** for research workers.

Closing Dates:

March 1st for Meeting in May

September 1st for Meeting in
November

For Grant application forms and further details
apply in writing to:

The Honorary Secretary,
The Research Committee,
Mental Health Foundation,
8 Hallam Street,
London W1N 6DH

SYMPOSIUM ON PSYCHIATRIC ASPECTS OF THE FACE

The face is so important for communication of emotions that it is bound to be a fascinating topic of study for psychiatrists.

In this symposium we will be exploring facial expressions in relationship to emotions, including distortion of expression in relationship to psychopathology. Other aspects will include disorders of facial movement that occur consequent on treatments and abnormalities of facial recognition secondary to cerebral lesions.

Programme

The Face – Its Clinical Relevance	Dr E. M. R. Critchley
Evaluation of Emotion by Non-Verbal Expression	Professor Paul Ekman
The Face – An Anthropologists's Viewpoint	Dr R. Littlewood
Disorders of Facial Recognition – Prosopagnosia	Professor H. D. Ellis
Disorders of Facial Recognition – Misidentification Syndromes	Dr S. Lewis
Disorders of the Face in Psychiatry – Dysmorphophobias	Dr T. M. Reilly
Disorders of the Face in Psychiatry – Movement Disorder	Dr A. J. Lees

This one-day Symposium will be held on:

Friday 6 March 1987

at

**The Royal Society
6 Carlton House Terrace
London, SW1Y 5AG**

The cost of registration will be £20 (£10 for junior medical staff.)

For further details of the Symposium and for registration forms, please contact:
Diane Carter, Charter Clinic, 1/5 Radnor Walk, London, SW3 4PB. Tel: 01-351 1272

Charter Clinics

*Applications and nominations are invited for the position
of*

Director of Research in Child and Adolescent Psychiatry

in the

*Division of Child and Adolescent Psychiatry, Department of Psychiatry, Albert Einstein
College of Medicine/Montefiore Medical Center, Bronx, New York*

The Division has strong and extensive clinical and teaching programs in five centers all under one overarching administrative structure. The Department, of which the Division forms a part, has strong research programs in biological psychiatry, psychotherapy evaluation, and social psychiatry. With this appointment, we are seeking to expand our research activities in child psychiatry and to integrate them under one leadership. The successful candidate will be expected to:

1. Carry forward his/her own research activities with a major focus in psychopharmacology/biological psychiatry and/or epidemiology particularly welcome, but not to the exclusion of others,
2. Integrate, stimulate and oversee child psychiatry research activities in the several centers of the Division,
3. Integrate, stimulate and come to play a major direct role in the teaching, Division-wide, of research related material.

The position is full-time for an M.D. or a Ph.D. Academic appointment and salary commensurate with experience. Submit by February 15, 1987 to:

Everett Dulit, M.D., Director, Division of Child Psychiatry, Albert Einstein College of Medicine/
Montefiore Medical Center, 111 East 210th Street, Bronx, New York 10467

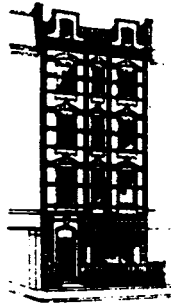
**PROVINCE OF BRITISH COLUMBIA, CANADA
MINISTRY OF HEALTH**

PSYCHIATRISTS

Mental Health Services in British Columbia has recently announced the amalgamation of their primary in-patient psychiatric hospitals (Riverview and Valleyview). This new hospital is organized into adult and geriatric divisions and invites qualified applicants (FRCPC or MRC Psych) to direct a broad range of multi-disciplinary programs, including assessment, acute care, continuing treatments and community preparation for a total patient population of approximately 1200. Research and educational programs have been developed as an integral part of the activities of each division.

Both salaried and contract appointments are available with potential earnings up to \$90,000 Cdn. per annum. Facilities are located twenty minutes east of Vancouver.

Reply with a curriculum vitae to Dr. J. E. Runions, Clinical Director, Riverview Hospital, 500 Lougheed Highway, Port Coquitlam, B.C. Canada V3C 4JC immediately.



Institute of Family Therapy

(London)

TRAINING AND TEACHING PROGRAMME 1987/88

The Institute of Family Therapy (London) offers a series of courses, ranging from a **four-year, part-time Training Programme**, to **one and two day workshops**, for professionals working in related fields, i.e. Social Work, Clinical Psychology, Psychiatry, Nursing.

INTRODUCTORY COURSE IN FAMILY THERAPY

The Introductory Course is focussed towards relevant professional staff who want to develop their interest in and explore work with families. The concepts underlying work with the family as a system and the broad principles of systems theory will be presented.

30 sessions of 3½ hours on Tuesday afternoons.

CLINICAL TRAINING PROGRAMME

FAMILY THERAPY TRAINING, PART I

This course is open to participants who have completed an Introductory Course in Family and Marital Therapy. The Course offers consultation to members' work in their agency setting and development of their therapeutic skills.

30 sessions of 3½ hours on Wednesday evenings.

FAMILY THERAPY TRAINING, PART II CLINICAL SUPERVISION

30 sessions of 4 hours over 2 years: supervision groups, theoretical seminars, tutorials and lectures. Participants will normally be required to complete Family Therapy Training, Part I before clinical supervision.

The Training Programme Commences each year in October.

DAY WORKSHOPS AND SHORT COURSES

The Institute offers one and two day workshops and short courses focussing on specific issues. The Spring term workshops will focus mainly on Life Cycle and Family Breakdown Issues.

SPECIAL EVENTS

ETHNICITY AND FAMILY THERAPY—a series of evening seminars in March, May and June 1987 to explore the relationship between culture, family structure life cycle issues and the implications for family work.

VIDEO TAPES

The Institute has a varied video library of tapes available for hire. The revised Teaching Tape Catalogue is now available. The current list of tapes for hire includes work by British, American and European therapists and is an invaluable teaching resource for students at all levels of experience.

For further details on any of the above please write, enclosing an SAE, and stating which details you require to:

The Administrator, Institute of Family Therapy (London), 43 New Cavendish St, London W1M 7RG.



Mental Health Foundation

FELLOWSHIPS

Applications are invited for Mental Health Foundation Fellowships from suitably qualified persons wishing to pursue Full-time Research Work bearing on problems of mental health, mental illness or mental handicap, whether in clinical psychiatry or in one of its supporting sciences.

Both Junior and Senior Fellowships are offered in the salary ranges of Junior/Senior Lecturer, Junior/Senior Registrar, according to seniority and experience, plus superannuation. However, Senior Fellowships are only awarded under exceptional circumstances, e.g., as a temporary measure prior to the Fellow taking up a permanent career post. The appointments, which are also open to candidates from overseas, will be for up to three years in the first instance and in exceptional circumstances may be extended to five years. Interviews will be held in May in London and the Fellowships will be taken up between the following July 1st and March 31st. Overseas candidates, if shortlisted, must attend for interview at their own expense.

Closing date: March 1st.

Application forms and further information may be obtained from

The Secretary,
The Research Committee,
Mental Health Foundation,
8 Hallam Street,
London W1N 6DH

Psychiatry in Medical Practice

DAVID GOLDBERG,
FRANCIS CREED
and SIDNEY BENJAMIN

In a straightforward and practical way, *Psychiatry in Medical Practice* sets out the knowledge which students need to understand the common psychiatric disorders and psychological problems they are likely to encounter in general practice.

c. 240 pages
Hardback 0 422 79670 0 c. £27.00
Paperback 0 422 79680 8 c. £11.95



TAVISTOCK

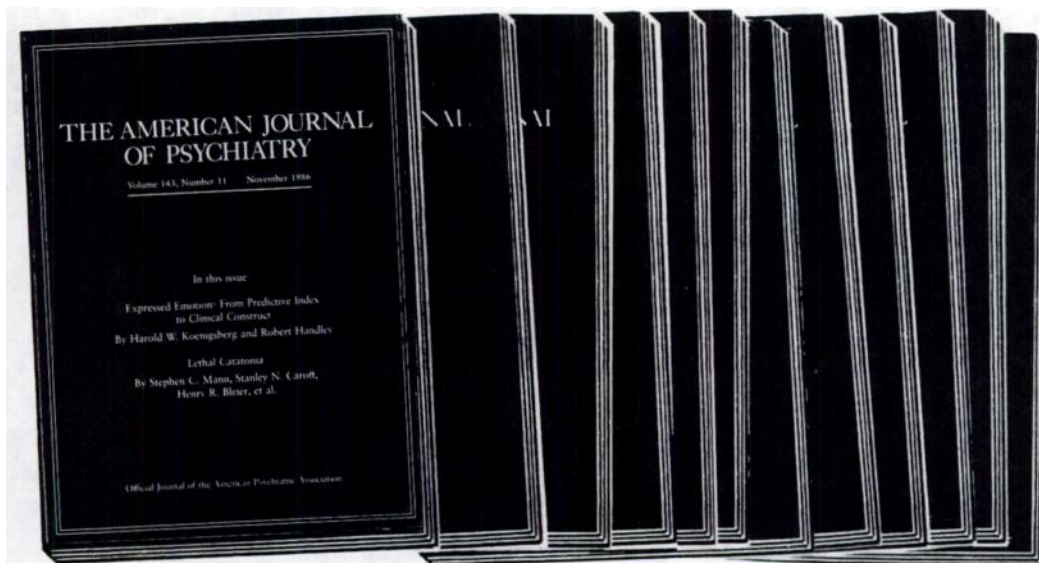
11 New Fetter Lane, London EC4P 4EE

SOUTH LONDON TRANSACTIONAL ANALYSIS CENTRE (SOLTAC)

Offers courses for members in the helping professions:

1. **Introductory Courses in Transactional Analysis**
Next Introductory course 28 February/1 March and 21/22 March 1987 (four day course)
2. **Intermediate and advanced in-depth training in transactional analysis**
(For members in the helping professions—including training staff to become qualified Transactional Analysts)
The clinical training scheme at SOLTAC is officially recognized by the International Transactional Analysis Association.
3. **Stress Management**
14 March 1987
4. **Theories and therapy of depression**
9/10 May 1987.

Details and SOLTAC programme from:
SOLTAC, 106 Heatherwoods Gardens, London, SE7 8ER
Tel: 01 854 3606



Now Available

The American Journal of Psychiatry

Volume 144 (1987) • 12 issues for \$65 • (Price includes shipping.)

Our money-back guarantee:

If the *Journal* doesn't meet with your satisfaction, you may cancel your subscription and receive a full refund for all unmailed issues.

ORDER FORM

Orders for the 1987 volume year must be received by April 30, 1987.

Mail to: **American Psychiatric Association**
Circulation Department
1400 K Street, N.W.
Washington, D.C. 20005

\$65 enclosed Bill me

Make check payable to the American Psychiatric Association. Payments must be remitted in U.S. funds.

Name _____

Address _____

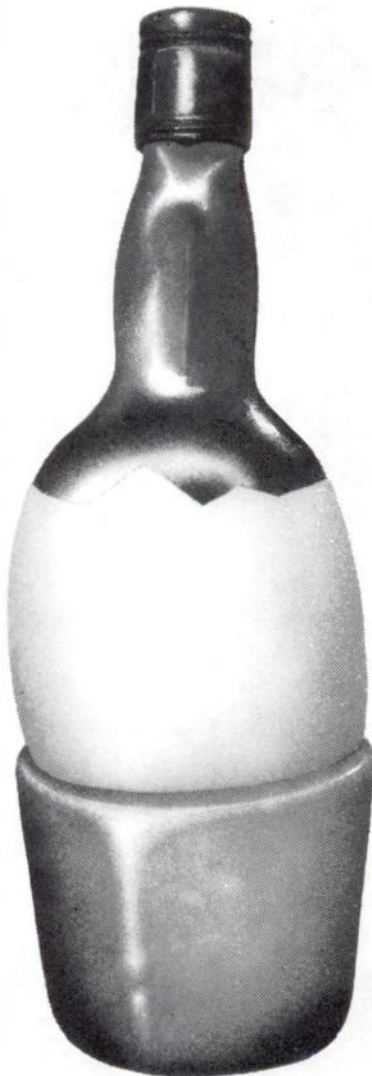
City _____

State/Zip _____

Your first issue will arrive in 6-8 weeks.

J71CPA

CHICKEN OR EGG?



Is your patient drinking because he has problems — or does he have problems because he is drinking?

The answer may be difficult to establish, particularly in the presence of continuing alcohol abuse.

An accurate assessment of the contribution of the various factors involved is essential in devising the most appropriate treatment programme for each individual.

The T.O. Prichard Unit at St. Andrew's Hospital offers detailed assessment and a full range of treatment facilities for all degrees of alcohol dependence.

For further details write or telephone:-

**Kathy Perkins, Admissions Officer,
St. Andrew's Hospital
Northampton NN1 5DG
Telephone: Northampton (0604) 29696**

NEW BOOKS *from Croom Helm*

VARIANT SEXUALITY

Edited by Glenn D. Wilson, Institute of Psychiatry, University of London

Presents contributions from major international authorities reviewing major themes in variant sexuality, and presenting new research. Genetic and evolutionary arguments are used, and topics such as psychoanalytic theories, fetishism, sadomasochism and transsexualism are reviewed.

£25.00 0-7099-3698-2 272 pages December 86

LIAISON PSYCHIATRY

Joan Gomez, Consultant Psychiatrist, Westminster Hospital, London

This book introduces a rapidly growing field by examining the scope and organisational issues of liaison psychiatry and its role in psychiatric patients with organic disease, psychosomatic disorders, emotional reactions to physical disease, terminal illness, etc. Useful for MRCPsych trainees and qualified staff.

£22.50 hbk 0-7099-1190-4 288 pages January 87
£10.95 pbk 0-7099-1191-2

PSYCHIATRIC EPIDEMIOLOGY: PROGRESS AND PROSPECTS

Edited by Brian Cooper, Institute for Mental Health, Mannheim, West Germany

Presents new data and reviews current knowledge and ideas in this field. The book consists of edited papers from the World Psychiatric Association symposium held in Edinburgh, September 1985.

£29.50 0-7099-4814-X 416 pages February 87

PRACTICAL PSYCHIATRY OF OLD AGE

John P. Wattis, Consultant in the Psychiatry of Old Age, St James' University Hospital, Leeds, and Mike Church, Clinical Psychologist, Sheffield

'It is uncommon to find a textbook that fulfils its stated aim so delightfully. Wattis and Church combine sound clinical principles with a wide knowledge of the growing number of publications to produce an eminently practical guide to the psychiatry of old age ... this book will become very popular.' *British Medical Journal.*

£19.95 hbk 0-7099-3643-5 208 pages June 86
£ 8.95 pbk 0-7099-3644-3

TRANSCULTURAL PSYCHIATRY

Edited by John L. Cox, Professor of Psychiatry, University of Keele

Probably the first substantial British text to review psychiatric illness across cultures, at a level suitable for both mental health professionals and students. The book covers a field which is commanding increasing attention as societies become more multicultural.

£29.50 0-7099-3428-9 352 pages June 86

THE THERAPIST'S THESAURUS: A CARTOON GUIDE

Robert Wilkins, Child Psychiatrist, Reading, and Penny Loudon, Family Therapist, Norwich

This book pokes gentle fun at the psychiatric penchant for jargon, with nearly 200 cartoon drawings of 'alternative' definitions of common psychiatric terms.

£ 4.95 pbk 0-7099-3677-X 96 pages September 86

KEY CASES IN PSYCHOTHERAPY

Edited by Windy Dryden, Goldsmiths' College, University of London

Written by leading psychotherapists from the UK and USA, this book shows how these therapists grappled with cases which challenged their ideas about the theory and practice of psychotherapy and how they have revised these ideas as a result.

£22.50 0-7099-4501-9 272 pages March 87

SOLVENT ABUSE: THE ADOLESCENT EPIDEMIC?

Joyce M. Watson, Vice-President, Re-Solv, Glasgow

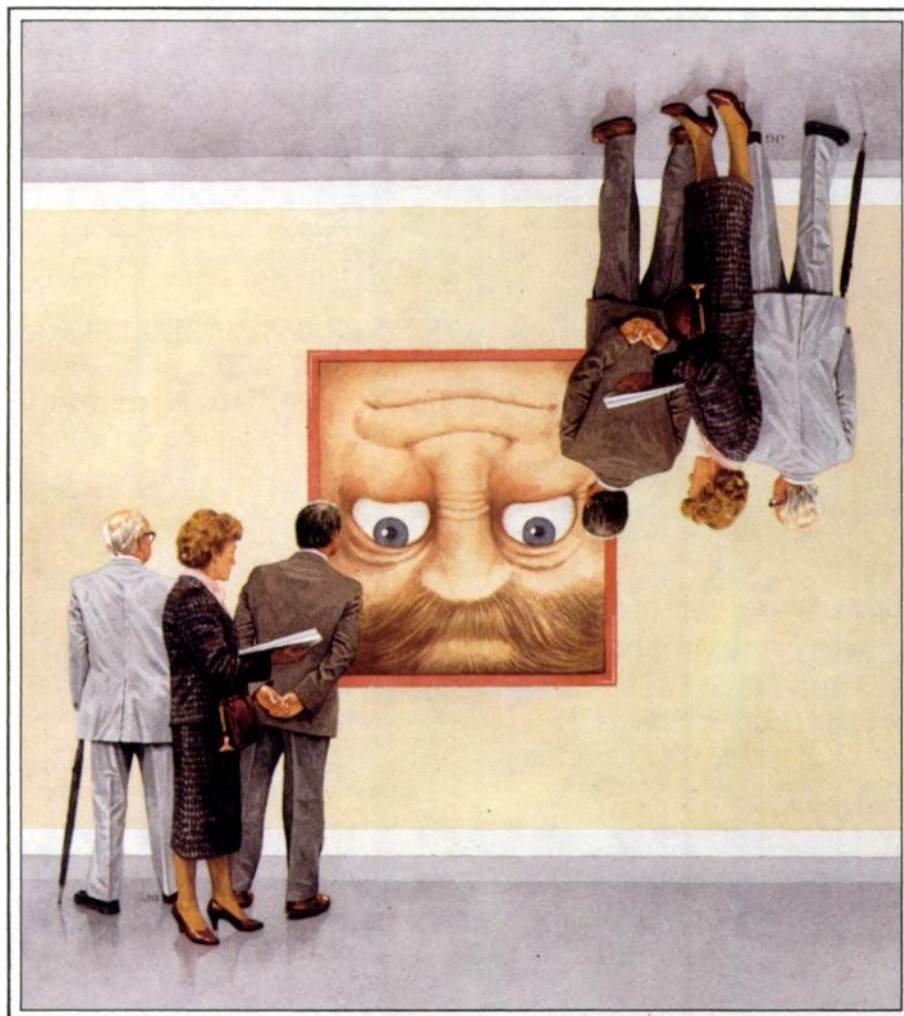
Based on detailed research by the author in the Strathclyde region to assess the characteristics of abuse and abusers, the author also reviews the world literature, so that the book will serve as a major reference source.

£17.95 hbk 0-7099-3683-4 256 pages October 86
£ 8.95 pbk 0-7099-3684-2

Available from booksellers. In case of difficulty contact Lisa Browne, Publicity Department, Croom Helm Publishers, Provident House, Burrell Row, Beckenham, Kent BR3 1AT. Tel: 01-658 7813

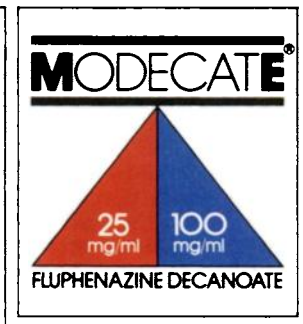
Croom Helm

Modecate Abbreviated Prescribing Information. Indications: Treatment of psychotic disorders. **Dosage – Modecate injection 25mg/ml.** Most patients are successfully maintained within the dosage range 12.5mg (0.5ml) every five weeks to 100mg (4ml) every two weeks. For full dosage information see Data Sheet. **Modecate concentrate injection 100mg/ml.** Adult patients found to require larger volumes of Modecate 25mg/ml may be transferred directly to the equivalent dose of Modecate concentrate on the basis that 1ml Modecate concentrate is equivalent to 4ml Modecate. **Contra-indications.** Patients with marked cerebral atherosclerosis, pheochromocytoma, renal or liver failure, or severe cardiac insufficiency. **Precautions.** Care should be taken in patients, particularly the elderly, who exhibit marked extrapyramidal reactions to oral phenothiazines. **Side effects.** Mainly extrapyramidal reactions. Drowsiness, lethargy, dryness of the mouth and mild hypotension may occur. **Product Licence No's and Prices.** **Modecate injection 25mg/ml.** PL 0034/5046. 10 x 1ml ampoule £25.20 **Modecate concentrate injection 100mg/ml.** PL 0034/0189. 10 x 0.5ml ampoule £49.99 10 x 1.0ml ampoule £48.86. Modecate is a Trade Mark of E. R. Squibb & Sons Ltd. Further information available from: Technical Services Department, E. R. Squibb & Sons Ltd., 141-149 Staines Road, Hounslow, Middlesex TW3 3JA. Tel: 01-572 7422.



TRIED AND TRUSTED

19 years ago, E. R. Squibb & Sons helped lead a revolution in the community based treatment of schizophrenia when they introduced the depot neuroleptic concept. Since then worldwide clinical experience has confirmed the efficacy and safety of Modecate in over 800,000 patients. Modecate is now regarded by many psychiatrists as the standard depot neuroleptic.



Modecate is available in two strengths, allowing a wide dosage range with convenient injection volumes. Most patients can be controlled with an injection at intervals of 3 weeks or more.¹ Modecate is less expensive than other depot neuroleptics when comparing equipotent doses.

1) Johnson DAW Br J Psychiat 1975; 126: 457-461.

E. R. Squibb & Sons Ltd., 141-149 Staines Road, Hounslow, Middlesex TW3 3JA. Tel: 01-572 7422.

