

CAMBRIDGE

JOURNALS

The Antiquaries Journal

Published for the Society of Antiquaries of London

Editors

Kate Owen, The Society of Antiquaries of London, United Kingdom

Christopher Catling, The Society of Antiquaries of London, United Kingdom

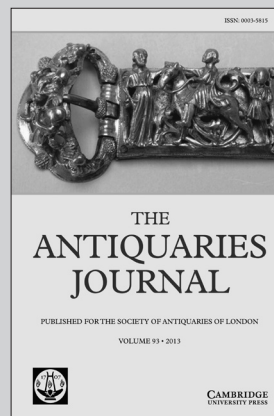
The Antiquaries Journal aims to reflect the multi-disciplinary nature of the study of material culture, publishing a balanced mix of papers from all periods, from prehistory to the recent past. The journal seeks papers that address research questions from a variety of perspectives, combining, for example, historical, art historical, architectural, linguistic, archaeological and scientific data. It will be essential reading for archaeologists, architectural and art historians and material culture specialists, as well as those involved in conservation in its broadest application.

Price information

is available at: <http://journals.cambridge.org/ant>

Free email alerts

Keep up-to-date with new material – sign up at
<http://journals.cambridge.org/ant-alerts>



Antiquaries Journal
is available online at:
<http://journals.cambridge.org/ant>

To subscribe contact Customer Services

in Cambridge:

Phone +44 (0)1223 326070

Fax +44 (0)1223 325150

Email journals@cambridge.org

in New York:

Phone +1 (845) 353 7500

Fax +1 (845) 353 4141

Email

subscriptions_newyork@cambridge.org

For free online content visit:
<http://journals.cambridge.org/ant>



CAMBRIDGE
UNIVERSITY PRESS

CAMBRIDGE

JOURNALS

Archaeological Dialogues

Editors

Michael Dietler, University of Chicago, USA

Sarah Tarlow, University of Leicester, UK

Jeremia Pelgrom, Koninklijk Nederlands Instituut, Rome, Italy

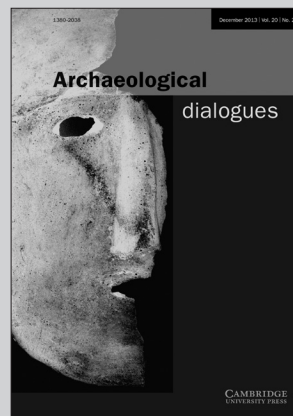
Archaeology is undergoing rapid changes in terms of its conceptual framework and its place in contemporary society. In this challenging intellectual climate, *Archaeological Dialogues* has become one of the leading journals for debating innovative issues in archaeology. Firmly rooted in European archaeology, it now serves the international academic community for discussing the theories and practices of archaeology today. True to its name, debate takes a central place in *Archaeological Dialogues*.

Price information

is available at: <http://journals.cambridge.org/ard>

Free email alerts

Keep up-to-date with new material – sign up at
<http://journals.cambridge.org/ard-alerts>



Archaeological Dialogues is available online at:
<http://journals.cambridge.org/ard>

To subscribe contact Customer Services

in Cambridge:

Phone +44 (0)1223 326070

Fax +44 (0)1223 325150

Email journals@cambridge.org

in New York:

Phone +1 (845) 353 7500

Fax +1 (845) 353 4141

Email

subscriptions_newyork@cambridge.org

For free online content visit:
<http://journals.cambridge.org/ard>



CAMBRIDGE
UNIVERSITY PRESS

CAMBRIDGE

JOURNALS

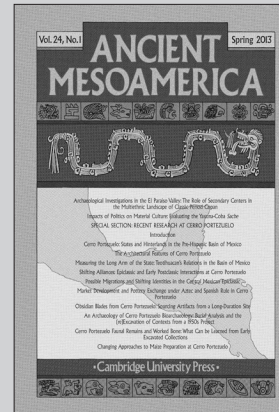
Ancient Mesoamerica

Editors

William R. Fowler, *Vanderbilt University, USA*

Kenneth G. Hirth, *Pennsylvania State University, USA*

Ancient Mesoamerica is the international forum for the method, theory, substance and interpretation of Mesoamerican archaeology, art history and ethnohistory. The journal publishes papers chiefly concerned with the Pre-Columbian archaeology of the Mesoamerican region, but also features articles from other disciplines including ethnohistory, historical archaeology and ethnoarchaeology. Topics covered include the origins of agriculture, the economic base of city states and empires, political organisation from the Formative through the Early Colonial periods, the development and function of early writing, and the use of iconography to reconstruct ancient religious beliefs and practices.



Ancient Mesoamerica

is available online at:

<http://journals.cambridge.org/atm>

To subscribe contact Customer Services

Americas:

Phone +1 (845) 353 7500

Fax +1 (845) 353 4141

Email

subscriptions_newyork@cambridge.org

Rest of world:

Phone +44 (0)1223 326070

Fax +44 (0)1223 325150

Email journals@cambridge.org

Free email alerts

Keep up-to-date with new material – sign up at

journals.cambridge.org/atm-alerts

For free online content visit:
<http://journals.cambridge.org/atm>



CAMBRIDGE
UNIVERSITY PRESS

CAMBRIDGE

JOURNALS

Cambridge Archaeological Journal

Published for the McDonald Institute for Archaeological
Research

Editor

John Robb, University of Cambridge, UK

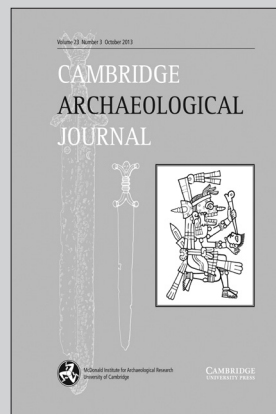
The *Cambridge Archaeological Journal* is one of the leading international journals for symbolic, social and cognitive archaeology. It provides a forum for innovative, descriptive and theoretical archaeological research. Specific topics span all archaeological ideas, regions and periods. In addition to major articles and shorter notes, the Cambridge Archaeological Journal includes book reviews and review features on significant recent books. The Journal has a distinguished editorial board including scholars of international repute.

Price information

is available at: <http://journals.cambridge.org/caj>

Free email alerts

Keep up-to-date with new material – sign up at
<http://journals.cambridge.org/caj-alerts>



Cambridge Archaeological Journal
is available online at:
<http://journals.cambridge.org/caj>

To subscribe contact Customer Services

in Cambridge:

Phone +44 (0)1223 326070
Fax +44 (0)1223 325150
Email journals@cambridge.org

in New York:

Phone +1 (845) 353 7500
Fax +1 (845) 353 4141
Email
subscriptions_newyork@cambridge.org

For free online content visit:
<http://journals.cambridge.org/caj>



CAMBRIDGE
UNIVERSITY PRESS

PROCEEDINGS. All communications concerning the publication of papers and notes in the *Proceedings* should be sent to Dr Julie Gardiner, Redroof, Green Road, Codford, Wiltshire, England, BA12 0NW jpg.escargots@gmail.com.

All contributors are encouraged to consult the Editor at an early stage in the preparation of papers and to obtain detailed instructions to contributors.

Books for review and periodicals for exchange should be sent to the Reviews Editor, P. Bradley, c/o Wessex Archaeology, Parkway House, Old Sarum Park, Salisbury UK SP4 6EB.

Further information, as well as guidelines for submission, may be found at <http://journals.cambridge.org/ppr>

Proceedings of the Prehistoric Society is published by Cambridge University Press for the Prehistoric Society.

This journal is included in the Cambridge Journals Online service which can be found at <http://cambridge.journals.org>.

INDIVIDUAL SUBSCRIBERS. Individuals receive the *Proceedings* as part of membership of the Prehistoric Society: further information on membership may be found at www.prehistoricsociety.org.

INSTITUTIONAL SUBSCRIPTION RATES. *Proceedings of the Prehistoric Society* (ISSN 0079-497X) is published once a year in December. The subscription price (excluding VAT) of volume 84, (2018), which includes print and online access, is £125 net (US\$202 in the USA, Canada and Mexico) for institutions. The online-only price available to institutions is £103 (US\$166). EU subscribers (outside the UK) who are not registered for VAT should add VAT at their country's rate. VAT-registered customers should provide their VAT registration number. Japanese prices for institutions (including ASP delivery) are available from Kinokuniya Company Ltd., P.O. Box 55, Chitose, Tokyo 156, Japan. All prices include delivery by air where appropriate.

Orders, which must be accompanied by payment, may be sent to a bookseller, subscription agent or direct to the publisher: Cambridge University Press, Journals Fulfillment Department, UPH, Shaftesbury Road, Cambridge CB2 8BS, UK; or in the USA, Canada and Mexico: Cambridge University Press, Journals Fulfillment Department, 100 Brook Hill Drive, West Nyack, New York 10994-2133, USA.

Printed in the UK by Bell & Bain Ltd, United Kingdom.

BACK NUMBERS OF THE PROCEEDINGS

Back numbers are available digitally on the Cambridge Journals Online service at <http://www.journals.cambridge.org/ppr>

Print copies of back numbers may be ordered from Cambridge University Press.

COPYING. This journal is registered with the Copyright Clearance Center, 222 Rosewood Drive, Danvers, MA 01923, USA. Organisations in the USA who are registered with the C.C.C. may therefore copy material (beyond the limits permitted by sections 107 and 108 if the U.S. Copyright law) subject to payment to the C.C.C. of the per copy fee of \$30. This consent does not extend to multiple copying for promotional or commercial purposes. Code 0079-497x/2016. ISI Tear Sheet Service, 3501 Market Street, Philadelphia, PA, 19104, USA, is authorised to supply single copies of separate articles for private use only. Organisations authorised by the Copyright Licensing Agency may also copy material subject to the usual conditions. For all other use, permission should be sought from Cambridge or from the North American Branch of Cambridge University Press.

This journal has been printed on FSC-certified paper and cover board. FSC is an independent, non-governmental, not-for-profit organisation established to promote the responsible management of the world's forests. Please see www.fsc.org for information.



ARTICLES

- I** MEIR FINKEL AND RAN BARKAI
The Acheulean Handaxe Technological Persistence: A Case of Preferred Cultural Conservatism?
- 21** ROB DINNIS, ALEXANDER A. BESSUDNOV, NATASHA REYNOLDS, KATERINA DOUKA, ALEXANDER E. DUDIN, GENNADY A. KHLOPACHEV, MIKHAIL V. SABLIN, ANDREI A. SINITSYN AND THOMAS F.G. HIGHAM
The Age of the 'Anosovka-Tel'manskaya Culture' and the Issue of a Late Streletsian at Kostënki 11, SW Russia
- 41** P. ALLSWORTH-JONES, I.A. BORZIAC, N.A. CHETRARU, C.A.I. FRENCH AND S.I. MEDYANIK
Brînzei: A Multidisciplinary Study of an Upper Palaeolithic site in Moldova
- 77** STEVEN MITHEN AND KAREN WICKS, *with a contribution from ANNE PIRIE*
The Interpretation of Mesolithic Structures in Britain: New Evidence from Criet Dubh, Isle of Mull, & Alternative Approaches to Chronological Analysis for Inferring Occupation Tempos & Settlement Patterns
- 111** KURT J. GRON, PETER ROWLEY-CONWY, EVA FERNANDEZ-DOMINGUEZ, DARREN R. GRÖCKE, JANET MONTGOMERY, GEOFF M. NOWELL AND WILLIAM P. PATTERSON
A Meeting in the Forest: Hunters and Farmers at the Coneybury 'Anomaly', Wiltshire
- 145** ROSIE R. BISHOP, MIKE J. CHURCH, IAN T. LAWSON, KATHERINE H. ROUCOUX, CHARLOTTE O'BRIEN, HELEN RANNER, ANDREW J. HEALD AND CATHERINE E. FLITCROFT
Deforestation and Human Agency in the North Atlantic Region: Archaeological and Palaeoenvironmental Evidence from the Western Isles of Scotland
- 185** SAMANTHA NEIL, JANE EVANS, JANET MONTGOMERY AND CHRIS SCARRE
Isotopic Evidence for Landscape use and the Role of Causewayed Enclosures During the Earlier Neolithic in Southern Britain
- 207** ALEXANDRA FIGUEIREDO, BENITO VILAS-ESTÉVEZ AND FABIO SILVA
The Planning and Orientation of the Rego da Murta Dolmens (Alvaiázere, Portugal)
- 225** THOMAS KADOR, LARA M. CASSIDY, JONNY GEBER, ROBERT HENSEY, PÁDRAIG MEEHAN AND SAM MOORE
Rites of Passage: Mortuary Practice, Population Dynamics, and Chronology at the Carrowkeel Passage Tomb Complex, Co. Sligo, Ireland
- 257** MIKE COPPER AND IAN ARMIT
A Conservative Party? Pots and People in the Hebridean Neolithic
- 277** FRANCES HEALY, PETER MARSHALL, ALEX BAYLISS, GORDON COOK, CHRISTOPHER BRONK RAMSEY, JOHANNES VAN DER PLICHT AND ELAINE DUNBAR
When and Why? The Chronology and Context of Flint Mining at Grime's Graves, Norfolk, England
- 303** STIJN ARNOLDUSSEN
The Fields that Outlived the Celts: The Use-histories of Later Prehistoric Field Systems (Celtic Fields or *Raatakkers*) in the Netherlands
- 329** EDWARD CASWELL AND BENJAMIN W. ROBERTS
Reassessing Community Cemeteries: Cremation Burials in Britain during the Middle Bronze Age (c. 1600–1150 cal Bc)
- 359** SERENA SABATINI, TIMOTHY EARLE AND ANDREA CARDARELLI
Bronze Age Textile & Wool Economy: The Case of the Terramare Site of Montale, Italy
- 387** TESS MACHLING AND ROLAND WILLIAMSON
'Up Close and Personal': The later Iron Age Torcs from Newark, Nottinghamshire and Netherurd, Peebleshire

ERRATUM

- 405** TESS MACHLING AND ROLAND WILLIAMSON
'Up Close and Personal': The later Iron Age Torcs from Newark, Nottinghamshire and Netherurd, Peebleshire – Erratum

VOLUME 84 | 2018

Cambridge Journals Online

For further information about this journal please go to the journal web site at

<http://journals.cambridge.org/ppr>



MIX
Paper from
responsible sources
FSC® C007785

CAMBRIDGE
UNIVERSITY PRESS