

Latin American Antiquity
Volume 12, Number 1
March 2001

3 Editor's Corner

ARTICLES

- 5 Beginnings of Village Life in Eastern Mesoamerica
Rosemary A. Joyce and John S. Henderson
- 25 Volcanism, Ecology, and Culture: A Reassessment of the Volcán Ilopango TBJ Eruption in the Southern Maya Realm
Robert A. Dull, John R. Southon, and Payson Sheets
- 45 Majolica in the Early Colonial Andes: The Role of Panamanian Wares
Ross W. Jamieson

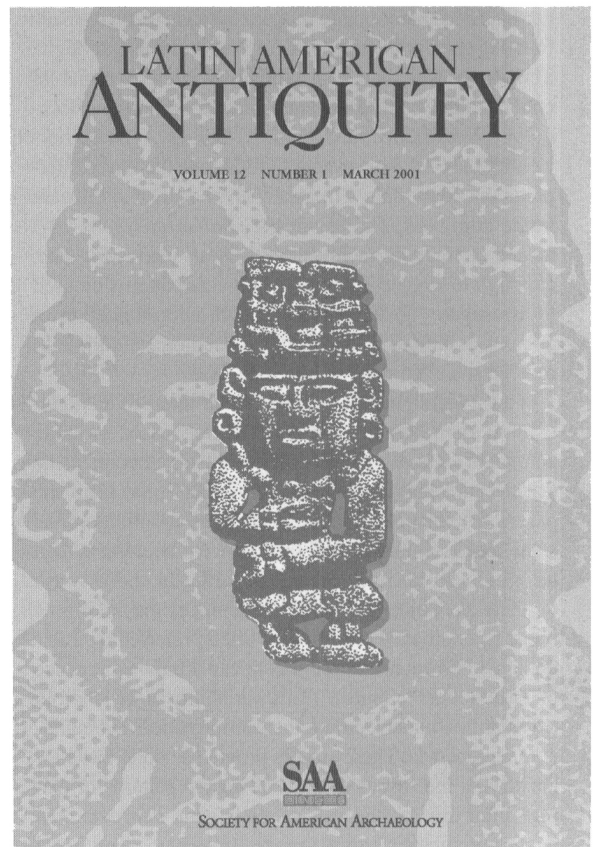
REPORTS

- 59 El desarrollo cultural en el valle de Azapa, extremo norte de Chile y su vinculación con los desplazamientos poblacionales altiplánicos
Francisco Rothhammer y Calogero M. Santoro
- 67 Cerro Baúl: A Wari Center on the Tiwanaku Frontier
Patrick Ryan Williams

COMMENTS

- 84 Genetic Evidence and the Origin of Maize
Jeff Bennetzen, Edward Buckler, Vicki Chandler, John Doebley, Jane Dorweiler, Brandon Gaut, Michael Freeling, Sarah Hake, Elizabeth Kellogg, R. Scott Poethig, Virginia Walbot, and Susan Wessler
- 87 Validity of AMS Dates on Maize from the Tehuacán Valley: A Comment on MacNeish And Eubanks
Austin Long and Gayle J. Fritz
- 91 An Interdisciplinary Perspective on the Origin of Maize
Mary W. Eubanks
- 99 A Response to Long's Radiocarbon Determinations That Attempt to Put Acceptable Chronology on the Fritz
Richard S. MacNeish

REVIEWS AND BOOK NOTES



NOTICE TO AUTHORS

American Antiquity publishes original papers on the archaeology of the New World and on archaeological method, theory, and practice worldwide. Authors of papers on Latin American topics are encouraged to submit their work to *Latin American Antiquity*. Papers on Latin American archaeology addressing broad methodological, theoretical, or comparative issues may be accepted by either journal after consultation with the editors. Authors submit manuscripts to the editor for consideration as ARTICLES, REPORTS, COMMENTS, or FORUM essays. REVIEWS and BOOK NOTES are solicited by the respective associate editor. OBITUARIES should be submitted to the editor, *The SAA Archaeological Record*, for publication (see *SAA Bulletin* March/April 1996, p. 7, for further details).

Authors should submit an original and four copies of their manuscripts, including all figures, tables, references, and notes. Detailed information on policy, style, and technical matters of manuscript preparation is given in the "Editorial Policy, Information for Authors, and Style Guide for *American Antiquity* and *Latin American Antiquity*," which appeared in the October 1992 issue (57:749–770) and can be read on the World Wide Web at <http://www.saa.org/Publications/StyleGuide/styframe.html>.

The editor reserves the right to evaluate manuscripts (with or without peer review) for appropriate subject matter, quality, length, and compliance with the style guide. Manuscripts may be returned to authors if they fail to meet expectations or conform to these guidelines. Manuscripts are evaluated by the editor in consultation with peer referees, as appropriate. The editor has the final responsibility for all decisions regarding manuscripts. The review process generally takes a minimum of two to four months. Authors will be notified as soon as a decision is reached to accept (outright or with revisions) or reject a manuscript.

To ensure the prompt receipt and handling of manuscripts, please send them to the editor: Timothy A. Kohler, Department of Anthropology, Washington State University, Pullman, WA 99164-4910. Inquiries regarding the style guide and the production of the journal should be directed to: John Neikirk, Society for American Archaeology, 900 Second Street, N.E., Suite 12, Washington, DC 20002-3557.

ARTICLES

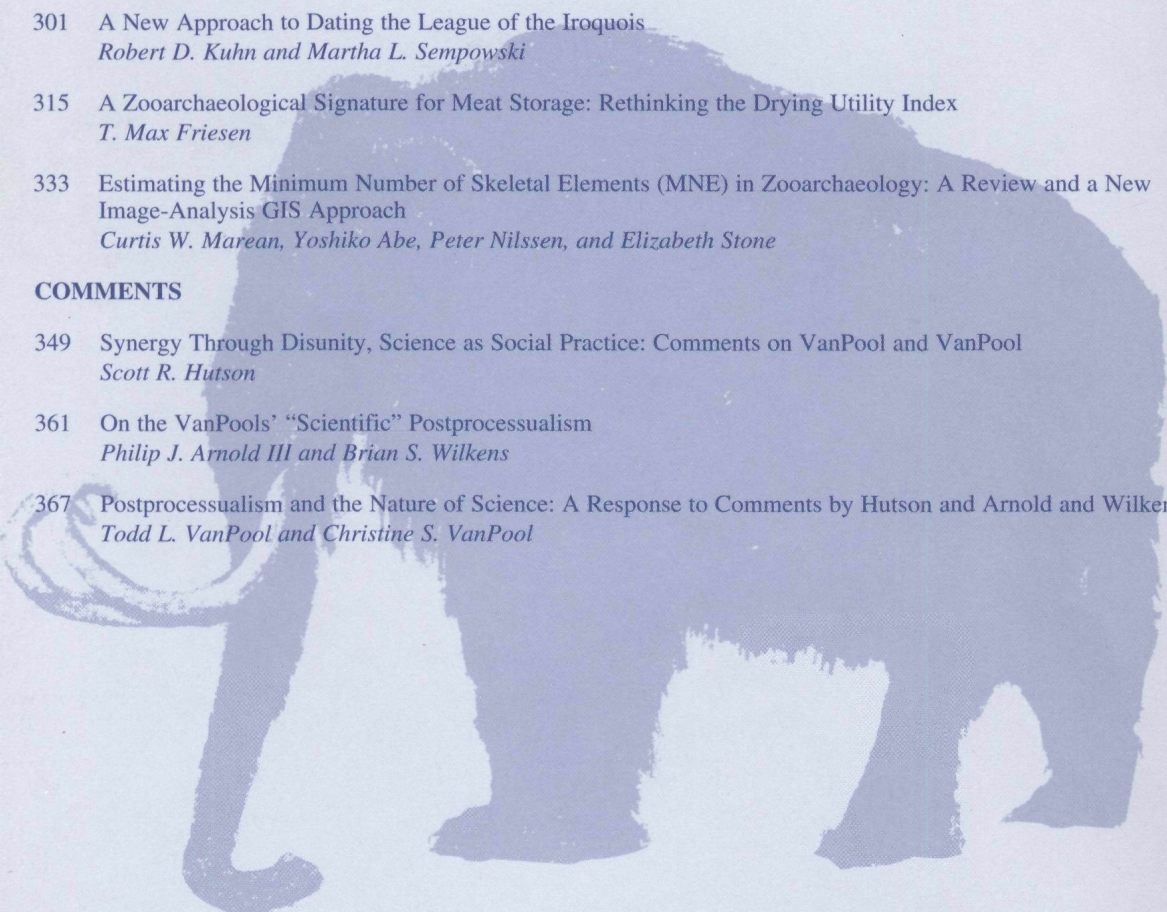
- 185 An Integrative Approach to Mortuary Analysis: Social and Symbolic Dimensions of Chumash Burial Practices
Lynn H. Gamble, Phillip L. Walker, and Glenn S. Russell
- 213 Abandonment is Not as it Seems: An Approach to the Relationship between Site and Regional Abandonment
Margaret C. Nelson and Michelle Hegmon
- 237 Stone Raw Material Availability and Early Archaic Settlement in the Southeastern United States
I. Randolph Daniel, Jr.

REPORTS

- 267 Evidence for Late Paleoindian Ritual from the Caradoc Site (AfHj-104), Southwestern Ontario, Canada
D. Brian Deller and Christopher J. Ellis
- 285 Landscape Change and the Cultural Evolution of the Hohokam along the Middle Gila River and other River Valleys in South-Central Arizona
Michael R. Waters and John C. Ravesloot
- 301 A New Approach to Dating the League of the Iroquois
Robert D. Kuhn and Martha L. Sempowski
- 315 A Zooarchaeological Signature for Meat Storage: Rethinking the Drying Utility Index
T. Max Friesen
- 333 Estimating the Minimum Number of Skeletal Elements (MNE) in Zooarchaeology: A Review and a New Image-Analysis GIS Approach
Curtis W. Marean, Yoshiko Abe, Peter Nilssen, and Elizabeth Stone

COMMENTS

- 349 Synergy Through Disunity, Science as Social Practice: Comments on VanPool and VanPool
Scott R. Hutson
- 361 On the VanPools' "Scientific" Postprocessualism
Philip J. Arnold III and Brian S. Wilkens
- 367 Postprocessualism and the Nature of Science: A Response to Comments by Hutson and Arnold and Wilkens
Todd L. VanPool and Christine S. VanPool



On the Cover: The Paleoindian points were prepared by Bruce Bradley. The bison (*Bison antiquus*) is used courtesy Dorling-Kindersley, Inc. The mammoth (*Mammuthus* sp.) on the back cover is taken from the painting *The Mammoth* by Charles R. Knight and is used courtesy American Museum of Natural History, New York.