

## ProductNews

### Ilion<sup>+</sup>™: Planar Surface Preparation for SEM Cross Section Viewing



Gatan, Inc. is pleased to introduce the Ilion<sup>+</sup>, a dedicated, ion beam based system for the preparation of large area planar cross sections from challenging SEM samples. The Ilion<sup>+</sup> uses a proprietary milling system that exposes significantly greater areas than traditional FIB milling while encompassing a wider range of delicate samples not compatible with mechanical polishing and other techniques. The Ilion<sup>+</sup> design is based on the proven Gatan PIPS™ (Precision Ion Polishing System).

Gatan, Inc.  
www.gatan.com

### Mini-Loop Heat Exchanger for Process Cooling Water



The X10 Mini-Loop Heat exchanger by Applied Thermal Control uses facility water to cool one side of the heat exchanger while deionized water (or a coolant of choice) on the second side is used to cool the application. The application loop is temperature-controlled to better than  $\pm 1^\circ\text{C}$ .

The unit is quiet and designed to be compact. Although the unit provides up to 12 kW of cooling power, the footprint is only 540 mm  $\times$  550 mm.

Applied Thermal Control Ltd.  
www.app-therm.com

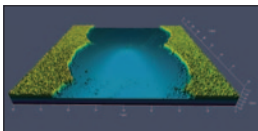
### New Sample Holders for Phenom



Phenom-World BV launched a new collection of sample holders and inserts for the Phenom™ desktop scanning electron microscope (SEM). Quick and easy sample loading ensures faster time to data. Imaging samples with the *Charge-Reduction Sample Holder* eliminates additional sample preparation. *Micro-Tool Sample Holder* images long, axial-shaped samples. *Micro-electronics Insert* enables non-destructive imaging of micro-electronics, solar cells, and other wafer-based samples. *X-view Insert* enables cross-sectional imaging.

Phenom-World BV  
www.phenom-world.com

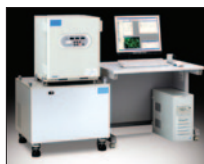
### Confocal Materials Microscopy—LSM 700 Measures Fine Roughness and Soft Surfaces



Carl Zeiss introduces the LSM 700/MAT laser-scanning microscope for materials research. It allows very precise, 3-dimensional imaging of surfaces. The combination of fluorescence and reflection techniques enables high-precision examination of semiconductors, metal, glass, and polymers with high information content. The integrated detection of fluorescence signals on and in the materials provides additional information. The easy-to-use system permits precise capture of 3D topography or the determination of finest roughness.

Carl Zeiss MicroImaging, Inc.  
www.zeiss.com/micro

### Olympus Offers VivaView™ MG Incubator Microscope Imaging System for Stem Cell Research



Olympus has introduced the VivaView™ MG (Multi-Gas) incubator microscope, a long-term live cell incubation and imaging system optimized for stem cell, cancer, and other research requiring independent control of both oxygen and carbon dioxide levels, along with other environmental parameters. The self-contained system can be adjusted to provide the low-oxygen (hypoxia) environmental conditions that many stem cell experiments and other advanced research protocols demand.

Olympus America Inc.  
www.olympusamerica.com/vivaview

### LW Scientific E8 Centrifuge



The 8-place LW Scientific E8 is an economical table-top centrifuge designed to fit any budget. This unit accommodates most test tubes from 3 ml–15 ml with proper separations without cell damage. The brushless motor is virtually maintenance-free and the lid port allows for speed calibration using a hand-held tachometer. Choose from two different models to meet your laboratory separation needs: fixed speed for blood only or variable speed for blood, urine, and other fluids that need slower speeds.

LW Scientific, Inc.  
www.LWScientific.com

### Lumencor Launches Newest Light Engine: First True Solid State Arc Lamp Replacement

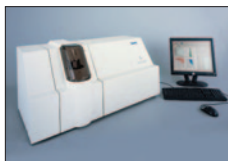


Lumencor announced the launch of the SPECTRA light engine,<sup>®</sup> which provides seven discrete solid state outputs spanning the complete visible spectrum, making it a true arc lamp replacement.

This product complements the family of multicolor light engine products by Lumencor for microscopists, researchers, and OEMs. Our light engines are supporting high content screening, live-cell imaging, digital histology, and gene-expression analysis worldwide.

Lumencor, Inc.  
www.lumencor.com

### Symex FPIA-3000 Measures Sub-visible Particulates in Biotherapeutics



Specialists at Malvern Instruments have demonstrated the application of dynamic particle image analysis to the measurement of sub-visible particulates using the Symex FPIA-3000 particle characterization system. At sizes below 10 microns, these particulates have proved difficult to characterize fully using traditional analytical techniques. This has prompted investigations into new ways of detecting the presence, measuring the size, and also characterizing the shape and intensity (transparency) of these particulates to ensure product safety and performance.

Malvern Instruments Ltd.  
www.malvern.com/fpiaproteins