

USED EQUIPMENT FOR SALE

- ✓ **WILD M5APO Stereo Microscope** with Apochromatic objective, trinocular phototube Hv, transmitted light stand, 10X oculars, accessories. Late version in mint condition. Price: \$4,900.00 or best offer. If interested please contact Mark Malkin at (607)253-3600 or eMail: mm15@cornell.edu
- ✓ **SIEMENS 1A Electron Microscope** (vintage circa 1966). In perfect condition and takes marvellous pictures. Free to good home. Contact Dr. Helga Kob, Moran Eye Center. Tel.: (801)585-6510, Fax: (801)581-3357.
- ✓ **Gatan 679/10B**, 1024 x 1024 pixel, slow scan CCD camera system. Call Beth Richardson at (706)542-1790.
- ✓ **Zeiss EM109 TEM** with in vacuum camera and anticontamination device. Excellent condition. Tel.: (317)274-0547, Fax: (317)278-2040.
- ✓ **Philips EM400T TEM/STEM** with single/double-tilt low-background analytical holders and single-tilt heating holder - asking \$25,000. Will consider selling components separately. Additional analytical and temperature holders available. **Gatan Model 607/666 PEELS** - asking \$20,000. Contact Jim Howe, Dept. Mater. Sci., Univ. of Virginia, Charlottesville, VA 22903; Ph: 804-982-5646, E-mail: jh9s@Virginia.edu.
- ✓ **Hitachi Model H-600 AB TEM** for sale. \$120K OBO. Excellent condition. Also available: **KeveX Delta Class Analyzer**. Willing to sell complete equipment from TEM/PLM/PCM laboratory. Microscopes, plasma asher, carbon coater, and more. Call 602-881-0037 or Fax inquiry to 602-327-1572.
- ✓ **MILITARY RESEARCH LAB IS CLOSING** - Military contractor is sell at drastically reduced prices its Sorvall MT-2B ultramicrotome, several Bausch and Lomb stereo microscopes and a Joyce Loebel (Mdl. 3C) and Perkin Elmer (Mdl. 1010G) microdensitometer for measuring minute differences in density changes. For spec. sheets call (202)544-0836.
- ✓ **JEOL 100C w/ KeveX 7000 spectrometer**. Also Philips / Edax 9100 / 60 X-ray microscope spectrometer. Must sell! Best offer! (601)264-9760.

EMPLOYMENT OPPORTUNITIES

- ✓ **Facility Research Assistant Electron Microscopy** - 1.00 FTE. Requires BS in biological science (MS preferred), training in biological lab instrumentation and protocol. Experience in EM tissue preparation is required. Responsible for histotechniques. Send letter, curriculum vitae and names, addresses, and phone numbers of three references to: Benita J. Pinz, Executive Assistant, College of Veterinary Medicine, OSU, Corvallis OR 97331-4801 before January 31, 1995. OSU EEO/AA EMPLOYER AND HAS A POLICY OF BEING RESPONSIVE TO THE NEEDS OF DUAL CAREER COUPLES.
- ✓ **WANTED** - Immediate opening for experienced EM service engineers for regions throughout the U.S. Send salary requirements and resume to Dr. Mark W. Rigler, MAS, Inc., 3597 Parkway Lane, Ste 250, Norcross, GA 30092 or call 1-800-421-8451.

State-of-the-art performance!

4pi's SPECTRAL ENGINE II

**DIGITAL IMAGING
X-RAY IMAGE MAPPING
& EDS**

for SEMs/STEMs/ESEMs

Macintosh/Power Macintosh-based
Powerful / High resolution
Easy to install and use
Direct acquisition
EDS for TEMs

4pi Analysis, Inc.

3500 Westgate Drive, Suite 403
Durham, NC 27707
919-489-1757 / 919-489-1487 (fax)

WANTED

ZEISS EM Series electron microscope electrical schematics. Will pay \$100 for each accepted set. Call (800)421-8451

Tricks of the Trade
Cleaning Procedures

Cleaning procedure for slides, coverslips, lens, mirrors, spectacles, 2 x 2 transparencies, black areas of black and white prints, etc. - I use one-sided transparent sticky tape: simply apply it to a surface evenly and remove. It leaves a greaseless, particle-free surface. If you don't believe it, wipe the end of your nose on a clean microscope slide, apply the tape over a part of the oily deposit and remove. It removes finger prints from any surface, even SEM prints. It won't remove old finger prints from valuable numismatic treasures but it stops their further action by removing any residual corrosive materials. A word of caution here - coins are pressed under high pressures to ensure a sharp strike and the top surface is quite unstable and subject to possible delamination by this technique. I know because I pulled a thin 2-3 mm² patch out of the surface of a valuable 1884 Morgan dollar recently. I had done the same thing to other coins many times before so it doesn't often happen but it could.

Reprinted from *Microscope*, 30:4; 258 (1982)

Twice As Precise

JSM-5800 Scanning Microscope Features Two Options for Optimum Control.



- Large Specimen Stage
- High/low vacuum capability
- Super Conical Objective Lens for high resolution

Suitable for a wide range of applications, the JSM-5800 from JEOL represents a new era in scanning microscopy. Now you have the option to choose either mouse or knobset control, while taking advantage of the super conical objective lens designed for the highest resolution (3.5nm) and large sample tilting.

- ▶ Easy-to-use unit has a wide range of built-in automatic functions.
- ▶ Large specimen stage allows room for up to an 8-inch sample.
- ▶ Archiving enables temporary or permanent storage and retrieval in standard TIF format.
- ▶ Five axis stage automation makes the JSM-5800 fast and easy-to-use.

Discover the twice as precise alternative that is as unique as your work itself.

To arrange for a demonstration of the innovative JSM-5800 call JEOL today.



JEOL USA, Inc., 11 Dearborn Road, Peabody, MA 01960 Tel: 508-535-5900 Fax: 508-536-2205 e-mail: eod@jeol.com

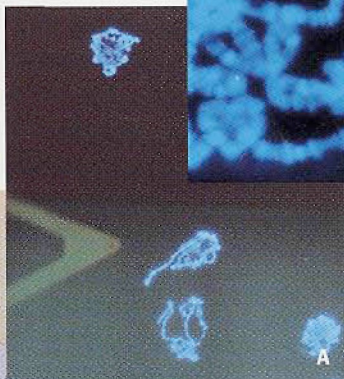
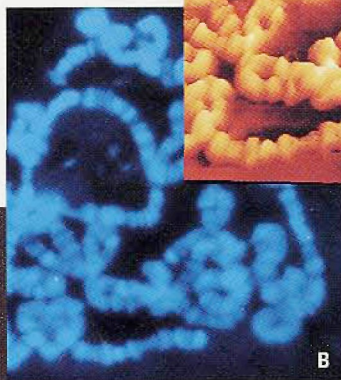
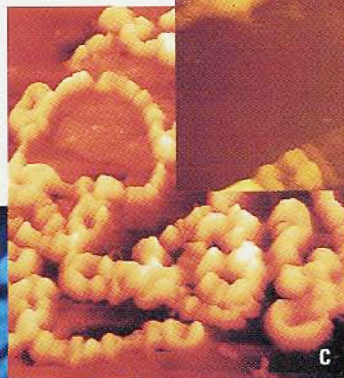
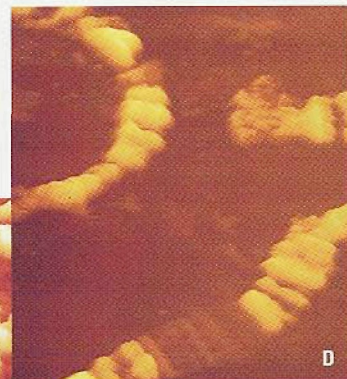
Circle Reader Inquiry #4

Now You Can Add Molecular Level Imaging To Your Inverted Optical Microscope

You don't hear about major advances in established scientific techniques very often. But that's exactly what Explorer LifeSciences SPM™ means to cell and molecular biologists...the high-resolution, three-dimensional imaging of a scanning probe microscope combined with the capability and familiarity of an inverted optical microscope.

Add an Explorer LifeSciences SPM head and baseplate adapter to almost any inverted optical microscope...Zeiss, Nikon, Olympus and more. Visually position the SPM probe over the sample precisely where you want it. Now you're ready to produce images with lateral definition and quantitative height information at molecular resolution. Images of unparalleled accuracy made under true physiological conditions with as little as 50µl of solution. And you'll be able to monitor the integrity of your sample with your inverted optical microscope the entire time you're scanning.

But great images aren't all you'll get with Explorer LifeSciences SPM. For example, it's the only SPM with *One-Pass Imaging™*. That gives you up to eight



channels of data simultaneously over scan

areas to 130µm square and 12µm in the Z range.

To learn just how easy it is to add SPM capability to your laboratory, call us

today at 1-800-765-5067. Just tell us which inverted optical microscope you have and we'll have product information on it's way to you fast.

The four images of polytene chromosome clusters show: visual positioning of the SPM probe tip (A); an optical microscope image (B); a 100µm atomic force microscope (AFM) image (C); a 50µm AFM image showing bands and interbands (D).

Explorer, Explorer LifeSciences SPM and One-Pass Imaging are trademarks of TopoMetric. Other trademarks and registered trademarks are the property of their respective owners.



5403 Betsy Ross Drive, Santa Clara, California, 95054
Tel 408-982-9700, Fax 408-982-9751

