

Long Form Research Paper

Cite this article: Jumbri IA, Managi S (2020). Inclusive wealth with total factor productivity: global sustainability measurement. *Global Sustainability* 3, e5, 1–16. <https://doi.org/10.1017/sus.2020.1>

Received: 10 June 2019

Revised: 13 December 2019


Accepted: 17 December 2019

Keywords:

economics; natural resources (biological and non-biological); social value

Author for correspondence: Prof Dr Shunsuke Managi, E-Mail: managi.s@gmail.com

Inclusive wealth with total factor productivity: global sustainability measurement

Isma Addi Jumbri^{1,2} and Shunsuke Managi^{3,4} 

¹Graduate School of Environmental Studies, Tohoku University, Sendai, Japan; ²Faculty of Technology Management & Technopreneurship, Universiti Teknikal Malaysia Melaka, Melaka, Malaysia; ³Urban Institute & Department of Civil and Environmental Engineering, School of Engineering, Kyushu University, 744 Motooka, Nishi-Ku, Fukuoka, 819-0395, Japan and ⁴Economic Institute, Fukuoka, Japan

Non-technical abstract

Wealth commonly refers to the measure of the value of all assets or capital owned by an individual, community, company or nation. Sustainable development requires that the per capita productive base or comprehensive wealth of an economy should at least not decline over a period of time. We present here a comprehensive assessment of cross-country productivity over a study period of 1990–2010 for 140 countries. We used the concept of inclusive wealth introduced by the United Nations to assess the social value, rather than dollar price, of all each country's assets, including produced, human and natural capital.

Technical abstract

This study extends the current measures of sustainability using inclusive wealth by capturing total factor productivity (TFP), which takes natural capital and other conventional inputs into consideration. For the inclusive wealth adjustment, we utilized the Malmquist Productivity Index to measure cross-country productivity over a study period of 1990–2010 for 140 countries. We found that incorporating TFP with natural capital has a significant impact on inclusive wealth as a sustainability measure. Natural capital, including oil capital gain related to the change in oil prices, also has a significant role to play in determining the productivity value of a country. In several countries, the decline in natural capital is not high enough to compensate for the increase in both human and produced capital. This finding enhances our understanding of how inclusive wealth adjusted by TFP can be considered as an economic policy evaluation and planning tool regarding countries' sustainability.

Social media summary

Sustainability can be assessed by non-declining inclusive wealth, which refers to produced, human and natural capital.

1. Introduction

In September 2015, the United Nations General Assembly adopted the 2030 Agenda for Sustainable Development Goals (SDGs). These goals range from responsible consumption and production, improvements in well-being, quality education and health to the protection of global assets, including oceans and a stable climate. As such, governments need a measure to monitor and judge whether the development programmes they undertake meet the SDGs (Dasgupta *et al.*, 2015). Even though gross domestic product (GDP) is viewed as a good measure of economic activity, GDP ignores social costs, environmental impacts and income inequality. Oleson (2011) also argued that GDP needs to be replaced by an alternative indicator if one wishes to measure real economic growth and well-being. We need indicators that promote truly sustainable development (i.e., development that improves the quality of human life while living within the carrying capacity of the supporting ecosystems; Costanza *et al.*, 2014).

Acknowledging the need for sustainability measurement, the United Nations University International Human Dimension Programme and United Nations Environment Programme (UNU-IHDP & UNEP, 2014) made use of the concept of inclusive wealth (IW), which is the social value (not dollar price) of all productive assets and measures the determinants of well-being. As such, sustainability can be defined as a positive change in human well-being that is represented by non-decreasing IW, which refers to human capital, produced capital and natural capital. This framework offers a theoretically consistent measure of wealth as a key to sustainability evaluation (Kurniawan & Managi, 2017).

© The Author(s) 2020. Published by Cambridge University Press. This is an Open Access article, distributed under the terms of the Creative Commons Attribution licence (<http://creativecommons.org/licenses/by/4.0/>), which permits unrestricted re-use, distribution, and reproduction in any medium, provided the original article is properly cited.

One of the indices closest to IW that covers both market and non-market assets is the World Bank's genuine savings (GS), formally known as adjusted net savings, which keeps track of savings in produced, human and natural capital (Yamaguchi *et al.*, 2019). It was introduced by Pearce and Atkinson (1993) and then adopted by Hamilton and Clemens (1999) and Arrow *et al.* (2004). Following this line of thinking, the IW approach was utilized by many stakeholders for the measurement of sustainability progress (see Polasky *et al.*, 2015; Sato *et al.*, 2018; Tokimatsu *et al.*, 2019; Yamaguchi *et al.*, 2019), while related studies (see Dasgupta, 2014; Duraipappah & Muñoz, 2012; Ikeda *et al.*, 2017; Kurniawan & Managi, 2019; Managi & Kumar, 2018) were structured around both market and non-market assets of all types of capital that contribute to well-being. In addition to cross-country studies, IW is also utilized to measure regional wealth and to assess sustainability development. For instance, Yamaguchi *et al.* (2016) measured the sustainability of Japan after the tsunami disaster at Miyagi Prefecture in 2011. In another instance, Acar and Gultekin-Karakas (2016) measured Turkey's sustainability development. Mota *et al.* (2010) estimated Portugal's sustainability development, and Ollivier and Giraud (2010) assessed the sustainability of Madagascar. The indicator that was used in all of these studies was very close to that of IW. This index is increasingly recognized as an indicator of sustainability (Yamaguchi & Managi, 2017).

Such an approach that calculates the amount of capital represents the productivity of well-being. It considers intergenerational well-being as a measure of sustainable development. In this formulation, a society's economic development is sustainable at a point of time if its wealth at constant shadow prices is non-decreasing. A non-declining IW implies the possibility of non-declining human well-being.

On the other hand, Arrow *et al.* (2004) argued that total factor productivity (TFP) plays an important role in the assessment of sustainability development by using GS. Utilizing TFP as an adjustment can provide a closer approximation of the real contribution of technological innovation and efficiency to production, as well as other implicit capital types that are not yet considered in assessing GS. By utilizing capital and labour as inputs, Arrow *et al.* (2004) found that the contribution of TFP to the GS growth rate is between 6.33% for China and -0.40% for the Middle East/North Africa. Arrow *et al.* (2012) also found that the contribution varied from -2.12% in Venezuela to 2.71% in China.

However, previous studies on utilizing TFP as an adjustment to IW ignored the contribution of natural capital as an input for productivity changes (Kurniawan & Managi, 2017). Recently, several researchers found that natural capital made a significant contribution to cross-country efficiency changes. Measuring environmental efficiency (EE) not only assesses the current state of the environment, but also provides valuable information for the improvement of environmental policies in the future. Brandt *et al.* (2017) reported that the failure to take natural capital into account tends to lead to an underestimation of productivity growth. Thus, various methods have been developed to measure EE across countries and within regions. For instance, Hoang and Nguyen (2013) suggested that the material balance-based EE method is useful in analysing possible trade-offs between cost and environmental performance. However, much of the EE method provides relative measures, which is a necessary, but not sufficient condition for achieving sustainability. At the same time, significant data limitations need also to be overcome before the EE method can be used to monitor progress towards

sustainable development. In addition, a study by Tang *et al.* (2017) found that EE has a significant effect on both environmental and non-environmental TFP. They found that there is significant effect of environmental regulations on China's TFP and economic development level.

To fill the gap that exists in incorporating natural capital into TFP as an adjustment of IW, this study considers natural capital, including oil capital gain and other conventional inputs in order to measure productivity. By considering these inputs, we can analyse how countries differ with respect to the effective utilization of their productive assets, and we can understand why the same productive base of a country could lead to an increase or decrease in aggregate output over time depending on productivity changes as a result of the ways in which resources are used. Some countries use their endowed capital efficiently with appropriate productivity changes and future-orientated stock consumption schemes, while others do not use their capital as efficiently as they should.

To achieve this, we used a deterministic non-parametric analysis called the Malmquist Productivity Index (MPI), which is based on data envelopment analysis (DEA). This methodology is widely used in the measurement of productivity (for reviews, see Coelli *et al.*, 1998; Färe *et al.*, 1994; Kerstens & Managi, 2012; Malik, 2015; Tanaka & Managi, 2013). According to Stern (2005), DEA is a linear programming technique that allows both the frontier and the distance from the frontier of each country to vary in every time period in an arbitrary manner. Therefore, MPI based on the distance function is suitable for assessing the relationship between multivariate inputs and outputs for 140 countries from 1990 to 2010. In addition, the measurement takes into account the efficiency of resources used and productivity changes.

This paper is organized by first providing an overview of the literature focusing on sustainability and wealth, highlighting previous empirical research on cross-country productivity and examining the evolution of the method, which adds to the contribution of this study. Section 3 describes the methodology and data. Section 4 presents empirical results and an efficiency decomposition. The final section draws conclusions and suggests possibilities for extending this research.

2. Empirical research

There are several empirical studies that provide evidence for sustainable development on the basis of the historical average or current level of GS. For instance, Hamilton and Clemens (1999) calculated the average GS for the 1970s and 1980s and provided some single-year values for the 1990s across countries. In order to determine whether each country was sustainable or not, they based their assessment on the GS indicator (either positive or negative).

Furthermore, Neumayer (2000) remodified the GS calculation method of the World Bank by introducing an alternative approach to computing resource depletion. He estimated the GS rates and considered their average as a benchmark of the sustainable development of a country. Based on his study of the World Bank database, he concluded that many Sub-Saharan African, Northern African and Middle Eastern regions would be considered unsustainable, in spite of the fact that, in reality, they were making a progress. Thus, he suggested that future research should find a better method for computing the net depreciation of the natural resource stock. In addition, Scheffer *et al.* (2000) also analysed the value of the ecosystem to society. They demonstrated

that it is possible to extend the GS model to environmental problems. Islam and Managi (2019) argued that natural capital, which comprises natural resources, including land, forest, minerals and fossil fuels, is important for sustainable development. This is because natural resources provide great benefits and significance, both explicitly and implicitly, which are crucial for promoting the progression of the economy and human welfare. The framework of sustainable development needs to expand its scope not only economically and socially, but also environmentally (Cléménçon, 2012). Therefore, natural capital can be considered as a core criterion of proponents of strong sustainability. The excessive use of natural capital may cause a decrease in sustainability. Depleting a type of natural capital and substituting it with another form of natural capital or with produced capital is not sustainable in the strong sense (Islam *et al.*, 2019).

On the other hand, there are several studies that have indicated that population growth can have an effect on IW, which refers in these cases to GS. For instance, Hamilton and Atkinson (2006) posited that positive GS or IW values depend strongly on population growth rates. Thus, Yamaguchi (2014) suggested the need to consider the effect of the population age distribution in IW accounting. Furthermore, Mumford (2016) focused on Asian countries and found that there is a strong relationship between growth in GDP per capita and IW per capita. Nonetheless, all of these studies excluded TFP in their measurements.

Previous studies, including Arrow *et al.* (2004) and the Inclusive Wealth Reports (UNU-IHDP & UNEP, 2012, 2014), have suggested that TFP plays an important role in assessing sustainability development according to the GS method. This is because sustainability can be assessed by non-declining GS, which refers to human-made capital, human capital, natural capital and other types of capital that are sources of human well-being (Sato *et al.*, 2018). The amount of GS is calculated based on the weighted summation of all types of capital using shadow prices. In their study, Arrow *et al.* (2004) used capital and labour as the inputs and GDP as the output. They adopted TFP by using the conventional method of calculating TFP and merged the TFP data on human capital and produced capital based on Collins and Bosworth (1996) and Klenow and Rodriguez-Clare (1997). The results indicated that the contribution of TFP per capita to genuine wealth is between -0.40% (Middle East/North Africa) and 6.33% (China). In addition, Arrow *et al.* (2012) found the contribution to be between -2.12% (Venezuela) and 2.71% (China). However, in both of these studies, the authors did not consider the contribution of natural capital as an input for productivity measures.

In any case, none of these studies attempted to make any adjustments to TFP regarding natural capital or even to consider natural capital as an explicit factor of input. According to Jorgenson and Griliches (1967), the adjustment of capital stock data reflects changes in capacity utilization (CU). For instance, Denison (1979) used the variation in capital share income, and Norsworthy *et al.* (1979) adjusted productivity by selecting intervals from which CU is believed to be nearly 1. Morrison (1985) attempted to adjust productivity changes by dividing productivity growth by cost for a CU measure.

Such results indicate a divergence in cross-country productivity, wealth and adjustment of capital stock productivity. However, to date, there has been no cross-country TFP analysis that considers natural capital as an explicit factor of input and includes oil capital gain as an adjustment. Several studies found that oil price plays a significant role in economic and productivity

measurement. For instance, a study by Hesary *et al.* (2013) found that oil-producing countries such as Iran and Russia benefit from oil price shocks. For oil-consuming economies, the effect is more diverse. Estrada and Hernández de Cos (2011) suggested that fluctuations in oil prices can significantly affect potential output. In this respect, Finn (2000) showed theoretically how, under certain conditions, a permanent increase in oil price lowers the equilibrium level of the capital stock in the long term.

Therefore, in this study, we provide a deeper analysis of how each input and output affects countries' performance and sustainability development by using an unconventional TFP measurement. Besides considering natural capital as an explicit factor of input, we incorporate oil capital gain as an adjustment to TFP.

3. Methodology and data

3.1. IW measurement

Aggregated capital is a term for inclusive investment, a key indicator of IW. According to Arrow *et al.* (2003), an economy enjoys sustainable development if and only if its IW is at a constant price or does not decline relative to its population. IW is a measure of intergenerational well-being, where the accumulation of wealth corresponds to sustained development and is a key to economic progress (Dasgupta, 2007). Thus, we can define IW at the time t as W_t , which includes produced, human and natural capital. This can be defined as:

$$W(t) = Q(t)t + \sum_i P_i(t) K_i(t) \\ = P_{PC}PC(t) + P_{HC}HC(t) + P_{NC}NC(t),$$

where $Q(t)$ is the shadow price of the time asset (TFP in our case). Each P is a shadow price of the capital asset, defined as $\delta W_t / \delta C$, where K is each capital, which is $PC(t)$, $HC(t)$ and $NC(t)$ representing produced capital, human capital and natural capital at time t , respectively. Therefore, the total capital asset comprises the resource base that is calculated by using the marginal contribution of each asset type to social welfare, which is represented by the social (or shadow) price of all of the assets under evaluation. This present value is called an asset's shadow price. Hence, an economy's IW is the shadow value of its productive base, and inclusive investment, $IW(t)$, is the shadow value of the net change in its productive base (Dasgupta, 2008). All capitals are evaluated on the basis of each of their own accounting prices in the current period. The IW should always be positive in order to be sustainable in the future, or at least not decline over a period of time; thus, the sustainability condition can be expressed as:

$$IW(t) \geq 0 \text{ for all } t(\text{time}).$$

3.2. TFP measurement

To measure cross-country productivity, we adopt the MPI as described by Coelli *et al.* (1998) and Färe *et al.* (1994) as a measurement of TFP in order to investigate whether there is any change in wealth when mapping capital assets (human capital, produced capital and natural capital). This is because the MPI is suitable for assessing the relationship between inputs and outputs under the multivariate input inefficiency. By using the MPI, technological progress and the inefficiency of resource use can

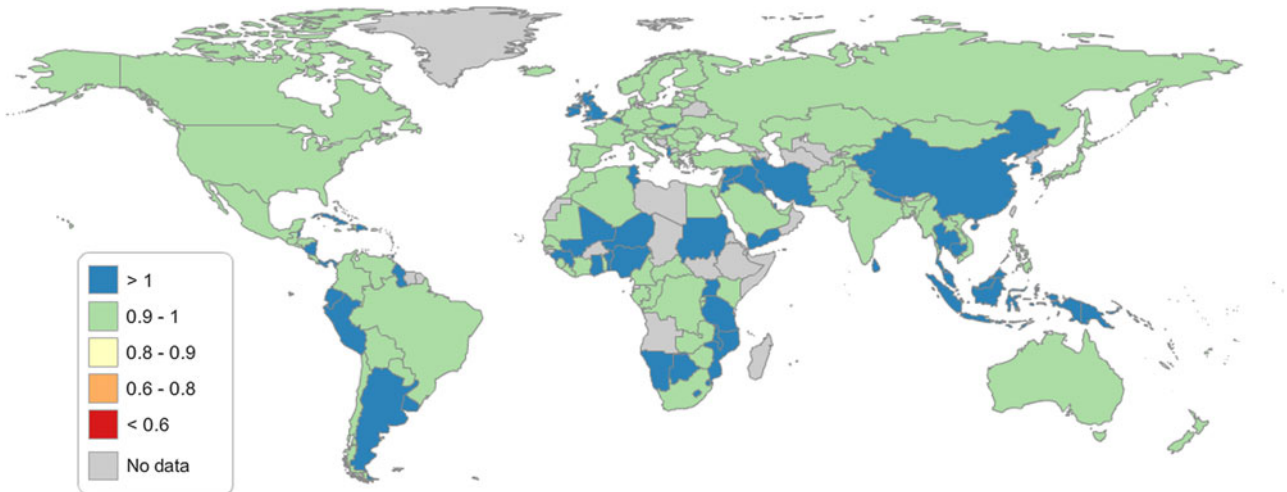


Fig. 1. Average of total factor productivity (TFP) for 140 countries (1990–2010).

also be estimated. Therefore, the MPI can be considered as the most suitable index for achieving the objectives of this research.

When calculating TFP, we applied produced, human and natural capital as a separate unit, with each capital as an input and GDP as an output. Because of the multivariate inputs (produced, human and natural capital), we adopted the non-parametric frontier analysis of DEA in order to measure TFP. By using the distance function specification, our problem can be formulated as follows:

$$T(t) \equiv \{(x_t, y_t) : x_t \text{ can produce } y_t\}. \quad (1)$$

In this case, $x = (x^1, \dots, x^M) \in R_+^M$ and $y = (y^1, \dots, y^N) \in R_+^N$ are the input and output vectors, respectively. The technology set is defined by Eq. (2), which consists of all feasible input vectors, x_t , and output vectors, y_t , at time t . According to Managi (2011), the estimation of efficiency relative to the production frontiers relies on the theory of distance or gauge functions. In economics, distance functions are related to the notion of the coefficient of resource utilization (Debreu, 1951) and to efficiency measures (Farrell, 1957). This distance function defined t as:

$$d^t(y_t, x_t) = \min\{\delta : (x_t, y_t/\delta) \in T(t)\}, \quad (2)$$

where δ is the maximal proportional amount to which y_t can be expanded given technology $T(t)$. DEA and the output-orientated function are used in order to estimate the distance function under constant returns to scale by solving the following optimization problem (Managi, 2003):

$$\begin{aligned} d_{T(t)}(x_t, y_t) &= \max_{\delta, \lambda} \delta \\ \text{s.t. } Y_t \lambda &\geq \frac{y_t}{\delta} \\ X_t \lambda &\leq x_t \\ \lambda &\geq 0. \end{aligned} \quad (3)$$

From Eq. (3), δ is the measure of efficiency for country i in year t , λ is an $N \times 1$ vector of weights and Y_t and inputs X_t are the vectors of outputs y_t and inputs x_t . In order to estimate

productivity over time, several distance functions are used for the input–output vector for period $t + 1$ and technology in period t . The MPI (M_0) for the output-orientated productivity index is as follows:

$$M_0(y_t, x_t, y_{t+1}, x_{t+1}) = \left[\frac{d_o^t(y_{t+1}, x_{t+1})}{d_o^t(y_t, x_t)} \times \frac{d_o^{t+1}(y_{t+1}, x_{t+1})}{d_o^{t+1}(y_t, x_t)} \right]^{\frac{1}{2}}. \quad (4)$$

In Eq. (4), d represents the geometric distance to the frontier, which can be decomposed into efficiency change (i.e., catching up to the frontier) and technological change (i.e., change in the production frontier) (Färe *et al.*, 1994). Based on this formula, a country on the frontier will perform better under the same resource constraints than a country that is further away from the frontier. The estimation of this is performed by using DEA, which is a non-parametric estimation method. M_0 can be divided into two components: efficiency change represents the first ratio, while technological change represents the second. Based on this formulation, we estimate the MPI and estimated IW as follows:

$$f: \{P_{PCPC}, P_{HCHC}, P_{NCNC}\} IW. \quad (5)$$

In this estimation, it is possible for two countries to have different levels of sustainable development, even if they have similar levels of capital assets. This is due to the fact that sustainable development is dependent not only on how the countries use their capital assets, but also on their different saving rates. The MPI is reformulated as follows:

$$\begin{aligned} M_0(GDP_{i,t}, PC_{i,t}, HC_{i,t}, NC_{i,t}, GDP_{i,t+1}, PC_{i,t+1}, HC_{i,t+1}, NC_{i,t+1}) \\ = \left[\frac{d^t(GDP_{i,t}, PC_{i,t+1}, HC_{i,t+1}, NC_{i,t+1})}{d^t(GDP_{i,t}, PC_{i,t}, HC_{i,t}, NC_{i,t})} \right. \\ \left. \times \frac{d^{t+1}(GDP_{i,t+1}, PC_{i,t+1}, HC_{i,t+1}, NC_{i,t+1})}{d^{t+1}(GDP_{i,t}, PC_{i,t}, HC_{i,t}, NC_{i,t})} \right]^{\frac{1}{2}}. \end{aligned} \quad (6)$$

Eq. (6) indicates the feasibility of producing goods with fewer inputs. Where d is the geometric distance to the production

Table 1. Ranking and summary of estimated total factor productivity (TFP).

Ranking	Country	TFP	Ranking	Country	TFP	Ranking	Country	TFP
1	Singapore	1.100	2	China	1.052	3	Trinidad and Tobago	1.038
4	Qatar	1.036	5	Nigeria	1.034	6	The United Republic of Tanzania	1.034
7	United Kingdom	1.032	8	Albania	1.030	9	Peru	1.025
10	Thailand	1.025	11	Cambodia	1.025	12	Mozambique	1.025
13	Argentina	1.024	14	Botswana	1.024	15	Mali	1.024
16	Uganda	1.024	17	Ghana	1.023	18	The Syrian Arab Republic	1.021
19	Tunisia	1.020	20	Yemen	1.020	21	Jordan	1.019
22	Namibia	1.018	23	Nepal	1.018	24	Iran	1.017
25	Malawi	1.017	26	Niger	1.017	27	Ecuador	1.016
28	Panama	1.016	29	Swaziland	1.016	30	Benin	1.016
31	Slovakia	1.015	32	Cuba	1.015	33	Dominican Republic	1.015
34	Belgium	1.014	35	Ireland	1.014	36	Maldives	1.014
37	Belize	1.014	38	Sri Lanka	1.014	39	Sudan	1.014
40	Lesotho	1.013	41	Nicaragua	1.013	42	Papua New Guinea	1.013
43	Kuwait	1.012	44	Guyana	1.012	45	The Republic of Korea	1.011
46	Malaysia	1.011	47	Uruguay	1.011	48	Indonesia	1.011
49	Iraq	1.011	50	Luxembourg	1.010	51	Norway	1.010
52	Armenia	1.010	53	Paraguay	1.010	54	Myanmar	1.010
55	Rwanda	1.010	56	Cyprus	1.009	57	Czech Republic	1.009
58	Greece	1.009	59	Brazil	1.009	60	Congo	1.009
61	Guatemala	1.009	62	Pakistan	1.009	63	Mauritania	1.009
64	Mauritius	1.008	65	Venezuela (The Bolivarian Republic of)	1.008	66	Cameroon	1.008
67	India	1.008	68	Philippines	1.008	69	Austria	1.007
70	Colombia	1.007	71	Côte d'Ivoire	1.007	72	Egypt	1.007
73	Finland	1.006	74	Israel	1.006	75	Algeria	1.006
76	El Salvador	1.006	77	Togo	1.006	78	Australia	1.005
79	Japan	1.005	80	Netherlands	1.005	81	New Zealand	1.005
82	Poland	1.005	83	Bulgaria	1.005	84	Costa Rica	1.005
85	Bolivia (Plurinational State of)	1.005	86	Honduras	1.005	87	Senegal	1.005
88	Sweden	1.004	89	Morocco	1.004	90	Iceland	1.003
91	Malta	1.003	92	South Africa	1.003	93	Mongolia	1.003
94	Bangladesh	1.002	95	Bahrain	1.001	96	Italy	1.001
97	Saudi Arabia	1.001	98	Chile	1.001	99	Romania	0.993
100	Fiji	1.001	101	Barbados	1.000	102	Canada	0.990
103	Afghanistan	1.000	104	The Central African Republic	1.000	105	Switzerland	0.999
106	United Arab Emirates (UEA)	0.999	107	Gabon	0.999	108	Turkey	0.999
109	Denmark	0.998	110	France	0.998	111	Germany	0.998
112	Slovenia	0.998	113	United States of America	0.998	114	Liberia	0.998

(Continued)

Table 1. (Continued.)

Ranking	Country	TFP	Ranking	Country	TFP	Ranking	Country	TFP
115	Estonia	0.997	116	Hungary	0.997	117	Burundi	0.997
118	Kenya	0.997	119	Mexico	0.996	120	Zambia	0.996
121	Spain	0.995	122	Jamaica	0.993	123	Lithuania	0.993
124	Russian Federation	0.993	125	Portugal	0.992	126	Kazakhstan	0.990
127	Loa People's Democratic Republic	0.990	128	Sierra Leone	0.989	129	Vietnam	0.988
130	Zimbabwe	0.987	131	Kyrgyzstan	0.985	132	Latvia	0.984
133	Croatia	0.981	134	The Republic of Moldova	0.981	135	The Democratic Republic of the Congo	0.980
136	Haiti	0.977	137	Tajikistan	0.975	138	Serbia	0.973
139	Gambia	0.968	140	Ukraine	0.966	Mean		1.007

frontier, it represents the best available technology for the given inputs and output. The country under analysis in this research refers to i , which runs from 1 to 140 countries in our sample. This index is measured by the ratio between 2 years; thus, a value greater than 1 represents an improvement or otherwise in the TFP calculation. Using this index allows us to examine TFP's contribution to IW by country.

3.3. IW adjusted by TFP measurement

By using the new TFP results and based on the IW methodology, we estimated each country's IW-TFP Adjusted for the years 1990–2010. We did so by using the annual average of IW per capita and estimated the percentage change of TFP on the IW as the sustainability indicator. In order to estimate the IW-TFP Adjusted, we calculated the growth rate of IW per capita. We also followed the same process as Arrow *et al.* (2004) with the compromise of the use of TFP growth from Collins and Bosworth (1996), which was based on GDP output. According to the framework of sustainable development, the IW-TFP Adjusted should be maintained at a positive and non-declining state. The calculation is as follows:

$$IW - TFP \text{ Adjusted} = IW + TFP,$$

where *IW-TFP Adjusted* is the inclusive wealth adjusted with total factor productivity, *IW* is the inclusive wealth growth per capita and *TFP* is the total factor productivity growth.

Based on the TFP results from 1990 to 2010, we measured not only IWI-TFP Adjusted, but also how countries' performance affected IW after three main factors were taken into consideration. Those three factors are as follows: (1) climate change, particularly the damage suffered as a result of increased atmospheric carbon; (2) TFP's contribution to multiple factors missing from economic growth; and (3) oil capital gains related to the change in oil prices, which may either increase or decrease a country's productivity value.

Based on the 2012 and 2014 Inclusive Wealth Reports (UNU-IHDP & UNEP, 2012, 2014), we refer to this adjusted figure as the Inclusive Wealth Index Adjusted (IWI Adjusted). We measured the change in wealth for 140 countries over 21 years

on a per capita basis. In order to estimate the change in wealth, we calculated the average annual growth rates in wealth and population. According to the framework of sustainable development, the IWI Adjusted should remain positive and non-declining. The calculation is as follows:

$$IWI \text{ Adjusted} = IW + C + E + TFP,$$

where *IWI Adjusted* is the Inclusive Wealth Index Adjusted, *IW* is the inclusive wealth per capita, *C* is the carbon damage, *E* is the energy depletion (i.e., oil capital gain) and *TFP* is the percentage of TFP growth.

Based on the adjustment set forth above, the IWI Adjusted can have either a positive or a negative effect on countries' IW. According to Nordhaus and Boyer (2000), climate change will benefit some countries, whereas others will experience a negative impact. In terms of oil price fluctuations, normally countries that are considered as oil producers will realize the advantages and positive changes in wealth compared to countries that depend on oil imports.

3.4. Data

For the sources of these data, we refer to the 2014 Inclusive Wealth Report published by UNU-IHDP and UNEP (2014). This dataset provides quantitative information on data for 140 countries from 1990 to 2010. As noted above, the accounting shadow balance sheet included as inputs here consists not only of produced capital and human capital, but also natural capital. To measure natural capital wealth, fossil fuels (oil, coal and natural gas), minerals (nickel, gold, silver, iron, lead, tin, zinc, phosphate, copper and bauxite), forest resources (timber and non-timber) and agricultural land (cropland and pastureland) are used. For human capital wealth, the calculation uses education attainment and the additional compensation over time as developed by Arrow *et al.* (2012). The BP Statistical Review of World Energy (BP, 2013) is used for the prices of coal, natural gas and oil. Equipment, machinery and road data are calculated for produced capital. In this research, we utilized GDP as an output. All capital wealth in this calculation is in millions, constant 2005 US dollars.

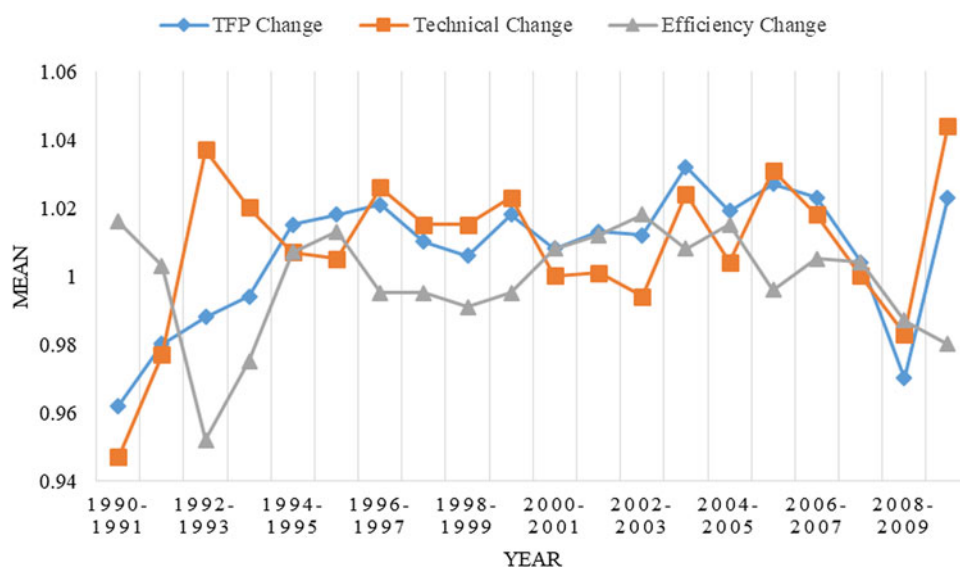


Fig. 2. Mean total factor productivity (TFP) change, efficiency change and technological change (1990–2010).

Table 2. Means of total factor productivity (TFP), efficiency change and technological change (1990–2010) based on regions.

Region	TFP change	Efficiency change	Technological change
Africa	1.008	1.004	1.005
Asia	1.010	1.000	1.010
Europe	1.001	0.990	1.011
Latin America and the Caribbean	1.009	1.001	1.008
North America	0.999	0.992	1.007
Oceania	1.006	1.000	1.006
Mean	1.007	0.999	1.008

4. Empirical results

4.1. Total factor productivity

Based on the estimating procedure explained in Section 3, we estimated each country's TFP, efficiency change and technological change for the 21 years included in the dataset. The means of each country's TFP change, efficiency change and technological change from 1990 to 2010 are presented in Figure 1 and Table 1.

Table 1 and Figure 1 show the TFP changes for the 140 countries from 1990 to 2010. The countries in Table 1 are presented in descending order based on the magnitude of TFP changes. Table 1 shows Singapore and China as the two countries with the highest TFP growth. Singapore shows a 10.0% average growth in TFP (caused by steady growth in efficiency) and a 10.0% growth in technological change. The high TFP growth of Singapore has contributed to its rapid economic development. According to Han (2017), the rapid economic development of Singapore can be attributed to its technocratic strategy and its environmental policy, which have led to its international reputation as a model green city due to its remarkable expansion of green spaces and infrastructure. Australia, the UK, India and

Japan demonstrated TFP growth rates of 0.5%, 3.2%, 0.8% and 0.5%, respectively. The unweighted average growth in TFP across the 140 countries was 0.7%.

Figure 2 shows the annual mean TFP change, technological change and efficiency change over the entire study period (1990–2010) for the 140 countries. On average, TFP values increased in many countries throughout the period of study. The worst TFP change during the study period was from 2008 to 2009 and is attributable to the global financial crisis. The greatest technological and efficiency changes were in 1992–1993 and 2002–2003, respectively.

Table 2 shows the mean TFP change, efficiency change and technological change results based on the different regions from 1990 to 2010. It is clear that Asia demonstrated the greatest TFP growth (1.0%), followed by Latin America and the Caribbean (0.9%). North America showed the lowest (and decreasing) TFP, followed by Europe (0.1%).

Figure 3 shows the cumulative TFP indices from 1990 to 2010 based on six regions. Asia clearly experienced the greatest cumulative growth, especially in 2010, followed by Africa, Latin America and the Caribbean. North America and Oceania were at the bottom, whereas Asia still experienced the greatest cumulative growth compared to global growth in TFP. According to Cléménçon (1997), economic integration and free trade might have been the factors that further boosted the economic growth of Asian countries, especially in the Association of Southeast Asian Nations (ASEAN). Sonnenfeld and Mol (2006) argued that the Asia-Pacific region is unquestionably one of the most economically dynamic areas in the world. For instance, countries such as China, India, Malaysia, Vietnam and Thailand demonstrated steady economic growth over the two decades, even while facing the financial crisis of the late 1990s.

4.2. IW-TFP Adjusted

Using the results of the new TFP and based on the method described in Section 3, we estimated each country's IW-TFP Adjusted for 1990–2010. In this study, we used each annual per capita IW and estimated the percentage change in TFP on the

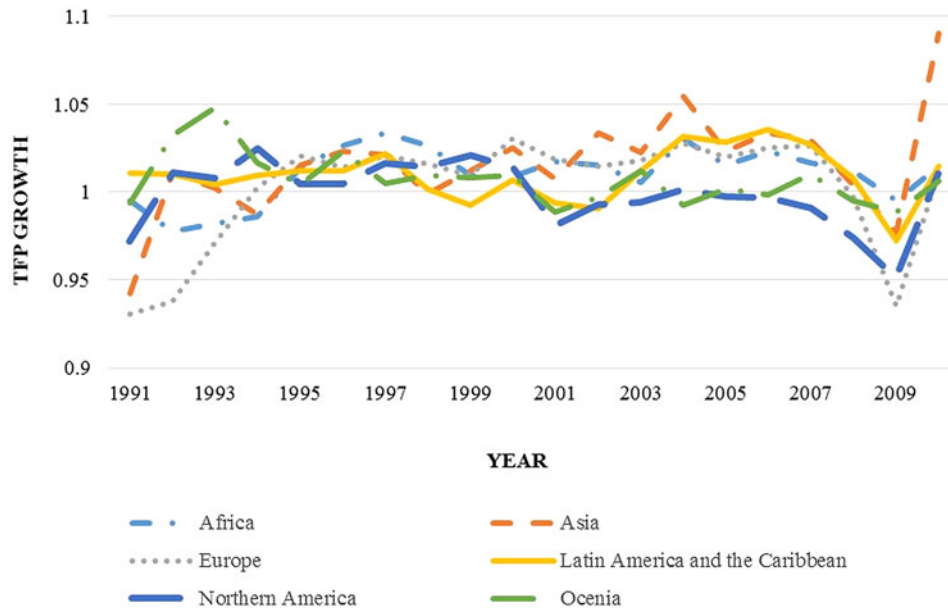


Fig. 3. Mean total factor productivity (TFP) change in six regions (1990–2010).

IW as an indicator of sustainable development. We calculated the growth rate of per capita IW in order to estimate the IW-TFP Adjusted. We followed the same process as in Arrow *et al.* (2004) through the use of TFP growth from Collins and Bosworth (1996), which is based on GDP output. The results for the IW-TFP Adjusted are shown in Table 3.

Table 3 shows the post-IW-TFP adjustment figures for the 140 countries over 21 years from 1990 to 2010. Table 3 demonstrates that among those 140 countries, 100 countries, representing 71% of nations, showed a positive IW-TFP Adjusted. Before adjustment, 85 countries demonstrated positive IW; after modification, 25 countries moved from the negative to the positive bracket, and only 10 nations experienced the reverse. Belize, Benin, Botswana, Cambodia, Colombia, Côte d'Ivoire, Ecuador, Ghana, Guyana, Indonesia, Iran, Malawi, Mali, Mozambique, Namibia, Nepal, Nicaragua, Niger, Nigeria, Peru, the Syrian Arab Republic, Tanzania, Trinidad and Tobago, Uganda and Yemen moved from negative to positive. Croatia, Gambia, Haiti, Jamaica, Kazakhstan, Kenya, Kyrgyzstan, the Russian Federation, Serbia and Ukraine moved from positive to negative. The movement of several countries from negative to positive positions proved that TFP can also be considered as one of the factors that has an impact on these results. Figures 4 and 5 show the percentages of growth rate (per capita) on IW before and after TFP adjustment.

4.3. IWI Adjusted

We also measured how countries' performance was affected by three main factors (carbon damage, oil capital gains and TFP) that were taken into consideration for the adjustment. We refer to this new adjustment as IWI Adjusted and measure all of the countries in the sample on a per capita basis. We also calculated the annual average growth rate in wealth and population in order to estimate the change in wealth.

Before the new adjustment, 55 countries experienced negative growth per capita IW, representing almost 39% of the 140 countries in this study. A total of 85 out of the 140 countries showed a

positive growth rate in wealth, representing almost 77% of the total sample. After adjusting three main factors (carbon damage, oil capital gains and the latest TFP results), the number of countries showing positive growth rates in wealth increased from 85 to 101. Twenty-seven countries moved from the negative to the positive bracket after the wealth adjustment. The following 11 countries moved from the positive to the negative bracket after all three factors were taken into consideration: Croatia, Gambia, Haiti, Jamaica, Kenya, Kyrgyzstan, Latvia, Portugal, the Russian Federation, Serbia and Ukraine. Of the 140 countries, 40 (almost 29%) remained in the negative bracket after the adjustment. These 40 countries were confronted by long-term issues related to sustaining their current consumption patterns.

Figures 6 and 7 show that the following 27 countries moved from the negative to the positive bracket after all three factors were adjusted: Algeria, Botswana, Cambodia, Colombia, Ecuador, Ghana, Guyana, Indonesia, Iran, Iraq, Kuwait, Malawi, Mali, Namibia, Nicaragua, Niger, Nigeria, Peru, Qatar, Saudi Arabia, Sudan, the Syrian Arab Republic, Trinidad and Tobago, Uganda, the United Republic of Tanzania, Venezuela and Yemen. Both Figures 6 and 7 show the percentages of growth rate (per capita) on IW before and after the three-component adjustment.

Among the three main factors, TFP had the largest contribution by moving 25 countries from the negative to the positive bracket after the energy depletion factor took oil capital gains into consideration. In the case of climate change, most of the countries in this study experienced a negative impact. Thus, TFP can be considered as one of the factors that significantly contributes to several countries' movement from the negative to the positive bracket. Table 4 shows the results of TFP Adjusted per capita after three main factors were taken into consideration (as explained in Section 3.3) and its percentage change.

4.4. G7 countries

In this study, we also learned something about the major development economies of the G7 countries. There are seven countries in

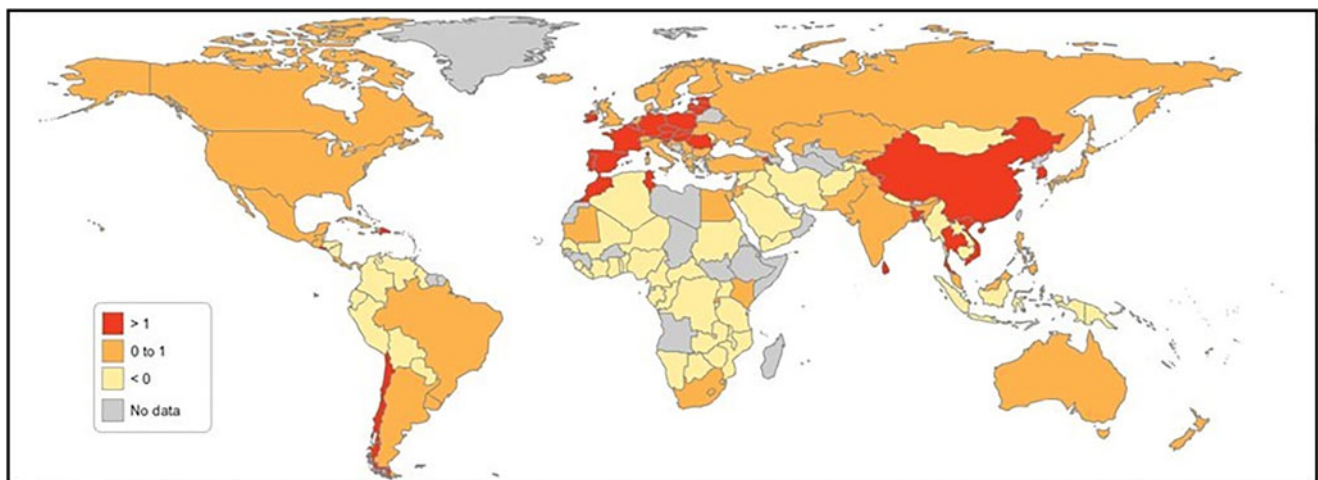
Table 3. Result of inclusive wealth with total factor productivity adjusted (IW-TFP Adjusted) per capita and percentage of change.

Country	After adjusted	Change	Country	After adjusted	Change
Afghanistan	-0.825	-0.8%	Liberia	-3.565	-3.6%
Albania	3.759	3.8%	Lithuania	0.594	0.6%
Algeria	-0.156	-0.2%	Luxembourg	2.521	2.5%
Argentina	2.724	1.3%	Malawi	0.389	0.4%
Armenia	2.027	2.0%	Malaysia	1.538	1.5%
Australia	0.829	0.8%	Maldives	4.652	4.6%
Austria	1.841	1.8%	Mali	0.768	0.7%
Bahrain	0.943	0.9%	Malta	1.954	1.9%
Bangladesh	1.629	1.6%	Mauritania	1.190	1.2%
Barbados	0.623	0.6%	Mauritius	2.094	2.1%
Belgium	2.439	2.4%	Mexico	0.516	0.5%
Belize	0.006	0.01%	Mongolia	-0.910	-0.9%
Benin	0.313	0.3%	Morocco	1.519	1.5%
Bolivia	-1.593	-1.5%	Mozambique	0.022	0.02%
Botswana	2.203	2.2%	Myanmar	-0.326	-0.3%
Brazil	1.013	1.0%	Namibia	1.001	1.0%
Bulgaria	1.451	1.5%	Nepal	0.199	0.2%
Burundi	-0.413	-0.4%	Netherlands	1.428	1.4%
Cambodia	1.146	1.1%	New Zealand	0.980	1.0%
Cameroon	-0.987	-1.0%	Nicaragua	0.674	0.6%
Canada	0.282	0.3%	Niger	0.611	0.6%
The Central African Republic	-2.095	-2.1%	Nigeria	1.565	1.6%
Chile	1.224	1.2%	Norway	1.299	1.3%
China	7.163	7.2%	Pakistan	1.557	1.6%
Colombia	0.605	0.6%	Panama	2.219	2.2%
Congo	-1.809	-1.8%	Papua New Guinea	-1.468	-1.5%
Costa Rica	1.298	1.3%	Paraguay	-0.143	-0.1%
Côte d'Ivoire	0.160	0.2%	Peru	1.928	1.9%
Croatia	-0.974	-1.0%	Philippines	1.307	1.3%
Cuba	1.616	1.6%	Poland	1.618	1.6%
Cyprus	1.891	1.9%	Portugal	0.216	0.2%
Czech Republic	2.166	2.2%	Qatar	-0.496	-0.5%
The Democratic Republic of the Congo	-4.736	-4.7%	The Republic of Korea	3.467	3.4%
Denmark	0.291	0.3%	The Republic of Moldova	-2.082	-2.1%
Dominican Republic	2.519	2.5%	Romania	1.129	1.2%
Ecuador	0.641	0.6%	Russian Federation	-0.554	-0.6%
Egypt	1.357	1.4%	Rwanda	1.635	1.6%
El Salvador	2.188	2.2%	Saudi Arabia	-1.278	-1.3%
Estonia	1.422	1.4%	Senegal	-0.546	-0.5%
Fiji	0.802	0.8%	Serbia	-1.966	2.0%
Finland	1.294	1.3%	Sierra Leone	-1.990	-2.0%
France	0.888	0.8%	Singapore	11.923	12.0%
Gabon	-1.820	-1.8%	Slovakia	2.642	2.6%

(Continued)

Table 3. (Continued.)

Country	After adjusted	Change	Country	After adjusted	Change
Gambia	-3.169	3.2%	Slovenia	1.157	1.2%
Germany	1.276	1.3%	South Africa	0.395	0.4%
Ghana	1.534	1.5%	Spain	1.418	1.4%
Greece	1.889	1.9%	Sri Lanka	2.588	2.5%
Guatemala	1.175	1.2%	Sudan (former)	-0.201	-0.2%
Guyana	1.107	1.1%	Swaziland	1.929	1.9%
Haiti	-1.363	-1.4%	Sweden	1.034	1.0%
Honduras	-0.135	-0.1%	Switzerland	0.337	0.3%
Hungary	0.992	1.0%	The Syrian Arab Republic	1.783	1.8%
Iceland	0.329	0.3%	Tajikistan	-3.562	-3.6%
India	1.557	1.6%	Thailand	3.752	3.7%
Indonesia	1.080	1.0%	Togo	-0.023	-0.02%
Iran	0.977	1.0%	Trinidad and Tobago	3.590	3.6%
Iraq	-1.886	-1.9%	Tunisia	3.137	3.1%
Ireland	2.936	2.9%	Turkey	0.816	0.8%
Israel	1.488	1.5%	Uganda	2.064	2.1%
Italy	0.903	0.9%	Ukraine	-3.002	-3.0%
Jamaica	-0.027	-0.03%	The United Arab Emirates	-3.315	-3.3%
Japan	1.406	1.4%	United Kingdom	4.055	4.1%
Jordan	2.608	2.6%	The United Republic of Tanzania	1.046	1.0%
Kazakhstan	-0.670	-0.7%	United States of America	0.401	0.4%
Kenya	-0.095	-0.1%	Uruguay	1.844	1.8%
Kuwait	-0.278	-0.3%	Venezuela	-0.312	-0.3%
Kyrgyzstan	-1.341	-1.3%	Vietnam	0.735	0.7%
Lao People's Democratic Republic	-2.536	-2.5%	Yemen	1.590	1.5%
Latvia	0.111	0.1%	Zambia	-2.779	-2.8%
Lesotho	2.205	2.2%	Zimbabwe	-2.438	-2.4%

**Fig. 4.** Percentage of growth rate (per capita) on inclusive wealth before IW-TFP Adjusted.

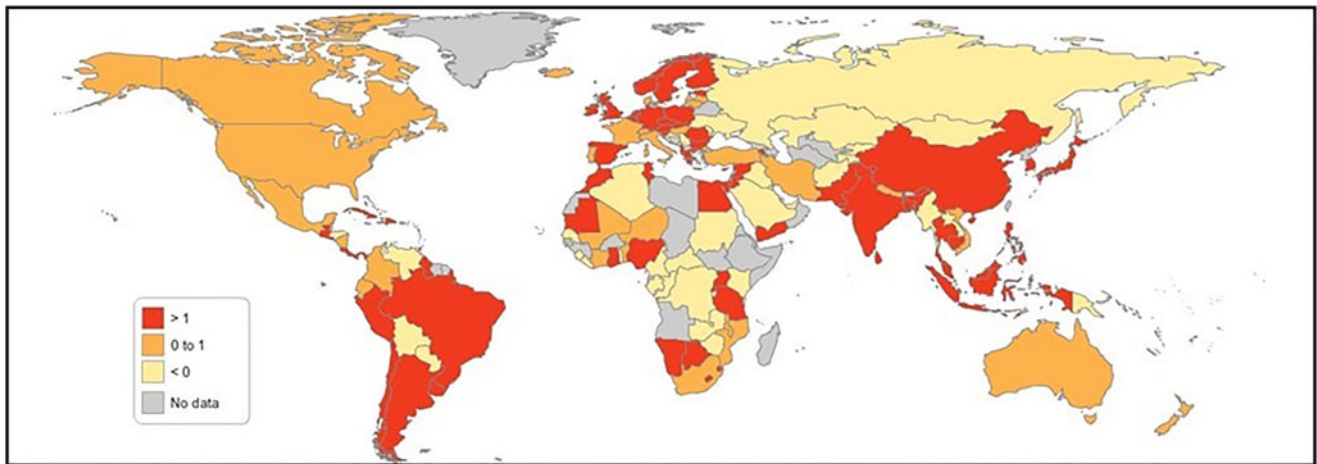


Fig. 5. Percentage of growth rate (per capita) on inclusive wealth after IW-TFP Adjusted.

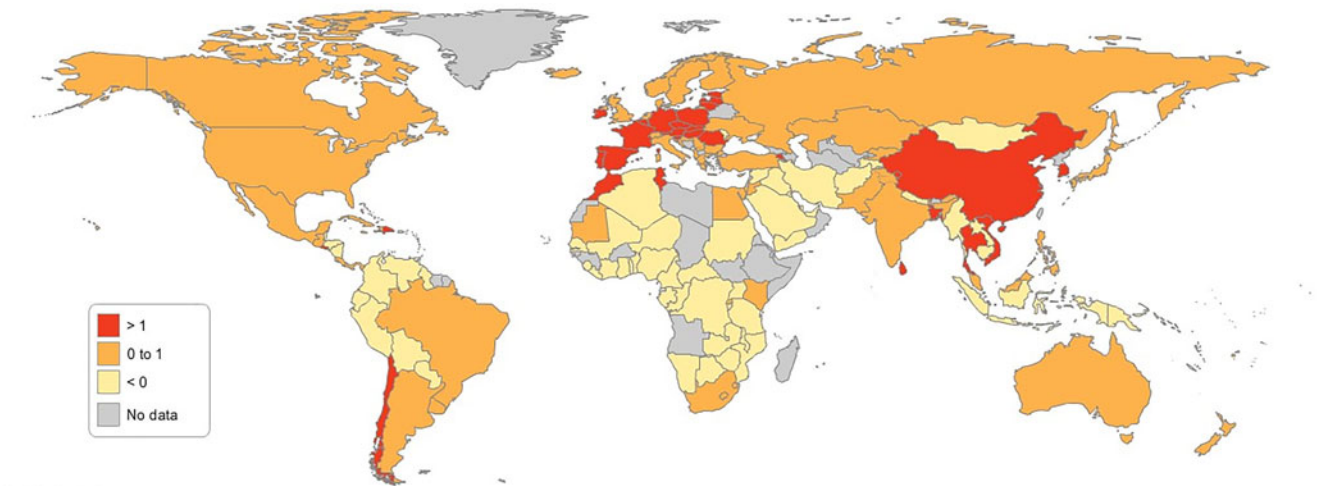


Fig. 6. Percentage of growth rate (per capita) on inclusive wealth before IWI Adjusted.

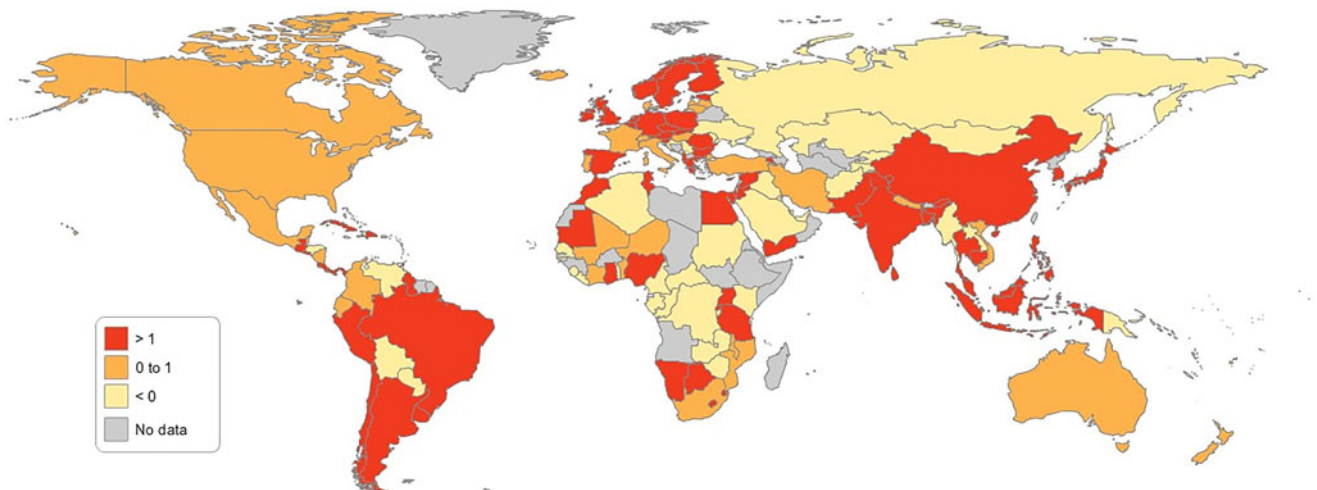


Fig. 7. Percentage of growth rate (per capita) on inclusive wealth after IWI Adjusted.

Table 4. Results after total factor productivity adjusted (TFP Adjusted) per capita and percentage of change.

Country	After adjusted	Change	Country	After adjusted	Change
Afghanistan	-1.025	-1.0%	Liberia	-3.566	-3.7%
Albania	3.535	3.5%	Lithuania	0.248	0.2%
Algeria	0.667	0.6%	Luxembourg	1.964	2.0%
Argentina	2.492	2.5%	Malawi	0.089	0.1%
Armenia	1.164	1.1%	Malaysia	1.363	1.4%
Australia	0.751	0.7%	Maldives	3.936	4.0%
Austria	1.566	1.6%	Mali	0.642	0.6%
Bahrain	0.622	0.6%	Malta	1.366	1.4%
Bangladesh	1.332	1.3%	Mauritania	0.504	0.5%
Barbados	0.329	0.3%	Mauritius	1.571	1.6%
Belgium	2.058	2.1%	Mexico	0.087	0.1%
Belize	-0.333	-0.3%	Mongolia	-1.005	-1.0%
Benin	-0.021	-0.02%	Morocco	1.154	1.2%
Bolivia	-1.630	-1.6%	Mozambique	-0.076	-0.1%
Botswana	1.905	1.9%	Myanmar	-0.478	-0.5%
Brazil	0.810	0.8%	Namibia	0.843	0.8%
Bulgaria	0.993	1.0%	Nepal	-0.001	-0.001%
Burundi	-0.671	-0.7%	Netherlands	1.034	1.0%
Cambodia	-0.871	-0.9%	New Zealand	0.831	0.8%
Cameroon	-1.076	-1.1%	Nicaragua	0.233	0.2%
Canada	1.077	1.1%	Niger	0.381	0.4%
Central African Republic	-2.130	-2.1%	Nigeria	3.501	3.5%
Chile	0.853	0.8%	Norway	1.473	1.5%
China	6.942	7.0%	Pakistan	1.140	1.1%
Colombia	0.509	0.5%	Panama	1.430	1.4%
Congo	-1.201	-1.2%	Papua New Guinea	-1.521	-1.5%
Costa Rica	1.018	1.0%	Paraguay	-0.324	-0.3%
Côte d'Ivoire	-0.077	-0.1%	Peru	1.803	1.8%
Croatia	-1.166	-1.2%	Philippines	0.711	0.7%
Cuba	0.886	0.9%	Poland	1.426	1.4%
Cyprus	1.444	1.4%	Portugal	-0.078	-0.1%
Czech Republic	1.964	2.0%	Qatar	3.526	3.5%
Democratic Republic of the Congo	-4.755	-4.8%	Republic of Korea	2.921	3.0%
Denmark	0.070	0.1%	Republic of Moldova	-2.501	-2.5%
Dominican Republic	2.018	2.0%	Romania	0.883	1.0%
Ecuador	1.618	1.6%	Russian Federation	-0.400	-0.4%
Egypt	0.904	0.9%	Rwanda	1.205	1.2%
El Salvador	1.756	1.8%	Saudi Arabia	2.204	2.2%
Estonia	1.171	1.1%	Senegal	-1.004	-1.0%
Fiji	0.307	0.3%	Serbia	-2.049	-2.0%
Finland	1.002	1.0%	Sierra Leone	-2.352	-2.4%
France	0.605	0.6%	Singapore	10.804	11.0%
Gabon	-1.083	-1.1%	Slovakia	2.448	2.4%

(Continued)

Table 4. (Continued.)

Country	After adjusted	Change	Country	After adjusted	Change
Gambia	-3.709	-3.7%	Slovenia	0.962	1.0%
Germany	0.991	1.0%	South Africa	0.115	0.1%
Ghana	1.058	1.1%	Spain	1.110	1.1%
Greece	1.442	1.4%	Sri Lanka	2.226	2.2%
Guatemala	0.864	0.9%	Sudan (former)	-1.185	-1.2%
Guyana	1.024	1.0%	Swaziland	1.714	1.7%
Haiti	-1.845	-1.8%	Sweden	0.737	0.7%
Honduras	-0.449	-0.4%	Switzerland	0.171	0.2%
Hungary	0.797	0.8%	Syrian Arab Republic	1.428	1.4%
Iceland	0.099	0.1%	Tajikistan	-4.670	-4.7%
India	1.169	1.2%	Thailand	3.117	3.1%
Indonesia	0.822	0.8%	Togo	-0.414	-0.4%
Iran	3.349	3.3%	Trinidad and Tobago	3.778	3.8%
Iraq	3.946	4.0%	Tunisia	2.891	2.9%
Ireland	2.591	2.6%	Turkey	0.509	0.5%
Israel	1.267	1.3%	Uganda	1.645	1.6%
Italy	0.577	0.6%	Ukraine	-3.257	-3.3%
Jamaica	-0.657	-0.7%	United Arab Emirates	-0.030	-0.03%
Japan	1.231	1.2%	United Kingdom	3.805	3.8%
Jordan	1.629	1.6%	United Republic of Tanzania	0.792	0.8%
Kazakhstan	0.536	0.5%	United States of America	0.182	0.2%
Kenya	-0.518	-0.5%	Uruguay	1.533	4.4%
Kuwait	6.694	6.7%	Venezuela	2.005	2.0%
Kyrgyzstan	-1.970	-2.0%	Vietnam	0.400	0.4%
Lao People's Democratic Republic	-2.564	-2.6%	Yemen	1.913	1.9%
Latvia	-0.190	-0.2%	Zambia	-2.860	-2.9%
Lesotho	2.008	2.0%	Zimbabwe	-2.753	-2.8%

the G7: Canada, Japan, France, Germany, Italy, the UK and the USA. Figure 8 shows the wealth composition of the G7 countries from 1990 to 2010. Most of the G7 countries have human capital advantages that can be considered as major contributors to their TFP and economic growth. In the case of Canada, its natural capital represents the second-highest wealth contribution after human capital, representing 31% of Canada's IW. The UK's growth in productivity contributes more than its human capital. This success can be attributed to tougher competition in the product and labour markets, an increase in higher education and the faster adoption of information, communication and innovation policies (Aghion *et al.*, 2013).

The combination of human and produced capital in Japan has supported its growth and efficiency increase in other components throughout the study period. This is due to the fact that labour productivity in Japan after 1995 has been attributed to a compositional shift in the labour market to increase the amount of higher-quality labour due to a greater demand for higher education (Chun *et al.*, 2015). The UK has the highest amount of human capital in the G7 at 78% of total wealth, followed by

France at 73%. Therefore, human capital is the foremost contributor to the IW growth rates for all of the G7 countries. On average, human capital contributed to 68% of overall IW, whereas produced capital contributed to 25% and natural capital contributed to 7% if we look at all of the G7 countries as a single group.

The TFP growth of the G7 countries has undergone a powerful revival since 1990, as is depicted in Figure 9. The TFP growth rate, which considers natural capital as an input, shows that the UK's TFP growth rate pattern has increased. The UK's TFP growth based on IW in 1990–1991 occur as rapidly as France and Germany, but its progress continued from 1992 to 2010. Although France and Germany started the 20-year period ahead of the UK, the UK finished ahead by 2010. The trend in TFP growth among the G7 countries since the mid-1990s has attracted significant attention because labour productivity growth represents an important factor in economic growth stability (Jablanovic, 2012).

The UK's TFP growth exceeded that of the USA from 1992. Although the entire G7 suffered during the financial crisis of 2008–2009, the UK continued to enjoy the greatest TFP growth

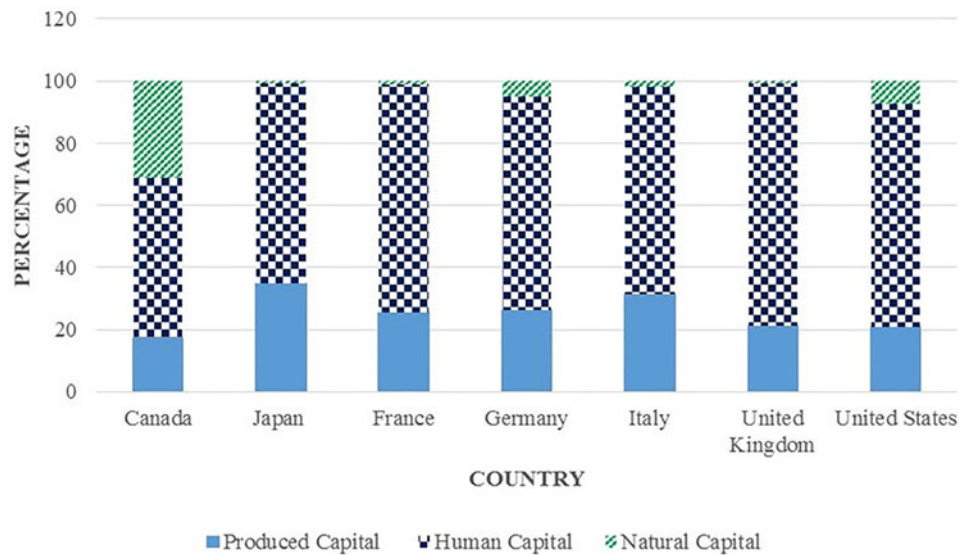


Fig. 8. Percentage of wealth composition of the G7 countries (1990–2010).

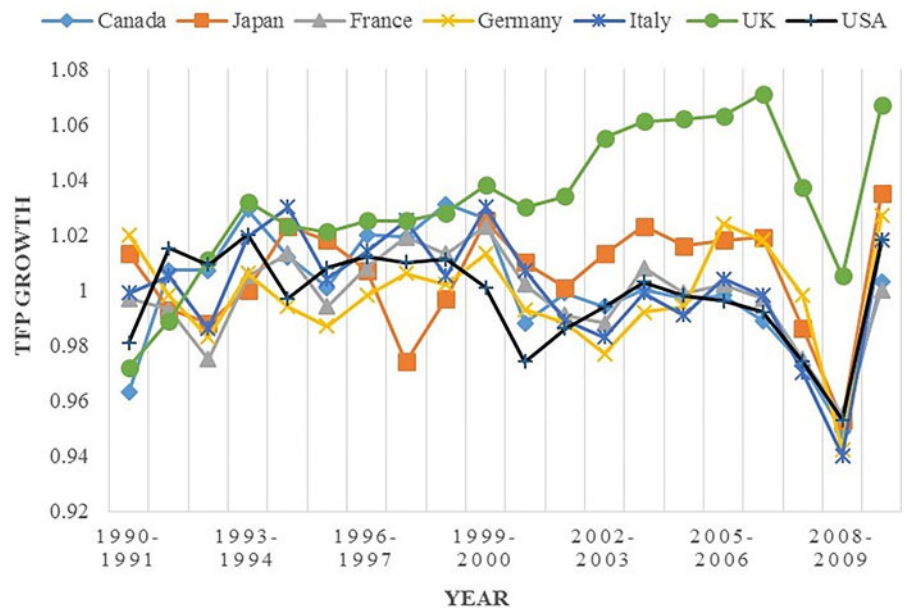


Fig. 9. Total factor productivity (TFP) growth of the G7 countries (1990–2010).

in the G7. From 2005 to 2010, TFP growth for most of the G7 countries was slowed considerably by the global financial and economic crisis of 2008–2009. Recovery from the Great Recession of 2007–2009 by the USA, Japan, Canada and the four European economies of the G7 has been slow and irregular (Jorgenson & Khuong, 2013). The Asian currency and financial crises of 1997 and 1998 affected Japan's TFP growth more than that of the other G7 countries because Japan is the only Asian country in the G7. Japan recovered from the Asian financial crisis, and in 1999, Japan's TFP growth was greater than that of France, Germany and the USA. Japan's TFP growth was revived from 2000 to 2010, and Italy showed the weakest performance during the global crisis.

5. Conclusion

This study has combined the concept of IW, including natural capital, as an input with an adjustment of oil capital gain in

productivity measurement. We utilized the MPI in order to measure cross-country productivity accounting during the 1990–2010 study period.

The TFP results from using GDP as an output and IW (human, produced and natural capital) as an input showed significantly different results from conventional residual-type or GDP production function-type TFP calculations among the 140 countries. The growth in TFP also depends on the contribution of two components, namely countries' efficiency change and technological change. Meanwhile, natural capital, including oil capital gain related to the change in oil prices, is significant in influencing the productivity value of a country.

In this study, for most countries, we found that the contribution of human and produced capital is greater and contributes more to productivity than the contribution of natural capital from 1990 to 2010. However, the loss of natural capital is not high enough to compensate for both human and produced capital. Therefore, it is suggested, for example, that countries

investing in natural capital should compensate for human capital development and non-renewable natural capital depletion and return to a sustainable agenda. For instance, in the Russian case, there was a significant link between global oil prices and the productivity output of the Russian economy. It is suggested that countries such as Russia need to reduce the dependence of their economy on the global trade environment, especially oils or fuels, in order to achieve sustainable development.

This study also presents several important findings for economic policy evaluation and planning. In general, a country must target not only GDP growth as a primary policy objective, but also move towards incorporating IW into the measurement of TFP for a country's sustainable development that is striving to improve the citizens' 'well-being'. This finding suggests that IW is useful in assessing sustainable development. For future studies, more sophisticated research with an expanded dataset is needed, such as research that includes more countries, years and factors (e.g., renewable energy stock and health in human capital).

Acknowledgements. IAJ received scholarship support from the Malaysian Ministry of Higher Education (MoHE) and Universiti Teknikal Malaysia Melaka (UTeM) throughout the study period.

Author contributions. IAJ and SM developed the concept and design of the study. IAJ conducted the study, participated in the data collection, analysed and interpreted the data and wrote the manuscript. IAJ and SM critically revised and edited the draft of the manuscript. All authors have read and approved the final version of the manuscript.

Financial support. This work was funded by the Grant-in-Aid for Specially Promoted Research (26000001) by the Japan Society for the Promotion of Science. We also thank the Japanese Ministry of the Environment for financial support through the Environment Research and Technology Development Fund (S-14, S-15, S-16) and Policy Research of Environmental Economics FY2018–2020.

Conflict of interest. None.

Ethical standards. This research and article complies with *Global Sustainability's* publishing ethics guidelines.

References

- Acar, S. & Gultekin-Karakas, D. (2016). Questioning Turkey's 'miracle' growth from a sustainability perspective. *Journal of Environment & Development*, 25(2), 131–158.
- Aghion, P., Beesley, T., Browne, J., Caselli, F., Lambert, R., Lomax, R., ..., van Reenen, J. (2013). Investing for prosperity: skills, infrastructure and innovation. London School of Economics, Centre for Economic Performance. Retrieved from <http://www.lse.ac.uk/researchAndExpertise/units/growthCommission/documents/pdf/LSEGC-Report.pdf>.
- Arrow, K. J., Dasgupta, P. & Mäler, K. G. (2003). Evaluating projects and assessing sustainable development in imperfect economies. *Environmental and Resource Economics*, 26(4), 647–685.
- Arrow, K., Dasgupta, P., Goulder, L., Daily, G., Ehrlich, P., Heal, G., ..., Walker, B. (2004). Are we consuming too much? *Journal of Economic Perspectives*, 18(3), 147–172.
- Arrow, K. J., Goulder, L. H., Mumford, K. J. & Oleson, K. (2012). Sustainability and the measurement of wealth. *Environmental and Development Economics*, 17, 317–353.
- BP (2013). Statistical review of world energy 2013. Retrieved from <http://www.bp.com/statisticalreview>.
- Brandt, N., Schreyer, P. & Zipperer, V. (2017). Productivity measurement with natural capital. *Review of Income and Wealth*, 63, S7–S21.
- Chun, H., Tsutomu, M., Pyo, H. K. & Konomi, T. (2015). Do intangibles contribute to productivity growth in East Asian countries? Evidence from Japan and Korea. RIETI Discussion Paper Series 15-E-055. Retrieved from <http://www.rieti.go.jp/jp/publications/dp/15e055.pdf>.
- Cléménçon, R. (1997). Economic integration and the environment in Southeast Asia: securing gains from open markets while preventing further degradation. *Journal of Environment & Development*, 6(3), 317.
- Cléménçon, R. (2012). Welcome to the anthropocene: Rio + 20 and the meaning of sustainable development. *Journal of Environment & Development*, 21(3), 311–338.
- Coelli, T., Rao, D. P. & Battese, G. E. (1998). *An Introduction to Efficiency and Productivity Analysis*. Kluwer Academic Publishers.
- Collins, S. M. & Bosworth, B. P. R. (1996). Economic growth in East Asia: accumulation versus assimilation. *Brookings Papers on Economic Activity*, 1996(2), 135–203.
- Costanza, R., Kubiszewski, I., Giovannini, E., Lovins, H., McGlade, J., Pickett, K. E., ..., Wilkinson, R. (2014). Development: time to leave GDP behind. *Nature*, 505(7483), 283–285.
- Dasgupta, P. (2007). Measuring sustainable development: theory and application. *Asian Development Review*, 24(1), 1–10. Retrieved from <https://pdfs.semanticscholar.org/5174/d6cad7d3b132c2e3aa1e5693e8675e36a8cb.pdf>.
- Dasgupta, P. (2008). Nature in economics. *Environmental and Resource Economics*, 39(1), 1–7.
- Dasgupta, P. (2014). Measuring the wealth of nations. *Annual Review of Resource Economics*, 6, 17–31.
- Dasgupta, P., Duraipappah, A., Managi, S., Barbier, E., Collins, R., Fraumeni, B., ..., Mumford, K. J. (2015). How to measure sustainable progress. *Science*, 350(6262), 748–748.
- Debreu, G. (1951). The coefficient of resource utilization. *Econometrica*, 19(3), 273–292.
- Denison, E. F. (1979). Explanations of declining productivity growth. *Survey of Current Business*, 59(8), 1–24.
- Duraipappah, A. K. & Muñoz, P. (2012). Inclusive wealth: a tool for the United Nations. *Environment and Development Economics*, 17(3), 362–367.
- Estrada, A. & Hernández de Cos, P. (2011). Oil prices and their effect on potential output. *Applied Economics Letters*, 19(3), 207–214.
- Färe, R., Grosskopf, S., Norris, M. & Zhongyang, Z. (1994). Productivity growth, technical progress, and efficiency change in industrialized countries. *American Economic Review*, 84(1), 66–83.
- Farrell, M. J. (1957). The measurement of productive efficiency. *Journal of the Royal Statistical Society. Series A (General)*, 120(3), 253–290.
- Finn, M. G. (2000). Perfect competition and the effects of energy price increases on economic activity. *Journal of Money, Credit and Banking*, 32(3), 400–416.
- Hamilton, K. & Atkinson, G. (2006). *Wealth, Welfare and Sustainability: Advances in Measuring Sustainable Development*. Edward Elgar Publishing.
- Hamilton, K. & Clemens, M. (1999). Genuine savings rates in developing countries. *The World Bank Economic Review*, 13(2), 333–356.
- Han, H. (2017). Singapore, a garden city. *Journal of Environment & Development*, 26(1), 3–24.
- Hoang, V. N. & Nguyen, T. T. (2013). Analysis of environmental efficiency variations: a nutrient balance approach. *Ecological Economics*, 86, 37–46.
- Ikeda, S., Tamaki, T., Nakamura, H. & Managi, S. (2017). Inclusive wealth of regions: the case of Japan. *Sustainability Science*, 12(6), 991–1006.
- Islam, M. & Managi, S. (2019). Resources, conservation & recycling green growth and pro-environmental behavior: sustainable resource management using natural capital accounting in India. *Resources, Conservation & Recycling*, 145, 126–138.
- Islam, M., Yamaguchi, R., Sugiawan, Y. & Managi, S. (2019). Valuing natural capital and ecosystem services: a literature review. *Sustainability Science*, 14(1), 159–174.
- Jablanovic, V. D. (2012). Labour productivity and the chaotic economic growth model: G7 Vesna. *Chinese Business Review*, 11(5), 500–510.
- Jorgenson, D. W. & Griliches, Z. (1967). The explanation of productivity change. *Review of Economic Studies*, 34(3), 249.
- Jorgenson, D. W. & Vu, K. M. (2013). The emergence of the new economic order: growth in the G7 and the G20. *Journal of Policy Modeling*, 35(3), 389–399.
- Kerstens, K. & Managi, S. (2012). Total factor productivity growth and convergence in the petroleum industry: empirical analysis testing for convexity. *International Journal of Production Economics*, 139(1), 196–206.

- Klenow, P. J. & Rodriguez-Clare, A. (1997). The neoclassical revival in growth economics: has it gone too far? NBER Macroeconomics Annual (Vol. 12). Retrieved from <https://www.nber.org/chapters/c11037.pdf>.
- Kurniawan, R. & Managi, S. (2017). Sustainable development and performance measurement: global productivity decomposition. *Sustainable Development*, 25(6), 639–654.
- Kurniawan, R. & Managi, S. (2019). Linking wealth and productivity of natural capital for 140 countries between 1990 and 2014. *Social Indicators Research*, 141(1), 443–462.
- Malik, S. K. (2015). Measurement of technological change in India's textile machinery industry using the Malmquist Productivity Index. *Margin: The Journal of Applied Economic Research*, 9(2), 179–203.
- Managi, S. (2003). Luenberger and Malmquist productivity indices in Japan, 1955–1995. *Applied Economics Letters*, 10(9), 581–584.
- Managi, S. (2011). *Technology, Natural Resources and Economic Growth: Improving the Environment for a Greener Future*. Edward Elgar Publishing.
- Managi, S., & Kumar, P. (2018). *Inclusive Wealth Report 2018: Measuring Progress towards Sustainability*. Routledge.
- Morrison, C. J. (1985). On the economic interpretation and measurement of optimal capacity utilization with anticipatory expectations. *Review of Economic Studies*, 52(2), 295–310.
- Mota, R. P., Domingos, T. & Martins, V. (2010). Analysis of genuine saving and potential green net national income: Portugal, 1990–2005. *Ecological Economics*, 69(10), 1934–1942.
- Mumford, K. J. (2016). Prosperity, sustainability and the measurement of wealth. *Asia & the Pacific Policy Studies*, 3(2), 226–234.
- Neumayer, E. (2000). Resource accounting in measures of unsustainability. *Environmental and Resource Economics*, 15(3), 257–278.
- Nordhaus, W. D. & Boyer, J. (2000). *Warming the World: Economic Model for Global Warming*. MIT Press.
- Norsworthy, J., Harper, M. & Kunze, K. (1979). The slowdown in productivity growth: analysis of some contributing factors. *Brookings Papers on Economic*, 2, 387–421.
- Oleson, K. L. L. (2011). Shaky foundations and sustainable exploiters: problems with national weak sustainability measures in a global economy. *Journal of Environment & Development*, 20(3), 329–349.
- Ollivier, T. & Giraud, P.-N. (2010). The usefulness of sustainability indicators for policy making in developing countries: the case of Madagascar. *Journal of Environment & Development*, 19(4), 399–423.
- Pearce, D. & Atkinson, G. (1993). Capital theory and the measurement of sustainable development: an indicator of 'weak' sustainability. *Ecological Economics*, 8, 103–108.
- Polasky, S., Bryant, B., Hawthorne, P., Johnson, J., Keeler, B. & Pennington, D. (2015). Inclusive wealth as a metric of sustainable development. *Annual Review of Environment and Resources*, 40(1), 445–466.
- Sato, M., Tanaka, K. & Managi, S. (2018). Inclusive wealth, total factor productivity, and sustainability: an empirical analysis. *Environmental Economics and Policy Studies*, 20(4), 741–757.
- Scheffer, M., Brock, W. & Westley, F. (2000). Socioeconomic mechanisms preventing optimum use of ecosystem services: an interdisciplinary theoretical analysis. *Ecosystems*, 3(5), 451–471.
- Sonnenfeld, D. A. & Mol, A. P. J. (2006). Environmental reform in Asia. *Journal of Environment & Development*, 15(2), 107–111.
- Stern, D. I. (2005). Beyond the environmental Kuznets curve: diffusion of sulfur-emissions-abating technology. *Journal of Environment & Development*, 14(1), 101–124.
- Taghizadeh-Hesary, F., Yoshino, N., Abdoli, G., & Farzinvas, A. (2013). An estimation of the impact of oil shocks on crude oil exporting economies and their trade partners. *Frontiers of Economics in China*, 8(4), 571–591.
- Tanaka, K. & Managi, S. (2013). Measuring productivity gains from deregulation of the Japanese urban gas industry. *Energy Journal*, 34(4), 181–198.
- Tang, D., Tang, J., Xiao, Z., Ma, T. & Bethel, B. J. (2017). Environmental regulation efficiency and total factor productivity – effect analysis based on Chinese data from 2003 to 2013. *Ecological Indicators*, 73, 312–318.
- Tokimatsu, K., Dupuy, L. & Hanley, N. (2019). Using genuine savings for climate policy evaluation with an integrated assessment model. *Environmental and Resource Economics*, 72(1), 281–307.
- UNU-IHDP & UNEP (2012). *Inclusive Wealth Report 2012: Measuring Progress towards Sustainability*. Cambridge University Press.
- UNU-IHDP & UNEP (2014). *Inclusive Wealth Report 2014: Measuring Progress towards Sustainability*. Cambridge University Press.
- Yamaguchi, R. (2014). Inclusive wealth with a changing but aging population. *Economics Letters*, 124(1), 21–25.
- Yamaguchi, R. & Managi, S. (2017). New financing for sustainable development. *Journal of Environment & Development*, 26(2), 214–239.
- Yamaguchi, R., Islam, M., & Managi, S. (2019). Inclusive wealth in the twenty-first century: a summary and further discussion of Inclusive wealth report 2018. *Letters in Spatial and Resource Sciences*, 12(2), 101–111.
- Yamaguchi, R., Sato, M. & Ueta, K. (2016). Measuring regional wealth and assessing sustainable development: an application to a disaster-torn region in Japan. *Social Indicators Research*, 129(1), 365–389.