

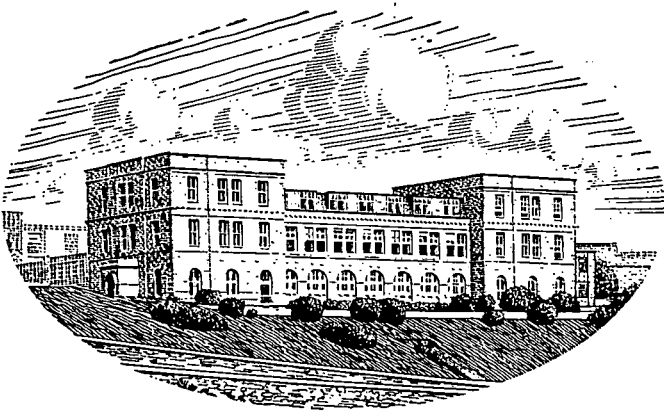
**JOURNAL OF THE  
MARINE BIOLOGICAL ASSOCIATION  
OF THE UNITED KINGDOM**

PUBLISHED BY  
THE SYNDICS OF THE CAMBRIDGE UNIVERSITY PRESS

Bentley House, 200 Euston Road, London, N.W. 1  
American Branch: 32 East 57th Street, New York 22, N.Y.

*Printed in Great Britain at the University Press, Cambridge  
(Brooke Crutchley, University Printer)*

**JOURNAL OF THE  
MARINE BIOLOGICAL ASSOCIATION  
OF THE UNITED KINGDOM**



THE PLYMOUTH LABORATORY

**VOLUME 42**

**1962**

**CAMBRIDGE  
AT THE UNIVERSITY PRESS**

**1962**

*The Council of the Marine Biological Association wish it to be understood that they do not accept responsibility for the accuracy of statements published in this Journal, excepting when those statements are contained in an official report of the Council.*

# CONTENTS OF VOLUME 42

NUMBER 1, pp. 1-129, 21 FEBRUARY 1962

NUMBER 2, pp. 131-468, 26 JUNE 1962

NUMBER 3, pp. 469-776, 19 OCTOBER 1962

	PAGE
Report of the Council: 1961-62 . . . . .	709
Income and Expenditure Account and Balance Sheet: 1961-62 . . . . .	733
List of Governors, Founders, Members, Honorary and Associate Members . . . . .	737
ALEXANDROWICZ, J. S. . . . .	
An accessory organ of the circulatory system in <i>Sepia</i> and <i>Loligo</i> . . . . .	405
ALLEN, J. A. . . . .	
Preliminary experiments on the feeding and excretion of bivalves using <i>Phaeodactylum</i> labelled with <sup>32</sup> P . . . . .	609
ANSELL, A. D. . . . .	
The functional morphology of the larva, and the post-larval development of <i>Venus striatula</i> (Da Costa) . . . . .	419
ARMSTRONG, F. A. J. and BUTLER, E. I. . . . .	
Chemical changes in sea water off Plymouth during 1960 . . . . .	253
Hydrographic surveys off Plymouth in 1959 and 1960 . . . . .	445
ATKINS, D. and RUDWICK, M. J. S. . . . .	
The lophophore and ciliary feeding mechanisms of the brachiopod <i>Crania anomala</i> (Müller) . . . . .	469
BAGENAL, T. B. . . . .	
The fecundity of plaice from the coasts of Norway . . . . .	105
BERNER, ÅGOT . . . . .	
Feeding and respiration in the copepod <i>Temora longicornis</i> (Müller) . . . . .	625
BINYON, J. . . . .	
Ionic regulation and mode of adjustment to reduced salinity of the starfish <i>Asterias rubens</i> L. . . . .	49
BONEY, A. D. and CORNER, E. D. S. . . . .	
The effect of light on the growth of sporelings of the intertidal red alga <i>Plumaria elegans</i> (Bonnem.) Schm. . . . .	65
On the effects of some carcinogenic hydrocarbons on the growth of sporelings of marine red algae . . . . .	579
BRYAN, G. W. and WARD, EILEEN . . . . .	
Potassium metabolism and the accumulation of <sup>137</sup> Caesium by decapod Crustacea . . . . .	199
BUTLER, E. I., <i>see</i> ARMSTRONG and BUTLER . . . . .	253, 445
CARLISLE, D. B. . . . .	
On the venom of the lesser weeverfish, <i>Trachinus vipera</i> . . . . .	155
CLARKE, G. L., CONOVER, R. J., DAVID, C. N. and NICOL, J. A. C. . . . .	
Comparative studies of luminescence in copepods and other pelagic marine animals . . . . .	541

	PAGE
COLLYER, DOROTHY M.	
Method for determination of fat percentage in unicellular algae . . . . .	485
CONOVER, R. J., <i>see</i> CLARKE <i>et al.</i> . . . . .	541
CORNER, E. D. S., <i>see</i> BONEY and CORNER . . . . .	65, 579
COUPLAND, ANNE C.	
The taxonomy of monogenean gill parasites from <i>Scyliorhinus canicula</i> and <i>Raia clavata</i> at Plymouth . . . . .	521
DALES, R. PHILLIPS	
The nature of the pigments in the crowns of sabellid and serpulid polychaetes . . . . .	259
DAVID, C. N., <i>see</i> CLARKE <i>et al.</i> . . . . .	541
FONTAINE, A. R.	
The colours of <i>Ophiocomina nigra</i> (Abildgaard). I. Colour variation and its relation to distribution . . . . .	I
The colours of <i>Ophiocomina nigra</i> (Abildgaard). II. The occurrence of melanin and fluorescent pigments . . . . .	9
The colours of <i>Ophiocomina nigra</i> (Abildgaard). III. Carotenoid pigments . . . . .	33
FORSTER, G. R.	
Observations on the ormer population of Guernsey . . . . .	493
GEE, J. M. and KNIGHT-JONES, E. W.	
The morphology and larval behaviour of a new species of <i>Spirorbis</i> (Serpulidae) . . . . .	641
HOLDEN, M. J. and MEADOWS, P. S.	
The structure of the spine of the spur dogfish ( <i>Squalus acanthias</i> L.) and its use for age determination . . . . .	179
KAIN, JOANNA M.	
Aspects of the biology of <i>Laminaria hyperborea</i> . I. Vertical distribution . . . . .	377
KEARN, G. C.	
Breathing movements in <i>Entobdella soleae</i> (Trematoda, Monogenea) from the skin of the common sole . . . . .	93
KNIGHT-JONES, E. W., <i>see</i> DE SILVA and KNIGHT-JONES . . . . .	601
<i>see</i> GEE and KNIGHT-JONES . . . . .	641
LANCE, JOAN	
Effects of water of reduced salinity on the vertical migration of zooplankton . . . . .	131
LEWIS, J. G. E.	
The ecology, distribution and taxonomy of the centipedes found on the shore in the Plymouth area . . . . .	655
LLEWELLYN, J.	
The life histories and population dynamics of monogenean gill parasites of <i>Trachurus trachurus</i> (L.) . . . . .	587
MANTON, IRENE and PARKE, MARY	
Preliminary observations on scales and their mode of origin in <i>Chrysochromulina polylepis</i> sp.nov. . . . .	565
<i>see also</i> PARKE and MANTON . . . . .	391

	PAGE
MARSHALL, S. M. and ORR, A. P. Carbohydrate as a measure of phytoplankton . . . . .	511
MCINTYRE, A. D. The class Kinorhyncha (Echinoderida) in British waters . . . . .	503
MEADOWS, P. S., <i>see</i> HOLDEN and MEADOWS . . . . .	179
MURRAY, J. W. A new bottom-water sampler for ecologists . . . . .	499
NICOL, J. A. C., <i>see</i> CLARKE <i>et al.</i> . . . . .	541
ORR, A. P., <i>see</i> MARSHALL and ORR . . . . .	511
PARKE, MARY and MANTON, IRENE Studies on marine flagellates. VI. <i>Chrysochromulina pringsheimii</i> sp.nov. . . . . <i>see also</i> MANTON and PARKE . . . . .	391 565
RAYNS, D. G. Alternation of generations in a coccolithophorid, <i>Cricosphaera carterae</i> (Braarud & Fagerl.) Braarud . . . . .	481
REDDIAH, KOSARAJU The sexuality and spawning of Manx pectinids . . . . .	683
ROBERTS, M. B. V. The rapid response of <i>Myxicola infundibulum</i> (Grübe) . . . . .	527
RUDWICK, M. J. S., <i>see</i> ATKINS and RUDWICK . . . . .	469
RUSSELL, F. S. On the scyphomedusa <i>Poralia rufescens</i> Vanhöffen . . . . .	387
SHELBOURNE, J. E. . . . . A predator-prey size relationship for plaice larvae feeding on <i>Oikopleura</i> . . . . .	243
SILVA, P. H. D. H. DE and KNIGHT-JONES, E. W. <i>Spirorbis corallinae</i> n.sp. and some other Spirorbinae (Serpulidae) common on British shores . . . . .	601
SOUTHWARD, A. J. On the behaviour of barnacles. IV. The influence of temperature on cirral activity and survival of some warm-water species . . . . . The distribution of some plankton animals in the English Channel and approaches. II. Surveys with the Gulf III high-speed sampler, 1958-60 . . . . .	163 275
WARD, EILEEN, <i>see</i> BRYAN and WARD . . . . .	199
WIESER, WOLFGANG Adaptations of two intertidal isopods. I. Respiration and feeding in <i>Naesa bidentata</i> (Adams) (Sphaeromatidae) . . . . .	665
YONGE, C. M. On the primitive significance of the byssus in the Bivalvia and its effects in evolution . . . . .	113

ABSTRACTS OF MEMOIRS	
RECORDING WORK DONE AT THE PLYMOUTH LABORATORY	
	PAGE
ALLAN, T. D., 1961. A magnetic survey in the western English Channel . . . . .	127
ARMSTRONG, F. A. J. and BOALCH, G. T., 1961. Ultra-violet absorption of sea water	465
BAKER, P. F., HODGKIN, A. L. and SHAW, T. I., 1961. Replacement of the protoplasm of a giant nerve fibre with artificial solutions . . . . .	127
COOPER, L.-H. N., 1961. Vertical and horizontal movements in the ocean . . . . .	465
DALES, R. P., 1961. The coelomic and peritoneal cell systems of some sabellid poly- chaetes . . . . .	465
ENDEAN, R., 1961. The test of the ascidian, <i>Phallusia mammillata</i> . . . . .	127
KLEINHOLZ, L. H., BURGESS, P. R., CARLISLE, D. B. and PFLUEGER, O., 1962. Neuro- secretion and crustacean retinal pigment hormone: distribution of the light-adapting hormone . . . . .	705
MURRAY, R. W., 1961. The initiation of cutaneous nerve impulses in elasmobranch fishes . . . . .	465
MURRAY, R. W., 1962. The response of the ampullae of Lorenzini of elasmobranchs to electrical stimulation . . . . .	705
OLDFIELD, E., 1961. The functional morphology of <i>Kellia suborbicularis</i> (Montagu), <i>Montacuta ferruginosa</i> (Montagu) and <i>M. substriata</i> (Montagu), (Mollusca, Lamelli- branchiata) . . . . .	128 128
PARKE, M., 1961. Some remarks concerning the Class Chrysophyceae . . . . .	466
PARKE, M. and ADAMS, I. 1961. The <i>Pyramimonas</i> -like motile stage of <i>Halosphaera</i> <i>viridis</i> Schmitz . . . . .	128
PARKE, M., LUND, J. W. G. and MANTON, I., 1962. Observations on the biology and fine structure of the type species of <i>Chrysochromulina</i> ( <i>C. parva</i> Lackey) in the English Lake District . . . . .	705
PAUTSCH, F., 1961. The larval chromatophoral system of the crab, <i>Carcinus maenas</i> (L.)	706
ROBSON, E. A., 1961. A comparison of the nervous systems of two sea-anemones, <i>Calliactis parasitica</i> and <i>Metridium senile</i> . . . . .	466
ROSS, D. M. and SUTTON, L., 1961. The response of the sea anemone <i>Calliactis</i> <i>parasitica</i> to shells of the hermit crab <i>Pagurus bernhardus</i> . . . . .	466
SHAW, T. I., 1959. The mechanism of iodide accumulation by the brown sea weed <i>Laminaria digitata</i> . The uptake of <sup>131</sup> I. . . . .	129
SHAW, T. I., 1960. The mechanism of iodide accumulation by the brown sea weed <i>Laminaria digitata</i> . II. Respiration and iodide uptake . . . . .	129
SOUTHWARD, E. C., 1961. Pogonophora . . . . .	467
WICKSTEAD, J. H., 1961. A quantitative and qualitative study of some Indo-West- Pacific plankton . . . . .	467
BOOK REVIEWS	
<i>Physical Oceanography</i> . By ALBERT DEFANT . . . . .	468
<i>Physical Oceanography of the Southeast Asian Waters</i> . By KLAUS WYRTKI . . . . .	707
<i>Monogenetic Trematodes, their Systematics and Phylogeny</i> . By B. E. BYCHOWSKY . . . . .	707



# CORRIGENDA

## VOL. 41

Page 809, Fig. 9, in horizontal side-heading of graph, and in the legend, *for later read earlier.*

Page 810, Fig. 10, in the first of the four explanatory statements (i.e. on the relation between herring recruitment and winter P. . .), *for Inverse read Direct*; in the second statement *for Direct read Inverse*; in the third statement *for Inverse read Direct.*

## VOL. 42

Page 114, line 19, *for Xyloxyra read Xylotrya.*

Page 538, line 7, *for Harmothøe read Harmothø.*

Page 552, line 4, *for luminuos read luminous.*

Page 579, 17 lines from bottom, *Basidiomycetes* should not be in italic type.

Page 725, line 7, *for norvegicus read norvegica.*

Number 1, back page of cover, lines 2 and 4, *for Abilgaard read Abildgaard.*

# THE MARINE BIOLOGICAL ASSOCIATION OF THE UNITED KINGDOM

THE ASSOCIATION was founded in 1884 to promote accurate researches leading to the advancement of zoological and botanical science and to an increase in our knowledge of the food, life, conditions and habits of British fishes. The work of the Association is controlled by a Council elected annually by its subscribing members.

Professor T. H. Huxley took the chair at the initial meeting held in the rooms of the Royal Society and was elected the first President. Among those present were Sir John Lubbock (afterwards Lord Avebury), Sir Joseph Hooker, Professor H. N. Moseley, Mr G. J. Romanes, and Sir E. Ray Lankester who, after Professor Huxley, was for many years president of the Association. It was decided that a laboratory should be established at Plymouth, where a rich and varied fauna is to be found.

The Plymouth Laboratory was opened in June 1888, and, since that date, a new library, and further laboratory accommodation have been added.

The Association is maintained by subscriptions and donations from private members, universities, scientific societies and other public bodies; a generous annual grant has been made by the Fishmongers' Company since the Association began. Practical investigations upon matters connected with sea-fishing are carried on under the direction of the Council, and from the beginning a Government Grant in aid of the maintenance of the laboratory has been made; in recent years this grant has been greatly increased in view of the assistance which the Association has been able to render in fishery problems and in fundamental work on the environment of marine organisms. Accounts of the laboratory and aquarium and the scope of the researches will be found in Vol. 27 (p. 761) and Vol. 39 (p. 391) of this *Journal*.

The laboratory is open throughout the year and its work is carried out by a fully qualified research staff under the supervision of the Director. The names of the members of the staff will be found at the beginning of this number. Accommodation is available for British and foreign scientific workers who wish to carry out independent research in marine biology, physiology and other branches of science. Arrangements are made for courses for advanced students to be held at Easter, and marine animals and plants are supplied to educational institutions.

Work at sea is undertaken by two research vessels and by a motor boat, and these also collect the specimens required in the laboratory.

## TERMS OF MEMBERSHIP

	<i>£</i>	<i>s. d.</i>
Annual Members . . . . . per annum	1	1 0
Life Members . . . . . Composition fee	15	15 0
Founders . . . . .	100	0 0
Governors . . . . .	500	0 0

Members of the Association have the following rights and privileges: they elect annually the Officers and Council; they receive the *Journal* of the Association free by post; they are admitted to view the laboratory at Plymouth, and may introduce friends with them; they have the first claim to rent a place in the laboratory for research, with use of tanks, boats, etc.; they have the privilege of occupying a table for one week in each year free of charge; and they have access to the books in the library at Plymouth.

The Commissioners of Inland Revenue have approved the Association for the purposes of Section 16, Finance Act, 1958, and that the whole of the annual subscription paid by a member who qualifies for relief under the section will be allowable as a deduction from his emoluments assessable to income tax under Schedule E.

All correspondence should be addressed to the Director, The Laboratory, Citadel Hill, Plymouth.

# CONTENTS

	PAGE
D. ATKINS and M. J. S. RUDWICK. The lophophore and ciliary feeding mechanisms of the brachiopod <i>Cramia anomala</i> (Müller) . . . . .	469
D. G. RAYNS. Alternation of generations in a coccolithophorid, <i>Cricosphaera carterae</i> (Braarud & Fagerl.) Braarud. . . . .	481
DOROTHY M. COLLYER. Method for determination of fat percentage in unicellular algae . . . . .	485
G. R. FORSTER. Observations on the ormer population of Guernsey . . . . .	493
J. W. MURRAY. A new bottom-water sampler for ecologists . . . . .	499
A. D. MCINTYRE. The class Kinorhyncha (Echinoderida) in British waters . . . . .	503
S. M. MARSHALL and A. P. ORR. Carbohydrate as a measure of phytoplankton . . . . .	511
ANNE C. COUPLAND. The taxonomy of monogenean gill parasites from <i>Scyliorhinus canicula</i> and <i>Raia clavata</i> at Plymouth . . . . .	521
M. B. V. ROBERTS. The rapid response of <i>Myxicola infundibulum</i> (Grübe) . . . . .	527
G. L. CLARKE, R. J. CONOVER, C. N. DAVID and J. A. C. NICOL. Comparative studies of luminescence in copepods and other pelagic marine animals . . . . .	541
IRENE MANTON and MARY PARKE. Preliminary observations on scales and their mode of origin in <i>Chrysochromulina polylepis</i> sp.nov. . . . .	565
A. D. BONEY and E. D. S. CORNER. On the effects of some carcinogenic hydrocarbons on the growth of sporelings of marine red algae . . . . .	579
J. LLEWELLYN. The life histories and population dynamics of monogenean gill parasites of <i>Trachurus trachurus</i> (L.) . . . . .	587
P. H. D. H. DE SILVA and E. W. KNIGHT-JONES. <i>Spirorbis corallinae</i> n.sp. and some other Spirorbinae (Serpulidae) common on British shores . . . . .	601
J. A. ALLEN. Preliminary experiments on the feeding and excretion of bivalves using <i>Phaeodactylum</i> labelled with <sup>32</sup> P . . . . .	609
ÅGOT BERNER. Feeding and respiration in the copepod <i>Temora longicornis</i> (Müller) . . . . .	625
J. M. GEE and E. W. KNIGHT-JONES. The morphology and larval behaviour of a new species of <i>Spirorbis</i> (Serpulidae) . . . . .	641
J. G. E. LEWIS. The ecology, distribution and taxonomy of the centipedes found on the shore in the Plymouth area . . . . .	655
WOLFGANG WIESER. Adaptions of two intertidal isopods. 1. Respiration and feeding in <i>Naesa bidentata</i> (Adams) (Sphaeromatidae) . . . . .	665
KOSARAJU REDDIAH. The sexuality and spawning of Manx pectinids . . . . .	683
ABSTRACTS OF MEMOIRS . . . . .	705
BOOK REVIEWS . . . . .	707
MARINE BIOLOGICAL ASSOCIATION OF THE UNITED KINGDOM. Report of the Council for 1961-62. Income and Expenditure Account . . . . .	709
LIST OF GOVERNORS, FOUNDERS, MEMBERS, HONORARY AND ASSOCIATE MEMBERS . . . . .	737

CAMBRIDGE UNIVERSITY PRESS

BENTLEY HOUSE, 200 EUSTON ROAD, LONDON, N.W. 1

AMERICAN BRANCH: 32 EAST 57TH STREET, NEW YORK 22, N.Y.

*Printed in Great Britain at the University Press, Cambridge*

*(Brooke Crutchley, University Printer)*