

THE ANNUAL
OF THE
BRITISH SCHOOL AT ATHENS

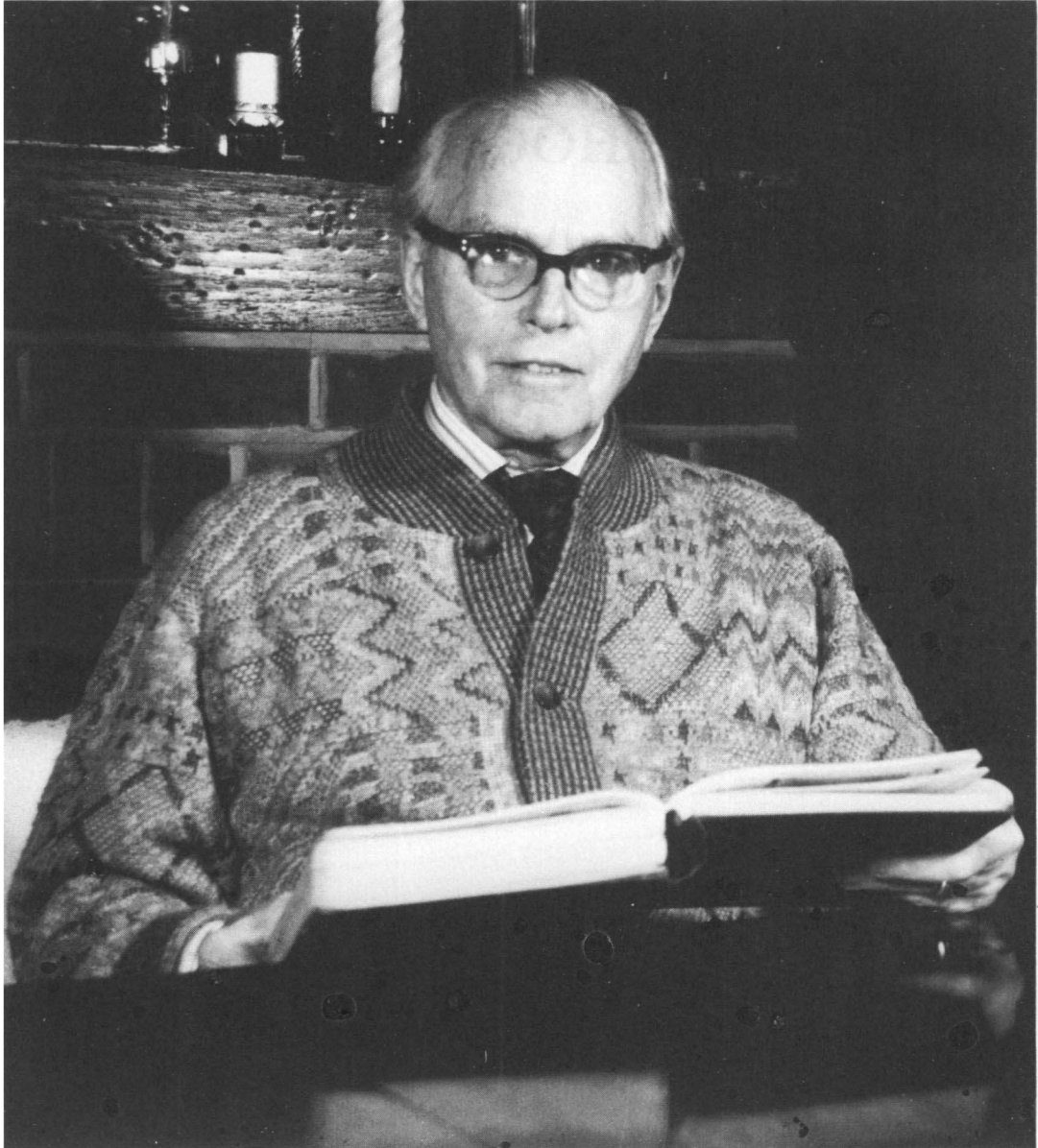
No. 83

1988

THE BRITISH SCHOOL AT ATHENS

31-34 GORDON SQUARE, LONDON WC1H 0PY

Published by the Managing Committee



To Dr. Marc Fitch, C.B.E., Hon. F.B.A., F.S.A.
Friend and Benefactor of the School
on his eightieth birthday

Τίμιος αἰὲν ἀνὴρ μάλα τ' ἔλβιος, ᾧ περ ἔδωκεν
Ζεὺς ἄφενος Ζένιος νοῦν τε κατ' ἐμπορίην.
Νηϊάδες δ' ἐνέπουσι ῥοαῖσι παρ' ἀλφεισιβοίαις
Ἰσμήνης συνετοῦ φωτὸς ἔτητυμῖην,
Κνώσιον δὲ Μουσεῖον ἀνέκτισε – χαῖρεν ὁ Μίνως
ὡς ἴδε δῆλα πίθων στρώματα καὶ πινάκων.
αὐτὰρ ἐν Ἀθίδι δεῖμα δόμον κλυτὸν· ἐνθάδ' Ἀθήνη
τοῖς ἐτάροις τέχνην καὶ μελέτην δέδασεν,
οἳ μάθον ὡς Κρήτηθεν ἐπήλυθον ἀμφιφορῆς
γραπτοὶ ἀν' αἰθαλόεν τῆς Σεμέλης ἄβατον.
οὐνόμαθ' εὔρε τάφους τε παλαιγενέων πολιάρχων,
τὴν προτέρων μνήμην πευθόμενος τοπικὴν.
αἰνέομέν ρα γέροντα σαόφρονα καὶ λυκάβαντος
ὀγδωκονταετοῦς ἡματι τερπόμεθα
γηθοσύνω· νῦν φῶμεν ὑπὲρ φίλου ἀνέρος ὦδε,
' Ἀργαυθωνεῖη μοῖρα μένοι βιότου'.

G.L.H.

© *The Managing Committee, British School of Archaeology at Athens 1988*

*Produced by Alan Sutton Publishing,
30 Brunswick Road, Gloucester
Printed in Great Britain
J. W. Arrowsmith Ltd, Bristol*

BRITISH SCHOOL AT ATHENS

31-34 GORDON SQUARE

LONDON, WC1H 0PY

ANNUAL OF THE BRITISH SCHOOL AT ATHENS: The following are in print, available from the above address (postage extra):-

Volume 53/54 (1958/9)	£15.00	Volume 73 (1978)	£20.00
Volume 60 (1965)	£15.00	Volume 74 (1979)	£30.00
Volume 61 (1966)	£15.00	Volume 75 (1980)	£30.00
Volume 61 (1966)	£15.00	Volume 75 (1980)	£30.00
Volume 62 (1967)	£15.00	Volume 76 (1981)	£30.00
Volume 63 (1968)	£15.00	Volume 77 (1982)	£40.00
Volume 64 (1969)	£15.00	Volume 78 (1983)	£40.00
Volume 65 (1970)	£15.00	Volume 79 (1984)	£40.00
Volume 66 (1971)	£15.00	Volume 80 (1985)	£45.00
Volume 67 (1972)	£15.00	Volume 81 (1986)	£45.00
Volume 68 (1973)	£15.00	Volume 82 (1987)	£45.00
Volume 69 (1974)	£16.00		
Volume 70 (1975)	£20.00	Index To Volumes 33-48	£1.50
Volume 71 (1976)	£20.00	Index To Volumes 49-68	£7.50
Volume 72 (1977)	£20.00		

Volumes 1-40 of the *ANNUAL* and *Index To Volumes* 1-32 have been reprinted, available from: Kraus Reprints, Millwood, New York 10546, USA.

SUPPLEMENTARY VOLUMES as follows available from Thames & Hudson Ltd., 44 Clockhouse Road, Farnborough, Hants GU14 7RA.

No. 3	The Technique of Greek Sculpture (Adam, 1966)	£20.00
No. 4	Tocra 1963-5: The Archaic Deposits I (Boardman and Hayes, 1966)	£25.00
No. 5	Saliagos: Neolithic Settlement (Evans and Renfrew, 1968)	£25.00
No. 6	Chios: Greek Emporio (Boardman, 1967)	£25.00
No. 7	Myrtos: Early Bronze Age Settlement (Warren, 1972)	£25.00
No. 8	Knossos: The Sanctuary of Demeter (Coldstream, 1973)	£16.00
No. 10	Tocra: The Archaic Deposits II, and Later Deposits (Boardman and Hayes, 1974)	£25.00
No. 11	Lefkandi I: The Iron Age (Popham, Sackett and Themelis) - Plates (1979)	£27.00
	Text (1980)	£46.00
No. 12	Excavations at Mycenae 1939-1955 (ed French, 1980)	£27.00
No. 13	The Bronze Age Palace at Knossos: Plan and Sections (Hodd and Taylor, 1981)	£14.00
No. 14	An Archaeological Survey of the Knossos Area (Hood and Smyth, 1981)	£19.00
No. 15	Prehistoric Emporio and Ayio Gala I (Hood, 1981)	£70.00
No. 16	Prehistoric Emporio and Ayio Gala II (Hood, 1982)	£62.50
No. 17	The Minoan Unexplored Mansion at Knossos (Popham) Plates (1984)	£45.00
	Text (1985)	£35.00
No. 18	The Archaeology of Cult: The Shrine at Phylakopi (Renfrew, 1985)	£35.00
No. 19	The British School at Athens: The First Hundred Years (Waterhouse, 1986)	£18.00

ARCHAEOLOGICAL REPORTS: Back issues for most years available from the British School at Athens, 31-34 Gordon Square, London WC1H 0PY, price £5.00 per copy, plus postage.

THE BRITISH SCHOOL AT ATHENS

PATRON: HRH THE PRINCE PHILIP, DUKE OF EDINBURGH, KG, KT, GBE

Director

Dr H. W. CATLING, OBE, MA, DPhil, FSA, Joint Editor of the *Annual*

Managing Committee 1987–88

Professor R. M. COOK, MA, FBA, *Chairman & Trustee*
Professor J. BOARDMAN, MA, FBA, FSA, *Trustee*
Professor J.N. COLDSTREAM, MA, FBA, FSA, *Trustee*
HBM AMBASSADOR at ATHENS, *Vice-President*
Sir CLIFFORD NORTON, KCMG, CVO, MA, *Vice-President*
Dr M. F. B. FITCH, CBE, MA, FSA, *Vice-President*
Sir PEREGRINE RHODES, KCMG, *Vice-President*
Dr J. J. COULTON, MA, PhD, Appointed by the University of Oxford
Dr J. F. CHERRY, MA, PhD, Appointed by the University of Cambridge
Dr A. W. JOHNSTON, MA, DPhil, Appointed by the University of London
Dr R. L. N. BARBER, MA, PhD, Appointed by the University of Edinburgh
Revd Professor W. MEANY, MA, PhD, DD, Appointed by the National University of Ireland
Professor F. G. B. MILLAR, MA, DPhil, FBA, Appointed by the British Academy
B. F. COOK, Esq., MA, FSA, Appointed by the British Museum
Professor R. A. TOMLINSON, MA, FSA, Joint Editor of the *Annual*
R. R. M. CLOGG, Esq., MA
Dr K. A. WARDLE, MA, PhD
Dr C. B. MEE, MA, PhD
Professor P. M. WARREN, MA, PhD, FSA
G. CADOGAN, Esq., MA, FSA
Dr A. J. N. W. PRAG, MA, PhD, FSA
Dr E. B. FRENCH, MA, PhD, FSA
M. S. F. HOOD, Esq., MA, FBA, FSA

Representatives of the Students

P. M. DAY, Esq., BA
Miss L. EDWARDES-EVANS, BA

Secretary: Mrs S. E. WAYWELL, BA, PhD, 31–34 Gordon Square, London WC1H 0PY
Treasurer: C. R. G. STEVENS., Woodgate, South Munsted Lane, Godalming, Surrey GU8 4AG

TABLE OF CONTENTS

1. ELINOR BEVAN. Ancient Deities and Tortoise-Representation in Sanctuaries .	1
2. J. M. COOK. Cities in and around the Troad (<i>Plate 1</i>)	7
3. WILLIAM D. E. COULSON. The Dark Age Pottery of Sparta, II: Vron dama (<i>Plate 2</i>)	21
4. J. CROUWEL. Mycenaean Pictorial Pottery from outside the Citadel at Mycenae (<i>Plates 3-4</i>)	25
5. CHARLES CROWTHER. A Note on Minoan Dikta	37
6. C. DAVARAS. A Minoan Beetle-rhyton from Prinias Siteias	45
7. Y. E. ERSOY. Finds from Menemen/Panaztepe in the Manisa Museum (<i>Plates</i> <i>5-10</i>)	55
8. D. EVELY. The Potters' Wheel in Minoan Crete (<i>Plates 11-20</i>)	83
9. D. EVELY. Unexplored Mansion. Knossos: Note 1 (<i>Plates 21-23</i>)	127
10. D. EVELY. Clay Tobacco Pipes from the University of Crete Medical Faculty .	135
11. E. D. FRANCIS and M. VICKERS. The Agora Revisited: Athenian Chronology <i>c</i> 500-450 B.C.	143
12. DAVID W. J. GILL. The Temple of Aphaia on Aegina: The Date of the Reconstruction	169
13. L. H. JEFFERY. The Development of Lakonian Lettering: A Reconsideration .	179
14. I. D. JENKINS and A. P. MIDDLETON. Paint on the Parthenon Sculptures .	183
15. O. H. KRZYSZKOWSKA. Ivory in the Aegean Bronze Age: Elephant Tusk or Hippopotamus Ivory? (<i>Plates 24-30</i>)	209
16. C. MACDONALD and J. DRIESSEN. The Drainage System of the Domestic Quarter in the Palace at Knossos (<i>Plates 31-40</i>)	235
17. J. A. MACGILLIVRAY, L. H. SACKETT, J. DRIESSEN, C. MACDONALD and D. SMYTH. Excavations at Palaikastro 1987 (<i>Plates 41-50</i>)	259
18. M. MELAS. Exploration in the Dodecanese: New Prehistoric and Mycenaean Finds (<i>Plates 51-54</i>)	283
19. C. A. MORGAN. Corinth, the Corinthian Gulf and Western Greece during the Eighth Century B.C.	313
20. ORA NEGBI. Levantine Elements in the Sacred Architecture of the Aegean .	339
21. I. PETROCHEILOS. An Unpublished Inscription from Kythera	359
22. K. A. SHEEDY. An Archaic Sphinx from Siphnos (<i>Plates 55-56</i>)	363
23. K. A. WARDLE. Excavations at Assiros Toumba 1987. A Preliminary Report (<i>Plates 57-60</i>)	375