

BJPsych

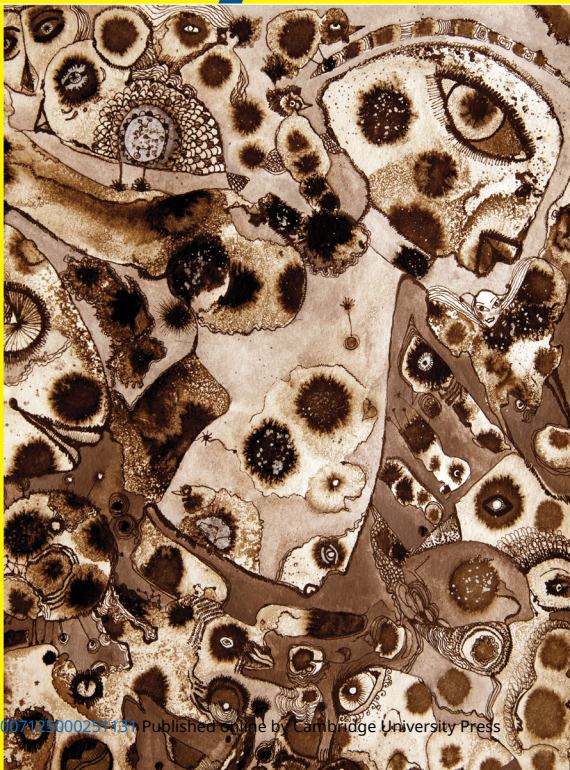
The British Journal of Psychiatry

**Towards ICD-11
and DSM-V**
Assen Jablensky

**Negative parental
discipline, conduct
problems and
callous-unemotional
traits**
Essi Viding *et al*

**Outcomes of people
with psychotic
disorders in a
community-based
rehabilitation
programme
in rural India**
Sudipto Chatterjee *et al*

**Effectiveness
and cost-
effectiveness
of a stepped care
intervention
for alcohol
use disorders
in primary care**
Colin Drummond *et al*



Contents

- A14 Editorial Board
A16 Highlights of this issue

Editorial

- 379 **Towards ICD-11 and DSM-V: issues beyond 'harmonisation'**
A. Jablensky

- 381 **Portrait of fellow patient – psychiatry in pictures**
Denis Reed

Special article

- 382 **Harmonisation of ICD-11 and DSM-V: opportunities and challenges**
M. B. First

- 390 **The electroshock riddle: effective but rejected – in 100 words**
Max Fink

Reappraisal

- 391 **Whither DSM-V?**
Allen Frances

Review article

- 393 **Voxel-wise meta-analysis of grey matter changes in obsessive-compulsive disorder**
J. Radua and D. Mataix-Cols

- 402 **Lady Audley's Secret (1862), Mary Elizabeth Braddon – psychiatrists in 19th-century fiction**
Fiona Subotsky

Papers

- 403 **Retrospective views of psychiatric in-patients regaining mental capacity**
G. S. Owen, A. S. David, P. Hayward, G. Richardson, G. Szmukler and M. Hotopf
- 408 **Dietary pattern and depressive symptoms in middle age**
T. N. Akbaraly, E. J. Brunner, J. E. Ferrie, M. G. Marmot, M. Kivimaki and A. Singh-Manoux
- 414 **Negative parental discipline, conduct problems and callous-unemotional traits: monozygotic twin differences study**
E. Viding, N. M. G. Fontaine, B. R. Oliver and R. Plomin
- 420 **Reactions to abortion and subsequent mental health**
D. M. Fergusson, L. J. Horwood and J. M. Boden
- 427 **Analysis of trauma exposure, symptomatology and functioning in Jewish Israeli and Palestinian adolescents**
A. Al-Krenawi, J. R. Graham and Y. Kanat-Maymon
- 433 **Outcomes of people with psychotic disorders in a community-based rehabilitation programme in rural India**
S. Chatterjee, A. Pillai, S. Jain, A. Cohen and V. Patel

- 440 **Guided and unguided self-help for social anxiety disorder: randomised controlled trial**

T. Furmark, P. Carlbring, E. Hedman, A. Sonnenstein, P. Clevberger, B. Bohman, A. Eriksson, A. Hällén, M. Frykman, A. Holmström, E. Sparthan, M. Tillfors, E. N. Ihrfelt, M. Spak, A. Eriksson, L. Ekselius and G. Andersson

- 448 **Effectiveness and cost-effectiveness of a stepped care intervention for alcohol use disorders in primary care: pilot study**

C. Drummond, S. Coulton, D. James, C. Godfrey, S. Parrott, J. Baxter, D. Ford, B. Lervy, S. Rollnick, I. Russell and T. Peters

- 456 **The original 'magic bullet' is 100 years old – extra**
Frank Heynick

Short reports

- 457 **Early course of bipolar disorder in high-risk offspring: prospective study**
A. Duffy, M. Alda, T. Hajek and P. Grof

- 459 **Gender differences in healthcare service utilisation 1 year before suicide: national record linkage study**
C.-M. Chang, S.-C. Liao, H.-C. Chiang, Y.-Y. Chen, K.-C. Tseng, Y.-L. Chau, H.-J. Chang, M.-B. Lee

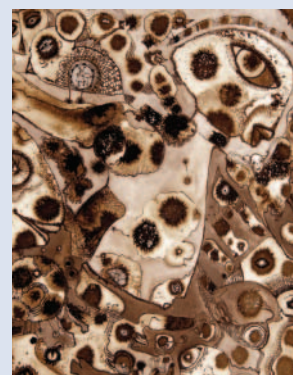
Columns

- 461 Correspondence
464 Book reviews
468 Contents of *Advances in Psychiatric Treatment*
469 Contents of the *American Journal of Psychiatry*
470 From the Editor's desk

Cover picture

The Nightwatch (2007).
Terence Wilde (b. 1963).

Terence Wilde has had two varying careers as an artist. First, in the fashion world where he used his textiles background as a freelance print designer, and currently within occupational therapy where he draws on his own mental health journey from the perspective of an adult survivor. Fashion dealt with surface values, decoration, distraction and concealment. Using creativity as a healing tool deals with what lies beneath the surface, real emotion, self-expression and the cathartic. *The Nightwatch* depicts a personal aspect of this underworld, using a combination of serendipity, where ink, salt and bleach are applied to paper and left to settle. Once dry, Terence uses fine penwork to give substance to shape and bring uniformity through detail. Fish- and birdlike hybrids dominate *The Nightwatch's* sepia tones – creatures of air and water, symbols of freedom. A further selection of Terence Wilde's images can be seen on www.terencewilde.me.uk.



We are always looking for interesting and visually appealing images for the cover of the *Journal* and would welcome suggestions or pictures, which should be sent to Dr Allan Beveridge, British Journal of Psychiatry, 17 Belgrave Square, London SW1X 8PG, UK or bjp@rcpsych.ac.uk