

Reading the Isotopic Clocks.

Your research in age determination and stable isotopes requires reliable data and custom service. Teledyne Isotopes has the expertise and experience to meet these requirements.

We have been pioneers in the industry since 1955 and are the only commercial laboratory that offers all major age determination techniques.

These include:

Radiocarbon

Stable isotopes: $^{13}\text{C}/^{12}\text{C}$ • $^{18}\text{O}/^{16}\text{O}$ • H/D
K/Ar • Rb/Sr • U/Pb • Pb/Pb

We can assure you of reliable data because of well-staffed and well-equipped labs, intercalibration with major universities and government facilities, and through use of N.B.S. and international standards.

For the most reliable reading of the isotopic clocks, come to the experts.

 **TELEDYNE ISOTOPES**

50 Van Buren Avenue
Westwood, NJ 07675
201/664-7070
Telex: 134474



EXCELLENT TITLES IN

ARCHAEOLOGY

The first major report on an important project...

QSAR ES-SEGHIR

An Archaeological View of Medieval Life

CHARLES L. REDMAN

This innovative work, combining anthropological and archaeological approaches with those of social history, provides new documentation of Medieval lifeways. The author also presents numerous original ideas on theories, methods, and techniques for research. He concludes with a comparison of Islamic and Portuguese cultures in the area and by outlining some efforts to improve general archaeological methodology.

In Paperback

1986, 259 pp.

\$24.95/ISBN: 0-12-584631-2

\$65.00/ISBN: 0-12-584630-4 — Casebound

ADVANCES IN ARCHAEOLOGICAL METHOD AND THEORY

Volume 9

Edited by **MICHAEL B. SCHIFFER**

CONTENTS: *N. Toth and K.D. Schick*, The First Million Years: The Archaeology of Protohuman Culture. *C. Chang and H.A. Koster*, Beyond Bones: Toward an Archaeology of Pastoralism. *R.C. Dunnell*, Methodological Issues in Americanist Artifact Classification. *G. Bronitsky*, The Use of Materials-Science Techniques in the Study of Pottery Construction and Use. *R.B. Lewis*, The Analysis of Contingency Tables in Archaeology. *J.W. Weymouth*, Geophysical Methods of Archaeological Site Surveying. *T.A. Kohler and S.C. Parker*, Predictive Models for Archaeological Resource Location. Each chapter includes references. Index.

In Paperback

February 1986, 480 pp.

\$34.95/ISBN: 0-12-000005-9

\$75.00/ISBN: 0-12-003109-4 — Casebound

Fulfills the need for a single, reliable source of information...

ADVANCES IN WORLD ARCHAEOLOGY

Volume 5

Edited by **FRED WENDORF and ANGELA E. CLOSE**

CONTENTS: *B.D. Smith*, The Archaeology of the Southeastern United States: From Dalton to de Soto, 10,500–500 B.P. *R.S. MacNeish*, The Preceramic of Middle America. *J.K. Kozlowski*, The Gravettian in Central and Eastern Europe. *K.W. Butzer*, Paleolithic Adaptations and Settlement in Cantabrian Spain. *J.D. Lewis-Williams and J.H.N. Loubser*, Deceptive Appearances: A Critique of Southern African Rock Art Studies. *T.N. Huffman*, Iron Age Settlement Patterns and the Origins of Class Distinction in Southern Africa. *T. Chung and G. Pei*, Upper Paleolithic Cultural Traditions in North China. Each chapter includes references. Index.

In Paperback

January 1986, 390 pp.

\$39.95/ISBN: 0-12-000009-1

\$80.00/ISBN: 0-12-268330-7 — Casebound

NUMERICAL METHODS IN QUATERNARY POLLEN ANALYSIS

H. J. B. BIRKS and A. D. GORDON

1985, 336 pp.
\$59.00/ISBN: 0-12-101250-6

SHAWNEE MINISINK

A Stratified Paleoindian – Archaic Site
in the Upper Delaware Valley of Pennsylvania

Edited by CHARLES W. McNETT, JR.

A Volume in the STUDIES IN ARCHAEOLOGY Series

In Paperback

1985, 352 pp.

\$34.95/ISBN: 0-12-485971-2

\$60.00/ISBN: 0-12-485970-4 — Casebound

DOMESTIC POTTERY OF THE NORTHEASTERN UNITED STATES, 1625–1850

Edited by SARAH PEABODY TURNBAUGH

A Volume in the STUDIES IN HISTORICAL ARCHAEOLOGY Series

In Paperback

1986, 336 pp.

\$34.95/ISBN: 0-12-703871-X

\$69.50/ISBN: 0-12-703870-1 — Casebound

Academic Press, Inc.
Harcourt Brace Jovanovich, Inc.
Orlando, Florida 32887, U.S.A.



Orlando San Diego New York Austin London Montreal Sydney Tokyo Toronto

For Fastest Service, CALL TOLL FREE 1-800-321-5068

To Place An Order From Florida, Hawaii, Or Alaska CALL 1-305-345-4100. Credit Card Orders Only. Send payment with order and save postage and handling. Prices are subject to change without notice.

Academic Press, Inc.
Harcourt Brace Jovanovich, Inc.
Attn: Marketing Dept., Orlando, FL 32887-0017, U.S.A.



Please enter the following order:

ISBN

AUTHOR/TITLE/VOLUME

_____	_____
_____	_____
_____	_____

Please check if you are an Academic Press or Grune & Stratton author.

U.S. Customers: Payment will be refunded of titles on which shipment is not possible within 120 days. Prices are in U.S. dollars and are subject to change without notice.

Name _____
(Please Print)

Address _____

City _____ State _____ Zip _____

Signature _____

VNK/IY — 07046

SAVE: Prepay or use your credit card and we pay postage and handling.

Please check one box:

Payment Enclosed
(add applicable sales tax)

American Express Diners Club

MasterCard Visa

Charge Card # _____

Expiration Date (mo/yr) _____

SMITHSONIAN INSTITUTION PRESS

American Archaeology Past and Future

A Celebration of the Society for
American Archaeology, 1935-1985

David J. Meltzer, Don D. Fowler,
and Jeremy A. Sabloff, editors

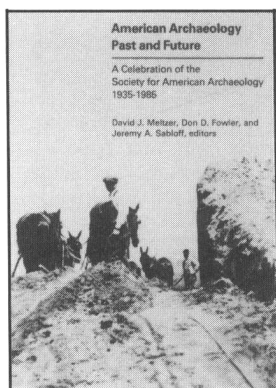
Commissioned especially for the fiftieth anniversary of the SAA, these essays by many of the leading figures in the field offer a comprehensive and critical overview of the state of American archaeology. Addressing issues in the history of the field and evaluating current trends in research and interpretation, the book testifies to the vigor and diversity of the discipline.

464 pp. LC 85-043244

Cloth: ISBN 692-2 \$35.00 MEAA

Paper: ISBN 693-0 \$19.95 MEAAP

May 1986



Cultures in Contact

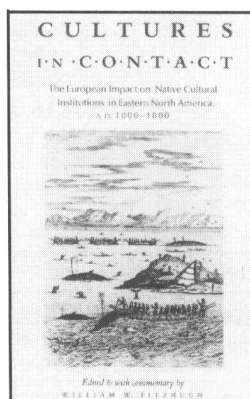
The European Impact on Native
Cultural Institutions in Eastern
North America, A.D. 1000-1800

William W. Fitzhugh, editor
First in the Anthropological Society
of Washington Series

This innovative collection exemplifies an interdisciplinary, synthetic approach to the early contact period, examining native settlement and subsistence patterns, economic structures, political organization, demography, and religious practices. Original case studies from Greenland to the Caribbean show the diversity of the European impact on indigenous cultures.

326 pp. LC 85-22173

Cloth: ISBN 438-5 \$29.95 FICC



Forthcoming titles in archaeology

The Archaeology of Western Iran

Frank Hole, editor

The first volume in the Smithsonian Series in Archaeological Inquiry, edited by Robert McC. Adams and Bruce D. Smith.

96 tables and line drawings 8 1/4 x 11

406 pp. Cloth

Fall 1986

The Artifacts of the Spanish Colonies

Kathleen Deagan

Fall 1987

Mississippian Emergence

The Evolution of Ranked Agricultural
Societies in Eastern North America

Bruce D. Smith, editor

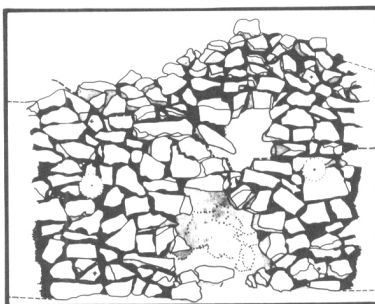
Fall 1987



Order by ALPHA code from SMITHSONIAN INSTITUTION PRESS

P.O. Box 4866, Hampden Station • Baltimore, MD 21211 • (301) 338-6963

CLOSE-RANGE TERRESTRIAL • AERIAL ANALYTICAL PHOTOGRAMMETRY for ARCHAEOLOGICAL APPLICATIONS



COMPLETE MEASUREMENT PROJECTS:

Consultation, planning & design • Control • Photography • Contour, planimetric, profile, x-section, area and volumetric data collection • Digital data • Maps & drawings • Training in imagery acquisition • PhD-level staff archaeologist

APPLICATIONS:

Site mapping • Profiles • Erosion, damage, vandalism & stability monitoring • Detailing site features & artifacts • Complete excavation recording • Measurement of fragile/oddly-shaped/ inaccessible features or artifacts • Microscopic artifact analysis • Complete HABS-HAER documentation • Spatial analysis • Predictive modeling • Database generation for statistical analysis

EQUIPMENT & SOFTWARE:

Kern DSR-II Analytical Stereocompiler with digital layering features • HP 24 x 36 drum plotter • Analytical aerotriangulation • Kogo • Close Range Image Set-up package for metric or non-metric imagery • MAPS 300 Interactive Graphics Package • DEC, IBM & HP formats • Disk, tape, modem, or hardcopy outputs.



Andrews Atherton, Inc.
6747 North Black Canyon
Phoenix, Arizona 85015-1029

**(602)
242-6229**

New from Cambridge

Symbols of Excellence

Precious Materials as Expressions of Status

Grahame Clark

Why do people value precious metals, gems, and a few organic materials like ivory and pearls so highly? Undoubtedly, through the ages prestige has been associated with the possession of precious materials. Today personal jewelry and insignia of rank are more common than ever, and Grahame Clark definitively explores the reasons why in this book.

c. 150 pp. 8 pp. color plates/36 plates/7 diagrams
30264-1 \$19.95

Prehistory in the Pacific Islands

A Study of Variation in Language, Customs and Human Biology

John E. Terrell

Professor John Terrell shows that the scholars' neat racial divisions simply do not fit the facts and do little to represent the diversity of peoples in the Pacific Islands. Using a wide range of data, he writes about prehistoric life in the Pacific and presents its great human diversity using both imagination and empirical methods of evaluation.

New Studies in Archaeology

c. 300 pp. 19 plates/77 diagrams
30604-3 About \$44.50

Island Societies

Archaeological Approaches to Evolution and Transformation

Editor: Patrick V. Kirch

Concentrating on the Pacific Islands, the contributors to this book show how the tightly focused social and economic systems of islands offer archaeologists a series of unique opportunities for tracking and explaining prehistoric change. The fascinating results of this work, centering on the evolution of complex Oceanic chiefdoms into something very much like classic "archaic states," are authoritatively surveyed here for the first time.

New Directions in Archaeology

c. 140 pp. 4 tables/33 diagrams and plates
30189-0 About \$29.95

Stone-Age Prehistory

Studies in Memory of Charles McBurney

Editors: G.N. Bailey, P. Callow

The studies in this wide ranging volume focus on the analysis of stone artifacts and industries and on the ways these can be used to throw light on human behavior from the earliest times. They have a broad chronological and geographical spread, from Europe and Africa to Australia and New Guinea.

c. 360 pp. 7 plates/numerous tables/64 diagrams
25773-5 About \$59.50

Teeth

Simon Hillson

Simon Hillson brings together a wealth of information on dental studies in archaeology and related disciplines and provides descriptions and specially designed line drawings to identify teeth from 150 genera. The detailed identification key, aging tables, information on laboratory techniques, and extensive bibliography form an integral part of the book.

Cambridge Manuals in Archaeology

15 plates/35 tables/107 diagrams
30405-9 About \$32.50

At bookstores or from

CAMBRIDGE UNIVERSITY PRESS

32 East 57th Street, New York, NY 10022

800-431-1580 (outside New York State and Canada)

MasterCard and Visa Accepted

Emil W. Haury's Prehistory of the American Southwest

J. Jefferson Reid & David E. Doyel, eds.

Emil Haury's contributions to Southwestern archaeology are reflected in a volume that features ten of his classic papers: *The Greater American Southwest* (1962); *HH-39: Recollections of a Dramatic Moment in Southwestern Archaeology* (1962); *Tree-Rings: The Archaeologist's Time-Piece* (1935); *Artifacts with Mammoth Remains, Naco, Arizona* (1953); *The Lehner Mammoth Site, Southeastern Arizona* (with Sayles & Wasley, 1959); *An Alluvial Site on the San Carlos Indian Reservation, Arizona* (1957); *Roosevelt 9:6: A Hohokam Site of the Colonial Period* (1932); *The Mogollon Culture of Southwestern New Mexico* (1936); *Evidence at Point of Pines for a Prehistoric Migration from Northern Arizona* (1958); and *Speculations on Prehistoric Settlement Patterns in the Southwest* (1956).

Introductory chapters by J. Jefferson Reid, Bryant Bannister & William J. Robinson, C. Vance Haynes, David E. Doyel, Steven A. LeBlanc, and Jeffery S. Dean place Haury's work in perspective, and a final chapter by Haury offers his "Thoughts After Sixty Years as a Southwestern Archaeologist."

528 pp., ill. \$45.00 cloth. April 1986.

Previously published—

Mogollon Culture in the Forestdale Valley

Emil W. Haury

Site reports on the Bluff and Bear ruins, plus the previously unpublished report on Tia Kii, establish the Mogollon on their own cultural track distinct from the Anasazi and also document the earliest known association of tree-ring dates with pottery in the Southwest. 454 pp., ill. \$27.50. 1985.

Also new—

The Geoarchaeology of Whitewater Draw, Arizona

Michael R. Waters

Anthropological Paper #45

Updates the research of Sayles and Antevs by documenting the geologic history of the region and critically evaluating the chronological placement of the Sulphur Spring phase of the Cochise culture. Also included is documentation of the oldest human remains from the Southwest. 81 pp. (8½ x 11), ill. \$14.95 paper. March 1986.

Archaeology in the City

A Hohokam Village in Phoenix, Arizona

Michael H. Bartlett, Thomas M. Kolas,

& David A. Gregory

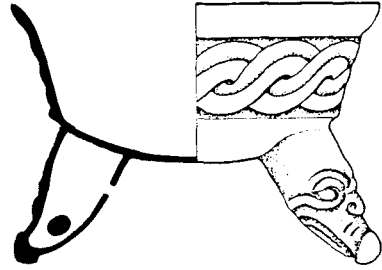
The excavation of the Las Colinas site in Phoenix successfully demonstrated to the public the benefits of salvage archaeology. This book, ideal for introductory courses, informs general readers about the nature of archaeological investigations and their importance to society. 80 pp., ill. \$6.95 paper. April 1986.

The University of Arizona Press

1615 E. Speedway, Tucson AZ 85719

NOW

18 titles available
in 2 series



Collection "Etudes Mesoaméricaines"

Serie I - Ten significant contributions about Mexico and Central America in the fields of Archaeology, Ethnology, Ethnohistory, Colonial History, Ecology.

Serie II - Eight paper-back publications: "another example of fine work by the French Centre for Mexican and Central American studies", writes F.W. Lange in his review of *Archéologie du sud de la péninsule d'Azuero, Panama* by A. Ichon in *American Antiquity* 47 (3).

Recently published

Serie I vol. 12 - *Les Chichimèques* by F. Rodriguez Loubet, 337 p., 7 maps, 133 ill., 10 pl., 43 annexes. Price US \$ 15.

Serie II vol. 8 - *Architecture and Archaeology*, methodological approaches in Yucatan chronology by G.F. Andrews and P. Gendrop ed., 88 p., 117 ill. Price US \$ 4.

In press

"Archéologie de l'habitat en Alta Verapaz, Guatemala"

by Marie Charlotte Arnauld.

"Paléopaysages et archéologie pré-urbaine du Bassin de Mexico"

by Christine Niederberger.

"Ethnoarchéologie de la maison Maya" by Marie-France Fauvet.

CEMCA

For orders or information please contact:

Centre d'Etudes Mexicaines et Centraméricaines
Sierra Leona 330 - 11000 México D.F.



CSU ARCHAEOLOGICAL LABORATORY

Department of Anthropology
Colorado State University
Fort Collins, Colorado 80523

Jeffrey L. Eighmy, Phd.
Laboratory Director
303-491-5784

J. Holly Hathaway, M.A.
Laboratory Associate
303-491-7408

ARCHAEOLOGICAL DATING

- On site sample collection
- Specialized equipment available
- Determination of current local magnetic declination
- Complete sample analysis - including demagnetization treatments
- Final reports: complete information report of all phases of treatment
- Visual plot of final sample VGP
- Statistical dating based on the most current regional curve

PROTON MAGNETOMETER SURVEYING

- Preliminary site examination to determine suitability for magnetic survey
- High resolution magnetometer surveying at 0.5 or 1.0 meter intervals
- Color-density contour maps with 50 possible color levels for fine resolution of magnetic intensity
- Computer image enhancement of data to reduce adverse effects from regional trends and local noise

Additional information, cost estimates and case histories available upon request.

**52nd ANNUAL MEETING
SOCIETY FOR AMERICAN ARCHAEOLOGY**

Royal York Hotel
Toronto, Ontario

Wednesday, May 6–Sunday, May 10, 1987

Annual Meeting Chair: Timothy Kaiser, Department of Anthropology,
University of Toronto, Toronto, Ontario, Canada M5S 1A1.

GUIDELINES FOR CONTRIBUTIONS

The Executive Committee has ruled that the privilege of presenting papers at the annual meeting of the Society will be restricted to paid-up members of the Society. The Committee further decided that a person may not deliver more than one paper although that person may, at the same meeting, chair a session or serve as junior co-author of a paper presented by someone else.

Completed symposia proposals, abstracts of symposium papers, abstracts of contributed papers, abstracts of research reports, and abstracts for poster sessions must reach the program chairperson no later than October 1, 1986. *All proposals and abstracts should be submitted on appropriate SAA forms.* These forms are mailed in March to all SAA members with the ballot. Additional forms may be obtained from the Society at the address below. Authors of papers and symposia organizers will be notified of the Program Committee's decision as soon as possible. Abstracts of all papers and research reports accepted for presentation will be published in the final program. Long abstracts are no longer required.

SYMPOSIA

A symposium consists of a group of papers on a common theme. The symposium topic and the individual papers within it will be reviewed. Changes, such as consolidation of two symposia or changes in the individual papers, may be recommended.

Symposia organizers should contact the Program Chair no later than September 1, 1986 in order that the *Guidelines for Symposium Organizers* and a special symposium form can be sent to them.

Complete symposia proposals must be submitted *as a package* by the symposium organizer(s) and must be received by October 1, 1986. The package must include for every paper presented in the symposium:

- 2 copies of the SAA Short Abstract Form and
- 1 copy of the SAA Contributor Index Form.

CONTRIBUTED PAPERS (20 minutes)

Contributed papers are to be distinguished from Research Reports in that they generalize, synthesize, or compare and are addressed to problems of theory, method, culture history, or culture process. Contributed papers must follow the same format as the symposia papers, and each proposed presentation must include:

- 2 copies of the SAA Short Abstract Form and
- 1 copy of the SAA Contributor Index Form.

RESEARCH REPORTS (10 minutes) AND POSTER SESSIONS

A research report is a description of the results of a recent field or laboratory research project. This year the research report section will be divided into oral presentation and poster sessions: the author may choose which form to use. The poster session is especially appropriate for research results that can be described better graphically than verbally. Research reports will be reviewed. If the number submitted exceeds the space and time available, they will be accepted *in the order of submission*. Each proposed presentation must include:

- 2 copies of the SAA Short Abstract Form and
- 1 copy of the SAA Contributor Index Form.

Please follow these instructions carefully. Incorrect or late submissions can be considered only if space and time allow.

All other requests for scheduling and rooms or committee meetings, promotional booths, etc. should be directed to Jerome A. Miller, 1511 K Street, N.W., Suite 716, Washington, D.C. 20005.

CONTENTS

Mississippian Period Population Density in a Segment of the Central Mississippi River Valley	<i>George R. Milner</i>	227
An Analysis of the Symbolism Expressed by the Birger Figurine	<i>Guy Prentice</i>	239
The Identification of Vessel Function: A Case Study from Northwest Georgia	<i>David J. Hally</i>	267
Site Surface Characteristics and Functional Inferences	<i>Sarah H. Schlanger and Janet D. Orcutt</i>	296
Terminal Classic Interaction on the Southeastern Maya Periphery	<i>Rosemary A. Joyce</i>	313
REPORTS		
Toward Peopling the New World: A Possible Early Palaeolithic in Tohoku District, Japan	<i>T. E. G. Reynolds</i>	330
Re-evaluation of the First Radiocarbon Age for the Folsom Culture	<i>Vance T. Holliday and Eileen Johnson</i>	332
Spurred End Scrapers as Diagnostic Paleoindian Artifacts: A Distributional Analysis on Stream Terraces	<i>Richard A. Rogers</i>	338
Broken Canines from Alaskan Cave Deposits: Re-evaluating Evidence for Domesticated Dog and Early Humans in Alaska	<i>E. James Dixon and George S. Smith</i>	341
A Late Paleoindian Animal Trapping Net from Northern Wyoming	<i>George C. Frison, R. L. Andrews, J. M. Adovasio, R. C. Carlisle, and Robert Edgar</i>	352
Sulphur Springs Woman: An Early Human Skeleton from Southeastern Arizona	<i>Michael R. Waters</i>	361
Historical Aspects of the Calaveras Skull Controversy	<i>Ralph W. Dexter</i>	365
Prehistoric Long-Distance Transport of Construction Beams, Chaco Canyon, New Mexico	<i>Julio L. Betancourt, Jeffrey S. Dean, and Herbert M. Hull</i>	370
Dental Evidence for Prehistoric Dietary Change on the Northern Channel Islands, California	<i>Phillip L. Walker and Jon M. Erlandson</i>	375
Unproductive Lithic Resources at Lake Mead	<i>Kathryn A. Kamp and John C. Whittaker</i>	383
New Evidence for Early Woodland Seasonal Adaptation from Southern Ontario, Canada	<i>L. J. Jackson</i>	389
COMMENTS		
Licks, Pans, and Chiefs: A Comment on "Mississippian Specialization and Salt"	<i>Richard W. Yerkes</i>	402
Pans and a Grain of Salt: Mississippian Specialization Revisited	<i>Jon Muller</i>	405
A Note on Frequencies, Proportions, and Diversity: A Response to Cannon	<i>Steven A. Rosen</i>	409
On the Misuse of Projectile Point Typology in Mesoamerica	<i>Thomas R. Hester</i>	412
Linguistic Adaptation and the Great Basin	<i>David Leedom Shaul</i>	415
CURRENT RESEARCH, edited by Lynne Goldstein		
Far North, Pacific Northwest, Great Basin and California		417
REVIEWS AND BOOK NOTES, edited by Jerald T. Milanich		
		428