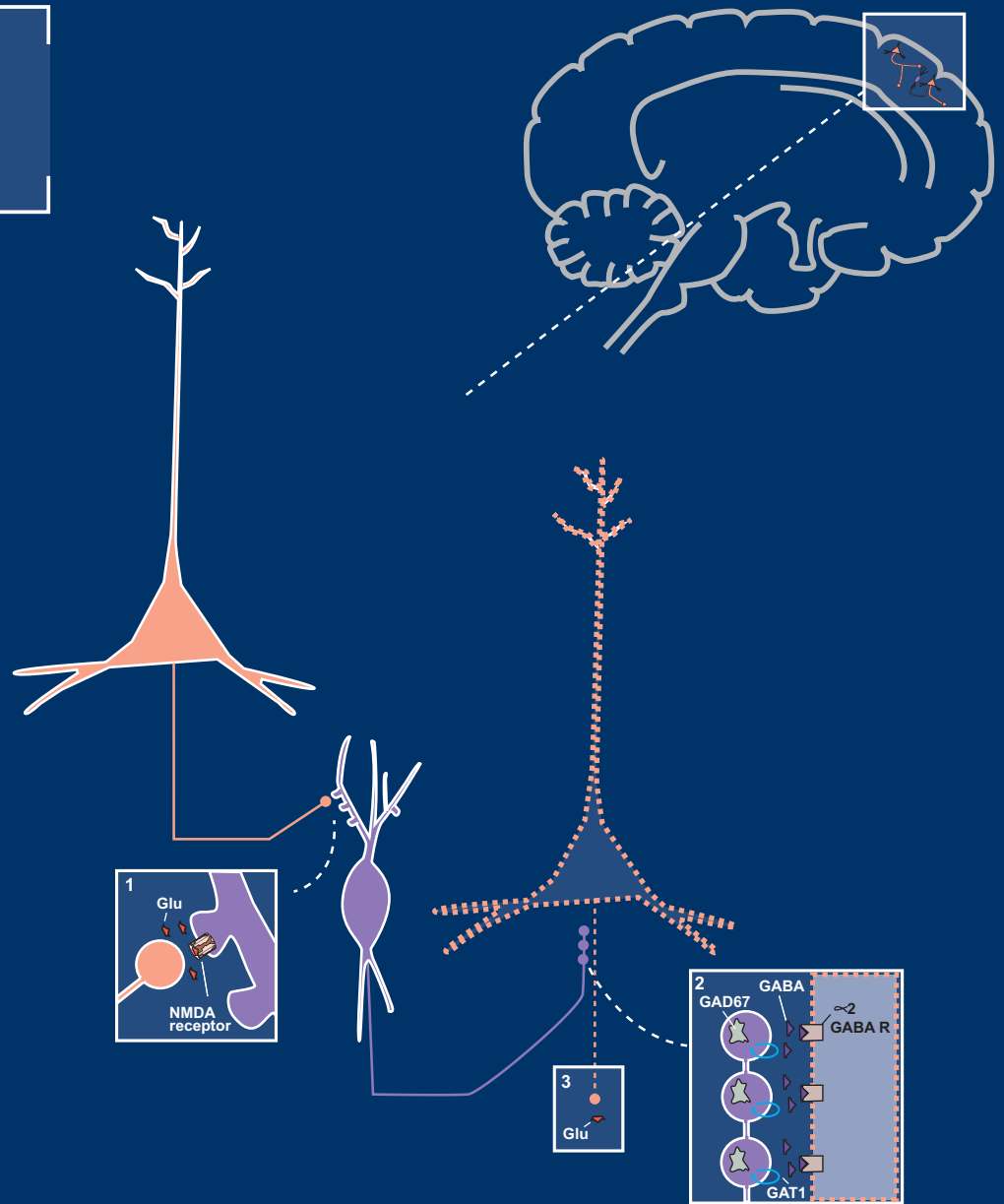


VOLUME 21 | ISSUE 4

August 2016

ISSN: 1092-8529



journals.cambridge.org/cns

CNS SPECTRUMS

EDITOR-IN-CHIEF: **STEPHEN M. STAHL**



The journal of the
**Neuroscience
Education Institute**

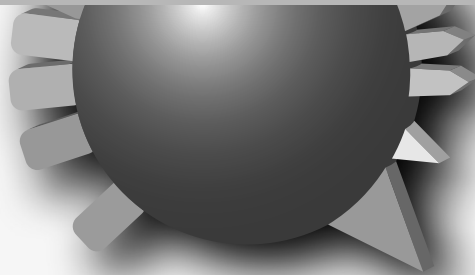


**CAMBRIDGE
UNIVERSITY PRESS**

Want some CME with that?

STAHL

MASTERCLASS



- An online educational program in core areas of psychiatry with interactive readings, short lectures, animations and case studies

- Self-testing and opportunities to claim formal CME credits, all taken at a self-directed speed

- Written and moderated by experts in the field from the Dr. Stahl's Neuroscience Education Institute and the University of Cambridge

For more information, please go to
www.stahlmasterclass.com



CAMBRIDGE
UNIVERSITY PRESS

CNS SPECTRUMS

CONTENTS

BRAINSTORMS

Mechanism of action of pimavanserin in Parkinson's disease psychosis: targeting serotonin 5HT_{2A} and 5HT_{2C} receptors

Stephen M. Stahl 271

GUEST EDITORIAL

ICD and DSM: neuroplasticity and staging are still missing

Stefano Pallanti 276

OPINIONS

PTSD treatment in light of DSM-5 and the "golden hours" concept

Lior Carmi, Leah Fostick, Shimon Burshtein, Shlomit Cwikel-Hamzany and Joseph Zohar 279

Are the ICD-10 or DSM-5 diagnostic systems able to define those who will benefit from treatment for depression?

Stuart Montgomery 283

REVIEW ARTICLES

The separation of adult separation anxiety disorder

David S. Baldwin, Robert Gordon, Marianna Abelli and Stefano Pini 289

Neurodevelopmental Disorders (ASD and ADHD): DSM-5, ICD-10, and ICD-11

Ellen Doernberg and Eric Hollander 295

Expanding the definition of addiction: DSM-5 vs. ICD-11

Jon E. Grant and Samuel R. Chamberlain 300

Eating disorders

Stefano Erzegovesi and Laura Bellodi 304

The clinical inadequacy of the DSM-5 classification of somatic symptom and related disorders: an alternative trans-diagnostic model

Fiammetta Cosci and Giovanni A. Fava 310

Bipolar and related disorders in DSM-5 and ICD-10

Alexander Kaltenboeck, Dietmar Winkler and Siegfried Kasper 318

Obsessive compulsive and related disorders: comparing DSM-5 and ICD-11

Anna Marras, Naomi Fineberg and Stefano Pallanti 324

Gender and cultural issues in psychiatric nosological classification systems

Tanya van de Water, Sharain Suliman and Soraya Seedat 334

Catatonia

Sebastian Walther and Werner Strik 341

Psychotic disorders in DSM-5 and ICD-11

Falko Biedermann and W. Wolfgang Fleischhacker 349

Editor-in-Chief

Stephen M. Stahl, Adjunct Professor of Psychiatry at the University of California San Diego, USA;
Honorary Visiting Senior Fellow at the University of Cambridge, UK.

Field Editors

Joseph F. Goldberg, Icahn School of Medicine at Mount Sinai, USA
Thomas E. Schlaepfer, University Hospital Bonn, Germany
Frank I. Tarazi, Harvard Medical School, USA
Carlos A. Zarate, National Institute of Mental Health, USA

Deputy Editor

Thomas L. Schwartz, SUNY Upstate Medical University at Syracuse, USA

Editorial Board

Dennis S. Charney, Mount Sinai School of Medicine, USA
Maria Conceição do Rosario, University of São Paulo Medical School, Brazil
Jeffrey L. Cummings, Cleveland Clinic, USA
Thilo Deckersbach, Harvard Medical School, USA
Koen Demyttenaere, University Psychiatric Center KuLeuven, Belgium
Karen D. Ersche, University of Cambridge, UK
Robert L. Findling, The Johns Hopkins Hospital, USA
Patrick R. Finley, University of California, San Francisco, USA
Mark S. George, Medical University of South Carolina, USA
Ira D. Glick, Stanford University, USA
Joseph F. Goldberg, Icahn School of Medicine at Mount Sinai, USA
Eric Hollander, Albert Einstein College of Medicine and Montefiore Medical Center, USA
Daphne Holt, Harvard Medical School, USA
Peter B. Jones, University of Cambridge, UK
Andres M. Kanner, University of Miami, USA
Antony D. Loebel, New York University School of Medicine, USA
Donatella Marazziti, University of Pisa, Italy
Herbert Y. Meltzer, Northwestern University, USA
Philip Mitchell, University of New South Wales, Australia
Jun Nakamura, University of Occupational and Environmental Health, Japan
Humberto Nicolini, National Institutes of Health, Minister of Health, México
Andrew A. Nierenberg, Harvard Medical School, USA
Stefano Pallanti, University of Florence, Italy
Katharine A. Phillips, Brown University, USA
Diego A. Pizzagalli, Harvard Medical School, USA
Mark H. Pollack, Rush University Medical Center, USA
Mark H. Rapaport, Emory University, USA
Irismar Reis de Oliveira, Universidade Federal da Bahia, Brazil
Trevor W. Robbins, University of Cambridge, UK
Peter P. Roy-Byrne, University of Washington School of Medicine, USA
Barbara J. Sahakian, University of Cambridge, UK
Gerard Sanacora, Yale University School of Medicine, USA
Alan F. Schatzberg, Stanford University School of Medicine, USA
Thomas E. Schlaepfer, University of Bonn, Germany
Thomas L. Schwartz, SUNY Upstate Medical University in Syracuse, USA
Jordan W. Smoller, Harvard Medical School, USA
Dan J. Stein, University of Cape Town (UCT), South Africa
Stephen Strakowski, University of Cincinnati, USA
T. Scott Stroup, Columbia University, USA
Frank I. Tarazi, Harvard Medical School, USA
Michael E. Thase, University of Pennsylvania, USA
Michael Trimble, National Hospital for Neurology, Queen Square, London
Madhukar H. Trivedi, University of Texas Southwestern Medical Center, USA
Karen Dineen Wagner, The University of Texas Medical Branch, USA
Katherine D. Warburton, California Department of State Hospitals, USA
Stephen R. Wisniewski, University of Pittsburgh, USA
Shigeto Yamawaki, Hiroshima University, Japan
Carlos A. Zarate, Jr., National Institute of Mental Health, USA
Joseph Zohar, Tel Aviv University, Israel

Managing Editor

Lisa Arrington, Cambridge University Press (larrington@cambridge.org)

Cover Image: The image on the cover shows a hypothetical model whereby glutamate is released from an intracortical pyramidal neuron and binds to an NMDA receptor on a GABA-ergic interneuron. GABA is then released and binds to receptors on the axon of another glutamate pyramidal neuron. This inhibits the neuron, thus reducing the release of cortical glutamate. The GABA interneuron and its NMDA synapse from the first neuron to the second is the hypothetical site of glutamate dysfunction in schizophrenia.

Stahl's Essential Psychopharmacology, 4th edition, by Stephen M. Stahl

Copyright © 2016 Stephen M. Stahl. Reproduced with permission.

Aims and Scope

CNS Spectrums covers all aspects of the clinical neurosciences, neurotherapeutics and neuropsychopharmacology, particularly those pertinent to the clinician and clinician investigator. The journal features focused, in-depth reviews, perspectives and original research articles. New therapeutics of all types in psychiatry, mental health, and neurology are emphasized, especially first in man studies, proof of concept studies and translational basic neuroscience studies. Subject coverage spans the full spectrum of neuropsychiatry, focusing on those crossing traditional boundaries between neurology and psychiatry.

Submitting Manuscripts to *CNS Spectrums*

All submissions to *CNS Spectrums* should be prepared in accordance with the instructions for authors and in the style of the Journal. Manuscripts should be submitted through the dedicated *CNS Spectrums* ScholarOne Manuscripts website: <http://mc.manuscriptcentral.com/cnsspectr>

CNS Spectrums will consider and encourage the following types of articles for publication: **Reviews**—The review article is a comprehensive article summarizing and synthesizing the literature on various topics presented in a scholarly and clinically relevant fashion; **Perspectives**—The perspective article is a type of review that is a short, focused summary of a single recent advance, a sort of spotlight on the topic, which could be for example, a single point hypothesis or a novel model. It can stimulate debate and new research. **Meta Guidelines**—A meta-guideline is a “guideline of guidelines” put together by several leading figures in a field in which there are multiple competing guidelines that require synthesis and updating; **Original Research**—Reports the results of a clinical study and contains original research; the journal will also include **Brainstorms** and **Editorials** that shall be commissioned or written by the Editor-in-Chief.

Instructions for Contributors

The Instructions for Contributors are available on the Cambridge Journals Online web site at: <http://journals.cambridge.org/CNSifc>

Indexing

CNS Spectrums is indexed by *Index Medicus*/MEDLINE and Web of Science (Thomson Reuters) as well as appearing in the annual Journal Citation Report. Introduced in 1996, the journal was acquired in whole by Cambridge University Press in November of 2011.

Subscriptions

Institutional print and electronic: £544/\$862; Institutional electronic only: £413/\$660.

© Cambridge University Press 2016. All rights reserved.

No part of this publication may be reproduced, in any form or by any means, electronic, photocopying, or otherwise, without permission in writing from Cambridge University Press. Policies, request forms, and contacts are available at: <http://www.cambridge.org/rights/permissions/permission.htm>. Permission to copy (for users in the U.S.A.) is available from Copyright Clearance Center <http://www.copyright.com>, email: info@copyright.com.

Rights & permissions requests can be applied for online within each article by clicking “Request Permissions” within the table of contents or in the fulltext version of a specific article. Requests will be processed via the CCC Rightslink system and processed immediately.

CNS Spectrums (ISSN: Print 1092-8529; eISSN: 2165-6509) is published bimonthly by Cambridge University Press.

Postmaster

Send address changes in the U.S.A., Canada, and Mexico to *CNS Spectrums*, Cambridge University Press, Journals Dept., One Liberty Plaza, 20th Floor, New York, NY 10006, U.S.A. Send address changes elsewhere to *CNS Spectrums*, Cambridge University Press, The Edinburgh Building, Shaftesbury Road, Cambridge CB2 8RU, England.

Online availability

CNS Spectrums is hosted on the Cambridge Journals Online (CJO) service at <http://journals.cambridge.org/cns>

Institutional subscribers: Access to full-text articles online is only granted to subscription options offering an online component. Subscriptions must be activated by the purchasing institution using the instructions provided at the time of purchase; see information for subscribers at: <http://journals.cambridge.org/>

Reprint and Advertising Sales

Inquiries for bulk reprint sales should be sent to USReprints@cambridge.org. Advertising inquiries should be sent to M. J. Mrvica Associates, Inc., 2 West Taunton Avenue, Berlin, NJ 08009; Phone: 856-768-9360; Fax: 856-753-0064; Email: mjmrvica@mrvica.com.