

RESEARCH ARTICLE

Do counts of radiocarbon-dated archaeological sites reflect human population density? A preliminary empirical validation examining spatial variation across late Holocene California

Brian F Codding^{1,2} , Jack Meyer³, Simon C Brewer⁴, Robert L Kelly⁵ and Terry L Jones⁶

¹Department of Anthropology, University of Utah, 260 Central Campus Drive, Salt Lake City, UT 84112, USA, ²Archaeological Center, University of Utah, 260 Central Campus Drive, Salt Lake City, UT 84112, USA, ³SWCA Environmental Consultants, 100 Howe Ave, Suite 230N, Sacramento, CA 95825, USA, ⁴School of Environment, Society, and Sustainability, University of Utah, 260 Central Campus Drive, Salt Lake City, UT 84112, USA, ⁵Department of Anthropology, University of Wyoming, 1000 E. University Ave., Laramie, WY 82071, USA and ⁶Department of Anthropology, California Polytechnic State University, 1 Grand Ave, San Luis Obispo, CA 93410, USA

Corresponding author: Brian F Codding; Email: brian.codding@anthro.utah.edu

Received: 31 May 2023; **Revised:** 11 April 2024; **Accepted:** 18 April 2024

Keywords: archaeological demography; dates-as-data; hunter-gatherers; Indigenous North America

Abstract

Researchers increasingly rely on aggregations of radiocarbon dates from archaeological sites as proxies for past human populations. This approach has been critiqued on several grounds, including the assumptions that material is deposited, preserved, and sampled in proportion to past population size. However, various attempts to quantitatively assess the approach suggest there may be some validity in assuming date counts reflect relative population size. To add to this conversation, here we conduct a preliminary analysis coupling estimates of ethnographic population density with late Holocene radiocarbon dates across all counties in California. Results show that counts of late Holocene radiocarbon-dated archaeological sites increase significantly as a function of ethnographic population density. This trend is robust across varying sampling windows over the last 5000 BP. Though the majority of variation in dated-site counts remains unexplained by population density. Outliers reveal how departures from the central trend may be influenced by regional differences in research traditions, development-driven contract work, organic preservation, and landscape taphonomy. Overall, this exercise provides some support for the “dates-as-data” approach and offers insights into the conditions where the underlying assumptions may or may not hold.

Introduction

Researchers increasingly rely on aggregated radiocarbon dates from archaeological contexts to represent relative human population size or settlement density across time and space (e.g., Chaput et al. 2015; Chaput and Gajewski 2016; Codding et al. 2023, 2022; Crema and Shoda 2021; DiNapoli et al. 2021; Glassow 1999; Kelly et al. 2013; McCool et al. 2022; Peros et al. 2010; Riris 2018; Robinson et al. 2019; Shennan et al. 2013; Steele 2010; Timpson et al. 2014; Williams 2012; Wilson et al. 2022; Zahid et al. 2016). This “dates-as-data” approach (Rick 1987) rests on several assumptions, including that datable material is deposited by past people, preserved through time, and sampled by archaeologists all in proportion to the relative number of people living at any one point in time (Contreras and Meadows 2014; Crema 2021; Williams 2012).

Critiques of the approach highlight that non-random patterning in the cultural deposition (Freeman et al. 2018), preservation (Contreras and Codding 2023; Surovell et al. 2009), and sampling (Contreras



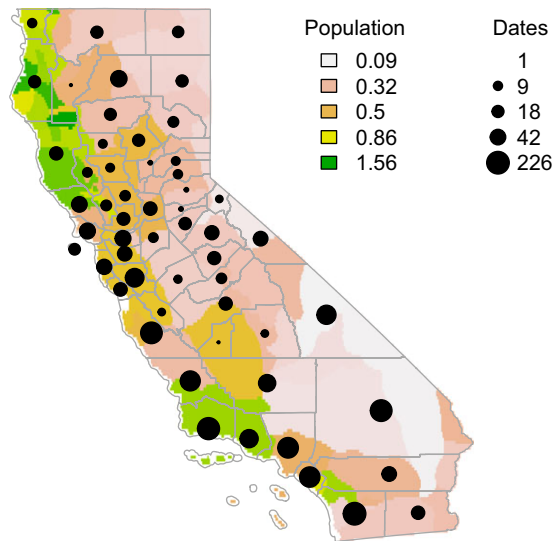


Figure 1. Map of California showing pre-contact period population estimates (persons per square kilometer) for each ethnolinguistic group (after Codding and Jones 2013) and the number of unique archaeological sites dated within the last 4000 BP for each county (after Kelly et al 2022); updated by Meyer.

and Meadows 2014) of datable material, as well as structure in the calibration curve (Brown 2015), may systematically bias aggregated radiocarbon dates in ways that do not reflect past population size. Despite these limitations, several studies validate some aspects of the approach using simulation (Brown 2015; Carleton 2021; Carleton and Groucutt 2021; Contreras and Codding 2023; Contreras and Meadows 2014) and multi-proxy archaeological evidence (e.g., Robinson et al. 2021) to highlight the specific conditions under which aggregated dates might reflect patterning in past population size.

Here we add to this conversation by coupling ethnographic population density estimates summarized by Codding and Jones (2013) with a systematic record of radiocarbon dates from archaeological contexts compiled by Kelly et al. (2022) and updated by Meyer for the modern state of California to see if counts of radiocarbon-dated sites vary as a function of estimated ethnolinguistic population density.

Methods

To help evaluate whether counts of radiocarbon-dated archaeological sites reflect past population size, here we undertake a preliminary empirical validation study in California (see Figure 1). California provides a useful test case given the history of ethnohistoric research examining Indigenous population density (Baumhoff 1963; Cook 1976, 1956, 1955; Heizer 1978; Kroeber 1925), and the state's robust legal protections for historic resources on state and private lands under the California Environmental Quality Act (CEQA) in addition to work on federal land under the National Historic Preservation Act. Researchers in the region also have a history of systematically compiling radiocarbon dates from archaeological sites (e.g., Breschini et al. 2004, 1996; Glassow 1999), which contributed to the recent national synthesis led by Robert Kelly and colleagues (2022), since updated by co-author Jack Meyer. The Meyer database includes 12,381 dates from archaeological contexts at sites in California, which has 1,549 additional dates not included in Kelly et al. (2022). While we do not expect ethnographic population density to reflect the actual density of past populations, as these fluctuated over time, we do expect there to be consistency in their relative variation across space. For example, counties with high ethnographic population density likely had high past population density relative to counties with low ethnographic populations. This assumption is supported by the well-documented influence of

environmental parameters on hunter-gatherer population size (Baumhoff 1963; Codding and Jones 2013; Tallavaara et al. 2018; Zhu et al. 2021). This is addressed more in the discussion.

Here we explore spatial variation in dated site counts, and how it is predicted by spatial variation in the ethnographic population estimates. Applying these findings to understand changes in dated site counts over time relies on making a “space-for-time” substitution, or assuming that the processes that underly spatial relationships also structure relationships over time. Such an assumption is often made when studying ecological processes (Blois et al. 2013), though it is not always clear if spatial and temporal processes are equivalent (Lovell et al. 2023). The approach is also implicit in many archaeological studies that leverage spatial variation in cross-cultural patterns to make analogies about change over time in the archaeological record. Here we suggest this may hold given that environmental factors likely influence population dynamics over time (Bevan et al. 2017; DiNapoli et al. 2021; Kelly et al. 2013) and space (e.g., Codding and Jones 2013; Tallavaara et al. 2018; Zhu et al. 2021). The analysis of spatial variation in radiocarbon dates from archaeological contexts have well-developed approaches for mitigating the effect of uneven sampling across space (Bevan et al. 2017; Chaput et al. 2015; Crema et al. 2017; Crema et al. 2016) that can further facilitate making inferences through time and space.

Our unit of analysis is the county. While an arbitrary modern administrative boundary subject to the modifiable areal unit problem (Openshaw 1983), it does have several benefits, including that aggregate information on archaeological sites are easily compiled at the county level given the use of Smithsonian trinomials (site-county-number) as site identifiers, which also allows these data to be openly shared without violating federal law restricting the dissemination of site locations (section 470hh of the Archaeological Resources Protection Act). One additional benefit of retaining analysis at the county level is that it aids in the interpretation of potential factors biasing the record, including the history of research, development-driven investigations, and broad environmental patterns.

All analyses are run in the R Environment for Statistical Computing (R Core Team 2022). We align the two datasets using the county polygons from the state TIGER/Line Shapefiles (California Department of Technology 2016). To calculate average population density per county, we convert estimates for each Indigenous ethnolinguistic group synthesized by Codding and Jones (2013) to a raster, and then extract the mean population density for each county shapefile using the raster package (Hijmans 2018). To calculate dated site counts, we then sum the total number of unique radiocarbon-dated archaeological sites by each county name for each time interval of interest. We limit our sample to unique radiocarbon dated sites to avoid double-counting sites with multiple dates. This is a cautious approach that comes at the cost of potentially underrepresenting multi-component late Holocene sites. This is sometimes referred to as ‘thinning’ the sample (Crema and Bevan 2021). Dated sites on the California Channel Islands are summed by their administering county (i.e., San Miguel, Santa Cruz, Santa Rosa, and Santa Barbara Islands are all assigned to Santa Barbara County; Anacapa and San Nicolas to Ventura County; and San Clemente and Santa Catalina to Los Angeles County). Ethnographic population estimates for these islands are also averaged into the county estimate.

Because this analysis focuses on the relative differences in dated site counts across space, we are not concerned about the specific calendar ages or the influence of the calibration curve on aggregations. As such, we use radiocarbon ages to aggregate dates in radiocarbon years before present (BP). While calibrating each date before aggregation may shift the total number of dates included in each time interval, it would not systematically vary the relative counts of dates across space (i.e., per county). First, we evaluate the relationship with all late Holocene dates (operationally defined as 0–4000 BP). To assess the resilience of this relationship, we then iterate the model fit with increasing 500-year windows of time starting at 0–500 BP up to 0–5000 BP. As noted above, we select only one date per site for each time interval, so as to not bias the number of dates based on overly sampled sites. These data are available in the Supplementary Material.

We describe the relationship between dated site counts and population density using count regression implemented with a generalized linear model (GLM) that specifies a distribution and link appropriate to count data (see below), which have been shown to perform better than log-transformed count data with parametric models (O’Hara and Kotze 2010). We include county area as a log-offset to account for

differences in counts caused by variation in sampling area (Bolker 2015; Bolker et al. 2009). This approach to modeling count data is standard in ecology (e.g., Bolker et al. 2009; Zuur et al. 2009) and is preferable to modeling the density (rate) directly. For a graphical example of why this approach is taken, see the panel sequence in Figure 2 (see also Codding and Brewer 2024).

As the response variable is a count of radiocarbon-dated sites per county, we first fit the model with a Poisson distribution which is standard for count regression (Codding and Brewer 2024; Zuur et al. 2009). However, as Poisson models assume that the variance is roughly equal to the mean, we check the fit for overdispersion by dividing the sum of squared Pearson's residuals by the residual degrees of freedom to assess if the mean and variance are of a similar order of magnitude. As diagnostics reveal significant overdispersion (see Supplementary Material), we re-run the model using a negative binomial family from the MASS library (Venables and Ripley 2002) which can account for overdispersion (variance greater than the mean). We then check for spatial autocorrelation in the model residuals using a global Moran's I index. Spatial autocorrelation is when neighboring observations are more (or less) like one another than is expected by chance, which can bias model results. As this reveals significant ($p < 0.05$) autocorrelation, we then estimate the spatial component of the trend from a binary neighbor matrix using a Moran eigenvector filtering function (Bivand et al. 2013; Dray et al. 2006; Thain and Simanis 2013; Tiefelsdorf and Griffith 2007; see Supplementary Material). The selected eigenvector(s) effectively partition the spatial structure into a separate variable(s) that can be added to the GLM to reduce residual spatial autocorrelation down to a predetermined alpha value (here set at > 0.05). We then compare if the GLM that includes the spatial eigenvector(s) is an improvement on the model that does not include them using a likelihood ratio test. If a significant improvement ($p < 0.05$), we proceed with this model. Model diagnostics include an examination of the distribution of deviance residuals, an evaluation of residual deviations in the top and bottom 90th percentile of all deviance residuals, and an assessment of influence using Cook's distance. We measure goodness-of-fit using the likelihood r -squared (r^2_l) value, which is similar to an r -squared (r^2) value in ordinary least squares regression but is calculated as the model deviance over the deviance of a null model that includes only the intercept (see Codding and Brewer 2024). This is sometimes interpreted as the proportion deviance (analogous to variance) accounted for by the predictor variable(s) but may more appropriately be seen as a measure of how close the model fit is to a perfect fit (for more, see Faraway 2006; Zuur et al. 2009). We evaluate the effect of population density on site counts with the exponentiated model coefficient and its standard error, which represents the rate of change in site counts for each unit change in the predictor. To illustrate the model fit, we plot the best-fit line predicted by the model with 99% confidence intervals and show the predicted values for each county. All code required to replicate this analysis, plus additional details and diagnostics are available in the Supplementary Material.

Results

Figure 1 shows the distribution of unique late Holocene radiocarbon-dated archaeological sites in each county relative to ethnolinguistic population estimates across the state of California. Figure 2 provides a visualization of the relationship between the a) number, b) density, and c) log density of unique late Holocene radiocarbon-dated sites and ethnographic population density per county. Panel a highlights the lack of a clear relationship when not accounting for differences in county area. Panel b shows an emerging trend when examining dated site density (i.e., accounting for differences in county area). Panel c shows the stronger apparent trend when log-transforming the density values. Our analytical approach described above takes these factors into account within the statistical model.

Formally examining this relationship with a generalized linear model that accounts for differences in area and spatial structure reveals a strong positive relationship accounting for about 29% of the deviance in dated site count ($p = 0.0024$; Table 1). As shown in Figure 3, the predicted logged number of unique radiocarbon-dated sites increases by 1.1 (± 0.4) with each unit increase in population density. As this fit is logarithmic, taking the exponent of the coefficient shows that there are about 3.03 (± 1.4) times more

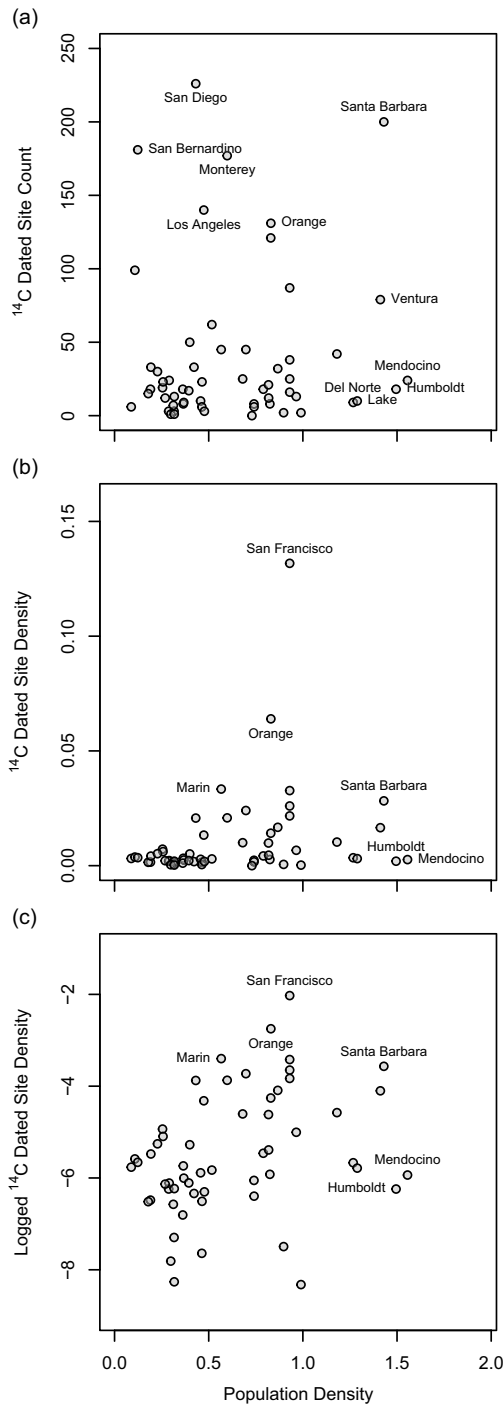


Figure 2. Three panel plot showing how the a) number, b) density, and c) log-density of unique radiocarbon-dated sites over the last 4000 radiocarbon years (from Kelly et al. 2022, updated by Meyer) varies as a function of the average estimated pre-contact population density in persons per square-kilometer (from Coddington and Jones 2013) for each county in California. For each panel, labeled counties are those in the 90th quantile of either empirical observation. Panel c helps illustrate the analytical approach undertaken here, where dated site counts are modeled with county area as an offset and a log-link between the response and predictor variables.

Table 1. Model coefficients reporting the log estimate, standard error of the estimate, incident rate ratio (exponentiated model estimate), z statistic and p-value for each term. Spatial filters selected from Moran's I eigenvectors to partition effect of spatial autocorrelation.

	Estimate	Std error	IRR	z	p
Intercept	-5.60	0.27	0.00	-20.89	<0.001
Population density	1.11	0.36	3.03	3.04	0.0024
Spatial filter (vec6)	3.38	1.06	29.25	3.18	0.0015
Spatial filter (vec7)	1.85	1.04	6.39	1.78	0.0751

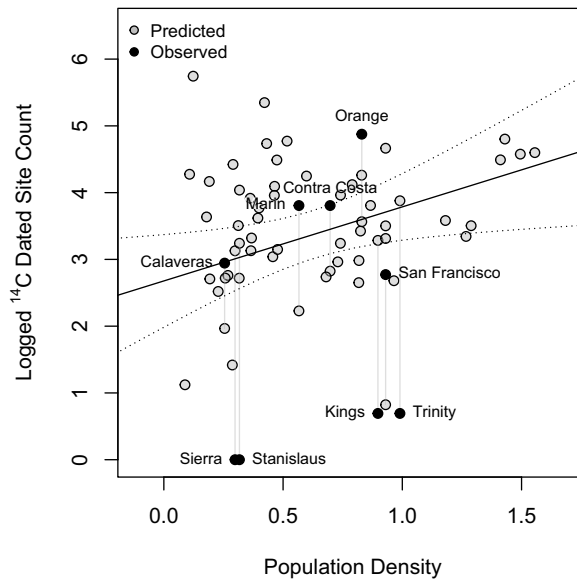


Figure 3. The relationship between dated site counts (logged) and population density fit with a negative binomial regression that accounts for differences in county size by using log area as an offset. Grey points are the predicted model fit that accounts for variation in county size. The solid black line shows the best fit for the median county size. The upper and lower dashed black lines show the 99% confidence intervals of the predicted model fit. Labeled counties are those with the highest residual variation above or below the 95% of model (deviance) residuals. Vertical grey lines illustrate the residual variation between the predicted value (grey points) and observed value (black points). Counties are labeled adjacent to their observed value.

sites expected per each unit increase in population density. This means we should expect about 44 dated sites in a median sized county with a population density of one person per square kilometer. This should increase to 134 dated sites at a population density of two persons per square kilometer, and to about 405 at a population density of three persons per square kilometer.

As Figure 3 also illustrates, there is variation in the number of unique dated sites that is not accounted for by population density. While the residual variation is normally distributed around zero, indicating a good model fit (Figure 4a), several counties have a greater number of late Holocene radiocarbon-dated sites than expected based on their estimated ethnographic population size and area. These include (from highest to lowest in the bottom 90th percentile of residuals) San Francisco, Marin, Orange, Contra Costa, Calaveras, and Monterey counties (Figure 3). These high residuals may be due to a high intensity of archaeological investigations (more below). San Francisco, Marin, and Orange counties also have a high amount of leverage in the model fit (Figure 4b). Several other counties have many fewer late

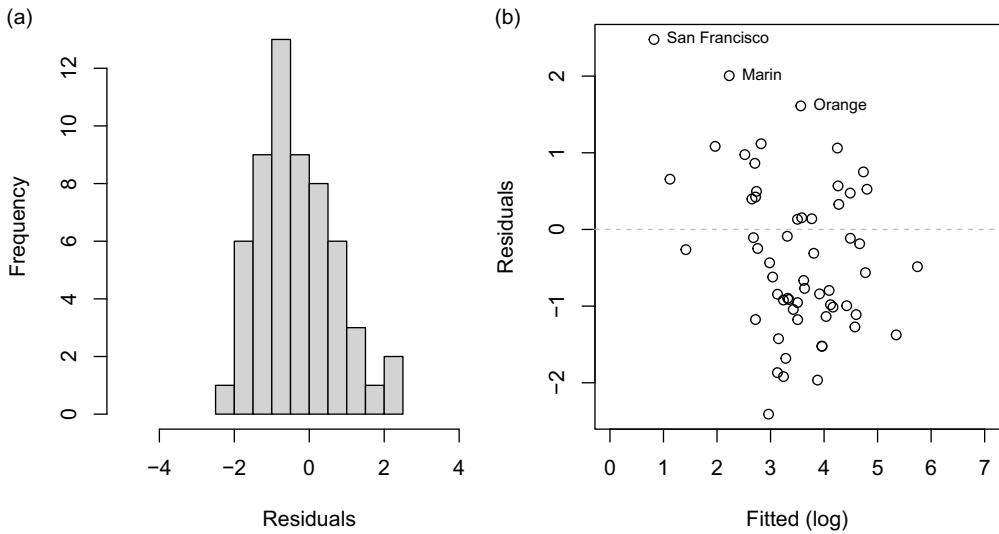


Figure 4. Distribution of model residuals (left) and plot of model residuals as a function of fitted values (right). Labeled counties have Cook's Distance measures three times the average.

Table 2. Population density coefficients for each model iteration from 0–500 BP to 0–5000 BP.

Year range	Estimate	Std error	IRR	z	p
0–500	0.94	0.36	2.57	2.62	0.0089
0–1000	0.96	0.36	2.61	2.63	0.0085
0–1500	1.01	0.37	2.74	2.73	0.0063
0–2000	1.06	0.38	2.89	2.82	0.0048
0–2500	1.09	0.38	2.98	2.90	0.0037
0–3000	1.12	0.37	3.06	2.99	0.0028
0–3500	1.14	0.37	3.12	3.04	0.0023
0–4000	1.15	0.37	3.16	3.07	0.0022
0–4500	1.18	0.37	3.25	3.15	0.0016
0–5000	1.21	0.38	3.36	3.22	0.0013

Holocene radiocarbon-dated sites than expected (from lowest to highest in the bottom 10th percentile of residuals), including Sutter, Trinity, Stanislaus, Sierra, Kings, and San Benito. These residuals may be influenced by a combination of preservation bias, landscape taphonomy, and a limited intensity of archaeological investigations (more in the discussion).

The positive relationship between dated site counts and population density is robust across varying windows of time. Iterating the model with counts of unique dated sites in 500-year bins from 0–500 to 0–5000 BP shows a consistent pattern (Table 2). The rate of increase in the number of sites as a function of population density grows larger with wider windows of time because of higher date counts (Figure 5a). This is confirmed with scaled estimates which show a consistent rate of increase (Figure 5b).

Discussion

Results show that counts of late Holocene radiocarbon-dated archaeological sites positively co-vary with ethnographic estimates of Indigenous population density. These results suggest that counts of radiocarbon-dated archaeological sites reflect some aspects of hunter-gatherer population size, and that relative changes in dated site counts over time should reflect relative changes in population density.

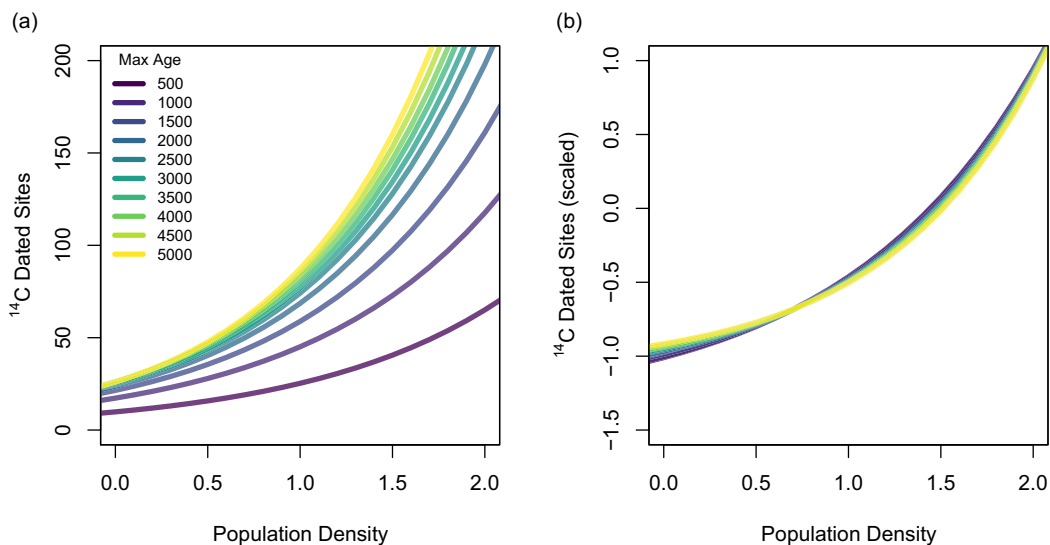


Figure 5. Model fits for increasingly longer spans of time in 500-year intervals from 0–500 to 0–5000 BP. Left panel shows the model fits by site count, with the increasing slope representing larger samples over longer spans of time. Right panel shows the model fits by scaled site count to illustrate consistency in the relationship regardless of which interval is selected.

However, the model only accounts for about 29% of the variation in dated site counts, so while population density may correlate with dates enough to facilitate the “dates-as-data” approach, some 71% of the variation in date counts is unaccounted for. Examining residual variation highlights other factors that may bias “dates-as-data” estimates away from proxies of population size. Specifically, counties with lower than expected site counts may experience preservation bias which limits the availability of organic material (Collins et al. 2002) especially in acidic soils or regions with higher precipitation, a lower intensity of archaeological investigations (Bird et al. 2022; Kelly et al. 2022), and landscape taphonomy, or how geologic processes structure the preservation, discovery, and recovery of archaeological sites and materials (Contreras and Codding 2023; Surovell et al. 2009).

For example, counties with fewer than expected dated sites include three in the central valley of California—Kings, Stanislaus, and Sutter—where geomorphological processes influenced by deposition from the San Joaquin and Sacramento Rivers and their tributaries (Meyer 2020; Meyer et al. 2010; Meyer and Rosenthal 2008; Murphy and Meyer 2016; Rosenthal and Meyer 2004a), such as the Kings River Fan in Kings County, may erode and/or bury sites. Two other counties—Sierra and Trinity—occupy portions of the Sierra Nevada and North Coast ranges, respectively, which are less conducive environments for preservation of organic material. In addition to landscape taphonomy, Sierra and Trinity counties also have the lowest and third lowest GDP per capita, respectively, which may indicate limited development-driven contract work. The last county in this group—San Benito County—provides a telling example when compared to its neighbor, Monterey County.

San Benito County has very few radiocarbon dates from late Holocene archaeological sites and the sixth lowest residual after the five discussed above, but has an estimated population density estimate near the mean of the sample. This underestimate may also be due in part to the effects of landscape taphonomy. San Benito County is in the southernmost end of Santa Clara Valley, which Rosenthal and Meyer (2004b) show has a high proportion of buried sites due to active erosion and deposition. Development may also play a role in San Benito County, which is relatively small, has a relatively low contemporary population size (ranks 42 out of 58, US Census Bureau 2022), and a relatively low GDP (ranks 40, US Department of Commerce 2022), which may translate into below average development-driven CRM investigations. It also has no major military installations which may drive well-funded archaeological investigations. By

contrast, neighboring Monterey County has significantly more dated sites than would be expected based on its ethnographic population density and area (the sixth highest residual). This is likely due in part to long-standing, development-driven contract work and research with an emphasis on radiocarbon dating well-preserved shell middens (e.g., Breschini and Haversat 2004, 2002). The county has a relatively high contemporary population size (ranks 21, US Census Bureau 2022) and GDP (ranks 20, US Department of Commerce 2022), in addition to being the home to current (Presidio of Monterey) and former (Fort Ord) military installations.

The other counties in the top 90th percentile of residuals are, in order, San Francisco, Marin, Orange, Contra Costa, and Calaveras. San Francisco has the greatest residual variation of any county, with significantly more site counts than expected. San Francisco also has a very high GDP (ranks 5, US Department of Commerce 2022) and contemporary population size (ranks 12 in count and 1 in density, US Census Bureau 2022), which combine to drive significant development-related archaeological investigations. These factors may also explain the higher site counts for adjacent counties in the San Francisco Bay Area, including Marin, Contra Costa, and San Mateo. Orange County similarly has a high GDP (ranks 3, US Department of Commerce 2022) and third highest population size (US Census Bureau 2022). Calaveras county, however, has high residuals and a low contemporary population size (ranks 44, US Census Bureau 2022) and relatively low GDP (ranks 45, US Department of Commerce 2022), which suggests something else may be driving the high dated site count.

Interestingly, some counties with both high and low ethnographic population densities have fewer dated sites than expected (e.g., Sierra and Trinity). We suggest this is in part due to environmental factors that influence both the preservation of organic material, landscape activity, and population size itself. While hunter-gatherer population density scales with environmental productivity in the region (Baumhoff 1963; Coddling and Jones 2013) and globally (Tallavaara et al. 2018; Zhu et al. 2021), extreme low and high productivity environments are also poor conditions for the preservation of organic material suitable for radiocarbon dating (e.g., Brock et al. 2010; Bronk Ramsey 2008; Collins et al. 2002).

Another issue limiting the potential fit between ethnographic density estimates and radiocarbon-dated site counts is potential bias in ethnographic population density estimates themselves. Our interpretation above implicitly assumes that the ethnographic population are “true”, but this is certainly not the case. Some argue post-contact estimates systematically underestimate pre-contact population sizes as a result of protohistoric disease (Erlandson et al. 2001; Erlandson and Bartoy 1996, 1995; Preston 1997, 1996). However, population estimates may not be systematic underestimates given recent evidence for a late onset of increased mortality resulting from disruptive Spanish colonial practices (Jones et al. 2021). Nonetheless, there may be bias in these estimates resulting from other factors including the duration between European contact and when the ethnographic estimates were made, which is systematically greater along the coast adjacent to Spanish missions.

An additional confound on the relationship between ethnographic population estimates and site counts is the degree of economic intensification (Boserup 1965; see, e.g., Coddling and Bird 2015; Morgan 2015). Despite sharing the general adaptation of hunting and gathering, Indigenous populations in California varied significantly in their specific subsistence strategies and economic intensification (e.g., Basgall 1987; Beaton 1991; Broughton 1999; Tushingham and Bettinger 2013; Whitaker and Byrd 2014). This may lead to differences in the deposition and distribution of datable material (Freeman et al. 2018), as well as differences in mobility (e.g., Keeley 1988; Kelly 1983) and aggregation (e.g., Coddling et al. 2019; Haas et al. 2015), all of which may bias dated site counts.

One final complicating factor is the reliance on alternative dating methods in some regions where organic samples for radiocarbon dating are still available. In California this tends to occur in locations where obsidian is abundant, providing a less expensive dating method, albeit one that is less precise than radiocarbon dating (Anovitz et al. 1999), despite significant analytical improvements in recent years (Rogers and Duke 2011; Rogers and Yohe 2020). Research programs in counties including Lake, Sonoma, and Napa have developed longstanding traditions of research examining obsidian hydration dating (Fredrickson 1989; Meighan and Haynes 1970; Origer and Wickstrom 1982). It is also prevalent in counties where radiocarbon dating is less viable due to poor preservation, such as in the Mojave

Desert (Eerkens et al. 2007; Jenkins and Warren 1984) and Sierra Nevada Range (Hull 2001; Stevens et al. 2017). As such, more comprehensive evaluations of population size using dates-as-data will require the incorporation of additional dates from diverse dating methods. This is true not only in California, but in many other regions where obsidian (e.g., Tripcevich et al. 2012), tree ring dates (e.g., Bocinsky et al. 2016; Liebmann et al. 2016) and ceramic chronologies (e.g., Ortman 2016) supplant the use of radiocarbon due to cost, sample ubiquity, and research questions. Combining these methods to estimate site counts is an emerging area of research (Crema and Kobayashi 2020; Palmisano et al. 2017).

Despite these complications and limitations, the counts of radiocarbon-dated sites in California reflect population density across increasing windows of time. We suggest this pattern persists through the late Holocene given that populations were likely at spatial equilibrium. As such, while absolute population density may have changed through time, the relative density across space at any one time was likely consistently patterned by habitat suitability (Bettinger 2015; Codding and Jones 2013). This would result if individuals distributed themselves so to maximize their per capita suitability relative to local population density (Fretwell and Lucas 1969), a pattern increasingly supported by ethnographic (Moritz et al. 2015), historic (Yaworsky and Codding 2018), and archaeological investigations (for reviews, see Codding and Bird 2015; Weitzel and Codding 2020). This is likely true globally, as underlying environmental conditions seem to structure hunter-gatherer population density generally (e.g., Binford 2001; Birdsell 1953; Kavanagh et al. 2018; Tallavaara et al. 2018; Zhu et al. 2021). While this framework assumes individuals are free to distribute themselves, this was certainly not the case across all of Indigenous California (Bettinger 2015; Kroeber 1925), which might further help account for departures between predicted and observed estimates during specific windows of time if populations were territorially circumscribed (e.g., Codding and Jones 2013; Whitaker and Byrd 2014). Nonetheless, population patterning should approximate equilibrium across such a large spatial extent over long spans of time.

Conclusion

We consider this an encouraging, albeit preliminary, empirical appraisal of the “dates-as-data” approach. Though this finding does not mean the approach can or should be applied without caution. Future work should replicate this study in other regions, and examine how to systematically account for patterned bias driven by differences in economic intensity (Freeman et al. 2018), landscape taphonomy (Contreras and Codding 2023; Meyer 2020 1996; Rosenthal and Meyer 2004b; Surovell et al. 2009), and the intensity of archaeological investigations (Bird et al. 2022; Rick 1987). Future validation studies should also incorporate multiple dating methods (Crema and Kobayashi 2020; Crema and Shoda 2021). Such studies are critical for identifying the contexts in which “dates-as-data” functions as a valid—although imprecise—proxy of past population size.

Acknowledgments. The authors are grateful for generations of California archaeologists who systematically ran and compiled radiocarbon dates, including Gary Breschini, Trudy Havensat, Michael Glassow, and Jon Erlandson. The authors benefited from discussions with Adie Whitaker, Peter Yaworsky, Nathan Stevens, Kenneth Blake Vernon, and Daniel Contreras. Thanks to two anonymous reviewers and Kimberley Elliott for detailed comments and edits that improved the paper. This work was supported in part by National Science Foundation grants to RLK (BCS-1418858, -1624061, and -1822033) and BFC (BCS-1921072).

Competing interests declaration. The authors declare no competing interests.

Supplementary material. Data and code required to replicate this analysis is available in the supplementary information.

References

- Anovitz LM, Elam JM, Riciputi LR and Cole DR (1999) The failure of obsidian hydration dating: Sources, implications, and new directions. *Journal of Archaeological Science* **26**, 735–752. <https://doi.org/10.1006/jasc.1998.0342>.
- Basgall ME (1987) Resource intensification among hunter-gatherers: Acom economies in prehistoric California. *Research in Economic Anthropology* **9**, 21–52.
- Baumhoff MA (1963) Ecological determinants of aboriginal California populations. *University of California Publications in American Archaeology and Ethnology* **49**, 155–236.

- Beaton JM (1991) Extensification and intensification in central California prehistory. *Antiquity* **65**, 946–952. <https://doi.org/10.1017/S0003598X00080741>.
- Bettinger RL (2015) *Orderly Anarchy: Sociopolitical Evolution in Aboriginal California*. University of California Press.
- Bevan A, Colledge S, Fuller D, Fyfe R, Shennan S and Stevens C (2017) Holocene fluctuations in human population demonstrate repeated links to food production and climate. *Proc. Natl. Acad. Sci. U.S.A.* **114**. <https://doi.org/10.1073/pnas.1709190114>.
- Binford LR (2001) *Constructing Frames of Reference*. Berkeley: University of California Press.
- Bird D, Miranda L, Vander Linden M, Robinson E, Bocinsky RK, Nicholson C, Capriles JM, Finley JB, Gayo EM, Gil A, et al. (2022) p3k14c, a synthetic global database of archaeological radiocarbon dates. *Sci Data* **9**, 27. <https://doi.org/10.1038/s41597-022-01118-7>.
- Birdsell JB (1953) Some environmental and cultural factors influencing the structuring of Australian Aboriginal populations. *The American Naturalist* **87**, 171–207.
- Bivand RS, Pebesma E and Gómez-Rubio V (2013) *Applied Spatial Data Analysis with R*. New York: Springer. <https://doi.org/10.1007/978-1-4614-7618-4>.
- Blois JL, Williams JW, Fitzpatrick MC, Jackson ST and Ferrier S (2013) Space can substitute for time in predicting climate-change effects on biodiversity. *Proc. Natl. Acad. Sci. U.S.A.* **110**, 9374–9379. <https://doi.org/10.1073/pnas.1220228110>.
- Bocinsky RK, Rush J, Kintigh KW and Kohler TA (2016) Exploration and exploitation in the macrohistory of the pre-Hispanic Pueblo Southwest. *Science Advances* **2**, e1501532.
- Bolker BM (2015) Linear and generalized linear mixed models. In Fox GA, Negrete-Yankelevich S and Sosa VJ (eds), *Ecological Statistics*. Oxford University Press, 309–333. <https://doi.org/10.1093/acprof:oso/9780199672547.003.0014>.
- Bolker BM, Brooks ME, Clark CJ, Geange SW, Poulsen JR, Stevens MHH and White J-SS (2009) Generalized linear mixed models: a practical guide for ecology and evolution. *Trends in Ecology & Evolution* **24**, 127–135.
- Boserup E (1965) *The Conditions of Agricultural Growth: The Economics of Agrarian Change under Population Pressure*. Chicago: Aldine.
- Breschini GS and Haversat T (2004) A Revised Culture Sequence for the Monterey Peninsula Area, California. *Pacific Coast Archaeological Society Quarterly* **44**, 1–24.
- Breschini GS and Haversat T (2002) Radiocarbon dating and cultural models on the Monterey Peninsula, California. *Pacific Coast Archaeological Society Quarterly* **38**, 1–64.
- Breschini GS, Haversat T and Erlandson JM (2004) *California Radiocarbon Dates: An Online Database*. Salinas, CA: Coyote Press.
- Breschini GS, Haversat T and Erlandson JM (1996) *California Radiocarbon Dates*, 8th Edition.
- Brock F, Higham T and Ramsey CB (2010) Pre-screening techniques for identification of samples suitable for radiocarbon dating of poorly preserved bones. *Journal of Archaeological Science* **37**, 855–865. <https://doi.org/10.1016/j.jas.2009.11.015>.
- Bronk Ramsey C (2008) Radiocarbon dating: revolutions in understanding. *Archaeometry* **50**, 249–275. <https://doi.org/10.1111/j.1475-4754.2008.00394.x>.
- Broughton JM (1999) *Resource Depression and Intensification During the Late Holocene, San Francisco Bay, Anthropological Records*. Berkeley: University of California Publications.
- Brown WA (2015) Through a filter, darkly: Population size estimation, systematic error, and random error in radiocarbon-supported demographic temporal frequency analysis. *Journal of Archaeological Science* **53**, 133–147.
- California Department of Technology (2016) CA Geographic Boundaries [WWW Document]. URL <https://data.ca.gov/dataset/ca-geographic-boundaries>.
- Carleton WC (2021) Evaluating Bayesian Radiocarbon-dated Event Count (REC) models for the study of long-term human and environmental processes. *J. Quaternary Sci.* **36**, 110–123. <https://doi.org/10.1002/jqs.3256>.
- Carleton WC and Groucutt HS (2021) Sum things are not what they seem: Problems with point-wise interpretations and quantitative analyses of proxies based on aggregated radiocarbon dates. *The Holocene* **31**, 630–643. <https://doi.org/10.1177/0959683620981700>.
- Chaput MA and Gajewski K (2016) Radiocarbon dates as estimates of ancient human population size. *Anthropocene* **15**, 3–12. <https://doi.org/10.1016/j.ancene.2015.10.002>.
- Chaput MA, Kriesche B, Betts M, Martindale A, Kulik R, Schmidt V and Gajewski K (2015) Spatiotemporal distribution of Holocene populations in North America. *Proceedings of the National Academy of Sciences* **112**, 12127–12132.
- Codding BF and Bird DW (2015) Behavioral ecology and the future of archaeological science. *Journal of Archaeological Science* **56**, 9–20. <https://doi.org/10.1016/j.jas.2015.02.027>.
- Codding BF, Brenner Coltrajn J, Louderback L, Vernon KB, Magargal KE, Yaworsky PM, Robinson E, Brewer SC, Spangler JD (2022) Socioecological Dynamics Structuring the Spread of Farming in the North American Basin-Plateau Region. *Environmental Archaeology* **27**, 434–446. <https://doi.org/10.1080/14614103.2021.1927480>.
- Codding BF and Brewer SC (2024) Regression with archaeological count data. *Advances in Archaeological Practice*. <https://doi.org/10.1017/aap.2024.7>.
- Codding BF and Jones TL (2013) Environmental productivity predicts migration, demographic, and linguistic patterns in prehistoric California. *PNAS* **110**, 14569–14573. <https://doi.org/10.1073/pnas.1302008110>.
- Codding BF, Parker AK and Jones TL (2019) Territorial behavior among Western North American foragers: Allee effects, within group cooperation, and between group conflict. *Quaternary International* **518**, 31–40. <https://doi.org/10.1016/j.quaint.2017.10.045>.
- Codding BF, Roberts H, Eckerle W, Brewer SC, Medina ID, Vernon KB and Spangler JS (2023) Can we reliably detect adaptive responses of hunter-gatherers to past climate change? Examining the impact of Mid-Holocene drought on Archaic settlement in

- the Basin-Plateau Region of North America. *Quaternary International* S1040618223002215. <https://doi.org/10.1016/j.quaint.2023.06.014>.
- Collins MJ, Nielsen-Marsh CM, Hiller J, Smith CI, Roberts JP, Prigodich RV, Wess TJ, Csapò J, Millard AR and Turner-Walker G (2002) The survival of organic matter in bone: a review. *Archaeometry* **44**, 383–394. <https://doi.org/10.1111/1475-4754.t01-1-00071>.
- Contreras DA and Codding BF (2023) Landscape Taphonomy Predictably Complicates Demographic Reconstruction. *J. Archaeol. Method Theory*. <https://doi.org/10.1007/s10816-023-09634-5>.
- Contreras DA and Meadows J (2014) Summed radiocarbon calibrations as a population proxy: a critical evaluation using a realistic simulation approach. *Journal of Archaeological Science* **52**, 591–608.
- Cook SF (1955) *The Aboriginal Population of the San Joaquin Valley, California*. University of California Publications.
- Cook SF (1956) *The Aboriginal Population of the North Coast of California, Anthropological Records*. University of California Publications.
- Cook SF (1976) *The Population of the California Indians 1769–1970*. UC Press.
- Crema ER (2021) Statistical inference of prehistoric demography from frequency distributions of radiocarbon dates: a review and a guide for the perplexed (preprint). SocArXiv. <https://doi.org/10.31235/osf.io/grcs2>.
- Crema ER and Bevan A (2021) Inference from large sets of radiocarbon dates: Software and methods. *Radiocarbon* **63**, 23–39. <https://doi.org/10.1017/RDC.2020.95>.
- Crema ER, Bevan A and Shennan S (2017) Spatio-temporal approaches to archaeological radiocarbon dates. *Journal of Archaeological Science* **87**, 1–9.
- Crema ER, Habu J, Kobayashi K and Madella M (2016) Summed probability distribution of ¹⁴C dates suggests regional divergences in the population dynamics of the Jomon period in eastern Japan. *PLoS One* **11**, e0154809.
- Crema ER and Kobayashi K (2020) A multi-proxy inference of Jōmon population dynamics using Bayesian phase models, residential data, and summed probability distribution of ¹⁴C dates. *Journal of Archaeological Science* **117**, 105136. <https://doi.org/10.1016/j.jas.2020.105136>.
- Crema ER and Shoda S (2021) A Bayesian approach for fitting and comparing demographic growth models of radiocarbon dates: A case study on the Jomon-Yayoi transition in Kyushu (Japan). *PLoS ONE* **16**, e0251695. <https://doi.org/10.1371/journal.pone.0251695>.
- DiNapoli RJ, Crema ER, Lipo CP, Rieth TM and Hunt TL (2021) Approximate Bayesian computation of radiocarbon and paleoenvironmental record shows population resilience on Rapa Nui (Easter Island). *Nat. Commun.* **12**, 3939. <https://doi.org/10.1038/s41467-021-24252-z>.
- Dray S, Legendre P and Peres-Neto PR (2006) Spatial modelling: a comprehensive framework for principal coordinate analysis of neighbour matrices (PCNM). *Ecological Modelling* **196**, 483–493. <https://doi.org/10.1016/j.ecolmodel.2006.02.015>.
- Eerkens JW, Rosenthal JS, Young DC and King J (2007) Early Holocene landscape archaeology in the Coso Basin, northwestern Mojave Desert, California. *North American Archaeologist* **28**, 87–112. <https://doi.org/10.2190/NA.28.2.a>.
- Erlandson JM and Bartoy K (1996) Protohistoric California: paradise or pandemic? *Proceedings of the Society for California Archaeology* **9**, 304–309.
- Erlandson JM and Bartoy K (1995) Cabrillo, the Chumash, and Old World diseases. *Journal of California and Great Basin Anthropology* **17**, 153–173.
- Erlandson JM, Rick TC, Kennett DJ and Walker PL (2001) Dates, demography, and disease: cultural contacts and possible evidence for Old World epidemics among the Island Chumash. *Pacific Coast Archaeological Society Quarterly* **37**, 11–26.
- Faraway JJ (2006) *Extending the Linear Model with R: Generalized Linear, Mixed Effects and Nonparametric Regression Models*. New York: Chapman and Hall.
- Fredrickson DA (1989) Spatial and temporal patterning of obsidian materials in the Geysers region. In Hughes RE (ed), *Current Directions in California Obsidian Studies, Contributions of the University of California Archaeological Research Facility*, 95–109.
- Freeman J, Byers DA, Robinson E and Kelly RL (2018) Culture process and the interpretation of radiocarbon data. *Radiocarbon* **60**, 453–467. <https://doi.org/10.1017/RDC.2017.124>.
- Fretwell SD and Lucas HL (1969) On territorial behavior and other factors influencing habitat distribution in birds: I. Theoretical development. *Acta Biotheoretica* **19**, 16–36. <https://doi.org/10.1007/BF01601953>.
- Glassow MA (1999) Measurement of population growth and decline during California prehistory. *Journal of California and Great Basin Anthropology* **21**, 45–66.
- Haas WR, Klink CJ, Maggard GJ and Aldenderfer MS (2015) Settlement-size scaling among prehistoric hunter-gatherer settlement systems in the New World. *PLoS ONE* **10**, e0140127. <https://doi.org/10.1371/journal.pone.0140127>.
- Heizer RF (1978) *Handbook of North American Indians, Volume 8: California*. Washington, DC: Smithsonian Institution.
- Hijmans RJ (2018) *raster: Geographic Data Analysis and Modeling*.
- Hull KL (2001) Reasserting the utility of obsidian hydration dating: A temperature-dependent empirical approach to practical temporal resolution with archaeological obsidians. *Journal of Archaeological Science* **28**, 1025–1040. <https://doi.org/10.1006/jasc.2000.0629>.
- Jenkins DL and Warren CN (1984) Obsidian hydration and the Pinto chronology in the Mojave Desert. *Journal of California and Great Basin Anthropology* **6**, 44–60.
- Jones TL, Schwitalla AW, Pilloud MA, Johnson JR, Paine RR and Codding BF (2021) Historic and bioarchaeological evidence supports late onset of post-Columbian epidemics in Native California. *Proc. Natl. Acad. Sci. U.S.A.* **118**, e2024802118. <https://doi.org/10.1073/pnas.2024802118>.

- Kavanagh PH, Vilela B, Haynie HJ, Tuff T, Lima-Ribeiro M, Gray RD, Botero CA and Gavin MC (2018) Hindcasting global population densities reveals forces enabling the origin of agriculture. *Nature Human Behaviour* **2**, 478–484. <https://doi.org/10.1038/s41562-018-0358-8>.
- Keeley LH (1988) Hunter-gatherer economic complexity and “population pressure”: a cross-cultural analysis. *Journal of Anthropological Archaeology* **7**, 373–411. [https://doi.org/10.1016/0278-4165\(88\)90003-7](https://doi.org/10.1016/0278-4165(88)90003-7).
- Kelly RL (1983) Hunter-gatherer mobility strategies. *Journal of Anthropological Research* **39**, 277–306.
- Kelly RL, Mackie ME, Robinson E, Meyer J, Berry M, Boulanger M, Coddling BF, Freeman J, Garland CJ, Gingerich J, Hard R, Haug J, Martindale A, Meeks S, Miller M, Miller S, Perttula T, Railey JA, Reid K, Scharlotta I, Spangler J, Thomas DH, Thompson V and White A (2022) a new radiocarbon database for the Lower 48 states. *Am. Antiq.* 1–10. <https://doi.org/10.1017/aaq.2021.157>.
- Kelly RL, Surovell TA, Shuman BN and Smith GM (2013) A continuous climatic impact on Holocene human population in the Rocky Mountains. *Proceedings of the National Academy of Sciences* **110**, 443–447.
- Kroeber AL (1925) *Handbook of the Indians of California*. Smithsonian Institution, Bureau of American Ethnology.
- Liebmann MJ, Farella J, Roos CI, Stack A, Martini S and Swetnam TW (2016) Native American depopulation, reforestation, and fire regimes in the Southwest United States, 1492–1900 CE. *Proc. Natl. Acad. Sci. U.S.A.* **113**. <https://doi.org/10.1073/pnas.1521744113>.
- Lovell RSL, Collins S, Martin SH, Pigot AL and Phillimore AB (2023) Space-for-time substitutions in climate change ecology and evolution. *Biological Reviews* **98**, 2243–2270. <https://doi.org/10.1111/brv.13004>.
- McCool WC, Coddling BF, Vernon KB, Wilson KM, Yaworsky PM, Marwan N and Kennett DJ (2022) Climate change–induced population pressure drives high rates of lethal violence in the Prehispanic central Andes. *PNAS* **119**, e2117556119. <https://doi.org/10.1073/pnas.2117556119>.
- Meighan CW and Haynes CV (1970) The Borax Lake Site Revisited: Reanalysis of the geology and artifacts gives evidence of an early man location in California. *Science* **167**, 1213–1221. <https://doi.org/10.1126/science.167.3922.1213>.
- Meyer J (1996) Geoaarchaeological Implications of Holocene Landscape Evolution in the Los Vaqueros Area of Eastern Contra Costa County, California. Master’s thesis. Cultural Resources Management, Department of Anthropology, Sonoma State University, Rohnert Park, California.
- Meyer J (2020) *Geoarchaeological Assessment and Extended Phase I Study of the Friant-Kern Canal Middle Reach Capacity Correction Project for the San Joaquin River Restoration Program, Tulare and Kern Counties, California*. Far Western Anthropological Research Group, Inc, Davis, California. Submitted to Bureau of Reclamation, Sacramento, California.
- Meyer J and Rosenthal JS (2008) *A Geoarchaeological Overview and Assessment of Caltrans District 3—Cultural Resources Inventory of Caltrans District 3 Rural Conventional Highways*. Far Western Anthropological Research Group, Inc, Davis, California. Submitted to California Department of Transportation, District 3, North Region, Marysville.
- Meyer J, Young DC and Rosenthal JS (2010) *A Geoarchaeological Overview and Assessment of Caltrans Districts 6 and 9. Cultural Resources Inventory of Caltrans Districts 6/9, Rural Conventional Highways*. Far Western Anthropological Research Group, Inc, Davis, California. On file, California Department of Transportation, District 6, Fresno.
- Morgan C (2015) Is it intensification yet? Current archaeological perspectives on the evolution of hunter-gatherer economies. *Journal of Archaeological Research* **23**, 1–51. <https://doi.org/10.1007/s10814-014-9079-3>.
- Moritz M, Hamilton IM, Yoak AJ, Scholte P, Cronley J, Maddock P and Pi H (2015) Simple movement rules result in ideal free distribution of mobile pastoralists. *Ecological Modelling* **305**, 54–63.
- Murphy LR and Meyer J (2016) *Geoarchaeological Assessment of Reach 2B for the San Joaquin River Restoration Project, Fresno and Madera Counties, California*. Far Western Anthropological Research Group, Inc, Davis, California. Submitted to Bureau of Reclamation, Sacramento, California.
- O’Hara R and Kotze J (2010) Do not log-transform count data. *Nature Precedings* <https://doi.org/10.1038/npre.2010.4136.1>.
- Openshaw S (1983) *The Modifiable Areal Unit Problem, Concepts and Techniques in Modern Geography*. Geo Books, Norwich [Norfolk].
- Origer TM, Wickstrom BP (1982) The use of hydration measurements to date obsidian materials from Sonoma County, California. *Journal of California and Great Basin Anthropology* **4**, 123–131.
- Ortman SG (2016) Uniform Probability Density Analysis and Population History in the Northern Rio Grande. *J Archaeol Method Theory* **23**, 95–126. <https://doi.org/10.1007/s10816-014-9227-6>.
- Palmisano A, Bevan A and Shennan S (2017) Comparing archaeological proxies for long-term population patterns: An example from central Italy. *Journal of Archaeological Science* **87**, 59–72. <https://doi.org/10.1016/j.jas.2017.10.001>.
- Peros MC, Munoz SE, Gajewski K and Viau AE (2010) Prehistoric demography of North America inferred from radiocarbon data. *Journal of Archaeological Science* **37**, 656–664.
- Preston W (1997) Serpent in the garden: Environmental change in colonial California. *California History* **76**, 260–298. <https://doi.org/10.2307/25161669>.
- Preston W (1996) Serpent in Eden: Dispersal of foreign diseases into pre-mission California. *Journal of California and Great Basin Anthropology* **18**, 2–37.
- R Core Team (2022) *R: A Language and Environment for Statistical Computing*. Vienna, Austria: R Foundation for Statistical Computing.
- Rick JW (1987) Dates as data: an examination of the Peruvian preceramic radiocarbon record. *American Antiquity* **55**–73.
- Riris P (2018) Dates as data revisited: A statistical examination of the Peruvian preceramic radiocarbon record. *Journal of Archaeological Science* **97**, 67–76. <https://doi.org/10.1016/j.jas.2018.06.008>.

- Robinson E, Bocinsky RK, Bird D, Freeman J and Kelly RL (2021) Dendrochronological dates confirm a Late Prehistoric population decline in the American Southwest derived from radiocarbon dates. *Phil. Trans. R. Soc. B* **376**, 20190718. <https://doi.org/10.1098/rstb.2019.0718>.
- Robinson E, Zahid HJ, Codding BF, Haas R and Kelly RL (2019) Spatiotemporal dynamics of prehistoric human population growth: Radiocarbon “dates as data” and population ecology models. *Journal of Archaeological Science* **101**, 63–71.
- Rogers AK and Duke D (2011) An archaeologically validated protocol for computing obsidian hydration rates from laboratory data. *Journal of Archaeological Science* **38**, 1340–1345. <http://doi.org/10.1016/j.jas.2011.01.012>.
- Rogers AK and Yohe RM (2020) Obsidian hydration dating of proposed Paleoindian artifacts from Tulare Lake, California. *California Archaeology* **12**, 223–239. <https://doi.org/10.1080/1947461X.2020.1812028>.
- Rosenthal JS and Meyer J (2004a) *Cultural Resources Inventory of Caltrans District 10 Rural Conventional Highways. Volume III: Geoarchaeological Study; Landscape Evolution and the Archaeological Record of Central California*. Far Western Anthropological Research Group, Inc., Davis, California. Submitted to California Department of Transportation, District 10, Stockton. On file, Central California Information Center, California State University, Stanislaus.
- Rosenthal JS and Meyer J (2004b) Landscape evolution and the archaeological record: A geoarchaeological study of the southern Santa Clara Valley and surrounding region. *Center for Archaeological Research at Davis Publication 14*. University of California, Davis.
- Shennan S, Downey SS, Timpson A, Edinborough K, Colledge S, Kerig T, Manning K and Thomas MG (2013) Regional population collapse followed initial agriculture booms in mid-Holocene Europe. *Nature Communications* **4**, 2486.
- Steele J (2010) Radiocarbon dates as data: quantitative strategies for estimating colonization front speeds and event densities. *Journal of Archaeological Science* **37**, 2017–2030. <https://doi.org/10.1016/j.jas.2010.03.007>.
- Stevens NE, Whitaker AR and Rosenthal J (2017) Bedrock mortars as indicators of territorial behavior in the Sierra Nevada. *Quaternary International* **518**, 57–68.
- Surovell TA, Finley JB, Smith GM, Brantingham PJ and Kelly R (2009). Correcting temporal frequency distributions for taphonomic bias. *Journal of Archaeological Science* **36**, 1715–1724.
- Tallavaara M, Eronen JT and Luoto M (2018) Productivity, biodiversity, and pathogens influence the global hunter-gatherer population density. *Proceedings of the National Academy of Sciences* **115**, 1232–1237. <https://doi.org/10.1073/pnas.1715638115>.
- Thayn JB and Simanis JM (2013) Accounting for spatial autocorrelation in linear regression models using spatial filtering with eigenvectors. *Annals of the Association of American Geographers* **103**, 47–66. <https://doi.org/10.1080/00045608.2012.685048>.
- Tiefelsdorf M and Griffith DA (2007) Semiparametric filtering of spatial autocorrelation: The Eigenvector Approach. *Environ Plan A* **39**, 1193–1221. <https://doi.org/10.1068/a37378>.
- Timpson A, Colledge S, Crema E, Edinborough K, Kerig T, Manning K, Thomas MG, and Shennan S (2014) Reconstructing regional population fluctuations in the European Neolithic using radiocarbon dates: a new case-study using an improved method. *Journal of Archaeological Science* **52**, 549–557. <https://doi.org/10.1016/j.jas.2014.08.011>.
- Tripevich N, Eerkens JW, and Carpenter TR (2012) Obsidian hydration at high elevation: Archaic quarrying at the Chivay source, southern Peru. *Journal of Archaeological Science* **39**, 1360–1367. <https://doi.org/10.1016/j.jas.2011.11.016>.
- Tushingham S and Bettinger RL (2013) Why foragers choose acorns before salmon: Storage, mobility, and risk in aboriginal California. *Journal of Anthropological Archaeology* **32**, 527–537. <https://doi.org/10.1016/j.jaa.2013.09.003>.
- US Census Bureau (2022) California: 2020 Census.
- US Department of Commerce (2022) Gross Domestic Product by County 2021.
- Venables WN and Ripley BD (2002) *Modern Applied Statistics with S*. New York: Springer.
- Weitzel EM and Codding BF (2020) The Ideal Distribution Model and archaeological settlement patterning. *Environmental Archaeology* 1–8. <https://doi.org/10.1080/14614103.2020.1803015>.
- Whitaker AR and Byrd BF (2014) Social circumscription, territoriality, and the late Holocene intensification of small-bodied shellfish along the California coast. *The Journal of Island and Coastal Archaeology* **9**, 150–168.
- Williams AN (2012) The use of summed radiocarbon probability distributions in archaeology: A review of methods. *Journal of Archaeological Science* **39**, 578–589. <https://doi.org/10.1016/j.jas.2011.07.014>.
- Wilson KM, McCool WC, Brewer SC, Zamora-Wilson N, Schryver PJ, Lamson RLF, Huggard AM, Brenner Coltrain J, Contreras DA and Codding BF (2022) Climate and demography drive 7000 years of dietary change in the Central Andes. *Sci. Rep.* **12**, 2026. <https://doi.org/10.1038/s41598-022-05774-y>.
- Yaworsky PM and Codding BF (2018) Ideal distribution of farmers: Explaining the Euro-American settlement of Utah. *American Antiquity* **83**, 75–90.
- Zahid HJ, Robinson E and Kelly RL (2016) Agriculture, population growth, and statistical analysis of the radiocarbon record. *Proceedings of the National Academy of Sciences* **113**, 931–935.
- Zhu D, Galbraith ED, Reyes-García V and Ciais P (2021) Global hunter-gatherer population densities constrained by influence of seasonality on diet composition. *Nat Ecol Evol* **5**, 1536–1545. <https://doi.org/10.1038/s41559-021-01548-3>.
- Zuur AF, Ieno EN, Walker NJ, Saveliev AA and Smith GM (2009) *Mixed Effects Models and Extensions in Ecology with R*. New York: Springer, 209–243. https://doi.org/10.1007/978-0-387-87458-6_9.

Cite this article: Codding BF, Meyer J, Brewer SC, Kelly RL, and Jones TL. Do counts of radiocarbon-dated archaeological sites reflect human population density? A preliminary empirical validation examining spatial variation across late Holocene California. *Radiocarbon*. <https://doi.org/10.1017/RDC.2024.81>