


Original Article

Respiratory surveillance wards as a strategy to reduce nosocomial transmission of COVID-19 through early detection: The experience of a tertiary-care hospital in Singapore

Liang En Wee MPH^{1,2} , Jenny Yi Chen Hsieh MRCP³, Ghee Chee Phua MRCP⁴, Yuyang Tan MRCP³, Edwin Philip Conceicao BSc(Nursing)⁵, Limin Wijaya MRCP², Thuan Tong Tan PhD² and Ban Hock Tan MRCP²

¹Singhealth Infectious Diseases Residency, Singapore, ²Department of Infectious Diseases, Singapore General Hospital, Singapore, ³Department of Internal Medicine, Singapore General Hospital, Singapore, ⁴Department of Respiratory and Critical Care Medicine, Singapore General Hospital, Singapore and ⁵Department of Infection Prevention and Epidemiology, Singapore General Hospital, Singapore

Abstract

Objectives: Patients with COVID-19 may present with respiratory syndromes indistinguishable from those caused by common viruses. Early isolation and containment is challenging. Although screening all patients with respiratory symptoms for COVID-19 has been recommended, the practicality of such an effort has yet to be assessed.

Methods: Over a 6-week period during a SARS-CoV-2 outbreak, our institution introduced a “respiratory surveillance ward” (RSW) to segregate all patients with respiratory symptoms in designated areas, where appropriate personal protective equipment (PPE) could be utilized until SARS-CoV-2 testing was done. Patients could be transferred when SARS-CoV-2 tests were negative on 2 consecutive occasions, 24 hours apart.

Results: Over the study period, 1,178 patients were admitted to the RSWs. The mean length-of-stay (LOS) was 1.89 days (SD, 1.23). Among confirmed cases of pneumonia admitted to the RSW, 5 of 310 patients (1.61%) tested positive for SARS-CoV-2. This finding was comparable to the pickup rate from our isolation ward. In total, 126 HCWs were potentially exposed to these cases; however, only 3 (2.38%) required quarantine because most used appropriate PPE. In addition, 13 inpatients overlapped with the index cases during their stay in the RSW; of these 13 exposed inpatients, 1 patient subsequently developed COVID-19 after exposure. No patient–HCW transmission was detected despite intensive surveillance.

Conclusions: Our institution successfully utilized the strategy of an RSW over a 6-week period to contain a cluster of COVID-19 cases and to prevent patient–HCW transmission. However, this method was resource-intensive in terms of testing and bed capacity.

(Received 3 April 2020; accepted 30 April 2020; electronically published 8 May 2020)

In the COVID-19 pandemic caused by the novel coronavirus, SARS CoV-2, attempts at containment have the best chance of reducing mortality.¹ As part of containment efforts, heightened surveillance is necessary to prevent sustained transmission in new locations.² Early isolation of patients with probable or suspected COVID-19 is important to reduce the likelihood of nosocomial spread of the disease. Early reports highlighted significant nosocomial transmission, with almost one-third of patients comprising healthcare workers (HCWs) and hospitalized inpatients.³ However, patients with COVID-19 may present with respiratory syndromes indistinguishable from those caused by common respiratory viruses,⁴ which poses a challenge for early isolation and containment.

During previous outbreaks of respiratory disease caused by novel pathogens, such as severe acute respiratory syndrome (SARS) and Middle Eastern respiratory syndrome (MERS), various admission strategies were utilized for containment, such as isolating all patients with febrile pneumonia^{5,6} or a history of travel to at-risk areas.^{7,8} However, fever may not occur in all patients with COVID-19 on initial presentation.⁹ With significant community transmission, the value of a travel history invariably declines. Given the devastating consequences of onward nosocomial transmission,¹⁰ screening all patients presenting with respiratory syndromes for COVID-19 has been advocated as a strategy.¹¹ However, the practicality of such a resource-intensive effort has yet to be studied.

In Singapore, the first imported case of COVID-19 was reported at the end of January 2020; followed by the first documented case of local transmission in early February 2020.¹² By the end of February 2020, most cases were locally transmitted.^{13,14} A substantial proportion of cases were detected by enhanced surveillance, in which patients who did not fulfill case criteria for COVID-19 were selected for testing.¹⁵ Here, we report our experience with a novel

Author for correspondence: Dr Wee Liang En Ian, E-mail: ian.wee@mohh.com.sg

Cite this article: Wee LE, et al. (2020). Respiratory surveillance wards as a strategy to reduce nosocomial transmission of COVID-19 through early detection: The experience of a tertiary-care hospital in Singapore. *Infection Control & Hospital Epidemiology*, 41: 820–825. <https://doi.org/10.1017/ice.2020.207>

concept, a respiratory surveillance ward (RSW), which was introduced as a strategy for admission, triage and disposition of patients presenting with respiratory syndromes during a SARS-CoV-2 outbreak.

Methods

Institutional setting and study period

Singapore General Hospital (SGH) is a 1,785-bed, public, tertiary-care hospital in Singapore. On average, almost 2,000 cases of pneumonia are admitted through the emergency department (ED) each year, or ~36 patients per week.¹⁶ At our hospital, most patients are nursed in multibed cohort rooms rather than in single-occupancy rooms. We describe the experience with our institution's RSWs over a 6-week period from February 5 through March 18, 2020, during the SARS-CoV-2 outbreak with community transmission.

Respiratory surveillance wards (RSWs): Admissions criteria, layout, infection control, and transfer criteria

At our institution, high-risk patients that fulfilled suspect case criteria for COVID-19 were admitted to an isolation ward with 37 negative-pressure rooms. For protection, staff in the isolation ward used N95 masks, eye protection (face shields), and disposable caps, gowns, and gloves. In general, the official suspect case criteria from our local Ministry of Health comprised a compatible clinical syndrome (pneumonia or acute respiratory disease of varying severity), together with a history of travel to high-risk countries affected by COVID-19, and/or epidemiologic risk factors (eg, contact with a confirmed case of COVID-19).¹⁷ Our institution employed a broader set of internal screening criteria in our triage process in the emergency department (ED) to identify and isolate suspected COVID-19 cases early, with a cumulative sensitivity of 84.3% over the first 3 months of the outbreak.¹⁷

However, given the presence of ongoing local transmission, we recognized that patients presenting with respiratory syndromes, but without any suspicious travel history or epidemiology links, might still have unsuspected COVID-19. Hence, all admissions with concomitant respiratory syndromes, without a travel history in the past 14 days or epidemiologic risk factors, were first admitted to the RSWs where COVID-19 was ruled out. At the point of admission to the RSW, a distinction was made between pneumonia (defined as the presence of infiltrates on the chest radiograph) and upper respiratory tract infection (URTI, defined as the presence of respiratory symptoms such as breathlessness, cough, coryzal symptoms, but with a normal chest radiograph). For inpatients who did not have respiratory syndromes on admission but subsequently developed symptoms within 14 days of admission, primary physicians could discuss the possibility of transfer to the RSW with an infectious diseases (ID) physician.

Over the study period, 115 beds were set aside for the RSWs, comprising 38 single rooms (with dedicated bathroom) and 77 beds in cohort rooms (with 2–3 patients to a room and shared bathrooms). This ward comprised almost 10% of our hospital's bed capacity. Single rooms or cohort rooms without any other patients were prioritized for admissions prior to the utilization of shared cohort rooms. Patients suspected of having viral pneumonia (eg, normal procalcitonin, lymphopenia) were also prioritized for nursing in single rooms, depending on the clinical judgement of the attending physician and bed availability. RSWs were run by respiratory medicine or internal medicine specialists. Smaller

subspecialty cohorts were created for oncology, cardiology, renal and surgical inpatients; these cohorts were run by designated clinical leads from these subspecialties. In the RSW, we recognized the small potential risk of an unsuspected COVID-19 case; thus, a risk-stratified approach was employed for the use of personal protective equipment (PPE). At the onset, N95 masks were used when handling patients with pneumonia, and surgical masks were used for handling patients with URTI alone. From February 28 onward, given a rising number of unlinked cases detected in the community, N95 masks were used throughout the RSWs. From March 18 onward, given the increased case detection in our RSW, health-care workers (HCWs) used full PPE including N95 masks, disposable gowns, gloves, and face shields. Within the RSW, social distancing measures were employed; patients were advised to avoid mingling and provided surgical masks to wear at all times, and no visitors were allowed. Beds were spaced at least ~2 m apart by reducing the number of beds in a cohort room from 6 to 3, and partitions were placed between patient beds.¹⁸ Patients admitted to the RSW could be transferred for clinically urgent procedures/imaging investigations prior to the results of SARS-CoV-2 tests. In this case, patients wore surgical masks when being transferred and HCWs transporting patients wore N95 masks with PPE at the receiving end, adapted to the kind of procedure being performed (eg, full PPE for all potential aerosol-generating procedures). Patients in the RSW had access to full inpatient services, including allied health services, because our objective was to maintain infection control measures but not compromise patient care.

Patients admitted to the RSW for pneumonia had respiratory samples taken for SARS-CoV-2 testing on arrival; patients would only be transferred if SARS-CoV-2 tests were negative on 2 consecutive occasions at least 24 hours apart.¹⁹ The requirement for 2 tests 24 hours apart was supported by local studies demonstrating increased testing yield due to the possibility of intermittent viral shedding or variations in sampling technique.²⁰ For patients admitted into the RSW with a primary nonrespiratory condition who concomitantly had URTI, SARS-CoV-2 testing was performed if the patient was to be transferred from the designated wards, with the caveat that testing should only be done at day 5 of symptoms. This procedure was supported by local studies that obtained good testing yield when sampling patients presenting with a median of 5 days of symptoms.²⁰ Additionally, because patients with URTI symptoms were generally more well, this approach conserved testing resources in the initial phase of the outbreak. From March 1 onward, all patients with URTI alone had 1 swab done on admission, followed by the second swab on day 5 of symptom onset.

Sampling and microbiological investigations

Respiratory samples (oropharyngeal, nasopharyngeal, or sputum) were processed in our hospital's laboratory. Investigation for SARS-CoV-2 RNA was conducted using in-house qualitative real-time reverse transcription PCR (rRT-PCR) testing. The routine panel for respiratory virus testing included testing for influenza A, influenza B, respiratory syncytial virus (RSV), rhinoviruses, parainfluenza virus types 1–4, human metapneumovirus, coronaviruses, and adenoviruses. All patients with pneumonia also had sputum and blood specimens collected for culture; if they were deemed to have community-acquired pneumonia, urine was also tested for *Streptococcus* and *Legionella* antigens.

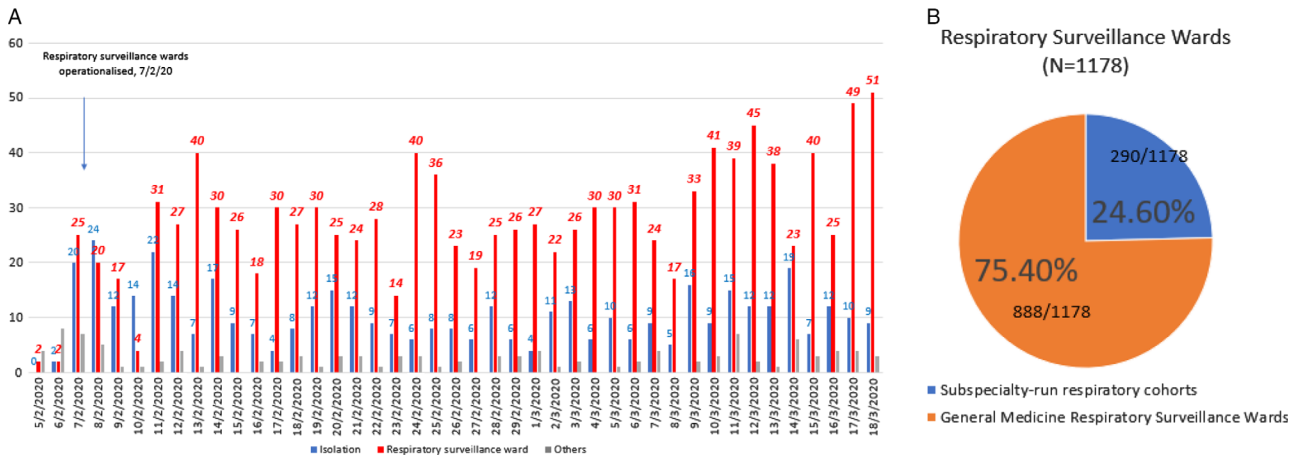


Fig. 1. Number of inpatients tested for COVID-19, broken down by isolation wards and respiratory surveillance wards in an acute tertiary hospital in Singapore over a 6-week period during a COVID-19 outbreak.

Ethics approval

This descriptive study was on surveillance data and only aggregate data were collected without patient identifiers; thus, ethics approval was not required under our hospital's institutional review board guidelines.

Results

Patient profile and numbers

Over the study period, 1,739 inpatients underwent testing for SARS-CoV-2 in our institution. Of these, 446 (25.6%) were classified as “suspected COVID-19 cases” on admission, given suspicious epidemiological features, and they were directly admitted to the isolation ward. Over the same period, 1,178 patients were admitted to the RSW because they were determined to have symptoms and signs of pneumonia or URTI at the point of ED triage, but they did not have suspicious epidemiological features. The remaining 115 patients were not initially admitted to an isolation ward or the RSW, but they had a SARS-CoV-2 test, either because they were asymptomatic on admission but developed respiratory symptoms within 14 days of admission and approval for testing was given after discussion with an ID physician, or because they were admitted directly to the intensive care unit (ICU). Thus, 1,178 of 1,739 inpatients (67.7%) tested for SARS-CoV-2 came from the RSW (Fig. 1a). In the RSWs, 888 of these 1,178 (75.3%) were managed within the general medicine RSWs (Fig. 1b); a minority were managed in the subspecialty cohorts.

Among the 888 patients managed in the general medicine RSWs, the mean length-of-stay (LOS) was 1.89 days (SD, 1.23); 319 patients (35.9%) were discharged from the ward and the rest were transferred after their SARS-CoV-2 testing was negative. Over the study period, 5 patients died on the general medicine RSW, but none died from COVID-19. The average age of admitted patients was 68 years (SD, 17.49). Also, 310 patients (34.9%) in the general medicine RSW had a diagnosis of pneumonia confirmed by the managing physician, and 200 (22.5%) had a diagnosis of URTI. The remaining 378 patients had an alternative nonrespiratory or noninfective diagnosis (eg, fluid overload). Differences in demographics, clinical characteristics, and outcomes of the 510 patients with pneumonia or URTI admitted to general medicine RSWs are presented in Table 1. Patients diagnosed with pneumonia, compared with those admitted with URTIs, tended to be older

(mean age, 72.4 vs 58.3 years; $P < .001$) and had higher odds of presenting with raised inflammatory markers such as a raised white cell count or procalcitonin. They also had lower odds of being directly discharged from the RSWs (29.0% vs 61.0%; odds ratio [OR], 0.23; 95% confidence interval [CI], 0.17–0.42).

Detection of alternative microbiologic diagnosis

The consolidated results of patients stratified by pneumonia and URTI are presented in Fig. 2. Among the 310 patients diagnosed with pneumonia, a microbiological diagnosis other than SARS-CoV-2 was obtained for 41 (13.2%) of these patients. In 27 patients, a viral etiology was identified; 18 had a bacterial etiology, 1 patient had pulmonary tuberculosis and 1 patient had *Pneumocystis* pneumonia. The most common viral pathogen identified was rhinovirus ($N = 7$), followed by parainfluenza ($N = 5$) and metapneumovirus ($N = 3$). Among the 200 patients with a URTI, a microbiological diagnosis was obtained for 50 of them (25.0%). In 51 patients, a viral etiology was identified, and 4 had a bacterial etiology. The most common viral pathogen identified was rhinovirus ($N = 16$), followed by other coronaviruses ($N = 8$) and parainfluenza ($N = 7$).

Case detection

Of the 510 patients with a final diagnosis of pneumonia or URTI admitted to the RSW, 5 (0.98%) tested positive for SARS-CoV-2. Over the same time period, among patients that fulfilled suspect case criteria for COVID-19 admitted to our institution's isolation ward, 15 of 446 patients (3.36%) tested positive for SARS-CoV-2. Over the same period, no COVID-19 cases were admitted initially to nondesignated areas outside of the RSWs or isolation wards. When cases of COVID-19 were detected, the cases were transferred to the isolation ward, the cohort room was locked down, and any potentially exposed patients (defined as a patient sharing the same cubicle as a confirmed case) were also transferred to the isolation ward as a precautionary measure. In total, 126 HCWs were potentially exposed; however, only 3 of these HCWs (2.38%) required quarantine due to noncompliance with PPE guidelines. No exposed HCWs developed COVID-19 after exposure, despite intensive surveillance over a 14-day period.²¹ HCWs deemed to have significant unprotected exposure based on our local Ministry of Health guidelines were placed under a 14-day quarantine or home isolation, during which they were monitored for

Table 1. Differences in Demographics, Clinical Characteristics, and Management Outcomes of Patients Admitted to General Medicine Respiratory Surveillance Wards in an Acute Tertiary Hospital During a COVID-19 Outbreak, Stratified by Pneumonia and Upper Respiratory Tract Illness (URTI)^a

Variable	Pneumonia (N=310)	URTI (N=200)	Odds Ratio (95% CI)
Demographics			
Age, median y (SD)	72.44 (14.96)	58.33 (20.46)	14.10 (10.00–18.20) [†]
Sex, male	166 (53.5)	97 (48.5)	0.81 (0.53–1.27)
Clinical characteristics			
Febrile on admission	144 (46.5)	86 (43.0)	0.87 (0.56–1.36)
Leukocytosis on admission	69 (22.2)	22 (11.0)	0.42 (0.22–0.80) [‡]
Raised lactate dehydrogenase	116 (37.4)	74 (37.0)	0.97 (0.62–1.53)
Raised procalcitonin	69 (22.2)	20 (10.0)	0.39 (0.20–0.75) [‡]
Clinical management outcomes			
Outcomes			
Discharge	90 (29.0)	122 (61.0)	1.00
Transfer	220 (70.9) ^b	78 (39.0)	0.23 (0.17–0.42) [†]
Delays in care experienced	5 (1.6)	7 (3.5)	2.21 (0.69–7.01)
Length of stay in respiratory ward, mean d (SD)	1.74 (1.03)	1.74 (1.11)	−0.01 (−0.24 to 0.24)

Note. CI, confidence interval; SD, standard deviation.

[†] $P < .001$.

[‡] $P < .01$.

^aMeans were compared using a t test; proportions were compared using a χ^2 test.

^bIncludes 5 deaths over the study period.

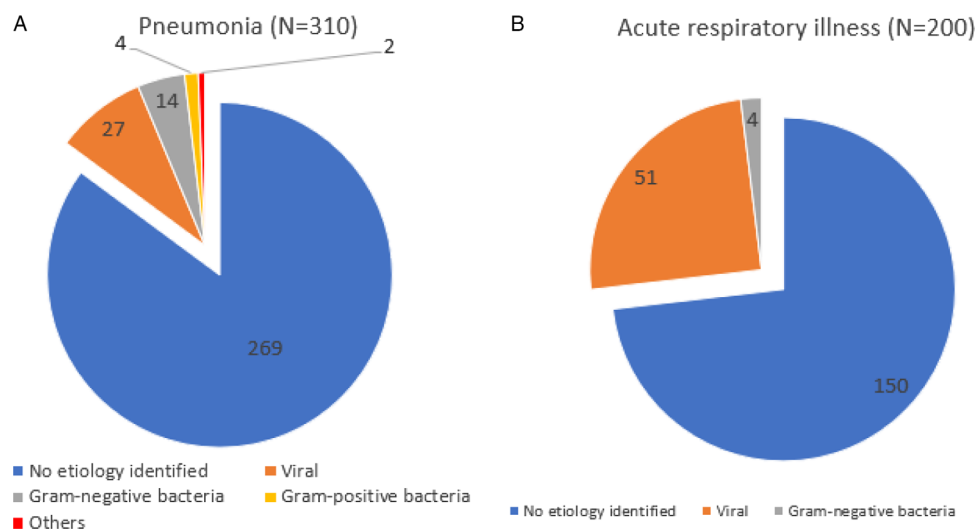


Fig. 2. Microbiologic etiology identified for patients with pneumonia/upper respiratory tract illness (URTI) admitted to general medicine respiratory surveillance wards in an acute tertiary hospital during a COVID-19 outbreak.

respiratory symptoms and submitted temperature measurements twice daily via our institution's electronic surveillance system. HCWs with contact not amounting to significant unprotected exposure were allowed to continue work but were placed on daily active phone surveillance by our hospital. If symptoms developed within 14 days from the date of exposure, the HCW was instructed to return to the staff clinic for further evaluation and SARS-CoV-2 testing. Among 126 exposed staff, 73 (57.9%) were subsequently tested for SARS-CoV-2 due to the development of symptoms after exposure; all were negative. In total, 13 inpatients were potentially exposed. Of these 13 exposed inpatients, 1 patient subsequently went on to develop COVID-19 after the exposure within the estimated incubation period.²² This constituted a cluster of COVID-19

cases with potential nosocomial transmission. In this case, staff had previously observed mingling between the mobile patients in the room, without compliance to surgical masks; subsequently, social distancing was reinforced, and advisories were posted in prominent areas to prevent mingling.¹⁸

Discussion

During an outbreak of SARS-CoV-2 with local transmission, an RSW to cohort all inpatients admitted from the community with respiratory symptoms may enhance case detection and reduce the potential of nosocomial transmission.²³ Despite the apparent low yield of testing in the RSW, our efforts were part of the national

strategy of containment of this novel pathogen at that juncture of the outbreak. Our institution drew on experience with SARS, in which exposed patients were triaged, quarantined, and cohorted in open-plan wards,²⁴ to conceptualize the RSW. This approach allowed high-risk COVID-19 suspects to be prioritized for management in limited isolation facilities while maintaining vigilance by managing potentially at-risk patients in designated zones to contain the risk of nosocomial transmission.

Aggressive case detection through screening of all patients presenting with acute respiratory infection has been advocated as a potential containment strategy.^{11,25} Our institution employed this strategy over a 6-week period, successfully containing a cluster of COVID-19 infection with potential nosocomial transmission and avoiding patient-HCW transmission amongst exposed staff. Although 5 previously unsuspected cases surfaced in the RSW over the 6-week period, only 13 patients were potentially exposed due to enhanced cohorting, whereas a single patient that surfaced in our institution's cohorted general ward resulted in the potential exposure of 18 patients.¹⁸ Given the importance of adequate PPE,²⁶ even a single case of COVID-19 can result in the quarantine of large numbers of HCWs if detected late, further straining hospital resources.²⁷

However, our study also reflects the practicality and costs of such a resource-intensive effort. Beds set aside for the RSW comprised almost 10% of our institution's bed capacity. Beds were freed up by reducing elective surgery; however, this method would not be sustainable in the long run. Almost two-fifths of patients entering the RSW were subsequently deemed not to have pneumonia or URTI, despite being originally triaged to these wards from the ED. This was unavoidable as during the outbreak our ED needed to quickly admit patients with suspected respiratory symptoms rather than risk potential exposure in the crowded ED. The requirement for 2 negative tests 24 hours apart reduced bed turnover, reflecting the cost of an aggressive containment strategy. Several strategies might have reduced resource utilization; however, they would have compromised case detection. For instance, reducing the number of negative COVID-19 tests from 2 to 1 would have reduced testing yield²⁰; the first COVID-19 case detected in our RSW would have been missed using such an approach. Focusing on febrile patients, as in SARS, was also a consideration.⁶ Only 40% of patients admitted to our RSW had fever (>37.9°C) at presentation to the ED. However, our first case did not present with fever and would have been missed using this strategy.

Our study has several limitations. In our hospital, PCR testing for SARS-CoV-2 was utilized as a diagnostic modality. However, given that the diagnostic yield would likely be dependent on the quality and type of respiratory tract sample, as with other coronaviruses,²⁸ COVID-19 cases may have been missed due to sampling issues. Additionally, emerging data suggest the possibility of transmission in presymptomatic patients.²⁹ Patients with atypical symptoms and presymptomatic patients could have been missed, similar to our institution's experience with SARS, in which the index patient in our institution presented in a surgical ward.³⁰ Although we did not screen all admissions for COVID-19 due to the logistical challenges involved, 115 patients tested for SARS-CoV-2 did not have symptoms on admission and 378 patients were deemed not to have a diagnosis of pneumonia or URTI on evaluation in the RSW; none of these patients tested positive. A risk-stratified approach of limiting testing to patients with respiratory symptoms on admission, as well as patients who developed respiratory symptoms within a pre-defined incubation period,²² might offer a

balanced approach to containing COVID-19 during an outbreak with community transmission. In our institution, recognizing the possibility that not all COVID-19 patients may be contained within the isolation ward or RSW, the usage of surgical masks in all clinical areas was made a mandatory minimum for all HCWs. Our results also reflect the experience of a healthcare institution in a COVID-19 outbreak during which the prevailing national strategy was one of containment¹³; exhaustive testing and surveillance may not be feasible in a healthcare system that is overwhelmed.¹⁰

In conclusion, the strategy of using an RSW was successful in containing patients with COVID-19 in designated areas where enhanced PPE and infrastructural enhancements could potentially reduce nosocomial transmission. A strategy of testing all admitted patients with pneumonia/URTI picked up unsuspected cases of COVID-19, allowing for rapid institution of measures to reduce potential onward transmission.

Acknowledgments. The authors acknowledge the unstinting efforts of our colleagues against COVID-19.

Financial support. No financial support was provided relevant to this article.

Conflicts of interest. All authors report no conflicts of interest relevant to this article.

References

- MacIntyre CR. On a knife's edge of a COVID-19 pandemic: is containment still possible? *Public Health Res Pract* 2020;30(1): pii: 3012000.
- Thompson RN. Novel coronavirus outbreak in Wuhan, China, 2020: intense surveillance is vital for preventing sustained transmission in new locations. *J Clin Med* 2020 Feb 11;9(2): pii: E498.
- Wang D, Hu B, Hu C, *et al*. Clinical characteristics of 138 hospitalized patients with 2019 novel coronavirus-infected pneumonia in Wuhan, China. *JAMA* 2020 Feb 7 [Epub ahead of print]. doi: [10.1001/jama.2020.1585](https://doi.org/10.1001/jama.2020.1585).
- Huang CL, Wang YM, Li XW, *et al*. Clinical features of patients infected with 2019 novel coronavirus in Wuhan, China. *Lancet* 2020 Jan 24 [Epub ahead of print]. doi: [10.1016/S0140-6736\(20\)30183-5](https://doi.org/10.1016/S0140-6736(20)30183-5).
- Hui DSC, Zumla A. Severe acute respiratory syndrome: historical, epidemiologic, and clinical features. *Infect Dis Clin North Am* 2019;33: 869–889.
- Ho PL, Tang XP, Seto WH. SARS: hospital infection control and admission strategies. *Respirology* 2003;8 suppl 1:S41–S45.
- Atabani SF, Wilson S, Overton-Lewis C, *et al*. Active screening and surveillance in the United Kingdom for Middle East respiratory syndrome coronavirus in returning travellers and pilgrims from the Middle East: a prospective descriptive study for the period 2013–2015. *Int J Infect Dis* 2016;47:10–14.
- Tawfiq JA, Meshish ZA. Infection control measures for the prevention of MERS coronavirus transmission in healthcare settings. *Expert Rev Antiinfect Ther* 2016;14:281–283.
- Guan WJ, Ni ZY, Hu Y, *et al*. Clinical characteristics of coronavirus disease 2019 in China. *N Engl J Med* 2020 Feb 28 [Epub ahead of print]. doi: [10.1056/NEJMoa2002032](https://doi.org/10.1056/NEJMoa2002032).
- McMichael TM, Clark S, Pogosjans S, *et al*. COVID-19 in a long-term care facility—King County, Washington, February 27–March 9, 2020. *Morb Mortal Wkly Rep* 2020 Mar 18 [Epub ahead of print]. doi: [http://dx.doi.org/10.15585/mmwr.mm6912e1](https://doi.org/10.15585/mmwr.mm6912e1).
- Klompas M. Coronavirus disease 2019 (COVID-19): protecting hospitals from the invisible. *Ann Intern Med* 2020 [Epub ahead of print]. doi: [10.7326/M20-0751](https://doi.org/10.7326/M20-0751).
- Lum LH, Tambyah PA. Outbreak of COVID-19—an urgent need for good science to silence our fears? *Singapore Med J* 2020 Feb 13 [Epub ahead of print]. doi: [10.11622/smedj.2020018](https://doi.org/10.11622/smedj.2020018).
- Wong JEL, Leo YS, Tan CC. COVID-19 in Singapore—current experience: critical global issues that require attention and action. *JAMA* 2020 Feb 20 [Epub ahead of print]. doi: [10.1001/jama.2020.2467](https://doi.org/10.1001/jama.2020.2467).

14. De Salazar PM, Niehus R, Taylor A, Buckee C, Lipsitch M. Using predicted imports of 2019-nCoV cases to determine locations that may not be identifying all imported cases. *bioRxiv* [Preprint]. doi: [10.1101/2020.02.04.20020495](https://doi.org/10.1101/2020.02.04.20020495). Published February 4, 2020.
15. Pung, R, Chiew CJ, Young BE, *et al.* Investigation of three clusters of COVID-19 in Singapore: implications for surveillance and response measures. *Lancet* 2020 [Epub ahead of print]. doi: [10.1016/S0140-6736\(20\)30528-6](https://doi.org/10.1016/S0140-6736(20)30528-6).
16. Zhang ZX, Yong Y, Tan WC, Shen L, Ng HS, Fong KY. Prognostic factors for mortality due to pneumonia among adults from different age groups in Singapore and mortality predictions based on PSI and CURB-65. *Singapore Med J* 2018;59:190–198.
17. Wee LE, Fua TP, Chua YY, *et al.* Containing COVID-19 in the emergency room: the role of improved case detection and segregation of suspect cases. *Acad Emerg Med* 2020 [Epub ahead of print]. doi: [10.1111/acem.13984](https://doi.org/10.1111/acem.13984).
18. Wee LE, Conceicao EP, Sim XYJ, *et al.* Minimising intrahospital transmission of COVID-19: the role of social distancing. *J Hosp Infect* 2020 [Epub ahead of print]. doi: [10.1016/j.jhin.2020.04.016](https://doi.org/10.1016/j.jhin.2020.04.016).
19. Tay JY, Lim PL, Marimuthu K, *et al.* De-isolating COVID-19 suspect cases: a continuing challenge. *Clin Infect Dis* 2020 Feb 26 [Epub ahead of print]. doi: [10.1093/cid/ciaa179](https://doi.org/10.1093/cid/ciaa179).
20. Lee TH, Lin RJ, Lin RTP, *et al.* Testing for SARS-CoV-2: can we stop at two? *Clin Infect Dis* 2020 [Epub ahead of print]. doi: [10.1093/cid/ciaa459](https://doi.org/10.1093/cid/ciaa459).
21. Wee LE, Sim XYJ, Conceicao EP, *et al.* Containment of COVID-19 cases amongst healthcare workers: the role of surveillance, early detection and outbreak management. *Infect Control Hosp Epidemiol* [Epub ahead of print]
22. Lauer SA, Grantz KH, Bi Q, *et al.* The incubation period of coronavirus Disease 2019 (COVID-19) from publicly reported confirmed cases: estimation and application. *Ann Intern Med* 2020 Mar 10 [Epub ahead of print]. doi: [10.7326/M20-0504](https://doi.org/10.7326/M20-0504).
23. Lloyd-Smith JO, Galvani AP, Getz WM. Curtailling transmission of severe acute respiratory syndrome within a community and its hospital. *Proc Biol Sci* 2003;270:1979–1989.
24. Tan YM, Chow PK, Tan BH, *et al.* Management of inpatients exposed to an outbreak of severe acute respiratory syndrome (SARS). *J Hosp Infect* 2004;58:210–215.
25. Fisher D, Wilder-Smith A. The global community needs to swiftly ramp up the response to contain COVID-19. *Lancet* 2020. [Epub ahead of print]. doi: [10.1016/S0140-6736\(20\)30679-6](https://doi.org/10.1016/S0140-6736(20)30679-6).
26. Wang J, Zhou M, Liu F. Exploring the reasons for healthcare workers infected with novel coronavirus disease 2019 (COVID-19) in China. *J Hosp Infect* 2020 [Epub ahead of print]. doi: [10.1016/j.jhin.2020.03.002](https://doi.org/10.1016/j.jhin.2020.03.002).
27. Ng KQ, Poon BH, Puar THK, *et al.* COVID-19 and the risk to healthcare workers: a case report. *Ann Intern Med* 2020 Mar 16 [Epub ahead of print]. doi: [10.7326/L20-0175](https://doi.org/10.7326/L20-0175).
28. Mackay IM, Arden KE. MERS coronavirus: diagnostics, epidemiology and transmission. *Virology* 2015;12:222–243.
29. Wei WE, Li Z, Chiew CJ, Yong SE, Toh MP, Lee VJ. Presymptomatic transmission of SARS-CoV-2—Singapore, January 23–March 16, 2020. *Morb Mortal Wkly Rep* 2020;69:411–415.
30. Gopalakrishna G, Choo P, Leo YS, *et al.* SARS transmission and hospital containment. *Emerg Infect Dis* 2004;10:395–400.