

# INFECTION CONTROL & HOSPITAL EPIDEMIOLOGY

VOLUME 30, NUMBER 1

JANUARY 2009

## SHEA EDITORIAL

1 **A Double-Edged Sword and a Golden Opportunity for Healthcare Epidemiology •**

Robert A. Weinstein, MD; David K. Henderson, MD

## ORIGINAL ARTICLES

4 **Prevalence of Colonization With Community-Associated Methicillin-Resistant *Staphylococcus aureus* Among End-Stage Renal Disease Patients and Healthcare Workers •**

Leonard B. Johnson, MD; Jinson Jose, MD; Farah Yousif, MD; Joan Pawlak, BS; Louis D. Saravolatz, MD

9 **Commentary: The Graying of Methicillin-Resistant *Staphylococcus aureus* •**

Kyle J. Popovich, MD; Robert A. Weinstein, MD

13 **Skin and Environmental Contamination With Vancomycin-Resistant Enterococci in Patients Receiving Oral Metronidazole or Oral Vancomycin Treatment for *Clostridium difficile*–Associated Disease •**

Ajay K. Sethi, PhD; Wafa N. Al-Nassir, MD; Michelle M. Nerandzic, BS; Curtis J. Donskey, MD

18 **Gastrointestinal Tract Colonization With Fluoroquinolone-Resistant *Escherichia coli* in Hospitalized Patients: Changes Over Time in Risk Factors for Resistance •**

Ebbing Lautenbach, MD, MPH, MSCE; Joshua P. Metlay, MD, PhD; Mark G. Weiner, MD; Warren B. Bilker, PhD; Pam Tolomeo, MPH; Xiangqun Mao, MD; Irving Nachamkin, DrPH, MPH; Neil O. Fishman, MD

25 **Outbreak of Multidrug-Resistant *Pseudomonas aeruginosa* Colonization and Infection Secondary to Imperfect Intensive Care Unit Room Design •**

Susy Hota, MD; Zahir Hirji, MHSc; Karen Stockton, MHSc; Camille Lemieux, MD, LLB; Helen Dedier, MLT; Gideon Wolfaardt, PhD; Michael A. Gardam, MD, MSc

34 **Nosocomial Outbreak of Infection With Multidrug-Resistant *Acinetobacter baumannii* in a Medical Center in Taiwan •**

Hui-Lan Chang, MS; Chih-Hsin Tang, PhD; Yuan-Man Hsu, PhD; Lei Wan, PhD; Ya-Fen Chang, MS; Chiung-Tsung Lin, MS; Yao-Ru Tseng, MS; Ying-Ju Lin, PhD; Jim Jinn-Chyuan Sheu, PhD; Cheng-Wen Lin, PhD; Yun-Chieh Chang, PhD; Mao-Wang Ho, MD; Chia-Der Lin, MD; Cheng-Mao Ho, MD; Chih-Ho Lai, PhD

39 **Incidence Rate and Variable Cost of Nosocomial Infections in Different Types of Intensive Care Units •**

Yin-Yin Chen, RN, PhD; Fu-Der Wang, MD; Cheng-Yi Liu, MD; Pesus Chou, DrPH

47 **Personal Healthcare Worker (HCW) and Work-Site Characteristics That Affect HCWs' Use of Respiratory-Infection Control Measures in Ambulatory Healthcare Settings •**

Wayne Turnberg, PhD, MSPH; William Daniell, MD, MPH; Terri Simpson, PhD, RN; Jude Van Buren, DrPH, MPH, RN; Noah Seixas, PhD; Edward Lipkin, MD, PhD; Jeffery Duchin, MD

53 **Study of Blood Contact in Simulated Surgical Needlestick Injuries With Single or Double Latex Gloving •**

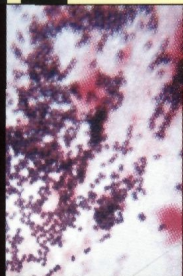
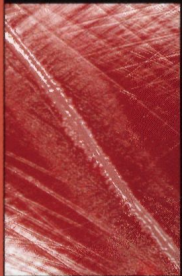
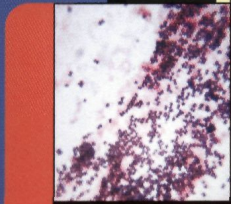
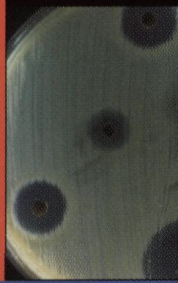
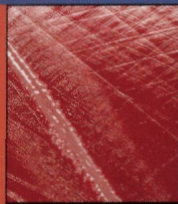
Andreas Wittmann, PhD; Nenad Kralj, MD, MScD; Jan Köver, BA; Klaus Gasthaus, Dipl Phys; Friedrich Hofmann PhD, MD, MScD

CONTENTS CONTINUED INSIDE



THE OFFICIAL JOURNAL OF THE SOCIETY FOR HEALTHCARE EPIDEMIOLOGY OF AMERICA





Infection prevention and control in healthcare settings is a critical public health problem rapidly gaining interest.

**Are you current with the latest trends and evidence?**

**Join SHEA Today!**

Stay on top of emerging science and evidence-based strategies to prevent and control infections and to improve quality-of-care in your healthcare facility.

SHEA supports members' efforts to improve patient care and healthcare worker safety through:

- Research
- Education & Training
- Policy Development
- Evidence-based Practical Guidelines
- Mentorship and Professional Development

**Application Details**

[www.shea-online.org](http://www.shea-online.org)

[info@shea-online.org](mailto:info@shea-online.org)

(703) 684-1006

Annual membership offers:

- Subscription and online access to *Infection Control and Hospital Epidemiology (ICHE)*, the official journal of SHEA
- Epidemiology News and e-newsletter
- Discounted registration on SHEA educational programming
- Online member network and job board



*The Society for Healthcare Epidemiology of America*



# INFECTION CONTROL & HOSPITAL EPIDEMIOLOGY

VOLUME 30, NUMBER 1

JANUARY 2009

CONTENTS CONTINUED FROM COVER

## REVIEW ARTICLE

- 57 **Review of Current Literature on the Economic Burden of *Clostridium difficile* Infection** • Erik R. Dubberke, MD; Albert I. Wertheimer, PhD, MBA

## COMMENTARIES

- 67 **Zero: What Is It, and How Do We Get There?** • Victoria Fraser, MD
- 71 **Getting to Zero: An Emerging Policy Framework for the Elimination of Hospital-Associated Infections** • Chesley Richards, MD, MPH
- 74 **Getting to Zero: Is It Safe?** • Michael B. Edmond, MD, MPH, MPA

## CONCISE COMMUNICATIONS

- 77 **Randomized Controlled Trial of the Effectiveness of Chlorhexidine Showers Before Elective Plastic Surgical Procedures** • Daniela Francescato Veiga, MD, PhD; Carlos Américo Veiga Damasceno, PhD; Joel Veiga-Filho, MD; Ricardo Góes Figueiras, MD; Roberto Bezerra Vieira, MD; Edgard Silva Garcia, MD; Virginia Vilasboas Silva; Neil Ferreira Novo, PhD; Lydia Masako Ferreira, MD, PhD
- 80 **Active Tuberculosis in a Healthcare Worker: Are You Ready?** • Thomas G. Fraser, MD; Joan Kowalczyk, BSN; Steven Schmitt, MD; Jill Bernstein, MSN, CRNP; Paul Terpeluk, DO; J. Walton Tomford, MD; Steven M. Gordon, MD
- 83 **The Crucial Role of Catheters in Micrococcal Bloodstream Infections in Cancer Patients** • Elizabeth Rocio Ramos, MD; Ray Hachem, MD; Souad Youssef, MD; Xiang Fang; Ying Jiang; Issam Raad, MD
- 86 **Clinical Trial of Standing-Orders Strategies to Increase the Inpatient Influenza Vaccination Rate** • William E. Trick, MD; Krishna Das, MD; Mary N. Gerard, MD; Marjorie Charles-Damte, RN; Gregory Murphy, RN; Irene Benson, APN-CNS; Julia Y. Morita, MD
- 89 **Methicillin-Resistant *Staphylococcus aureus* Bacteremia in Patients With End-Stage Renal Disease in Taiwan: Distinguishing Between Community-Associated and Healthcare-Associated Strains** • Chung-Chih Lin, MD; Jiun-Ling Wang, MD; Chi-Ying Lin, MD; Shey-Ying Chen, MD; Jann-Tay Wang, MD; Kwan-Dun Wu, MD, PhD; Shan-Chwen Chang, MD, PhD

## RESEARCH BRIEFS

- 93 **Nasal Carriage of Methicillin-Resistant *Staphylococcus aureus* Among Patients With End-Stage Renal Disease** • Cheng-Yi Wang, MD; Vin-Cent Wu, MD; Yung-Ming Chen, MD, PhD; Chi-Ting Su, MD; Kwan-Dun Wu, MD, PhD; Po-Ren Hsueh, MD
- 95 **Methicillin-Resistant *Staphylococcus aureus* Throat Colonization Among Healthcare Workers During an Outbreak in Singapore General Hospital** • Kian Sing Chan, MBBS; Moi Lin Ling, MBBS, FRCPA, CPHQ; Li Yang Hsu, MBBS, MPH; Ai Ling Tan, MBBS, FRCPA

CONTENTS CONTINUED ON NEXT PAGE

# INFECTION CONTROL & HOSPITAL EPIDEMIOLOGY

VOLUME 30, NUMBER 1

JANUARY 2009

CONTENTS CONTINUED FROM PREVIOUS PAGE

- 97 **Results of Survey on Implementation of Infectious Diseases Society of America and Society for Healthcare Epidemiology of America Guidelines for Developing an Institutional Program to Enhance Antimicrobial Stewardship** • Scott D. Pope, PharmD; Timothy H. Dellit, MD; Robert C. Owens, PharmD; Thomas M. Hooton, MD
- 98 **Septic Platelet-Transfusion Reactions Due to Methicillin-Susceptible *Staphylococcus aureus*** • Michelle A. Barron, MD; Phyllis A. Woods, MT; Gail Campbell, BS; Nancy E. Madinger, MD

## LETTERS TO THE EDITOR

- 101 **Prevention of Ventilator-Associated Pneumonia by Use of Oral Chlorhexidine** • Luciano Silvestri, MD; Hendrick K. F. van Saene, MD, PhD, FRCPath; Marco Milanese, MD; Eraldo Zei, RN; Miranda Blazic, RN
- 102 **Reply to Silvestri et al.** • Visanu Thamlikitkul, MD; Hutsaya Tantipong, MD; Chantana Morkchareonpong, MD; Songyod Jaiyindee, MD
- 103 **Should We Screen Patients for Extended-Spectrum  $\beta$ -Lactamase-Producing Enterobacteriaceae in Intensive Care Units?** • Elisabeth Meyer, MD; Annerose Serr, MD; Christian Schneider, MD; Stefan Utzolino, MD; Winfried V. Kern, MD, PhD; Regina Scholz; Markus Dettenkofer, MD, PhD
- 105 **Infectious Complications After Reimplantation of Bone Flaps in Patients Who Underwent Decompressive Craniectomy** • Sebastian Schulz-Stübner, MD; Rolf Rossaint, MD, PhD; Markus Dettenkofer, MD, PhD; Ruth Thiex, MD, PhD

## ERRATUM

- 107 **Hidron et al. (2008; 29:996-1011)**

*An Official Publication of the Society for Healthcare Epidemiology of America*

**EDITOR**

Suzanne F. Bradley, MD • Ann Arbor, MI

**DEPUTY EDITOR**

Carol A. Kauffman, MD • Ann Arbor, MI

**SENIOR ASSOCIATE EDITORS**

C. Glen Mayhall, MD • Galveston, TX  
Gina Pugliese, RN, MS • Chicago, IL  
William Schaffner, MD • Nashville, TN

**ASSOCIATE EDITORS**

Ebbing Lautenbach, MD, MPH • Philadelphia, PA  
Preeti N. Malani, MD, MSJ • Ann Arbor, MI  
David Weber, MD, MPH • Chapel Hill, NC

**STATISTICS CONSULTANT**

Rodney L. Dunn, MS • Ann Arbor, MI

**SECTION EDITOR FOR GUIDELINES,  
POSITION PAPERS, AND INVITED REVIEWS**

Carol Chenoweth, MD • Ann Arbor, MI

**MANAGING EDITOR**

Gordon Rudy, PhD, ELS • Chicago, IL

**PAST EDITORS**

*Infection Control*

Richard P. Wenzel, MD, 1980–1990 (vols. 1–11)

*Infection Control and Hospital Epidemiology*

Richard P. Wenzel, MD, 1991–1992 (vols. 12 and 13)

Michael D. Decker, MD, 1993–2001 (vols. 14–22)

Barry M. Farr, MD, 2002–2004 (vols. 23–25)

William R. Jarvis, MD, 2005–2006 (vols. 26 and 27)

**EDITORIAL ADVISORY BOARD**

Miriam Alter, PhD, MD • Atlanta, GA  
Anucha Apisarnthanarak, MD • Pratumthani, Thailand  
Lennox Archibald, MD, FRCP • Alachua, FL  
Hilary Babcock, MD • St. Louis, MO  
Elise M. Beltrami, MD, MPH • Decatur, GA  
David Birnbaum, PhD, MPH • Sidney, BC  
Christian Brun-Buisson, MD • Creteil, France  
John P. Burke, MD • Salt Lake City, UT  
David P. Calfee, MD, MS • New York, NY  
Yehuda Carmeli, MD, MPH • Tel Aviv, Israel  
Sara E. Cosgrove, MD, MS • Baltimore, MD  
Donald E. Craven, MD • Burlington, MA  
Burke A. Cunha, MD • Mineola, NY  
Erika D'Agata, MD, MPH • Boston, MA  
Patch Dellinger, MD • Seattle, WA  
Daniel Diekema, MD • Iowa City, IA  
Charles E. Edmiston, Jr., PhD • Milwaukee, WI  
Theodore C. Eickhoff, MD • Denver, CO  
Martin S. Favero, PhD • Irvine, CA  
Jon P. Furuno, PhD • Baltimore, MD  
Richard A. Garibaldi, MD • Farmington, CT  
Petra Gastmeier, MD • Hanover, Germany  
Dale N. Gerding, MD • Hines, IL  
Donald A. Goldmann, MD • Boston, MA  
Donna Haiduvan, RN, PhD, CIC • Tampa, FL  
Anthony D. Harris, MD, MPH • Baltimore, MD  
David K. Henderson, MD • Bethesda, MD  
Loreen A. Herwaldt, MD • Iowa City, IA  
Peter N. R. Heselstine, MD • San Juan, CA  
Karen Hoffmann, RN, CIC, MS • Chapel Hill, NC  
Janine Jagger, MPH, PhD • Charlottesville, VA  
John A. Jernigan, MD, MS • Atlanta, GA  
James T. Lee, MD, PhD • St. Paul, MN  
L. Clifford McDonald, MD • Atlanta, GA

Allison McGeer, MD • Toronto, ON  
Leonard A. Mermel, DO, ScM • Providence, RI  
Robert R. Muder, MD • Pittsburgh, PA  
Carlene A. Muto, MD, MS • Pittsburgh, PA  
Joseph M. Mylotte, MD, CIC • Buffalo, NY  
David L. Paterson, MBBS, FRACP • Pittsburgh, PA  
Jan Evans Patterson, MD • San Antonio, TX  
Sindy M. Paul, MD • Yardley, PA  
David A. Pegues, MD • Los Angeles, CA  
Eli Perencevich, MD, MS • Baltimore, MD  
Michael A. Pfaller, MD • Iowa City, IA  
Didier Pittet, MD, MS • Geneva, Switzerland  
Gina Pugliese, RN, MS • Chicago, IL  
Isaam Raad, MD • Houston, TX  
Jordi Rello, MD, PhD • Tarragona, Spain  
Manfred L. Rotter, MD, DipBact • Vienna, Austria  
Henning Rüden, MD • Berlin, Germany  
William A. Rutala, PhD, MPH • Chapel Hill, NC  
Lisa Saiman, MD, MPH • New York, NY  
Sanjay Saint, MD, MPH • Ann Arbor, MI  
William E. Scheckler, MD • Madison, WI  
Lynne M. Schulster, PhD • Atlanta, GA  
John A. Sellick, DO • Amherst, NY  
Kent Sepkowitz, MD • New York, NY  
Samir Shah, MD, MSCE • Philadelphia, PA  
Andrew E. Simor, MD • Toronto, ON  
Philip W. Smith, MD • Omaha, NE  
Denis W. Spelman, MD • Prahan, Victoria, Australia  
Jeffrey R. Starke, MD • Houston, TX  
Janet E. Stout, PhD • Pittsburgh, PA  
Clyde Thornsberrry, PhD • Franklin, TN  
William Trick, MD • Chicago, IL  
Antoni Trilla, MD, PhD • Barcelona, Spain  
Robert A. Weinstein, MD • Chicago, IL  
Andreas Widmer, MD, MS • Basel, Switzerland  
Marcus Zervos, MD • Royal Oak, MI

*Infection Control and Hospital Epidemiology* (ISSN 0899-823X) is published monthly by the University of Chicago Press, 1427 E. 60th St., Chicago, IL 60637-2954 (<http://www.journals.uchicago.edu/ICHE/>). The editorial office is in Chicago, Illinois.

**Editorial Office**

Communications should be addressed to the Editor, *Infection Control and Hospital Epidemiology*, 1427 E. 60th St., Chicago, IL 60637-2954; (e-mail: [iche@press.uchicago.edu](mailto:iche@press.uchicago.edu); telephone: 773-702-2448, fax: 773-753-4247). Contributors should consult the Information for Authors, which is available at the journal's Web site.

**Advertising**

Please direct advertising inquiries to Journals Advertising, University of Chicago Press, 1427 E. 60th St., Chicago, IL 60637 (e-mail: [cbarhany@press.uchicago.edu](mailto:cbarhany@press.uchicago.edu); telephone: 773-702-8187; fax: 773-702-0172). Publication of an advertisement in *Infection Control and Hospital Epidemiology* does not imply endorsement of its claims by the Society for Healthcare Epidemiology of America, by the Editor, or by the University of Chicago. Correspondence regarding advertising should be addressed to the advertising office in Chicago.

**Permissions**

Articles may be copied or otherwise reused without permission only to the extent permitted by Sections 107 and 108 of the US Copyright Law. Permission to copy articles for personal, internal, classroom, or library use may be obtained from the Copyright Clearance Center (<http://www.copyright.com>). For all other uses, such as copying for general distribution,

for advertising or promotional purposes, for creating new collective works, or for resale, please contact the Permissions Coordinator, Journals Division, University of Chicago Press, 1427 E. 60th St., Chicago, IL 60637 (e-mail: [journalpermissions@press.uchicago.edu](mailto:journalpermissions@press.uchicago.edu); fax: 773-834-3489). Articles in the public domain may be used without permission, but it is customary to contact the author.

**Subscriptions**

Subscription rates for 2009 are \$171 for individuals and \$401 for institutions. Additional rates for non-US subscribers and reduced rates for fellows, residents, and students are available at <http://www.journals.uchicago.edu/ICHE>. Subscription agent for Japan: Kinokuniya Company, Ltd. Individuals have the option to order directly from the University of Chicago Press. Single copy rates: individuals \$18; institutions \$40.

Please direct subscription inquiries, requests for back issues, and address changes to Journals Division, University of Chicago Press, P.O. Box 37005, Chicago, IL 60637 (e-mail: [subscriptions@press.uchicago.edu](mailto:subscriptions@press.uchicago.edu); telephone: 773-753-3347 or toll-free in the United States and Canada 877-705-1878; fax: 773-753-0811 or toll-free 877-705-1879).

**Postmaster:** Send address changes to *Infection Control and Hospital Epidemiology*, University of Chicago Press, P.O. Box 37005, Chicago, IL 60637-2954.

Periodicals postage paid at Chicago, Illinois, and at an additional mailing office.

Published by the University of Chicago Press, Chicago, Illinois. © 2008 by the Society for Healthcare Epidemiology of America. All rights reserved. This publication is printed on acid-free paper.





# INFECTION CONTROL & HOSPITAL EPIDEMIOLOGY

Keep current with the accelerating pace of infectious disease in clinical care facilities and how to improve upon that care. Order reprints in full color or black and white on high quality paper stock. Customize your reprint order with typesetting, logos, and covers.

Contact: Reprint Coordinator  
[reprints@press.uchicago.edu](mailto:reprints@press.uchicago.edu)  
773 702 7677 Voice  
773 702 0694 Fax



THE UNIVERSITY  
OF CHICAGO PRESS  
JOURNALS DIVISION  
[www.journals.uchicago.edu](http://www.journals.uchicago.edu)

# REPRINTS