

## Ex-Situ "Auto Lift" Technique for TEM Sample Preparation

Garth "Brian" Cook

Micro Optics of Florida, Inc.

GarthBC@AOL.Com

*"The most advantageous feature of the ex-situ lift out method is throughput."*(1)

A great deal of emphasis is placed on "throughput" in the microprocessor industry. Wafer sizes are getting larger and the costs of building them have increased astronomically. The transmission electron microscope (TEM) has become the essential tool for examining current microprocessor products. The TEM can only be effective if it has properly prepared specimens to put into it. In order to achieve the highest specimen preparation spatial resolution, the microprocessor industry has turned to focused ion beam (FIB) tools, either single or dual column, for TEM specimen preparation in applications ranging from process control to failure analysis, and on to semiconductor device metrology. With the use of these tools, the birth of the ex-situ lift out (EXLO) FIB specimen preparation method became an important technique for delivering thin, site-specific specimens to a TEM grid, and ultimately to the TEM for analysis. As the quotation says the rapid EXLO method is the most advantageous for its throughput.

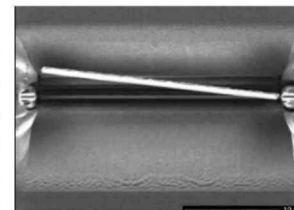
In addition to throughput advantages, the EXLO technique is done outside the FIB. It is a stand-alone tool set that is generally situated near the FIB. A single EXLO set-up can service several FIB tools and increases throughput, and saves expensive FIB time, by taking the specimen retrieval and grid mounting operation out of the FIB tool and performing it "ex-situ."

In this article we discuss how we have increased the EXLO method throughput significantly via the automation of our stages and the use of a programmable nanomanipulator that controls the thin glass tips that retrieve the thin membranes by electrostatic attraction in the FIB-processed site on the target wafer.

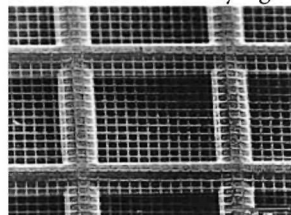


Some FIB tools are able to accommodate an entire wafer and creating a number of TEM membranes ready to be picked up and mounted on grids. In some cases this FIB multiple specimen preparation capability can be performed using automation packages that come with the FIB. Once the thinning is done and the membranes are cut free (See inset on right, below), the wafer can

be removed from the FIB and placed on the EXLO system stage. The programmable EXLO stage can traverse about on the wafer and pick up the thin samples. This in itself speeds the process up considerably. Remember "time is money" and looking for the prepared sites can be tedious and time consuming. Using the automated nanomanipulator, the EXLO glass tip can be put into lift-out position over the prepared specimen without the intervention of an operator.



Once the tip has traversed to the prepared site and is in the "ready position," the sample can be lifted out and placed on a TEM grid. The motorized stages have a special location where the TEM grids are placed ready to receive the specimen. The nanomanipulator glass tip, carrying the specimen, can be programmed to move to this location for laying the specimen on the pre-positioned grid.



The grid position location can be rotated to give the operator the ability to place several samples on one grid. This saves time and allows for TEM inspection of several samples in one TEM session. The TEM grids used are a 400 mesh carbon or formvar

coated grids. The new Quantifoil grids (See adjacent inset) do not have a carbon or formvar film over the grid holes. The samples are suspended over the small grid holes, which is more desirable for getting maximum image resolution in the TEM.

Key elements of the EXLO system include an automated microscope with an extra long working distance (19mm) and an auto zoom feature that extends the magnification range from 75x to 3200x, the precision motorized stage with a software controlled interface, and the auto-nanomanipulator.

In conclusion the new "Auto Lift" EXLO method increases throughput significantly compared to in-situ units. There is simply no faster method than the "Auto Lift." In many cases, the target wafer is minimally disturbed and may often be put back into the production facility for further processing. ■

### Reference:

- (1) L.A. Giannuzzi et al., "FIB Lift-Out Specimen Preparation Techniques", in Introduction to Focused Ion Beams: Instrumentation, Theory, Techniques, and Practice, L.A. Giannuzzi, F.A. Stevie (eds), Springer-Verlag New York, 201 (2004).

Only from

# MICRO STAR

## DIAMOND KNIVES



UNMATCHED  
1  
QUALITY



ONE YEAR  
1  
GUARANTEE

*Flawless quality  
proven with a  
year guarantee.*

FULL PRICES AND INFORMATION AT [WWW.MICROSTARTECH.COM](http://WWW.MICROSTARTECH.COM)  
TEL 800 533 2509 FAX 409 294 9861 E-MAIL [MISTAR@MSN.COM](mailto:MISTAR@MSN.COM)

# The Leaders in Lift Out Technology

Now selling 5<sup>th</sup> Generation Ex-Situ Systems

**INTRODUCING THE WORLDS FIRST AUTOMATED EX-SITU LIFT OUT SYSTEM**

## “THE AUTO LIFT”

The new “Auto Lift” is unmatched in maximizing TEM Sample throughput. No other instrument or technique is faster when working with a FIB. Great for Clean Room Environments!

*The Ex-Situ Method by Micro Optics of Florida, Inc.*

- The “Original” Lift Out Technique
- The New “Auto Lift” for high throughput. (Easy Upgrade for Existing Customers)
- Allows your FIB to do what it does best: Make TEM Samples
- Proven, Fast, Easy Technology Over 100 sold worldwide
- Success Rate is 95%
- Cost Effective Systems including: The New “Auto Lift”, Standard One and Two Manipulator systems, and a University model



Micro Optics of Florida, Inc.  
(800) 545-3996  
info@microopticsfl.com

## Why have 1,000 scientists in 25 countries selected Minus K® vibration isolators?

Because Minus K vibration isolation systems deliver 10x to 100x better performance than high-performance air systems, without air, and for air table prices.

Visit [www.minusk.com](http://www.minusk.com) for more information...



Without Minus K



With Minus K

VIBRATION ISOLATION BY:  
**minus k**® TECHNOLOGY

420 S. Hindry Ave., Unit E • Inglewood, CA 90301 USA  
Phone: 310-348-9656 • Fax: 310-348-9638  
sales@minusk.com • www.minusk.com

**MBL** Biological Discovery in Woods Hole

Founded in 1888 as the Marine Biological Laboratory

## 2006 Microscopy Courses

### ANALYTICAL & QUANTITATIVE LIGHT MICROSCOPY

May 4 - May 12, 2006

Application Deadline: January 26, 2006

This comprehensive course provides an in-depth examination of the theory of image formation and the application of video methods for exploring subtle interactions between light and the specimen.

### OPTICAL MICROSCOPY & IMAGING IN THE BIOMEDICAL SCIENCES

October 10 - October 19, 2006

Application Deadline: June 30, 2006

This course will enable the participant to obtain and interpret microscope images of high quality to perform quantitative optical measurements and to produce video and digital records for documentation and analysis.

For further information and applications, visit our website:

[www.mbl.edu/education](http://www.mbl.edu/education)

or contact: Admissions Coordinator  
admissions@mbl.edu, (508)289-7401

Women and minorities encouraged to apply.  
The MBL is an EEO/Affirmative Action Institution.