

BJPsych
Bulletin

EDITORIAL

- 233 Evolutionary psychiatry: a new College special interest group
Riadh Abed, Paul St John-Smith

ORIGINAL PAPERS

- 237 Screening for depression in primary care: a Rasch analysis of the PHQ-9
Mike Horton, Amanda E. Perry
- 243 The application of Rasch measurement theory to psychiatric clinical outcomes research. Commentary on . . . Screening for depression in primary care
Skye P. Barbic, Stefan J. Cano
- 245 Compliance of community teams with specialist service recommendations for obsessive-compulsive and body dysmorphic disorders
Paul M. Harris, Lynne M. Drummond
- 249 Psychiatrists' follow-up of identified metabolic risk: a mixed-method analysis of outcomes and influences on practice
Sue Patterson, Kathleen Freshwater, Nicole Goulter, Julie Ewing, Boyd Leamon, Anand Choudhary, Vikas Moudgil, Brett Emmerson
- 255 Medical comorbidity and projected survival in patients admitted to a specialist addictions in-patient unit
Daniel V. Mogford, Rebecca J. Lawrence

REVIEW ARTICLES

- 261 An acute in-patient psychiatric service for 16- to 17-year-old adolescents in the UK: a descriptive evaluation
Venu Duddu, Abdulhakim Rhouma, Masood Qureshi, Imran Bashir Chaudhry, Terry Drake, Altaf Sumra, Nusrat Husain
- 266 Women in acute psychiatric units, their characteristics and needs: a review
Michaela Archer, Yasmine Lau, Faisal Sethi

SPECIAL ARTICLES

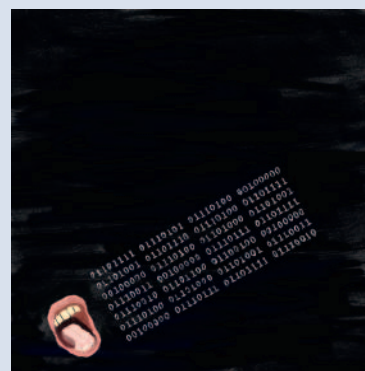
- 273 Narratives of experience of mental health and illness on healthtalk.org
Jo Kidd, Sue Ziebland
- 277 Digitally enabled patients, professionals and providers: making the case for an electronic health record in mental health services
Jonathan Richardson, Joe McDonald

EDUCATION & TRAINING

- 281 The Foundation Programme in psychiatry: a qualitative study into the effects of a foundation placement
Ann Boyle, Sophie Davies, Nisha Dogra, Jennifer Perry, Hannah Fosker

COLUMNS

- 285 Correspondence
- 286 Correction
- 286 Obituaries
Ian Reid
Sabina Strich

**Cover image**

In this issue, Richardson & McDonald (pp. 277-280) examine the case for using electronic health records within mental health services. While there is some evidence of benefits, more work needs to be done on the potential impact on patients, professionals and service providers.

Image (inspired by Samuel Beckett's *Not I*) © Guy Undrill 2016.