

# JOURNAL OF MENTAL SCIENCE.

Asylum Reports have been received for 1917-18 from those marked with an asterisk

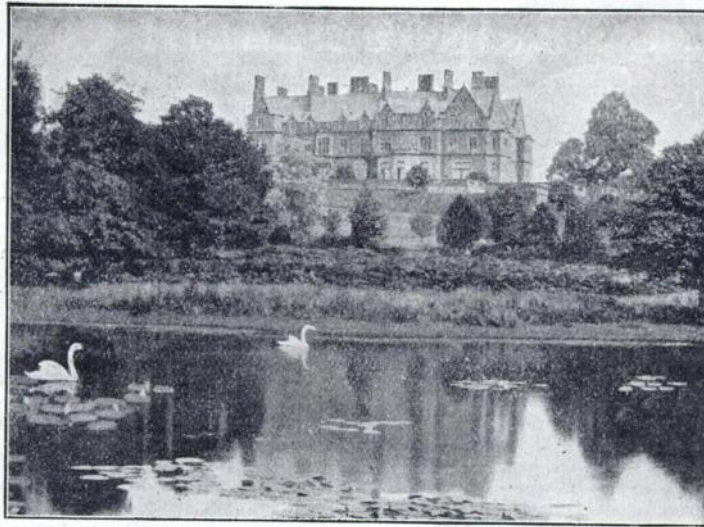
<i>English and Welsh County.</i>	Norfolk.	Leicester.	Edinburgh.*
Beds.	Northampton.	Middlesborough.*	Fife and Kinross.*
Berks.	Northumberland.	Newcastle.	Glasgow:
Bucks.*	Nottingham.	Norwich.	District.
Cambridge.	Oxford.	Nottingham.	Royal.*
Carmarthen.*	Salop.*	Plymouth.	Woodilee.
Chester.	Somerset:	Portsmouth.	Govan.
Chester (Parkside).	Taunton.	Sunderland.	Inverness.*
Chichester.	Wells.	West Ham.	Kirklands.
Cornwall.	Stafford:		Lanark.
Cumberland and	Burntwood.	<i>Hospitals.</i>	Midlothian.
Westmorland.	Cheddleton.	Albert.	Montrose.
Denbigh.	Stafford.	Barnwood.*	Murthly.
Derby.	Suffolk.	Bethlem.	Perth.
Devon.	Surrey:	Bootham.	Roxburgh (Dis-
Dorset.	Brookwood.	Broadmoor.	trict).*
Durham.	Netherne.	City of London.	Stirling.
Essex:	Sussex:	Coton Hill.	
Brentwood.	Chichester.	Earlwood.	<i>Ireland.</i>
Colchester.	East.	Lincoln.	Armagh.
Glamorgan.*	Warwick.	Manchester.	Ballinasloe.*
Gloucester.	Wilts (Kesteven).*	<i>Metropolitan Asy-</i>	Belfast.
Hants.*	Worcester:	<i>lums Board.</i>	Carlow.
Isle of Man.	Barnsley Hall.	St. Andrew's.	Castlebar.
Isle of Wight.	Powick.*	St. Ann's Coppice.	Clonmel.
Hereford.	Yorkshire:	St. Luke's.	Cork.
Hertford.*	Beverley.	Rampton.	Downpatrick.*
Kent.*	Clifton.	Royal Eastern	Ennis.
Lancashire:	Menstone.	Counties Institu-	Enniscorthy.*
Lancaster.	Storches Hall.	tion for Idiots	Farnham.
Rainhill.	Wadsley.	(Colchester).*	Kilkenny.
Prestwich.	Wakefield.*	The Retreat	Killarney.
Whittingham.	<i>Borough.</i>	(York).	Letterkenny.
Winwick.	Birmingham:	Warnesford.	Limerick.
Leicester.	Rubery Hill.	Wonford.	Londonderry.
Lincoln:	Winson Green.		Maryborough.
Bracebridge.	Bristol.	<i>Scotland.</i>	Monaghan.
Kesteven.	Canterbury.	Aberdeen (King-	Mullingar.
The Lawn.*	Cardiff.	seat).*	Omagh.
London City.	Derby.	Argyll and Bute.	Palmerston.
London County.	Exeter.	Ayr.*	Richmond.
Middlesex.	Haywards Heath.	Baldovan.	St. Patrick's.
Monmouth.*	Hull.	Barony.	Sligo.
	Ipswich.	Dumfries.	Waterford.
		Dundee.	

The following Asylum Reports have also come to hand:

Agra and Oudh.	Grahamstown.	Montreal.*	Punjab.
Albany.	Harrisburgs.	New Brunswick.	Protestant Hospital
Alt Scherbitz.	Hudson River.	New Hampshire.	for the Insane.*
Annual Report of	Illinois West.	New South	Rangoon.
the Massachu-	Indiana East.	Wales.	Rochester.
setts School for	Iowa.	New York.*	Sheppard and
the Feebleminded	Jamaica.	Northampton.	Pratt Hospital,
at Waltham.	Kalanazoo State	North-Western	Baltimore.
Assam.	Hosp., Michigan.	Provinces.	South Australia.
Bengal.	Lebanon.*	Nova Scotia.	South Mountain.
Binghampton.	Long Island.	Pennsylvania.	Straits Settle-
Bombay.	Long View.	Ohio.	ments.
Buffalo.	Lower Austria.	Ontario.	Tarrytown.
Butler.*	Madras.	Pennsylvania.	Taunton.
Cape of Good Hope.	Manhattan.	Pennsylvania Hos-	Tezpur.
Carolina N.	Massachusetts Bd.	pital.	Utica.
Carthage.	Massachusetts	Pennsylvania,	Verdun.*
Central Provinces.	Hospital.	Norristown,	Victoria.
Cleveland.	Maryland.	Aarhus.	Virginia Central.
Connecticut.	Matteawan.	Pennsylvania West.	Virginia West.
Dakota N.	Michigan East.	Philadelphia	Warren.
Danville.	Mississippi.	Friends.	Willard.
Egypt.	Missouri.	Pretoria.	Washington.

## BOREATTON PARK.

Founded by the late W. H. O. SANKEY, M.D., F.R.C.P., for the reception of a limited number of ladies and gentlemen mentally afflicted, and now conducted on the same lines by his son, E. H. O. SANKEY, M.A., M.B., B.C.Cantab.



The house, a first-class country Mansion, specially adapted for its purpose, stands about 400 ft. above the sea and commands magnificent views of Welsh mountain scenery.

The Gardens slope to the West, and lead to the Deer Park, one of the oldest in the kingdom.

There is fishing both for trout and coarse fish in the pools in the Deer Park, and the right of fishing in about 5 miles of the River Perry is leased.

There are Hot Houses and Orchard House.

Private Golf Course of 18 holes, Tennis Courts, and Croquet Lawns.

So far as possible the patients of both sexes take their meals and associate at all times with the family of the Superintendent, the object being to make the house as much as possible like an ordinary country house.

Arrangements can be made for friends of the Patients to reside in the house should they desire to do so.

There is good stable accommodation, and Horses, Carriages and Motor are provided.

For further particulars apply:--

**Dr. SANKEY, Boreatton Park, Baschurch, Salop.**

TRADE MARK  
A.D. 1715.

Trade **Bynogen** Mark

BRINGS HEALTH

**An Easily Digested Nerve Food Rich in Phosphorus**

**Composition.**  
"Bynogen" is a combination of pure Milk Protein, 75 per cent.; a specially prepared soluble extract obtained from selected whole wheat and malt, 20 per cent.; with 2 per cent. each of the Glycerophosphates of Soda and Lime and 1 per cent. of Glycerophosphate of Magnesia.

**Indications for Use.**  
"Bynogen" is indicated in all Enfeebled conditions, in Convalescence after severe illness, Mental and Nervous Exhaustion, etc.

**A Concentrated Nutrient and Restorative**

**Therapeutic Advantages.**  
The percentage of nitrogen is high. The carbohydrate is in the most easily assimilable form. The mixed glycerophosphates present the inorganic bases common in foodstuffs and do not cause constipation. "Bynogen" strengthens digestion and improves nutrition.

**Physical Advantages.**  
"Bynogen" possesses a most attractive flavour and mixes readily with milk and other fluids.

**PRICES:**  
In bottles at 1/9, 3/-, 5/- and 9/- each.

Allen & Hanburys Ltd., Lombard St., London.

### "Bynogen" Tablets

In tins containing 32 Tablets, 1/6 each (retail).

"Bynogen" Tablets present in a palatable and convenient form the full nutritive properties of "Bynogen"—the tonic nerve food.

"Bynogen" Tablets are especially serviceable for use by Travellers, Sailors, Soldiers, Aviators and all those who desire a concentrated nerve food.

# **BORDERLAND PATIENTS.**

---

## **SOUTH BEACON**

**Hadlow Down,  
Nr. Uckfield, Sussex.**

---

**ESTABLISHED 1892.**

---

*Telegrams: "Hadlow Down."*

*Station: Buxted (L.B. & S.C.R.)*

□  
**Outdoor  
Occupation  
a Speciality.**  
□



□  
**The usual  
Recreations  
of a Country  
House.**  
□

**For the reception of 15 gentlemen requiring  
rest and quietness, but who are not  
ill enough for certificates.**

---

**Terms from 5 Guineas per week.**

---

Full particulars from :: :: **PHILIP H. HARMER.**

## **EPILEPSY**

Is so uniformly and so remarkably benefited by the use of

### **GELINEAU'S DRAGEES**

(Pot.-Brom.; Antim.-Arsen.; Picrotoxine)

that no case should be considered hopeless until these Dragees have been thoroughly tried. RELIEF—AND A GREAT DEAL MORE—are usually obtained even when routine treatment fails completely.

### **GELINEAU'S DRAGEES**

are successfully prescribed by leading Physicians, and are used in Hospitals and Epileptic Colonies. *Their use is also indicated in the nervous and painful crises of Menstruation and in the varying manifestations of Shell Shock.*

In tins of 50 and 150. Full particulars from the general Agents for the United Kingdom:

**WILCOX, JOZEAU & Co., 49, Haymarket, London, S.W. 1.**

A. K. CO.

ALWAYS USE

# **REFLEX**

## **FLOOR POLISH.**

REQUIRES NO MIXING WHATEVER.

**Brilliantly Polishes Floors, Linoleums, Floorcloths, &c.**

*Economical, Cleanly, Healthful; Maximum of Lustre for Minimum of Labour.*

**GEO. T. COX & SONS, Ltd.,**

**31, KING WILLIAM STREET, LONDON BRIDGE, E.C.**

This Polish is specially adapted for use in Public Institutions and other large establishments. Samples Free on application

# JOURNAL OF MENTAL SCIENCE.

CONTENTS FOR JULY, 1919.

	Pages
<b>Original Articles.—</b>	
The Present Position in Clinical Psychology. Presidential Address, by William McDougall, Major, R.A.M.C.(Temp.), M.B., F.R.S.—Mental Wards with the British Expeditionary Force: A Review of Ten Months' Experience; by W. D. Chambers, M.A., M.D.—"Psychic Secretion: The Influence of the Environment"; by Lieut.-Col. E. P. Cathcart, M.D., R.A.M.C.—The Genesis of Delusions: Clinical Notes; by Colin McDowall, M.D.—Some Present-day Problems Connected with the Administration of Asylums; by Bedford Pierce, M.D., F.R.C.P.Lond.	141—201
<b>Clinical Notes and Cases.—</b>	
A Group of Fits; by Alan McDougall, M.D.	202—204
<b>Reviews.—</b>	
Papers on Psycho-analysis; by Ernest Jones, M.D., M.R.C.P.Lond.—Criminology; by Maurice Parmelee, Ph.D.—A Plea for the Insane; by L. A. Weatherly, M.D.	204—209
<b>Epitome of Current Literature.—</b>	
A Form of Pseudo-hermaphroditism in the Insane [Certain Pluriglandular Anomalous Functions Associated with Psychopathic Sexual Interests]	209—210
<b>Notes and News.—</b>	
The Medico-Psychological Association of Great Britain and Ireland: Quarterly Meeting.—Northern and Midland Division.—South-Western Division.—South-Eastern Division.—Scottish Division.—Correspondence.—Prison Reform.—Obituary.—Appointments.—Notice to Contributors	211—217

---

ADLARD AND SON AND WEST NEWMAN, LTD., IMPR., LONDON AND DORKING.