

PREHOSPITAL and DISASTER MEDICINE

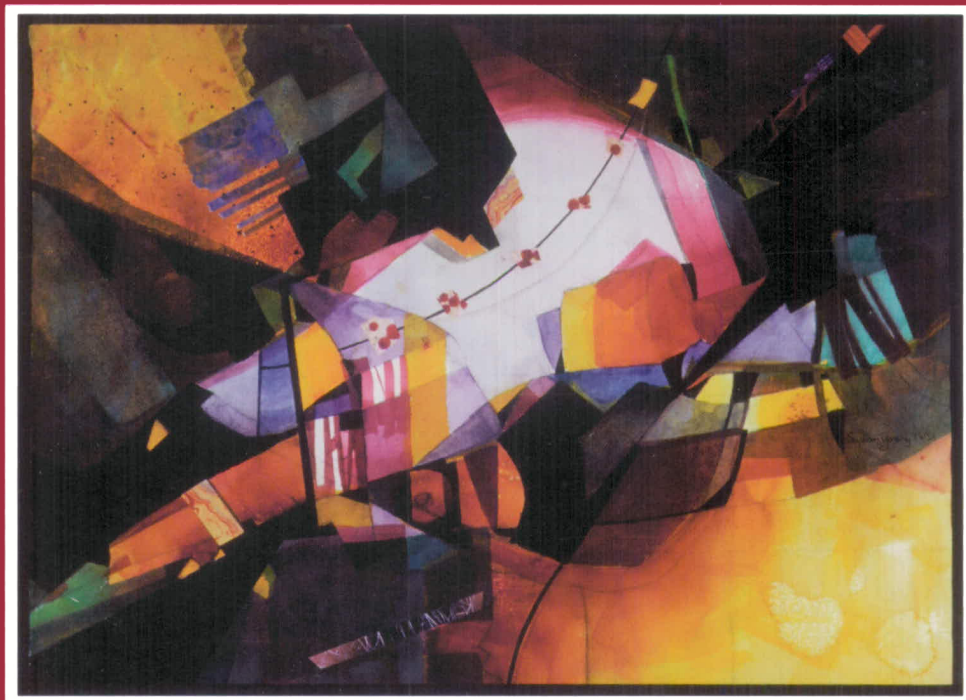
Médecine Pré-Hospitalière et Médecine de Catastrophe

Medicina Prehospitalaria y de Catástrofes

病院にかかる前の処置と
災害医療

Volume 25, Number 4

July–August 2010

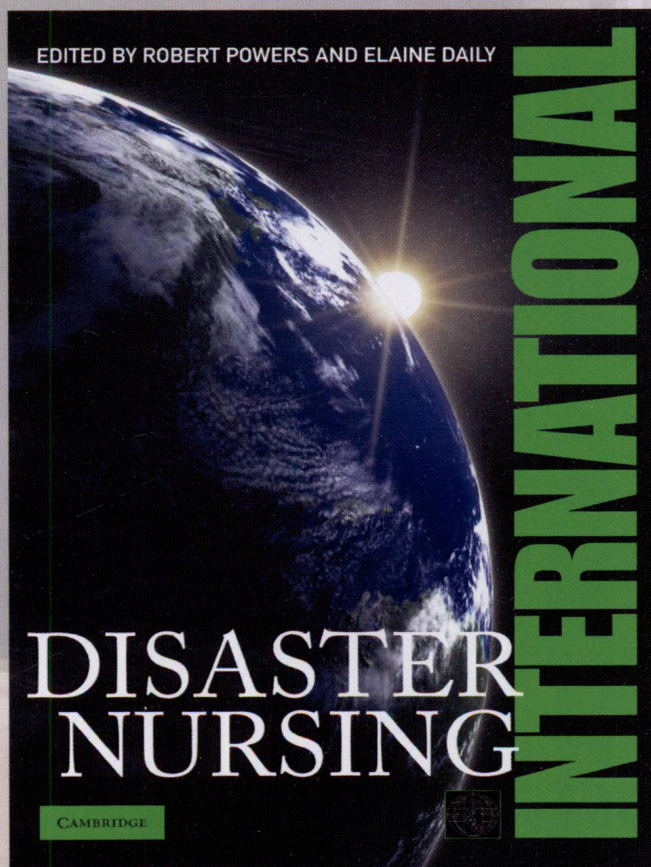


<http://pdm.medicine.wisc.edu>

The Official Journal of the
World Association for Disaster and Emergency Medicine

Forthcoming Title!

International Disaster Nursing



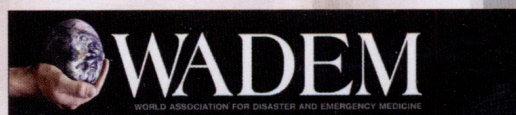
International Disaster Nursing is co-edited by WADEM members, **Elaine Daily** and **Robert Powers**, with contributions from many of the **WADEM International Membership**. The book is being published by **Cambridge University Press**.

USD \$89 • ISBN:9780521168007 • Paperback • 648pp
Available in April 2010

International Disaster Nursing is an accessible, comprehensive resource that addresses a multitude of scenarios and highlights the diversity of issues that nurses, and indeed all health professionals, may face during a disaster event. This text identifies and defines the many roles of the nurse and aids the implementation of the community's disaster plans in a crisis. It provides important information regarding regional and international emergency management agencies and how nurses might coordinate efforts with these groups to ensure that the best possible level of care is provided during a disaster situation.

FEATURES

- Comprehensive, evidence-based and cutting edge in terms of topicality, quality and content
- Co-published with the 'World Association for Disaster and Emergency Medicine' (WADEM)
- Highly accessible in style, broken down into digestible chunks, with generous use of figures, tables and photos



CAMBRIDGE

Contact:

Cambridge University Press North American Branch
40 West 20th Street, New York, NY 10011-4211, USA
Phone +1 212 924 3900
Fax +1 212 691 3239
Email information@cup.org
Web www.cambridge.org/us

Order Your Copy Today!

Table of Contents

Editor's Corner

- Building Together** 287
Marvin L. Birnbaum, MD, PhD

Original Research

- Prior Exposure to Major Flooding Increases Individual Preparedness in High-Risk Populations** ... 289
J.E. Coulston, MBBCh, MRC Disaster Relief Healthcare; P. Deeny, RN, RNT, BSc(Hons) Nursing, Adv Dip Ed

- H1N1: Communication Patterns among Emergency Department Staff during the H1N1 Outbreak, April 2009** 296
Kelly R. Klein, MD; Hillary Cohen, MD; Cindy Baseluos, MD; John Marshall, MD; Antonios Likourezos, MS, MPH; Ashika Jain, MD; Steven Davidson, MD, MBA

- Association between Patient Unconscious or Not Alert Conditions and Cardiac Arrest or High-Acuity Outcomes within the Medical Priority Dispatch System "Falls" Protocol** 302
Jeff Clawson, MD; Christopher Olola, PhD; Greg Scott, MBA; Bryon Schultz, BA; Richard Pertgen; Don Robinson, BA; Barry Bagwell; Brett Patterson

- Does Emergency Medical Dispatch Priority Predict Delphi Process-Derived Levels of Prehospital Intervention?** 309
Karl A. Sporer, MD, FACEP, FACP; Alan M. Craig, MSc; Nicholas J. Johnson, BS; Clement C. Yeh, MD
 -WITH-
Editorial Comments by Jeff Clawson, MD 318

- Physiological Scoring: An Aid to Emergency Medical Services Transport Decisions?** 320
Kirsty Challen, MRes (Public Health), MCEM; Darren Walter, FRCS, FCEM
 -WITH-
Editorial Comments by Gerard Doyle, MD 324

- Geographical Maldistribution of Pediatric Medical Resources in Seattle-King County** 326
Mary A. King, MD, MPH; Kathryn Koelemay, MD, MPH; Jerry Zimmerman, MD, PhD; Lewis Rubinson, MD, PhD
 -WITH-
Editorial Comments by Samuel J. Stratton, MD, MPH 333

- Utilization of Warning Lights and Siren Based on Hospital Time-Critical Interventions** 335
Andreia Marques-Baptista, MD; Pamela Ohman-Strickland, PhD; Kimberly T. Baldino, BS, EMT-B; Michael Prasto, MS; Mark A. Merlin, DO, EMT-P, FACEP

- Prehospital Rapid Sequence Intubation in an Emergency Medical Services System with Two Advanced Life Support Providers** 341
Mark A. Merlin, DO, EMT-P, FACEP; Huma Safdar, MD; Susan Calabrese, EMT-P; Alex Lewinsky, EMT-P; Joseph Manfre, EMT-P; Stephen Van Pelt, MS-IV; Andreia Marques-Baptista, MD

- Tactical Medical Skill Requirements for Law Enforcement Officers: A 10-Year Analysis of Line-of-Duty Deaths** 346
Matthew D. Sztajnkrzyer, MD, PhD, FACEP
 -WITH-
Editorial Comments by Ashley G. Anderson, Jr., MD, MS, FACS, CPE 352

Special Report

- Development of Disaster Pamphlets Based on Health Needs of Patients with Chronic Illnesses**354
*Emi Motoki, RN, BN; Kikuko Mori, RN, MSN; Hidesuke Kaji, MD, PhD; Yoko Nonami, RN, PhD;
 Chika Fukano, RN, PhD; Tomonori Kayano, RN, BN; Terue Kawada, RN, MSN; Yukari Kimura, RN, BN;
 Kumiko Yasui, RN, BN; Hiroko Ueki, RN, MSN; Kazuhiro Ugai, MD, PhD*

Case Study

- Pakistan Earthquake: Experiences of a Multidisciplinary Surgical Team**361
Asim Rajpura, MRCS; Ihab Boutros, MRCS; Tabir Khan, FRCS (T&O); Soubail Ali Khan, FRCS
 -WITH-
Editorial Comments by K.A. Kelly McQueen, MD, MPH368

Letter to the Editor

- Training Novice Users in Bag-Valve-Mask Technique**370
Adrian A. Matic, MD
- Disaster Coordination Needs More than the "Health Cluster"**372
Richard Zoraster, MD, MPH

Special Report

- Global Health Cluster Position Paper: Removing User Fees for Primary Healthcare Services during Humanitarian Crises**374
Global Health Cluster; Inter-Agency Standing Committee;
- Guidelines for Reports on Health Crises and Critical Health Events**377
Per Kulling, MD; Marvin Birnbaum, MD, PhD; Virginia Murray, FRCP; Gerald Rockenschuab, MD, MPH

Editorial Office

University of Wisconsin-Madison USA

Editor-in-Chief

Marvin L. Birnbaum, MD, PhD

Production Editor

Dana Schmidman

Editorial Assistants

Sarah Covington
 Jackson Helmer

Advertising

Andrew Lavelle

Subscriptions

Andrew Lavelle

Web Editor

Jackson Helmer

Publisher

World Association for Disaster and
 Emergency Medicine
 Madison, Wisconsin USA

Prehospital and Disaster Medicine (ISSN 1049-023X) is published bimonthly in the months of January, March, May, July, September, and November by the World Association for Disaster and Emergency Medicine. *Prehospital and Disaster Medicine* incorporates the *Journal of the World Association for Emergency and Disaster Medicine* and the *Journal of Prehospital Medicine*.

Editorial Information: Submit manuscripts and editorial inquiries to: Marvin L. Birnbaum, PhD, MD, Editor, *Prehospital and Disaster Medicine*, Clinical Science Center, 600 N. Highland Ave, Mail Code 6733, Madison, WI 53792 USA; Telephone (+1) (608) 263-9641; Facsimile (+1) (608) 265-3037; E-mail: mlb@medicine.wisc.edu or pdm@medicine.wisc.edu.

Subscription Information: One year (six issues)—Institutions: [US] \$400; Individuals: \$120; International subscribers add \$6 per year for postage. Claims of non-receipt or damaged issues must be filed within three months of cover date. POSTMASTER: Send address changes to *Prehospital and Disaster Medicine*, PO Box 55158, Madison, WI 53705-8958 USA.

Advertising Information: Andrew Lavelle; *Prehospital and Disaster Medicine*, Clinical Science Center, 600 N. Highland (6733), Madison, WI 53792 USA; E-mail: pdm@medicine.wisc.edu.

Comprehensively indexed by the National Library of Medicine (MEDLINE), Cumulative Index to Nursing and Allied Health (CINAHL) and Health Star Cumulative Index. The database is available online via BRS, Data-Star, and DIA-LOG, and on CD-ROM through CD Plus, Compact Cambridge and Silver Platter. Abstracts and search capability available on the Internet at <http://pdm.medicine.wisc.edu>.

Copyright © 2010 by the World Association for Disaster and Emergency Medicine. Periodicals postage paid at Madison, WI and at additional mailing offices.

ADVERTISING POLICY AND GUIDELINES

General Statement

Prehospital and Disaster Medicine (PDM) is a scientifically based, peer-reviewed, medical journal. It is the policy of the Editorial Board of PDM that all advertising material be sound scientifically, and thus, meet the following guidelines:

1. Claims must be supported scientifically, and references provided—either within the advertisement or made available upon request;
2. Every effort must be directed to minimize the likelihood of possible erroneous interpretations of the claims; and
3. Advertisements should be aimed at a sophisticated, medical audience.

Further information and rates available at our Website: <http://pdm.medicine.wisc.edu>.

Review

Each advertisement considered for publication is submitted to the Editorial Office for review. Any advertisement that does not meet the guidelines will be returned to the advertiser with suggestions for revisions; the Editorial Office is available for consultation.

Use of these guidelines and the process used for review add to the credibility of PDM and of the product. Questions may be directed to Marvin L. Birnbaum, MD, PhD, Editor-in-Chief; (+1) (608) 263-9641; E-mail: mlb@medicine.wisc.edu.

INFORMATION FOR READERS

Subscription Prices (6 issues)

Institutional	[US] \$400
Individual	\$120

"Institutional Subscribers" are defined as multiple reader subscribers and include public and private libraries, schools, hospitals, and clinics; city, county, state, provincial, and national government bureaus and departments; and all commercial and private institutions and organizations.

Individual subscriptions must be in the name of, billed to, and paid by individuals.

Send all subscription orders and questions to: *Prehospital and Disaster Medicine*, PO Box 55158, Madison, WI 53705-8958 USA.

Subscription by e-mail: pdm@medicine.wisc.edu; call (+1) (608) 263-2069; or fax (+1) (608) 265-3037. Credit cards are welcome.

Change of Address or Missing Issues

Inform the *Prehospital and Disaster Medicine* office as soon as possible when you plan to move. (Four to six weeks notice is required for uninterrupted service.) Send: (1) old address; (2) new address; and (3) effective date of change.

Back Issues

A limited supply of back issues not included in your subscription is available. Contact the Editorial Office for availability.

Online Version

Issues are posted on the *Prehospital and Disaster Medicine* Website. Except for the two most current issues, articles can be downloaded without charge. The two most current issues are password protected for subscribers.

Abstracts

All of the abstracts of papers through the most recent volume are available on the *Prehospital and Disaster Medicine* Website.

Cover Artwork: *Kaleidoscope*
 Medium: Watercolor and Collage
 By: Susan Young

Susan is a watercolorist residing in Madison, Wisconsin. She belongs to the Madison Watercolor Society, and is a member of the Transparent Watercolor Society of America.

INSTRUCTIONS FOR AUTHORS

Organization of Manuscripts

Manuscripts in one of five different categories can be submitted for review and publication in *Prehospital and Disaster Medicine* (PDM): (1) Original Research; (2) Special Report; (3) Comprehensive Review; (4) Case Report; or (5) Brief Report. All manuscripts submitted for publication must include an abstract that summarizes the work. Other types of manuscripts must have the approval of the Editor before being submitted or may be invited by the Editor or a member of the Editorial Board. All Abstracts submitted by the Secretariat of a Congress will be edited by the Editorial Staff into the best English possible prior to publication. Please specify the type of manuscript being submitted. The characteristics specific to each of these categories are described briefly below:

1. **Original Research**—structured research that uses quantitative and/or qualitative data collection and processing methods to establish a hypothesis or prove a cause:effect relationship(s) is included in this category. The manuscript must be structured as follows:

Abstract—Concise summary in the following format (*not to exceed 375 words*):

Introduction: need for the study.

Hypothesis/Problem: what was tested (experimental studies only) If qualitative, statement of problem addressed.

Methods: summary of methods used with subsections as appropriate (type of subjects, number of subjects, study design, statistical tests). If the work is qualitative, the types of instruments used and the scope and type of work must be described. *If a disaster is involved, the dates, type of event, location, scope, magnitude, and numbers of casualties and deaths must be summarized in tabular form for indexing.*

Results: summary of principal findings.

Conclusion: implications of findings.

Introduction—Provide justification for the effort with appropriate references annotated. If quantitative, the concluding sentence should define the hypothesis. If qualitative, the problem being addressed should be stated clearly.

Methods—Descriptive to a degree that other investigators would be able to reproduce the study. Statistical methods used must be annotated. Approval by an Institutional Review Committee **must** be included when appropriate.

Results—Results **must** be written in text and may be accompanied by tables and figures. The text **must** explain all data included in tables and figures, but should not be redundant. All direct results from the study must appear in this section. *No discussion of the results may be included.*

Discussion—The Discussion should provide an interpretation of the Results in terms of meaning and application. Results should not be repeated. Computations or extrapolations that may help explain the results may be provided. Limitations of the study should be defined and suggestions for future research should be included. References that support or negate explanations provided are appropriate.

Conclusions—The findings in terms of implications for the practice of prehospital, emergency, and/or disaster medicine should be summarized in a few sentences.

2. **Special Report**—Describes some aspect of our science or activities that provide information necessary for the progression of the science. The *Introduction* should highlight the problem being addressed and the reasons that it needs to be addressed. Sections of the report should be subtitled. The presentation should include citations as to the sources of the material and should be followed by a *Discussion* that includes the significance of the report in terms of the science. The manuscript should be finished with the *Conclusions* reached.
3. **Comprehensive Review**—A review of the literature to be used to clarify areas in which there seems to be disagreement. Comprehensive Reviews seek to establish the evidence-base for the area being addressed. The format used should be identical to that described for Special Reports.
4. **Case Report**—Uses one or more cases of specific patients or events/responses to highlight a current aspect of medical care or of a phenomenon. Case Reports also may have value in the development of definitive research projects by the same or other investigators. The *Introduction* should describe the reasons for the report. The actual *Case Report(s)* should be described in the next section, and like the above, the *Discussion* should describe the significance of the reports including a comprehensive review of the pertinent literature. The *Conclusion* should be similar to the format noted above.
5. **Brief Report**—A short report that may predict a trend, but the work does not meet all of the criteria required for Original Research. Preliminary reports also are included in this category. The format used should be identical to that used for the Original Research described above.

General Submission Requirements

Manuscripts—Manuscripts are preferred in electronic form (disk, CD, or e-mail) with a cover letter, cover page, and manuscript. Electronic format: the cover letter, cover page, and manuscript should be sent as separate electronic files on one diskette or CD in Microsoft Word. Please label the diskette or CD and include the paper's title and the primary author's surname. Electronic files may be submitted to our office via e-mail to the following address: ds5@medicine.wisc.edu or pdm@medicine.wisc.edu. If the manuscript is submitted by mail, please include paper version of the cover letter, cover page, and one paper copy of the manuscript to accompany the disk. If submitting the article in paper form only, please send one cover letter, the cover page, and manuscript. If electronic format is not available, we will accept manuscripts in paper form.

Previous Publication—A manuscript will be considered only if it has not been published previously and is not under consideration for publication elsewhere.

Copyrights—After acceptance for publication, the copyright to the manuscript, including all tables and figures, rests with *Prehospital and Disaster Medicine*.

Cover Letter—Each manuscript should be accompanied by a signed cover letter from the primary author who attests to the original nature of the material, that the paper has not been published elsewhere, is not under consideration by any other publication, and that the authors agree to transfer copyright to *Prehospital and Disaster Medicine* if accepted for publication. The institution(s) in which the work was performed, the sponsoring institution(s), and the respective departments must be annotated. If the work was supported all or in part by grants or endowments, the granting institution(s) should be indicated. If the paper has been, or is to be presented in a forum orally or as a poster, indicate the title of the forum, sponsoring institution, and the date of presentation. Specify the name of the author with whom any correspondence should be directed, and, correspondence street address, telephone number, facsimile (fax) number, and e-mail address if appropriate. The type of manuscript also should be specified.

Cover Page—Include a cover page that includes the title of the paper, first names, middle initials, last names, and highest academic degrees of all authors. Reiterate from the cover letter the name of the author with whom any correspondence should be directed and the street address, telephone number, facsimile (fax) number, and e-mail address if appropriate. Do not indicate author names or institutions anywhere in the manuscript other than on the cover page.

Language—All manuscripts must be submitted in English. Also, do not use *I*, *We*, or *Our* when describing the researchers. The fact that the research was conducted by the authors is implicit.

Abbreviations for groups of words may be used only for unusually cumbersome titles or for commonly accepted abbreviations. Whenever such abbreviations are used, they must be annotated with the initial mention of words within the manuscript followed by the abbreviation in parentheses. In addition, list eight or more keywords or phrases in alphabetical order separated by semicolons to facilitate indexing or electronic searches.

Paper, Margins, and Type Style—Manuscripts should be submitted on plain white paper, letter size up to A4, 8.27" by 11.69" (210 mm by 297 mm). *Do not right justify the margins.* Use standard type styles. Double space all text.

Generic Names—Whenever possible, use generic names. Brand names may be indicated parenthetically and the name and location of the manufacturer must be provided in parentheses followed by a generic description of the medication, drug, product, or equipment.

References—References **must** be cited in the sequential order in which they appear in the text. All references should be parenthetically cited by full-sized Arabic numbers in the text, tables, and legends for illustrations. Repeated use of a reference must bear the number of the first time this reference is used. Titles of journals referenced must be annotated using standard *Index Medicus* abbreviations and must be italicized. Unpublished data or personal communications should be indicated in parentheses directly following the reference and should include the dates of such correspondence (Personal Communication, Safar P, October 1989). The following format for references **must** be used:

Journals—White SJ, Hamilton WA, Veronesi JF: Comparison of field techniques used to pressure infuse intravenous fluids. *Prehosp Disast Med* 1991;6:429–434.

Books—Schwartz GR, Safar P, Stone JH, *et al* (eds), *Principles and Practice of Emergency Medicine*. 2d ed. Philadelphia: WB Saunders Co., 1985, pp 1198–1202.

Chapters—Lindberg R: Pathology of Head Injuries. In: Cowley RA, Trump BF (eds), *Pathophysiology of Shock*. Baltimore: Williams and Wilkins, 1982, pp 588–592.

Website—International Crisis Group: Impact of the Bali bombings. Available at http://www.crisisweb.org/projects/asia/indonesia/reports/A400804_24102002.pdf. Accessed 09 June 2003.

Tables—Tables must be numbered as referenced in the text and each typed on a separate page, placed at the end of the manuscript. Do not include tables in the body of the text.

Figures—Illustrative materials **must** be of professional quality, should be submitted as large as possible, up to 8.27" by 11.69" (A4 210 mm by 297 mm), and be at **least 600 dpi resolution**. Color illustrations must be discussed with the editor. All graphs and charts must be saved in a JPG/TIFF format and are to include a legend. Photos also can be mailed to the PDM office. They must be high gloss and 600 dpt.

Permissions—Illustrations or tables from other publications must be accompanied by written permission from the author and publishers of the document in which they originally appeared.

Publication Schedule—Manuscripts should be published within 4 to 6 months of acceptance and receipt of revisions.

Additional Information

Contact Marvin L. Birnbaum, MD, PhD, Editor, *Prehospital and Disaster Medicine*, 3330 University Avenue, Madison, WI 53705 USA, (+1) (608) 263-9641; E-mail: mlb@medicine.wisc.edu.

Visit our Website: <http://pdm.medicine.wisc.edu>.

EDITOR-IN-CHIEF**Marvin L. Birnbaum, MD, PhD**University of Wisconsin-Madison
Madison, Wisconsin USA**ASSOCIATE EDITORS****Wolfgang Dick, Dr Med**Johannes Gutenberg Universität
Mainz, Germany**Kimball Maull, MD, FACS**Department of Surgery
Hamad General Hospital
Doha, Qatar**Steven Rottman, MD**University of California-Los Angeles
Los Angeles, California USA**DEPUTY EDITORS****David A. Bradt, MD, MPH**Royal Melbourne Hospital
Melbourne, Australia**Geert Seynaeve, MD**

Brussels, Belgium

Samuel Stratton, MDUniversity of California-Irvine
Los Angeles, California USA**Darren Walter**University Hospital of South
Manchester
Manchester, UK**SECTION EDITORS***Humanitarian Affairs***Fredrick M. Burkle, MD, MPH, DTM**Senior Fellow and Scientist
Harvard Humanitarian
InitiativeHarvard University
Cambridge, Massachusetts
USASenior Public Policy Scholar
Woodrow Wilson International
Center for Scholars*International Health Law
and Ethics***Michael Hoffman, JD**

Washington, DC USA

PAST EDITORS**Peter Safar, MD**Deceased
(JWAEDM 1981-1985)**R. Adams Cowley, MD**Deceased
(JWAEDM 1986-1987)**EDITORIAL BOARD****Carol Amarungta, PhD**Justice Institute of British
Columbia
New Westminster, British
Columbia Canada**Ahmed Ammar, MD**King Fahd Medical Complex
Riyadh, Saudi Arabia**Paul Arbon, PhD**School of Nursing and
Midwifery
Flinders University
Adelaide, South Australia**Prof. Frank Archer, MD**Monash University
Melbourne, Australia**Jeffrey Arnold, MD**Department of Emergency
Medicine
Santa Clara Valley Medical
Center
San Jose, California USA**Col. Dr. Yaron Bar-Dayana,
MD, MHA**Israeli Defense Forces Home
Front Command
Or-Yehuda, Israel**Joost Bierens, MD, PhD**

Amsterdam, The Netherlands

Tareq Bey, MDDepartment of Emergency
Medicine
University of California, Irvine
Orange, California USA**Richard A. Bissell, PhD**University of Maryland-
Baltimore County
Baltimore, Maryland USA**Felipe Cruz-Vega, MD**Social Security
Mexico City, Mexico**Robert A. De Lorenzo, MD,
MSM, FACEP**Medical Corps
United States Army
San Antonio, Texas USA**Claude de Ville de Goyet,
MD**Consultant
Brussels, Belgium**Judith Fisher, MD**Consultant, Disaster Medicine
Pleasant Hill, California USA**Erik S. Gaull**George Washington University
Washington, DC USA**P. Gregg Greenough, MD,
MPH**Director of Research, Harvard
Humanitarian Initiative
Boston, Massachusetts USA**Michael Gunderson**President, Integral Performance
Solutions
Lakeland, Florida USA**S. William A. Gunn, MD**European Centre for Disaster
Medicine
Geneva, Switzerland**Keith Holtermann, MD**George Washington University
Washington, DC USA**Mark S. Johnson, MPA**Retired Chief of EMS
Juneau, Alaska USA**Mark Keim, MD**Centers for Disease Control
and Prevention
Atlanta, Georgia USA**Per Kulling, MD**National Board of Health and
Welfare
Stockholm, Sweden**Todd J. LeDuc, EMT-P**Deputy Fire Chief
Broward Sheriff Fire Rescue
Ft. Lauderdale, Florida USA**Gloria Leon, PhD**Professor of Psychology
University of Minnesota
Minneapolis, Minnesota USA**Graeme McColl**Ministry of Health
New Zealand**Andrew Milsten, MD, MS,
FACEP**University of Maryland
Emergency Medicine
Baltimore, Maryland USA**Jerry Overton, MPA**President/CEO
Road Safety International
USA**Paul Paris, MD**Center for Emergency
Medicine
University of Pittsburgh
Pittsburgh, Pennsylvania USA**Lynda Redwood-Campbell,
MD, MPH**Department of Family
Medicine
McMaster University
Hamilton, Ontario Canada**Edward Ricci, PhD**University of Pittsburgh
Pittsburgh, Pennsylvania USA**Leonid B. Roshal, MD**Institute of Pediatrics
Academy of Medical Sciences
Moscow, Russia**Don Schramm**University of Wisconsin-Madison
Madison, Wisconsin USA**Ronald Stewart, MD**Victoria Hospital
Halifax, Nova Scotia Canada**Knut Ole Sundnes, MD**Baerum Hospital
Oslo, Norway**Takashi Ukai, MD**Hyogo Emergency Medical
Center
Hyogo, Japan**Michael Van Rooyen, MD**Associate Professor, Harvard
Medical School, Brigham
and Women's Hospital
Boston, Massachusetts USA