

THE COUNCIL OF
THE HELICOPTER ASSOCIATION OF GREAT BRITAIN

wish to record their appreciation
of Advertisers' support

ALVIS LIMITED



HOLYHEAD ROAD, COVENTRY
Telephone: Coventry 5501

Pioneers of Rotating Wing Aircraft



ELECTRO-HYDRAULICS LIMITED



Undercarriages
Hydraulic
Electro Hydraulic and
Pneumatic Equipment

LIVERPOOL ROAD
WARRINGTON
Telephone: Warrington 2244

THE FAIREY AVIATION CO. LTD



Hordern-Richmond Ltd

MANUFACTURERS OF

Helicopter Rotor Blades

HYDULIGNUM WORKS HADDENHAM BUCKS
TELEPHONE AYLESBURY 1100-1102

THE DECCA NAVIGATOR



THE WORLD'S MOST ACCURATE
NAVIGATION SYSTEM

KELVIN & HUGHES (AVIATION) LTD



NEW NORTH ROAD BARKINGSIDE ESSEX
TEL HAINAULT 2601
WINCHESTER ROAD BASINGSTOKE HANTS
TEL BASINGSTOKE 690



AIRCRAFT EQUIPMENT

EDITORIAL NOTICES

Papers submitted for publication in the JOURNAL should be submitted to the CHAIRMAN, PUBLICATIONS COMMITTEE, 4, THE SANCTUARY, WESTMINSTER, S W 1

None of the papers or articles must be taken as expressing the opinion of the COUNCIL of the ASSOCIATION, unless such is definitely stated to be the case

The submission of matter for publication will be understood to imply that it is offered to this Journal alone

If accepted for publication, the copyright of papers becomes the property of the Association, but they may be re-published by permission of the Council, provided due acknowledgement be made of their having appeared in the JOURNAL

Papers should, if possible, be typewritten, they should be concisely written with subject matter logically arranged and sub-divided, and with indications of the POSITION, in the text, of illustrations, tables, etc

TITLES should be as brief as consistent with clarity, and in many cases the value of a paper is enhanced by a short SUMMARY

CHARTS, GRAPHS and DRAWINGS should be, if possible, in Indian ink on white board or strong paper, with detail and essential lettering large enough to be clearly legible after reduction if necessary

ILLUSTRATIONS—If the number sent in is considered excessive, the author may be informed and given the opportunity of contributing to the cost

COLOURED PLATES are made only at the author's expense

ADVERTISEMENTS

Approved advertisements are accepted by the Council of the Association for insertion in the official Journal, a minimum of six issues are published annually

The Journal is priced at 10/6 each number (free to Members)

Annual Subscription to non-members, 64/6 post free

Advertisement Rates

Size of page 5½ in wide, 8¼ in deep Type area 4½ in wide, 7¼ in deep

Half-tone illustrations 120/133 screen

*Series rate per issue for six consecutive issues, per page £12 0 0

*Series rate per issue for six consecutive issues, per half page £7 10 0

Colour printing Rates on application

PUBLISHING DATES 1st February, 1st April, 1st June, 1st August, 1st October, 1st December

LATEST DATES FOR COPY Advertisements requiring proofs 7th of month preceding publication Advertisements not requiring proofs 15th of month

Token Panel Announcements

Token Panel Announcements 2½ in × 1¼ in deep are inserted in the Journal for an Annual Subscription to the Association of £18 18s 0d for six insertions

*Panel Announcements are inserted gratis to all Full Page and Half Page Advertisers taking six insertions

Advertisers to Note

All matters relating to advertisements in this Journal should be addressed to the Association's Advertisement Contractors J M P PUBLISHING SERVICES, EFFINGHAM HOUSE, ARUNDEL STREET, LONDON, W C 2 Tel Temple Bar 9525

Redifon

FLIGHT
SIMULATOR
DIVISION

CRAWLEY, SUSSEX ENGLAND

COMPLETE
ELECTRICAL SYSTEMS
for AIRCRAFT by

ROTAX



SAUNDERS-ROE Helicopter Division

EASTLEIGH Southampton Phone Eastleigh 2731
● Head Office OSBORNE EAST COWES ISLE OF WIGHT Phone COWES 2211

SPE COMPANY LTD



SLOUGH BUCKS Tel SLOUGH 23277

Symbols of service to
Aviation
throughout the years



SMITHS

SMITHS AIRCRAFT INSTRUMENTS LTD

THE SPERRY GYROSCOPE CO
LTD



STANDARD TELEPHONES & CABLES
LIMITED

Standard Radio

NEW SOUTHGATE LONDON N 11
Telephone Enterprise 1234



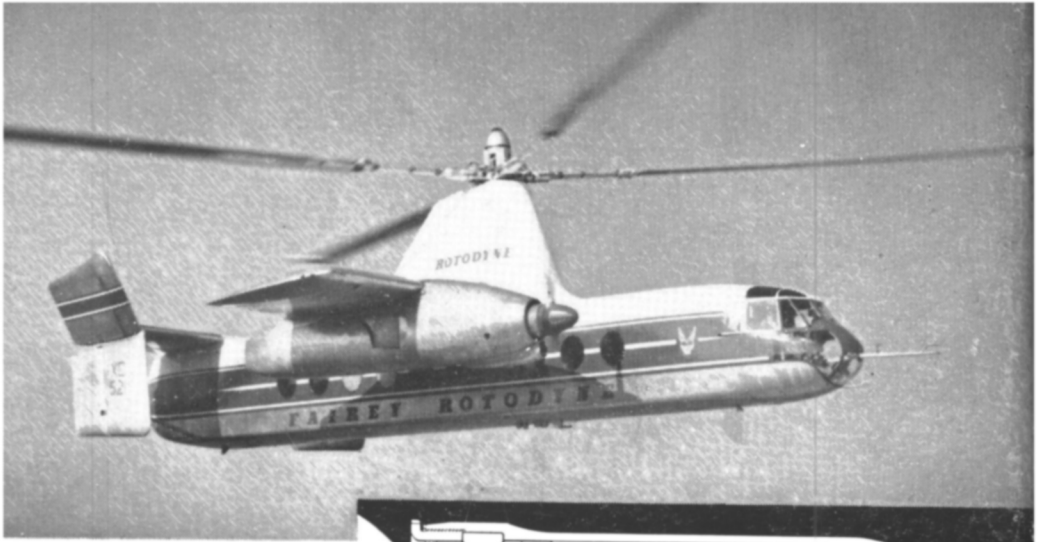
WESTLAND

The Hallmark of British Helicopters

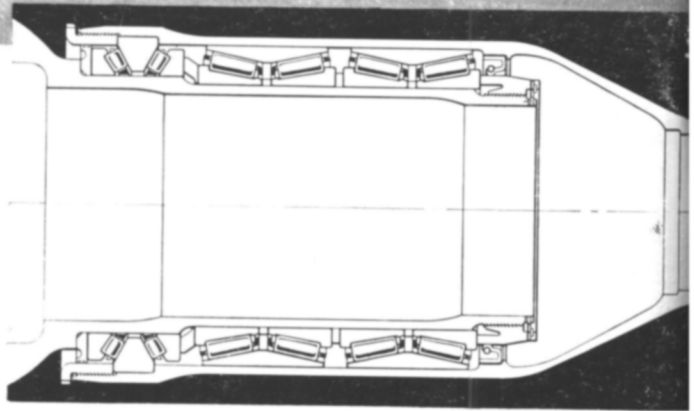
Westland Aircraft Limited Yeovil England



Published for The Helicopter Association of Great Britain Ltd by J M P PUBLISHING SERVICES at Effingham House, Arundel Street London, W C 2 Entered at Stationer's Hall.



On the
feathering
hinges of the
FAIREY
Rotodyne



On this, the world's first vertical take-off airliner, Timken tapered-roller bearings are used in important situations.

The sectional drawing shows the arrangement of the Timken bearings, journal and thrust, in the rotor-blade feathering hinges. Timken bearings are also used on the rotor head (where they carry the entire weight during vertical take-off and a considerable share during forward flight), and in the pitch control mechanism.

The blade roots of the Rotor propellers also have Timken bearings, so have the main and nose wheels.

TIMKEN Regd
Trade
Mark

TAPERED-ROLLER BEARINGS MADE IN ENGLAND BY

BRITISH TIMKEN
LIMITED