

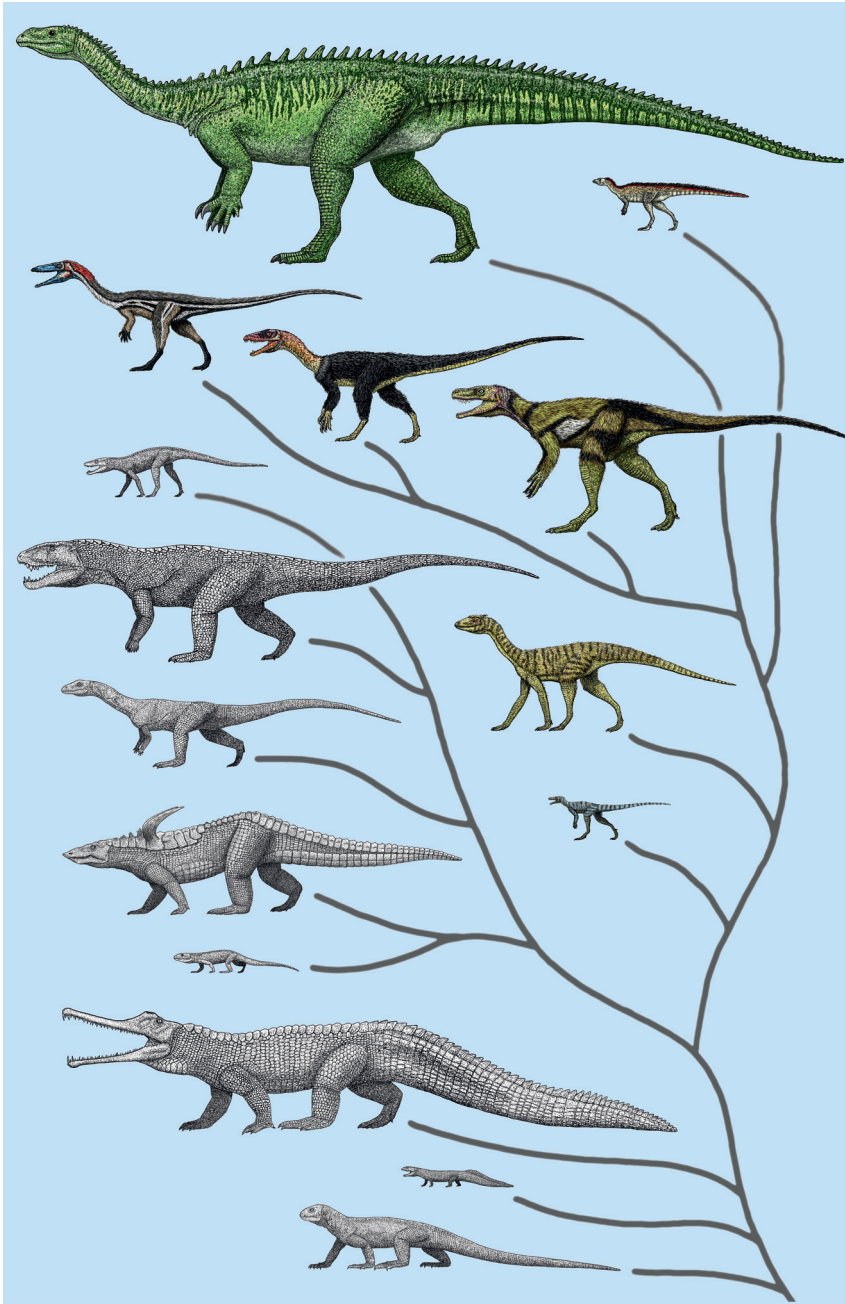
# Earth and Environmental Science

## Transactions of the Royal Society of Edinburgh

volume 101 parts 3 & 4 2011  
(for 2010)

### Special Issue

**Late Triassic Terrestrial  
Biotas and the Rise of  
Dinosaurs**



Published by The RSE Scotland Foundation, 22–26 George Street, Edinburgh EH2 2PQ



The Royal Society of Edinburgh is committed to the widespread dissemination of scientific knowledge and has published the *Transactions of the Royal Society of Edinburgh* since 1785, when James Hutton's 'Theory of the Earth' was published in volume 1. The journal evolved to the *Transactions of the Royal Society of Edinburgh: Earth Sciences* in 1980 and is now (as from 2007) the *Earth and Environmental Science Transactions of the Royal Society of Edinburgh*. Through this journal, the Society continues to encourage and support the international Earth and Environmental Science communities by:

- publishing a journal of international standing and authorship;
- publishing substantial papers on all scientific aspects of the earth and its surface environments;
- publishing without page charges;
- reproducing photographs and artwork to the highest standard, where appropriate at a size larger than is customary; and
- aiming to have papers reviewed within three months by at least two referees of international standing; usually publishing within six months of acceptance.

**The Editorial Board welcomes original manuscripts in the Earth and Environmental Sciences. It also welcomes proposals for Special Issues in these areas.**

#### Editorial Board

Paul BISHOP  
(Chairman & Editor-in-Chief)  
University of Glasgow

Maggie GILL  
Rural & Environmental Research &  
Analysis Directorate

Andrew SMITH  
(Deputy Chairman)  
Natural History Museum, London

Mike BENTON  
University of Bristol

John GRACE  
University of Edinburgh

Colin SNAPE  
University of Nottingham

Michael BIRD  
James Cook University  
Queensland, Australia

Tricia HENTON  
Environment Agency, Bristol

Roy THOMPSON  
University of Edinburgh

Maggie CUSACK  
University of Glasgow

Ian PARSONS  
University of Edinburgh

Anton ZIOLKOWSKI  
University of Edinburgh

Doug FETTES  
British Geological Survey, Edinburgh

Martin SIEGERT  
University of Edinburgh

Duncan MACMILLAN  
(*Ex Officio*: RSE Curator)

#### Consulting Editors

P. AHLBERG  
Lund University  
Sweden

B. W. CHAPPELL  
Macquarie University  
Sydney, Australia

J. DOWDESWELL  
Scott Polar Research Institute  
University of Cambridge, UK

P. A. ALLEN  
Imperial College  
London, UK

I. W. D. DALZIEL  
University of Texas at Austin  
USA

J. C. KNOX  
University of Wisconsin  
Madison, USA

M. ARIMA  
Yokohama National University  
Japan

J. F. DEWEY  
University College, Oxford  
UK

D. WALOSZEK  
Universität Ulm  
Germany

S. BANNO  
Kyoto University  
Japan

P. DONOGHUE  
University of Bristol  
UK

C. T. WILLIAMS  
The Natural History Museum  
London, UK

R. L. CARROLL  
McGill University, Montreal, Canada

*Journals & Archive Officer: Royal Society of Edinburgh: Mrs Vicki M. Hammond*

**COPYRIGHT:** It is the policy of the Royal Society of Edinburgh not to charge any royalty for the production of a single copy of any one article made for private study or research. Specific permission will not be required for photocopying multiple copies of copyright material, to be used for *bona fide* educational purposes, provided this is done by a member of the staff of the university, school or other comparable institution, for distribution without profit to student members of that institution, and provided the copies are made from the original journal. Requests for the copying or reprinting of any article for any other purpose should be sent to the Journals & Archive Officer at the Royal Society of Edinburgh. (publications@royalsoced.org.uk).

*Earth and Environmental Science Transactions of the Royal Society of Edinburgh* publishes one volume per year, usually in three or four parts. Volume 102 (2011) will be published in three parts (two single issues and one double issue).

An annual subscription costs GBP228/ USD432 (Print plus Online) or GBP217/ USD406 (Online only). Orders should be placed with Customer Services, Cambridge University Press, The Edinburgh Building, Shaftesbury Road, Cambridge CB2 2RU UK

Telephone: +44 (0)1223 326070; Fax: +44 (0)1223 325150; email: journals@cambridge.org

*EESTRSE* is indexed/abstracted in the following: Current Contents/Physical, Chemical & Earth Sciences; Biosciences Information Service; Geoabstracts; GEOBASE; Mineralogical Abstracts; Science Citation Index; SciSearch; VINITI (All-Russian Institute of Scientific and Technical Information); *Zoological Record*.

© 2011 The Royal Society of Edinburgh.

The Royal Society of Edinburgh, Scotland's National Academy, is Scottish Charity No. SC 000470

**Cover image:** Evolutionary tree of Triassic archosauromorph reptiles, with a focus on early dinosauromorphs (in colour). Produced by Jeffrey Martz.