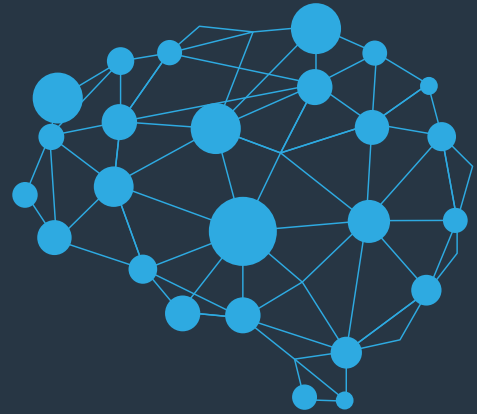


GLOBAL PERSPECTIVES ON MENTAL HEALTH OF OLDER ADULTS: A PRIMER FOR CLINICIANS



International Psychogeriatric Association
Better Mental Health for Older People

alzheimer's
association®

WEBINAR SERIES

presented by IPA

**A GLOBAL CONVERSATION
PLATFORM FOR IPA MEMBERS
& COLLEAGUES**



IPA-1120-193



International Psychogeriatric Association
Better Mental Health for Older People

Submit an Article for the IPA Bulletin!

The *IPA Bulletin* is the quarterly newsletter of the International Psychogeriatric Association (IPA). In addition to news about IPA and related organizations, the *IPA Bulletin* contains articles on recent advances and initiatives in the field in of psychogeriatrics. The *IPA Bulletin* reaches all the members of IPA, including our affiliates around the world.

Research and Practice. The Research and Practice section of the *IPA Bulletin* highlights recent advances in psychogeriatrics and related fields. Articles from all fields related to the mental health of older people are welcome.

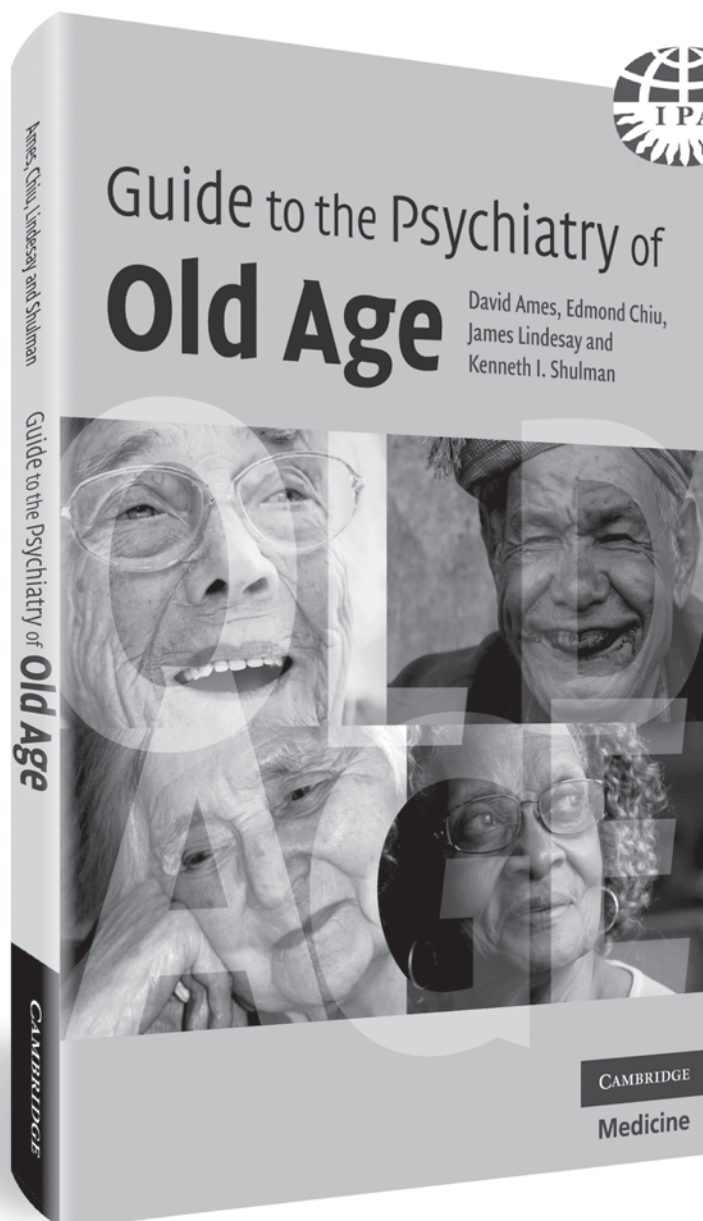
Around the World. The Around the World section of the *IPA Bulletin* features articles by clinicians and researchers which report on activities and issues within their country or region. These articles seek to educate others on the state of the field in other countries and provide unique perspectives from around the world.

To learn more about the *IPA Bulletin*,
visit our website:

www.ipa-online.org

CAMBRIDGE

Medicine



Endorsed by the International
Psychogeriatric Association

David Ames, *University of Melbourne*
Edmond Chiu, *University of Melbourne*
James Lindsay, *University of Leicester*
Kenneth Shulman, *University of Toronto*

**25% discount
for IPA Members**

Enter promotional code
IPA10 when you add to basket

order here
www.cambridge.org/9780521681919

Paperback 9780521681919

July 2010
GBP 29.99

Compact, accessible and affordable

Each chapter is sharp, clear and practical, enhanced by tables and diagrams for quick assimilation and reference on the ward or in the clinic

Coverage also includes legal and ethical issues, and the neglected topic of alcohol and drug abuse in the elderly

www.cambridge.org/medicine





International Psychogeriatric Association

Better Mental Health for Older People

IPA NEEDS YOU!



About IPA

The International Psychogeriatric Association (IPA), founded in 1982 and representing members in more than 50 countries, is a unique and diverse professional healthcare community promoting better geriatric mental health – across disciplines, across borders, and across geriatric issues. Psychiatrists, scientists, neurologists, geriatricians, primary care physicians, epidemiologists, nurses, psychologists, occupational therapists, social workers, and many other healthcare professionals come to the IPA community from all around the world to discuss, learn, share and research information about behavioral and biological aspects of geriatric mental health. IPA promotes research and education, facilitates an international exchange of ideas, and fosters cross-cultural understanding of the latest developments in the field.

IPA Membership

The International Psychogeriatric Association (IPA) encourages professionals from all backgrounds related to geriatric mental health to join our healthcare community. Here are some of the many benefits of joining IPA:

- Unique opportunities to interact with colleagues around the world how share an interest in advancing research, education, and theory about mental health care in older adults.
- Valuable discounts on participation in education and scientific meetings which reflect the full spectrum of disciplines related to psychogeriatrics. Reduced registration rates for the annual IPA International Congress and IPA Regional Meetings are included.
- Relevant publication on updates in the field, including *International Psychogeriatrics*, IPA's peer reviewed journal which publishes twelve issues per year and additional special-focus supplements.
- Access to online educational materials and *The IPA Complete Guides to Behavioral and Psychological Symptoms of Dementia (BPSD)*.
- Subscription to the *IPA Bulletin*, IPA's newsletter which features articles on advances in the field and information on upcoming programs around the world.
- Participation in the IPA Member Forums – smaller member groups which enable members to connect with one another and collaborate on research and clinical care practices. These forums reflect the diversity of interests within geriatric mental health.

How to Join

To learn more about IPA and become a member, please visit our website: www.ipa-online.org. IPA offers a one-year membership for \$160 USD. One-year student or retired memberships are available for \$99 USD. **A limited number of Lifetime Memberships are also available for \$1000 USD.** The IPA Secretariat is available to answer any questions you may have about IPA or membership. Please contact us at +1 414 918 9889 or by email at info@ipa-online.org.

Have Questions? Contact us!

International Psychogeriatric Association
555 East Wells Street, Suite 1100
Milwaukee, WI 53202
United States
Phone: +1 414 918 9889
Fax: +1 414 276 3349
Twitter: @IPA_Online
www.ipa-online.org
info@ipa-online.org



PSYCHOGERIATRICS

VOLUME 21 NUMBER 4 JULY 2021

ORIGINAL ARTICLES

- Gender differences in geriatric syndromes as mental illness and nervous system diseases in hospitalized Thai older patients** 453
Passakorn Suanrueang, Yong-Jiang Shen, Hsiao-Fang Lin, Tze-Kiong Er, Mein-Woei Suen and Fu-An Shieh
- Practitioners' identification of informal caregivers' difficulties with activities of daily living interventions for older people with dementia in Japan** 466
Sayuri Suwa, Akiyo Yumoto, Mari Ueno, Tomoko Yamabe, Yumiko Hoshishiba and Mihoko Sato
- Factors influencing length of hospital stay in an acute psychogeriatric unit** 478
Pierre Koskas, Lauriane Bourdonnec, Samuel Kohler, Mouna Romdhani and Olivier Drunat
- Social frailty and longitudinal risk of depressive symptoms in a Chinese population: the Rugao Longevity and Aging Study** 483
ZeKun Chen, XiaoYan Jiang, GuoPing Shi, Yong Wang, XueFeng Chu, ZhengDong Wang, JiangHong Guo, YinSheng Zhu, Jie Chen, XiaoFeng Wang and ZhiJun Bao
- Empirically defining the preclinical stages of the Alzheimer's continuum in the Alzheimer's Disease Neuroimaging Initiative** 491
Andrew M. Kiselica and for the Alzheimer's Disease Neuroimaging Initiative
- No association of both serum pro-brain-derived neurotrophic factor (proBDNF) and BDNF concentrations with depressive state in community-dwelling elderly people** 503
Asami Ohto, Yoshito Mizoguchi, Yoshiomi Imamura, Naoki Kojima, Shigeto Yamada and Akira Monji
- Behavioural disorders in Alzheimer's disease: the descriptive and predictive role of brain ¹⁸F-fluorodesoxyglucose-positron emission tomography** 514
Pietro Cappelletto, Cristina Polito, Valentina Berti, Gemma Lombardi, Giulia Lucidi, Valentina Bessi, Sandro Sorbi and Camilla Ferrari
- Influence of psychological nursing and health education on depression, anxiety and life quality of elderly patients with lung cancer** 521
Yan Sun, Xiaoyun Wang, Na Li and Junping Bian
- The effect of a psychomotor intervention on electroencephalography and neuropsychological performances in older adults with and without mild cognitive impairment** 528
Eunyoung Kwag, Tim Stuckenschneider, Stefan Schneider and Vera Abeln
- Mental health status of Italian elderly subjects during and after quarantine for the COVID-19 pandemic: a cross-sectional and longitudinal study** 540
Gianpaolo Maggi, Ivana Baldassarre, Andrea Barbaro, Nicola Davide Cavallo, Maria Cropano, Raffaele Nappo and Gabriella Santangelo
- Cognitive reserve and the effects of virtual reality-based cognitive training on elderly individuals with mild cognitive impairment and normal cognition** 552
Hyeoung Kim, Jin Pyo Hong, Jae Myeong Kang, Won-Hyoung Kim, Seri Maeng, Seo-Eun Cho, Kyoung-Sae Na, Seok Hee Oh, Jung Woon Park, Seong-Jin Cho and Jae Nam Bae
- Effect of progressive muscle relaxation on adaptation to old age and quality of life among older people in a nursing home: a randomized controlled trial** 560
Cemile Kütmeç Yilmaz
- Do lonely and socially isolated individuals think they die earlier? The link between loneliness, social isolation and expectations of longevity based on a nationally representative sample** 571
André Hajek and Hans-Helmut König
- Gender-specific factors associated with risk of depression among Lebanese older adults** 577
Christa Boulos and Pascale Salameh
- Relationship between financial well-being, life satisfaction, and cognitive function among low-income community-dwelling older adults: the moderating role of sex** 586
Hui Foh Foong, Sharifah Azizah Haron, Roshanim Koris, Tengku Aizan Hamid and Rahimah Ibrahim
- Discrepancies in persons with dementia, family members, and physician perspectives of dementia treatment: a descriptive study** 596
Yohko Maki, Wataru Ohashi, Hideyuki Hattori and Takao Suzuki
- Does cognitive decline/dementia increase Delirium risk after stroke?** 605
Guanfu Ding, Shunde Hua, Jinming Chen, Shaochun Yang and Ruilu Xie
- How patients with mild dementia living in a nursing home benefit from dementia cafés: a case-control study focusing on psychological and behavioural symptoms and caregiver burden** 612
Rosaria De Luca, Maria C. De Cola, Simona Leonardi, Simona Portaro, Antonino Naro, Michele Torrisi, Angela Marra, Alessia Bramanti and Rocco S. Calabrò
- Effect of different parietal hypoperfusion on neuropsychological characteristics in mild cognitive impairment** 618
Tatsuya Yamaguchi, Hajime Tabuchi, Daisuke Ito, Naho Saito, Bun Yamagata, Mika Konishi, Minoru Takebayashi, Manabu Ikeda and Masaru Mimura
- Association between marital status and cognitive function in Japan: results from the Toyama Dementia Survey** 627
Nobue Nakahori, Michikazu Sekine, Masaaki Yamada, Takashi Tatsuse, Hideki Kido and Michio Suzuki
- Apathy and executive functioning among non-demented community-dwelling elderly individuals in an everyday environment: the mediating effect of impulsivity** 636
Cécilia Cuvillier and Sophie Bayard
- Development of the Dementia Caregiver Positive Feeling Scale 21-item version (DCPFS-21) in Japan to recognise positive feelings about caregiving for people with dementia** 650
Taiga Fuji, Tetsuya Yamagami, Haruyasu Yamaguchi and Tsuneo Yamazaki

REVIEW ARTICLES

- Roles and mechanisms of phospholipid transfer protein in the development of Alzheimer's disease** 659
Hao Wang, Mei-Hua Chen, Wei Chen, Ji-Guo Zhang and Shu-Cun Qin
- Association between swallowing disorders and cognitive disorders in adults: a systematic review and meta-analysis** 668
Shiva Ebrahimian Dehaghani, Afsaneh Doosti and Morteza Zare

CASE REPORTS

- A case presenting with persecutory delusions as an initial symptom of elderly bipolar disorder** 675
Nagisa Katayama, Keisuke Inamura, Ryuichi Yamazaki, Yuki Matsuda, Akihiko Nunomura and Masahiro Shigeta
- Medication-free remission with shunt surgery for depression induced by normal pressure hydrocephalus** 678
Bahadır Demir, Ali Artas, Asilhan Gumuslu Agcabay, Sengul Kocamer Sahin, Gulcin Elboga and Abdurrahman Altindag

PSYCHOGERIATRIC NOTES

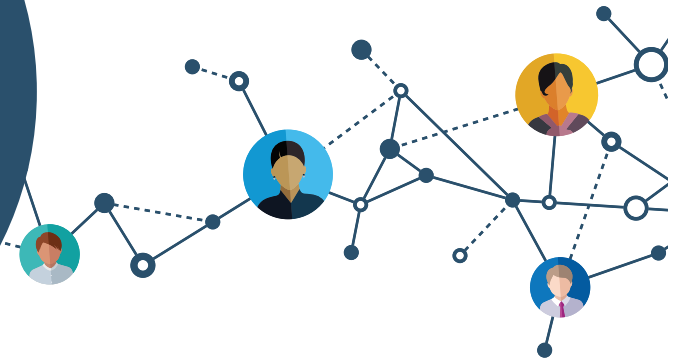
- Repetitive transcranial magnetic stimulation for treatment-resistant depression in an elderly patient with an unruptured intracranial aneurysm: a case report** 681
Yuki Matsuda, Rema Terada, Kodai Yamada, Ryuichi Yamazaki, Akihiko Nunomura, Masahiro Shigeta and Shinsuke Kito
- Visual text hallucinations in a patient with posterior cortical atrophy attributable to Alzheimer's disease and Lewy body disease** 683
Kazuhiro Takeda, Youta Torii, Hiroshige Fujishiro, Naoki Atsuta, Shuji Iritani and Kunihiro Kawashima
- Epileptic cognitive impairment resembling Alzheimer's disease: a new type of treatable neurocognitive disorder** 686
Ukai Katsuyuki, Ito Masumi and Watanabe Masako

LETTERS TO THE EDITOR

- Long-term preoperative use of zolpidem is associated with postoperative delirium in elderly patients undergoing hip surgery** 689
Takahiko Nagamine
- Is 'dementia-friendly design' cost effective? The results of a preliminary literature review** 691
Akihiro Koreki, Mitsuhiro Sado, Nariko Katayama, Alasdair Rutherford and Alison Bowes

2021 IPA Virtual Congress

Live + On Demand
Content



Inclusion, Creativity and Rights - The Future of Older Peoples Mental Health Care



International Psychogeriatric Association
Better Mental Health for Older People

IPA-021-16



Scope and contributions

International Psychogeriatrics is written by and for those doing clinical, teaching, and research work with older people. It is the official journal of the International Psychogeriatric Association (IPA) and is published by Cambridge University Press, Cambridge, UK. Although it is primarily concerned with psychogeriatrics, the journal welcomes contributions from all concerned with the field of mental health and aging. Original research papers are particularly sought.

Contributions include original research articles, reviews of the literature, book reviews, letters to the editor, and editorials. Apart from editorials and book reviews, which are commissioned, contributions to *International Psychogeriatrics* are spontaneously written and submitted by authors. Papers are usually reviewed by two expert reviewers selected by the Editor-in-Chief. At present, about one-third of the papers submitted are accepted for publication. The journal's Science Citation Index impact factor is 2.423 (2016). Submission of a paper implies that it is neither under consideration for publication elsewhere, nor previously published in English. Manuscripts must be formatted double-spaced with ample margins on all sides and the pages should be numbered. *International Psychogeriatrics* uses the spelling of American English. Manuscripts written by those whose primary language is not English should be edited carefully for language prior to submission. The journal has a Language Assistance Panel consisting of both native English speakers willing to check manuscripts for style prior to submission, and bilingual experts willing to assist with the translation of manuscripts into English. Further details including contact information for individual panel members can be found at both the journal and IPA websites (journals.cambridge.org/ipg and www.ipa-online.org).

An up to date version of the journal's instructions for contributors can be found at the *International Psychogeriatrics* website journals.cambridge.org/ipg. Please read these instructions carefully before submitting articles. **Articles that are not prepared in accordance with these guidelines will be returned to authors.**

Manuscripts should be submitted online via our manuscript submission and tracking site, <<http://mc.manuscriptcentral.com/ipg>>. Full instructions for electronic submission are available directly from this site.

Important Addresses

Office of the Editor-in-Chief
Dilip V. Jeste, Editor-in-Chief
International Psychogeriatrics
Sam and Rose Stein Institute for Research on Aging
University of California, San Diego
9500 Gilman Drive #0664
San Diego, CA 92093, USA
Email: ipaj-ed@cambridge.org

For business matters:

Kate Filipiak
Managing Editor, *International Psychogeriatrics*
International Psychogeriatric Association
555 E. Wells Street,
Suite 1100
Milwaukee, WI 53202
United States

Email: ipa@ipa-online.org
Tel: +1 414 918 9889
Fax: +1 414 276 3349
Web: www.ipa-online.org

This journal issue has been printed on FSC-certified paper and cover board. FSC is an independent, non-governmental, not-for-profit organization established to promote the responsible management of the world's forests. Please see www.fsc.org for information.

Enquiries about advertising should be sent to the Journal's Promotion Department of the Cambridge or American Branch of Cambridge University Press.

© 2021 International Psychogeriatric Association

PRINTED IN THE UK BY BELL AND BAIN LTD

International Psychogeriatrics

Issue Theme: Advances in Assessment and Diagnosis of Dementia

CONTENTS

- Commentaries** 1111 **Effective cognitive screening tools for Alzheimer's disease in the primary care setting: the role of the visual paired associative learning task**
Ramit Ravona-Springer
- 1115 **Testing for dementia across the world**
Daryl Fujii
- 1119 **Talking about future decision-making capacity and advance care planning in diagnosis disclosure of dementia**
Kanthee Anantapong and Nathan Davies
- 1123 **Application of the multi-domain relevant outcome measure for Alzheimer's disease in Chinese population**
Chunbo Li
- 1125 **Restriction of activities, social isolation, and dementia**
Perminder S. Sachdev
- 1129 **Is bigger better? Towards a mechanistic understanding of neuropsychiatric symptoms in Alzheimer's disease**
Milap A. Nowrangji and Paul B. Rosenberg
- Theme Articles** 1135 **Associations of visual paired associative learning task with global cognition and its potential usefulness as a screening tool for Alzheimer's Dementia**
Eleanora B. Hicks, Naba Ahsan, Apoorva Bhandari, Zaid Chazala, Wei Wang, Bruce G. Pollock, Tarek K. Rajji, and Sanjeev Kumar
- 1145 **Estimating premorbid intelligence in people living with dementia: a systematic review**
Margot Juliette Overman, Shona Leeworthy, and Tomas J. Welsh
- 1161 **Challenges in disclosing and receiving a diagnosis of dementia: a systematic review of practice from the perspectives of people with dementia, carers, and healthcare professionals**
Jennifer Yates, Miriam Stanyon, Rajvinder Samra, and Linda Clare
- 1193 **Validation of the Chinese Version of the Relevant Outcome Scale for Alzheimer's Disease (CROSA)**
Shuying Zhang, Jianing Qi, Qing Yang, and Qihao Guo
- 1207 **Effects of restriction of activities and social isolation on risk of dementia in the community**
Terry E. Goldberg, Jongwoo Choi, Seonjoo Lee, Barry Gurland, and Davangere P. Devanand
- 1217 **Neuropsychiatric symptoms and brain morphology in patients with mild cognitive impairment and Alzheimer's disease with dementia**
Nikias Sifarakas, Dag Alnæs, Jennifer Monereo-Sanchez, Martina J. Lund, Geir Selbaek, Maria Stylianou-Korsnes, Karin Persson, Maria Lage Barca, Ina Selseth Almdahl, Tormod Fladby, Dag Aarsland, Ole A. Andreassen, and Lars T. Westlye
- Psychogeriatrics* 1229 **Table of Contents**

Cambridge Core

For further information about this journal
please go to the journal website at:
[cambridge.org/ipg](https://www.cambridge.org/ipg)



MIX
Paper from
responsible sources
FSC® C007785

CAMBRIDGE
UNIVERSITY PRESS