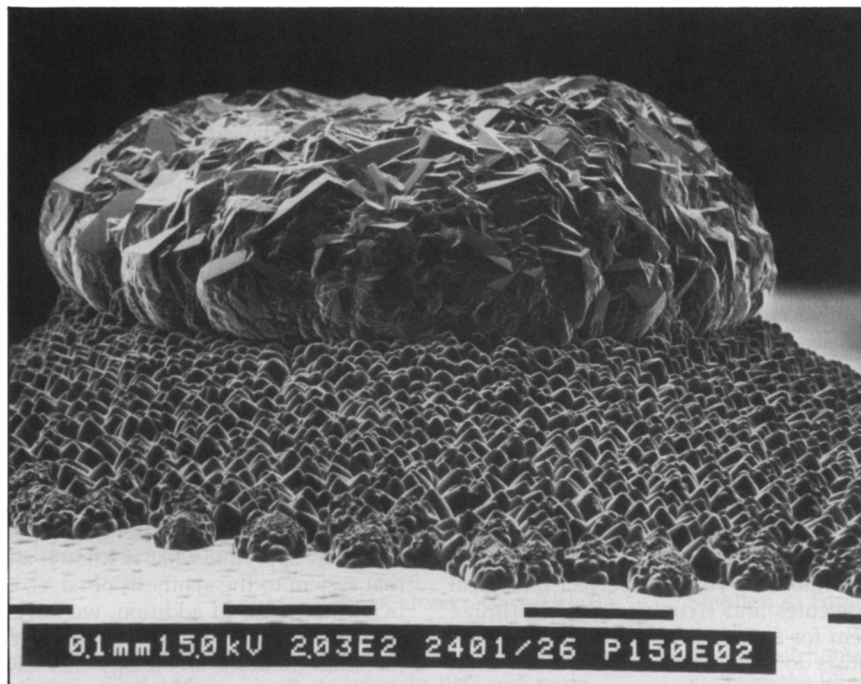


Figures appearing in the EDITOR'S CHOICE are those arising from materials research which strike the editor's fancy as being aesthetically appealing and eye-catching. No further criteria are applied and none should be assumed. When taken out of context, such figures often evoke images beyond and unrelated to the original meaning. Submissions of candidate figures are welcome and should include a complete source citation, a photocopy of the report in which it appears (or will appear), and a reproduction-quality original drawing or photograph of the figure in question.



EDITOR'S CHOICE this month is a multiple choice. Several alternative descriptions of the accompanying photo are listed below.

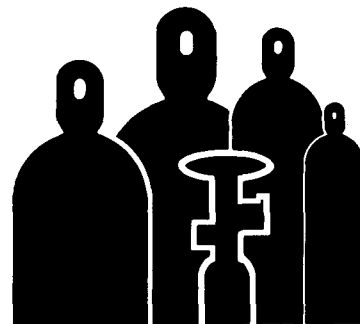
- None of the below,
- All of the below,
- A defective bean bag resting on spilled beans,
- A hamburger patty (with faceted onions) on a bed of charcoal,
- A capsized life raft run aground on a rocky reef,
- The business end of a glacier flow viewed end on,
- A weather balloon collapsed on its gondola on the reef of Choice (e),
- Melted and refrozen scoop of chocolate chip ice cream,
- A low-angle scanning electron micrograph showing the morphology of diamond deposited over a 24-hour period in a microwave plasma CVD ball reactor from a mixture of CH_4 (3%), CO (48.5%), and H_2 (48.5%), flowing at 20 standard cubic centimeters per minute under a pressure of 400 millibar onto a flat-topped conical relief (made by impression from the backside) on a molybdenum metal substrate held at 950°C , as has been described by H. Rau and F. Picht of Philips (Aachen) in *J. Mater. Res.* 7 (1992) p. 934-939.

Circle your choice on a photocopy of this page and return to EDITOR'S CHOICE. There are no prizes for the right answer, nor will a summary of results be published.

To submit candidate items for Editor's Choice, please send material to: Editor, MRS Bulletin, 9800 McKnight Road, Pittsburgh, PA 15237.

Voltaix

CVD GASES



DISILANE

Highest Purity Available, Anywhere
(>1500 ohm-cm)

Quality Control

- ◆ 100% GC / MS analysis

Packaging Options

- ◆ Any quantity, same spec.
- ◆ Steel, polished steel or aluminum cylinders
- ◆ Pneumatic valves for fail-safe gas supply
- ◆ Optional flow restrictor for added safety
- ◆ "Keyed" VCR outlet for UHV connection to system

Also of Interest

- ◆ Diborane
- ◆ Trimethylboron
- ◆ Germane
- ◆ Digermane
- ◆ All mixtures

Voltaix, Inc.

P.O. Box 5357, 197 Meister Ave.
N. Branch, New Jersey 08876
Telephone: (908) 231-9060
Facsimile: (908) 231-9063

Please visit Booth No. 609 at the MRS Equipment Exhibit/Table Top Displays in Boston, December 1-3, 1992.

Circle No. 18 on Reader Service Card.