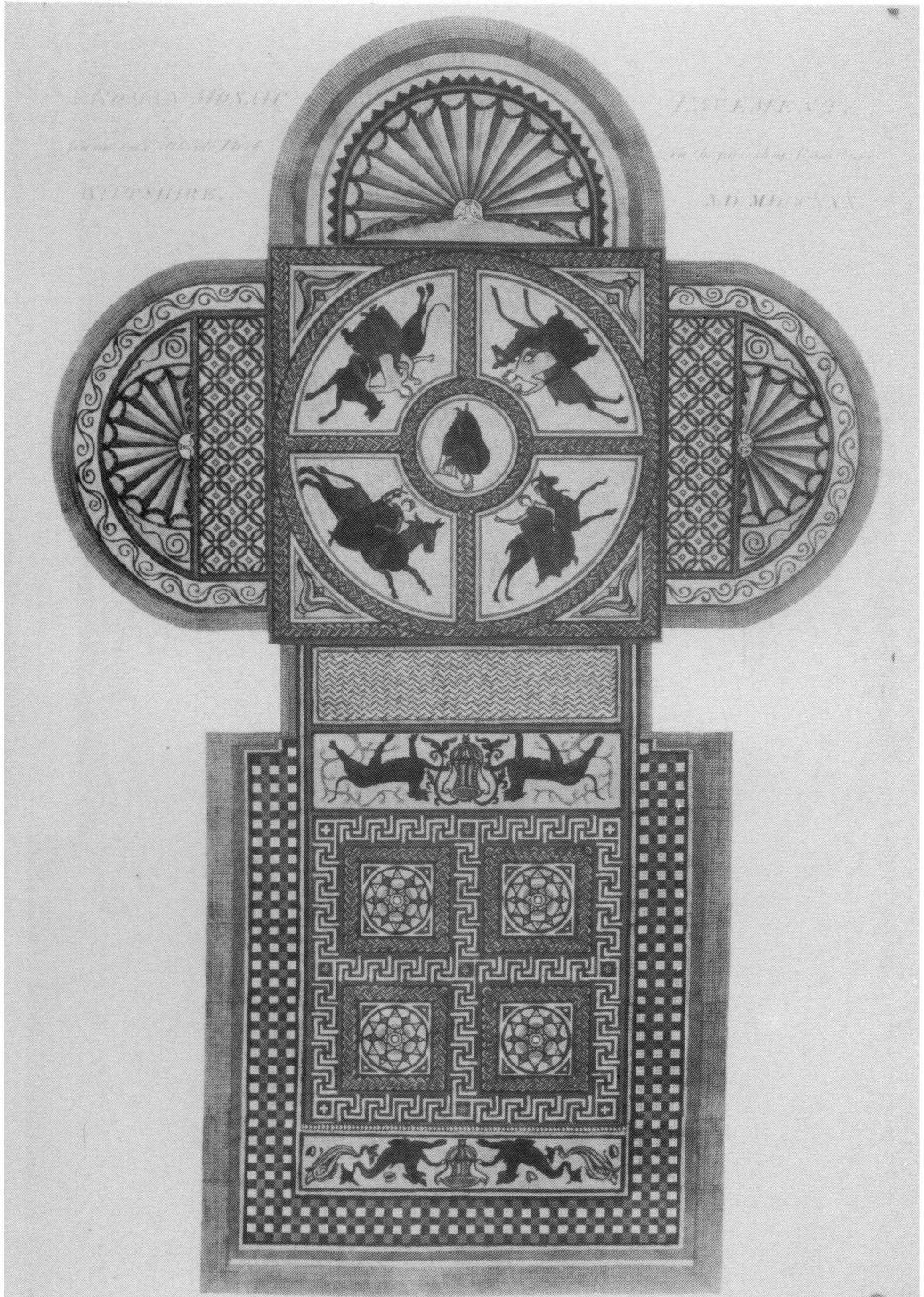


PLATE I



(Photo: M. B. Cookson)

Littlecote Park mosaic pavement, found in 1727; general view after Vertu's engraving (p. 1).

PLATE II



(Courtesy Bryn Walters)

Littlecote Park mosaic, detail of figure in central roundel (p. 2).

PLATE III



(Courtesy British Museum)

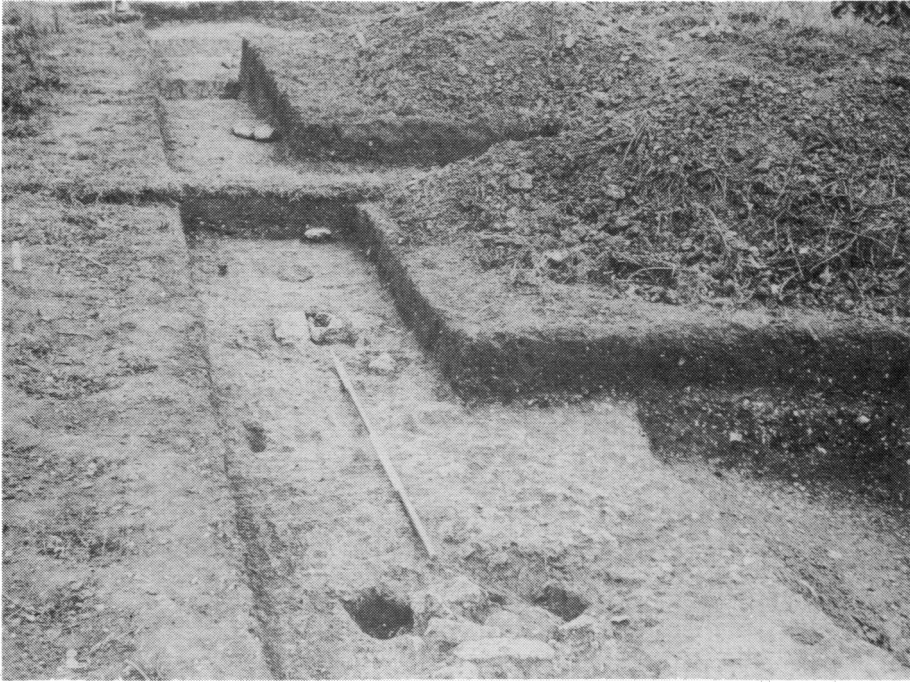
B. Summer and Autumn on silver *situla* from Tourdan, Gaul (p. 4).



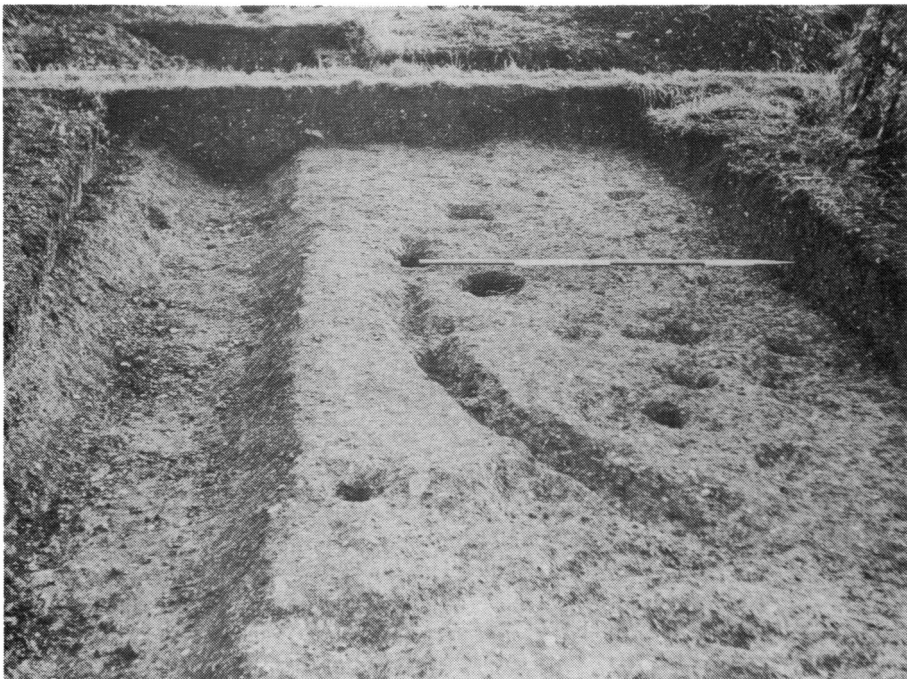
(After Wegner)

A. Apollo on Muses sarcophagus, S. Paolo fuori le Mura (p. 2).

PLATE IV



A. Brockworth: Post-holes 1, 2 and others in line; Ditch 1 on right (p. 48).



B. Brockworth: Circular Gully 2, showing entrance and post-holes; Ditch 9 on left (p. 48).

PLATE V



*(Cambridge University Collection: copyright reserved)*

**A. Grandford, looking S., before ploughing; compare with FIG. 4 (p. 85).**



*(Cambridge University Collection: copyright reserved)*

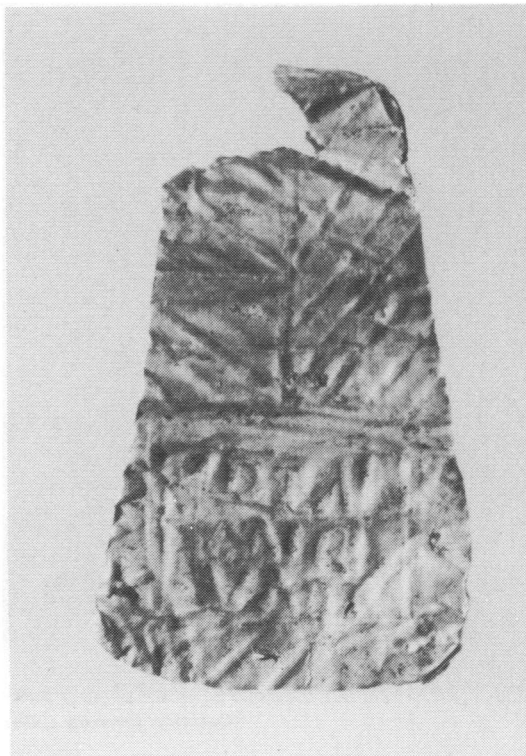
**B. Grandford, looking N., after ploughing; compare with FIG. 4 (p. 85).**

PLATE VI



(Photo: British Museum)

A. Stonea: bronze bust depicting Minerva; Wisbech Museum collections. Scale 1:1 (p. 99).



(Photo: British Museum)

B. Stonea: gold votive plaque, probably dedicated to Minerva; length 35 mm (p. 99).

PLATE VII



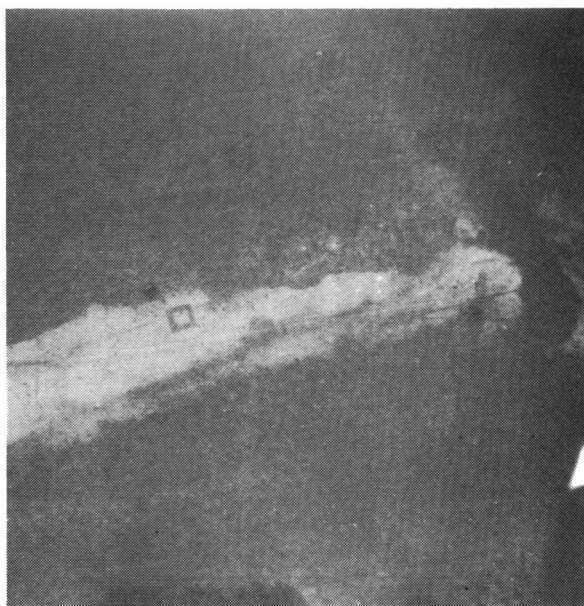
*(Cambridge University Collection: copyright reserved)*

Norwood, looking N.: (a) the West Water; (b) the excavations of the saltern sites. Compare FIG. II (p. 104).

PLATE VIII



A. Destruction of Fen Causeway in the peat Fen between Whittlesey and March, c. 1905. Note a fragment of the timber corduroy beneath the road make-up (p. 131).



*(Cambridge University Collection: copyright reserved)*

B. The Cardurnock Peninsula: Tower 2B and surrounding features; compare with FIG. 1 (p. 138).

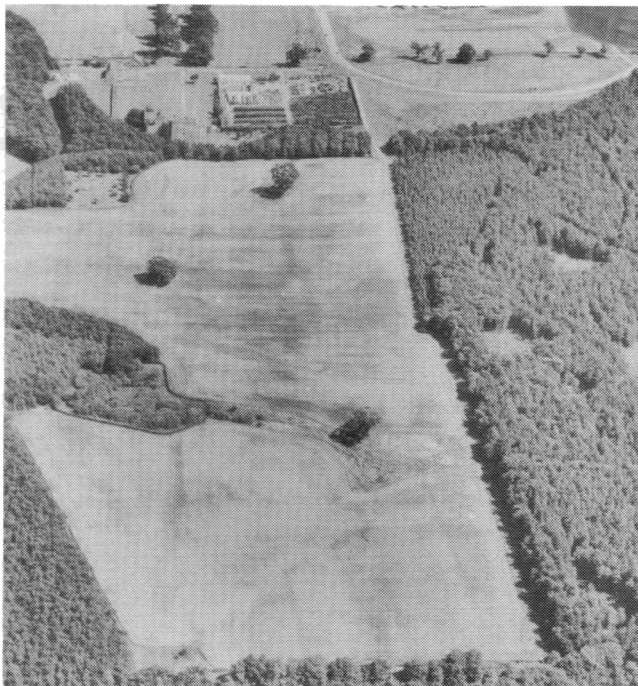


PLATE IX



*(Cambridge University Collection: copyright reserved)*

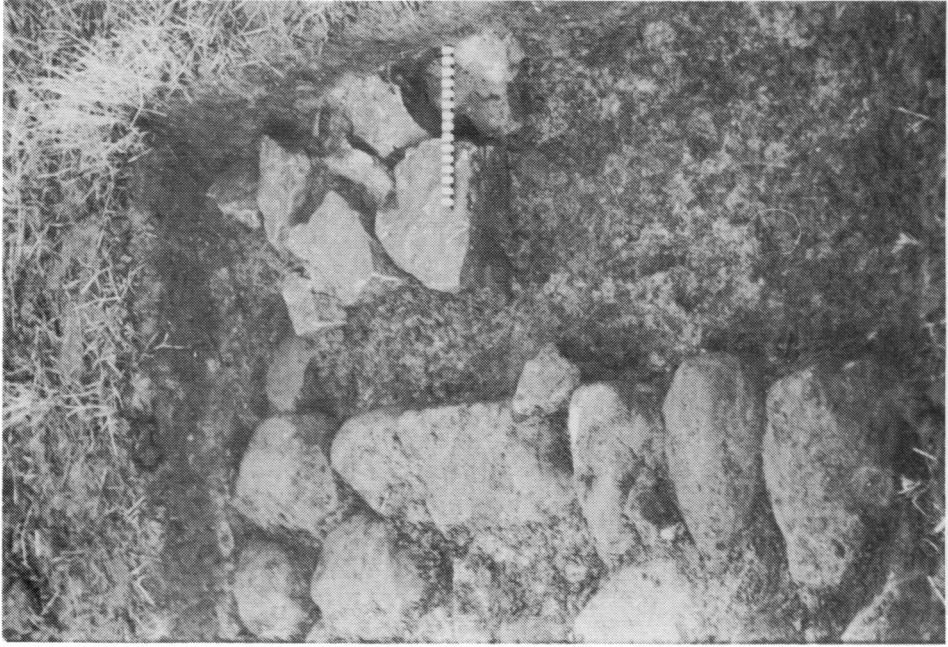
- **A. Seabegs Wood:** aerial view from the NW. The Antonine Ditch can be seen emerging from the Wood and continuing as a cropmark in the field to the W. (p. 143).



*(Cambridge University Collection: copyright reserved)*

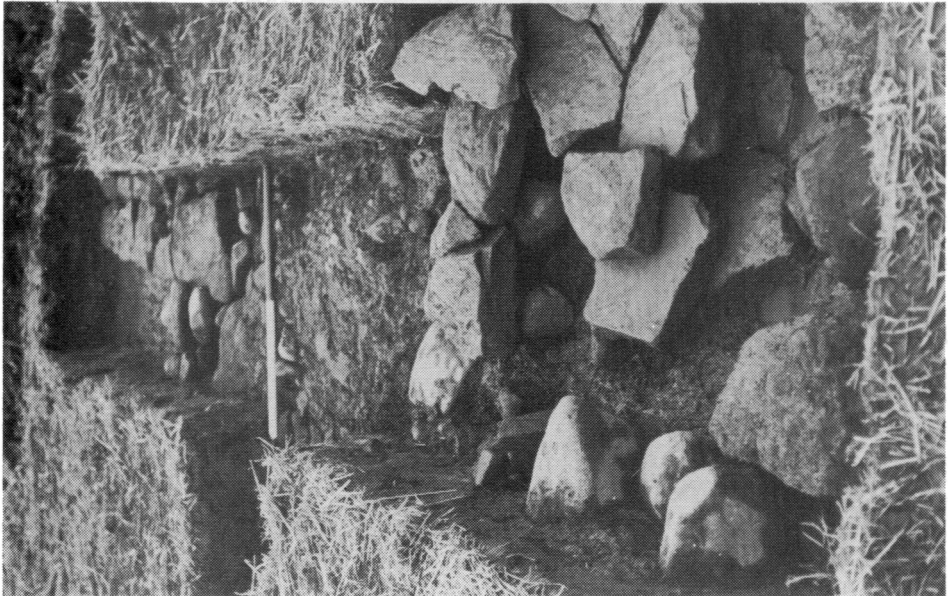
- B. Kinneil:** aerial view from the W. Kinneil House lies in the background, and the Antonine Ditch running E—W is clearly visible. The fortlet occupies a knoll in the field nearest the camera (p. 150).

PLATE X



(Photo: L. J. F. Keppie)

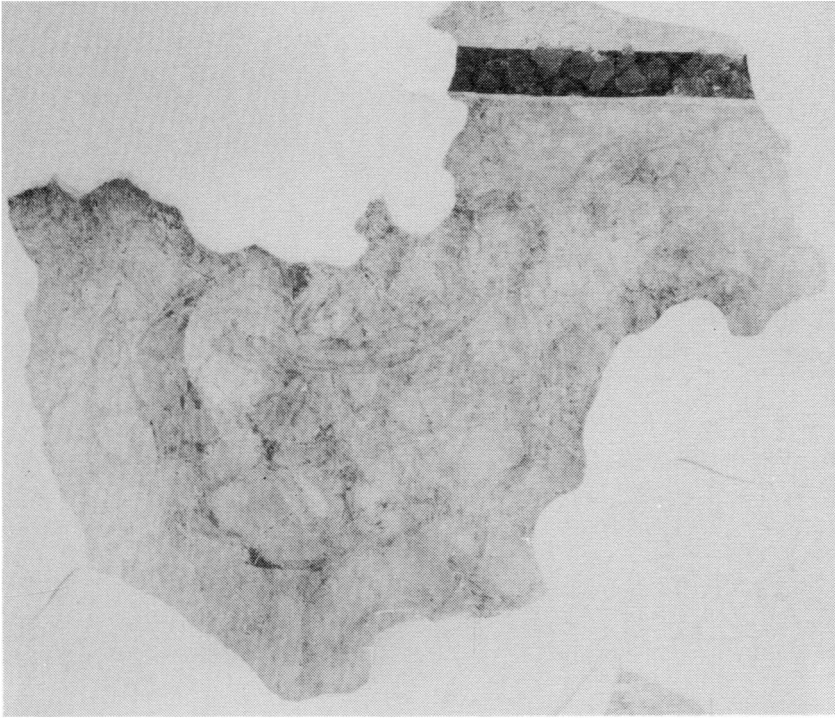
B. Cleddans: junction of the Antonine Wall with fortlet rampart, NE corner, looking N. (p. 155).



(Photo: L. J. F. Keppie)

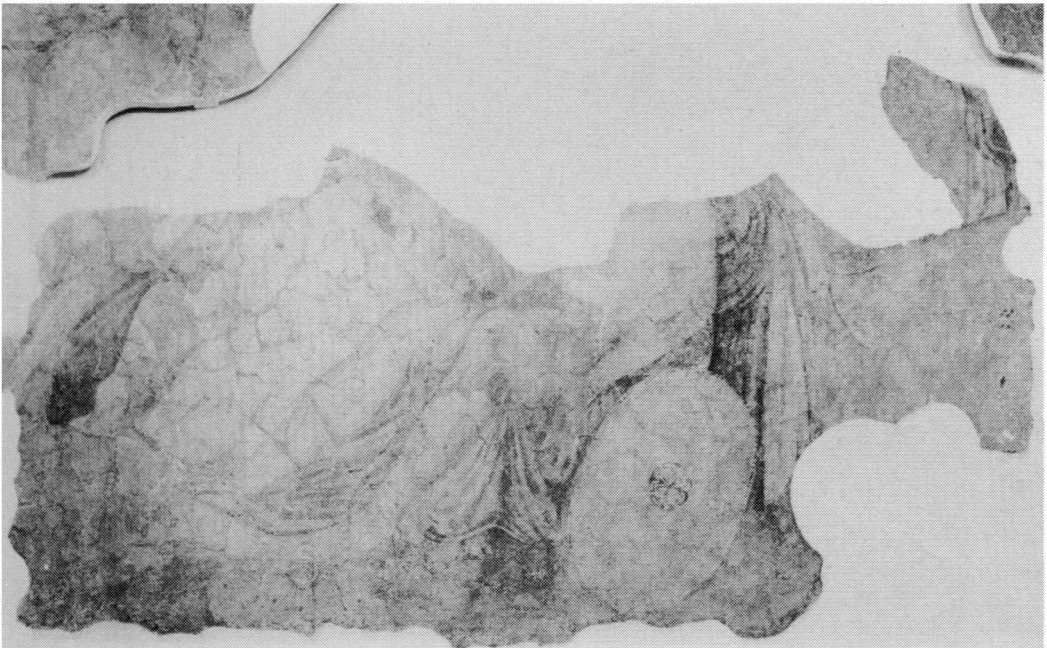
A. Kinneil: N. gateway and culvert, looking W. (p. 151).

PLATE XI



*(Photo: H. Eristov)*

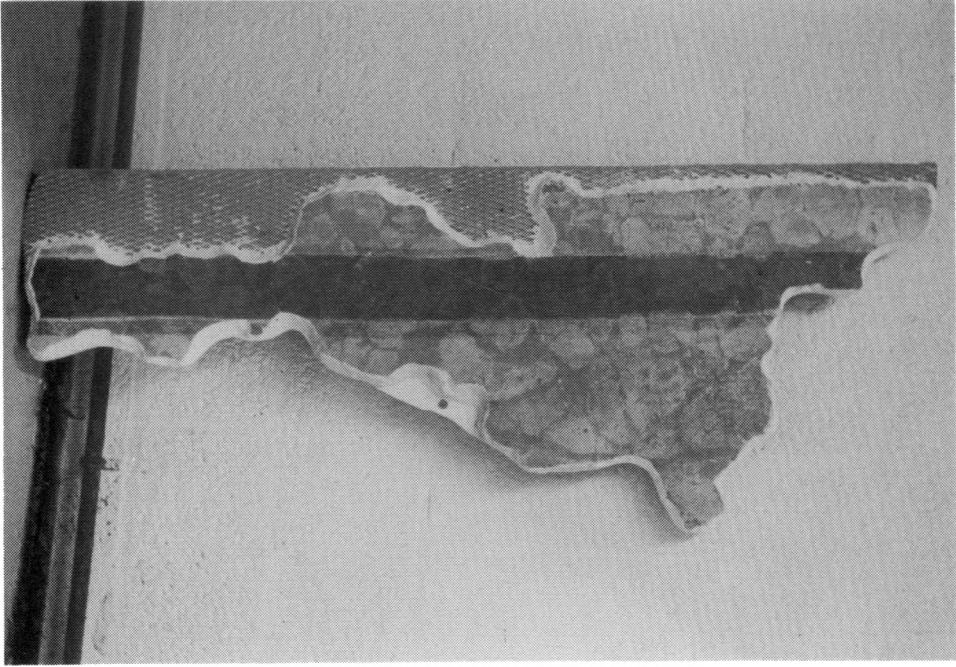
**A. Kingscote wall paintings: nimbed figures and upper part of Cupid (Area A) (p. 167).**



*(Photo: H. Eristov)*

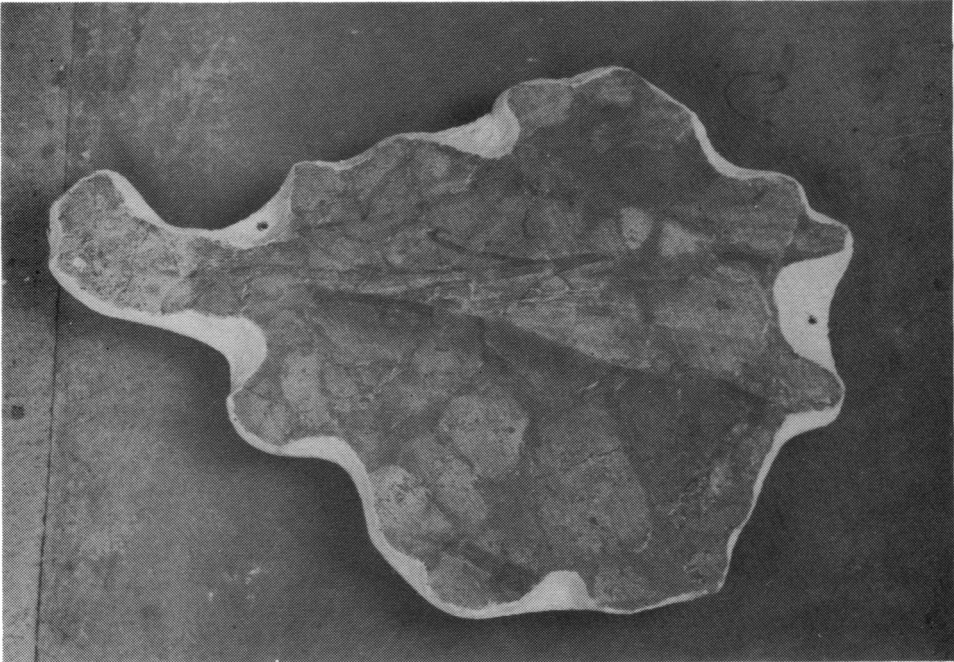
**B. Kingscote wall paintings: legs of Cupid and seated figure with shield (Area B) (p. 167).**

PLATE XII



(Photo: R. J. Ling)

B. Kingscote wall paintings (Area D) (p. 167).



(Photo: R. J. Ling)

A. Kingscote wall paintings: torso of reclining (?) figure (Area C) (p. 167).

PLATE XIII



*(Photo: Chris Bowler)*

**A. Kingscote wall paintings: leg of seated figure (Piece X) (p. 167).**



*(Photo: N. Davey)*

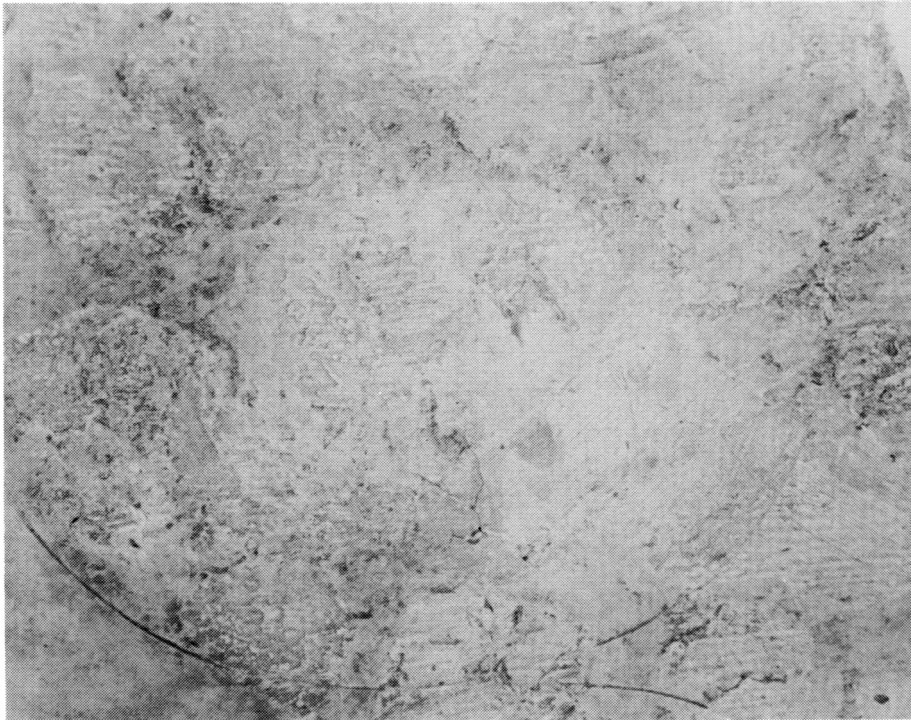
**B. Kingscote wall paintings: detail of restored plaster showing fresco technique (p. 167).**

PLATE XIV



(Photo: Kingscote Archaeological Association)

B. Kingscote wall paintings: head of Cupid (p. 168).



(Photo: Kingscote Archaeological Association)

A. Kingscote wall paintings: head of right-hand nimbed figure (p. 168).

PLATE XV



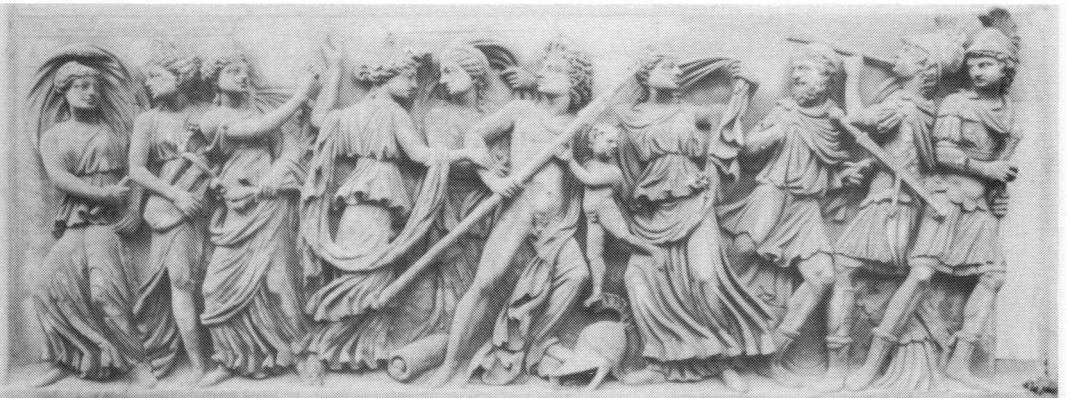
*(Photo: Alinari)*

**A. Psyche picking flowers: detail of painting in House of the Vettii at Pompeii (p. 169).**



*(Photo: German Archaeological Institute, Rome)*

**B. Achilles on Scyros: sarcophagus in Rome, Terme Museum (Inv. 115173) (p. 170).**



*(Photo: German Archaeological Institute, Rome)*

**C. Achilles on Scyros: sarcophagus in Vatican Museum (p. 170).**

PLATE XVI



(Photo: E. Schulz, Basel; courtesy of Römermuseum, Augst)

B. Silver dish from Kaiseraugst, now in Augst, Römermuseum (p. 170).

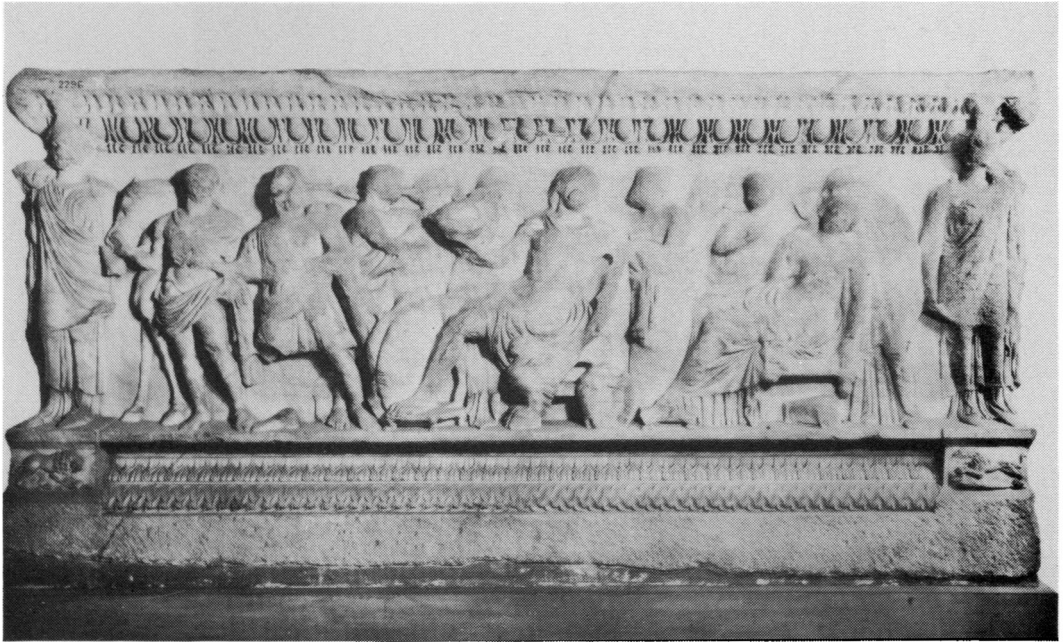


(Photo: A. Carliotti)

A. Achilles on Scyros: painting from the House of the Dioscuri in Pompeii (now in Naples National Museum), c. A. D. 62–68 (p. 170).

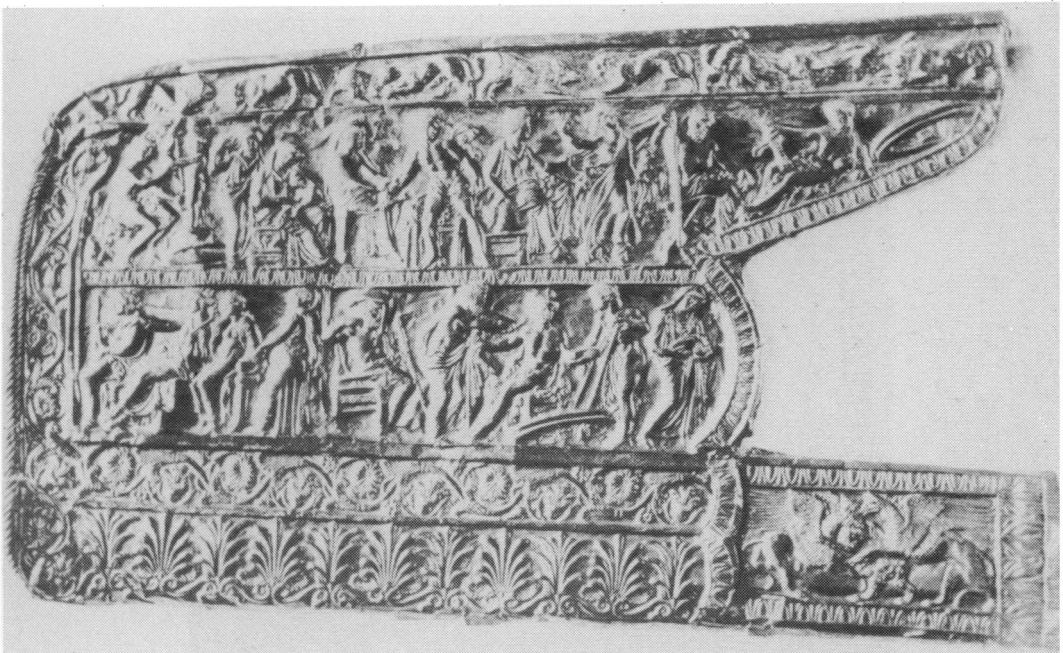


PLATE XVII



(Photo: British Museum)

A. Achilles on Scyros: sarcophagus from Crete, British Museum (p. 170).



B. Late fourth-century B.C. bronze *gorytus* from Tchertomlysk, Hermitage Museum, Leningrad (p. 171).

PLATE XVIII



*(National Monuments Record Air Photograph: Crown Copyright Reserved)*

**<sup>4</sup> A. Bradley Hill from the N., with excavation in progress, top left-hand corner (p. 177).**



**B. Bradley Hill: Building 1, looking W. (p. 182).**

PLATE XIX

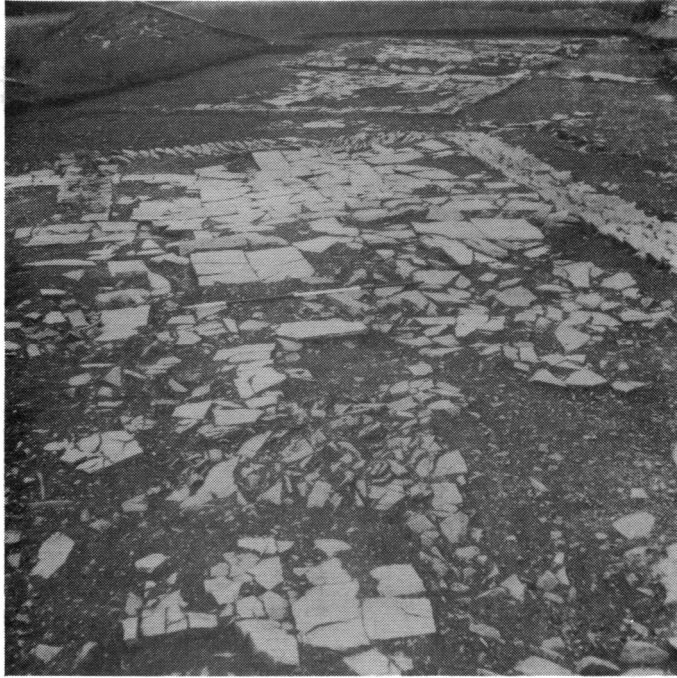


**A. Bradley Hill: Building 1, Room 1, showing collapsed wall F2 and Room 2 in background, looking SE (p. 182).**



**B. Bradley Hill: Building 1, Room 2, showing original SE corner, looking S. (p. 183).**

PLATE XX

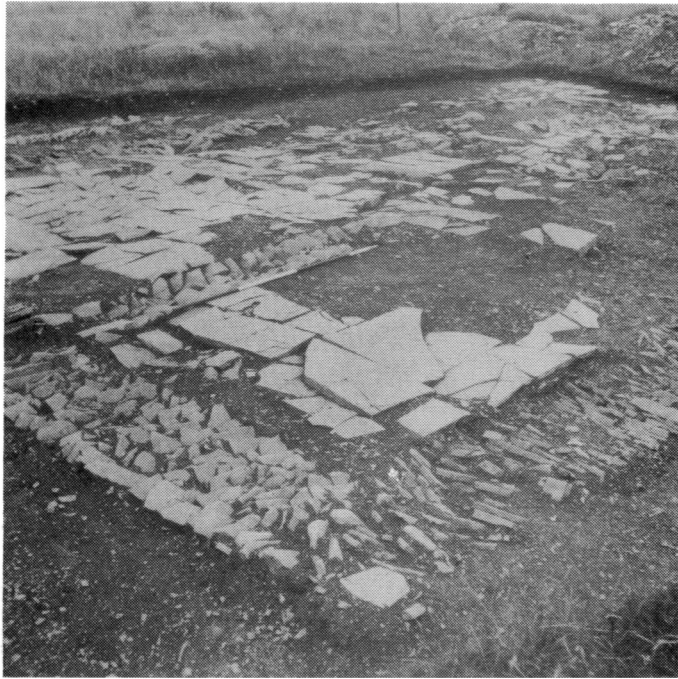


A. Bradley Hill: Building 2, Room 1, looking E. (p. 185).



B. Bradley Hill: Building 2, Room 1, Ham Stone slab F39 (p. 185).

PLATE XXI

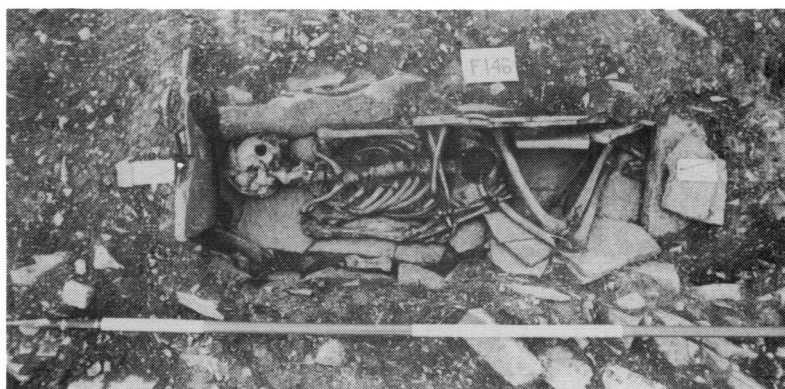
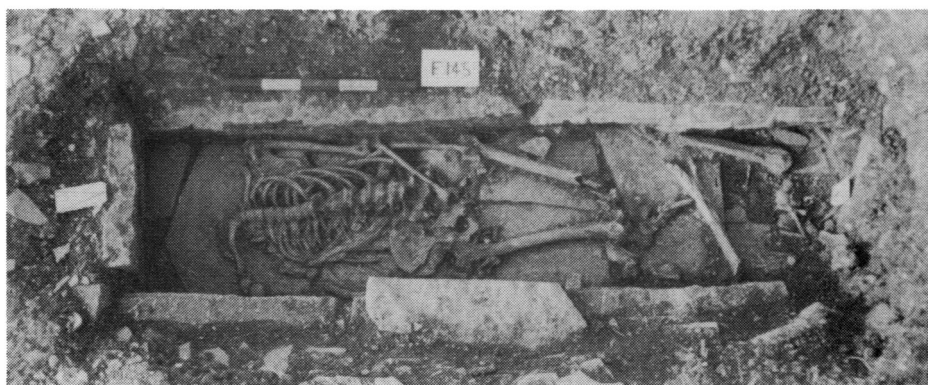


A. Bradley Hill: Building 2, Rooms 2 and 3, looking SW (p. 185).



B. Bradley Hill: Building 3, burial F110 (p. 189).

PLATE XXII



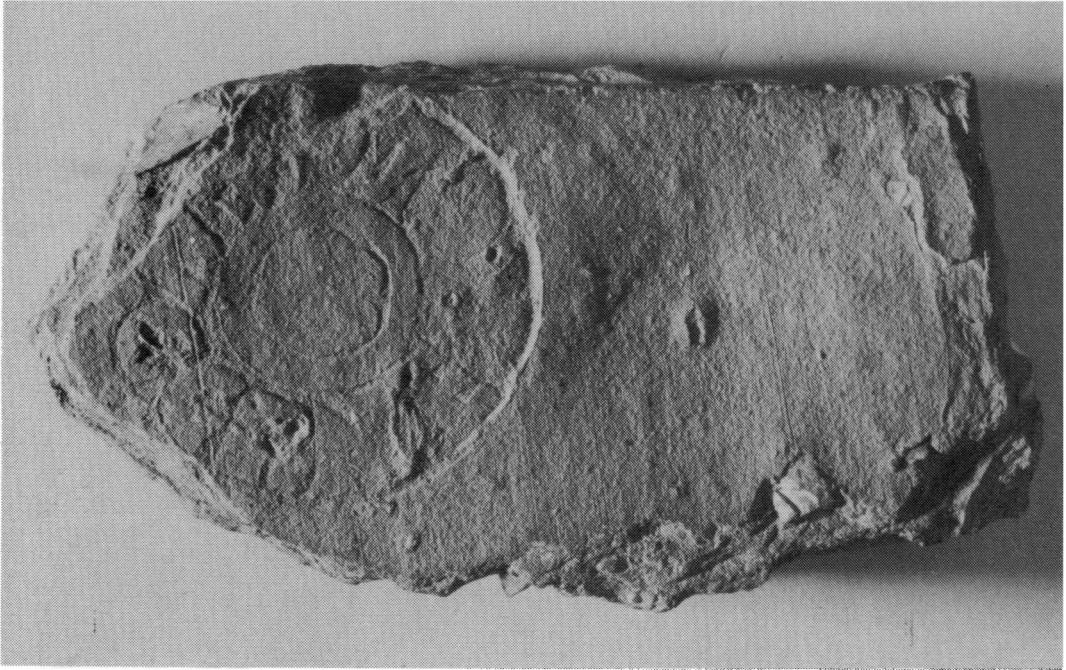
Bradley Hill: burials; all aligned E—W (p. 193).

PLATE XXIII



Bradley Hill: part of the cemetery to S. of Building 3, looking SE (p. 193).

PLATE XXIV



(Photo: British Museum)

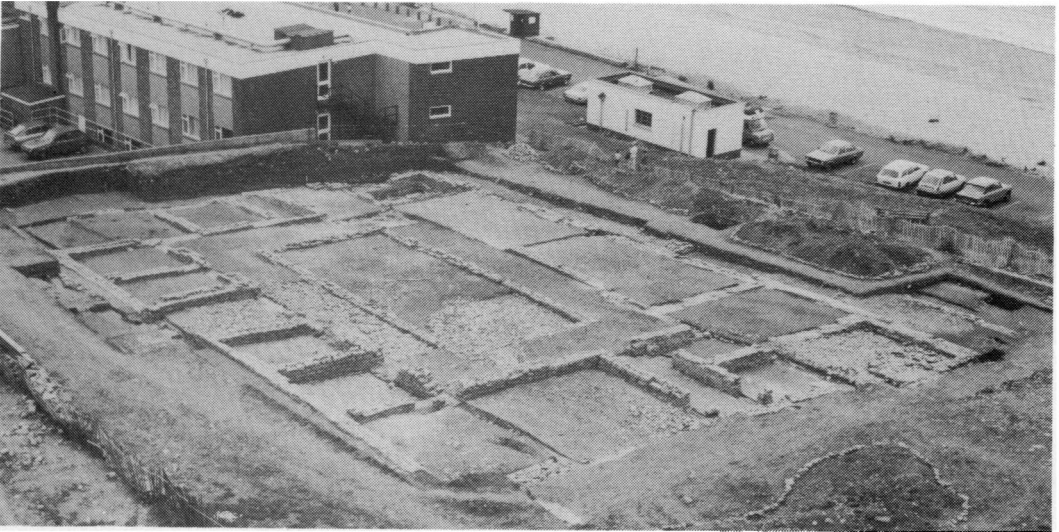
A. Neronian stamped tile from Little London (p. 290).



B. Roman and Medieval pottery from Lincoln, 1848 (from *Illustrated London News*): moneybox is No. 3, top right (p. 304).

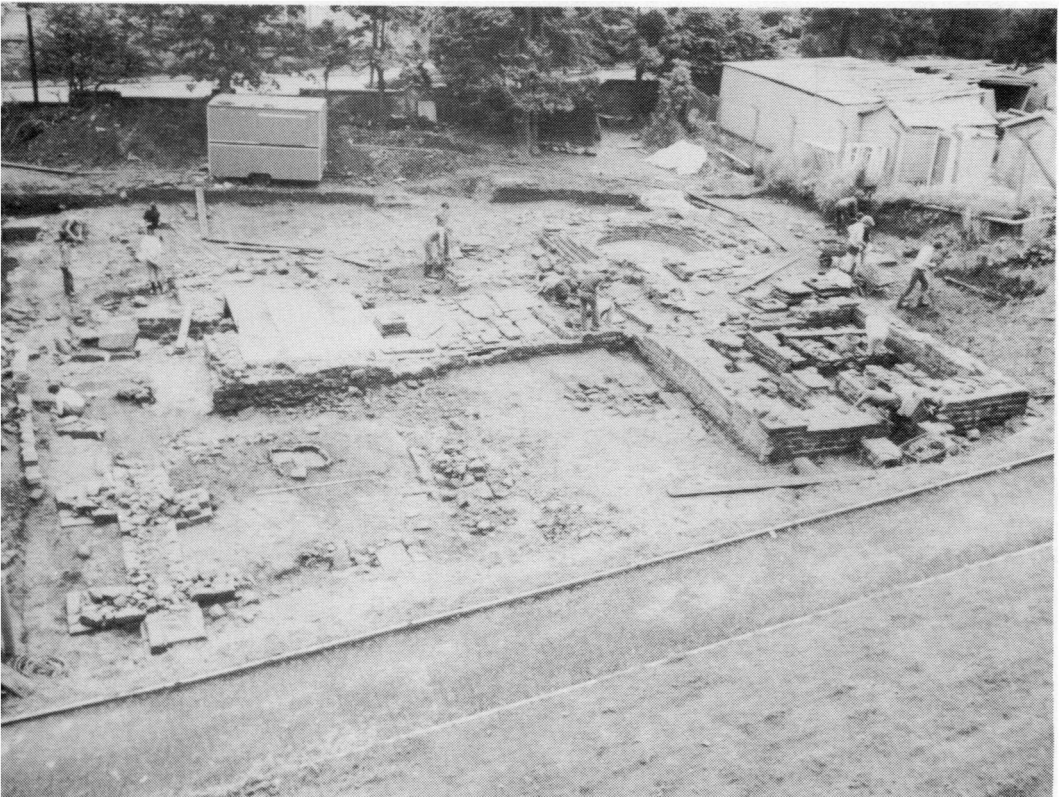


PLATE XXV



*(Photo: W. Lewis)*

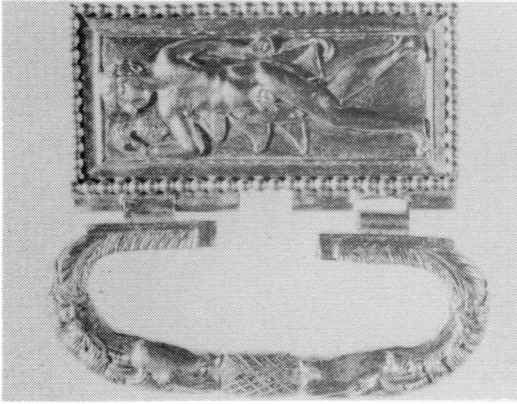
**A. Cold Knap, Barry: the Roman building viewed from the NW, towards the Bristol Channel (p. 316).**



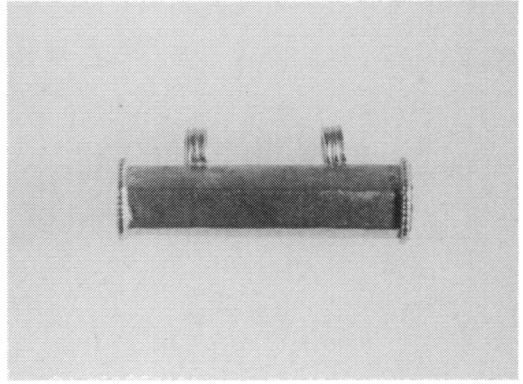
*(Photo: Scottish Development Department, Ancient Monuments; Crown Copyright)*

**B. Bearsden: the bath-house looking S. In the left foreground is the unfinished heated room before excavation of the robber-trenches; the latrine lies at the top left (p. 321).**

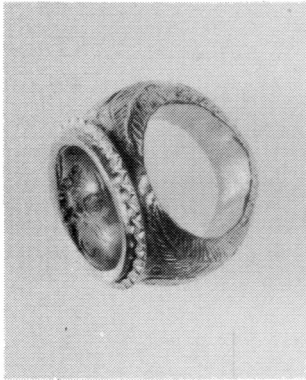
PLATE XXVI



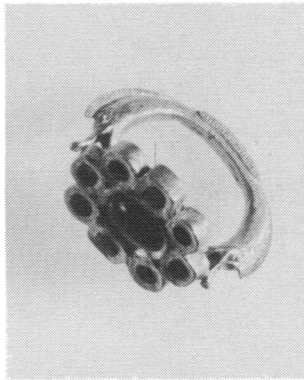
A



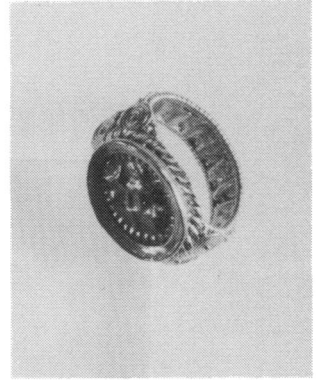
B



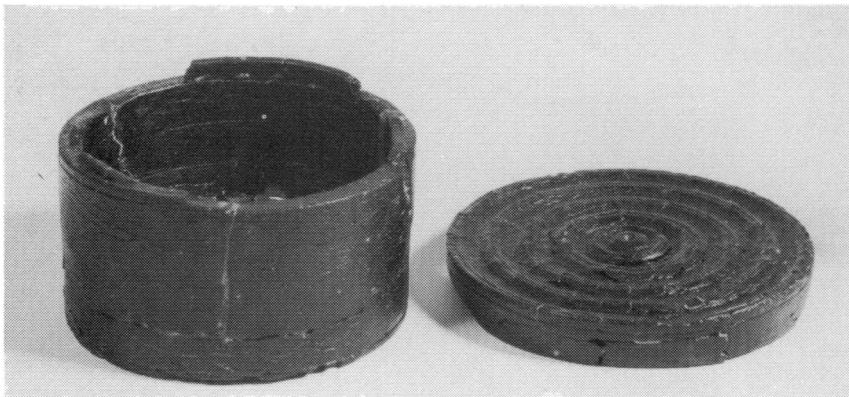
C



D



E



F

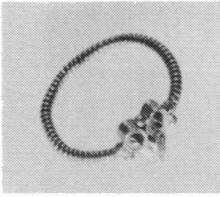
(British Museum Copyright)

The Thetford Treasure (p. 347): A. Gold buckle, the rectangular plate ornamented with a satyr and the bow decorated with confronted horses' heads. B. Gold amulet in the form of a tube, hexagonal in section, with two suspension-rings. C. Gold ring with leaves engraved on the shoulders and set with an amethyst depicting a cupid riding a lion. D. Gold ring, the shoulders in the form of dolphins' heads. The central gem is an amethyst, the others garnets and emeralds alternately. E. Gold ring with clasped hands in relief on the bezel, filigree ornament on the shoulders and 'basket work' on the hoop. F. Shale jewellery box. Scale, 1:1 (except F, 1:2)

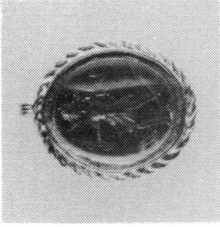
PLATE XXVII



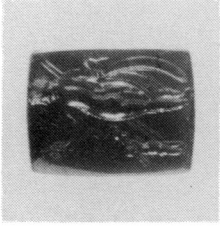
A



B



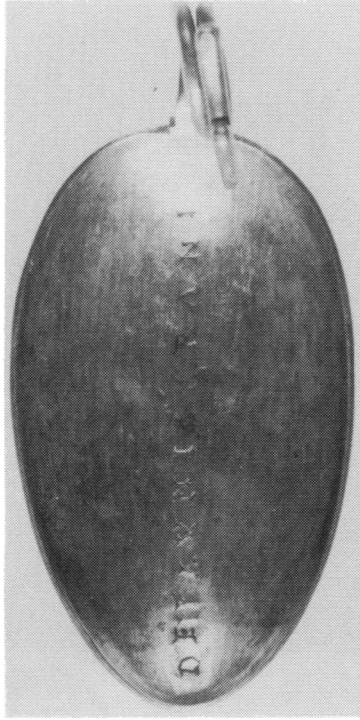
C



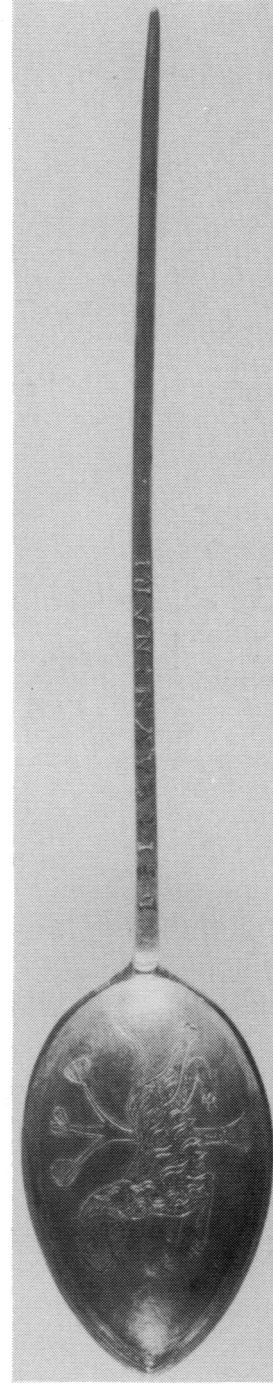
D



E



F

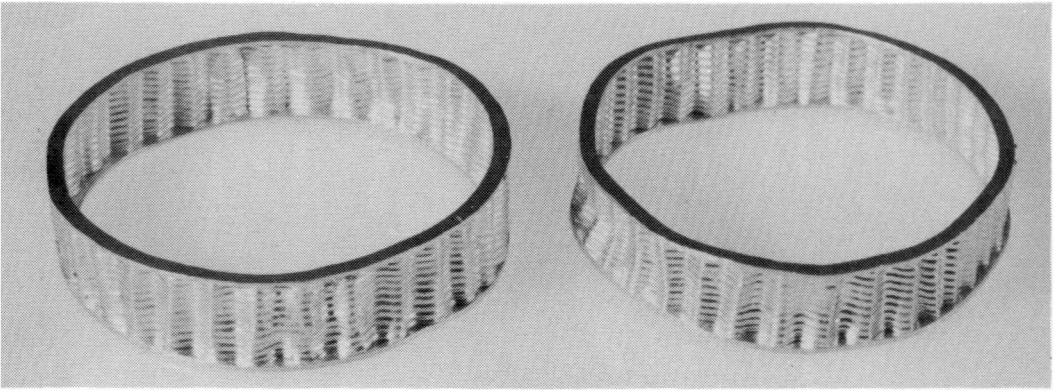


G

The Thetford Treasure (p. 347): A. Gold ring with beaded hoop, the bezel set with green glass inlaid in gold with four petals. B. Gold ring with ribbed hoop, the bezel in the form of a Pan's mask, set with two garnets. C. Agate pendant engraved with Diana and a hound, set in a gold mount. D. Unmounted cornelian engraved with Venus and Cupid with armour. E. Silver spoon with parcel-gilt bowl depicting a Triton and inscribed DEINARI. F. Silver spoon with niello inscription DEIFAVNI CRANI in the bowl. G. Silver spoon with parcel-gilt panther engraved in the bowl and niello inscription DEIFAVNINARI on the handle. Scale, 1:1.

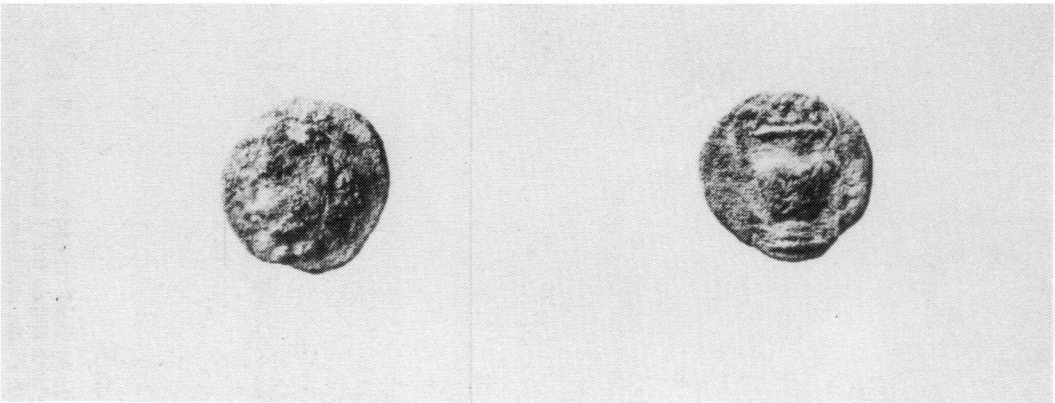
(British Museum Copyright)

PLATE XXVIII



*(British Museum Copyright)*

A. The Thetford Treasure: pair of gold bracelets in basket pattern (p. 347). Scale 1:1.



*(Photo: R. Wilkins and N. Pollard)*

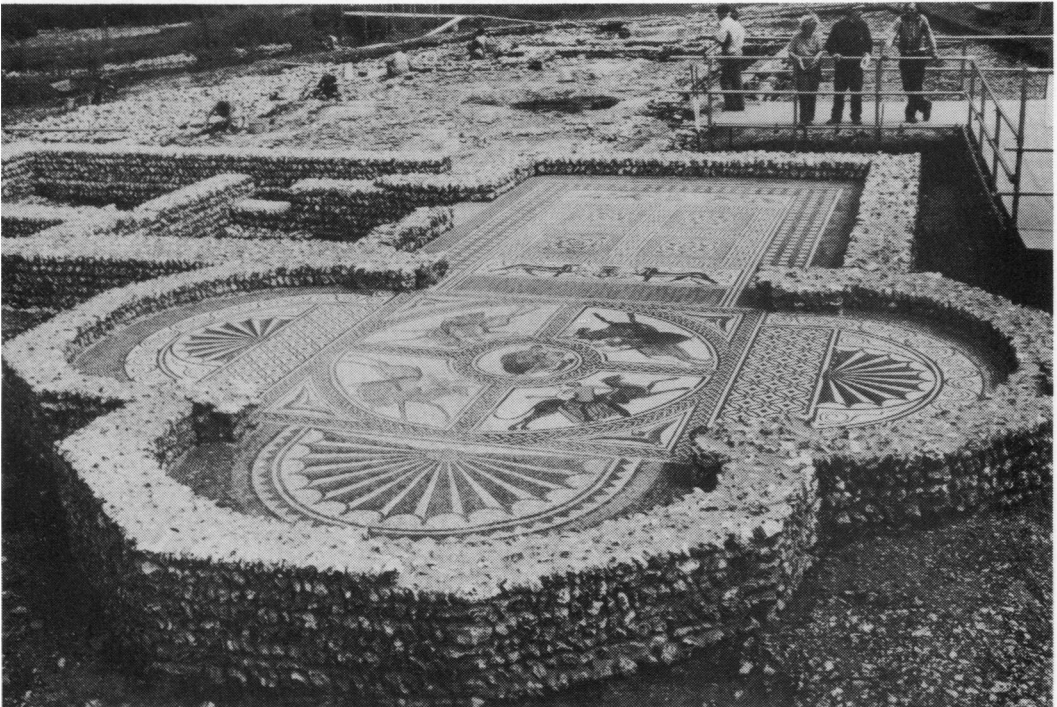
B. Kelling, Norfolk: third-century B.C. bronze coin of Corcyra (p. 347). Scale, 2:1.

PLATE XXIX



(Photo: W. Rodwell)

A. Wells: the late Roman mausoleum beneath the Anglo-Saxon buildings in the Cathedral Close (p. 358).  
Scale in feet.



(Photo: B. Walters)

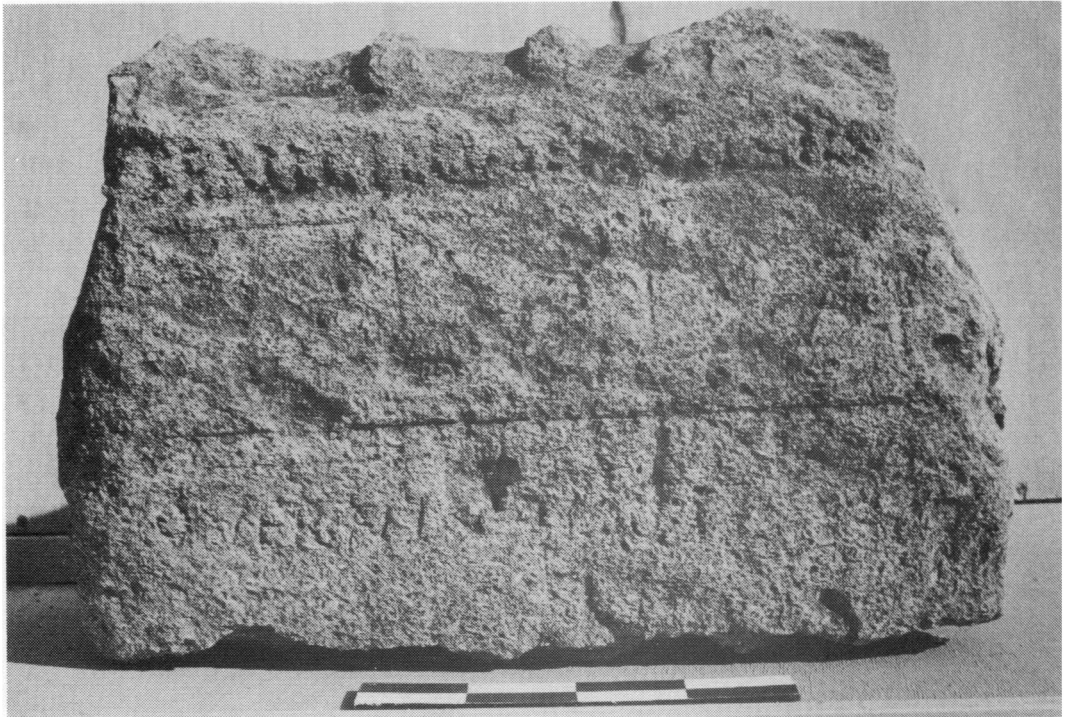
B. Littlecote Park villa: Site 2 in 1980 viewed from the NW with the restored Orpheus mosaic in the foreground (p. 361).

PLATE XXX



(Photo: Wimborne Archaeological Group, copyright reserved)

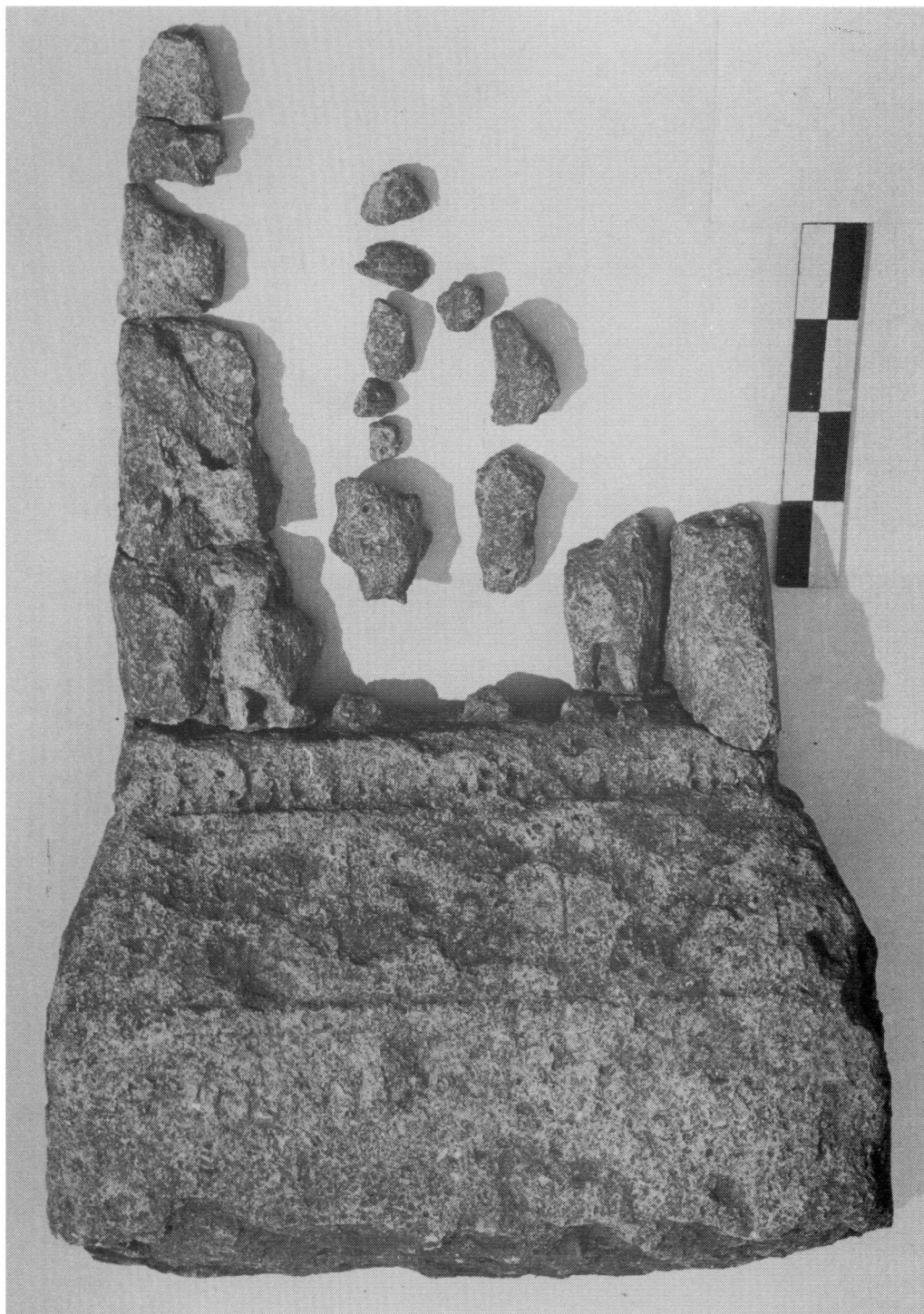
A. Tarrant Hinton, Hants.; funerary inscription (p. 369, No. 4). Actual length is 0·44 m.



(Photo: Sebastian P. Q. Rahtz)

B. Uley Gos.; inscribed altar base (p. 370, No. 5). Scale is 20 cm.

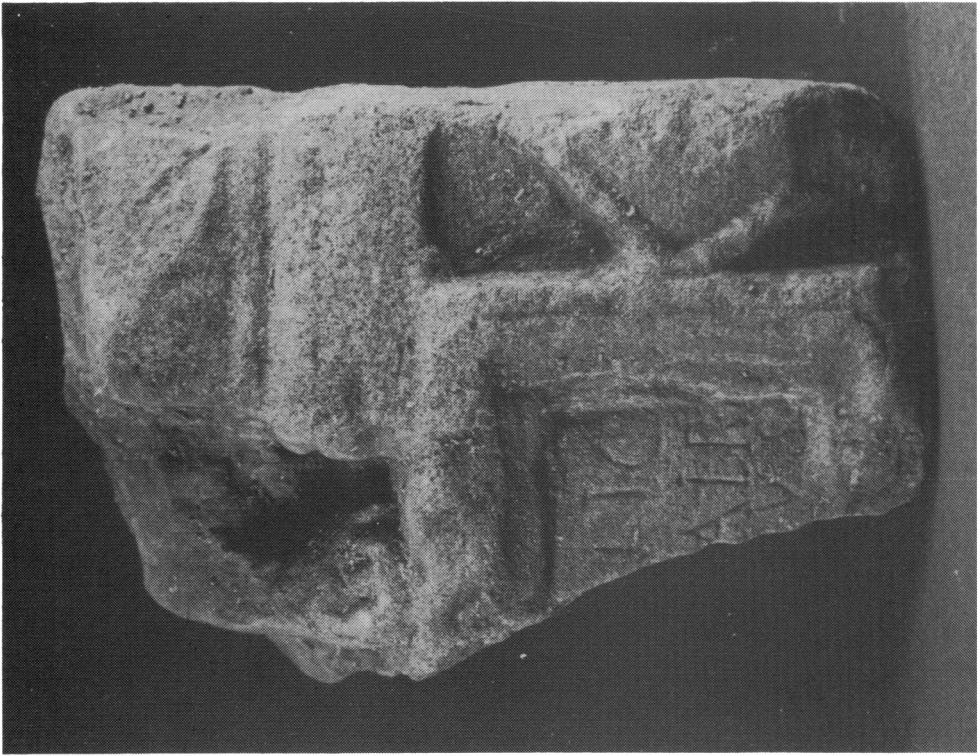
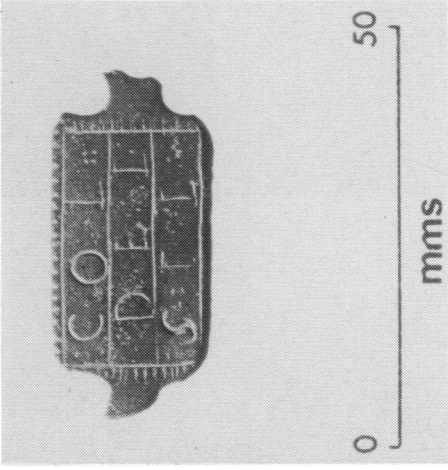
PLATE XXXI



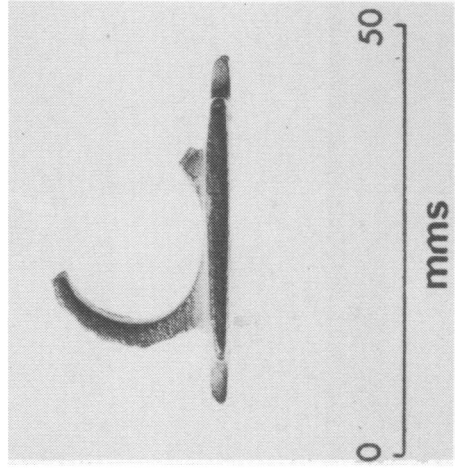
*(Photo: Sebastian P. Q. Rahtz)*

Uley Glos.; inscribed altar base (p. 370, No. 5). Scale is 20 cm.

PLATE XXXII



(Photo: Carlisle Archaeological Unit)  
A. Carlisle, Cumbria; fragment of sculptured relief (p. 379, No. 13). Actual height is 0.15 m.



(Photo: Museum of London)  
B. Wendens Ambo, Essex, bronze ring (p. 384, No. 36).