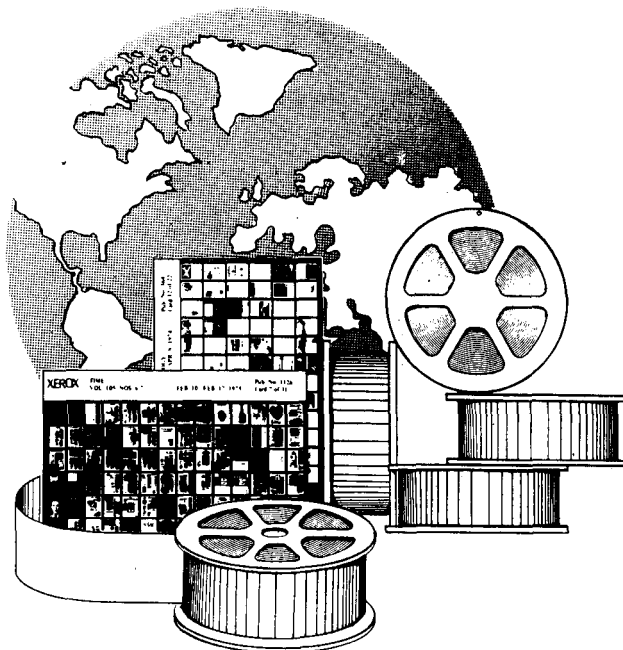


# This Publication is Available in MICROFORM

FOR INFORMATION  
WRITE:  
Dept. FA.



## University Microfilms International

300 North Zeeb Road  
Ann Arbor, Mich. 48106  
U.S.A.

18 Bedford Row  
London, WC1R 4EJ  
England

Choose with confidence

# Dodson Bull

Discount and Service to members since 1961

## CARPETS-FURNITURE-FABRICS

# 15% TO 33 1/3% DISCOUNT

In the Barbican Furnishing Centre we have a comprehensive range of carpets, furniture and fabrics by all leading manufacturers, on display in room settings. All our showrooms have a wide range of carpets on show—in addition Bristol and Manchester have furniture showrooms. All goods can be obtained from any branch. Just discuss your requirements with the manager—he will be pleased to help. We maintain substantial stocks for immediate delivery—free of charge—anywhere in the U.K. Full fitting service for carpets throughout the country.

**PERSONAL EXPORT SCHEME**  
Goods may be shipped in bulk  
or to individual requirements  
—anywhere in the world!

**ABERDEEN:** 11 Exchange St., AB1 2NH. Tel: 54055/6  
**BIRMINGHAM:** 164 Edmund St., B3 2HB. Tel: 021-236 5862  
**BOURNEMOUTH:** 268 Old Christchurch Rd., BH1 1PH. Tel: 21248  
**BRIGHTON:** 2-5 North Road, BN1 1YA. Tel: 68402  
**BRISTOL:** 2-3 Royal London Hse., Queen Charlotte St., BS1 4EX. Tel: 28857  
**EXETER:** 157 Fore St., EX4 3AT. Tel: 32019  
**FALMOUTH:** 35 Killigrew St., TR11 3PW. Tel: 313555  
**GLASGOW:** 166 Howard St., G1 4HA. Tel: 041-221 3278  
**LEEDS:** 12 Great George St., LS1 3DW. Tel: 41451  
**LONDON:** 100 Aldersgate St., EC2Y 8AE. Tel: 01-628 7020  
**MANCHESTER:** 55-61 Lever St., M1 1DE. Tel: 061-236 3687/8/9  
**NEWCASTLE-upon-TYNE:** 90-92 Pilgrim St., NE1 6SG. Tel: 20321/21428  
**WESTCLIFF-on-SEA:** 495 London Rd., SS0 9LG. Tel: Southend 46569

Write, phone or call for details to Dept. RAS

## Dodson Bull Ltd

Hours: Mon. to Fri. 9.00 - 5.30  
Sat. 9.00 - 5.00 (London only)  
BRANCHES CLOSE SATURDAYS at 12.30pm

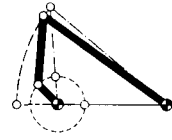
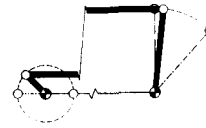
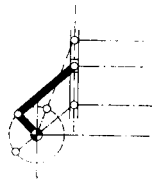
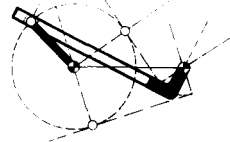
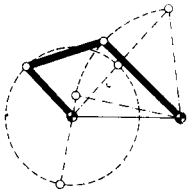
Barbican Furnishing Centre (Opposite Barbican Underground Stn.)  
100 Aldersgate Street, London EC2Y 8AE Telephone: 01 628 7020

publications of  
**THE ROYAL AERONAUTICAL SOCIETY**  
4 Hamilton Place - London - W1V 0BQ - England  
01-499 3515-9

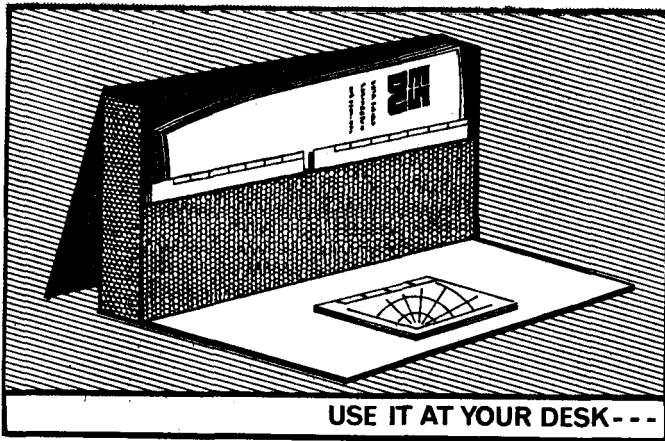


# four-bar linkages

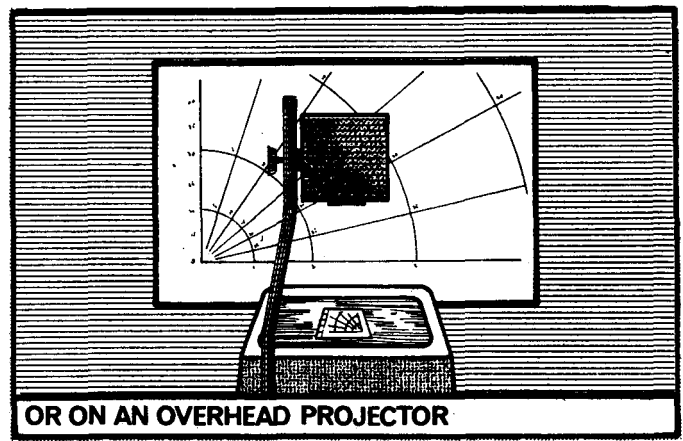
Item No. 76005 (ME1)



Kinematic and dynamic data for crank-rocker and slider-crank linkages



USE IT AT YOUR DESK---



OR ON AN OVERHEAD PROJECTOR

## Between the sketch and the successful design— you need ESDU Data Items

Design engineers need accurate, reliable information on which to base their designs and specifications. But much of the information available in essential areas is conflicting. Values for vital parameters such as pressure drops or stress concentrations in one source often differ widely from those in another.

Unless you choose the *best* values, you risk over-specifying materials and dimensions, with consequent cost penalties. Or you may under-specify, which could lead to unscheduled stoppages and breakdowns.

Engineering Sciences Data Unit can help you get things right, first time.

ESDU produces thoroughly evaluated and authoritative engineering design data in

aeronautical, chemical, mechanical and structural engineering. Committees of practising engineers and scientists monitor and guide qualified ESDU staff who sift and evaluate all the available data on each topic. Sometimes hundreds of separate references are involved.

ESDU issues the results of this work as Data Items in which information is presented in a way best suited to the engineer. Graphs, tables, flow charts, equations and presentation in both British and SI units are all combined to help you to get your design and specifications drawn up precisely and accurately.

ESDU's work is sponsored by the Institutions of Chemical, Mechanical and Structural Engineers and by the Royal Aeronautical Society.

Users of ESDU Data Items may become Associates of ESDU. As an

Associate, you would be entitled to a range of valuable services. If you want to know more about ESDU and the wide range of data always available, contact us for full details.

For all your sales enquiries, write or phone:

Engineering Data Sales Limited  
34 Haymarket  
London SW1Y 4HZ  
United Kingdom  
01-839 3002



Telex Endasa London 916168



# DECCA AVIONICS

The British Ministry of Defence has chosen the new Decca Doppler 80 system and Automatic Chart Display to be the navigation system for British Army Westland/Aerospatiale Gazelle helicopters.

The contract, which has recently been signed, is worth over £2 million and provides for the equipping of more than 190 aircraft.

A number of overseas governments are showing keen interest in the Doppler 80 system and it is

believed that there is considerable export potential for it.

The basic Decca Doppler 80 system comprises a lightweight Doppler Radar with Position Bearing and Distance Indicator (PBDI). The Automatic Chart Display chosen by MOD is an additional system option.

The choice of the new Doppler 80 system follows the success of the Decca Doppler 70 series. Production of the 70 series Doppler now exceeds 1,000 units. The equipment has been

fitted to some 86 different types of fixed and rotary winged aircraft and is used by 45 different nations.

The Doppler 80 system has been designed specifically as a complementary system to the 70 series and will meet the operational requirements of small helicopters where cost, size, ease of installation and light weight are of paramount importance.



A Decca Doppler 80 equipped Westland/Aerospatiale Gazelle helicopter.



The Decca Navigator Company Limited  
9 Albert Embankment London SE1 7SW

