

# There are 1001 electron microscopy applications. There is one company ready to respond to any one of them.

You name it. We've got it. The perfect electron microscopy solution. For biological, geological and new-materials research. For industries ranging from semiconductor to food, textile to pharmaceutical. For R&D and QA. For laboratories and high-production environments.

We're talking Hitachi's unmatched product-line breadth—and depth. From the world's highest-resolution SEM to a super-affordable SEM that sacrifices nothing in high-end features. From STEMs with the operational simplicity of a SEM to CD-SEMs and an array of bright- and dark-field wafer inspection systems. From a pacesetter FIB to a breakthrough PCI data management system.

That broad line, those advanced technologies, are what you'd expect from those who introduced the first Windows-operated TEM and who've made TEMs since 1941, SEMs since 1969, FE-SEMs since 1972 and FE-TEMs since 1983. We're also the company that's averaged over 1000 patents a year since 1976. Further, we're the people currently pioneering interactive, Internet-based "collaboration microscopy" and a 1-MV field-emission transmission electron microscope.

Small wonder our solutions—many of which were first developed for our own internal use and all of whose components are built in cleanrooms using Hitachi equipment—are the first choice

worldwide. But, more important, you can see virtually all of our microscopes demonstrated in our new 65,000-sq.-ft. demonstration/ training/ R&D facility. So, take the first step toward your perfect solution. Visit our Web site. Or simply call.

## HITACHI Inspire the Next

5100 Franklin Drive  
Pleasanton, CA 94588-3355  
(800) 227-8877  
E-mail: [emdsales@hitachi-hhta.com](mailto:emdsales@hitachi-hhta.com)  
[www.hitachi-hhta.com](http://www.hitachi-hhta.com)

940 Clopper Road, Suite 944  
Gaithersburg, MD 20878  
(800) 638-4087

Windows is a registered trademark of Microsoft Corporation

# *Go Native!*

## *Take total control of your SPM imaging environment*

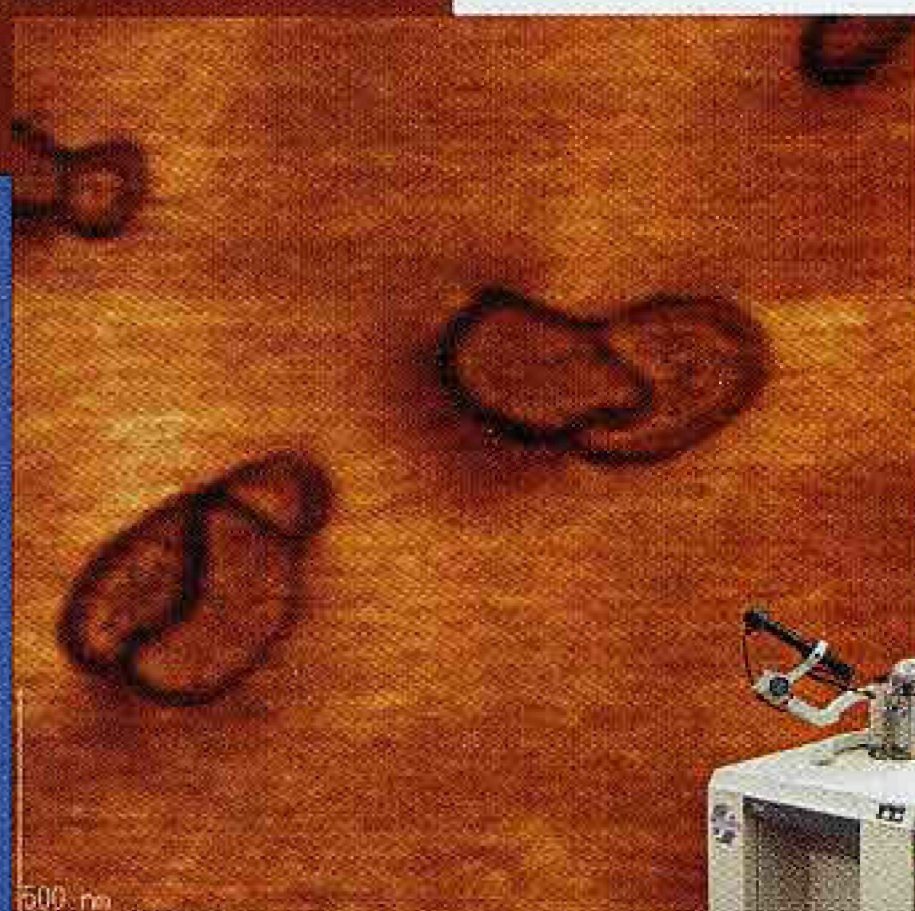
Introducing the JSPM-5200 from JEOL, the newest scanning probe microscope to let you explore the structure of surfaces in their native environments.

Analyze samples in fluid at body temperature, investigate optical coatings, and observe magnetic and electrical phenomena.

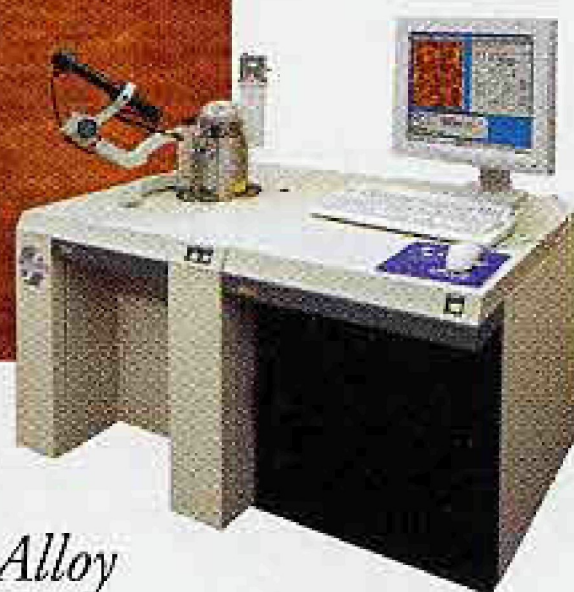
You control the imaging environment—fluid, vacuum, ambient air, or controlled atmosphere and the temperature (130K-800K) of your samples.

Powerful image processing and analysis functions—plus more than 20 data collection modes—will let you see things you've never seen before. Easy to operate and easy to upgrade, the JSPM-5200 is the most versatile SPM/AFM instrument for your research needs.

Contact the imaging experts at JEOL or visit [www.jeol.com/jspm-5200.html](http://www.jeol.com/jspm-5200.html) to see things as they really are.



*Scanning Kelvin Probe Microscopy (SKPM) and Topography Images of Sn Alloy*



- **Fluid, vacuum, ambient air or controlled atmosphere**
- **Cold and hot stages: 130K to 800K**
- **More than 20 data collection modes**
- **Easy upgrade path**

**Another  
Extreme Imaging  
Solution from**

# **JEOL**

978-535-5900 [eod@jeol.com](mailto:eod@jeol.com)