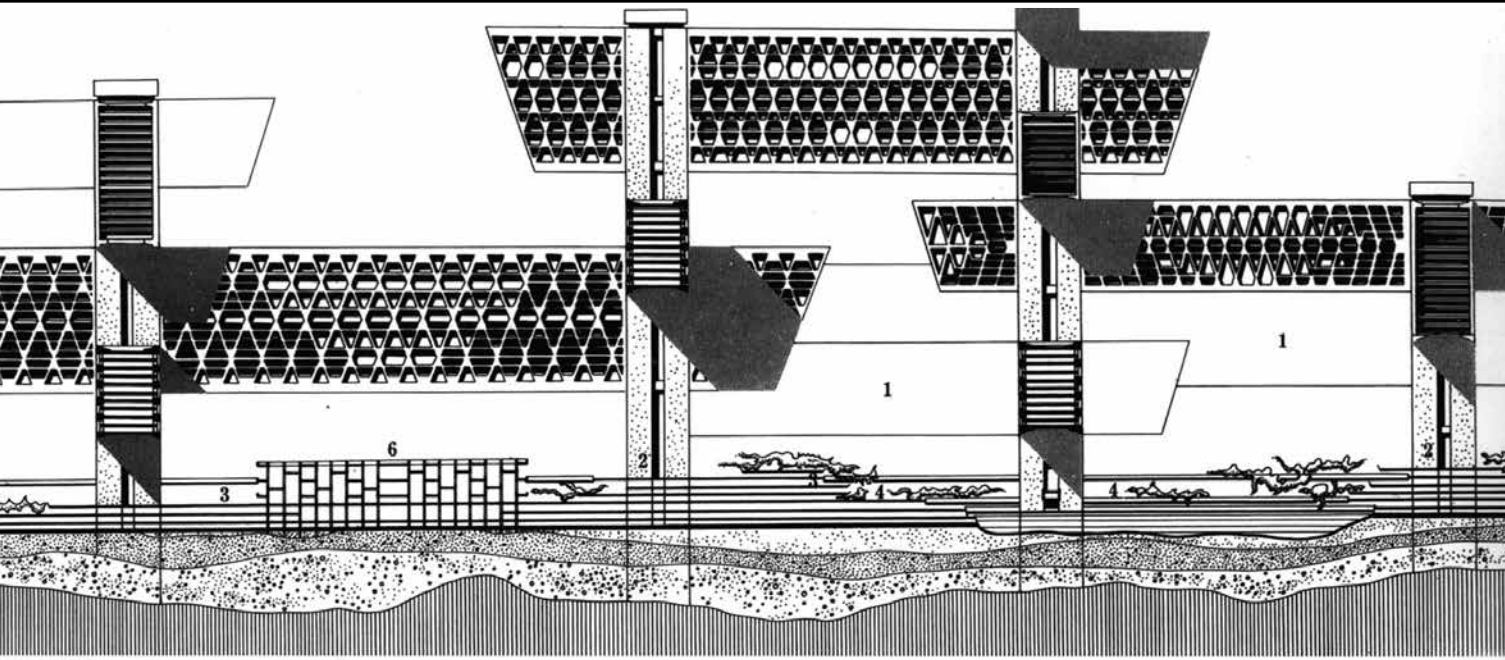


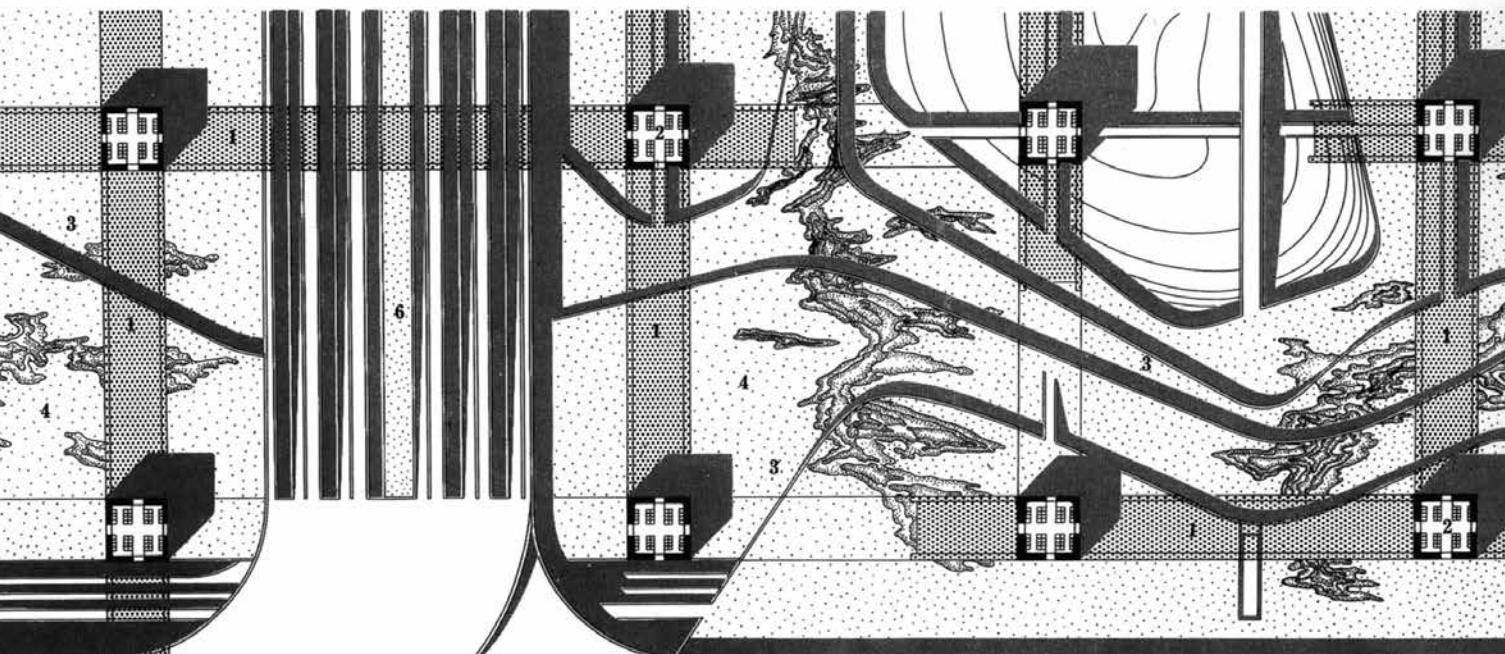
points of orientation
dementia, ageing and the city
infrastructures and affects

arq

architectural research quarterly



都市 断面



Editor-in-Chief **Adam Sharr**
E. adam.sharr@ncl.ac.uk

Editor-at-Large **Richard Weston**
E. richard@richardwestonstudio.com

Editors **Samuel Austin**
E. samuel.austin@ncl.ac.uk

Martyn Dade-Robertson
E. martyn.dade-robertson@ncl.ac.uk

Graham Farmer
E. graham.farmer@ncl.ac.uk

Zeynep Kezer
E. zeynep.kezer@ncl.ac.uk

Katie Lloyd Thomas
E. katie.lloyd-thomas@ncl.ac.uk

Juliet Odgers
E. juliet.odgers@ncl.ac.uk

Stephen Parnell
E. stephen.parnell@ncl.ac.uk

Editor **Edward Wainwright**
Reviews + Insight E. edward.wainwright@ncl.ac.uk

Assistant Editor **Ruth Lang**
Reviews + Insight E. r.lang2@ncl.ac.uk

Editorial Assistant **Ashley Mason**
E. arq@ncl.ac.uk

Art Editor + Design **Angela Ashton**
E. design@angelaashton.co.uk

Editorial Board

Simon Allford Allford Hall Monaghan Morris, UK
Andrew Ballantyne Newcastle University, UK
Mark Burry The University of Melbourne, Australia
Carlos Eduardo Comas Universidade Federal do Rio Grande do Sul, Brazil
Richard Coyne The University of Edinburgh, UK
Peggy Deamer Yale University, USA
Susannah Hagan University of Westminster, UK
Francine Houben Mecanoo, Holland
Susanne Hofmann Die Baupiloten, TU Berlin, Germany
Louisa Hutton Sauerbruch Hutton, Germany
Mari Hvattum The Oslo School of Architecture and Design, Norway
Timothy W. Hyde MIT, USA
Momoyo Kajijima Atelier Bow-Wow, Japan
Silke Kapp Universidade Federal de Minas Gerais, Brazil
Ulrika Karlsson KTH, Sweden
David Leatherbarrow University of Pennsylvania, USA
Lesley Lokko University of Johannesburg, South Africa
Mary McLeod University of Columbia, USA
Steven A. Moore The University of Texas at Austin, USA
Michael Ostwald The University of Newcastle, Australia
Simo Paavilinen Aalto University, Finland
Jane Rendell Bartlett School of Architecture, UCL, UK
Daniel Rosbottom TU Delft, Holland
Andreas Rumpfhuber Expanded Design, Austria
Simon Sadler University of California, Davis, USA
Flora Samuel University of Reading, UK
Jonathan Sergison Sergison Bates Architects, UK
Despina Stratigakos University at Buffalo, USA
Koen Steemers University of Cambridge, UK
John Tuomey O'Donnell + Tuomey, Ireland
Sarah Wigglesworth Sarah Wigglesworth Architects, UK
Jianfei Zhu The University of Melbourne, Australia

arq: Architectural Research Quarterly (issn 1359-1355) is published four times a year in March, June, September and December. Four parts form a volume. The subscription price which includes print and electronic access (but excluding vat) of volume 22 is £328.00 (US \$551.00 in USA, Canada and Mexico) for institutions; £56.00 (US \$86.00 in USA, Canada and Mexico) for individuals and £40.00 (US \$67.00 in USA, Canada and Mexico) for students, which includes print only, ordering direct from the publishers and certifying that the journal is for their personal use. Single parts are £94.00 net (US \$152.00 in USA, Canada and Mexico) plus postage. EU subscribers (outside the UK) who are not registered for vat should add vat at their country's rate. vat registered members should provide their vat registration number. Japanese prices for institutions (including ASP delivery) are available from Kinokuniya Company Ltd, P.O. Box 55, Chitose, Tokyo 156, Japan. Orders which must be accompanied by payment, may be sent to a bookseller, subscription agent or direct to the publisher: Cambridge University Press, Journals Fulfillment Department, UPH, Shaftesbury Road, Cambridge CB2 8BS, UK; or in the USA, Canada and Mexico: Cambridge University Press, Journals Fulfillment Department, 1 Liberty Plaza, Floor 20, New York, NY 10006, USA. Copies of the journal for subscribers in the USA, Canada and Mexico are sent by air to New York to arrive with minimum delay.

Copying

The journal is registered with the Copyright Clearance Center, 222 Rosewood Drive, Danvers, MA 01923, USA. Organizations in the USA who are also registered with C.C.C may therefore copy material (beyond the limits permitted by sections 107 and 108 of U.S. Copyright law) subject to payment to C.C.C. of the per-copy fee of \$16. This consent does not extend to multiple copying for promotional or commercial purposes. Code 1359-1355/2018/\$16.

ISI Tear Sheet Service, 3501 Market Street, Philadelphia, PA 19104, USA, is authorized to supply single copies of separate articles for private use only.

Organizations authorized by the Copyright Licensing Agency may also copy material subject to the usual conditions.

For all other use, permission should be sought from Cambridge or from the American Branch of Cambridge University Press.

Information on **arq: Architectural Research Quarterly** and all other Cambridge journals can be accessed via <http://www.journals.cambridge.org/>

This journal issue has been printed on FSC-certified paper and cover board. FSC is an independent, non-governmental, not-for-profit organization established to promote the responsible management of the world's forests. Please see www.fsc.org for information.

© Cambridge University Press 2018

Printed in the UK by Bell & Bain Ltd, Glasgow

COVER
 Kenzō Tange, *A Plan for Tokyo*. Core structure in the office district.
 Image: Tange Associates.
 See pp. 139–150.

leader	99	Points of orientation
obituary	100	Lionel March: 1934–2018 Philip Steadman
design	104	Dementia, ageing, and the city: learning from the streets of Melbourne Rebecca McLaughlan, Michael Annear, and Alan Pert review two speculative projects for the urban realm in relation to best practice approaches in designing for people living with dementia, to identify limitations in contemporary design practice.
history	115	Architecture, cinema, and images of childhood in 1950s Britain Liat Savin Ben Shoshan appraises images of childhood in 1950s Britain and their resonance with architectural modes of representation alongside changes in conceptions of childhood.
	127	The stickiness of affect in architectural practice: the image-making practice of Reiser + Umemoto, RUR Architecture DPC Akari Nakai Kidd considers how the stickiness of affect operates through architectural image-making practices as part of the design process, with focus on RUR's project for Kaohsiung Port Terminal.
	139	Kenzō Tange's <i>A Plan for Tokyo, 1960</i>: a plan for urban mobility Hyunjung Cho examines Kenzō Tange's <i>A Plan for Tokyo, 1960</i> as a technocratic plan for urban mobility against the backdrop of Japan's rapid motorisation and informatisation.
theory	151	'Endless forms, vistas and hues': why architects should read science fiction Amy Butt argues for the value of reading science fiction among architects and urban theorists, to reimagine and critically reconsider cities currently under construction.
education	161	The Yamanote Line as architecture: building on the ruination of urban limits François Blanciak examines the Yamanote Line in Tokyo, discussing how infrastructure tends to create urban limits that segregate, and pondering the role architecture can play in overcoming them.
reviews	171	Form Folgt Paragraph (Form Follows Rule) Reviewed by Elke Krasny
	175	The University is Now on Air: Broadcasting Modern Architecture Reviewed by Fabrizio Gallanti
	181	Otl Aicher's Isny: How a German Town Defied the Postcard Mentality Reviewed by Tom Atkinson
drawing matter		Images from the Drawing Matter archive can be found on pages 174 and 180
subscribe		A subscription form, which may be copied, can be found on page 98 of this issue