

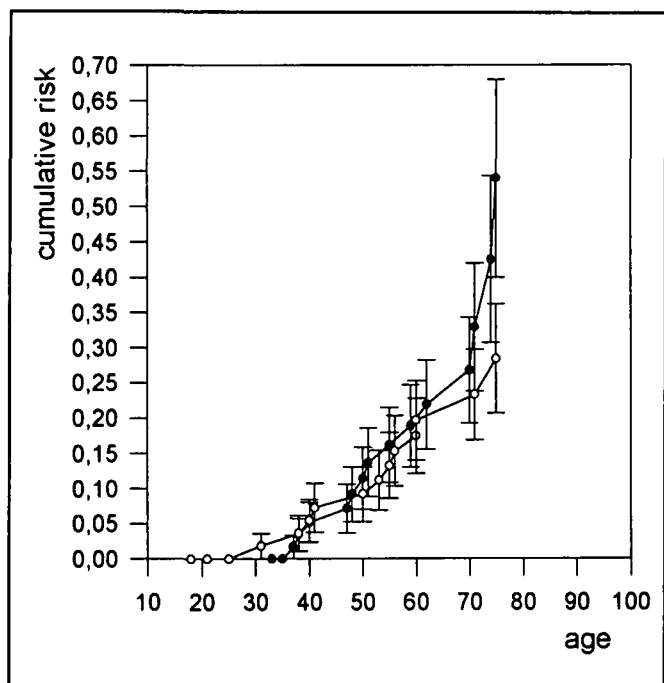
to have an impact on the lives of Canadians across the country. Since its inception, the Foundation has authorized grants totalling more than \$49 million in three main areas: health, Canada and the Asian Pacific, and veterinary science and education.

Established in 1982 as a partnership among universities, governments and the private sector, the CIAR network is based in

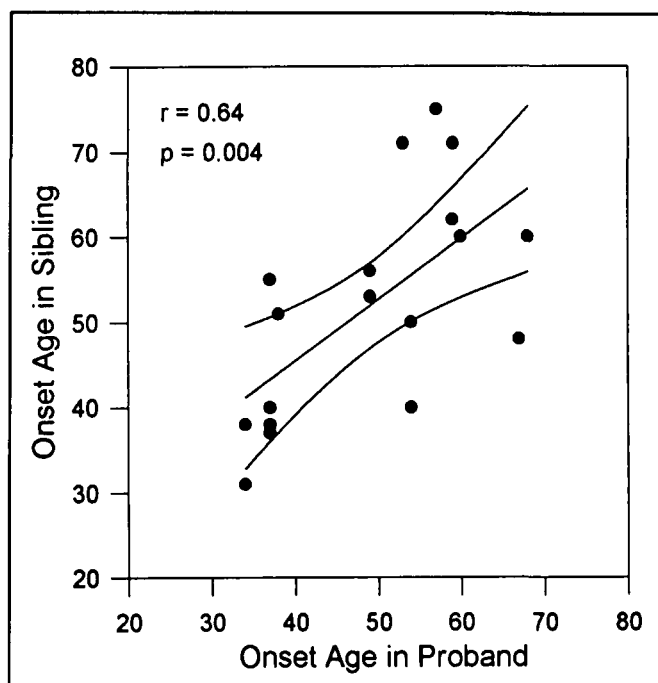
Canada and extends to the U.S., Europe, the Middle East and Japan. Renowned scientists and scholars collaborate on interdisciplinary teams to address issues in a variety of program areas ranging from economic growth and population health to evolutionary biology.

### Erratum

In the article entitled "Familial Parkinson's Disease: A Clinical Genetic Analysis" (Can J Neurol Sci 1995; 22: 272-279) Figures 2 and 3 should have been printed as follows:



**Figure 2:** Estimated cumulative risk of PD ( $\pm$  standard errors) for siblings (○) and for parents (●) of probands within the 22 multicase families.



**Figure 3.** Linear regression analysis of the age of PD onset in probands and each of their affected siblings.