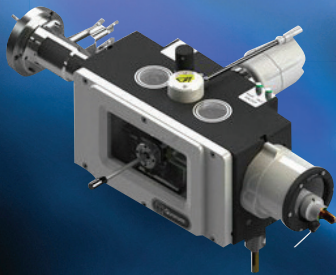


EMS has it! *the latest technology for...*

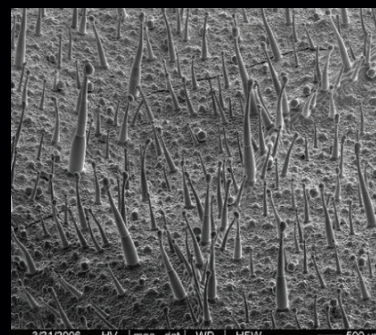
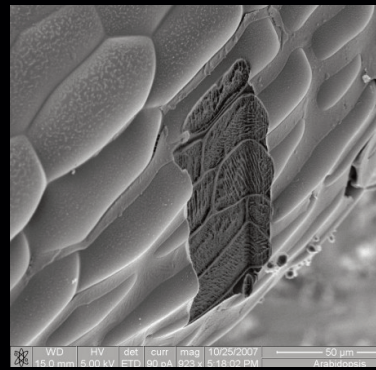
**Electron
Microscopy
Sciences**

CRYO-SEM Preparation



The PP3010T is a highly automated, easy-to-use, column-mounted, gas-cooled cryo preparation system suitable for most makes and models of SEM, FE-SEM and FIB/SEM. The PP3010T has all the facilities needed to rapidly freeze, process and transfer specimens.

Now, building on the success of the PP3010T cryo-SEM/FIB/SEM preparation system, we are pleased to announce three new related products for ambient and cryo temperature transfer...



NOW AVAILABLE: NEW Specimen Transfer Systems

PP3004 QuickLok

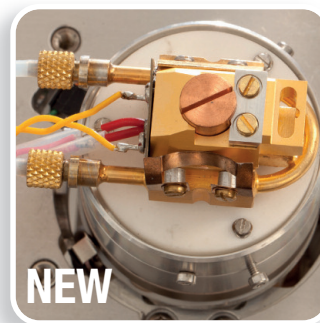
Ambient temperature airlock for SEM, FIB/SEM, beamline and vacuum platforms



- Rapid specimen exchange
- Vacuum and inert gas transfer
- Field-retrofittable to most systems
- Upgrade path to CoolLok
- Custom designed holders available
- 3 year warranty

PP3005 SEMCool

Non-airlock cryo cooling for SEM, FIB/SEM, beamline and vacuum platforms



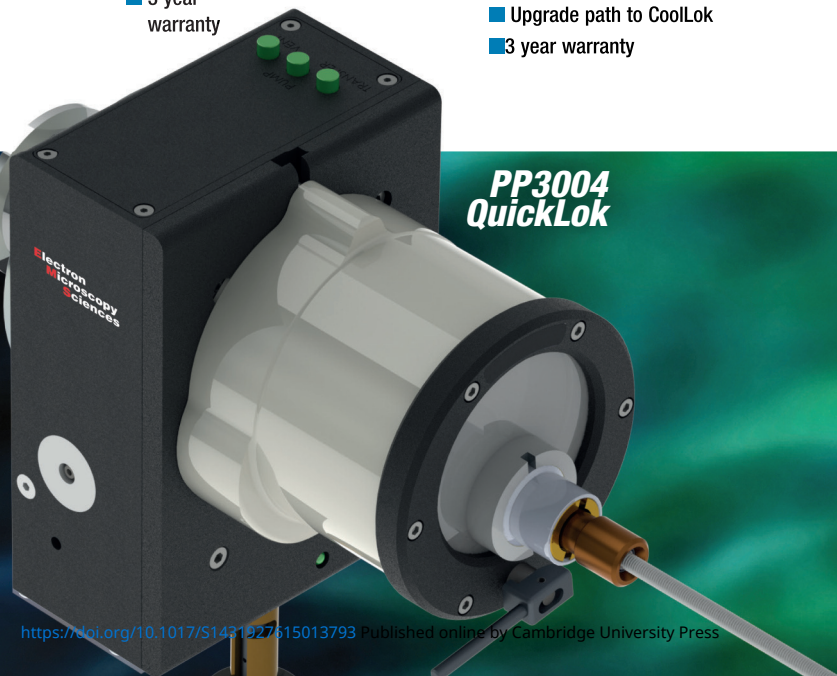
- Temperature range down to -190°C, with stability better than 0.5°C
- Off-column cooling with all-day runtime between fills
- Independent cooling of cold stage and cold trap
- Upgrade path to CoolLok
- 3 year warranty

PP3006 CoolLok

Cryo transfer systems for SEM, FIB/SEM, beamline and vacuum platforms



- Rapid specimen exchange
- Temperature range down to -190°C with stability better than 0.5°C
- Off-column cooling with all-day runtime between fills
- Independent cooling of cold stage and cold trap
- Vacuum or inert gas transfer
- Rapid specimen freezing option
- 3 year warranty



**PP3004
QuickLok**

**CONTACT US FOR
MORE INFORMATION...**

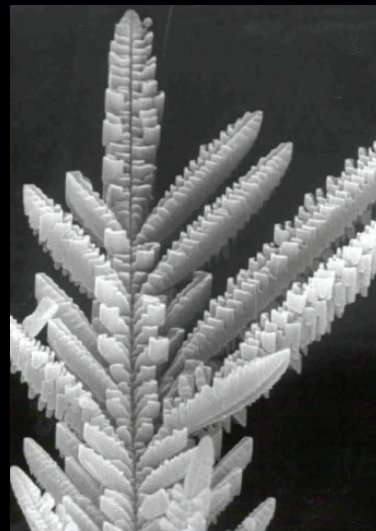
**Electron
Microscopy
Sciences**

P.O. Box 550 • 1560 Industry Rd.
Hatfield, Pa 19440
Tel: (215) 412-8400
Fax: (215) 412-8450
email: sgkcck@aol.com
or stacie@ems-secure.com
www.emsdiasum.com

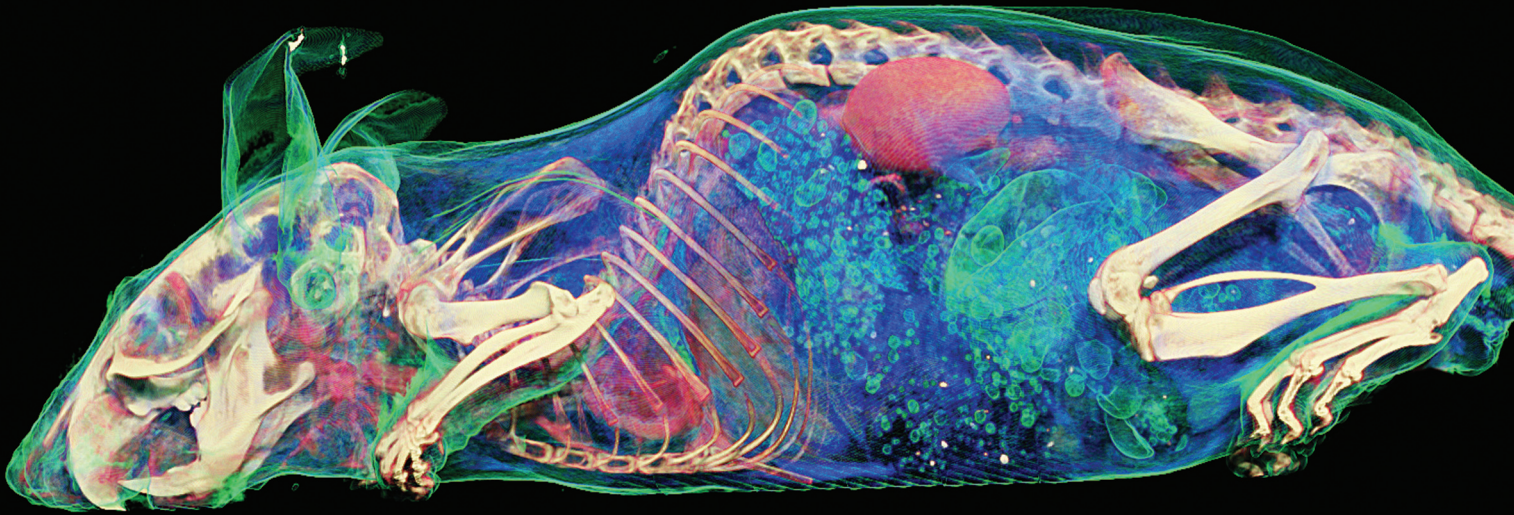
**See how it works...
Learn how to do it...**

We've added video content to our website to help you get to know our latest products even better!

Stop by and see what it's all about.



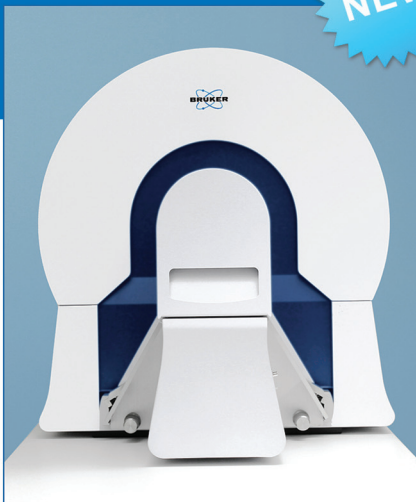
Bruker microCT



NEW

SKYSCAN 1278

World's Fastest Low-Dose *In-Vivo* Microtomograph



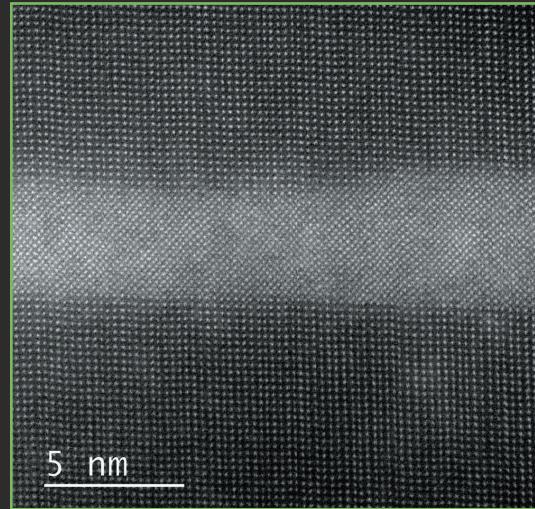
- 7.2 sec shortest full body scan with <10mGy typical applied dose,
- 50µm nominal resolution at any place of 80mm scanning diameter,
- Fast GPU-accelerated 3D reconstruction,
- Physiological monitoring with 5Mp color camera, ECG, breathing detection, etc.,
- 2D/3D image analysis, 3D morphometry, surface and volume rendering,
- Export results to mobiles, volume rendering for iPhone, iPad and Android devices,
- Unlimited free access to all software updates.

bruker-microct.com

microtomography

Innovation with Integrity

Goodbye vacuum... Hello Atmosphere



Ranier Straubinger in the Kerstin Volz group at Philipps University Marburg, Marburg Germany

1000 °C, 1 Atm
That's real world *in situ*.



Pressure and temperature with the microscope

Learn more about Atmosphere today at www.protochips.com



Protochips
Quantifiably Better™

Isn't it about time you had your own Digital Microscope?

Now you can with the portable, affordable uScopeMXII!

The uScopeMXII is a small digital desktop microscope you can use in your workplace or home office. It captures images from standard glass slides and sends them to your PC.

You can interactively browse slides with full control of focus, image processing, and location. You can also scan regions of

interest creating fully focused image sets.

The industry-standard USB interface makes it simple to plug in and start capturing images. It easily interfaces with your desktop or laptop PC and allows you to view and capture slide images in a wide variety of environments.

The uScopeMXII is manufactured in the United States.

Features and Benefits

■ Overview and Objective Cameras

The uScopeMXII has an objective camera for scanning and an overview camera for navigating.

■ Automatic Focus

Images are automatically focused using configurable focus algorithms.

■ Portability

At a weight of about 5 lbs., the uScopeMXII is highly portable.

■ Easy to Use

The uScope Navigator software simplifies scanning and browsing.

■ Self-Contained

The uScopeMXII is self-contained and includes the electronics, cameras, stage, and optics in a device about the size of a large external disk drive.

■ Full Imaging Control

User filters provide complete control over image processing and correction.



Microscopes International, LLC

555 Republic Drive, Suite 119
Plano, TX 75074-5498

Phone +1-214-785-2058

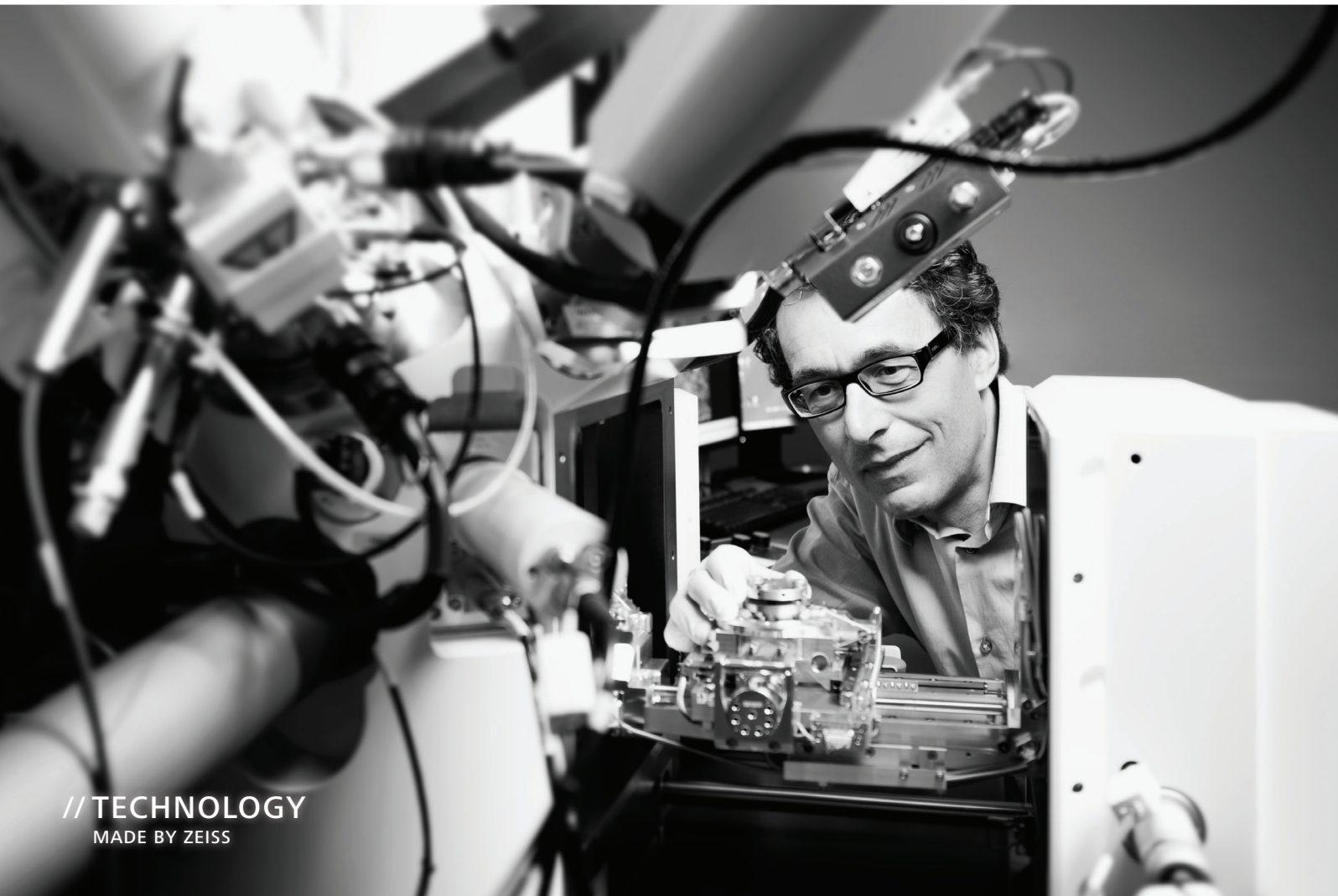
FAX +1-214-785-2138

Email sales@uscopes.com

support@uscopes.com

**Call us today for a quote
or to schedule a demonstration**

The moment "I think" becomes "I know."
This is the moment we work for.



// TECHNOLOGY
MADE BY ZEISS

Throughout the world, ZEISS stands for the highest quality and reliability. As the world's only manufacturer of light, X-ray and electron/ion microscopes, ZEISS offers tailor-made systems for industry, materials research and academia. Join us at the ZEISS booth for a Lunch & Learn or Evening Tutorial to learn more about advanced and emerging microscopy techniques, or sign-up to demo one of our new systems.

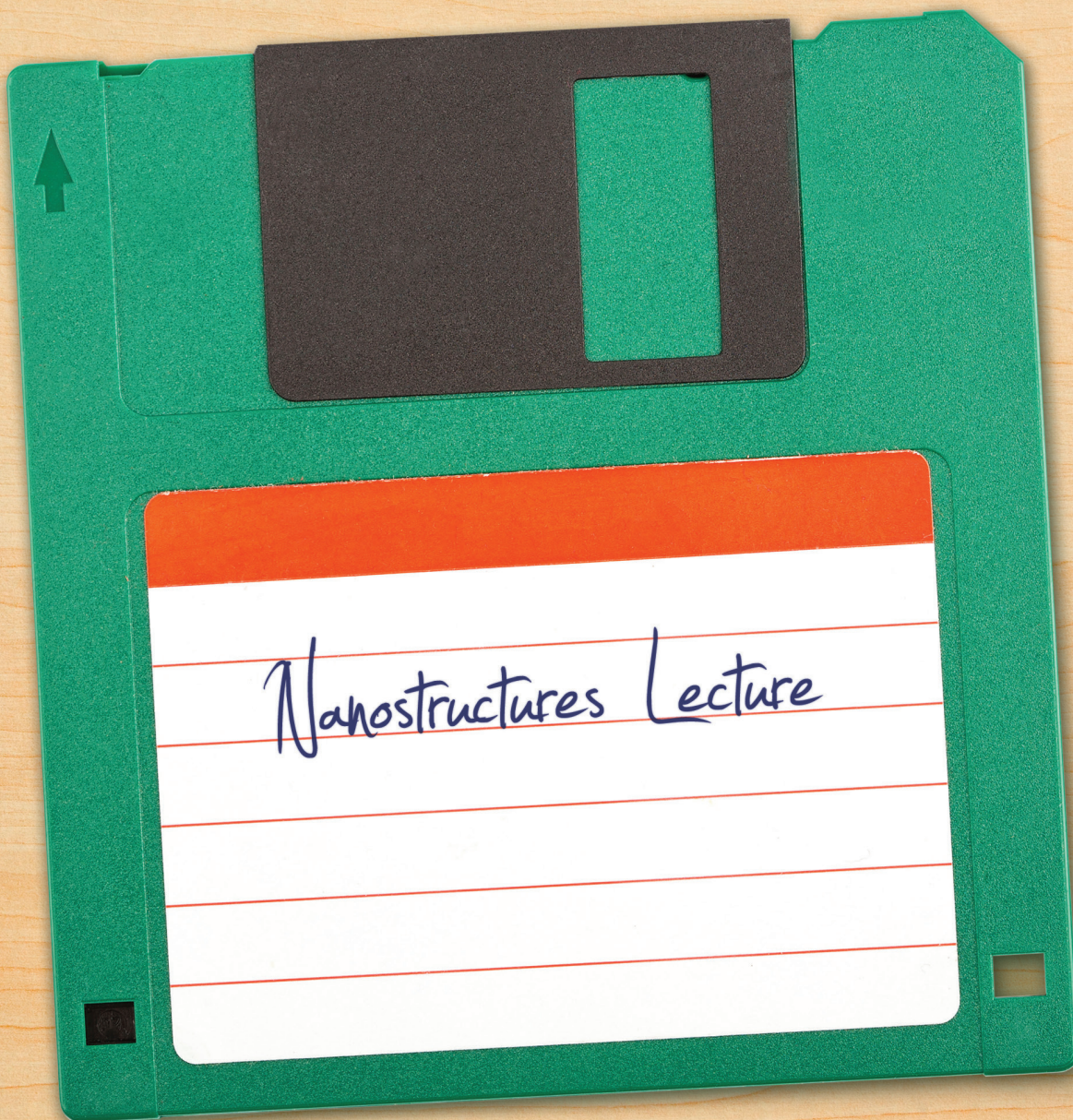
M&M | August 3 - 6, 2015 | Booth #638



info.microscopy.us@zeiss.com
www.zeiss.com/microscopy/mm



We make it visible.



You've come a long way.

But is your current instrument holding you back?

The success of your university is limited by the funding of your TEM lab. With instruments from FEI, you could publish more papers, gain more prestige for your university, and secure more funding for your TEM lab.

Learn more at FEI.com/DiscoverMore



Explore. Discover. Resolve.

THE NEW VITUA STREAMLINED TEM SAMPLE PREPARATION FOR THE LIFE SCIENCES



Introducing the Denton Vacuum Vitua® - the first automated TEM sample preparation system specifically designed to support high resolution rotary shadow casting of large organic molecules.

DENTON VACUUM

BARRIERS BECOME BREAKTHROUGHS

Visit us at:

www.dentonvacuum.com/mt



Your small contamination
is our big priority.

GV10x
Plasma Cleaner

 **ibss**
Group, Inc.
www.ibssgroup.com

5-in-1 fantasy: Giralope.



5-on-1 reality: Bruker's range of analytical tools for SEM.



EDS, EBSD, WDS, Micro-XRF and Micro-CT – **Bruker is the world's only manufacturer to offer five analysis methods for SEM.** Plus, our new ESPRIT 2.0 software not only controls our QUANTAX EDS and QUANTAX EBSD but also, via its functional interface, our innovative new XSense WD spectrometer and XTrace micro-spot X-ray source. And because we know what you expect of us, we are already thinking about our next innovation. **Someone has to be first.**



www.bruker-5on1.com

Innovation with Integrity

Nano-Analysis



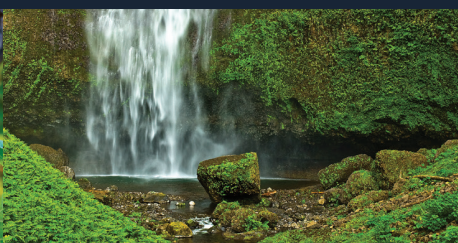
Visit the website often for details on Symposia, Exhibits, Biological and Physical Sciences Tutorials, In-Week Intensive Workshops, Posters, Sunday Short Courses and Pre-Meeting Congress!

MICROSCOPY & MICROANALYSIS

August 2-6 • Portland, OR



<http://microscopy.org/MandM/2015>



[Program Information](#) | [Information for Students](#) | [Meeting Awards](#) | [Exhibitor List & Floor Plan](#)

[Online Registration](#) (opens February 2015) | [Portland Hotel Information](#) (reservations available February 2015)



DIATOME DIAMOND KNIVES

40 YEARS

OF DEVELOPMENT, MANUFACTURING, AND CUSTOMER SERVICE

What have we achieved in this period?

ultra 45° the first diamond knife with an absolutely score-free, hydrophilic cutting edge.

semi the first diamond knife for alternating sectioning ultrathin/semithin.

cryo the diamond knife for sectioning at low temperature.

histo the first diamond knife for semithin sections for light microscopy.

ultra 35° the diamond knife for optimized sectioning results in almost all applications.

STATIC LINE II the ionizer for eliminating electrostatic charging in ultramicrotomy.

cryo-P a cryo knife with a patented platform for section pick up.

cryo immuno the optimized cryo diamond knife for the Tokuyasu technique.

ultra sonic the oscillating diamond knife for room temperature sectioning.

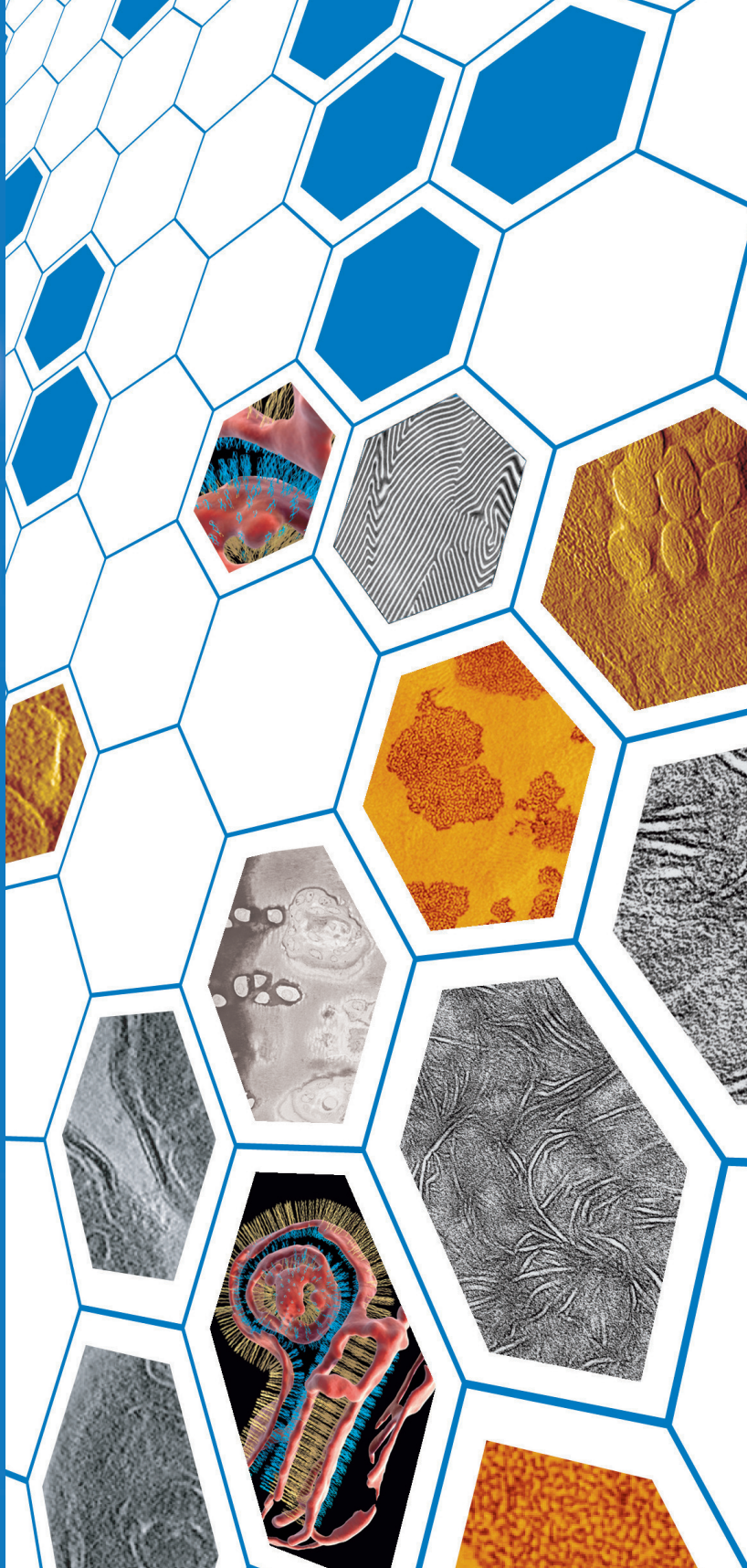
cryotrim 45 and 25 optimizing trimming with diamond blades.

ultra AFM & cryo AFM the first diamond knives for AFM at room and low temperatures.

cryo 25° for sectioning frozen hydrated specimens.

What services can we offer you?

- Technical assistance in all fields of ultramicrotomy.
- Free sectioning tests for all types of samples.
- Make use of our many years of experience in perfecting our knives.
- Custom knives, tools, and boats.
- Special purchase programs.
- Workshops and training.



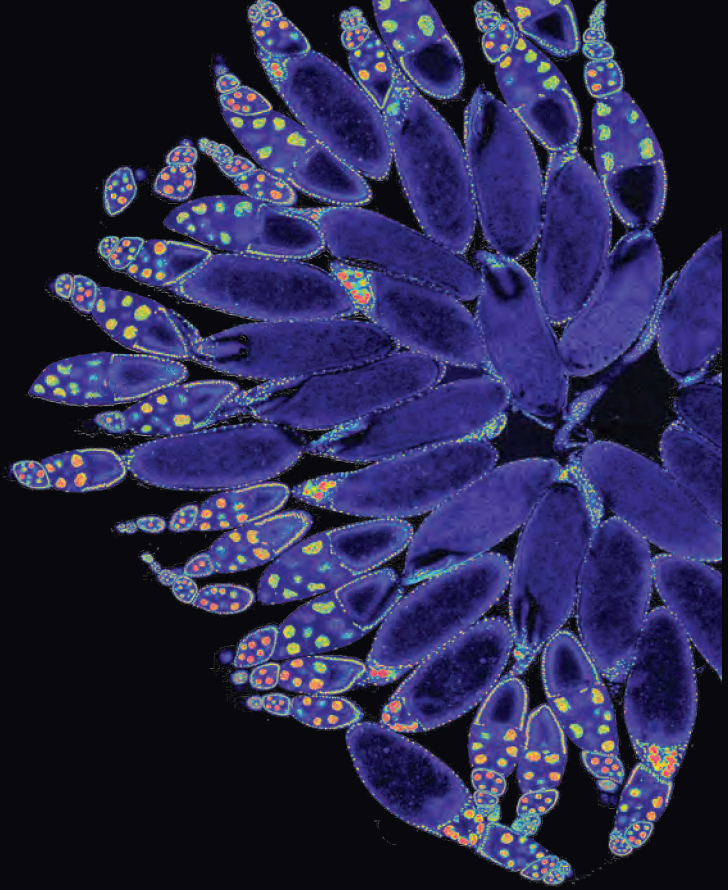
DIATOME

for all your sectioning requirements

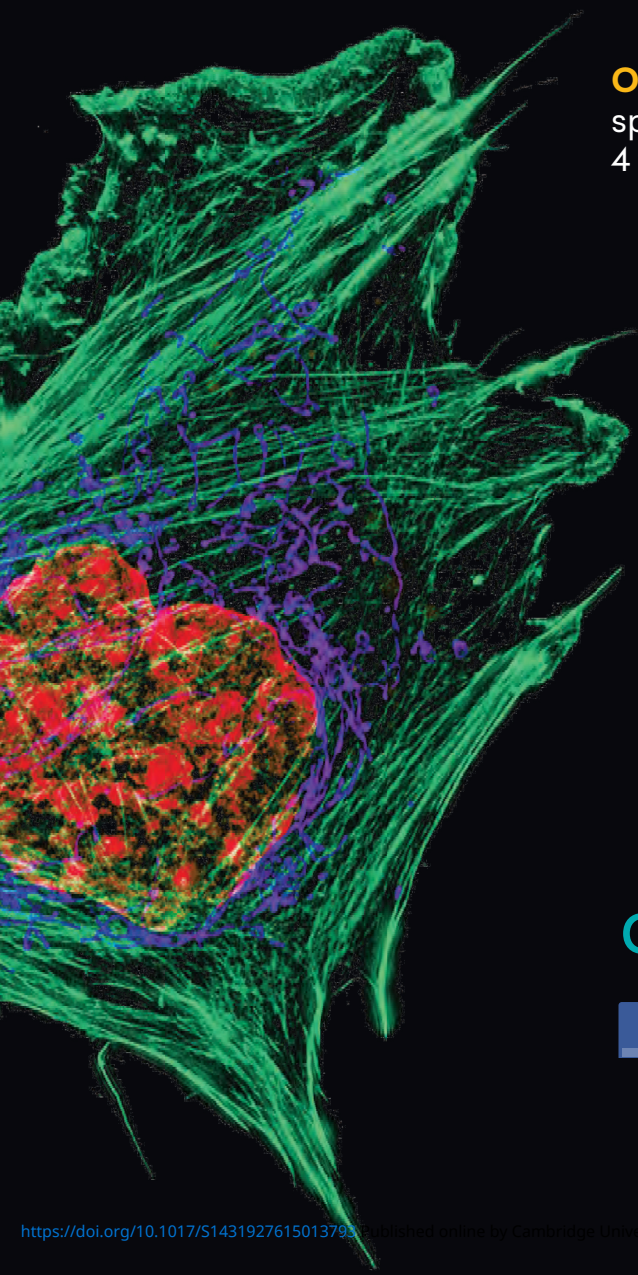
For more information, please call or write us today,
or visit us online at: www.emsdiasum.com

P.O. Box 550
1560 Industry Rd.
Hatfield, Pa 19440
Tel: (215) 412-8390
Fax: (215) 412-8450
email: sgkcck@aol.com
www.emsdiasum.com

SAVE *the* DATE



2015 cell biology
ascb annual meeting
san diego, california · december 12-16



Over 26% of attendees in 2014 made a scheduled spoken presentation. Submit an abstract by August 4 to be considered for a speaking spot:

- **Minisymposium Standard Talk**
(15-minute talk, 5-minute Q&A)
- **Minisymposium Lightning Talk**
(5 minute talk, 1-2-minute Q&A)
- **Microsymposium Talk**
(5-minute talks with electronic posters)

The meeting's arc will follow the integration of cell biology across diverse fields, scales, and structures into newly relevant scientific disciplines. It's about connecting traditional cell biology questions to new sequencing-based and super high-resolution imaging methods enabled by big data collection and analysis. Present your best and boldest science at this forward-thinking meeting!

ascb.org/2015meeting



/ascbiology



@ascbiology
#ascb15



ascb



Speed, precision and confidence when results matter

- Combines the ease of use of the TEAM™ platform with the analytical powers of OIM™ for state of the art microstructural characterization for all users
- The fastest EBSD cameras on the market combine high speed collection with high precision measurements for results without compromise
- Dynamic live mapping allows for real time data analysis
- World-class triplet indexing for confidence in your results

**TEAM™
EBSD** 

**TEAM™
EDS** 

**TEAM™
WDS** 

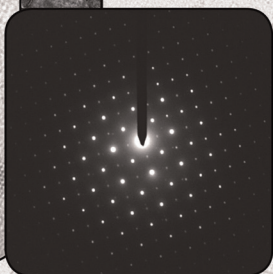
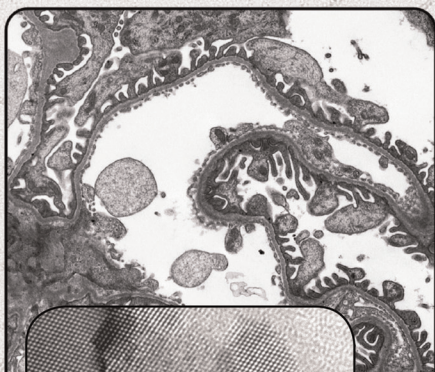
AMETEK®
MATERIALS ANALYSIS DIVISION

edax.com

EDAX®
Smart Insight

SIA

1 TO 50 MEGAPIXELS live and slow scan
MAGNIFICATION FACTOR OF 1 on bottom mounted cameras
DIFFRACTION BEAM STOP on side mounted cameras



Affordable TEM camera systems for research, education, healthcare, and industry since 2001

Scientific Instruments and Applications
2773 Heath Lane • Duluth, GA 30096
(770) 232 7785 • www.sia-cam.com

INDEX TO ADVERTISERS

Bruker MicroCT	A3, A21
Bruker Nano GmbH	A15, A27
Carl Zeiss Microscopy, LLC	A17, A24
Denton Vacuum	A16, A26
Diatome	Cover 2, A29
EDAX, Inc.	A11, A31
Electron Microscopy Sciences, EMS	A20, P. 790
FEI Company	A6, A25
Gatan	A5, Cover 3
IBSS Group	A13, A26
International Centre Diffraction Data, ICDD	A16
JEOL	A9, A19, Cover 4
Microscopes International, LLC	A10, A23
MSA Ads	A13, A14, A18, A28, A30
Protochips	A12, A22
SIA Scientific Instruments & Applications	A18, A32

Cathodoluminescence

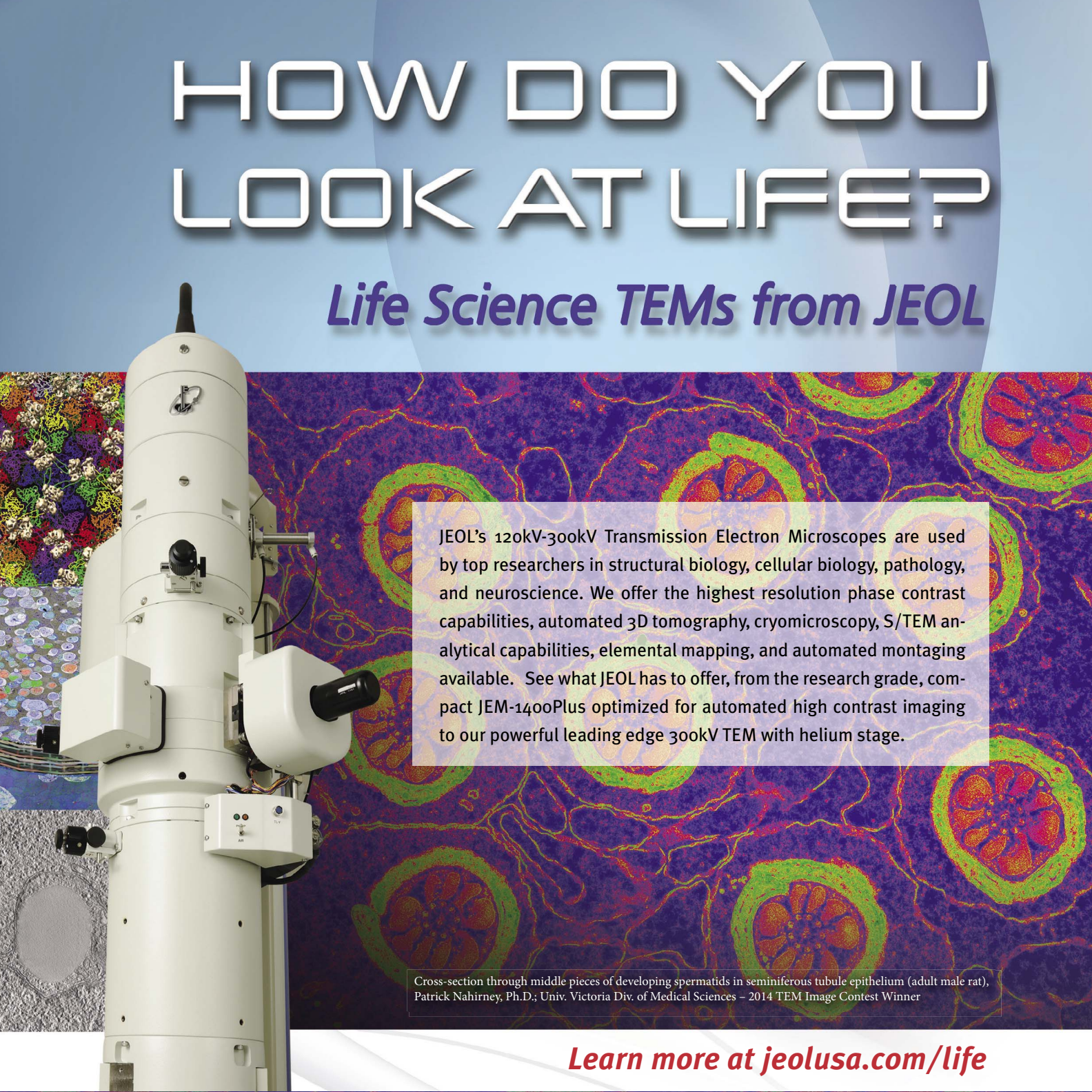
Reveal unique insights into the chemical and electronic properties of materials at the microscopic level using cathodoluminescence. See how the ChromaCL2™ system unearths geochemical processes, including crystalline growth, mineral dissolution, plus sedimentary and metasedimentary rock provenance.

Epoxy mount of heavy-mineral separates acquired with a Gatan ChromaCL2 system; image courtesy of Dr. Clayton Loehn, the Arizona LaserChron Imaging Facility, University of Arizona.



HOW DO YOU LOOK AT LIFE?

Life Science TEMs from JEOL



JEOL's 120kV-300kV Transmission Electron Microscopes are used by top researchers in structural biology, cellular biology, pathology, and neuroscience. We offer the highest resolution phase contrast capabilities, automated 3D tomography, cryomicroscopy, S/TEM analytical capabilities, elemental mapping, and automated montaging available. See what JEOL has to offer, from the research grade, compact JEM-1400Plus optimized for automated high contrast imaging to our powerful leading edge 300kV TEM with helium stage.

Cross-section through middle pieces of developing spermatids in seminiferous tubule epithelium (adult male rat), Patrick Nahirney, Ph.D.; Univ. Victoria Div. of Medical Sciences – 2014 TEM Image Contest Winner

Learn more at jeolusa.com/life

Bacteriophage Epsilon 15, Wah Chiu, Ph.D.,
Baylor College of Medicine (top image)

Rabbit Retinal Connectome volume; Robert Marc, Ph.D.,
Marc Lab, Moran Eye Center, Univ. of Utah (middle image)

Neuron, 200nm, tomography; Greg Ning, Ph.D.,
Penn State University College of Agricultural Sciences
(bottom image)



JEOL
Solutions for Innovation

www.jeolusa.com
salesinfo@jeol.com • 978-535-5900