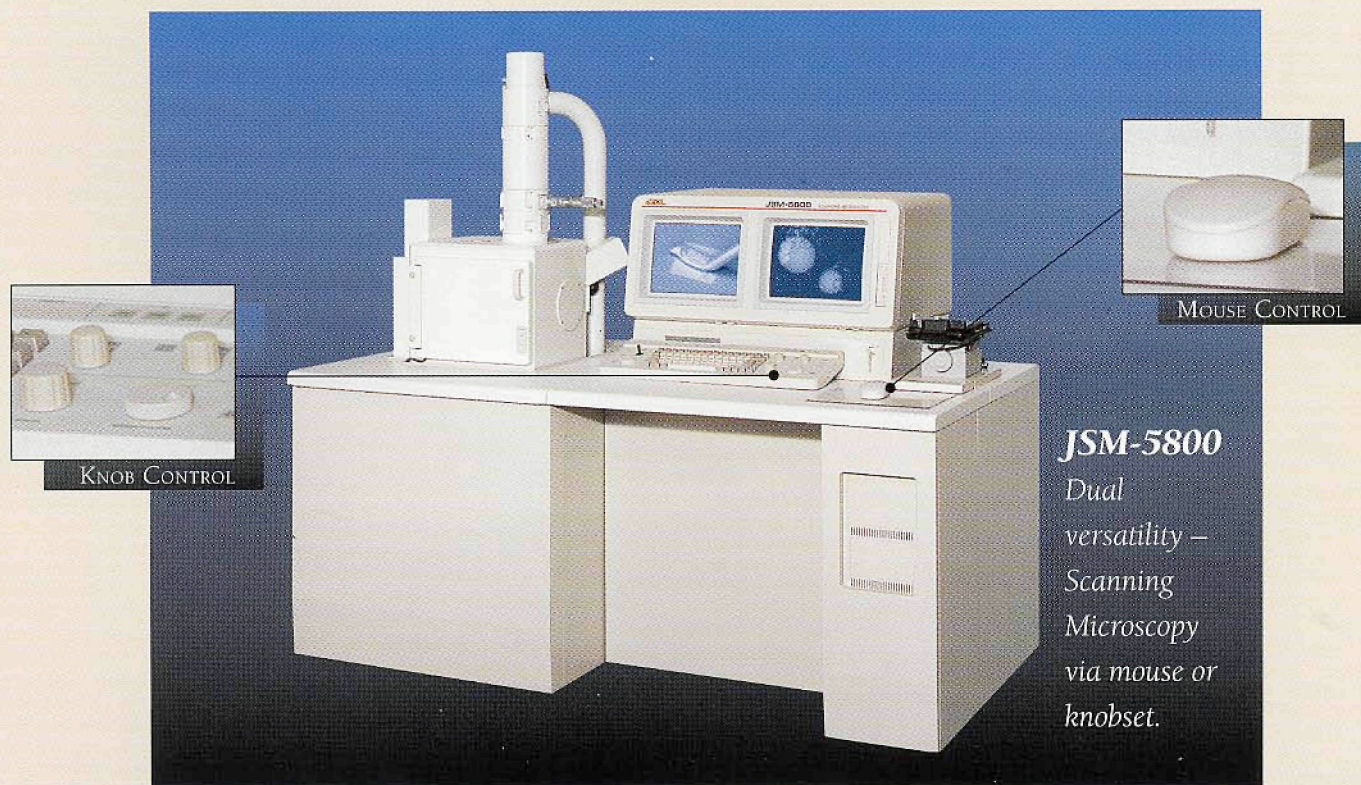


Twice As Precise

JSM-5800 Scanning Microscope Features Two Options for Optimum Control.



JSM-5800
Dual
versatility –
Scanning
Microscopy
via mouse or
knobset.

- Large Specimen Stage
- High/low vacuum capability
- Super Conical Objective Lens for high resolution

Suitable for a wide range of applications, the JSM-5800 from JEOL represents a new era in scanning microscopy. Now you have the option to choose either mouse or knobset control, while taking advantage of the super conical objective lens designed for the highest resolution (3.5nm) and large sample tilting.

- ▶ Easy-to-use unit has a wide range of built-in automatic functions.
- ▶ Large specimen stage allows room for up to an 8-inch sample.
- ▶ Archiving enables temporary or permanent storage and retrieval in standard TIF format.
- ▶ Five axis stage automation makes the JSM-5800 fast and easy-to-use.

Discover the twice as precise alternative that is as unique as your work itself.

To arrange for a demonstration of the innovative JSM-5800 call JEOL today.



JEOL USA, Inc., 11 Dearborn Road, Peabody, MA 01960 Tel: 508-535-5900 Fax: 508-536-2205 e-mail: eod@jeol.com

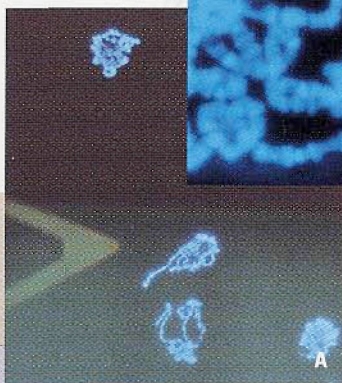
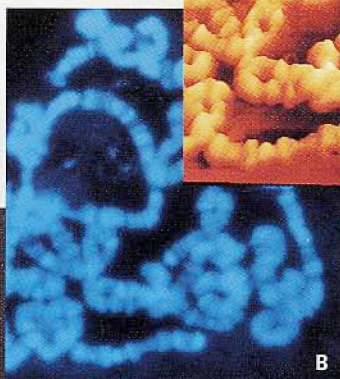
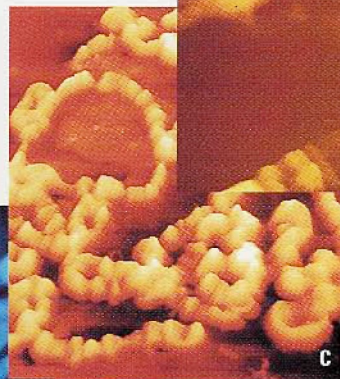
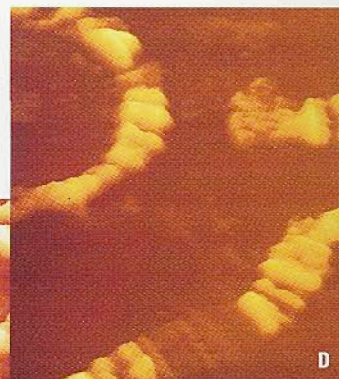
Circle Reader Inquiry #4

Now You Can Add Molecular Level Imaging To Your Inverted Optical Microscope

You don't hear about major advances in established scientific techniques very often. But that's exactly what Explorer LifeSciences SPM™ means to cell and molecular biologists...the high-resolution, three-dimensional imaging of a scanning probe microscope combined with the capability and familiarity of an inverted optical microscope.

Add an Explorer LifeSciences SPM head and baseplate adapter to almost any inverted optical microscope...Zeiss, Nikon, Olympus and more. Visually position the SPM probe over the sample precisely where you want it. Now you're ready to produce images with lateral definition and quantitative height information at molecular resolution. Images of unparalleled accuracy made under true physiological conditions with as little as 50µl of solution. And you'll be able to monitor the integrity of your sample with your inverted optical microscope the entire time you're scanning.

But great images aren't all you'll get with Explorer LifeSciences SPM. For example, it's the only SPM with *One-Pass Imaging™*. That gives you up to eight



channels of data simultaneously over scan

areas to 130µm square and 12µm in the Z range.

To learn just how easy it is to add SPM capability to your laboratory, call us today at 1-800-765-5067. Just tell us which inverted optical microscope you have and we'll have product information on it's way to you fast.

The four images of polytene chromosome clusters show: visual positioning of the SPM probe tip (A); an optical microscope image (B); a 100µm atomic force microscope (AFM) image (C); a 50µm AFM image showing bands and interbands (D).

Explorer, Explorer LifeSciences SPM and One-Pass Imaging are trademarks of TopoMetrix. Other trademarks and registered trademarks are the property of their respective owners.



5403 Betsy Ross Drive, Santa Clara, California, 95054
Tel 408-982-9700, Fax 408-982-9751

Circle Reader Inquiry #1

