

THE
GEOLOGICAL MAGAZINE

OR,

Monthly Journal of Geology:

WITH WHICH IS INCORPORATED

“THE GEOLOGIST.”

NOS. DXXXV TO DXLVI.

GEOLOGY DEPARTMENT

BIRKBECK COLLEGE

PRINTED BY

HENRY WOODWARD, LL.D., F.R.S., F.G.S., F.R.M.S.,

LATE OF THE BRITISH MUSEUM OF NATURAL HISTORY; PRESIDENT OF THE
PALÆONTOGRAPHICAL SOCIETY; ETC., ETC.

ASSISTED BY

PROFESSOR J. W. GREGORY, D.Sc., F.R.S., F.G.S.,

DR. GEORGE J. HINDE, F.R.S., F.G.S.,

SIR THOS. H. HOLLAND, K.C.I.E., A.R.C.S., F.R.S.,

PROFESSOR W. W. WATTS, Sc.D., M.Sc., F.R.S., V.P.G.S.,

DR. ARTHUR SMITH WOODWARD, F.R.S., F.L.S., Sec. G. Soc.,

AND

HORACE B. WOODWARD, F.R.S., F.G.S.

NEW SERIES. DECADE V. VOL. VI.

JANUARY—DECEMBER, 1909.

LONDON:

DULAU & CO., LTD., 37 SOHO SQUARE, W.

1909.

HERTFORD :

PRINTED BY STEPHEN AUSTIN AND SONS, LTD.

LIST OF PLATES.

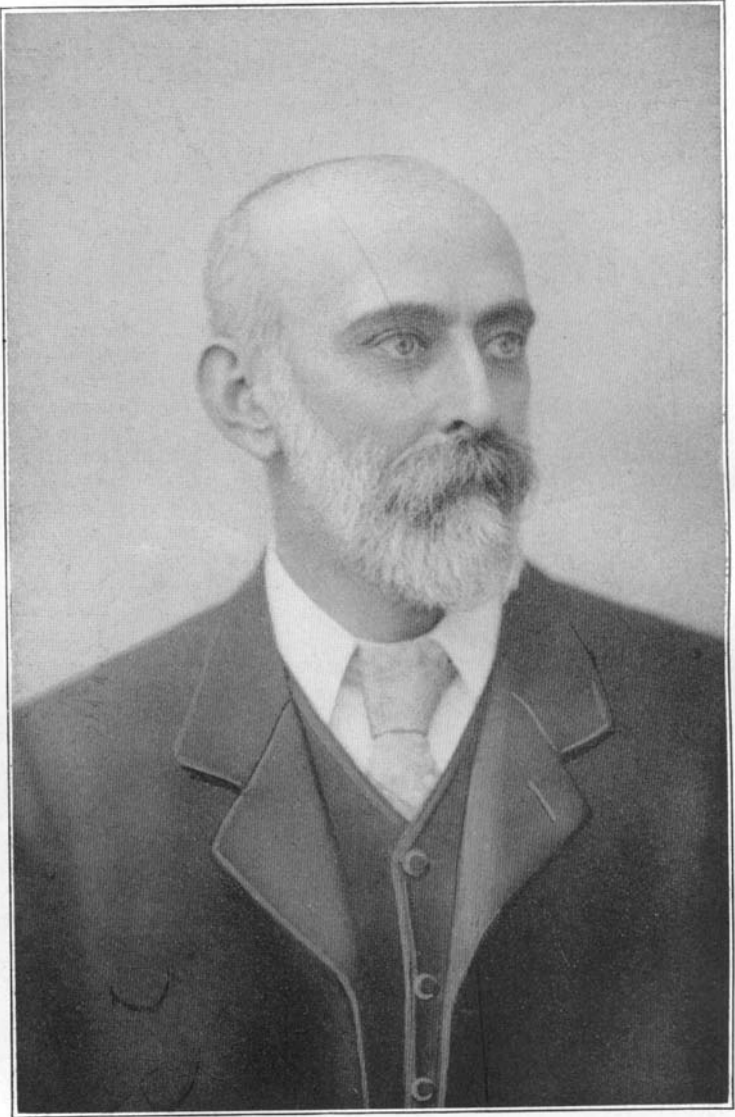
| PLATE | FACING PAGE |
|--|-------------|
| I. Portrait of J. J. Harris Teall, M.A., D.Sc., F.R.S., F.G.S. | 1 |
| II. <i>Puzosia curvatusilecata</i> , sp. nov., Turonian, Marlow, Bucks | 68 |
| III. <i>Phacops (Trimerocephalus) pentops</i> , sp. nov., Devonian, Cornwall ; <i>Allorisma concinna</i> , sp. nov. | 97 |
| IV. Wind-cut pebbles from Permian of Elgin, Moray, and North Island, New Zealand | 103 |
| V. Portrait of the late G. H. Kinahan, M.R.I.A. | 142 |
| VI. Dental apparatus of <i>Discoidea cylindrica</i> (Lamk.) | 152 |
| VII. Trilobites from Devon and Cornwall | 204 |
| VIII. <i>Tetracrinus (?) felix</i> , sp. nov. | 209 |
| IX. Portrait of R. H. Traquair, M.D., LL.D., F.R.S., V.P.R.S.E., F.G.S. | 241 |
| X. Microphotographs of Basic Plagioclase Felspars near Lennoxtown | 251 |
| XI. Microphotographs of Basic Plagioclase Felspars, Kilpatrick Hills and Arthur's Seat | 256 |
| XII. Thin Sections of Granophyric Diabase from the Kilsyth-Croy District, Dumbartonshire | 309 |
| XIII. <i>Pleuropholis lævissima</i> , Egerton, Solenhofen, Bavaria | 310 |
| XIV. New Chalk Bryozoa (Polyzoa) | 338 |
| XV. The Tarntaler Köpfe | 340 |
| XVI. The ridge of the Nederer ; Reckner (Serpentine), Kahlewand (Dolomite) | 342 |
| XVII. The scree-cone (Issl) under the Lower Tarntal ; Head of the Lower Tarntal | 344 |
| XVIII. Lake, lower end of the Upper Tarntal ; Ridge north of the Mieselkopf | 346 |
| XIX. Sketch-map of Egypt | 353 |
| XX. Nubian Sandstone Fossils from Egypt | 388 |
| XXI. <i>Inoceramus Balli</i> , sp. nov., from the Nubian Sandstone of Egypt . | 392 |
| XXII. Chalk Bryozoa (Polyzoa) | 398 |
| XXIII. Chalk Bryozoa (Polyzoa) | 400 |
| XXIV. Pumices and Pumiceous Scoria from explosive eruptions, Monte Somma and Vesuvius | 440 |

| PLATE | FACING PAGE |
|---|-------------|
| XXV. Pumices and Pumiceous Scoria from explosive eruptions, Monte Somma and Vesuvius | 442 |
| XXVI. Cephalopods from the Tarntal Köpfe, in Tyrol | 446 |
| XXVII. Sections of the Orange Grove Granites | 554 |
| XXVIII. <i>Bothrodendron</i> ; <i>Hastimima</i> | 485 |
| XXIX. View of mouth of the Aberedw Valley | 491 |
| XXX. Portrait of William Boyd Dawkins, M.A., D.Sc., F.R.S., F.S.A., F.G.S. | 529 |
| XXXI. Palæolithic Flint Implement from the Cambridgeshire Gravels, near Hildersham | 536 |

LIST OF ILLUSTRATIONS IN THE TEXT.

| | PAGE |
|--|----------|
| Cephalic shield or carapace of <i>Limulus Woodwardi</i> , Watson, sp. nov. | 15 |
| Sketch-map showing Pulau Ubin and Changi, Singapore | 18 |
| Dyke-like mass of enstatite-vogesite in the hornblende-granite of Pulau Ubin, Singapore | 20 |
| Map showing distribution of erratics in neighbourhood of essexite intrusion | 27, 29 |
| Section across the Hill of Beath near Dunfermline, Fife | 57 |
| <i>Cricetus vulgaris Runtonensis</i> , n.subsp., Norfolk Forest Bed | 111 |
| Map showing distribution of land and water in the Atlantic region during early Devonian times | 147 |
| Sketch-map showing probable directions of the sediment-bearing currents in Bunter times | 163 |
| Microscopic section of corundum-bearing rock | 166 |
| <i>Amphibamus grandiceps</i> , Cope | 218 |
| Section across the Bovey Basin through Heathfield | 260 |
| Map, North-Eastern Soudan | 267 |
| The Loop of <i>Dielasma</i> (seven figures) | 273 |
| Diagram of borings in Derbyshire and Notts Coal-field | 290, 292 |
| Sketch-map showing position of borings in Derbyshire and Notts Coal-field | 294 |
| Diagrammatic Section across the Kilsyth-Croy Area | 301 |
| Map of the vicinity of Port Sudan | 312 |
| <i>Homalostega anglica</i> | 337 |
| Diagram illustrating the section of the Tarntal Mass | 339 |
| Sketch-map of district between Tarntaler Köpfe and Matrei | 341 |
| Mandible of <i>Tetrabelodon dinotherioides</i> , sp. nov., Andrews | 348 |
| Sketch to illustrate a common mode of occurrence of 'Laterite' | 350 |
| <i>Myotragus balearicus</i> , gen. et sp. nov. | 386, 387 |
| Profile of skull of <i>Tapinocephalus atherstoni</i> , Owen | 401 |
| Palatal aspect of skull of <i>Tapinocephalus atherstoni</i> , Owen | 402 |
| Key Map showing position of Birch Tor, Haytor, etc. | 403 |
| Geological Map of Birch Tor Mining District, Dartmoor | 404 |
| Microphotograph of Specular Iron-Tinstone | 406 |
| Diagram illustrating structure of magnetic iron-ore deposits at Haytor | 408 |

| | PAGE |
|--|------|
| Diagram showing theoretical shells of contraction, compression, and fissuring on the earth's crust by process of cooling | 436 |
| Sketch-map showing course of pipe-line across the 'Permian' beds between Hagley and Frankley | 448 |
| Sketch-map showing <i>Spirorbis</i> -limestone outcrop in Keele Beds, Warwickshire | 453 |
| Portrait of Professor T. Rupert Jones, F.R.S., F.G.S. | 481 |
| Body-segments of <i>Eurypterus hibernicus</i> , Baily | 487 |
| Diagrammatic sketch of country around Aberedw | 492 |
| Sketch-map showing river-distribution in Mid-South Wales | 510 |



Yours faithfully
J. G. S. Seall