

SIMULTANEOUS MULTI-WAVELENGTH OBSERVATIONS OF MICROQUASARS (THE MINE COLLABORATION)

Y. Fuchs,¹ J. Rodriguez,^{1,2} I. F. Mirabel,¹ S. E. Shaw,^{3,2} P. Kretschmar,^{4,2} M. Ribó,¹ S. Chaty,^{5,1} V. Dhawan,⁶ I. Brown,⁷ R. Spencer,⁷ G. G. Pooley,⁸ and D. C. Hannikainen⁹

RESUMEN

Presentamos la colaboración internacional MINE (Multi- λ *INTEGRAL* Network) cuya meta es llevar a cabo observaciones en múltiples longitudes de onda de microcuasares de forma simultánea al satélite *INTEGRAL*. Los primeros resultados con GRS 1915+105 son muy esperanzadores y junto con los que se obtendrán en el futuro nos ayudarán a comprender la física de los fenómenos de acreción y eyección relacionados con los sistemas binarios compactos.

ABSTRACT

We present the international collaboration MINE (Multi- λ *INTEGRAL* Network) aimed at conducting multi-wavelength observations of microquasars simultaneously with the *INTEGRAL* satellite. The first results on GRS 1915+105 are encouraging and those to come should help us to understand the physics of the accretion and ejection phenomena around a compact object.

Key Words: STARS: INDIVIDUAL (GRS 1915+105) — X-RAYS: BINARIES

1. INTRODUCTION

Microquasars are X-ray binaries producing relativistic jets and thus appear as miniature replicas of distant quasars (Mirabel & Rodríguez 1999). Their emission spectra, variable with time, range from the radio to the γ -ray wavelengths. We present here the first multi-wavelength campaign on GRS 1915+105 involving the *INTEGRAL* satellite (3 keV–10 MeV). This campaign was conducted by the MINE (Multi- λ *INTEGRAL* Network, see <http://elbereth.obspm.fr/~fuchs/mine.html>) international collaboration aimed at performing multi-wavelength observations of galactic X-ray binaries simultaneously with *INTEGRAL*.

2. GRS 1915+105

The microquasar GRS 1915+105 is extremely variable at all wavelengths (see Fuchs et al. 2003a for a review). It hosts the most massive known stellar mass black hole of our Galaxy with $M=14\pm 4M_{\odot}$ (Greiner et al. 2001). In the radio it can show superluminal ejections at arcsec scales (Mirabel &

Rodríguez 1994) leading to a maximum distance of 11.2 ± 0.8 kpc (Fender et al. 1999), and a compact jet at milli-arcsecond scales (Dhawan et al. 2000).

We conducted a multi-wavelength observation campaign of GRS 1915+105 in spring 2003 (see Figure 1). Here we focus only on the April observations when ToO (Targets of Opportunity) were triggered by the MINE collaboration. This (nearly) simultaneous campaign involved the VLA, the VLBA, MERLIN and the Ryle Telescope (RT) in radio, the ESO/NTT in IR, *RXTE* and *INTEGRAL* in X/ γ -rays. More details and description of the April 2 observations can be found in Fuchs et al. (2003b).

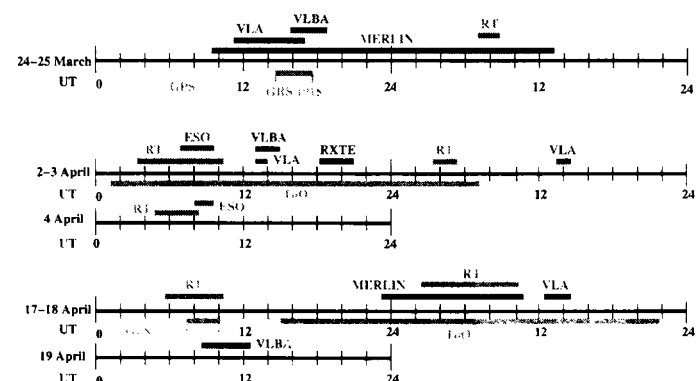


Fig. 1. Viewgraph of the observing campaign in spring 2003, indicating the dates, time and involved observatories (GPS = Galactic Plane Survey of *INTEGRAL*).

Our observations took place during the *plateau* state of GRS 1915+105 (Fender et al. 1999) i.e. quasi-

¹Service d'Astrophysique, CEA/Saclay, France.

²*INTEGRAL* Science Data Center, Versoix, Switzerland.

³University of Southampton, Southampton, UK.

⁴MPE, Garching, Germany.

⁵Université Paris 7, Paris, France

⁶National Radio Astronomy Observatory, Socorro, USA.

⁷Jodrell Bank, Manchester Univ., UK.

⁸Mullard Radio Astronomy Obs., Cambridge, UK.

⁹University of Helsinki, Helsinki, Finland.

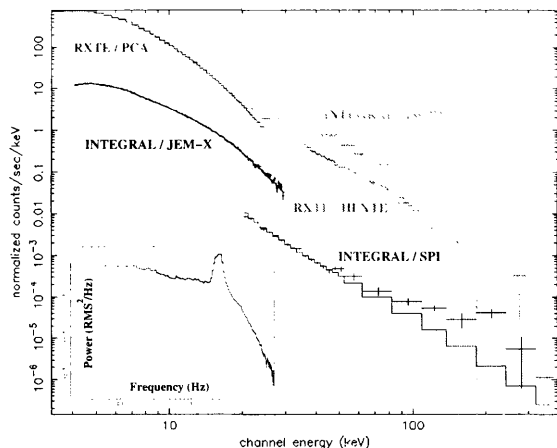


Fig. 2. X/ γ -ray spectra and fit of GRS 1915+105 measured with *RXTE* & *INTEGRAL* on April 2, 2003. The structures at $E > 50$ keV in the SPI spectrum are instrumental background lines not adequately corrected. The PCA power density spectrum (inset) shows a clear QPO at 2.5 Hz.

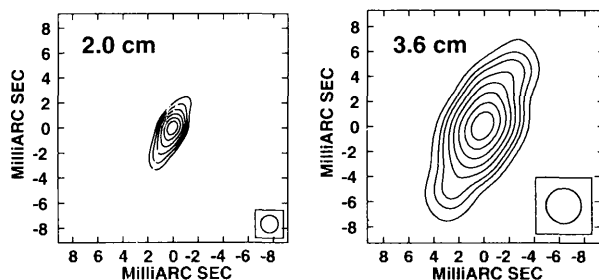


Fig. 3. VLBA images at 2.0 & 3.6 cm on April 2, 2003 showing the compact jet. 1 mas = 12 AU at 12 kpc.

steady *RXTE*/ASM (2–12 keV) flux ~ 50 cts/s and high steady radio level (> 100 mJy). On April 2 (Figure 2) & 18 the high energy emission shows a power law dominated spectrum ($> 60\%$ at 3–20 keV) with a photon index $\Gamma = 2.9$ and 2.75, respectively. This state is much softer than the classical low/hard state of the other BH binaries and is closer to the very high or intermediate states (McClintock & Remillard 2004). The *INTEGRAL* observations show that this power law spectrum extends up to 400 keV without any cutoff during this *plateau* state, consistent with the observations with *CGRO*/OSSE (Zdziarski et al. 2001). The estimated luminosity on April 2 & 18 is respectively $\sim 7.5 \times 10^{38}$ ergs $^{-1}$ overestimated using the PCA and $\sim 2.8 \times 10^{38}$ ergs $^{-1}$ using JEM-X, corresponding to 40% and 16% of the Eddington luminosity for a $14M_{\odot}$ black hole. As shown in Figure 2, a very clear Quasi-Periodic Oscillation (QPO) at 2.5 Hz with a 14% rms level was observed in the *RXTE*/PCA signal, which is consistent with the previous observations of the *plateau* state (see also Rodriguez et al. 2003).

The VLBA high resolution images on April 2 (Figure 3) and 18 show the presence of a compact

radio jet with a ~ 7 –14 mas length (85–170 AU at 12 kpc). The optically thick synchrotron emission from this jet is responsible for the high radio levels. On April 18 the MERLIN image shows a radio extension ($\sim 0.3''$) which is probably the trace of a superluminal ejection which occurred on April 4.

On April 2 the source was fairly bright in near-IR with an excess of 75–85% in the K_s -band compared to the $K = 14.5$ –15 mag. of the K-M giant donor star of the binary. According to the spectral energy distribution, this IR excess is compatible with a strong contribution from the synchrotron emission of the jet extending from the radio up to the near-IR. Different components, however, contribute to the IR in addition to the jet, such as the donor-star, the external part of the accretion disc or a free-free emission.

3. CONCLUSIONS AND PROSPECTS

Here for the first time, we observed simultaneously all the properties of the *plateau* state of GRS 1915+105: a powerful compact radio jet, responsible for the strong steady radio emission and probably for a significant part of the bright near-IR emission, as well as a QPO (2.5 Hz) in the X-rays and a power law dominated X-ray spectrum with a $\Gamma \sim 3$ photon index up to at least 400 keV. Forthcoming works will study detailed fits of the X-ray spectra, to determine for example whether this power law is due to an inverse Compton scattering of soft disc photons on the base of the compact jet or not. In order to better understand the unusual behaviour of GRS 1915+105, we need to carry out similar simultaneous broad-band campaigns during the other states, in particular during the sudden changes that correspond to powerful relativistic ejection events.

REFERENCES

- Dhawan, V., Mirabel, I. F., & Rodríguez, L. F. 2000. *ApJ*, 543, 373
- Fender, R. P., Garrington, S. T., McKay, D. J., et al. 1999, *MNRAS*, 304, 865
- Fuchs, Y., Mirabel, I. F. & Claret, A. 2003a, *A&A*, 404, 1011
- Fuchs, Y., Rodríguez, J., Mirabel, I. F., et al. 2003b, *A&A*, 409, L35
- Greiner, J., Cuby, J. G. & McCaughrean, M. J. 2001. *Nature*, 414, 522
- McClintock, J. E. & Remillard, R. A. 2004, in 'Compact Stellar X-Ray Sources', eds. W.H.G. Lewin and M. van der Klis, CUP, astro-ph/0306213
- Mirabel, I. F. & Rodríguez, L. F. 1994, *Nature*, 371, 46
- Mirabel, I. F. & Rodríguez, L. F. 1999, *ARA&A*, 37, 409
- Rodríguez, J., Hannikainen D., et al. 2004, this volume
- Zdziarski, A. A., Grove, J. E., Poutanen, J., et al. 2001, *ApJ*, 554, L45