

Evaluating an Information Campaign about Rural Development Policies in FYR Macedonia

Martin Huber, Ana Kotevska, Aleksandra Martinovska Stojcheska, and Anna Solovyeva

This study investigates the effects of a local information campaign on farmers' interest in a rural development programme (RDP) in the former Yugoslav Republic of Macedonia. The results suggest that while our intervention succeeded in informing farmers, it had a negative, albeit only marginally significant, effect on the reported possibility of using future RDP support. This puzzling result can be attributed to increased awareness of administrative burden associated with RDP participation. An additional heterogeneity analysis suggests the negative effect is driven by unprofitable farmers who are averse to any administrative encumbrance, for whom upfront cofinancing of an RDP is untenable.

Key Words: field experiment, FYR Macedonia, information provision, rural development, treatment effects

JEL codes: O13, Q18

Introduction

The agricultural sector plays an important role in the rural economy of the Western Balkans. In this paper, we focus on the former Yugoslav Republic (FYR) of Macedonia, where agriculture, together with forestry and fishing, accounts for about 15 percent of GDP and 17 percent of total employment (State Statistical Office of the Republic of Macedonia 2015). While the agricultural sector is of importance and has naturally high development

Martin Huber is a professor in the Department of Economics, University of Fribourg, Switzerland. Ana Kotevska is an associate professor and Aleksandra Martinovska Stojcheska is an associate professor at the Institute of Agricultural Economics, Faculty of Agricultural Sciences and Food, University Ss. Cyril and Methodius in Skopje, FYR Macedonia. Anna Solovyeva is a PhD candidate in the Department of Economics, University of Fribourg. *Correspondence:* Martin Huber, Department of Economics, University of Fribourg, Bd. de Pérolles 90, Fribourg, 1700 Switzerland, Email martin.huber@unifr.ch

This project was supported by the "Regional Research Promotion Programme – Western Balkans," which is operated by the Interfaculty Institute for Central and Eastern Europe (IICEE) at the University of Fribourg and funded by the Swiss Agency for Development and Cooperation (SDC), Federal Department of Foreign Affairs. The authors benefited from constructive comments by two anonymous referees and the editor Dr. Hung-Hao Chang. We are also grateful to seminar participants in Fribourg for their valuable suggestions. All opinions expressed in this article are solely those of the authors and do not necessarily represent the views of the sponsoring agency.

Agricultural and Resource Economics Review 48/1 (April 2019) 117–141

© The Author(s) 2018. This is an Open Access article, distributed under the terms of the Creative Commons Attribution licence (<http://creativecommons.org/licenses/by/4.0/>), which permits unrestricted re-use, distribution, and reproduction in any medium, provided the original work is properly cited.

potential, it suffers from a problem common to many post-socialist countries – low productivity. To combat negative factors hindering rural growth, and to increase agricultural competitiveness, environmental protection, and quality of life in rural areas, the National Strategy for Agriculture and Rural Development was adopted in 2007. The new strategy defines the country's long-term goals aligning Macedonian rural development policy with the common agricultural policy (CAP) of the European Union (EU), in particular with its second pillar, rural development programmes (RDPs) (Dimitrievski et al. 2014). RDPs are seven-year programs comprising various support measures such as financing of planning, training, and advice; annual management payments; and investment aid (European Commission 2005, Dwyer and Powell 2016). While EU member states must follow common strategic goals for rural development and agriculture, they adjust the design and implementation of RDPs to their country-specific contexts (Dwyer et al. 2012).

Our study examines how a local campaign informing farmers about RDP measures affects their knowledge and interest in taking part in the program in FYR Macedonia. In the course of the campaign, a (randomly) selected group of farmers received a brochure describing the RDP measures and the application process. Based on evidence reported in previous literature (European Commission 2013, IPARD II 2015) and informal exchanges with agricultural specialists in FYR Macedonia (Prof. D. Dimitrievski, June 16, 2015, personal communication), we presume that providing information about existing RDP measures in person can increase farmers' awareness about the program and, hence, interest in participating. Dwyer and Powell (2016) emphasize the relevance of information-search cost, among other transaction costs, for RDP performance, pointing to a lack of research on “the costs arising from asymmetries in perception and understanding of programmes” (Dwyer and Powell, 2016, 548). Such asymmetries are possibly present in FYR Macedonia where RDP uptake is low, despite the availability of governmental means for rural development. Our interest lies in determining if providing farmers with information (hence lowering information-search cost and improving the understanding of procedures), affects their intention to participate in the program. According to policy recommendations drafted in Dwyer and Powell (2016), providing support and advice helping beneficiaries prepare and submit applications is crucial for effective use of funding.

Previous studies in development and agricultural economics focus on several aspects of information provision to farmers, including the role of media and extension services in agricultural information access (Hassan et al. 2010, Galadima 2014), farmers' information needs (Lwoga, Stilwell, and Ngulube 2011), and their perceptions of the effectiveness of various information sources (Achuonjei, dos Santos and Reyes 2003). The majority of these investigations are descriptive and do not aim at estimating the size of information provision effects, while a (nonrandomized) survey is the most

commonly employed method. While they collect useful information on farmers' attitudes and behavior, such surveys do not permit a causal interpretation of information provision effects on policy perception and participation. Another issue is limited generalizability, because all cited studies are conducted in developing countries of Africa and Asia, where political and economic background, agricultural practices, rural situations, and information provision might differ substantially from those in transition economies such as FYR Macedonia.

In its research design, our paper is related to a growing body of experimental literature on the effectiveness of randomized information campaigns in various fields of economics, e.g., public economics (Duflo and Saez 2003, Chetty and Saez 2013), labour economics (Altmann et al. 2015, Liebman and Luttmer 2015), and environmental economics (Ferraro and Miranda 2013, Benders et al. 2006). Most of these investigations find small to moderate effects of information provision on the outcomes of interest (see, for instance, Chetty and Saez 2013, Altmann et al. 2015). However, the effectiveness of randomized information campaigns depends ultimately on the field of study, the context, the exact implementation of an intervention, quality and quantity of provided information, and subjects' motivation (Saez 2009, Feld et al. 2013, Altmann and Traxler 2014).

This paper contributes to the literature in that it evaluates how information provision affects farmers' intention to participate in the RDP. To the best of our knowledge, no such study has yet been done in the context of transition economies, in the Western Balkans in particular. From a policy perspective, the paper is interesting as it could shed light on how to enhance RDP participation by lowering farmers' information acquisition costs and improving agricultural policy implementation in FYR Macedonia. If information provision does indeed increase farmers' intention to apply for the RDP, this provides policy makers with a relatively inexpensive tool to increase participation rates. Our study also hints at further potential reasons for nonparticipation that appear interesting from a policy perspective, namely: (1) the administrative burden of RDP projects as perceived by farmers, and (2) a specific financing scheme of some RDP measures requiring farmers to provide up to 50 percent of the total investment up front, to be reimbursed upon realized costs.

Institutional Context

Challenges in Rural Areas of FYR Macedonia

FYR Macedonia is a small, landlocked, transitional economy in the Western Balkans region. The country experienced a sharp economic decline after the breakup of Yugoslavia in 1990 that affected all sectors, including agriculture, the main economic activity in rural areas. A number of socioeconomic issues

still persist in rural Macedonia a quarter of century later, presenting a challenge for the successful implementation of rural development policies. These problems include farm fragmentation and small-scale private farming, leading to inefficient use of agricultural land (Dimitrievski et al. 2014), poor diversification of economic activities, insufficient investments in infrastructure, and limited access to markets and sources of finance (Kotevska et al. 2015). On the demographic side, the ongoing trend of out-migration from rural areas has led to a situation where villages are left with a larger population of older and less-educated residents (European Commission 2013). Unfavorable education structure, poor qualifications, and insufficient professional skills of the economically active population are considered to be among the factors limiting the potential of rural development (Kotevska et al. 2015). This further deepens the gap between urban and rural standards of living. Today, almost half of the country's poor population resides in rural areas (European Commission 2013). Thus, the crucial question is of how the government can effectively use policy instruments, including the RDP, to address the problems of rural development and reverse the persistent negative trends.

Agricultural Policy and RDP

After its independence from Yugoslavia, FYR Macedonia experienced turbulent agricultural policies with many reforms and ad hoc policy decisions. In 2005, the country received the status of an EU candidate. This new trend of European integration brought about changes in the national agricultural policy which had to be adjusted to the CAP. Therefore, FYR Macedonia focused on harmonization of the national policy for development of agriculture and rural areas. The rural development policy is to a large extent aligned with (the second pillar of) the CAP. It has four priority areas and instruments to support them: (1) increasing the competitiveness of the agricultural and forest holdings, (2) protecting and improving the environment and rural areas, (3) improving the quality of life and encouraging diversification of economic activities in rural areas, and (4) supporting local development (Dimitrievski et al. 2014, 128). In addition, rural development is financed by the EU via the Instrument for Pre-Accession Assistance for Rural Development (IPARD) (Dimitrievski et al. 2014), which is not investigated in this study.

After the 2007 introduction of the National Strategy for Agriculture and Rural Development, the Ministry of Agriculture, Forestry and Water Economy has been preparing and announcing annual programs for rural development. The rural development budget is planned on an annual basis and realized through up to eight calls per year. However, because investments require time to be organized and implemented, and due to limited institutional capacity, budget transfers planned for one year are often conducted only in successive years.

In the period from 2008 to 2014, projects of about EUR 31.4 million were funded under the national program for rural development (see [Table 1](#)). In the first few years of implementation, the budget was mainly used to increase competitiveness of agricultural holdings, mostly through farm modernization of primary producers. In 2014, a substantial increase in the budget was devoted to the agrifood processing sectors and for improving the quality of life and infrastructural improvement of rural areas. According to information provided by the Agency for Financial Support in Agriculture and Rural Development, in 2014, funds for increasing competitiveness were allocated to 700 applicants (farmers and companies) of relatively small investments averaging EUR 4,460, whereas funds for improving quality of life in rural areas were used by 80 municipalities, averaging EUR 64,470 (APM Database 2015).

Study Design

Our study is based on an information campaign experiment conducted in the Southeast of FYR Macedonia in May–June 2015. A brochure was prepared for this purpose in cooperation with the Agency for Financial Support of Agriculture and Rural Development of the Republic of Macedonia. The assessment of the campaign's effectiveness to promote interest in the RDP is motivated by the relatively low number of applications, despite the government's willingness to support the agricultural sector and the availability of funding.

The causal effect of information provision was intended to be evaluated by means of an experiment. We planned to randomly select 600 farmer households in the largest villages in the chosen region. Every second household on a list of households per village would be treated, while the remaining households would comprise the control group. The treatment probability would thus be asymptotically independent of farmers' characteristics. The treatment group would receive an information brochure on selected RDP measures delivered in person, whereas the control group would receive no such brochure. A survey would be conducted for the entire sample about two weeks later, collecting information on personal and farm characteristics, previous experiences with the RDP application and participation, awareness about the RDP and its potential benefits for the community and the farm, and, importantly, on the farmers' intention to apply for RDP measures and to cofinance RDP projects.

The actual implementation of the campaign deviated from the initial plan. Due to an unstable political situation and generally low levels of trust in the country, data collectors did not manage to fully follow the protocol. Reportedly, farmers were reluctant to communicate with strangers and accept brochures when the surveyors tried to approach the farmers at their homes. Therefore, instead of going to every second house when delivering the brochure, and going house to house to conduct the survey in preselected villages, the surveyors

Table 1. Annual Payments for Structural and Rural Development in FYR Macedonia per Priority Area (2008–2014, million EUR)

	2008	2009	2010	2011	2012	2013	2014	Sum
Increasing the competitiveness of the agricultural and forest holdings:	2.2	1	6.2	0	3.2	0.9	6.2	19.6
–Farm modernization	1.5	0.9	5.2	0	2.5	0	3	13.1
–Agrifood support (processing, marketing)	0.6	0.1	0.9	–	0.7	0.9	3.2	6.5
Protecting and improving the environment and rural areas	0.4	0	0.2	–	–	–	0.8	1.4
Improving the quality of life and encouraging diversification of economic activities in rural areas	–	0	0.6	0.1	0.2	1	8.5	10.4
Structural and rural development measures (Total)	2.6	1	6.9	0.1	3.4	2	15.5	31.4

Source: Own calculation based on data in the Macedonian APM database (APM Database 2015).

distributed them in several villages in public places, such as local shops, markets, pharmacies, fields, gardens, and water supply stations. They distributed the brochures in person and collected farmers' contact information to survey them 1–2 weeks later. Reportedly, the brochures were more likely to be given to younger farmers, owners of small farms, and those who had not had experience with RDP participation, who were supposedly the types of farmers one predominantly meets in public places in rural areas. The face-to-face survey for the control group took place while the brochures were still being distributed to the treatment group. Once brochure dissemination was completed, the treatment group was surveyed. All treated individuals were interviewed, so there was no unit nonresponse. In the control group, an interviewer would go to the next available household in case of a refusal. The violations of the experimental design required the restriction of the evaluation sample to a specific subset of observations and the application of estimation methods that account for the fact that the intervention was not properly randomized.

The distributed brochure (see Appendix B) contains information about four selected RDP measures. The face-side of the brochure presents the title and the logo of the Agency for Financial Support in Agriculture and Rural Development, the phrase “Every year the Government of the Republic of Macedonia prepares financial support programs for rural development,” and three major goals of the program: modernization and structural adjustment of the agrifood sector; support of economic activities related to nature protection and development of rural areas, and transition of national agricultural policy towards the EU CAP. The rest of the brochure describes selected RDP measures along with eligibility criteria, application processes, required documents, and contact details for the responsible authorities. The selected RDP measures include (1) *Support of young farmers* (Measure 112), (2) *Investments in farm modernization* (Measure 121), (3) *Investments in increasing the economic value of forestry* (Measure 122), and finally (4) *Support of economic associations of farms for joint agricultural activity* (Measure 131). Three of the four listed measures require cofinancing from the farmers' side. Measures 121 and 122 require 50 percent cofinancing by the farmer, whereas measure 131 requires up to 20 percent, depending on the submeasure (Zakon za Zemjodelstvo i Ruralen Razvoj 2010: 17–20). Importantly, the farmer must first personally finance the full amount of investment while actual RDP support is received upon the realized costs, if previously approved to be eligible. Measure 112 represents a grant of up to 600,000 Macedonian denars (EUR 9,760)¹ paid to a successful application in three instalments over a three-year period (hence, cofinancing is not required). The brochure targets various groups of farmers and provides the

¹ Based on the year-end 2014 exchange rate (National Bank of the Republic of Macedonia 2017).

most relevant information regarding RDP measures and the application process. If farmers wanted to obtain more details on the program, the contact information of the responsible authorities could be found on the back of the brochure.

Data and Balancing Tests

In our survey, cross-sectional data on 597 farmer households (represented by a household head), including 292 treated and 305 nontreated farmers, were collected. The dataset contains observations from 34 villages of the Southeastern region.

Respondents were asked about their attitudes and opinions about the RDP measured on a Likert scale ranging from 1 “strongly disagree” to 5 “strongly agree.” The variables generated from these questions are used as outcomes in our analysis. One group of questions relates to farmers’ willingness to apply and participate in the program in the near future (3–5 years): “How do you assess the *possibility* to use RDP support for your household (e.g., for mechanization, equipment purchases) in the next 3–5 years?” and “How do you assess your *intention* to use RDP support for your household in the next 3–5 years?” Another group of statements covers awareness and opinions about RDP application process and participation: “I have enough information to independently prepare the application (procedure and documents),” “I have enough knowledge and experience to independently prepare the application (procedure and documents),” “The RDP application (procedure and documents) is easy,” and “The RDP increases the administrative work.” Information on farmers’ previous experiences with RDP was collected, including application for the program in the last three years, use of support in the last three years, and received value of support (in denars).

Background characteristics were also gathered, describing household size; household head’s age, sex, educational attainment (primary education, high school, or college/university and higher), and experiences with farming activities, including number of years spent working on a farm, and the primary occupation (whether in agriculture or other industries). Information related to farming activities was available from the survey: farm profitability in the last three years (measured on a scale from 1 to 5: “very unprofitable,” “moderately unprofitable,” “break-even,” “moderately profitable,” “very profitable”), ease of getting a loan (1 to 5: “very difficult,” “difficult,” “medium,” “easy,” “very easy”), dependence on subsidies to break even financially (1 to 3: “not dependent,” “slightly dependent,” “very dependent”), frequency of cooperation with other agricultural producers (1 to 5: “never,” “rarely,” “not sure,” “sometimes,” “always”), share of agricultural production sold on a market, share of household income from farming, whether or not there are additional workers besides family members working on the farm, total farmed area (in hectares), and total livestock (in heads). Finally, the data

contain binary indicators for receiving the brochure, reading it, and learning new facts about RDP measures.

Balancing *t*-tests comparing the mean values of the characteristics between the treatment and control groups revealed statistically significant (at the 5 percent level) differences in age, education, years in farming, having additional workers on the farm, the share of agricultural production sold on a market, farm profitability, farm capacity (in hectares), and some missing indicators, which points to a failure of randomization. For this reason, we use a restricted sample for our evaluation based on the information about the brochure assignment process (i.e., brochures were more likely distributed to younger farmers, owners of small farms, and those who had not participated in the RDP previously) provided by the field personnel and reflected in the data. Specifically, we disregard observations from older age groups and only keep prime-age household heads that are up to 55 years old. Furthermore, we only include households that have not previously received RDP support and do not have any employees working on their farm.

As demonstrated in [Table 2](#), which provides descriptive statistics and balancing *t*-tests for the covariates, the subsample is relatively well balanced in terms of mean values of a range of selected characteristics. Apart from primary education, farm profitability and a missing indicator for the share of agricultural production sold on a market, no mean is statistically significantly different across treatment states at the 5-percent level. We consider this subsample in our analysis of the brochure's effect outlined further below.

The evaluation sample includes 257 observations, out of which 156 are treated and 101 comprise the control group. As can be seen from [Table 2](#), farmers are, on average, about 45 years old, predominantly males, with a high school degree, who have spent almost half of their life working in farming. For half of the farmers, agriculture is the main occupation. They sell most of what they produce on the market, and more than half of their income comes from farming. Farms in the sample are, on average, moderately profitable or break-even and somewhat dependent on subsidies. [Table 3](#) provides additional insight into how our evaluation sample compares to the average farm household in the Southeast region and in the entire FYR Macedonia, in terms of characteristics available from the 2013 Farm Structure Survey. Household heads in the selected sample are typically younger, more educated, more likely to be female, and their household size tends to be larger, compared to the respective averages in the region and country. The average farm size in the sample is comparable to the regional and national averages but smaller in terms of total livestock.

Item nonresponse was moderate. In 21 cases (8.2 percent) the educational level was reported in the selected sample. The number of missing values in other covariates is even smaller. For the purpose of our analysis, we introduce binary indicators for missing values in covariates while replacing actual missing values with zeros.

Table 2. Mean Covariate Values by Treatment Status in the Selected Subsample

Variables	Total subsample	Control (C)	Treatment (T)	Difference (T-C)	p-value
Age	44.611 (7.413)	45.703 (7.467)	43.904 (7.316)	-1.799 [0.946]	0.058
Male (binary)	0.755 (0.431)	0.723 (0.450)	0.776 (0.419)	0.053 [0.056]	0.345
Education: primary (binary)	0.078 (0.268)	0.139 (0.347)	0.038 (0.193)	-0.100 [0.038]	0.009
Education: high school (binary)	0.708 (0.455)	0.673 (0.471)	0.731 (0.445)	0.058 [0.059]	0.330
Education: college/university (binary)	0.132 (0.339)	0.139 (0.347)	0.128 (0.335)	-0.010 [0.044]	0.812
Education missing (binary)	0.082 (0.274)	0.050 (0.218)	0.103 (0.304)	0.053 [0.033]	0.105
Household head's occupation: agriculture (binary)	0.514 (0.501)	0.535 (0.501)	0.500 (0.502)	-0.035 [0.064]	0.589
Household head's occupation missing (binary)	0.016 (0.124)	0.020 (0.140)	0.013 (0.113)	-0.007 [0.017]	0.674
Years in farming	22.006 (8.517)	22.356 (9.485)	21.779 (7.851)	-0.578 [1.133]	0.611
Household size	4.121 (1.158)	4.040 (1.363)	4.173 (1.004)	0.133 [0.158]	0.398
Profitable farm ^a	3.549 (0.572)	3.426 (0.638)	3.628 (0.511)	0.202 [0.075]	0.008

Continued

Table 2. Continued

Variables	Total subsample	Control (C)	Treatment (T)	Difference (T-C)	p-value
Subsidy dependent ^b	2.078 (0.806)	2.168 (0.837)	2.019 (0.783)	-0.149 [0.104]	0.154
Subsidy dependent missing (binary)	0.004 (0.062)	0.000 (0.000)	0.006 (0.080)	0.006 [0.006]	0.319
Frequency of cooperation ^c	3.700 (1.526)	3.594 (1.531)	3.769 (1.523)	0.175 [0.195]	0.370
Frequency of cooperation missing (binary)	0.004 (0.062)	0.010 (0.100)	0.000 (0.000)	-0.010 [0.010]	0.318
Share of agricultural production sold on a market	87.008 (16.853)	87.891 (15.537)	86.436 (17.678)	-1.445 [2.095]	0.488
Share of agricult. prod. sold missing (binary)	0.016 (0.124)	0.000 (0.000)	0.026 (0.159)	0.026 [0.013]	0.045
Share of income from farming	51.490 (23.166)	53.297 (22.725)	50.321 (23.445)	-2.977 [2.938]	0.312
Share of income from farming missing (binary)	0.008 (0.088)	0.000 (0.000)	0.013 (0.113)	0.013 [0.009]	0.157
Capacity: farmed area (ha)	1.638 (1.097)	1.695 (1.129)	1.601 (1.078)	-0.094 [0.142]	0.508
Capacity: total livestock (number of heads)	1.115 (2.762)	1.184 (2.786)	1.071 (2.754)	-0.113 [0.354]	0.750
Number of observations	257	101	156	-	-

Notes: Standard deviations are in parentheses. Robust standard errors are in brackets.

^a*Profitable farm*: 1 = “very unprofitable;” 2 = “moderately unprofitable;” 3 = “break-even;” 4 = “moderately profitable;” 5 = “very profitable.”

^b*Subsidy dependent*: 1 = “not dependent;” 2 = “slightly dependent;” 3 = “very dependent.”

^c*Frequency of cooperation*: 1 = “never;” 2 = “rarely;” 3 = “not sure;” 4 = “sometimes;” 5 = “always.”

Table 3. Mean Values of Characteristics at Sample, Regional, and National Levels

Variables	Evaluation sample	Southeast region	FYR Macedonia
Average age	44.6	55.5	57.4
Male	75%	88%	89%
Education: no or incomplete primary	-	22%	12%
Education: primary	8%	34%	35%
Education: high school	71%	38%	47%
Education: college/university	13%	6%	6%
Household size (number of members)	4.1	3.4	3.6
Average farm size (total ha/farm)	1.6	1.5	1.8
Capacity: total livestock (units/farm)	1.1	2.0	2.0
Number of individual farms	257	25,779	170,580

Source: Own 2015 survey and Farm Structure Survey 2013.

Estimation Methods

To evaluate the impact of the information brochure on farmers' willingness to apply and participate in the RDP, as well as on other outcome variables, four econometric methods are used: the simple difference in means, OLS, and two non-/semiparametric estimation techniques, namely, propensity score matching and nonparametric multivariate reweighting (entropy balancing). Formally, we estimate regression specifications of the following kind:

$$(1) \quad Y_i = \beta_0 + \beta_1 T_i + \beta_2 X_i + \epsilon_i,$$

where the variable Y_i measures various outcomes, e.g., farmers' intention to apply for the RDP, for individual i . T_i is a binary indicator that takes a value of 1 if individual is "treated," i.e., received the information brochure, while β_1 is the coefficient of interest, as it captures the treatment effect. X_i is the vector of covariates used in the OLS regression, propensity score estimation, and entropy balancing.

First, we consider the simple differences in mean outcomes between treatment and control groups. If randomization had been successful, both groups would have been comparable in all their background characteristics (both observed and unobserved), and the differences in mean outcomes across treatment groups would have been unbiased estimates of the average casual effects of the intervention. However, the randomization was not successful, and even after restricting the original sample, some characteristics are not fully balanced across treatment states. For this reason, the simple

difference is unlikely to provide an unbiased estimate of the average casual treatment effect.

As an alternative strategy, we control for a range of observed characteristics X_i in the estimation. We rely on the conditional independence assumption (CIA), which states that after conditioning on observed characteristics that jointly affect the treatment probability and the outcome, the independence of the treatment and the potential outcomes hold, such that there are no unobservables jointly affecting the treatment and the outcome (Imbens 2004: 7):

$$(2) \quad (Y(0), Y(1)) \perp T | X,$$

where $Y(0)$ and $Y(1)$ are potential outcomes under, respectively, nontreatment and treatment, T is a binary treatment indicator and X is the covariate set.²

The probability of receiving the brochure was reportedly negatively associated with farmers' age, farm capacity, and previous participation in the RDP. This is why it is important to control for these and related characteristics. Our dataset contains information about farmers' age. Farm capacity can be controlled by including variables such as farmed area and total livestock. Farmers who previously participated in the program are excluded from the evaluation sample.

However, we believe it is critical to account for additional characteristics that can be simultaneously related to the outcome variables and the treatment probability, because the brochures were more often distributed to relatively poorly informed farmers. Educational level is likely to affect farmers' awareness about the RDP and, hence, their potential interest in applying for agricultural support. As mentioned in a recent version of The National Programme for Agriculture and Rural Development, Macedonian small-scale farmers appear to have low educational levels (European Commission 2013: 27). Because the brochure was more often distributed to the owners of smaller farms, it is possible that those who received it had lower educational levels. We also suspect that the relative importance of farming and farm profitability might have affected the probability of receiving the brochure and, at the same time, intention to participate. Individuals for whom farming is the main occupation and whose income is mostly generated by farming should be more interested in obtaining information about the RDP. For this reason, household's head occupation, the share of agricultural production sold on the market, and the share of income from farming are included in the regressions. Furthermore, farm profitability and subsidy dependence should

² The observed outcome is then defined as $Y_i = (1 - T_i) \cdot Y_i(0) + T_i \cdot Y_i(1)$, which can be rewritten in the form of equation (1). Unconfoundedness is equivalent to $\varepsilon_i \perp T_i | X_i$ (see Imbens 2004: 7).

be controlled, because some RDP measures require cofinancing. Given that it is easier for profitable and subsidy-independent farmers to cofinance a project, they might be more interested in learning about RDP measures and obtaining the brochure. Table 2 provides supporting evidence for this, because treated farmers are, on average, more likely to have profitable farms and be less subsidy dependent. Finally, we include an indicator for the frequency of cooperation with other farmers as a control variable. More cooperative farmers might be more socially open and active, which increases their chances of receiving the brochure and being interested in the RDP.

Our first approach to control for the observed confounders is a standard OLS regression of the outcome on a constant, the treatment indicator, and the covariates. However, an important drawback of OLS is that it assumes a linear relationship between regressors and the outcome variable, which may be violated in practice. Hence, we also apply more flexible semi- and nonparametric estimators, relying on less rigid functional form assumptions.

One of the most well-known approaches for the evaluation of treatment effects in nonrandomized studies is propensity score matching. The idea is to find for each treated observation one or more nontreated units with a similar conditional treatment probability, i.e., propensity score. In a general form, the treatment effect ($\hat{\Delta}_{\text{match}}$) is defined as the average difference in the outcomes of the treated and the weighted nontreated matched units (see, for instance, Smith and Todd 2005):

$$(3) \quad \hat{\Delta}_{\text{match}} = \frac{1}{N_1} \sum_{\{i: T_i=1\}} (Y_i - \sum_{\{j: T_j=0\}} W_{ij} Y_j),$$

where W_{ij} is the weight given to the outcome of a nontreated observation j , when j is matched to a treated unit i , and N_1 is the number of treated observations. In this study, we conduct semiparametric kernel matching. First, the propensity score: $p(X) = \Pr(T=1|X)$ is estimated in a probit regression (see Table 1A in Appendix A for the propensity score specification). Then, kernel regression of the outcome on the estimated propensity score among the nontreated is conducted to estimate the conditional mean outcome given the propensity score without treatment, $E(Y|T=0, p(X)) =: m(0, p(X))$ (Huber, Lechner and Wunsch 2013). Formally,

$$(4) \quad \hat{m}(0, \hat{p}(X_i)) = \frac{\sum_{\{j: T_j=0\}} K(\hat{p}(X_i) - \hat{p}(X_j)/h) Y_j}{\sum_{\{j: T_j=0\}} K(\hat{p}(X_i) - \hat{p}(X_j)/h)},$$

where $\hat{m}(0, \hat{p}(X_i))$ is an estimate of $m(0, p(X))$, K is a kernel function and h is a bandwidth operator. In the estimations, the Epanechnikov kernel and a

bandwidth of 0.6 is used.³ Thereafter, the treatment effect for the treated is estimated by averaging the estimated function by the empirical distribution of $p(X)$ for the treated:

$$(5) \quad \hat{\Delta}_{\text{kernel_match}} = \frac{1}{N_1} \sum_{\{i: T_i=1\}} (Y_i - \hat{m}(0, \hat{p}(X_i))).$$

Matching estimators rely on a common support assumption that ensures units with comparable characteristics exist in both treatment states. Figure 1 provides the distribution of the estimated propensity score before and after matching. The upper panel shows some non-overlapping areas in the distribution of the propensity score in the treated and nontreated groups prior to matching. Matching achieves a decent overlap in the propensity score distributions, as illustrated by the lower panel of Figure 1. Only four observations in the treatment group lie outside the common support and therefore need to be excluded from propensity score matching. Additionally, Table 4 presents post-matching mean covariate values by treatment status, standardized differences, and percentage-reduction in standardized differences compared to the original (unmatched) sample, and balancing t -tests on the matched sample. Based on standardized differences and the percentage-reduction in standardized differences, we conclude that matching considerably improved balance in all characteristics (the average reduction in standardized differences was 75 percent), except for farm size.

The next estimation technique employed in our analysis is entropy balancing,⁴ a fully nonparametric multivariate reweighting method proposed by Hainmueller (2012). It does not rest on any propensity score model, but on user-specified initial base weights for nontreated observations. Reweighting is based on computing new weights in a way that the Kullback-Leibler divergence from the baseline weights is minimized, subject to the balancing constraints. Weights of the nontreated are defined in such a way that exact balance in prespecified covariate moments like the mean is attained for the reweighted nontreated group and the treated. Formally, the weights are chosen by minimizing the following loss function, while balancing the (multidimensional) vector of covariates X_i :

$$(6) \quad \min_{w_i} \sum_{\{i: T_i=0\}} h(\omega_i)$$

subject to the balance constraint

³ These are the default options of the STATA command `psmatch2` for the kernel type and bandwidth.

⁴ The analysis is run in STATA using package “`ebalance`” developed by Hainmueller and Xu (2013).

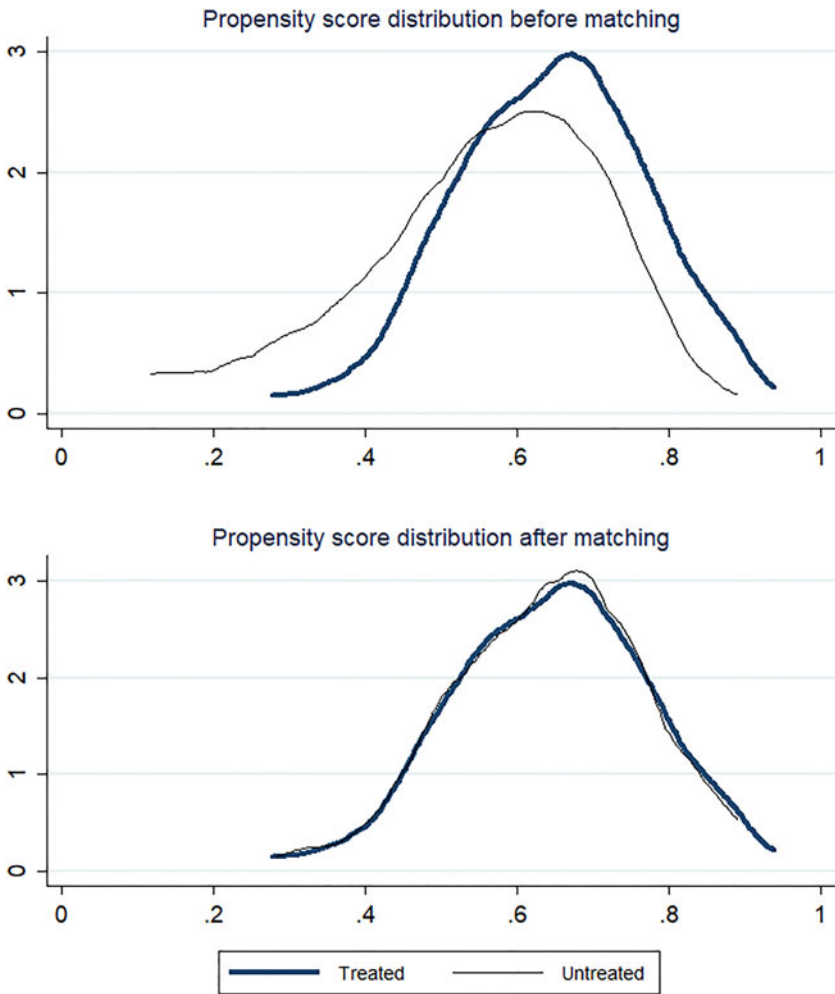


Figure 1. Density Estimates of the Estimates of the Propensity Score $\Pr(T = 1|X)$

Notes: The density estimations are based on pstest command in STATA. The bounds of the support of the propensity score are set to be 0 and 1.

$$(7) \quad \sum_{\{i: T_i=0\}} \omega_i X_i = \frac{1}{N_1} \sum_{\{i: T_i=1\}} X_i$$

and the normalizing constraints

Table 4. Covariate Balance after Propensity Score Matching

Variables	Treatment	Control	Std. diff. %	% reduction	<i>t</i> -value	<i>p</i> -value
Age	44.053	43.966	1.2	95.2	0.10	0.920
Male (binary)	0.776	0.776	0.1	99.5	0.01	0.995
Education: high school (binary)	0.750	0.752	−0.4	96.8	−0.04	0.971
Education: college/university (binary)	0.125	0.134	−2.6	14.9	−0.23	0.819
Education missing (binary)	0.086	0.085	0.2	98.8	0.02	0.984
Household head’s occupation: agriculture (binary)	0.500	0.519	−3.9	43.9	−0.34	0.736
Household head’s occupation missing (binary)	0.013	0.013	0.4	92.4	0.04	0.968
Years in farming	21.694	21.383	3.6	46.2	0.32	0.747
Household size	4.165	4.151	1.1	89.7	0.10	0.921
Profitable farm ^a	3.618	3.577	7.2	79.6	0.67	0.503
Subsidy dependent ^b	2.033	2.032	0.2	99.1	0.01	0.989
Frequency of cooperation ^c	3.757	3.724	2.2	81.1	0.19	0.852
Share of agricult. production sold on a market	87.592	87.821	−1.4	84.3	−0.13	0.898
Share of income from farming	50.263	51.338	−4.7	63.9	−0.42	0.675
Capacity: farmed area (ha)	1.604	1.500	9.5	−11.2	0.85	0.397
Capacity: total livestock (number of heads)	1.060	1.113	−1.9	52.6	−0.17	0.865

Notes: “Std. diff. %” stands for standardized difference $\frac{100 (\bar{x}_T - \bar{x}_C)}{\sqrt{(\text{var}(x_T) + \text{var}(x_C))/2}}$ (Rosenbaum and Rubin 1985). “% reduction” is percentage reduction in the absolute value of standardized difference after matching as compared to before matching. “*t*-value” and “*p*-value” refer to two-sample *t*-tests for equality of means.

^a*Profitable farm*: 1 = “very unprofitable;” 2 = “moderately unprofitable;” 3 = “break-even;” 4 = “moderately profitable;” 5 = “very profitable.”

^b*Subsidy dependent*: 1 = “not dependent;” 2 = “slightly dependent;” 3 = “very dependent.”

^c*Frequency of cooperation*: 1 = “never;” 2 = “rarely;” 3 = “not sure;” 4 = “sometimes;” 5 = “always.”

$$(8) \quad \sum_{\{i: T_i=0\}} \omega_i = 1$$

$$(9) \quad \omega_i \geq 0 \quad \forall i \text{ with } T_i = 0,$$

where ω_i is a weight estimated for each nontreated observation i , and $h(\cdot)$ is a distance metric. Hainmueller (2012) uses the directed Kullback (1959) entropy divergence: $h(\omega_i) = \omega_i \log(\omega_i/q_i)$, where q_i is the initial base weight. The loss function $\sum_{\{i: T_i=0\}} h(\omega_i)$ measures the distance between the distribution of the estimated weights $\omega_1, \dots, \omega_{N_0}$ and the initial base weights q_1, \dots, q_{N_0} , where N_0 is the number of nontreated units. The distribution of the base weights is usually set to be uniform with $q_i = 1/N_0$. The constraint (7) balances the distribution of X_i between the treatment and the reweighted nontreated groups, so that the latter resembles the former in its covariate distribution. The normalizing constraints (8) and (9) force the weights to sum up to 1 and be nonnegative. The treatment effect on the treated can be estimated as the difference in mean outcomes between the treatment and the reweighted control groups:

$$(10) \quad \hat{\Delta}_{\text{balance}} = \frac{1}{N_1} \sum_{\{i: T_i=1\}} \left(Y_i - \frac{\sum_{\{i: T_i=0\}} Y_i \omega_i}{\sum_{\{i: T_i=0\}} \omega_i} \right).$$

Finally, it needs to be pointed out that our analysis relies implicitly on the stable unit treatment value assumption (SUTVA) that precludes any interaction, spillover, and general equilibrium effects related to individual treatment assignment. However, it is possible that some study participants in the treated group spread information about the brochure in their villages, which would result in the contamination of the control group. In the event this happened, we estimate the lower bound of the absolute value of the treatment effect.

Results

This section summarizes our results by presenting the effect estimates for the subsample of farmers up to 55 years of age who do not employ additional workers and have not applied for the RDP in the last three years. The background characteristics are comparably well balanced for this group. A binary indicator for whether farmers have read the brochure or not suggests that only 5.8 percent of those who had received the information brochure did not read it, so that treatment noncompliance is low.

Table 5. Treatment Effects for the Outcomes of Interest

Outcome variables	Mean diff.	OLS	Match	ebalance
<i>Panel A: Intention to apply for and use RDP support</i>				
(1) Farmer intends to apply for RDP in one of the next calls	0.087 (0.093)	0.005 (0.087)	0.041 (0.095)	0.017 (0.114)
(2) Possibility to use RDP in the next 3–5 years	−0.097 (0.107)	−0.204* (0.106)	−0.148 (0.116)	−0.250* (0.142)
(3) Intention to use RDP in the next 3–5 years	−0.071 (0.098)	−0.155 (0.095)	−0.113 (0.098)	−0.166 (0.116)
<i>Panel B: Judgements on information and application procedures</i>				
(4) Farmer has enough information to independently prepare application	0.215** (0.091)	0.194** (0.092)	0.210** (0.099)	0.187* (0.106)
(5) Farmer has enough knowledge and experience to independently prepare application	0.153* (0.084)	0.142* (0.076)	0.150* (0.089)	0.155* (0.091)
(6) RDP application (procedure and documents) is easy	0.203** (0.094)	0.156* (0.093)	0.128 (0.099)	0.115 (0.097)
(7) RDP increases administrative work for household owners	0.195*** (0.065)	0.153*** (0.053)	0.180*** (0.069)	0.177** (0.077)

Notes: Asymptotic standard errors in parentheses are robust to heteroscedasticity for the mean differences, OLS, and entropy balancing. Standard errors are based on 1999 bootstrap replications for the kernel matching estimation. Significance levels: *** 1%, ** 5%, * 10%. ebalance: means are balanced. Sample sizes: for outcome variables 1–6 is 257 obs., for outcome variable 7 is 256 obs. All the outcome variables (except for *Possibility to use RDP...*, and *Intention to use RDP...*) are measured on a five-point scale: 1 = “strongly disagree;” 2 = “disagree;” 3 = “don’t know;” 4 = “agree;” 5 = “strongly agree.” *Possibility to use RDP...* and *Intention to use RDP...* are measured as: 1 = “very low,” 2 = “low,” 3 = “average,” 4 = “strong,” 5 = “very strong.”

Main Results

Table 5 presents the effects for the outcomes of interest. Column 2 reports the mean differences in outcomes across the treatment and control groups. The estimates based on OLS, kernel matching, and entropy balancing are provided in columns 3, 4, and 5.

We find no statistical evidence that the brochure affected the farmers' intended uptake in the near future. For the outcome "Farmer intends to apply for the RDP in one of the next calls," the point estimates are close to zero and nonsignificant. Regarding the "Possibility to use the RDP in the next 3–5 years," the OLS and entropy balancing estimates are negative and statistically significant at the 10-percent level. Finally, the effect on the "Intention to use the RDP in the next 3–5 years" is not statistically significant.

The treatment effects for the outcome variables presented in *Panel B* of **Table 5** might shed some light on why the brochure had mostly insignificant effects on the main outcomes of interest. We notice that the intervention had a positive and statistically significant effect on claiming to have sufficient information, as well as sufficient knowledge and experience to independently prepare the RDP application. Similarly, although with lower statistical significance, we find a positive treatment effect on the assessment of the application procedure as easy. The effect on associating the RDP with increasing administrative work for household owners is positive, relatively strong, and highly statically significant. This could be one reason why the intervention did not boost farmers' intention to use RDP support.

The brochure contained a brief description of bureaucratic procedures related to the application and the selection process. From this, treated farmers could have inferred high administrative costs of being involved in RDP projects. Local experts (namely National Extension Agency advisors) explained that farmers had often believed RDP participation required substantial administrative work, and only those farmers who had no other opportunities to finance their investments would turn to governmental aid. Similarly, a recent study by Dwyer and Powell (2016) reports that potential RDP applicants, especially in new EU member states, are often discouraged by "what they perceive as costly application, negotiation or management processes" (Dwyer and Powell, 2016, 551). Taken together, this evidence suggests that information in the brochure might have reaffirmed pre-existing beliefs among farmers about the high administrative cost of RDP projects, and thus possibly discouraged their intention to participate.

Heterogeneity of Treatment Effects by Farm Profitability

In the next step, we consider the heterogeneity of treatment effects by farm profitability. As mentioned in the "Study design" section, most measures presented in the information brochure require cofinancing. Given that farmers must initially cofinance the project investment from their own

means, and RDP support happens only after the costs are realized, it is likely that cofinancing is more feasible for profitable farmers compared to unprofitable ones. Profitable farmers have the opportunity to cofinance an RDP project, either from their own profits and savings or have an easier access to bank loans than unprofitable farmers. Figure 1A in Appendix A shows that although the majority of farmers in both groups find getting a loan difficult, a greater number of profitable farmers think obtaining a loan is easy compared to unprofitable ones. Thus, we would expect the brochure might have had differential effects by farm profitability.

The heterogeneity analysis is based on the evaluation sample, which contains 106 unprofitable and 151 profitable farms⁵. Table 6 presents the effects by farm profitability. Concerning *Panel A*, for unprofitable farmers, the effects on the reported possibility and intention to use the RDP in the household are negative and statistically significant in several cases, despite the small sample size. For profitable farmers, the impacts are never statistically significant. Turning to *Panel B*, we find that the brochure increased the profitable farmers' judgment about having enough information, as well as knowledge and experience to independently prepare the application. Both effects are highly significant and relatively strong. At the same time, the brochure had no statically significant effect on these outcome variables for unprofitable farmers. Another finding is that among unprofitable farmers, the intervention (statistically significantly) increased the perception that the RDP brings additional administrative work for the household; at the same time the impact is close to zero among profitable farmers.

In summary, unprofitable farmers seem to be less willing to make use of the RDP and associate it to a larger extent with increased administrative work when receiving the brochure. For profitable farmers, the intervention increased claiming to possess enough information, knowledge, and experience to prepare the application but did not significantly affect any other outcomes. The differential effects may be driven by the access to means of cofinancing.

Conclusion

The present study was designed to determine the effects of a randomized information campaign on farmers' knowledge and intention to participate in the RDP in FYR Macedonia. Based on several reports and prior studies, the hypothesis was that a paucity of comprehensible information contributed to low application rates. We examined if by providing in-person information to farmers, thus lowering farmers' cost of information search, their interest in program participation could be piqued.

⁵ Farms that are reported to break even financially are included in the unprofitable group. In the group of unprofitable farmers, 56 received the brochure, and 50 did not; in the group of profitable farmers, 100 were treated, and 51 were not.

Table 6. Heterogeneity of Treatment Effects by Farm Profitability

Outcome variables	Mean difference		OLS		Match		ebalance	
	Profit	Unprofit	Profit	Unprofit	Profit	Unprofit	Profit	Unprofit
<i>Panel A: Intention to apply for and use RDP support</i>								
(1) Farmer intends to apply for RDP in one of the next calls	-0.007 (0.129)	0.045 (0.118)	0.116 (0.132)	-0.128 (0.125)	-0.062 (0.163)	-0.121 (0.128)	-0.105 (0.179)	-0.041 (0.136)
(2) Possibility to use RDP in the next 3–5 years	-0.067 (0.141)	-0.215 (0.163)	-0.034 (0.143)	-0.459*** (0.167)	-0.096 (0.158)	-0.667*** (0.237)	-0.137 (0.208)	-0.382* (0.202)
(3) Intention to use RDP in the next 3–5 years	-0.077 (0.132)	-0.123 (0.149)	-0.041 (0.135)	-0.263* (0.151)	-0.176 (0.153)	-0.309 (0.196)	-0.124 (0.214)	-0.222 (0.159)
<i>Panel B: Judgements on information and application procedures</i>								
(4) Farmer has enough information to independently prepare application	0.387*** (0.117)	0.032 (0.140)	0.400*** (0.121)	0.074 (0.140)	0.406*** (0.144)	-0.162 (0.181)	0.382** (0.158)	0.010 (0.174)
(5) Farmer has enough knowledge and experience to independently prepare application	0.352*** (0.093)	-0.026 (0.140)	0.293*** (0.093)	-0.019 (0.123)	0.313*** (0.115)	-0.167 (0.183)	0.387*** (0.086)	-0.104 (0.167)
(6) RDP application (procedure and documents) is easy	0.196 (0.122)	0.243* (0.146)	0.145 (0.133)	0.153 (0.146)	0.167 (0.114)	0.113 (0.203)	0.329* (0.173)	0.151 (0.194)
(7) RDP increases administrative work for household owners	0.100 (0.065)	0.349*** (0.115)	0.031 (0.058)	0.297*** (0.095)	0.040 (0.102)	0.181 (0.131)	0.101 (0.097)	0.277** (0.129)

Notes: Asymptotic standard errors in parentheses are robust to heteroscedasticity. Standard errors are based on 1999 bootstrap replications for the kernel matching estimation. Significance levels: *** 1%, ** 5%, * 10%. ebalance: means are balanced. All the outcome variables (except for *Possibility to use RDP...*, and *Intention to use RDP ...*) are measured on a five-point scale: 1 = “strongly disagree;” 2 = “disagree;” 3 = “don’t know;” 4 = “agree;” 5 = “strongly agree.” *Possibility to use RDP...*, and *Intention to use RDP ...* are measured as: 1 = “very low,” 2 = “low,” 3 = “average,” 4 = “strong,” 5 = “very strong.”

The results of our investigation indicate that although the information campaign raised farmers' knowledge about the Macedonian RDP, it did not increase their intention to participate in the program. Instead, it enhanced the perception that the RDP involvement required substantial administrative work from household owners. Furthermore, we found some heterogeneity in the effects by farm profitability. Whereas the information campaign appeared to increase knowledge among profitable farmers, it negatively affected the intention to use RDP support and increased perceived administrative burden among unprofitable farmers.

A caveat of the current study is that the intended randomization of the information brochure could not be properly implemented by the interviewers. We tackled this issue by controlling for observed covariates both in linear regression and nonparametric estimation. Notwithstanding potential limitations, the study's results suggest that the government should consider ways to improve RDP implementation and make it more accessible for Macedonian farmers, possibly by easing the administrative hurdle associated with program participation. Future research could investigate costs and benefits of modifying the financing mode of RDP measures to make them more affordable for break-even and unprofitable farmers.

Supplementary material

The supplementary material for this article can be found at <https://doi.org/10.1017/age.2018.4>

References

- Achuonjei, P., F. dos Santos, and Y. Reyes. 2003. "Farmers' Perceptions of the Effectiveness of the Agricultural Rehabilitation Project (ARP) Information Campaign, East Timor." Proceedings of the 19th Annual Conference of Association for International Agricultural and Extension Education (Raleigh, North Carolina, USA). Available at <https://www.aiaee.org/attachments/article/1236/Achuonjei11.pdf> (accessed August 15, 2017).
- Altmann, S., A. Falk, S. Jaeger, and F. Zimmermann. 2015. "Learning about Job Search: A Field Experiment with Job Seekers in Germany." IZA discussion paper No. 9040.
- Altmann, S., and C. Traxler. 2014. "Nudges at the Dentist." *European Economic Review* 72(C): 19–38.
- APM Database. 2015. "Agricultural Policy Measures Database Compiled for The Former Yugoslav Republic of Macedonia under the FAO/SWG project "Streamlining of Agriculture and Rural Development Policies of SEE Countries for EU Accession." Unpublished data.
- Benders, R., R. Kok, H. Moll, G. Wiersma, and K. Noorman. 2006. "New Approaches for Household Energy Conservation—In Search of Personal Household Energy Budgets and Energy Reduction Options." *Energy Policy* 34(18): 3612–3622.
- Chetty, R., and E. Saez. 2013. "Teaching the Tax Code: Earnings Responses to an Experiment with EITC Recipients." *American Economic Journal: Applied Economics* 5(1): 1–31.
- Dimitrievski, D., A. Kotevska, I. Janeska Stamenkovska, E. Tuna, and M. Nacka. 2014. "Agriculture and Agricultural Policy in the Former Yugoslav Republic of Macedonia." In

- T. Volk, E. Erjavec, and K. Mortensen, eds., *Agricultural Policy and European Integration in Southeastern Europe*. Budapest: Food and Agriculture Organization of the United Nations, 121–134.
- Duflo, E., and E. Saez. 2003. "The Role of Information and Social Interactions in Retirement Plan Decisions: Evidence from a Randomized Experiment." *The Quarterly Journal of Economics* 118(3): 815–842.
- Dwyer, J., A. Buckwell, K. Hart, H. Menadue, F. Mantino, E. Erjavec, and B. Ilbery. 2012. "Study: How to Improve the Sustainable Competitiveness and Innovation of the Agriculture Sector, IP/ B/AGRI/IC/2011-100." Brussels: European Parliament. Available at www.europarl.europa.eu/studies (accessed August 15, 2017).
- Dwyer, J., and J. Powell. 2016. "Rural Development Programmes and Transaction Effects: Reflections on Maltese and English Experience." *Journal of Agricultural Economics* 67(3): 545–565.
- European Commission. 2005. *Council Regulation (EC) No. 1698/2005 of 20 August 2005 on Support for Rural Development by the European Agricultural Fund for Rural Development (EAFRD)*. Brussels: Commission of the European Communities.
- . 2013. "IPA Rural Development Programme (IPARD) for the Former Yugoslav Republic of Macedonia. Fifth Modification." Available at http://ec.europa.eu/agriculture/enlargement/countries/fyrom/ipard_en.pdf (accessed August 15, 2017).
- Feld, S., H. Frenzen, M. Krafft, K. Peters, and P.C. Verhoef. 2013. "The Effects of Mailing Design Characteristics on Direct Mail Campaign Performance." *International Journal of Research in Marketing* 30(2): 143–159.
- Ferraro, P., and J. Miranda. 2013. "Heterogeneous Treatment Effects and Mechanisms in Information-Based Environmental Policies: Evidence from a Large-Scale Field Experiment." *Resource and Energy Economics* 35(3): 356–379.
- Galadima, M. 2014. "Constraints on Farmers' Access to Agricultural Information Delivery: A Survey of Rural Farmers in Yobe State, Nigeria." *IOSR Journal of Agriculture and Veterinary Science* 7(9): 18–22.
- Hainmueller, J. 2012. "Entropy Balancing for Causal Effects: A Multivariate Reweighting Method to Produce Balanced Samples in Observational Studies." *Political Analysis* 20(1): 25–46.
- Hainmueller, J., and Y. Xu. 2013. "ebalance: A STATA Package for Entropy Balancing." *Journal of Statistical Software* 54(7): 1–18.
- Hassan, M.S., H.A.M. Shaffril, M.S. Shahkat Ali, and N.S. Ramli. 2010. "Agriculture Agency, Mass Media and Farmers: A Combination for Creating Knowledgeable Agriculture Community." *African Journal of Agricultural Research* 5(24): 3500–3513.
- Huber, M., M. Lechner, and C. Wunsch. 2013. "The Performance of Estimators based on the Propensity Score." *Journal of Econometrics* 175(1): 1–21.
- Imbens, G. 2004. "Nonparametric Estimation of Average Treatment Effects under Exogeneity: A Review." *Review of Economics and Statistics* 86(1): 4–29.
- IPARD II. 2015. EU Instrument for Pre-Accession Rural Development Programme 2014–2020. Final Version as Adopted by the European Commission on 13.02.2015. Skopje, Republic of Macedonia. Available at http://ipardpa.gov.mk/Root/mak/_docs/Zakonodavstvo/IPARD%20II%20Programme_ENG.pdf (accessed November 20, 2017).
- Kotevska, A., N. Bogdanov, A. Nikolić, D. Dimitrievski, A. Martinovska-Stojcheska, E. Tuna, T. Milić, A. Simonovska, R. Papić, L. Petrović, M. Uzunović, E. Becirović, B. Angjalković, D. Gjoshevski, and N. Georgiev. 2015. *The Impact of Socio-Economic Structure of Rural Population on Success of Rural Development Policy – Macedonia, Serbia and Bosnia and Herzegovina*. Skopje: Association of Agricultural Economists of Republic of Macedonia.
- Kullback, S. 1959. *Information Theory and Statistics*. New York: Wiley.
- Liebman, J., and E. Luttmer. 2015. "Would People Behave Differently if They Better Understood Social Security? Evidence from a Field Experiment." *American Economic Journal: Economic Policy* 7(1): 275–299.

- Lwoga, E., C. Stilwell, and P. Ngulube. 2011. "Access and Use of Agricultural Information and Knowledge in Tanzania." *Library Review* 60(5): 383–395.
- National Bank of the Republic of Macedonia. 2017. List of Exchange Rates. Available at http://www.nbrm.mk/kursna_lista-en.nspix (accessed August 15, 2017).
- Rosenbaum, P.R., and D.B. Rubin. 1985. "Constructing A Control Group using Multivariate Matched Sampling Methods That Incorporate the Propensity Score." *The American Statistician* 39(1): 33–38.
- Saez, E. 2009. "Details Matter: The Impact of Presentation and Information on the Take-Up of Financial Incentives for Retirement Saving." *American Economic Journal: Economic Policy* 1(1): 204–228.
- Smith, J., and P. Todd. 2005. "Does Matching Overcome Lalonde's Critique of Nonexperimental Estimators?" *Journal of Econometrics* 125(1–2): 305–353.
- State Statistical Office of the Republic of Macedonia. 2015. Indicators. Available at http://www.stat.gov.mk/Default_en.aspx (accessed August 15, 2017).
- Zakon za Zemjodelstvo i Ruralen Razvoj [Law of Agriculture and Rural Development]. 2010. Sluzben Vesnik na Republika Makedonija 49: 1–84. Available at <http://www.slvesnik.com.mk/Issues/9E6050C54BDFFE46AD6BC1607D67D671.pdf> (accessed August 15, 2017).