

# Patterns of polysomnography parameters in 27 neuropsychiatric diseases: An umbrella review – CORRIGENDUM

## Corrigendum

**Cite this article:** Zhang Y, Ren R, Yang L, Zhang H, Shi Y, Vitiello MV, Sanford LD, Tang X (2024). Patterns of polysomnography parameters in 27 neuropsychiatric diseases: An umbrella review – CORRIGENDUM. *Psychological Medicine* 54, 435. <https://doi.org/10.1017/S0033291723003562>

Received: 5 November 2023  
 Accepted: 14 November 2023  
 First published online: 4 January 2024

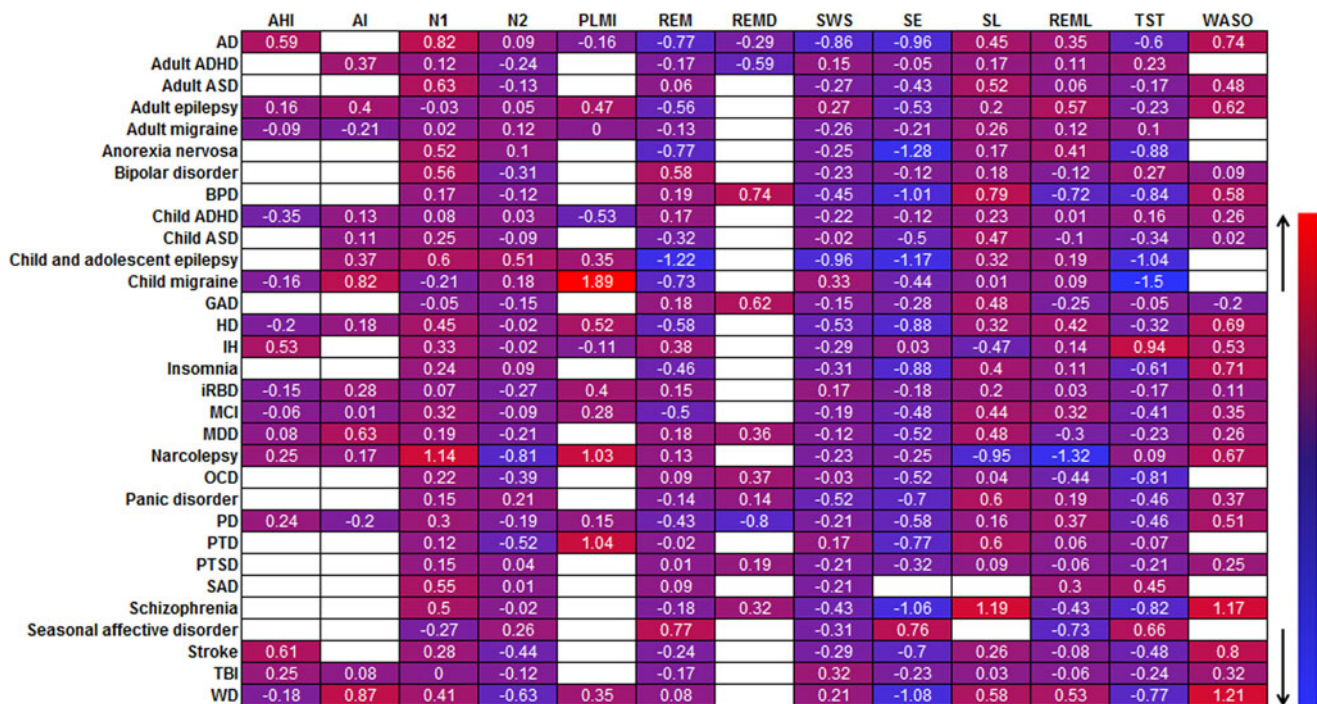
**Corresponding authors:**  
 Xiangdong Tang;  
 Email: [2372564613@qq.com](mailto:2372564613@qq.com)  
 Rong Ren;  
 Email: [498880651@qq.com](mailto:498880651@qq.com)

Ye Zhang<sup>1</sup>, Rong Ren<sup>1</sup>, Linghui Yang<sup>1</sup>, Haipeng Zhang<sup>1</sup>, Yuan Shi<sup>1</sup>, Michael V. Vitiello<sup>2</sup>, Larry D. Sanford<sup>3</sup> and Xiangdong Tang<sup>1</sup>

<sup>1</sup>Sleep Medicine Center, Mental Health Center, West China Hospital, Sichuan University, Chengdu, China; <sup>2</sup>Department of Psychiatry and Behavioral Sciences, University of Washington, Seattle, WA 98195-6560, USA and <sup>3</sup>Sleep Research Laboratory, Center for Integrative Neuroscience and Inflammatory Diseases, Pathology and Anatomy, Eastern Virginia Medical School, Norfolk, VA, USA

Doi: [10.1017/S0033291722001581](https://doi.org/10.1017/S0033291722001581), published online by Cambridge University Press, Nov 15 2022.

When this article was published, there was an error in Figure 2. Some data of standardized mean differences (SMD) of slow wave sleep (SWS) were placed in the column of rapid eye movement sleep latency (REML). Some SMDs of REML were placed in the column of SWS. These do not result in any change in Results, Discussion, and Conclusions. The authors apologize for the error. Figure 2 has been updated as below:



**Figure 2.** Change patterns (standardized mean differences) of sleep parameters in 27 neuropsychiatric diseases. **Abbreviations of disease names:** AD, Alzheimer’s disease; ADHD, attention deficit hyperactivity disorder; ASD, autism spectrum disorder; BPD, borderline personality disorder; GAD, generalized anxiety disorder; HD, Huntington’s disease; IH, idiopathic hypersomnia; IRBD, idiopathic rapid eye movement sleep behavior disorder; MCI, mild cognitive impairment; MDD, major depressive disorder; OCD, obsessive compulsive disorder; PD, Parkinson’s disease; PTD, persistent tic disorder; PTSD, posttraumatic stress disorder; SAD, social anxiety disorder; TBI, traumatic brain injury; WD, Wilson’s disease. **Abbreviations for sleep parameters:** AHI, apnea hypopnea index; AI, arousal index; PLMI, Periodic limb movement index; REM, rapid eye movement sleep; REMD, rapid eye movement sleep density; REML, rapid eye movement sleep latency; SE, sleep efficiency; SL, sleep latency; SWS, slow wave sleep; TST, total sleep time; WASO, wake time after sleep onset.

© Sleep Medicine Center West China Hospital, Sichuan University and the Author(s), 2024. Published by Cambridge University Press

## Reference

Zhang, Y., Ren, R., Yang, L., Zhang, H., Shi, Y., Vitiello, M.V., Sanford, L.D., Tang, X. (2023). Patterns of polysomnography parameters in 27 neuropsychiatric diseases: an umbrella review. *Psychological Medicine*, 53(10): 4675-4695. doi: [10.1017/S0033291722001581](https://doi.org/10.1017/S0033291722001581).

