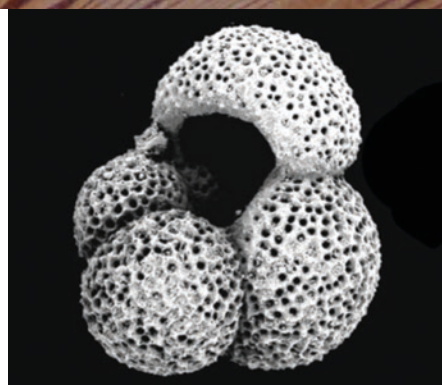
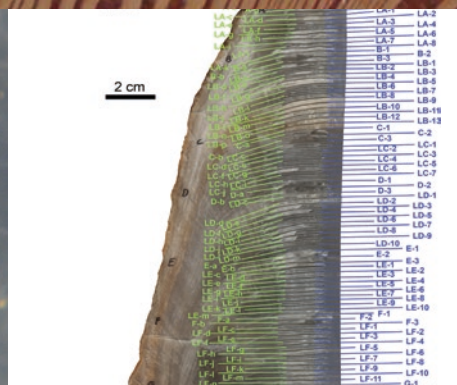
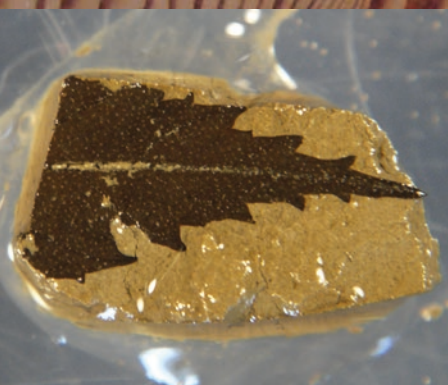


# Radiocarbon

An International Journal of Cosmogenic Isotope Research

VOLUME 62 • NUMBER 4 • 2020

## INTCAL20: CALIBRATION ISSUE



Guest Editor: Paula J. Reimer

CAMBRIDGE  
UNIVERSITY PRESS

## Radiocarbon

*An International Journal of Cosmogenic Isotope Research*

### EDITOR

A. J. T. Jull · University of Arizona

### MANAGING EDITOR

Kimberley Tanner Elliott · University of Arizona

### ASSOCIATE EDITORS

Edouard Bard · Collège de France

Nancy Beavan · Cardiff University

Warren Beck · University of Arizona

Elisabetta Boaretto · Weizmann Institute

Christopher Bronk Ramsey · Oxford University

George S. Burr · University of Arizona

Owen K. Davis · University of Arizona

Ellen R. M. Druffel · University of California-Irvine

Pieter Grootes · Christian-Albrechts University

Irka Hajdas · ETH Zurich

Derek Hamilton · University of Glasgow

Christine Hatté · Laboratoire des Sciences du Climat et

l'Environnement

Gregory Hodgins · University of Arizona

Quan Hua · Australian Nuclear Science and Technology

Organisation

Yaroslav Kuzmin · Russian Academy of Sciences

Steven W. Leavitt · University of Arizona

Ann P. McNichol · Woods Hole Oceanographic Institution

Mihály Molnár · Hertelendi Laboratory of Environmental  
Studies, Hungary

Toshio Nakamura · Nagoya University

Jesper Olsen · Aarhus AMS Center

Charlotte Pearson · University of Arizona

Pavel Povinec · Comenius University

Paula J. Reimer · Queen's University Belfast

E. Marian Scott · University of Glasgow

John R. Southon · University of California-Irvine

Jocelyn Turnbull · GNS Science

Johannes van der Plicht · Groningen University

Antoine Zazzo · Muséum national d'Histoire naturelle

Weijian Zhou · Institute of Earth Environment, Chinese

Academy of Science

*Radiocarbon* (ISSN 0033-8222) is published quarterly by Cambridge University Press, One Liberty Plaza 20th Floor New York, NY 10006. © 2020 by the Arizona Board of Regents on behalf of the University of Arizona. All rights reserved.

### Editorial Office

Communications should be addressed to the Managing Editor, *Radiocarbon*, Department of Geosciences, The University of Arizona, 4717 East Fort Lowell Road, Tucson, AZ 85712-1201 USA. Tel.: +1 (520) 621-0641; Fax: +1 (520) 621-0584; Email: kimelliott@email.arizona.edu. Contributors should consult the Instructions for Contributors, which is available on the journal's Web site: [cambridge.org/rdc](http://cambridge.org/rdc).

### Subscriptions

Annual subscription rates for Volume 62, 2020: Institutional rate is (print and electronic) \$579 in the USA, Canada, and Mexico, £373 + VAT elsewhere. Institutional rate (electronic only) \$422 in the USA, Canada, and Mexico, £271 + VAT elsewhere. Individual rate is (print and electronic) \$191 in the USA, Canada, and Mexico, £123 + VAT elsewhere. Individual rate (electronic only) \$146 in the USA, Canada, and Mexico, £50 + VAT elsewhere. Please direct subscription inquiries and requests for back issues to Customer Services at Cambridge University Press, email: [subscriptions\\_newyork@cambridge.org](mailto:subscriptions_newyork@cambridge.org) (USA, Canada, and Mexico) or [journals@cambridge.org](mailto:journals@cambridge.org) (outside of USA, Canada, and Mexico).

### Advertising

To advertise in the journal email [advertising@cambridge.org](mailto:advertising@cambridge.org) or telephone +1 (212) 337 5062 in the USA, Canada, or Mexico; email [ad\\_sales@cambridge.org](mailto:ad_sales@cambridge.org) or telephone +44 (0)1223 325898 in the rest of the world.

### Abstracting and indexing

*Radiocarbon* is indexed and/or abstracted by the following sources: *Anthropological Index*; *Anthropological Literature*; *Art and Archaeology Technical Abstracts*; *Bibliography and Index of Geology* (GeoRef); *British Archaeological Bibliography*; *Chemical Abstracts*; *Chemistry Citation Index*; *Current Advances in Ecological and Environmental Sciences*; *Current Contents* (ISI); FRANCIS (Institut de l'Information Scientifique et Technique – CNRS); *Geographical Abstracts*; *Geological Abstracts*; *Oceanographic Literature Review*; *Science Citation Index*; *Social Sciences Citation Index*.

### List of laboratories

Our comprehensive list of laboratories is published annually, and is also available at [www.radiocarbon.org](http://www.radiocarbon.org). We ask all laboratory directors to provide their laboratory code designation, as well as current telephone and fax numbers, and email addresses. Changes in names or addresses, additions or deletions should be reported to the managing editor. Conventional and AMS laboratories are arranged in alphabetical order by country, and we include laboratories listed by code designation.

### Permissions

No part of this publication may be reproduced, in any form or by any means, electronic, photocopying or otherwise, without permission in writing from Cambridge University Press. Policies, request forms and contacts are available at: <http://journals.cambridge.org/action/rightsAndPermissions>. Permission to copy (for users in the USA) is available from Copyright Clearance Center: <http://www.copyright.com>, email: [info@copyright.com](mailto:info@copyright.com).

**Postmaster:** Send address changes to *Radiocarbon*, Cambridge University Press, One Liberty Plaza, New York, NY 10006, USA.

# Radiocarbon

Vol 62, Nr 4, 2020

## CONTENTS

### INTRODUCTION

Letter from the Guest Editor

*Paula J Reimer*..... v

### CALIBRATION CURVES AND CONSTRUCTION

The IntCal20 Northern Hemisphere Radiocarbon Age Calibration Curve (0–55 cal kBP)

*Paula J Reimer, William E N Austin, Edouard Bard, Alex Bayliss, Paul G Blackwell, Christopher Bronk Ramsey, Martin Butzin, Hai Cheng, R Lawrence Edwards, Michael Friedrich, Pieter M Grootes, Thomas P Guilderson, Irka Hajdas, Timothy J Heaton, Alan G Hogg, Konrad A Hughen, Bernd Kromer, Sturt W Manning, Raimund Muscheler, Jonathan G Palmer, Charlotte Pearson, Johannes van der Plicht, Ron W Reimer, David A Richards, E Marian Scott, John R Southon, Christian S M Turney, Lukas Wacker, Florian Adolphi, Ulf Büntgen, Manuela Capano, Simon M Fahrni, Alexandra Fogtmann-Schulz, Ronny Friedrich, Peter Köhler, Sabrina Kudsk, Fusa Miyake, Jesper Olsen, Frederick Reinig, Minoru Sakamoto, Adam Sookdeo, Sahra Talamo*..... 725

SHCal20 Southern Hemisphere Calibration, 0–55,000 Years cal BP

*Alan G Hogg, Timothy J Heaton, Quan Hua, Jonathan G Palmer, Chris SM Turney, John Southon, Alex Bayliss, Paul G Blackwell, Gretel Boswijk, Christopher Bronk Ramsey, Charlotte Pearson, Fiona Petchey, Paula Reimer, Ron Reimer, Lukas Wacker*..... 759

Marine20—The Marine Radiocarbon Age Calibration Curve (0–55,000 cal BP)

*Timothy J Heaton, Peter Köhler, Martin Butzin, Edouard Bard, Ron W Reimer, William E N Austin, Christopher Bronk Ramsey, Pieter M Grootes, Konrad A Hughen, Bernd Kromer, Paula J Reimer, Jess Adkins, Andrea Burke, Mea S Cook, Jesper Olsen, Luke C Skinner*..... 779

The IntCal20 Approach to Radiocarbon Calibration Curve Construction: A New Methodology Using Bayesian Splines and Errors-in-Variabes

*Timothy J Heaton, Maarten Blaauw, Paul G Blackwell, Christopher Bronk Ramsey, Paula J Reimer, E Marian Scott*..... 821

A Short Note on Marine Reservoir Age Simulations Used in IntCal20

*Martin Butzin, Timothy J Heaton, Peter Köhler, Gerrit Lohmann*..... 865

## TREE-RING INTERCOMPARISONS AND MEASUREMENTS

Findings from an in-Depth Annual Tree-Ring Radiocarbon Intercomparison <i>L Wacker, E M Scott, A Bayliss, D Brown, E Bard, S Bollhalder, M Friedrich, M Capano, A Cherkinsky, D Chivall, B J Culleton, M W Dee, R Friedrich, G W L Hodgins, A Hogg, D J Kennett, T D J Knowles, M Kuitems, T E Lange, F Miyake, M-J Nadeau, T Nakamura, J P Naysmith, J Olsen, T Omori, F Petchey, B Philippsen, C Bronk Ramsey, G V Ravi Prasad, M Seiler, J Southon, R Staff, T Tuna</i> .....	873
Illuminating IntCal during the Younger Dryas <i>Frederick Reinig, Adam Sookdeo, Jan Esper, Michael Friedrich, Giulia Guidobaldi, Gerhard Helle, Bernd Kromer, Daniel Nievergelt, Maren Pauly, Willy Tegel, Kerstin Treydte, Lukas Wacker, Ulf Büntgen</i> .....	883
Quality Dating: A Well-Defined Protocol Implemented at ETH for High-Precision <sup>14</sup> C-Dates Tested on Late Glacial Wood <i>Adam Sookdeo, Bernd Kromer, Ulf Büntgen, Michael Friedrich, Ronny Friedrich, Gerhard Helle, Maren Pauly, Daniel Nievergelt, Frederick Reinig, Kerstin Treydte, Hans-Arno Synal, Lukas Wacker</i> .....	891
Onset of the Younger Dryas Recorded with <sup>14</sup> C at Annual Resolution in French Subfossil Trees <i>Manuela Capano, Cécile Miramont, Lisa Shindo, Frédéric Guibal, Christian Marschal, Bernd Kromer, Thibaut Tuna, Edouard Bard</i> .....	901
Single-Year German Oak and Californian Bristlecone Pine <sup>14</sup> C Data at the Beginning of the Hallstatt Plateau from 856 BC to 626 BC <i>Simon M Fahrni, John Southon, Benjamin T Fuller, Junghun Park, Michael Friedrich, Raimund Muscheler, Lukas Wacker, R E Taylor</i> .....	919
Annual Variation in Atmospheric <sup>14</sup> C between 1700 BC and 1480 BC <i>Charlotte Pearson, Lukas Wacker, Alex Bayliss, David Brown, Matthew Salzer, Peter Brewer, Silvia Bollhalder, Gretel Boswijk, Gregory Hodgins</i> .....	939
A New Annual <sup>14</sup> C Dataset for Calibrating the Thera Eruption <i>Ronny Friedrich, Bernd Kromer, Lukas Wacker, Jesper Olsen, Sabine Remmele, Susanne Lindauer, Alexander Land, Charlotte Pearson</i> .....	953
Wood from the Netherlands around the Time of the Santorini Eruption Dated by Dendrochronology and Radiocarbon <i>Margot Kuitems, Johannes van der Plicht, Esther Jansma</i> .....	963
New Single-Year Radiocarbon Measurements Based on Danish Oak Covering the Periods AD 692–790 and 966–1057 <i>Sabrina G K Kudsk, Bente Philippsen, Claudia Baittinger, Alexandra Fogtmann-Schulz, Mads F Knudsen, Christoffer Karoff, Jesper Olsen</i> .....	969
<b>UPDATED INTCAL13 RECORDS</b>	
Reanalysis of the Atmospheric Radiocarbon Calibration Record from Lake Suigetsu, Japan <i>Christopher Bronk Ramsey, Timothy J Heaton, Gordon Schololaut, Richard A Staff, Charlotte L Bryant, Achim Brauer, Henry F Lamb, Michael H Marshall, Takeshi Nakagawa</i> .....	989
Updated Cariaco Basin <sup>14</sup> C Calibration Dataset from 0–60 cal kyr BP <i>Konrad A Hughen, Timothy J Heaton</i> .....	1001

## ANALYSIS, COMPARISONS, AND IMPLICATIONS

IntCal20 Tree Rings: An Archaeological SWOT Analysis <i>Alex Bayliss, Peter Marshall, Michael W Dee, Michael Friedrich, Timothy J Heaton, Lukas Wacker</i> .....	1045
Testing and Improving the IntCal20 Calibration Curve with Independent Records <i>Raimund Muscheler, Florian Adolphi, Timothy J Heaton, Christopher Bronk Ramsey, Anders Svensson, Johannes van der Plicht, Paula J Reimer</i> .....	1079
Recent Developments in Calibration for Archaeological and Environmental Samples <i>J van der Plicht, C Bronk Ramsey, T J Heaton, E M Scott, S Talamo</i> .....	1095

## ERRATUM

Onset of the Younger Dryas Recorded with <sup>14</sup> C at Annual Resolution in French Subfossil Trees – Erratum <i>Manuela Capano, Cécile Miramont, Lisa Shindo, Frédéric Guibal, Christian Marschal, Bernd Kromer, Thibaut Tuna, Edouard Bard</i> .....	1119
--	------