

Jonathan Skinner\*, Kalipso Chalkidou and Dean T. Jamison

## Valuing Protection against Health-Related Financial Risks

**Abstract:** There is strong interest in both developing and developed countries toward expanding health insurance coverage. How should the benefits, and costs, of expanded coverage be measured? While the value of reducing the financial risks that result from insurance coverage have long been recognized, there has been less attention in how best to measure such benefits. In this paper, we first provide a framework for assessing the financial value from health insurance. We focus on three distinct potential benefits: Pooling the risk of unexpected medical expenditures between healthy and sick households, redistributing resources from high- to low-income recipients and smoothing consumption over time. We then use this theoretical framework and an illustrative example to provide practical guidelines for benefit-cost analysis in capturing the full benefits (and costs) of expanding health insurance coverage. We conclude by considering other potential financial effects of broad insurance coverage, such as the ability to consolidate purchases and thus lower input prices.

**Keywords:** health; risk and uncertainty.

**JEL classifications:** D61; I13.

### 1 Introduction

In countries of all income levels there is a wide belief that health insurance has tremendous value, a belief that underpins inclusion of universal health coverage (UHC) in the ‘sustainable development goals’ for all countries by 2030.<sup>1</sup> In valuing

---

\***Corresponding author: Jonathan Skinner**, Dartmouth College, Department of Economics, Hanover, NH 03755, USA, e-mail: [jon.skinner@dartmouth.edu](mailto:jon.skinner@dartmouth.edu)

**Kalipso Chalkidou:** Center for Global Development, Washington DC 20036, USA, e-mail: [kchalkidou@cgdev.org](mailto:kchalkidou@cgdev.org)

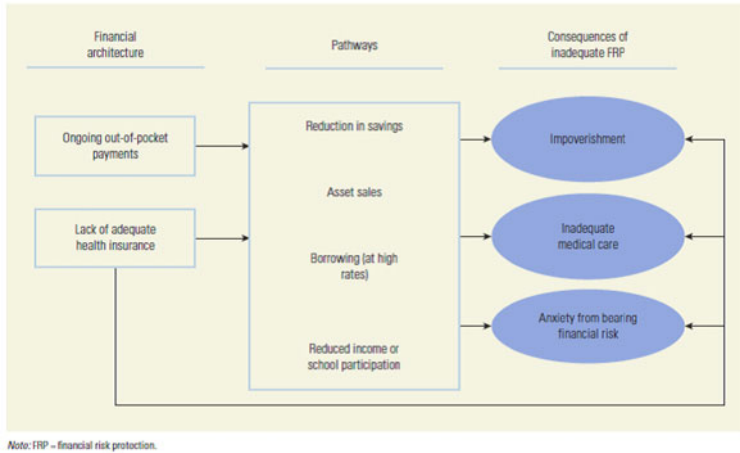
**Dean T. Jamison:** University of California, San Francisco, CA 94143, USA, e-mail: [djamison@uw.edu](mailto:djamison@uw.edu)

<sup>1</sup> See the World Bank (<http://www.worldbank.org/en/topic/universalhealthcoverage>); *The Economist*, April 28–May 4, 2018, p. 11 (and accompanying special report); WHO (2010), and Ghebreyesus (2017).

the benefits of health insurance, most analyses, not surprisingly, focus primarily on its beneficial impact on health (Jamison et al., 2013; Robinson et al., 2019a,b). Yet researchers and policy analysts have understood for many years that insurance also protects against major shocks to the financial well-being of the household by mitigating lost earning capacity, and helping to cover out-of-pocket health care expenditures (Arrow, 1963; Zeckhauser, 1970; Baily, 1978; Feldman & Dowd, 1991; Gertler & Gruber, 2002; Wagstaff & van Doorslaer, 2003; Chetty, 2006; van Doorslaer et al., 2006, 2007; Wagstaff, 2010; Baicker & Levy, 2012; Smith, 2013; Flores & O'Donnell, 2016). Indeed, when President Lyndon Johnson in the U.S. enacted the Medicare program to cover the elderly, in 1965, he declared “No longer will illness crush and destroy the savings that [older Americans] have so carefully put away over a lifetime so that they might enjoy dignity in their later years” (Baicker & Levy, 2012).

Despite the general recognition that health insurance is valuable for more than “buying health” (as in Nyman (1999); see also Jan et al. (2018)), placing a monetary value on the financial benefits of health insurance in benefit-cost analysis is less commonly done. One exception is Verguet et al. (2015), who used an “extended cost-effectiveness analysis” (ECEA) framework to estimate the financial benefits of a universal public insurance program for tuberculosis treatment, and found substantial benefits, particularly to the lowest quintile of the income distribution. Earlier examples include Gertler and Gruber (2002) who examined financial risk in Indonesia, and McClellan and Skinner (2006), who estimated that the financial benefits of the U.S. Medicare program were as much as 88 cents per dollar of insurance coverage (also see Finkelstein & McKnight, 2008). The benefits of expanding insurance coverage, and the pathways through which those benefits can be realized, are multidimensional as is shown in Figure 1.

In this paper, we follow the earlier literature in developing a simple two-period model that provides a structure to understand the non-health benefits, and costs, of expanding health insurance. We document how health insurance can have other far-ranging effects on individuals, and society, depending on the design of the proposed insurance policy, and characteristics of the existing health care system. Our goal is to develop simple principles to augment benefit-cost analysis (BCA) and cost-effectiveness analysis (CEA) to capture how health insurance expansion affects financial security for low- and middle-income countries (LMICs) (Jamison, 2009). The model allows for different types of insurance coverage, allowing us to address at a theoretical level the value of “broad” coverage of primary care including vaccines and other preventive measures, versus “deep” coverage of costly hospitalizations arising from (e.g.) chronic diseases or catastrophic health events. This analysis constitutes an example of a broader trend to augment cost-effectiveness analysis not only with considerations of financial protection but also of other



**Figure 1** Financial risk protection aspects of health insurance. *Source:* Jamison et al. (2018).

dimensions of outcome imperfectly captured by standard approaches to CEA and BCA (Phelps et al., 2018).

What are the financial effects of health insurance? First, as noted above, it pools the risk of unexpected medical expenditures between healthy and sick households. Second, it can (but may not always) facilitate the redistribution of income from high- to low-income recipients, and by doing so can make previously unattainable health care affordable (Nyman, 1999). Third, it can also facilitate the smoothing of consumption over time; health shocks often come toward the end of life, and so paying early-on through payroll contributions, for example, help to lessen the shock of having to scale back on consumption later in life if health insurance premiums rise with age.

How should these characteristics of health insurance be measured and implemented in benefit-cost analysis? We provide a practical evaluation of health insurance expansions by using an illustrative example from a hypothetical LMIC. Using plausible parameters, the calculations suggest quite large benefits of risk reduction for lower-income groups. Consumption-smoothing benefits are smaller in magnitude but can potentially provide a sizeable proportional benefit to lower-income enrollees but a larger (dollar) benefit to higher-income taxpayers; still, we estimate that adjusting for these combined financial effects tend to make health insurance expansions more progressive. This paper thus contributes to a project to develop a “reference case” for benefit-cost analysis of investments in low- and middle-income countries that have significant health consequences; see Robinson et al. (2019a) for an overview of the overall project.

## 2 The model

We begin with a simple two-period model based on McClellan and Skinner (2006), in which individuals consume non-medical goods in both periods and are subject to the risk of poor health in the second, so that they divide resources in the second period between out-of-pocket medical spending and non-medical consumption. Given the intrinsic uncertainty about future health, we characterize expected utility for individual or household in income group  $j$ ,  $W_j$ , as being the expected value of lifetime utility:<sup>2</sup>

$$W_j = U(C_{1j}) + \frac{\pi}{1 + \delta} E\{V(A_{2j}, Y_{2j})\}, \quad (1a)$$

where the second-period utility (or value) function, which depends on assets at the outset of period 2,  $A_{2j}$  and income received in period 2,  $Y_{2j}$ , is written:

$$E\{V(A_{2j}, Y_{2j})\} = \pi_g(h_{2j})U(C_{2gj}) + \pi_b(h_{2j})U(C_{2bj}). \quad (1b)$$

Utility in the first (healthy) period depends on non-medical consumption  $C_{1j}$ , while the value function in the second period – essentially the expected value of utility in period 2 (from the perspective of period 2) depends on the likelihood of surviving to period 2 ( $\pi$ ) and the time preference rate  $\delta$ . Once arriving at period 2, there is a chance of bad health,  $\pi_b$ , and good health,  $\pi_g$ ; because the individual has survived to period 2, the two probabilities sum to one.<sup>3</sup>

The input  $h_{2j}$  is the component of health care that corresponds to clinics, vaccinations, and other relatively low-cost treatments that are assumed to be the same whether the individual is in good or poor health; it is less likely to impose catastrophic costs on recipients. However, this input is assumed to have an impact on the likelihood of being in the healthy or sick state of the world, so we assume that  $0 > d\pi_b/dh_{2j} = -d\pi_g/dh_{2j}$ .<sup>4</sup>

The budget constraint from the perspective of period 2 is:

$$C_{g2j} = [A_{2j} + Y_{g2j} - P_2(Y_{g2j}) - (1 - \varphi)h_{2j}] \quad (2a)$$

$$C_{b2j} = [A_{2j} + Y_{b2j} - P_2(Y_{b2j})] - [(1 - \Phi)H_j + (1 - \varphi)h_{2j}] \quad (2b)$$

$$A_{2j} = [Y_{1j} - C_{1j} - P_1(Y_{1j})](1 + r). \quad (2c)$$

<sup>2</sup> We adopt the conventional expected utility framework, although O'Donoghue and Somerville (2018) have suggested that loss aversion is sufficient to generate demand for health insurance.

<sup>3</sup> The probability of bad health from the perspective of period 1 is therefore  $\pi\pi_b$  and similarly for good health. Note that individuals die after the end of period 2, and for simplicity there is no bequest motive.

<sup>4</sup> A more complicated model would include preventive or primary care spending in period 1,  $h_1$ , that affects the probability of surviving to period 2,  $\pi$ , thus characterizing such expenditures as an investment in population health.

The government's budget constraint in period 2, which consists of income-based tax revenue devoted to health care,  $P(Y)$ , is given by:

$$\left[ G_2 + \sum_j n_j [\pi_g P(Y_{2gj}) + \pi_b P(Y_{2bj})] \right] - \sum_j n_j [\pi_b H_2 \Phi + h_{2j} \varphi] = 0, \quad (2d)$$

where the government collects user fees from the current (older) generation through the tax and premium mechanism  $P(Y)$ , and  $n_j$  is the fraction of income group  $j$  in the overall economy. Note that there is an additional source of revenue  $G_2$ , which can (in a life-cycle framework) come from the current older generation contributing to a social insurance fund during their earlier working years in period 1 (with an annuity return of those who died between periods 1 and 2),  $G_2 = \sum_j [P_1(Y_{1j})(1 + r + \pi)n_j]$ . Alternatively, one could posit that the budget is for the current year, in which case  $G_2$  would come from taxes paid concurrently by the younger generation.

To capture the idea that benefit expansion can subsidize different types of health care expenditures, we consider two insurance coverage rates; the first,  $\Phi$ , is for expenditures on  $H_2$ , which we characterize as "tertiary" or more intensive care (often associated with hospitalization); for simplicity we assume these expenditures are incurred only in the bad state of health, and do not provide direct utility benefit.<sup>5</sup> The second insurance coverage rate for  $h_2$ ,  $\varphi$ , may differ, depending on whether the insurance system is focused on covering primary care or catastrophic care.<sup>6</sup>

The first two budget constraints express second-period consumption depending on whether the individual ends up in a good or bad state of the world. For simplicity, we ignore the savings decision in period 1, to which we return below; thus the model simplifies to the second period conditional on assets  $A_{2j}$  saved from period 1. The value of insurance is twofold; first for the h-component of spending, to improve health and thus the likelihood of being in the good or healthy state

<sup>5</sup> One can also include  $H_2$  in the utility function, with an additional term reflecting its value in the utility function; this in turn would provide a source of inefficiency in the case of complete coverage, leading to the potential for moral hazard. While we acknowledge the risks of moral hazard for both catastrophic and primary care services (e.g., Cohen et al., 2015), we abstract from these in considering financial benefits.

<sup>6</sup> Examples in this paper include assessing the insurance value of public finance for a specific intervention (e.g. tuberculosis treatment) of expanded coverage of a comprehensive health benefit package (e.g. US Medicare). Methods of assessing the economic value of mortality reduction are much better developed for the former than the latter (Robinson et al., 2019b). A major increase in TB treatment in India, for example, would reduce annual mortality probability there by about  $10^{-4}$ , a number on the order of what is assessed in empirical studies of mortality reduction. Implementation of essential universal health coverage in lower middle-income countries might have a mortality effect four times as large at a cost of 2%–3% of GNI (Jamison et al. 2018b). Much care will be needed in extrapolating estimates of the value of health gains or of financial protection gains from small increments of change to large ones.

of the world, which has additional beneficial effects on aggregate income and tax revenue. The second is by subsidizing out-of-pocket spending for  $H_2$ , catastrophic health, it cushions the financial blow and implicitly narrows the consumption downturn between  $C_{2b}$  and  $C_{2g}$ . Of course, these programs are not free; individuals must pay for either or both programs through the income-dependent payment schedule  $P(Y)$ .

In this section, we consider the incremental *financial* benefits of expanding specific health insurance coverage (and thus do not focus on measuring the health benefit of spending on  $h_2$ ). We provide a framework for approximating benefits and costs, recognizing that in practice the measurement will depend very much on the individual country characteristics. To do this, we employ a first-order Taylor-series approximation of the utility function in period 2:

$$\Delta V \cong \pi_g U'(C_{g2}) \Delta C_{g2} + \pi_b U'(C_{b2}) \Delta C_{b2} \quad (3)$$

and we drop the  $j$ th (income) subscript for now. To allow for convenient numerical estimates, it is useful to assume further a commonly used utility function that exhibits constant relative risk aversion, so that  $U(C) = C^{1-\gamma}/1-\gamma$  where  $\gamma$  is the Arrow-Pratt coefficient of relative risk aversion (CRRA). We can therefore rearrange equation (3), and express the change in utility in “money-metric” monetary (e.g., in terms of renminbi, dollar, or peso) terms, evaluated in the healthy or good state of the world  $\Delta M \equiv \Delta V/U'(C_{g2})$  as the following:

$$\Delta M = \pi_g \Delta C_{2g} + \pi_b \theta \Delta C_{2b}, \quad (3')$$

where  $\theta$  is the ratio of marginal utilities in the good and bad states of the world. Using the CRRA assumption, this allows us to write  $\theta$  as depending on the (initial) difference in consumption in the good and bad states of the world:  $\theta = [C_{2g}/C_{2b}]^\gamma$ . For  $\gamma = 3$ , a commonly used measure of relative risk aversion, and a consumption gap arising both from out-of-pocket expenditures, and differences in consumption of (say) 40%, or  $\theta = 1.4^3 = 2.7$  the extent to which one would upweight an increase of \$1 in the bad state of the world relative to an increase of \$1 in the good state of the world. When  $\gamma = 1.5$ , so that individuals are less risk-averse, the value of insurance is still considerable;  $1.4^{1.5} = 1.7$ . This focus on the ratio of marginal utilities in the different states of the world is quite general to the model specification and other characteristics of risk-sharing in the economy (Baily, 1978; Gertler & Gruber, 2002; Chetty, 2009).

Using our example above, how might one evaluate an actuarially fair expansion of health insurance that raises health insurance coverage for catastrophic care? The per-person cost to the government is (to a first-order approximation)  $\pi_b H_2 \Delta \Phi$ . Everyone (in both good and bad health) thus pays an extra premium of  $\pi_b H_2 \Delta \Phi$ .

Then  $\Delta C_{2gj} = -\pi_b H_2 \Delta \Phi$ , and  $\Delta C_{2b} = (1 - \pi_b) H_2 \Delta \Phi$ , so that

$$\frac{\Delta M}{\pi_b H \Delta \Phi} = \pi_g (\theta - 1). \quad (4)$$

Note that the left-hand side of the equation is capturing the incremental increase in money-metric utility per dollar increase in the premium for the expanded health insurance. The result indicates that, if there were no need for risk-pooling, in the sense that consumption in both states of the world are equal, then there would be no net social benefit from risk reduction. However, in the example we considered before, where a 40% consumption gap is certainly possible (e.g., Xu et al., 2003; Jan et al., 2018), the net *financial* benefit to society from risk-pooling is roughly  $1.7\pi_g$  incremental dollars per dollar increase in the premium.<sup>7</sup>

This is of course a simplification; it does not capture additional complexities introduced if the marginal utility of consumption differs in the sick and healthy state (Finkelstein et al., 2013), nor does it account for efficiencies or inefficiencies associated with paying for insurance through taxation, or with moral hazard and adverse selection issues. Nor can this approximation be used in the case of a fundamental change in health insurance, where the incremental measure could overstate the full general-equilibrium benefits of premium increases; we suggest a modification to approximate global effects below. Nonetheless, this approach provides a first-order estimate of the financial benefits associated with a reduction in risk.

The second aspect of health insurance is its redistributive component. In this case, we consider high-income ( $j = r$ ) and low-income ( $j = p$ ) households, and with premiums that reflect their different income status. A simple example of redistribution arises when the  $P(Y)$  function becomes more progressive, so that higher-income enrollees pay more, and lower-income enrollees pay less, holding revenue constant. In this case, the introduction of UHC will have first-order effects on the tax and premium collections by income group; these of course should be measured to evaluate the extent of redistribution across incomes.

While we are not explicitly considering health outcomes in this paper, we do note that consumption in high- and low-income groups (and hence the degree of income inequality), and the degree to which they previously purchased health care in private markets, matter in assessing the distributional effects of health insurance expansion. For example, suppose that initially  $\varphi = 0$ , so there was an entirely private market for  $h_2$ . We would expect that when solving for (1b) and equations (2a)–(2c), that  $h_{2r}$  for high-income households would exceed  $h_{2p}$  for low-income

<sup>7</sup> Note that a micro-level simulation model may yield more accurate estimates; a representative agent model in which the single individual experiences an reduction in the copayment rate from 50% to 40% yields less in benefits than moving 10% of the population from no insurance at all to full coverage.

households, given that the demand for health care is greater among high-income households.

Suppose that the new policy initiative is to provide full coverage for  $h_2$ , and as a consequence the use of  $h_2$  rises, by different amounts, for both high- and low-income households. The utilitarian money-equivalent benefits of this improved health are approximated by:

$$\begin{aligned} \Delta M'_p + \Delta M'_r &= \frac{d\pi_g(h_{2r})}{dh_2} \left[ \frac{U(C_{2gr}) - U(C_{2br})}{U'(C_{2gr})} \right] \Delta h_{2r} \\ &+ \frac{d\pi_g(h_{2p})}{dh_2} \left[ \frac{U(C_{2gp}) - U(C_{2bp})}{U'(C_{2gp})} \right] \Delta h_{2p}. \end{aligned} \quad (5)$$

While this is a complicated equation, the intuition is straightforward. The first term on the right-hand side of the equation is the value of the incremental  $h_2$  for the high-income households, equal to the marginal impact on the probability of good health (evaluated at the initial level of high-income household  $h_2$ ) times the value of incremental utility that captures both health benefits in terms of mortality reduction or disability-adjusted life years (DALYs) or quality-adjusted life years (QALYs), as well as augmented incomes earned in the good state of the world.<sup>8</sup> The second term is the change in utility arising from better health in the low-income household, again where the marginal health effectiveness is evaluated at their initial level of  $h_2$ . We expect that among low-income households, this marginal effectiveness is larger (that is,  $(d\pi_g(h_{2p})/dh_2) \geq (d\pi_g(h_{2r})/dh_2)$ ) given that poorer households typically begin from a lower-initial level of  $h_2$ .

Equation (5) illustrates two aspects of measuring health benefits in the presence of income inequality; the first is well understood, the second less-so. First, the utility benefits for the high-income household is expressed in terms of the inverse of their marginal utility of consumption. Assuming diminishing marginal utility of consumption (consistent with a conventional concave utility function) means that a given difference in health (e.g., in terms of QALYs or DALYs) is weighted more for high-income than for low-income people (with a larger gap in more unequal societies), leading to the implication that saving the life of a high-income individual is worth more than saving the life of a low-income individual (see for example Fleurbaey et al., 2012; Hammitt, 2017). Within countries, this is sometimes addressed by implicitly weighting the value of improved health using the same monetary measure across the income distribution; practically this would imply weighting the second term in (5) such that the marginal utility of the low-income individual is equal to that of the high-income individual (where the weight  $\Psi$  would be chosen so that  $\Psi = U'(C_{2gp})/U'(C_{2gr})$ ).

<sup>8</sup> This follows Fleurbaey et al. (2012), who also use good health as the appropriate reference point.



The second issue in measuring benefits of insurance expansion relates to crowding out of private payments. For example, Verguet et al. (2015) found that the crowding out of private payments for TB treatment in India would potentially benefit the higher-income groups that were initially able to afford private payment for care. Note that the change in spending  $\Delta h_{2j}$  for the primary or preventive care can differ by income group, leading to differential health effects by individuals relates to the degree to which health care rises or falls. Yet by making primary care  $h_2$  free to consumers as assumed above (or more generally, by reducing its price), there is a crowding out of private spending that has now been replaced by public spending (Baicker et al., 2013).

For example, suppose that the new level of health care spending for high-income households is the same as it was previously. This is a special case that would occur (for example) if capacity constraints on the supply-side limit the quantity of services that can be utilized by high-income households. More generally, there could also be changes in quality-adjusted  $h_{2r}$ , for example if private providers with poor prognostic skills are crowded out, as in Udwardia et al. (2010), thus raising quality, or if providers skimp following a health insurance expansion, as in Rao (2017), thus reducing quality.<sup>9</sup>

In this example with no change in  $h_{2r}$ , the high-income household now is receiving the same health benefits as previously at no cost, so they save  $h_{2r}$  in out-of-pocket spending. The low-income household would also save  $h_{2p}$ , but since  $h_{2r} > h_{2p}$ , the impact of this health insurance expansion is to expand the potential non-health consumption of high-income households by more than for low-income groups. Of course, this shift can be offset by a sufficient hike in the premiums they pay,  $\Delta P(Y)$ , but without much progressivity in the premium assessments, the net financial effect could be to redistribute from poor to rich, even if the health benefits (e.g., the incremental health spending) are greater for the low-income group. Measuring such distributional effects requires data on out-of-pocket spending by income group, as we consider below in our example.

The third way in which expanded coverage can improve lifetime utility is by smoothing consumption over the life cycle by encouraging pre-payment of insurance premiums (e.g., Xu et al., 2007). To see this, we step back to our two-period model, where the intertemporal first-order condition for consumption can be written

---

<sup>9</sup> Rao (2017) describes how in the state of Chhattisgarh, in India, the provision of a universal health benefit leads to a reduction in the quality of care as “[p]atients going for simple ailments are often subjected to unnecessary procedures by hospitals for maximizing insurance claims”. This report also emphasizes the importance of moral hazard at the provider level.

(again suppressing the  $j$ th subscript)

$$U'(C_1) - \frac{\pi(1+r)}{1+\delta} \{\pi_b U'(C_{b2}) + \pi_g U'(C_{g2})\} = 0. \quad (6)$$

This will hold whether there is insurance or not; for utility functions (such as CRRA) exhibiting the precautionary motive, when there is uncertainty in the future, the marginal utility of consumption while young will be higher; equivalently first-period consumption will be reduced, leading to more saving against those future potential contingencies. A transition to prepaid care may thus reduce the need for precautionary savings (Skinner, 1988), although it could at the same time create more liquidity constraints (Hubbard & Judd, 1987). This effect can be quantitatively substantial as, for example, in urban China where an increase in public expenditures on healthcare led to increases in household consumption of twice the amount (Barnett & Brooks, 2010).

A further potential benefit is that paying into a payroll tax while young provides a commitment mechanism to counter the tendency to continually postpone beginning a saving program that is desired, a tendency ascribed to non-constant discount rates (Samuelson, 1937; Laibson, 1997). Poor access to banks or other saving mechanisms that make it difficult to accumulate privately for future health costs amplify the argument for public mechanisms. In this case, first-period consumption is too high, so the marginal condition is no longer equal to zero:

$$U'(C_1) - \frac{\pi(1+r)}{1+\delta} \{\pi_b U'(C_{b2}) + \pi_g U'(C_{g2})\} = \Upsilon < 0. \quad (6')$$

In this case,  $\Upsilon$  is the “hyperbolic” factor or the net constraint on saving that leads to inefficiency in the intertemporal allocation of consumption. Here the potential gains of moving \$1 from period 1 to period 2 (in present value) through premiums, taxes, or other mechanisms by raising  $P(Y_1)$  and reducing  $P(Y_2)$  is similar in approach to our earlier discussion of raising consumption when health is bad – in both cases, we use financing mechanisms to smooth consumption, whether across health states (as in risk reduction, above) or over time, as in this case. Thus we would use the same approach as in (4) that relies on the magnitude of  $\Upsilon$  (and hence the extent to which individuals overconsume in period 1) to estimate the gains from smoothing.<sup>10</sup> It is, however, more challenging to determine the true value of  $\Upsilon$ , and whether it represents a “market failure” or individual preferences, than it is to determine risks of unexpected medical expenses.

<sup>10</sup> We assume for simplicity intertemporal separability, so that the CRRA within a time period is equal to the inverse of the intertemporal elasticity of substitution.

This life-cycle perspective also emphasizes that benefits and costs may vary systematically across age groups, particularly when a “pay-as-you-go” system is introduced that assesses a payroll tax on the younger working population that is used to provide benefits to an older population who had not paid into the program for many years.<sup>11</sup> Thus the policy analyst may also want to consider the distributional effects of an insurance expansion among age groups (Hammitt, 2017), as well as across income groups (Robinson & Hammitt, 2018b).

There are two additional factors that complicate benefit-cost evaluations of health insurance. The first is moral hazard. Because health care services are subsidized, beneficiaries may consume too much. Yet most of the literature on moral hazard suggests that individuals have a difficult time distinguishing between “high-value” and “low-value” care; higher copayments are as likely to discourage care among the sickest patients as among those less sick (Brot-Goldberg et al., 2017). And when there is a social welfare function of the type specified above, or even commodity egalitarianism that favors health care, we may want to minimize copayments for the poor, but perhaps not as much for the rich.

The second factor which may make cost benefit analysis of insurance more complex is the distortionary social costs of higher taxes (or deadweight cost of taxation) which could tilt the benefit-cost analysis into negative territory if distortionary taxes are used to provide health care services that higher-income households previously purchased privately (Baicker et al., 2013). When UHC involves large-scale tax reform, one requires more attention to the design of new taxes and user fees. For example, to the extent that public revenue comes from excise taxes on behavior to be discouraged (e.g. carbon and tobacco taxes) the “distortion” introduced by taxes can be partially mitigated or potentially even welfare improving.

### 3 Policy issues and a numerical example

What are the lessons from the literature for valuing the financial benefits of insurance expansions and universal health coverage? First, as has been well understood since Arrow (1963), health insurance not only improves health, but also reduces financial risk, and any benefit-cost analysis should reflect such benefits. Indeed, in high-income countries the financial benefits of health insurance are often easier to measure than short-term health benefits (Finkelstein & McKnight, 2008; King et al., 2009; Finkelstein et al., 2012). But in benefit-cost or cost-effectiveness

---

<sup>11</sup> These age-related effects are likely to be more modest in LMICs with greater burden of infectious diseases for younger populations but will become more pronounced over time as non-infectious diseases of older people account for a larger fraction of the health care budget.

analysis, tracing out the benefits of health insurance is not simple, as it has potentially wide-ranging effects on both prices and quantities in the health care sector, as was demonstrated by Verguet et al. (2015) in their extended CEA analysis. What should the benefit-cost analyst do in the face of all this complexity? In this section, we introduce a very simple example that shows how these financial factors could be implemented in a CBA. We note again that our example is limited only to evaluating our three risk-related and distributional factors, and not to any potential health gains, nor to potential inefficiencies arising from moral hazard or efficiency costs arising from raising taxes.

Our stylized example is shown in Table 1, with two groups, those with low incomes of \$1000 in U.S. Dollars (80% of the population) and those with high incomes of \$4000 (20% of the population); consumption is equal to income for the low-income group, and slightly less than income (\$3800) for the high-income group. We assume an expansion of the existing insurance system that will increase per capita spending by \$70, which is fully funded by an increase in premiums or tax payments of \$50 for the lower-income group, and \$150 by the higher-income group.

### 3.1 Measuring the financial value of lower-health care risk

As noted above, we use a measure of the incremental value of reducing risk (e.g., Gertler & Gruber, 2002; Chetty, 2006; Chetty & Looney, 2006) as:

$$\text{Financial value per dollar premium} = \pi_g(\theta_j - 1), \quad (4')$$

where as in (4),  $\theta_j$  depends on the degree of risk aversion, and the magnitude of the consumption decline arising from unpredictable medical expenses.

One might be concerned that this measure understates the true benefit, because it is hard to assess or value financial benefits among a group of people with very little income that they can use to pay.<sup>12</sup> However, our approach mitigates these concerns, for at least two reasons. First, by evaluating the financial value of insurance for those in the “good” state of the world, as we do in (4'), we implicitly weight the value of financial protection for lower-income people higher than the traditional willingness to pay measures. And second, as we discuss below, it is possible to use

<sup>12</sup> Expenditures easily afforded by the middle class may well be catastrophic for the poor. This observation suggests that a health benefits package covering catastrophic expenditures for the poor will inevitably cover expenditures easily managed by the better off.

**Table 1** Illustrative calculations of the financial impact of health insurance expansion.

	Low income	High income	Combined
<b>Background statistics</b>			
Income (in dollars)	\$1000	\$4000	
Consumption (in dollars)	\$1000	\$3800	
Share of population	0.80	0.20	
New insurance premium/taxes	\$50	\$150	
Average benefit (per capita) (1)	\$70	\$70	
<b>Value of reducing financial risk</b>			
Likelihood of adverse event	0.10	0.10	
Cost of adverse event (H)	\$400	\$400	
Insurance coverage of adverse event	50%	50%	
Consumption change (in absence of insurance)	-40%	-11%	
Consumption change (with insurance)	-20%	-5%	
Approx. financial value of insurance (2)	\$41	\$5	
<b>Redistributional effects</b>			
Conventional distributional effects of insurance	\$20	-\$80	
Initial primary care (h): paid out of pocket	\$10	\$40	
Post-insurance primary care (h): 100% covered	\$50	\$50	
Change in primary care utilization	\$40	\$10	
<b>Consumption smoothing</b>			
Ratio of discounted marginal utility of consumption	0.90	0.95	
Value of consumption smoothing (3)	\$5	\$6	
<b>Summary</b>			
	Low income	High income	Combined
Conventional distributional effects of insurance	\$20	-\$80	\$0
Value of financial risk reduction	\$41	\$5	\$34
Consumption-smoothing benefits	\$5	\$6	\$5
Total financial value (risk reduction and transfers)	\$66	-\$69	\$39

*Notes:* Constant relative risk aversion measure equal to 3.0.

(1) Average benefit =  $0.8 \times 50 + 0.2 \times 150$ .

(2) For the low-income group, the value of the reduction in risk per dollar benefit is approximated by  $0.90^*(((1000/600)^3 - 1) + ((1000/800)^3 - 1))/2$ .

(3) For the low-income group, the smoothing gain is approximated by  $((1000/900)^3 - 1) + 1)/2$ , multiplied by the half of the tax payment ( $\$50/2$ ) assumed paid in period 2.

implicit weights in a social welfare such that a given dollar benefit for lower-income household counts for more than for a higher-income household.<sup>13</sup>

**13** For example, evaluating the distributional consequences of a UHC plan by considering the percentage change in disposable income across the income distribution corresponds to a utilitarian social

Another concern is that this equation could overstate the potential benefits because we are pricing the risk reduction for a small change, but the value of further risk reduction becomes attenuated for larger health insurance reforms with more comprehensive coverage. We address this by calculating the marginal benefit of risk reduction at the starting point, and then at the ending (post-reform) point; and then take the average of these two marginal effects.<sup>14</sup>

For example, in Table 1 we calculate the financial benefit of the insurance program that provides 50% coverage for an adverse event ( $\Phi = 0.5$ ) with the probability of the adverse event ( $\pi_b$ ) equal to 0.10 for both high- and low-income households. Using our earlier estimate that a catastrophic event could account for as much as 40% of consumption, we use \$400 as our summary approximation of the catastrophic cost, so the proposed insurance reform would reduce out-of-pocket costs from \$400 to \$200 for both income groups. Using the average of (4'), we can calculate the benefit to lower-income people as \$41 (or roughly double the expected premium cost of the catastrophic component of the insurance reform), but only \$5 for the higher-income households, for whom the \$400 expense is a much smaller fraction of consumption.

Note also that the calculation depends on whether individuals are receiving a more generous coverage package (in which case the “copayment” rate declines), or whether more people are receiving any coverage (in which case a fraction of the population is provided with health insurance). The latter type of expansion will generate larger relief to financial risks than the former.<sup>15</sup>

### 3.2 Estimate the incidence-based measures of expanded health insurance

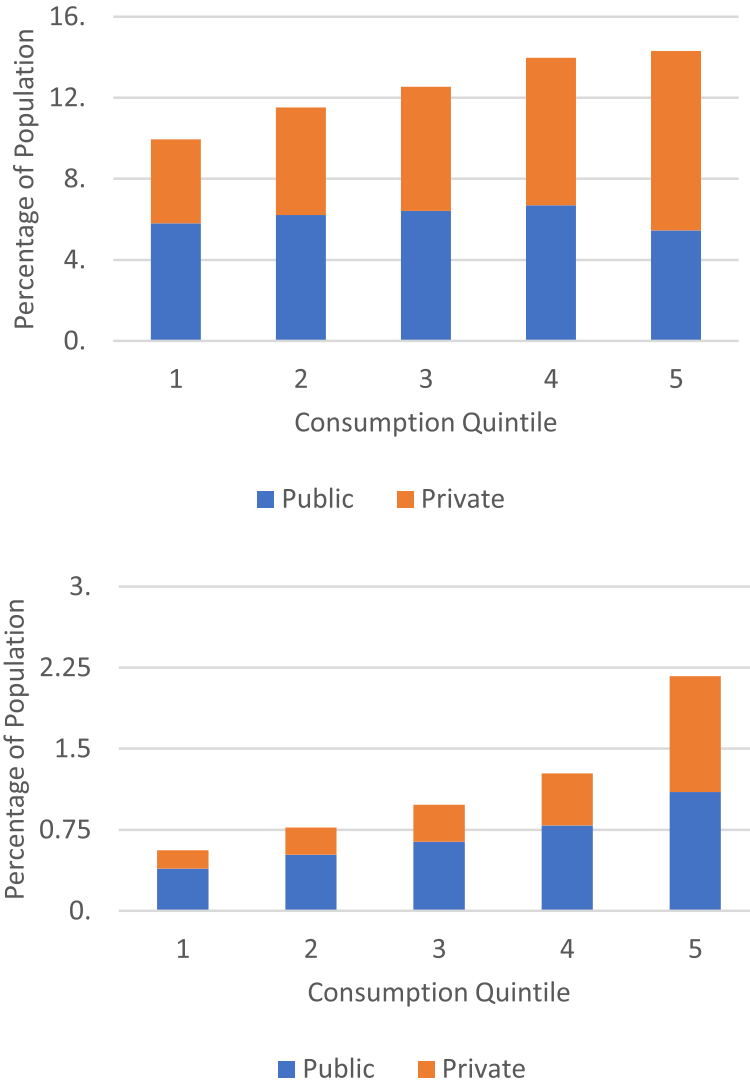
There is considerable evidence in the literature that coverage and utilization is regressive rather than progressive in some countries (e.g., Castro-Leal et al., 1999; Akazili et al., 2014). One example of this can be seen in Figure 2(a) (for health clinics) and Figure 2(b) (for hospital admissions), using data from Lanjouw et al. (2002)

---

welfare function with log-utility. That is, if the social welfare function is utilitarian, we would simply add utility for (in our simple case) low and high incomes:  $W_p + W_r$ . When  $W$  is in the form of log-utility, a proportional increase in lifetime resources for the low-income household more than offsets a proportional decrease for the high-income household.

<sup>14</sup> This is similar to a Taylor-series approximation, except that the post-reform point is calculated exactly, and not approximated.

<sup>15</sup> This is because expanding coverage from (say) 50% of actuarial insurance costs to 60% has only an incremental benefit to each person relative to expanding coverage from 50% to 60% of the population, in which case 10% of the population are newly covered.



**Figure 2** (a) Percentage of Population Making Clinic Visits: Indonesia, 1997. (b) Percentage of Population Making Hospital Visits: Indonesia, 1997. Sources for both Figures 2(a) and 2(b): Lanjouw et al. (2002).

on 1997 incidence data from Indonesia. The outcome is the percentage of people who visited either a clinic (in 2(a)) or a hospital (in 2(b)) during the year. As can be seen, there is a strong upward slope with regard to consumption quintiles. (Consumption is viewed as a better way to measure ability to pay compared to

income, the latter of which may fluctuate year to year); this is more pronounced with regard to private purchases, but it is positively sloped over most income levels even when considering publicly provided care in hospitals – that is, even publicly provided care is providing greater benefits to high-income compared to low-income households.<sup>16</sup>

In Table 1, we consider the distribution impact of our hypothetical insurance reform. Under the conventional distributional measures of losers and gainers (again, without consideration of any health effects), the net gain in dollar terms would be \$20 for the low-income group (\$70 in benefits minus \$50 in costs) and – \$80 for the highest income group (\$70 in benefits minus \$150 in costs). The catastrophic component of the plan has an expected cost of \$20 per capita (\$200 benefit times the 10% probability it occurs), which (for simplicity) is distributed equally to both high- and low-income households, as noted earlier. In addition, the insurance reform provides for free primary or preventive care, which we value at \$50 per capita, again provided equally to high- and low-income households.<sup>17</sup>

We also document the extent of “crowding out” of private by public spending.<sup>18</sup> As shown in Table 1, the increment in primary care spending ( $h_2$ ) is much greater for lower-income households (\$40) compared to the higher-income households (\$10); thus one might expect larger health benefits for the lower-income group (not included in this calculation). That said, the higher-income group also saves \$40 that they would have spent on health care now that it is free, more than the \$10 saved by the lower-income group.<sup>19</sup>

More complicated models would allow for large income and substitution effects. For example, when copayments are modest, providing insurance could encourage high-income households to expand their spending considerably compared to lower income, thus leading to even more of the subsidies flowing to higher-income households, as was found in China by Wagstaff and Lindelow (2008). However, for the benefit-cost analyst working with limited data in LMICs, these perverse effects would be difficult to predict *ex ante*.

Another complication of accounting for distributional changes resulting from insurance expansion is that in many countries, there are multiple insurance programs for different groups of the population. For example, in Thailand, India, Jordan, and other countries, health insurance for civil servants is considerably more

<sup>16</sup> As noted above, these potentially regressive income flows may be offset by progressive welfare gains arising because of risk reduction (McClellan & Skinner, 2006).

<sup>17</sup>  $\varphi = 1.0$ ,  $h_2 = 50$ .

<sup>18</sup> One may also calculate these distributional effects by age group, gender, and by region. More complicated measures of tax incidence include second-order changes in relative wages and returns to capital; these are not recommended when the focus is on health insurance.

<sup>19</sup> This assumes that the quality of the publicly provided care is equivalent, an assumption that is discussed below.



generous than the basic schemes for the rest. This is an example of where the transfer function of health insurance – which usually serves to equalize social resources – may work in reverse, by subsidizing higher-income employees if the frequently associated payroll taxes are insufficient to cover costs. And while the more generous benefits for civil servants could simply be schemes to raise otherwise low salaries, a full accounting of the distributional effects of one system's insurance expansion would require understanding how the targeted expansion might affect some other potentially overlapping insurance program.

In a world where there are likely to be both winners and losers across the income distribution, how does the benefit-cost analyst determine whether the insurance expansion yields on net a social gain or loss? One seemingly simple solution is a social welfare function, which aggregates changes in well-being across high- and low-income groups, with typically greater weights for lower-income households (see Phelps et al. (2018)). The challenge to using a social welfare function is that while we recognize the value of redistribution, there is no obvious social welfare function that will correspond to the “right” value. Instead, any tradeoffs (or range of tradeoffs) should in theory be revealed through a collective decision-making process informed by explicit social value judgments made by accountable individuals on behalf of the whole community, and that captures “extra-welfare” benefits that accrue to the community – all factors that are likely unknown to the analyst.<sup>20</sup> Thus we suggest caution with regard to the use of a social welfare approach, but instead recommend simply providing the net gains (or losses) by income group, where the financial net benefits could also be reported separately from any predicted health gains.

It is also worthwhile to focus explicitly on changes in the distribution of health and net income among the lowest income groups (see Asaria et al., 2015). Protecting the most vulnerable from healthcare-spending-related debt (or from disease) is much less controversial than income redistribution. Providing an in-kind transfer of health care insurance, rather than simply cash, can provide additional public support (see Currie & Gahvari, 2008). For these reasons, accounting separately for improved access to care across the income distribution, and among the most vulnerable, but without making explicit tradeoffs, is likely the best approach to creating a politically viable benefit-cost evaluation. A separate paper for this project (Robinson & Hammitt, 2018b) reviews in more detail the multiple issues associated with whether and how to consider the distributional impact of health-related investments.

---

<sup>20</sup> Fleurbaey et al. (2013) have argued that an “equivalent income” measure of social welfare respects individual preferences, thus avoiding some of the criticisms directed at conventional social welfare functions.

### 3.3 Measuring the benefits arising from “front-loading” insurance payments

While there is general agreement that health insurance reduces financial risk, there is less understanding of its other effects on individual and societal well-being over the life cycle. For example, health insurance funded by a payroll tax rather than age-specific premiums, as in many systems, tends to collect revenues from people years before they actually need the care. As noted in Section 2, this provides a benefit by smoothing payments over time, providing an annuity rate of return, and helping to offset the possibility of present bias and other behavioral factors that may otherwise work to discourage the purchase of private health insurance.

How does one value this “front-loading” of health insurance benefits? While we are not aware of evidence from the literature on health insurance, there is more research on the value of a social security annuity arising from payroll taxes; unfortunately, the evidence ranges too widely (e.g., Hubbard & Judd, 1987; Brown et al., 2007) to provide much guidance to benefit-cost analysts. Based on the previous evidence, however, biases appear to favor under-saving for future contingencies (e.g., Laibson, 1997), which coupled with inadequate saving mechanisms and secular increases in health care premiums, would suggest a net benefit of moving the costs of second-period health spending earlier into the life cycle when wages have risen over the life cycle, but workers are still relatively healthy. If we assume that there is an accumulated bias of 10% over an entire “period” – quite reasonable relative to typical estimates of hyperbolic discounting – for the lower-income group, and a smaller 5% gap for the high-income group, then the long-term effects of a UHC that assesses (say) half of the funding in period 1 would yield a life-cycle improvement of an additional \$5 and \$6, respectively, for the low- and high-income groups; the high-income group benefits slightly more in dollar terms because they are facing a larger financial burden (\$150 rather than \$50). Further research is needed to better understand these potential biases by income group, and indeed the design of UHC could harness those behavioral biases to encourage early participation and support (Skinner & Volpp, 2017).

We sum up these three effects at the bottom of Table 1, along with the sum over both groups. As expected, the conventional societal non-health effects of a fully funded health insurance program are zero; some people pay in, while others pay out. Adding in risk reduction leads to an incremental (and societal) benefit primarily to lower-income households, while adjusting for consumption smoothing yields small benefits to each income group. In sum, our adjusted financial benefit measure yields a considerably more progressive (and higher net social gain) estimate of the non-health benefits of health insurance, with more than triple the monetary benefits to

lower-income groups, and a slightly smaller decline financial for the higher-income groups.

## 4 Conclusion

There is considerable enthusiasm for expanding the use of health insurance to cover increasingly large fractions of the world's populations (The Economist, 2018), but there is some confusion about how to measure the benefits arising from such expansions. Related papers address closely related issues surrounding the valuation of longevity (Robinson et al., 2019b) and morbidity (Robinson & Hammitt, 2018a) risk reduction, among others. In this study, we considered how best to value the financial benefits, in terms of pooling risk, intertemporal consumption smoothing, and redistribution, of expanded health insurance programs. Perhaps not surprisingly, we find that measuring insurance benefits is complicated and specific to the country setting, yet still critical to judging the value of greater insurance protection. Our objective was to provide simple and implementable approaches to assessing both risk-reduction and redistributive effects of health insurance expansion.

The financial value of a health insurance expansion depends critically on what the expansion covers, and what it does not. High-value preventive services (e.g.,  $h_{2j}$  in the model above) are likely to provide larger health benefits by improving access and affordability of cost-effective primary care,<sup>21</sup> particularly where there are spillover effects through (e.g.) immunization services or a downstream reduction in catastrophic costs resulting from improved population health.<sup>22</sup> By contrast, the catastrophic coverage ( $H_2$ ) provides, on average, deeper reductions in financial risk and the ability to buy levels of health care not previously affordable.

For example, some have argued against UHC because covering the smaller expenses (e.g., a visit to a clinic) could “crowd out” public or private health efforts and preclude a meaningful reduction in financial uncertainty (e.g., Hammer, 2015). We do not claim to resolve these difficult tradeoffs, but our model does suggest that the tradeoffs can be better understood by focusing on key country-specific parameters such as the existing coverage provided by private insurance, the incremental health benefits of expanded primary care (and the ability of the country to staff the new clinics), the costs to families of catastrophic events, potential payoffs arising from purchasing consolidation, and the estimated efficiencies from prevention and

<sup>21</sup> For sufficiently poor households, even primary care services could be “catastrophic” for the monthly budget.

<sup>22</sup> It is for this reason, presumably, that Group Health in Seattle included with its catastrophic coverage only plan 6 primary care visits per year at minimal copay

early treatment that can arise from reducing the need for expensive hospitalizations. More generally the question of how most efficiently to provide financial protection remains far less understood than the parallel question of efficiency in producing health outcomes.

In practice, some countries set up two separate funds (simultaneously or sequentially): one for catastrophic costs and one for routine more predictable and less costly (though possibly longer-term) care; Mexico is one such example. Thailand originally instituted UHC without costly interventions such as anti-retroviral treatment and dialysis included – and has now included these (Tangcharoensathien et al., 2018). Similarly Indonesia's insurance program (BPJS) and India's National Health Scheme are now including dialysis in their benefits' packages. Other countries expand coverage for all for everything (Turkey); others exclude expensive care or leave it to development partners (e.g. Ghana's National Health Insurance Scheme excludes HIV, tuberculosis, and malaria care). To evaluate both health-related and financial benefits of these (complex) insurance systems therefore requires country-specific information that may in practice be difficult to collect.

We have less to say about the value of having an integrated universal system, as opposed to a publicly funded safety net targeting the poorest while the wealthier sustain their private sector plans. In LMICs, the universal option often appears to deliver better outcomes at the population level; middle (and upper) classes have little interest in funding or sustaining the quality of a healthcare system from which they are excluded. The South African system is a case in point whereby less than 20% of the population absorb more than half of healthcare resources, with a significant socioeconomic and race bias (Ataguba et al., 2011). In addition to significant inequalities in access and outcomes, South Africa's two-tier system constitutes a major obstacle to achieving the government's vision of quality healthcare for all (Gqirana, 2016). Similarly, in Peru, the experience of an approach targeting the poor have been mixed (Neelsen & O'Donnell, 2017). The Lancet's Commission on Investing in Health (CIH) (Jamison et al., 2013) concluded, however, that even in high-income countries use of out-of-pocket payments and private voluntary insurance will in all likelihood leave a substantial uninsured population. While the CIH and the global health community have come out in favor of a (hybrid) progressive universalism approach as countries transition toward UHC, the targeting vs universalism debate in social policy is ongoing (e.g., Desai, 2017).

Although benefit-cost analysis may in some contexts influence outcomes, UHC is often determined not by maximizing a social welfare function, but through a collective decision-making process, and in fact UHC has often arisen as an election commitment device, as in Indonesia and in Turkey, as well as in high-income countries such as England where again the consensus on the National Health Service

plays a critical role in elections. In this contrarian view, designing a UHC that captures political support – in part for financial protection provided – may ultimately be the deciding factor in actual implementation (Phelps et al., 2018).

There are several characteristics of health insurance that we have not addressed explicitly in this paper. For example, an additional and often neglected potential advantage of expanded coverage is that it provides much better bargaining power for enrollees seeking to reduce (e.g.) drug prices or other procurement decisions; a “countervailing power” in the sense of Galbraith (1952). This can allow for more services, lower copayments, attenuated taxes, or all three. Empirically, the ability to pool resources more effectively including when procuring commodities is a good predictor of countries’ successful “financing transition”, (Fan & Savedoff, 2014) and in the ability to provide universal health coverage (UHC), this pooling is critical.<sup>23</sup> Whether regulated prices or so-called reference pricing can provide the same benefits is more contentious, particularly if regulated prices lead to expanded utilization and potentially higher expenditures (Prada et al., 2018).

For medical inputs purchased from other countries, this argument is reasonable; in a LMIC setting, government officials should not care whether Pfizer earns higher or lower profits on drug sales. But when the healthcare providers are domestic, one might still want to consider how they are affected, as the health ministry’s savings could represent a reduction in nurse salaries or other payments to domestic providers. Conversely, efforts to protect a domestic pharmaceutical industry with protectionist policies would worsen budgetary pressures for the domestic health system.<sup>24</sup>

A more challenging topic in LMICs is how to insure against the need for long-term care. The potential benefits from insuring against the enormous costs of long-term care or providing an annuity for family assistance later in life are considerable. But with higher-income people living longer, the potential for even regressive income distributional consequences are always present, as has been noted recently for the U.S. Social Security system (Isaacs & Choudhury, 2017). For this reason, and more importantly the large and adverse budgetary implications, long-term care insurance is contentious even in many wealthy countries.

<sup>23</sup> In low income with significant donor presence, pooled purchasing stands at 80% and is public funds. In LMICs, 70%–80% is private OOP spending. Part of the problem is a governance and planning vacuum in taking advantage of the potentials for pooling; one hurdle is in countries with pervasive rent-seeking and a highly entrenched and regressive private sector comprising both providers and insurers (Rosen et al., 2017).

<sup>24</sup> For example, the “Buy Uganda, Build Uganda” policy that requires that government ministries must purchase domestic products where possible. See: [http://www.mtic.go.ug/index.php?option=com\\_content&view=article&id=225:bubu-launch&catid=2&Itemid=124](http://www.mtic.go.ug/index.php?option=com_content&view=article&id=225:bubu-launch&catid=2&Itemid=124).

As a larger share of government budgets are devoted to providing national insurance coverage, the use of randomized trials and other types of studies will be increasingly important to ensure that the expansions deliver sufficient value given their large costs (Finkelstein et al., 2012). Identification of which specific health conditions are most responsible for financial risk, and how their impact can best be mitigated, will help guide development of health benefit packages. While this paper has attempted to lay out a basic structure for analysis to value the financial benefits of health insurance, there is a clear need for more and better empirical knowledge, both through estimation of the key parameters, and especially careful case studies. All of these advances will allow policy analysts to better quantify improvements in health, reductions in inequality, and benefits of reducing financial risk arising from the expansion of health insurance around the world.

**Acknowledgments:** We are grateful to Dave Greenberg, James Hammitt, Julian Jamison, Carol Levin, Erzo Luttmer, Thomas McGuire, Lisa Robinson, Saty Satyamurti, Mark Shepard, Kathy Stroffolino, two anonymous reviewers and participants at the Guidelines for Benefit-Cost Analysis Project Methods and Case Studies Workshop, November 2017 at Harvard University, for very helpful suggestions and comments. We are also grateful to the Bill & Melinda Gates Foundation for support through a grant to the Harvard T.H. Chan School, “Benefit-Cost Analysis Reference Case: Principles, Methods, and Standards” [OPP1160057], and to the National Institute on Aging (P01 AG019783). The views expressed in this paper are those of the authors and do not necessarily reflect the views of these organizations or the benefit-cost analysis project team.

## References

- Akazili, James, Paul Welaga, Ayaga Bawah, Fabian S. Achana, and Abraham Oduro et al. 2014. “Is Ghana’s Pro-Poor Health Insurance Scheme Really for the Poor? Evidence from Northern Ghana.” *BMC Health Services Research*, 14(1): 637.
- Asaria, Miqdad, Susan Griffin, Richard Cookson, Sophie Whyte, and Paul Tappenden. 2015. “Distributional Cost Effectiveness Analysis of Health Care Programmes – A Methodological Case Study of the UK Bowel Cancer Screening Programme.” *Health Economics*, 24(6): 742–754.
- Ataguba, John E., James Akazili, and Di McIntyre. 2011. “Socioeconomic-related Health Inequality in South Africa: Evidence from General Household Surveys.” *International Journal for Equity in Health*, 10(1): 48.
- Arrow, Kenneth J. 1963. “Uncertainty and the Welfare Economics of Medical Care.” *The American Economic Review*, 53(5): 941–973.
- Baicker, Katherine and Helen Levy. 2012. “The Insurance Value of Medicare.” *New England Journal of Medicine*, 367(19): 1773–1775.

- Baicker, Katherine, Mark Shepard, and Jonathan Skinner. 2013. "Public Financing of the Medicare Program will Make its Uniform Structure Increasingly Costly to Sustain." *Health Affairs*, 32(5): 882–890.
- Baily, Martin Neil. 1978. "Some Aspects of Optimal Unemployment Insurance." *Journal of Public Economics*, 10(3): 379–402.
- Barnett, Susan and Ray Brooks. 2010. "China: Does Government Health and Education Spending Boost Consumption?" International Monetary Fund. Working Paper 10/16.
- Brot-Goldberg, Zarek C., Amitabh Chandra, Benjamin R. Handel, and Jonathan T. Kolstad. 2017. "What does a Deductible Do? The Impact of Cost-Sharing on Health Care Prices, Quantities, and Spending Dynamics." *The Quarterly Journal of Economics*, 132(3): 1261–1318.
- Brown, Jeffrey, Marcus D. Casey, and Olivia Mitchell. 2007. "Who Values the Social Security Annuity? New Evidence on the Annuity Puzzle". National Bureau of Economic Research.
- Castro-Leal, Florencia, Julia Dayton, Lionel Demery, and Kalpana Mehra. 1999. "Public Social Spending in Africa: Do the Poor Benefit?" *The World Bank Research Observer*, 14(1): 49–72.
- Chetty, Raj. 2006. "A General Formula for the Optimal level of Social Insurance." *Journal of Public Economics*, 90(10–11): 1879–1901.
- Chetty, Raj. 2009. "Sufficient Statistics for Welfare Analysis: A Bridge between Structural and Reduced-Form Methods." *Annual Review of Economics*, 1(1): 451–488.
- Chetty, Raj and Adam Looney. 2006. "Consumption Smoothing and the Welfare Consequences of Social Insurance in Developing Economies." *Journal of Public Economics*, 90(12): 2351–2356.
- Cohen, Jessica, Pascaline Dupas, and Simone Schaner. 2015. "Price Subsidies, Diagnostic Tests, and Targeting of Malaria Treatment: Evidence from a Randomized Controlled Trial." *American Economic Review*, 105(2): 609–645.
- Currie, Janet and Firouz Gahvari. 2008. "Transfers in Cash and In-Kind: Theory Meets the Data." *Journal of Economic Literature*, 46(2): 333–383.
- Desai, Raj. 2017. "Rethinking the Universalism Versus Targeting Debate". Future Development (Blog), Brookings Institution. <https://www.brookings.edu/blog/future-development/2017/05/31/rethinking-the-universalism-versus-targeting-debate/>.
- The Economist. 2018. "Universal Health Care, Worldwide, is Within Reach. The Case for it is a Powerful One Including in Poor Countries". Available at <https://www.economist.com/leaders/2018/04/26/universal-health-care-worldwide-is-within-reach> (accessed April 26 2018).
- Fan, Victoria Y. and William D. Savedoff. 2014. "The Health Financing Transition: A Conceptual Framework and Empirical Evidence." *Social Science & Medicine*, 105(March 1): 112–121.
- Feldman, Roger and Bryan Dowd. 1991. "A New Estimate of the Welfare Loss of Excess Health Insurance." *American Economic Review*, 81(1): 297–301.
- Finkelstein, Amy and Robin McKnight. 2008. "What did Medicare do? The Initial Impact of Medicare on Mortality and Out of Pocket Medical Spending." *Journal of Public Economics*, 92(7): 1644–1668.
- Finkelstein, Amy, Sarah Taubman, Bill Wright, Mira Bernstein, and Jonathan Gruber et al. 2012. "The Oregon Health Insurance Experiment: Evidence from the First Year." *The Quarterly Journal of Economics*, 127(3): 1057–1106.

- Finkelstein, Amy, Erzo F. P. Luttmer, and Matthew J. Notowidigdo. 2013. "What Good is Wealth Without Health? The Effect of Health on the Marginal Utility of Consumption." *Journal of the European Economic Association*, 11(1): 221–258.
- Fleurbaey, Marc, Stéphane Luchini, Christophe Muller, and Erik Schokkaert. 2012. "Equivalent Income and Fair Evaluation of Health Care." *Health Economics*, 22(6): 711–729.
- Flores, Gabriela and Owen O'Donnell. 2016. "Catastrophic Medical Expenditure Risk." *Journal of Health Economics*, 46(3): 1–15.
- Galbraith, John K. 1952. *American Capitalism: The Concept of Countervailing Power*. New Brunswick New Jersey: Houghton Mifflin.
- Gertler, Paul and Jonathan Gruber. 2002. "Insuring Consumption against Illness." *American Economic Review*, 92(1): 51–70.
- Ghebreyesus, Tedros A. 2017. "All Roads Lead to Universal Health Coverage. Commentary." *The Lancet*, 5(9): e839–e840.
- Gqirana, Thulani. 2016. "Private Healthcare a 'Sick Situation' – Motsoaledi. News24 (South Africa)". <https://www.news24.com/SouthAfrica/News/private-healthcare-a-sick-situation-motsoaledi-20160311>.
- Hammitt, James K. 2017. "Extrapolating the Value Per Statistical Life Between Populations: Theoretical Implications." *Journal of Benefit-Cost Analysis*, 8(2): 215–225.
- Hammer, Jeffrey. 2015. "Why Advocating Universal Free Primary Health Care is Irresponsible at Best". Future Development (Blog), Brookings. <https://www.brookings.edu/blog/future-development/2015/08/28/why-advocating-universal-free-primary-health-care-is-irresponsible-at-best/>.
- Hubbard, R. Glenn and Kenneth L. Judd. 1987. "Social Security and Individual Welfare: Precautionary Saving, Borrowing Constraints, and the Payroll Tax." *American Economic Review*, 77(4): 630–646.
- Isaacs, Katelin P. and Sharmila Choudhury. 2017. "The Growing Gap in Life Expectancy by Income: Recent Evidence and Implications for the Social Security Retirement Age (CRS Report R44846)". Washington, D.C.: Congressional Research Service.
- Jamison, Dean T. 2009. "Cost Effectiveness Analysis: Concepts and Applications." In R. Detels, J. McEwen, R. Beaglehole, M. A. Lansang, and M. Gulliford (Eds.), *Oxford Textbook of Public Health, The Methods of Public Health* (5th ed.): 767–782. New York: Oxford University Press.
- Jamison, Dean T., Ala Alwan, Charles N. Mock, Rachel Nugent, David Watkins, and Olusoji Adeyi et al. 2018. "Universal Health Coverage and Intersectoral Action for Health." In *Improving Health and Reducing Poverty: Disease Control Priorities* (3rd ed.): (Vol. 9): 1–21. Washington, D.C.: The World Bank.
- Jamison, Dean T., Lawrence H. Summers, George Alleyne, Kenneth J. Arrow, Seth Berkley, and Agnes Binagwaho et al. 2013. "Global Health 2035: A World Converging within a Generation." *The Lancet*, 382(9908): 1898–1955.
- Jan, Stephen, Tracey-Lea Laba, Beverley M. Essue, Adrian Gheorghie, and Janani Muhunthan et al. 2018. "Action to Address the Household Economic Burden of Non-Communicable Diseases." *The Lancet*, 391(10134): 2047–2058.
- King, Gary, Emmanuela Gakidou, Kosuke Imai, Jason Lakin, Ryan T. Moore, and Clayton Nall et al. 2009. "Public Policy for the Poor? A Randomized Assessment of the Mexican Universal Health Insurance Programme." *Lancet*, 373(9673): 1447–1454.
- Laibson, David. 1997. "Golden Eggs and Hyperbolic Discounting." *Quarterly Journal of Economics*, 112(2): 443–477.



- Lanjouw, Peter, Pradhan Menno, Saadah Fadia, Sayed Haneen, and Sparrow Robert. 2002. "Poverty, Education and Health in Indonesia: Who Benefits from Public Spending?" In *Education and Health Expenditures, and Development: The Cases of Indonesia and Peru*: 17–78. Paris: OECD Development Centre.
- McClellan, Mark and Jonathan Skinner. 2006. "The Incidence of Medicare." *Journal of Public Economics*, 90(1–2): 257–276.
- Neelsen, Sven and Owen O'Donnell. 2017. "Progressive Universalism? The Impact of Targeted Coverage on Health Care Access and Expenditures in Peru." *Health Economics*, 26(12): e179–e203.
- Nyman, John A. 1999. "The Value of Health Insurance." *Journal of Health Economics*, 18(2): 141–152.
- O'Donoghue, Ted and Jason Somerville. 2018. "Modeling Risk Aversion in Economics." *Journal of Economic Perspectives*, 32(2): 91–114.
- Phelps, Charles E., Darius N. Lakdawalla, Anirban Basu, Michael F. Drummond, Adrian Towse, and Patricia M. Danzon. 2018. "Approaches to Aggregation and Decision Making – A Health Economics Approach: An ISPOR Special Task Force Report [5]." *Value in Health*, 21(2): 146–154.
- Prada, Sergio I., Victoria E. Soto, Tatiana S. Andia, Claudia P. Vaca, Álvaro A. Morales, Sergio R. Márquez, and Alejandro Gaviria. 2018. "Higher Pharmaceutical Public Expenditure after Direct Price Control: Improved Access or Induced Demand? The Colombian Case." *Cost Effectiveness and Resource Allocation*, 16(1): 8.
- Rao, Neethi. 2017. "Realising Universal Health Coverage in Karnataka". *The Wire* (October 25th). <https://thewire.in/health/realising-universal-health-coverage-karnataka>.
- Robinson, Lisa A., James K. Hammitt, Dean Jamison, and Damian Walker. 2019a. "Conducting Benefit-Cost Analysis in Low- and Middle-Income Countries: Introduction to the Special Issue." *Journal of Benefit-Cost Analysis*, 9(4): forthcoming.
- Robinson, Lisa A., James K. Hammitt, and Lucy O'Keeffe. 2019b. "Valuing Mortality Risk Reductions in Global Benefit-Cost Analysis." *Journal of Benefit-Cost Analysis*, 9(4): forthcoming.
- Robinson, Lisa A. and James K. Hammitt. 2018a. "Valuing Nonfatal Health Risk Reductions in Global Benefit-Cost Analysis." Working Paper No. 2, Guidelines for Benefit-Cost Analysis Project. Harvard University.
- Robinson, Lisa A. and James K. Hammitt. with supplement by Matthew Adler, M. D. March 2018b. "Assessing the Distribution of Impacts in Global Benefit-Cost Analysis". Working Paper No. 3, Guidelines for Benefit-Cost Analysis Project, Harvard University.
- Rosen, Daniel, Kalipso Chalkidou, and Janeen Madan Keller. 2017. "An Initial Estimation of the Size of Health Commodity Markets in Low- and Middle-Income Countries." Center for Global Development (December).
- Samuelson, Paul A. 1937. "A Note on Measurement of Utility." *Review of Economic Studies*, 4(2): 155–161.
- Skinner, Jonathan. 1988. "Risky Income, Life Cycle Consumption, and Precautionary Savings." *Journal of Monetary Economics*, 22(2): 237–255.
- Skinner, Jonathan S. and Kevin G. Volpp. 2017. "Replacing the Affordable Care Act: Lessons from Behavioral Economics." *JAMA*, 317(19): 1951–1952.
- Smith, Peter C. 2013. "Incorporating Financial Protection into Decision Rules for Publicly Financed Healthcare Treatments." *Health Economics*, 22(2): 180–193.
- Tangcharoensathien, Viroj and Woranan Witthayapipopsakul. 2018. "Health systems Development in Thailand: A Solid Platform for Successful Implementation of Universal Health Coverage." *The Lancet*, 391(10126): 1205–1222.

- Udwadia, Zarir F., Lancelot M. Pinto, and Mukund W. Uplekar. 2010. "Tuberculosis Management by Private Practitioners in Mumbai, India: Has Anything Changed in Two Decades?" *PloS One*, 5(8): e12023.
- van Doorslaer, Eddie, Owen O'Donnell, Ravi P. Rannan-Eliya, Aparnaa Somanathan, and Shiva Raj Adhikari et al. 2006. "Effect of Payments for Health Care on Poverty Estimates in 11 Countries in Asia: An Analysis of Household Survey Data." *Lancet*, 368(9544): 1357–1364.
- van Doorslaer, Eddie, Owen O'Donnell, Ravindra P. Rannan, Eliya Aparnaa, and Somanathan Shiva et al. 2007. "Catastrophic Payments for Health Care in Asia." *Health Economics*, 16(11): 1159–1184.
- Verguet, Stéphane, Ramanan Laxminarayan, and Dean T. Jamison. 2015. "Universal Public Finance of Tuberculosis Treatment in India: An Extended Cost-Effectiveness Analysis." *Health Economics*, 24(3): 318–332.
- Wagstaff, Adam. 2010. "Measuring Financial Protection in Health." In Peter C. Smith, Elias Mossialos, and Irene E. Papanicolas (Eds.), *Performance Measurement for Health System Improvement*. Cambridge, England: Cambridge University Press.
- Wagstaff, Adam and Eddie van Doorslaer. 2003. "Catastrophe & Impoverishment in Paying for Health Care: Its Applications to Vietnam 1993–1998." *Health Economics*, 12(11): 921–934.
- Wagstaff, Adam and Magnus Lindelow. 2008. "Can Insurance Increase Financial Risk? The Curious Case of Health Insurance in China." *Journal of Health Economics*, 27(4): 990–1005.
- WHO (World Health Organization). 2010. *World Health Report 2010: Health Systems Financing, the Path to Universal Coverage*.
- Xu, Ke, David B. Evans, Kei Kawabata, Riadh Zeramdini, Jan Klavus, and Christopher J. L. Murray. 2003. "Household Catastrophic Health Expenditure: A Multi-Country Analysis." *Lancet*, 362(9378): 111–117.
- Xu, Ke, David B. Evans, Guido Carrin, Ana Mylena, Philip Musgrove Aguilar-Rivera, and Timothy Evans. 2007. "Protecting Households from Catastrophic Health Spending." *Health Affairs*, 26(4): 972–983.
- Zeckhauser, Richard. 1970. "Medical Insurance: A Case Study of the Tradeoff between Risk Spreading and Appropriate Incentives." *Journal of Economic Theory*, 2(1): 10–26.