

THE JOURNAL OF HELLENIC STUDIES

VOLUME LXXVII (Part 2) 1957

This Volume is published with assistance from the Trustees of the Nuffield Foundation.

CONTENTS

PAGE		
	HENDERSON, M. I.	GILBERT MURRAY.
177.	ANDREWES, A., and LEWIS, D. M.	NOTE ON THE PEACE OF NIKIAS.
181.	BLUCK, R. S.	FALSE STATEMENT IN THE <i>SOPHIST</i> .
187.	BOOTH, N.	ZENO'S PARADOXES.
202.	CHADWICK, J.	MINOAN LINEAR B: A REPLY.
205.	DALE, A. M.	AN INTERPRETATION OF AR. <i>VESP.</i> 136-210 AND ITS CON- SEQUENCES FOR THE STAGE OF ARISTOPHANES.
212.	DESBOROUGH, V. R. d'A.	A GROUP OF VASES FROM AMATHUS.
220.	DIAMANTOPOULOS, A.	THE DANAID TETRALOGY OF AESCHYLUS.
230.	DOVER, K. J.	THE POLITICAL ASPECT OF AESCHYLUS'S <i>EUMENIDES</i> .
238.	FRENCH, A.	SOLON AND THE MEGARIAN QUESTION.
247.	GARTON, C.	CHARACTERISATION IN GREEK TRAGEDY.
255.	GOMME, A. W.	INTERPRETATIONS OF SOME POEMS OF ALKAIOS AND SAPPHO.
267.	HEALY, J. F.	NOTES ON THE MONETARY UNION BETWEEN MYTILENE AND PHOKAIA.
269.	KARAGEORGHIS, V.	THE MYCENAEAN 'WINDOW-CRATER' IN THE BRITISH MUSEUM.
272.	LEAHY, D. M.	THE SPARTAN EMBASSY TO LYGDAMIS.
276.	PARKE, H. W., and BOARDMAN, J.	THE STRUGGLE FOR THE TRIPOD AND THE FIRST SACRED WAR.
283.	VERMEULE, C. C.	HERAKLES CROWNING HIMSELF: NEW GREEK STATUARY TYPES AND THEIR PLACE IN HELLEN- ISTIC AND ROMAN ART.
300.	WRIGHT, G. R. H.	CYRENE: A SURVEY OF CERTAIN ROCK-CUT FEATURES TO THE SOUTH OF THE SANCTUARY OF APOLLO.
	NOTES—	
311.	HAMMOND, N. G. L.	THE BATTLE OF SALAMIS—A CORRECTION.
311.	HAYNES, D. E. L.	PHILO OF BYZANTIUM AND THE COLOSSUS OF RHODES.
312.	COLEIRO, E.	A GREEK INSCRIPTION FOUND IN MALTA.
313.	MITFORD, T. B., and NIKOLAOU, K.	AN INSCRIPTION FROM KARPASIA IN CYPRUS.
314.	URE, A. D.	A BOEOTIAN KRATER IN TRINITY COLLEGE, CAMBRIDGE.
315.	WILLIAMS, R. T.	NOTES ON SOME ATTIC BLACK-FIGURE VASES WITH SHIP REPRESENTATIONS.
317.	NOTICES OF BOOKS	
371.	BOOKS RECEIVED	
373.	INDEXES	

THE SOCIETY FOR THE PROMOTION OF HELLENIC STUDIES
50 BEDFORD SQUARE, LONDON, W.C.1.
PUBLISHED BY THE COUNCIL OF THE SOCIETY

Price £3 net

1957

All rights reserved

THE SOCIETY FOR THE PROMOTION OF HELLENIC STUDIES

OFFICERS AND COUNCIL FOR 1956-1957.

President

PROF. A. W. GOMME, F.B.A.

Vice-Presidents

The following *ex*-Presidents:

SIR RICHARD LIVINGSTONE, D.Litt., LL.D., 1938-41
PROF. E. R. DODDS, D.Litt., F.B.A., 1948-50
PROF. T. B. L. WEBSTER, F.S.A., 1951-53
PROF. DOROTHY TARRANT, 1954-56

and

PROF. SIR FRANK ADCOCK, D.Litt., F.B.A.	SIR JOHN FORSDYKE, K.C.B.
PROF. BERNARD ASHMOLE, C.B.E., F.B.A.	PROF. D. S. ROBERTSON, F.B.A.
PROF. N. H. BAYNES, D.D., F.B.A.	E. S. G. ROBINSON, C.B.E., F.B.A.
SIR JOHN BEAZLEY, Litt.D., F.B.A.	SIR JOHN SHEPPARD, M.B.E., Litt.D.
SIR HAROLD IDRIS BELL, C.B., O.B.E., F.B.A.	

Council

Elected 1955.
PROF. A. H. ARMSTRONG
PROF. H. C. BALDRY
J. M. COOK
R. M. COOK
O. A. W. DILKE
J. G. GRIFFITH
I. R. D. MATHEWSON
PROF. L. J. D. RICHARDSON
PROF. C. M. ROBERTSON

Elected 1956.
PROF. K. J. DOVER
DR. A. J. GOSSAGE
G. T. GRIFFITH
N. G. L. HAMMOND
G. T. W. HOOKER
G. K. JENKINS
H. LLOYD-JONES
F. H. SANDBACH
MRS. A. D. URE
PROF. H. D. WESTLAKE

Elected 1957.
PROF. D. J. ALLAN, F.B.A.
A. R. BURN
P. E. CORBETT
D. J. FURLEY
D. E. L. HAYNES
C. J. HERINGTON
MISS L. H. JEFFERY
PROF. H. D. F. KITTO, F.B.A.
PROF. P. T. STEVENS
A. G. WOODHEAD

Executive Committee

THE PRESIDENT
THE HON. TREASURER
THE HON. SECRETARY
THE EDITORS

PROF. A. ANDREWES
PROF. DOROTHY TARRANT
A. G. WOODHEAD

} Elected
by the
Council.

Acting Editorial Committee

PROF. A. W. GOMME (Editor)
J. P. C. KENT (Asst. Editor)
PROF. P. T. STEVENS (Review Editor)
M. S. F. HOOD, *ex officio* as Director of the
British School of Athens

PROF. H. D. F. KITTO
PROF. C. M. ROBERTSON
PROF. J. TATE
A. G. WOODHEAD

Trustees

PROF. C. MARTIN ROBERTSON | PROF. BERNARD ASHMOLE | PROF. R. J. H. JENKINS

Hon. Treasurer

SIR T. ST. QUINTIN HILL, K.C.M.G.

Hon. Secretary

SIR JOHN FORSDYKE, K.C.B.

Hon. Secretary for U.S.A.

PROF. STERLING DOW

Secretary

MRS. M. WINNINGTON-INGRAM

Hon. Auditors

MESSRS. DAVEY, BRIDGWATER & Co.,
91-3 BISHOPSGATE, LONDON, E.C.2.

Bankers

MESSRS. COUTTS & Co.,
15 LOMBARD STREET, E.C.3.

Officers of the Joint Library

Hon. Librarian

PROF. E. G. TURNER, F.B.A.

Librarian

MISS J. E. SOUTHAN

Keeper of Lantern Slides

MRS. M. J. THORNTON

Contributions to the Journal should be sent to Prof. A. W. Gomme, Long Crendon, Aylesbury, Bucks.
Books intended for review should be addressed to The Librarian, 50 Bedford Square, W.C.1.

THE BRITISH ACADEMY

CROMER GREEK PRIZE

WITH the view of maintaining and encouraging the study of Greek, particularly among the young, in the national interest, the late Lord Cromer founded a Prize, to be administered by the British Academy, for the best Essay on any subject connected with the language, history, art, literature, or philosophy of Ancient Greece.

The Prize, which is ordinarily a sum of £150, is awarded every second year in May, under the following Rules:—

1. Competition is open to all British subjects and subjects of Eire of either sex who will be under thirty-five years of age on 31 December preceding the award.

2. Any such person desirous of competing must send in to the Secretary of the British Academy on or before 1 June of the year preceding the award the title of the subject proposed by him or her. The Academy may approve (with or without modification) or disapprove the subject; their decision will be intimated to the competitor as soon as possible.

3. Preference will be given, in approval of subjects proposed, to those which deal with aspects of the Greek genius and civilization of large and permanent significance over those which are of a minute or highly technical character.

4. Any Essay which has already received or is in competition for another prize of the same nature will be inadmissible. A candidate to whom the Prize has been awarded will not be eligible to compete for it again. But an Essay which has not received the Prize may be submitted again (with or without alteration) in a future year so long as the writer remains eligible under Rule 1.

5. Essays of which the subject has been approved must be sent in to the Secretary of the Academy on or before 31 December. They must be typed or printed and should have a note attached stating the main sources of information used.

6. It is recommended that the Essays should not exceed 20,000 words, exclusive of notes. Notes should not run to an excessive length.

Communications should be addressed to 'The Secretary of the British Academy, Burlington Gardens, London, W.1'.

The next award will be in 1958.



Documents in Mycenaean Greek

MICHAEL VENTRIS & JOHN CHADWICK

The book about the late Michael Ventris's decipherment of the Mycenaean script known as Linear B. 'An account of the discovery that in imaginative sobriety matches the brilliance of the decipherment.' THE TIMES LITERARY SUPPLEMENT. 84s. net

A Greek-English Lexicon of the New Testament

W. F. ARNDT & F. W. GINGRICH

A translation, much revised and extended, of W. Bauer's revision of E. Preuschen's Greek-German lexicon. 'A great enterprise, generously conceived and carried out with great skill and competence.' THE TIMES LITERARY SUPPLEMENT. £5 5s. net

The Complete Greek Tragedies, V

EDITED BY D. GRENE & R. LATTIMORE

The fifth volume in this series of translations of Greek tragedies contains four plays by Aeschylus: *The Suppliant Maidens* and *The Persians* translated by S. G. Bernardete, and *Seven Against Thebes* and *Prometheus Bound* translated by David Grene. UNIVERSITY OF CHICAGO PRESS. 26s. net

Poetic, Scientific & other Forms of Discourse

JOSHUA WHATMOUGH

Professor Whatmough adopts a highly personal method to analyse Greek and Latin literature, the *Chanson de Roland*, and Byron. Sather Classical Lectures, volume 29. UNIVERSITY OF CALIFORNIA PRESS. 37s. 6d. net

CAMBRIDGE UNIVERSITY PRESS

BENTLEY HOUSE, 200 EUSTON ROAD, LONDON, N.W.1

OXFORD MONOGRAPHS ON CLASSICAL ARCHAEOLOGY

THE AMASIS PAINTER

SEMNI KAROUZOU

... one of the most attractive of Greek vase painters. . . . He is Schongauer rather than Grünewald and is all the more delightful for that, especially when he is interpreted by someone who loves him and Mme. Karouzou has loved him for more than a quarter of a century. She writes with peculiar authority, as a great and intelligent Athenian lady of the sixth century B.C. might speak when her husband brought her a vase by the Amasis painter . . . 'TIMES LITERARY SUPPLEMENT

Illustrated 75s. net

* * *

AESCHYLUS: AGAMEMNON

Edited by the late J. D. DENNISTON *and* DENYS PAGE

'... will be welcomed most warmly for use in sixth forms and by university students. . . . The learning of the commentary is truly impressive . . . an excellent edition which will be indispensable to all serious readers of the play in future.' TIMES EDUCATIONAL SUPPLEMENT

21s. net

HORACE

EDUARD FRAENKEL

'A book composed mainly of interpretations of a large part of Horace's writings, which attempts to outline the history of his work from the earliest epodes and satires to the maturest epistles and odes. An introductory chapter provides a commentary on Suetonius' *Life of Horace*.'

63s. net FORTHCOMING

A HISTORICAL COMMENTARY ON POLYBIUS

VOLUME I

Commentary on Books I-VI

F. W. WALBANK

'... Walbank has approached his subject in the spirit of today. We, for the most part, as Walbank justly points out, read Polybius "as the main source for much Hellenistic history, as the historian of the Punic Wars, and, above all, as the first man who really came to grips with the problem of the rise of Rome to world empire." . . . Every serious student of this period will need this volume constantly at his side.' TIMES EDUCATIONAL SUPPLEMENT

84s. net

A HISTORICAL COMMENTARY ON THUCYDIDES

Volumes II and III: THE TEN YEARS WAR, Books II-V 24

A. W. GOMME

'His commentary is so clearly and plainly expressed that it will not only be of supreme value to the specialist but will be found fascinating by the amateur. It is the crowning tribute of modern scholarship to the greatest of all historians.'

GLASGOW HERALD

84s. net

THE LAW AND LEGAL THEORY OF THE GREEKS

J. WALTER JONES

'Mr. Jones has earlier shown how well he can present legal subjects to the layman without either writing down or over-simplifying, and this new venture reveals the same easy style, the same common sense, and an emphasis on the relevant and the significant at the expense of the hairsplitting exception and the casuistical twist.'

CAMBRIDGE REVIEW

42s. net

OXFORD UNIVERSITY PRESS

INTERNATIONAL UNIVERSITY BOOKSELLERS LIMITED



issue regularly

CATALOGUES ON CLASSICAL ANTIQUITY

(now available Catalogue No. 88) and other subjects within
the field of the Humanities, as well as frequent **LISTS OF
RECENT AND FORTHCOMING PUBLICATIONS.**

They also welcome offers of small or large collections
of books for sale.

39 STORE STREET · LONDON · W·C·1 · Tel. Museum 8959

The Loeb Classical Library

Edited by

† T. E. PAGE, C.H., LITT.D. † W. H. D. ROUSE, LITT.D.

† E. CAPPS, PH.D., LL.D.

L. A. POST, M.A. E. H. WARMINGTON, M.A., F.R.HIST.SOC.

Founded by JAMES LOEB

Each volume Foolscap 8vo, 400–700 pages. Clear type. Cloth, 15s. net

A series of Greek and Latin Texts, with English Translations on the opposite page. The series is to contain all that is best in Greek and Latin Literature, from the time of Homer to the end of the Western Empire.

'We shall never be independent of our Loeb.'—*Times Literary Supplement.*

NEW VOLUMES, 1957–58

LATIN

309 CICERO. Pro Sestio, In Vatinius.

447 CICERO. Pro Caelio, De Provinciis Consularibus, Pro Balbo.

Translated by the late J. H. Freese, St. John's College, Cambridge, and R. Gardner, Emmanuel College, Cambridge.

GREEK

421 CALLIMACHUS. Fragments. Translated and annotated by C. A. Trypanis, Exeter College, Oxford.

409 DIODORUS SICULUS. 12 volumes, vol. XI, Fragments of Books XXI–XXXII. Translated by Francis R. Walton, State University of Florida.

406 PLUTARCH. Moralia. 15 volumes, vol. XII. Translated by H. Cherniss and W. C. Helmbold.

William Heinemann, Ltd., Windmill Press, Kingswood, Tadworth, Surrey

HARVARD UNIVERSITY PRESS, Cambridge, Mass., U.S.A.

SOCIETY FOR THE PROMOTION OF
HELLENIC STUDIES

Supplementary Paper No. 7

**Perspective in Ancient Drawing
and Painting**

JOHN WHITE, Ph.D.

A survey of the principal stages in the development of spatial realism from its first appearance in the Greek vase painters to its last stage in the wall paintings of Pompeii. Particular attention is paid to certain controversial problems; and the practical problems of design, the nature of the theoretical systems and of their impact upon empirical methods, are discussed within a strictly historical framework.

87 pages with 12 plates. Demy 8vo—15/6 (postage 1/- extra)

Supplementary Paper No. 8

**The Greeks and their Eastern
Neighbours**

Studies in the relations between Greece and the countries of the Near East
in the 8th and 7th centuries B.C.

by T. J. DUNBABIN. Foreword by SIR JOHN BEAZLEY

Edited by John Boardman

96 pages with 16 plates. Demy 8vo—16/- (postage 1/- extra)

These Supplementary Papers are distributed by
INTERNATIONAL UNIVERSITY BOOKSELLERS LTD.
39 Store Street, London, W.C.1

**Joint Library of the
Hellenic and Roman Societies**

LANTERN SLIDES

More than forty sets of slides (together with notes) on a wide range of topics of general interest to Classical students in schools are available for hire to all members of either of these Societies at a charge of 10s. (plus postage).

Recent additions include:

- Greek Cities (R. E. Wycherley).
- Life in Roman Gaul (O. Brogan).
- Greek Gods and Heroes (P. E. Corbett).
- Roman Furniture (J. Liversidge).
- Transport in the Ancient World
(A. G. Woodhead).
- Greek Sculpture
(T. B. L. Webster and P. E. Corbett).
- Greek Vases (Slides revised by P. E. Corbett).

Roman Britain and the Roman Wall have recently been revised by S. S. Frere.

Two sets of 2" × 2" colour slides of Greek sites and landscape are also available.

A film strip of Greek Gods and Heroes (P. E. Corbett) may be hired at a cost of 10s. Copies may also be bought for 17s. 6d., inclusive of notes.

The annual subscription to each Society is £2. **SCHOOLS ARE ELIGIBLE FOR MEMBERSHIP.** For particulars apply to the Secretary of either Society at 50 Bedford Square, W.C.1.

BOOKS
and
PERIODICALS

on ARCHAEOLOGY
and the FINE ARTS

*We invite offers
of individual items
or large or small
collections*

**C. G. ROSENBERG
& CO. LTD.**

LIBRARY AGENTS

92 Great Russell Street
London, W.C.1

**BOOKS ON GREEK ART,
ARCHAEOLOGY, HISTORY, LITERATURE,
PHILOSOPHY, ETC., ETC.**

We gladly offer for large or small collections of books on Classical Subjects or for individual items, e.g., Beazley and Ashmole, Greek Sculpture and Painting; Cook, Zeus; Hoppin, Handbooks of Vases; Evans, Palace of Minos, Scripta Minoa; Ritter and Preller, 9th–10th editions; Pausanias, ed. Frazer; Leaf's Iliad, 2nd edition; B.M. Catalogues of Greek Coins; Ast, Lexicon Platonicum; Epicurus, ed. Usener or Bailey; Farnell's Pindar; Ebeling, Lexicon; Corpus Medicorum Graecorum; Suidas, ed. Adler; works of J. D. Beazley, Bouché-Leclercq, Wilamowitz, etc., etc.

W. HEFFER & SONS, Ltd.

**PETTY CURY
CAMBRIDGE**

Telegrams: 'Heffer, Cambridge'

Telephone: Cambridge 58351

HELLENIC TRAVELLERS CLUB

★ 1958 Hellenic Cruises ★

Under the patronage of the Vice-Chancellors of Oxford, Cambridge, Bristol, Aberdeen, Edinburgh, Glasgow, Leeds, Liverpool and Aberystwyth (Wales) Universities

Cruise 10

YUGOSLAVIA, GREECE & TURKEY

1st April to 18th April, 1958

VENICE, DUBROVNIK, CORFU, PALAEOKASTRITSA, CORINTH, MYCENAE, TIRYNS, EPIDAUROS, DELOS, MYKONOS, RHODES, LINDOS, EPHESUS, SELJUK, IZMIR, PERGAMUM, ISTANBUL, LESVOS (MYTILINI), ATHENS, DAPHNI, SOUNION, DELPHI, LEPANTO, VENICE.

Cruise 11

GREECE & TURKEY

19th August to 3rd September, 1958

VENICE, LEPANTO, DELPHI, MONEMVASIA, KYTHIRA, CRETE, KNOSSOS, GORTYNA, PHAESTOS, RHODES, LINDOS, KOS, HALICARNASSUS, MILETUS, SAMOS, DELOS, TINOS, SYROS, ATHENS, DAPHNI, SOUNION, EPIDAUROS, TIRYNS, MYCENAE, CORINTH, OLYMPIA, VENICE.

Cruise 12

GREECE & TURKEY

1st September to 16th September, 1958

VENICE, OLYMPIA, PATRAS, DELOS, ANDROS, THASSOS, SAMOTHRAKI, THE BOSPHORUS, ISTANBUL, TROY, MILETUS, SAMOS, LEROS, PATMOS, ATHENS, DAPHNI, SOUNION, EPIDAUROS, TIRYNS, MYCENAE, CORINTH, DELPHI, VENICE.

Each Cruise will be accompanied by five Classical Scholars who will give Lectures on Board and at the various Sites visited.

Guest Lecturers who have accompanied our previous cruises include:

PROF. A. ANDREWES, M.B.E., M.A., Wykeham Professor of Ancient History, University of Oxford. SIR MAURICE BOWRA, O.Leg.D'H., Litt.D., D.Litt., M.A., F.B.A., Warden of Wadham College and former Vice-Chancellor of Oxford University. SIR GERALD KELLY, K.C.V.O., P.P.R.A. Mr. F. KINCHIN SMITH, M.A., Head of the Department of Classics, University of London Institute of Education. PROF. H. D. F. KITTO, M.A., F.B.A., Professor of Greek, University of Bristol. SIR COMPTON MACKENZIE, O.B.E., F.R.S.L., LL.D. THE REV. GERVASE MATHEW, M.A., F.S.A., Lecturer in Byzantine Studies, Balliol College, University of Oxford. DR. C. T. SELTMAN, Litt.D., Fellow of Queens' College, Cambridge. SIR JOHN SHEPPARD, M.B.E., M.A., Litt.D., LL.D., Senior Fellow of King's College, Cambridge. PROF. W. B. STANFORD, M.A., Litt.D., Regius Professor of Greek, University of Dublin. PROF. R. SYME, M.A., F.B.A., Camden Professor of Ancient History, University of Oxford. SIR MORTIMER WHEELER, C.I.E., M.C., M.A., D.Litt., F.B.A., F.S.A., Professor of Archaeology of the Roman Provinces in the University of London. SIR JOHN WOLFENDEN, C.B.E., M.A., Vice-Chancellor of University of Reading.

PRICES FROM 85 GNS. TO 300 GNS.

(INCLUDING TRAVEL LONDON—VENICE AND RETURN)
(STUDENTS—DORMITORY ACCOMMODATION—72 GNS.)

★ *Three similar Hellenic Cruises will be operated in the Spring and Summer of 1959* ★

W F & R K SWAN LTD

260 (K2) Tottenham Court Road, London W.1

Telephone: Museum 8070 (12 lines)

CAMBRIDGE EPIGRAPHICAL COLLECTION

The attention of members is drawn to the collection of squeezes of Greek inscriptions in the Museum of Classical Archaeology at Cambridge.

This collection already contains about 2,000 squeezes. These are drawn mainly from Attica and Asia Minor; but additions are constantly being made from all parts of the Greek world.

Members of the Society who may wish to consult this collection are cordially invited to do so; and in special cases arrangements can be made for sending out a small number of squeezes on loan by post. The Museum authorities would also receive most gratefully any squeezes in private possession which their owners might wish to make available for general use.

Enquiries should be addressed to
THE LIBRARIAN, MUSEUM OF CLASSICAL ARCHAEOLOGY
LITTLE ST. MARY'S LANE, CAMBRIDGE

SUPPLEMENTUM EPIGRAPHICUM GRAECUM

S.E.G. is published annually as a review of Greek Epigraphy. As far as possible, it gives references to work done during each year on or relating to Greek inscriptions, and reprints new or emended texts. This is a service which, it is hoped, will be of value not only to epigraphic specialists but also to classical scholars in general.

To assist him in making the annual *Supplementum* as complete as possible, the editor would be grateful if scholars who publish studies on Greek Epigraphy, or substantially using epigraphic material, would send him a notice (or if possible a reprint) of their work. Their co-operation in this way would be greatly appreciated.

All communications should be addressed to the Secretary
A. G. WOODHEAD, CORPUS CHRISTI COLLEGE, CAMBRIDGE, ENGLAND

UNIVERSITY OF LONDON

INSTITUTE OF CLASSICAL STUDIES

50 BEDFORD SQUARE, W.C.1

The objects of the Institute are to promote the advancement of the study of Classics; to provide opportunities for contacts between scholars in the Classical field, both within the University and from other centres of learning at home and abroad; and to arrange facilities for advanced study and research and for the training of postgraduate students in Classics and cognate subjects.

PUBLICATIONS

Bulletin (Annual) No. 4 - 1957. Price 10s. (Previous numbers available).

Bulletin - Supplement No. 2, *The Knossos Tablets*, A revised Transliteration by Emmett L. Bennett, John Chadwick and Michael Ventris (ed.) 1956. Price 15s.

Bulletin - Supplement No. 3, *Mycenaean Civilization, Publications since 1935*, A Bibliography compiled by Brenda E. Moon, 1957. Price 10s.

Bulletin - Supplement No. 4, *Catalogue of the MSS of Ovid's Metamorphoses* by Franco Munari, 1957. Price 10s.

Bulletin - Supplement No. 5, *The Telephus of Euripides* by E. W. Handley and John Rea, 1957. Price 12s. 6d.

Publications distributed by

INTERNATIONAL UNIVERSITY BOOKSELLERS LTD.

39 Store Street, London, W.C.1.

DILLON'S UNIVERSITY BOOKSHOP LIMITED

The new attractive corner shop in the heart of the University precincts

BOOKS FOR ALL STUDENTS AND SCHOLARS

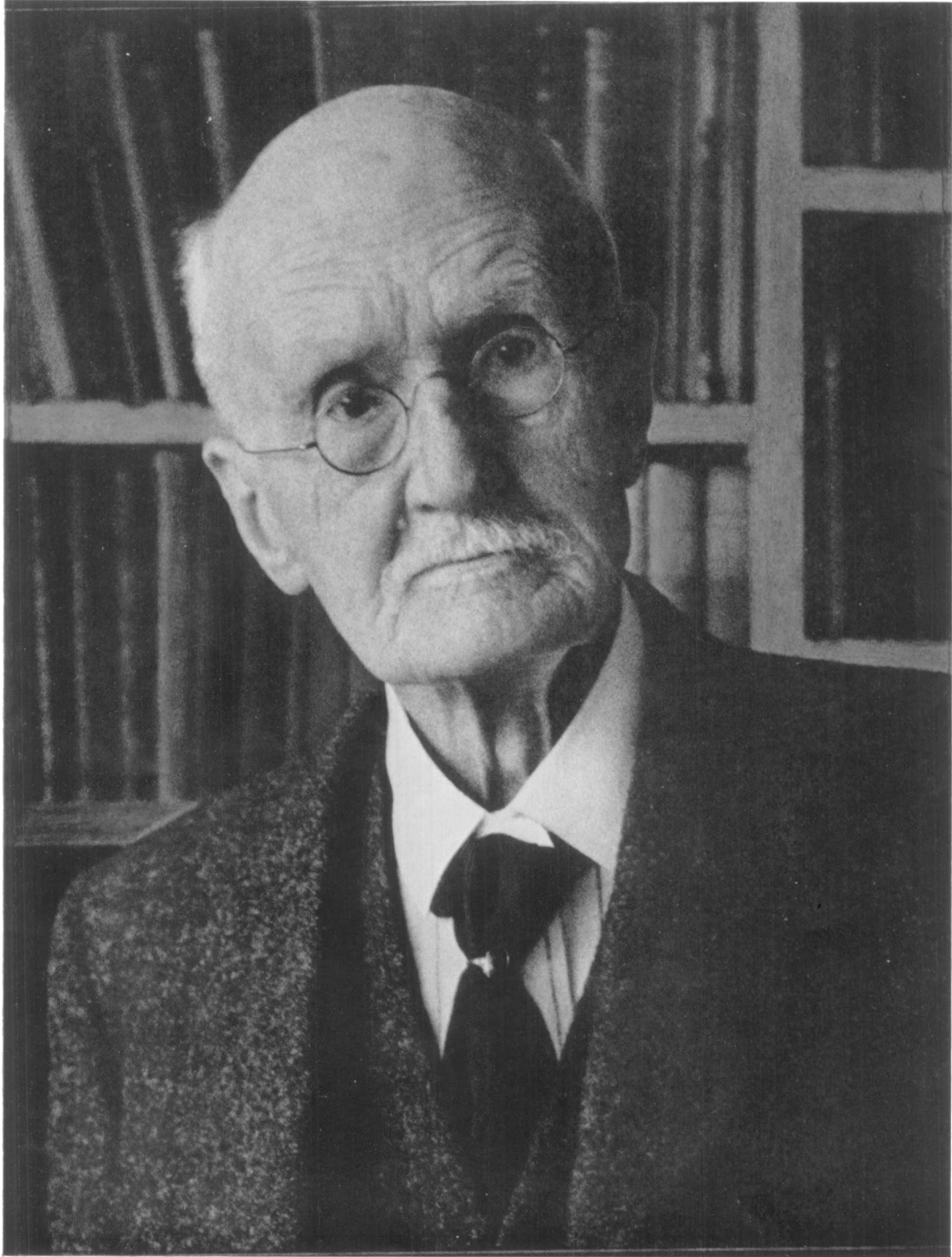
Open on Weekdays 9.0—6.0

Saturdays 9.0—1.0

or post your enquiries and orders to

1 MALET STREET LONDON WC1

MUSEum 2128



GILBERT MURRAY

[Photo by Allan Chappelow, M.A., F.R.S.A.]

THE JOURNAL OF HELLENIC STUDIES

VOLUME LXXVII (Part II)

1957

PUBLISHED BY THE COUNCIL OF THE SOCIETY
FOR THE PROMOTION OF HELLENIC STUDIES

MDCCCCLVII

The Rights of Translation and Reproduction are Reserved

CONTENTS

	PAGE
HENDERSON, M. I. .. Gilbert Murray	xv
ANDREWES, A., AND LEWIS, D. M.	Note on the Peace of Nikias 177
BLUCK, R. S.	False Statement in the <i>Sophist</i> 181
BOOTH, N.	Zeno's Paradoxes 187
CHADWICK, J.	Minoan Linear B: A Reply 202
DALE, A. M.	An Interpretation of AR. <i>Vesp.</i> 136-210 and its consequences for the stage of Aristophanes 205
DESBOROUGH, V. R. d'A.	A Group of Vases From Amathus 212
DIAMANTOPOULOS, A.	The Danaid Tetralogy of Aeschylus 220
DOVER, K. J.	The Political Aspect of Aeschylus's <i>Eumenides</i> 230
FRENCH, A.	Solon and the Megarian Question 238
GARTON, C.	Characterisation in Greek Tragedy 247
GOMME, A. W.	Interpretations of Some Poems of Alkaios and Sappho 255
HEALY, J. F.	Notes on the Monetary Union Between Mytilene and Phokaia 267
KARAGEORGHIS, V.	The Mycenaean 'Window-Crater' in the British Museum 269
LEAHY, D. M.	The Spartan Embassy to Lygdamis 272
PARKE, H. W., AND BOARDMAN, J.	The Struggle for the Tripod and the First Sacred War 276
VERMEULE, C. C.	Herakles Crowning Himself: New Greek Statuary Types and Their Place in Hellenistic and Roman Art 283
WRIGHT, G. R. H.	Cyrene: A Survey of Certain Rock-Cut Features to the South of the Sanctuary of Apollo 300
NOTES—	
HAMMOND, N. G. L.	The Battle of Salamis—A Correction 311
HAYNES, D. E. L.	Philo of Byzantium and the Colossus of Rhodes 311
COLEIRO, E.	A Greek Inscription Found in Malta 312
MITFORD, T. B., AND NIKOLAOU, K.	An Inscription From Karpasia in Cyprus 313
URE, A. D.	A Boeotian Krater in Trinity College, Cambridge 314
WILLIAMS, R. T.	Notes on Some Attic Black-Figure Vases with Ship Representations 315
Notices of Books 317
Books Received 371
Indexes 373

LIST OF NEW MEMBERS

Elected during the session 1956-57

MEMBERS

- Bloch, Herbert, 524 *Pleasant Street, Belmont 78, Massachusetts, U.S.A.*
Brice-Smith, Rollo, *Moors Cottage, Elstead, Godalming, Surrey.*
Brooks, Edward, Jr., 235 *Exeter Place, S. Paul 4, Minnesota, U.S.A.*
Brown, Benjamin W., *P.O. Box 25, Shenandoah, Iowa, U.S.A.*
Cook, Mrs. E. M., 4 *Edgecumbe Road, Bristol 6 (on behalf of Smyrna Museum, Turkey).*
Cornford, Mrs. Jean, 111 *Torquay Road, Paignton, S. Devon.*
Dennis-Jones, Harold, 14 *Tamplin Mews, London, W.9.*
Doyle, Edwin J., *Box 1967, Yale Station, New Haven, Conn., U.S.A.*
Du Maurier, Miss Daphne, *Menabilly, Par, Cornwall.*
Dunbar, Miss Nan V., 10, *Eldon Gardens, Bishopbriggs, Glasgow.*
Evans, Prof. J. D., *Institute of Archaeology, Regent's Park, London, N.W.1.*
Fearcy, N. R., 46, *Girton Road, London, S.E.26.*
Field, Sqn. Ldr. D., *Flat 6, Central Parade, Orpington, Kent.*
Gloag, Miss Daphne, 9 *Barn Crescent, Stanmore, Middx.*
Gunningham, M. R. F., 11 *Fawcett Court, Fawcett Street, London, S.W.10.*
Healy, Dr. John F., *Dept. of Classics, The University, Manchester 13.*
Holbrook, Mrs. M. J., 3505 *S.W. Beaverton Avenue, Portland 1, Oregon, U.S.A.*
Hooker, J. T., 46 *Berry Avenue, Watford, Herts.*
Jenkins, M. G., 12 *Shirley Road, Roath Park, Cardiff, Wales.*
Jones, J. R., *Classics Dept., University of Western Australia, Nedlands, W.A.*
Kirwan, Christopher A., *Charterhouse, Godalming, Surrey.*
Kwapong, A. A., *University College, Achimota, Ghana, W. Africa.*
Lash, Christopher J. A., 29 *Rosary Gardens, S.W.7.*
Lewis, Richard B., 19 *Aldford House, Park Street, W.1.*
Lunn, J. E., 97 *Great Eastern Highway, Rivervale, Western Australia.*
MacDonald, Miss Heather, 36 *Milford Gardens, Edgware, Middx.*
Macnaghten, R. D., 2 *Common Lane, Eton College, Windsor, Berks.*
McKechnie, William P., *Ampleforth College, Yorks.*
Manthos, A. D., 17 *State Street, New York 4, N.Y., U.S.A.*
Mather, Northage J. de V., *Frieldhurst House, Cornholme, Todmorden, Lancs.*
Meehan, Miss Cicely, 101 *Marney Road, S.W.11.*
Meinen, Miss Helen J., 416 *Gardner Building, Toledo 4, Ohio, U.S.A.*
Minney, R. P., *Lawford House, Manningtree, Essex.*
Moyser, Kenneth N., 1 *Lisburn, Lower Warberry Road, Torquay, Devon.*
Neuville, H. Richmond, Jr., *c/o 711 3rd Avenue, New York 17, U.S.A.*
Pentreath, Rev. A. G. G. C., *College House, Cheltenham, Gos.*
Perlzweig, Miss Judith, *American School of Classical Studies, Athens.*
Peters, Miss Joan, *Wyvern Cottage, Milton Street, Westcott, Dorking, Surrey.*
Pope, M. W. M., *Dept. of Classics, University of Capetown.*
Popham, Mervyn R., *c/o the Secretariat, Nicosia, Cyprus.*
Radice, Mrs. Betty, 2 *Hornsey Lane, Highgate, N.6.*
Rayner, Roderick M. S., *c/o Karnak S.A.L., Rue Allenby, Beirut, Lebanon.*
Rich, Miss Audrey N. M., *University College, Cardiff, Wales.*
Robinson, David B., 22 *Lytham Road, Manchester 19.*
Rockwell, Kiffin A., 908 *W. Nevada, Urbana, Illinois, U.S.A.*
Roth, Mrs. Ellen C., 37 *Circus Road Mansions, N.W.8.*
Serling, Irving D., 179 *South Salina Street, Syracuse 4, N.Y., U.S.A.*
Shuttleworth, Henry L. H., *The Red House, Cavendish, near Sudbury, Suffolk.*
Smith, D. Hurndall, *Haileybury and Imperial Service College, Hertford.*
Smith, Wesley D., 15 *University Place, Princeton, New Jersey, U.S.A.*
Stathatos, Mrs. Christine, 51 *Patriarchou Joachim, Athens, Greece.*
Swann, Reginald L., *Teachers' College of Connecticut, 1615 Stanley Street, New Britain, Connecticut, U.S.A.*
Thomas, J. D., *Dept. of Classics, University College of Wales, Aberystwyth.*
Tiltman, Brig. J. H., 1 *Oldfield Crescent, Cheltenham, Gos.*
Warren, Miss Jennifer A. W., *Flat 2, 34 Emperor's Gate, S.W.7.*
Warry, John G., 46 *Madeira Park, Tunbridge Wells, Kent.*
Webster, E. J. Aburn, 57 *High Road, Woodford Green, Essex.*
Wiencke, Matthew I., 39/40 *Bedford Place, W.C.1.*

STUDENT ASSOCIATES

- Aitchison, Miss Jean, *Girton College, Cambridge.*
Amit, M., *University College, London.*
Blumenthal, H. J., *Trinity College, Cambridge.*

STUDENT ASSOCIATES—*contd.*

- Bridge, B. E., *Keble College, Oxford.*
 Briscoe, J., *Corpus Christi College, Oxford.*
 Burford, Alison, *Newnham College, Cambridge.*
 Burton, Peter W., *Keble College, Oxford.*
 Coulson, Michael A., *Trinity College, Oxford.*
 Creer, Miss Ann P., *Somerville College, Oxford.*
 Davidson, I. D., *King's College, Cambridge.*
 Denman, I., *University College, London.*
 Fairhurst, Miss Eileen C., *Bedford College, London.*
 Finelli, N. S., *Christ Church, Oxford.*
 Fisher, J. J., *Hertford College, Oxford.*
 Foss, Miss Diana, *Hughes Hall, Cambridge.*
 Foster, M. A., *University College, London.*
 Goulding, Marrack I., *Magdalen College, Oxford.*
 Green, J. R., *University College, London.*
 Jackson, M. A., *Merton College, Oxford.*
 Jocelyn, Henry D., *St. John's College, Cambridge.*
 Ladlay, Miss Jean, *Birkbeck College, London.*
 Lehrer, J. E., *Balliol College, Oxford.*
 McNelly, Miss Mary, *Somerville College, Oxford.*
 MacPherson, E. C. E., *Jesus College, Oxford.*
 Marshall, N. J., *University College, London.*
 Martineau, W. P., *King's College, Cambridge.*
 Morhange, Elizabeth, *Lady Margaret Hall, Oxford.*
 Morrish, R. E. S., *King's College, Cambridge.*
 Napier, D., *Corpus Christi College, Cambridge.*
 Prior, R., *King's College, Cambridge.*
 Roberts, Christopher W., *Magdalen College, Oxford.*
 Rowlands, Adrian, *Jesus College, Oxford.*
 Simmons, Miss C., *St. Hugh's College, Oxford.*
 Strafford, P. M. O., *King's College, Cambridge.*
 Stubbings, Patrick J., *Hammersmith School of Building and Arts and Crafts, London.*
 Terry, D. W., *King's College, Cambridge.*
 Valaes, Mrs. Helen, *St. Hugh's College, Oxford.*
 Waterhouse, D. B., *King's College, Cambridge.*
 White, E. M. E., *King's College, Cambridge.*
 Wilding, Arthur S., *University College of North Wales, Bangor.*
 Wilson, Christopher, *The Queen's College, Oxford.*
 Winsbury, M. R., *University College, Oxford.*
 Witherill, Miss Linda A., *Institute of Archaeology, London.*
 Wotton, M. L. R., *University of Bristol.*

SUBSCRIBING LIBRARIES

- LONDON, *The Headmistress, South Hampstead High School, N.W.3.*
 WIMBORNE, *Dorset, Canford School.*
 AUSTRIA, *Graz, Institut für Geschichte des Altertums und Altertumskunde, Universität Graz.*
 GERMANY, *Bibliothek der Abtei Ettal, 13b Abtei Ettal/Obb.*
 Göttingen, Abt. für Alte Geschichte des Instituts für Altertumskunde.
 PHILIPPINES, *Manila, Graduate School Library, Ateneo de Manila, P.O. Box 154.*
 TURKEY, *Izmir, Müzesi Müdürlüğü (per Mrs. E. M. Cook).*
 U.S.A., *Missouri, University of Kansas City Library.*
 U.S.A., *New Jersey, Rose Memorial Library, Drew University, Madison.*
 U.S.A., *New York, Brooklyn Public Library.*