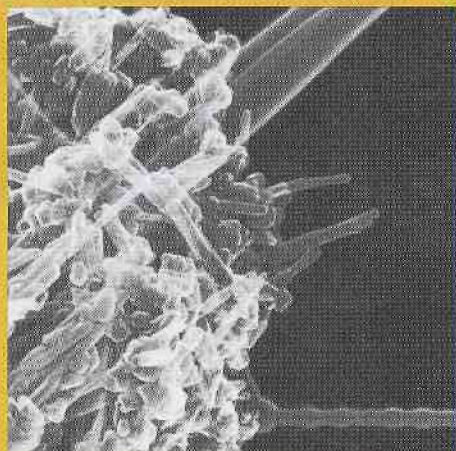
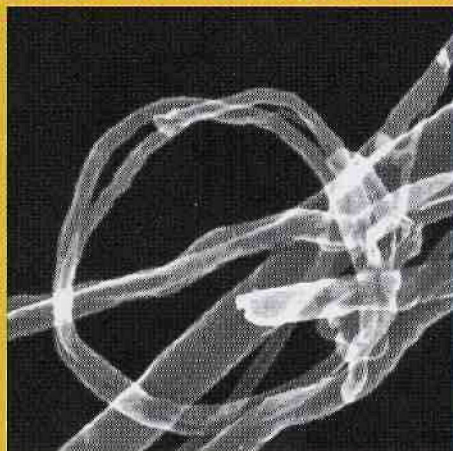


# Have You Seen the Possibilities?



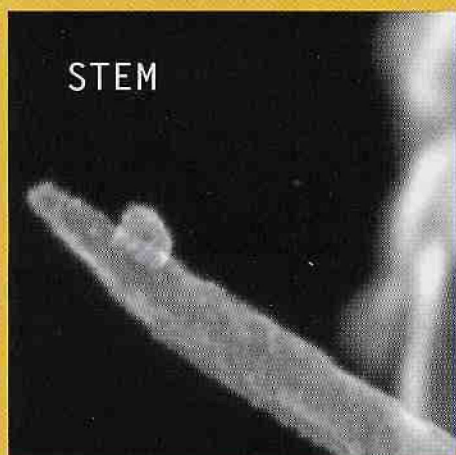
HD-2000 200kV x80.0k SE 300nm



S-4800 30.0kV x200k SE(U) 200nm



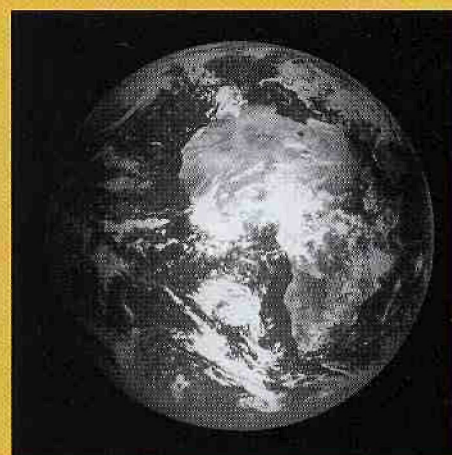
HD-2000 200kV x25.0k ZC 100nm



S-4800 30.0kV x500k SE(U) 100nm



HD-2000 200kV x1300k TE 20.0nm



VIEW FROM SATELLITE 6000km

## We Have.

At Hitachi, we envision a world of endless possibilities.

We understand the impact nanotechnology will have on our planet, and provide products and services with value based on the latest advances in technology. Our wide variety of ELECTRON MICROSCOPES can enable scientists to explore new approaches to solving the world's most challenging problems and empower countless applications to produce stronger, faster, smarter materials that promise to enhance our lives for the better.

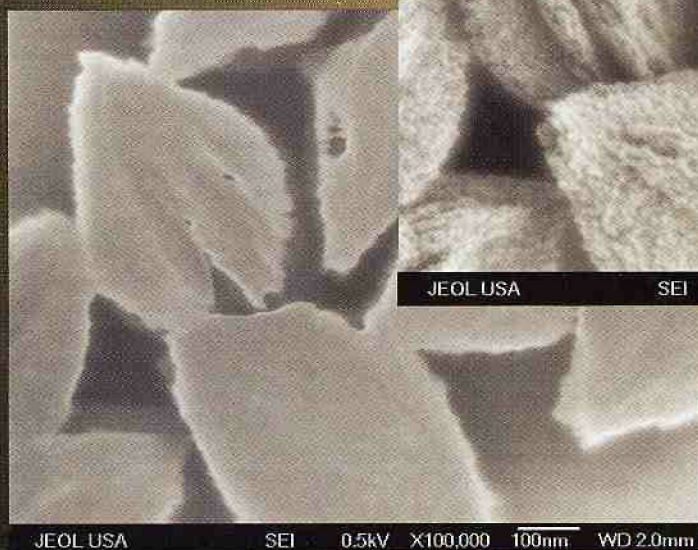
© Hitachi High Technologies America, Inc.  
Electron Microscope Division Headquarters  
5100 Franklin Drive  
Pleasanton, CA 94588  
Sales Phone: (800) 227-8877  
Service Phone: (800) 253-3053  
www.hitachi-hta.com

# HITACHI

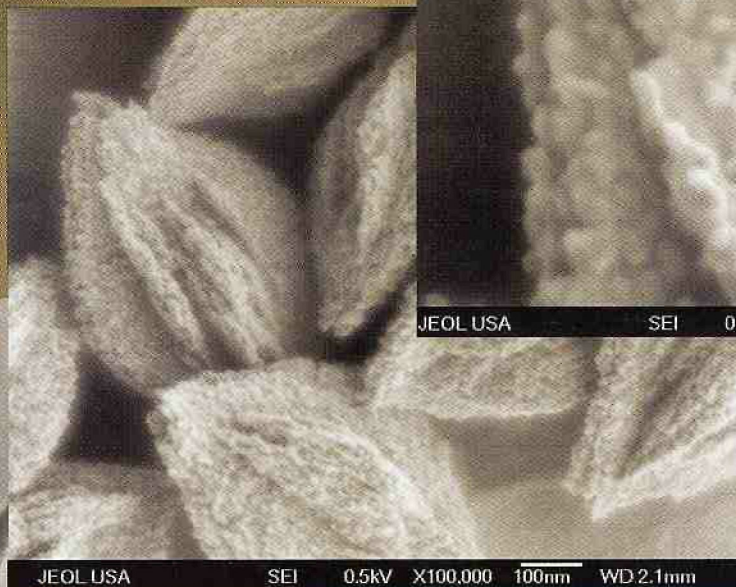
Inspire the Next

# Reality Check

Normal SEM mode.  
Nice edges, but no detail.



Unique GB mode.  
Reality revealed.



GB mode at higher magnification.  
Untouchable resolution.



**Clarity.** Now see surface details as they really are.

**Contrast.** Reduce electron charge and enhance z-contrast.

**Control.** Absolutely the highest resolution at the lowest kV.

Suddenly, it's all clear.

The JSM-7400F field emission scanning electron microscope from JEOL with unique GB mode lets you see the finest surface details. If you're imaging at the extreme nanoscale, call your JEOL sales representative for your own reality check, or visit [www.jeol.com/7400f/](http://www.jeol.com/7400f/).

Another Extreme Imaging  
solution from

# JEOL

978 - 535 - 5900

Extreme Imaging