

Visit Thermo
at M&M 2006
in Chicago,
Booth #1516!



Yes, it is that simple.

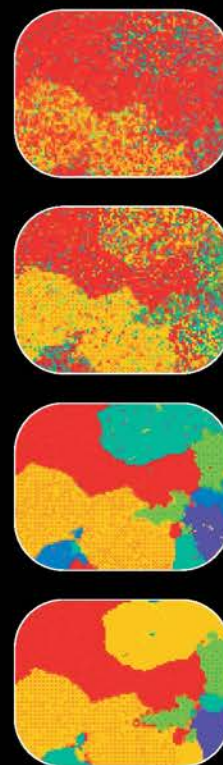
Instant EDS analysis at the press of a button.

With the NORAN System SIX X-ray Microanalysis System from Thermo Electron Corporation, all it takes is a single button press to go from Sample to Answers in an instant. New and exclusive Direct to Phase software combines the steps of setting up the acquisition, waiting for the data to be collected and producing the results into a single, integrated procedure.

With Direct to Phase you visualize elemental phases as they are acquired and let software decide when you've reached optimal statistics. Get the best quality data without wasting time – displayed on screen, or presented via Microsoft® PowerPoint® or Microsoft Word. Look closer at Thermo for the shortest distance from Sample to Answer.

Learn more about how the NORAN System SIX saves you time at www.thermo.com/microanalysis.

Look closer for answers



Analyze • Detect • Measure • Control™

Thermo
ELECTRON CORPORATION

Semi In-Lens FE SEM

Ultra-high Resolution

6Å @ 30kV

True 1,000,000 X Imaging

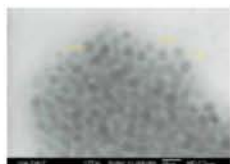


New JSM-7500F

The newest FE SEM from JEOL delivers the ultimate in performance and stability with 1.4nm resolution at 1kV and 0.6nm at 30kV. A patent-pending LABe low angle BSE detector dramatically reduces charging on non-conductive surfaces. Select the contrast that's best for your samples and compare multiple images on-screen from a suite of detectors.

Large samples? JSM-7500F provides full coverage of samples up to 200mm (dia.) and 40mm tall. Repetitive analyses? JSM-7500F automates, stores, and recalls routine operating conditions.

With true 1,000,000 X imaging, the JSM-7500F captures the intricate surface details of nanostructures everywhere.



STEM of nanoparticles



Mesoporous Silica

*Seeing is believing.
Visit us at M&M Booth #1603
and ask for a demo!*

*Another Extreme Imaging Solution
from*

JEOL

Stability • Performance • Productivity
jeolusa.com • salesinfo@jeol.com
978-535-5900