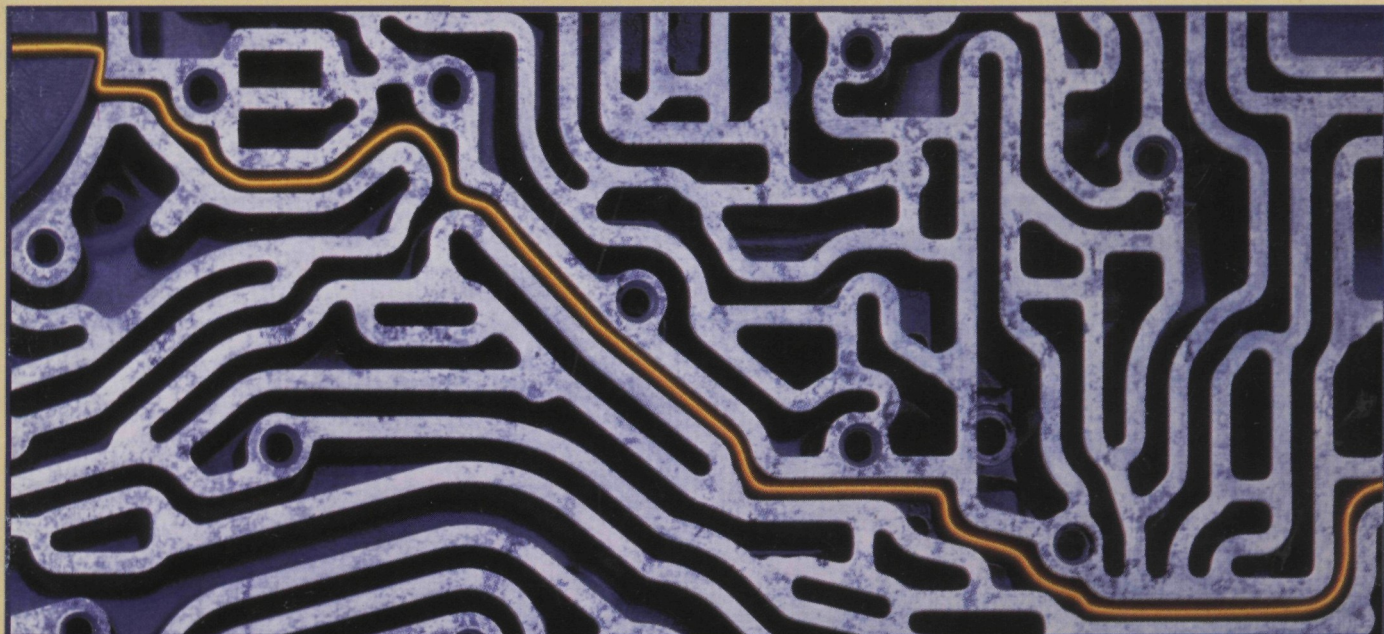


CNS SPECTRUMS®

The International Journal of Neuropsychiatric Medicine



Neural Mechanisms of the Alcohol Abuse Cycle

Brain Reward Circuits in Alcoholism

G. F. Koob and A. J. Roberts

Alcohol Withdrawal: Neuroadaptations and Sensitization

H. C. Becker

Brain Injury Associated with Chronic Alcoholism

P. W. Ragan, C. K. Singleton, P. R. Martin

Using Neuroimaging to Understand Alcohol's Brain Effects

M. S. George, C. C. Teneback, C. W. Bloomer, M. Horner, R. F. Anton

Neurocognitive Deficits and Recovery in Chronic Alcohol Abuse

S. J. Nixon and J. A. Phillips

*****5-DIGIT 87106
SCK 288

C90199 857689250431
MICHAEL O FLANAGAN, MD
507 TULANE PL NE
ALBUQUERQUE NM 87106-1344



Photo Essay By traversing a maze of new information about the neuroscience of alcohol abuse and dependence—including neuroanatomic, behavioral, and phenomenologic factors—the pieces of the puzzle are beginning to come together. **Articles Inside.**



More physicians are diagnosing Alzheimer's disease.....



*The most common adverse events leading to discontinuation in clinical trials with ARICEPT® (donepezil HCl) were nausea, diarrhea, and vomiting. Clinical studies of ARICEPT® have shown no increase, relative to placebo, in the incidence of either peptic ulcer disease or gastrointestinal bleeding. Nevertheless, cholinesterase inhibitors may be expected to increase gastric acid secretion. Therefore, patients (especially those at increased risk for developing ulcers — eg, history of ulcer disease, receiving concurrent nonsteroidal anti-inflammatory drugs) should be monitored closely for gastrointestinal bleeding. In clinical trials, syncopal episodes have been reported in association with the use of ARICEPT® (2% vs 1% for placebo).

That's why they're prescribing ARICEPT[®] (donepezil HCl)

CLINICALLY PROVEN TO ENHANCE COGNITIVE FUNCTION

With over 500,000 patient starts, ARICEPT[®] is the world's most-prescribed therapy for the treatment of mild to moderate Alzheimer's disease. Remember ARICEPT[®] for these important benefits:

- Once-daily dosing
- No titration required
- Excellent safety profile
- Well-tolerated therapy*

ONCE-A-DAY
ARICEPT[®]
(donepezil HCl)
5-MG AND 10-MG TABLETS

THERAPY TO REMEMBER[™]

*Please see brief summary of prescribing information
on the last page of this advertisement.*



ONCE-A-DAY ARICEPT® (donepezil HCl) THERAPY TO REMEMBER™ 5-MG AND 10-MG TABLETS

ARICEPT® (Donepezil Hydrochloride Tablets)

Brief Summary—see package insert for full prescribing information. **INDICATIONS AND USAGE** ARICEPT® is indicated for the treatment of mild to moderate dementia of the Alzheimer's type. **CONTRAINDICATIONS** ARICEPT® is contraindicated in patients with known hypersensitivity to donepezil hydrochloride or to piperidine derivatives. **WARNINGS Anesthesia:** ARICEPT®, as a cholinesterase inhibitor, is likely to exaggerate succinylcholine-type muscle relaxation during anesthesia. **Cardiovascular Conditions:** Because of their pharmacological action, cholinesterase inhibitors may have vagal effects on heart rate (eg, bradycardia). The potential for this action may be particularly important to patients with "sick sinus syndrome" or other supraventricular cardiac conduction conditions. Syncopal episodes have been reported in association with the use of ARICEPT®. **Gastrointestinal Conditions:** Through their primary action, cholinesterase inhibitors may be expected to increase gastric acid secretion due to increased cholinergic activity. Therefore, patients should be monitored closely for symptoms of active or occult gastrointestinal bleeding, especially those at increased risk for developing ulcers, eg, those with a history of ulcer disease or those receiving concurrent nonsteroidal anti-inflammatory drugs (NSAIDs). Clinical studies of ARICEPT® have shown no increase, relative to placebo, in the incidence of either peptic ulcer disease or gastrointestinal bleeding. ARICEPT®, as a predictable consequence of its pharmacological properties, has been shown to produce diarrhea, nausea, and vomiting. These effects, when they occur, appear more frequently with the 10 mg/day dose than with the 5 mg/day dose. In most cases, these effects have been mild and transient, sometimes lasting one to three weeks, and have resolved during continued use of ARICEPT®. **Genitourinary:** Although not observed in clinical trials of ARICEPT®, cholinomimetics may cause bladder outflow obstruction. **Neurological Conditions:** Seizures: Cholinomimetics are believed to have some potential to cause generalized convulsions. However, seizure activity also may be a manifestation of Alzheimer's Disease. **Pulmonary Conditions:** Because of their cholinomimetic actions, cholinesterase inhibitors should be prescribed with care to patients with a history of asthma or obstructive pulmonary disease. **PRECAUTIONS Drug-Drug Interactions Drugs Highly Bound to Plasma Proteins:** Drug displacement studies have been performed *in vitro* between this highly bound drug (96%) and other drugs such as furosemide, digoxin, and warfarin. ARICEPT® at concentrations of 0.3-10 µg/mL did not affect the binding of furosemide (5 µg/mL), digoxin (2 ng/mL), and warfarin (3 µg/mL) to human albumin. Similarly, the binding of ARICEPT® to human albumin was not affected by furosemide, digoxin and warfarin. **Effect of ARICEPT® on the Metabolism of Other Drugs:** No *in vivo* clinical trials have investigated the effect of ARICEPT® on the clearance of drugs metabolized by CYP 3A4 (eg, cisapride, terfenadine) or by CYP 2D6 (eg, imipramine). However, *in vitro* studies show a low rate of binding to these enzymes (mean K_i about 50-130 µM), that, given the therapeutic plasma concentrations of donepezil (164 nM), indicates little likelihood of interference. Whether ARICEPT® has any potential for enzyme induction is not known. Formal pharmacokinetic studies evaluated the potential of ARICEPT® for interaction with theophylline, cimetidine, warfarin and digoxin. No significant effects on the pharmacokinetics of these drugs were observed. **Effect of Other Drugs on the Metabolism of ARICEPT®:** Ketoconazole and quinidine, inhibitors of CYP450, 3A4 and 2D6, respectively, inhibit donepezil metabolism *in vitro*. Whether there is a clinical effect of these inhibitors is not known. Inducers of CYP 2D6 and CYP 3A4 (eg, phenytoin, carbamazepine, dexamethasone, rifampin, and phenobarbital) could increase the rate of elimination of ARICEPT®. Formal pharmacokinetic studies demonstrated that the metabolism of ARICEPT® is not significantly affected by concurrent administration of digoxin or cimetidine. **Use with Anticholinergics:** Because of their mechanism of action, cholinesterase inhibitors have the potential to interfere with the activity of anticholinergic medications. **Use with Cholinomimetics and Other Cholinesterase Inhibitors:** A synergistic effect may be expected when cholinesterase inhibitors are given concurrently with succinylcholine, similar neuromuscular blocking agents or cholinergic agonists such as bethanechol. **Carcinogenesis, Mutagenesis, Impairment of Fertility:** Carcinogenicity studies of donepezil have not been completed. Donepezil was not mutagenic in the Ames reverse mutation assay in bacteria. In the chromosome aberration test in cultures of Chinese hamster lung (CHL) cells, some clastogenic effects were observed. Donepezil was not clastogenic in the *in vivo* mouse micronucleus test. Donepezil had no effect on fertility in rats at doses up to 10 mg/kg/day (approximately 8 times the maximum recommended human dose on a mg/m² basis). **Pregnancy Pregnancy Category C:** Teratology studies conducted in pregnant rats at doses up to 16 mg/kg/day (approximately 13 times the maximum recommended human dose on a mg/m² basis) and in

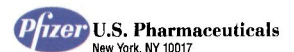
Body System/Adverse Event	Placebo (n=355)	ARICEPT® (n=747)
Percent of Patients With Any Adverse Event	72	74
Body as a Whole		
Headache	9	10
Pain, Various Locations	8	9
Accident	6	7
Fatigue	3	5
Cardiovascular System		
Syncope	1	2
Digestive System		
Nausea	6	11
Diarrhea	5	10
Vomiting	3	5
Anorexia	2	4
Hemic and Lymphatic System		
Echymosis	3	4
Metabolic and Nutritional Systems		
Weight Decrease	1	3
Musculoskeletal System		
Muscle Cramps	2	6
Arthritis	1	2
Nervous System		
Insomnia	6	9
Dizziness	6	8
Depression	<1	3
Abnormal Dreams	0	3
Somnolence	<1	2
Urogenital System		
Frequent Urination	1	2

age. **Other Adverse Events Observed During Clinical Trials** ARICEPT® has been administered to over 1700 individuals during clinical trials worldwide. Approximately 1200 of these patients have been treated for at least 3 months and more than 1000 patients have been treated for at least 6 months. Controlled and uncontrolled trials in the United States included approximately 900 patients. In regards to the highest dose of 10 mg/day, this population includes 650 patients treated for 3 months, 475 patients treated for 6 months and 116 patients treated for over 1 year. The range of patient exposure is from 1 to 1214 days. Treatment emergent signs and symptoms that occurred during 3 controlled clinical trials and two open-label trials in the United States were recorded as adverse events by the clinical investigators using terminology of their own choosing. To provide an overall estimate of the proportion of individuals having similar types of events, the events were grouped into a smaller number of standardized categories using a modified COSTART dictionary and event frequencies were calculated across all studies. These categories are used in the listing below. The frequencies represent the proportion of 900 patients from these trials who experienced that event while receiving ARICEPT®. All adverse events occurring at least twice are included, except for those already listed in Tables 1 or 2. COSTART terms too general to be informative, or events less likely to be drug caused. Events are classified by body system and listed using the following definitions: **frequent adverse events**—those occurring in at least 1/100 patients; **infrequent adverse events**—those occurring in 1/100 to 1/1000 patients. These adverse events are not necessarily related to ARICEPT® treatment and in most cases were observed at a similar frequency in placebo-treated patients in the controlled studies. No important additional adverse events were seen in studies conducted outside the United States. **Body as a Whole:** *Frequent:* influenza, chest pain, toothache; *Infrequent:* fever, edema face, periorbital edema, hernia hiatal, abscess, cellulitis, chills, generalized coldness, head fullness, listlessness. **Cardiovascular System:** *Frequent:* hypertension, vasodilation, atrial fibrillation, hot flashes, hypotension; *Infrequent:* angina pectoris, postural hypotension, myocardial infarction, AV block (first degree), congestive heart failure, arteritis, bradycardia, peripheral vascular disease, supraventricular tachycardia, deep vein thrombosis. **Digestive System:** *Frequent:* fecal incontinence, gastrointestinal bleeding, bloating, epigastric pain; *Infrequent:* eructation, gingivitis, increased appetite, flatulence, peridontal abscess, cholelithiasis, diverticulitis, drooling, dry mouth, fever sore, gastritis, irritable colon, tongue edema, epigastric distress, gastroenteritis, increased transaminases, hemorrhoids, ileus, increased thirst, jaundice, melena, polydipsia, duodenal ulcer, stomach ulcer. **Endocrine System:** *Infrequent:* diabetes mellitus, goiter. **Hemic and Lymphatic System:** *Infrequent:* anemia, thrombocytopenia, thrombocytopenia, eosinophilia, erythrocytopenia. **Metabolic and Nutritional Disorders:** *Frequent:* dehydration; *Infrequent:* gout, hypokalemia, increased creatine kinase, hyperglycemia, weight increase, increased lactate dehydrogenase. **Musculoskeletal System:** *Frequent:* bone fracture; *Infrequent:* muscle weakness, muscle fasciculation. **Nervous System:** *Frequent:* delusions, tremor, irritability, paresthesia, aggression, vertigo, ataxia, increased libido, restlessness, abnormal crying, nervousness, aphasia; *Infrequent:* cerebrovascular accident, intracranial hemorrhage, transient ischemic attack, emotional lability, neuralgia, coldness (localized), muscle spasm, dysphoria, gait abnormality, hypertension, hypokinesia, neurodermatitis, numbness (localized), paranoia, dysarthria, dysphasia, hostility, decreased libido, melancholia, emotional withdrawal, nystagmus, pacing. **Respiratory System:** *Frequent:* dyspnea, sore throat, bronchitis; *Infrequent:* epistaxis, postnasal drip, pneumonia, hyperventilation, pulmonary congestion, wheezing, hypoxia, pharyngitis, pleurisy, pulmonary collapse, sleep apnea, snoring. **Skin and Appendages:** *Frequent:* pruritus; *diaphoresis, urticaria; Infrequent:* dermatitis, erythema, skin discoloration, hyperkeratosis, alopecia, fungal dermatitis, herpes zoster, hirsutism, skin striae, night sweats, skin ulcer. **Special Senses:** *Frequent:* cataract, eye irritation, vision blurred; *Infrequent:* dry eyes, glaucoma, earache, limbus, blepharitis, decreased hearing, retinal hemorrhage, otitis externa, otitis media, bad taste, conjunctival hemorrhage, ear buzzing, motion sickness, spots before eyes. **Urogenital System:** *Frequent:* urinary incontinence, nocturia; *Infrequent:* dysuria, hematuria, urinary urgency, metrorrhagia, cystitis, anuresis, prostate hypertrophy, pyelonephritis, inability to empty bladder, breast fibroadenosis, fibrocystic breast, mastitis, pyuria, renal failure, vaginitis. **Postintroduction Reports** Voluntary reports of adverse events temporally associated with ARICEPT® that have been received since market introduction that are not listed above, and that there is inadequate data to determine the causal relationship with the drug include the following: abdominal pain, agitation, cholecystitis, confusion, convulsions, hallucinations, heart block, hemolytic anemia, hyponatremia, pancreatitis, and rash. **OVERDOSAGE** Because strategies for the management of overdose are continually evolving, it is advisable to contact a Poison Control Center to determine the latest recommendations for the management of an overdose of any drug. As in any case of overdose, general supportive measures should be utilized. Overdosage with cholinesterase inhibitors can result in cholinergic crisis characterized by severe nausea, vomiting, salivation, sweating, bradycardia, hypotension, respiratory depression, collapse and convulsions. Increasing muscle weakness is a possibility and may result in death if respiratory muscles are involved. Tertiary anticholinergics such as atropine may be used as an antidote for ARICEPT® overdosage. *Intravenous atropine sulfate titrated to effect* is recommended: an initial dose of 1.0 to 2.0 mg IV with subsequent doses based upon clinical response. Atypical responses in blood pressure and heart rate have been reported with other cholinomimetics when co-administered with quaternary anticholinergics such as glycopyrrolate. It is not known whether ARICEPT® and/or its metabolites can be removed by dialysis (hemodialysis, peritoneal dialysis, or hemofiltration). Dose-related signs of toxicity in animals included reduced spontaneous movement, prone position, staggering gait, lacrimation, clonic convulsions, depressed respiration, salivation, miosis, tremors, fasciculation and lower body surface temperature. **DOSAGE AND ADMINISTRATION** The dosages of ARICEPT® shown to be effective in controlled clinical trials are 5 mg and 10 mg administered once per day. Controlled clinical trials indicate that the 10 mg dose, with a one week titration, is likely to be associated with a higher incidence of cholinergic adverse events than the 5 mg dose. Because steady state is not achieved for 15 days and because the incidence of such effects may be influenced by the rate of dose escalation, treatment with a dose of 10 mg should not be contemplated until patients have been on a daily dose of 5 mg for 4 to 6 weeks. Whether or not to employ a dose of 10 mg is a matter of prescriber and patient preference. ARICEPT® should be taken in the evening, just prior to retiring, and may be taken with or without food.

Revised September, 1998

Adverse Event	No titration		One-week titration	Six-week titration
	Placebo (n=315)	5 mg/day (n=311)	10 mg/day (n=315)	10 mg/day (n=269)
Nausea	6%	5%	19%	6%
Diarrhea	5%	8%	15%	9%
Insomnia	6%	6%	14%	6%
Fatigue	3%	4%	8%	3%
Vomiting	3%	3%	8%	5%
Muscle Cramps	2%	6%	8%	3%
Anorexia	2%	3%	7%	3%

pregnant rabbits at doses up to 10 mg/kg/day (approximately 16 times the maximum recommended human dose on a mg/m² basis) did not disclose any evidence for a teratogenic potential of donepezil. However, in a study in which pregnant rats were given up to 10 mg/kg/day (approximately 8 times the maximum recommended human dose on a mg/m² basis) from day 17 of gestation through day 20 postpartum, there was a slight increase in still births and a slight decrease in pup survival through day 4 postpartum at this dose, the next lower dose tested was 3 mg/kg/day. There are no adequate or well-controlled studies in pregnant women. ARICEPT® should be used during pregnancy only if the potential benefit justifies the potential risk to the fetus. **Nursing Mothers** It is not known whether donepezil is excreted in human breast milk. ARICEPT® has no indication for use in nursing mothers. **Pediatric Use** There are no adequate and well-controlled trials to document the safety and efficacy of ARICEPT® in any illness occurring in children. **ADVERSE REACTIONS** **Adverse Events Leading to Discontinuation** The rates of discontinuation from controlled clinical trials of ARICEPT® due to adverse events for the ARICEPT® 5 mg/day treatment groups were comparable to those of placebo-treatment groups at approximately 5%. The rate of discontinuation of patients who received 7-day escalations from 5 mg/day to 10 mg/day, was higher at 13%. The most common adverse events leading to discontinuation, defined as those occurring in at least 2% of patients and at twice the incidence seen in placebo patients were nausea (1% [5 mg] and 3% [10 mg] vs 1% [placebo]), diarrhea (<1% [5 mg] and 3% [10 mg] vs 0% [placebo]), and vomiting (<1% [5 mg] and 2% [10 mg] vs <1% [placebo]). **Most Frequent Adverse Clinical Events Seen in Association with the Use of ARICEPT®** The most common adverse events, defined as those occurring at a frequency of at least 5% in patients receiving 10 mg/day and twice the placebo rate, are largely predicted by ARICEPT®'s cholinomimetic effects. These include nausea, diarrhea, insomnia, vomiting, muscle cramp, fatigue, and anorexia. These adverse events were often of mild intensity and transient, resolving during continued ARICEPT® treatment without the need for dose modification. There is evidence to suggest that the frequency of these common adverse events may be affected by the rate of titration. An open-label study was conducted with 269 patients who received placebo in the 15- and 30-week studies. These patients were titrated to a dose of 10 mg/day over a 6-week period. The rates of common adverse events were lower than those seen in patients titrated to 10 mg/day over one week in the controlled clinical trials and were comparable to those seen in patients on 5 mg/day. See Table 1 for a comparison of the most common adverse events following one week and six week titration regimens. **Adverse Events Reported in Controlled Trials** The events cited reflect experience gained under closely monitored conditions of clinical trials in a highly selected patient population. In actual clinical practice or in other clinical trials, these frequency estimates may not apply, as the conditions of use, reporting behavior, and the kinds of patients treated may differ. Table 2 lists treatment emergent signs and symptoms that were reported in at least 2% of patients in placebo-controlled trials who received ARICEPT® and for which the rate of occurrence was greater for ARICEPT® assigned than placebo assigned patients. In general, adverse events occurred more frequently in female patients and with advancing



CNS SPECTRUMS

The International Journal of Neuropsychiatric Medicine

EDITOR

Eric Hollander, MD
Mount Sinai School of Medicine
New York, NY

INTERNATIONAL EDITOR

Joseph Zohar, MD
Chaim Sheba Medical Center
Tel Aviv, Israel

ASSOCIATE INTERNATIONAL EDITOR

Donatella Marazziti, MD
University of Pisa
Pisa, Italy

EDITORIAL DIRECTOR

James La Rossa Jr.

BOARD OF ADVISORS

Margaret Altemus, MD
Cornell University Medical Center
New York, NY

Mitchell F. Brin, MD
Mount Sinai School of Medicine
New York, NY

John Caronna, MD
New York Hospital-Cornell
Medical Center, New York, NY

Dennis S. Charney, MD
Yale University
New Haven, CT

Emil F. Coccaro, MD
MCP at EPPH
Philadelphia, PA

Jeffrey L. Cummings, MD
University of California
Los Angeles, CA

Dwight L. Evans, MD
University of Pennsylvania
Philadelphia, PA

Mark George, MD
Medical University of South Carolina
Charleston, SC

Jack Gorman, MD
College of Physicians and
Surgeons, Columbia University
New York, NY

Thomas R. Insel, MD
Yerkes Primate Labs
Emory University School of Medicine
Atlanta, GA

Michael A. Jenike, MD
Massachusetts General Hospital
Charlestown, MA

Lorin M. Koran, MD
Stanford University Medical School
Stanford, CA

James Leckman, MD
Yale University
New Haven, CT

Herbert Y. Meltzer, MD
Vanderbilt University Medical Center
Nashville, TN

Stuart A. Montgomery, MD
St. Mary's Hospital Medical School
London, United Kingdom

Dennis L. Murphy, MD
National Institute of Mental Health
Bethesda, MD

Charles B. Nemeroff, MD, PhD
Emory University School of Medicine
Atlanta, GA

Katharine Phillips, MD
Brown University
Providence, RI

Harold A. Pincus, MD
American Psychiatric Association
Washington, DC

Stanley I. Rapoport, MD
National Institute of Mental Health
Bethesda, MD

Alan Schatzberg, MD
Stanford University Medical School
Stanford, CA

Dan J. Stein, MB
University of Stellenbosch
Tygerberg, South Africa

Norman Sussman, MD
New York University Medical School
New York, NY

Michael R. Trimble, MD
National Hospital for Neurology
and Neurosurgery
London, United Kingdom

H. M. van Praag, MD
University of Maastricht
Maastricht, The Netherlands

Herman G.M. Westenberg, MD
University Hospital Utrecht
Utrecht, The Netherlands

Richard Wyatt, MD
National Institute of Mental Health
Bethesda, MD

Stuart Yudofsky, MD
Baylor College of Medicine
Houston, TX

MBL COMMUNICATIONS

CEO & PUBLISHER

James La Rossa Jr.

PRESIDENT & ASSOCIATE PUBLISHER

Darren L. Brodeur

MANAGING EDITOR

Claire R. Roberts

ASSOCIATE EDITORIAL DIRECTOR

Genevieve Romano

PUBLISHING ASSOCIATES

Marla K. Lehner
Imre Balanli

ASSOCIATE EDITORS

Jenny R. Green
Lisa Nicpon
Steven A. Ovardia

ADMINISTRATIVE ASSISTANT

Leelawatee Ramadhin

ART DIRECTOR

Anthony J. Korsak

COPY EDITORS

Lauren A. Cerruto
Michelle Cervone, MD
Jonathan Lee
John Martino

CONTROLLER

Deborah Policarpio Gomez

CORPORATION COUNSEL

Kevin F. Saer, Esq.
Davis, Wright & Tremaine

OF COUNSEL

Susan G. La Rossa, Esq.
Putney, Twombly, Hall &
Hirson



MBL
Follow
The Leader

MBL Communications

Medical **B**roadcast **L**td.

ONCE-DAILY
PAXIL
PAROXETINE HCl

PAXIL (brand of paroxetine hydrochloride)

See complete prescribing information in SmithKline Beecham Pharmaceuticals literature or PDR. The following is a brief summary.

INDICATIONS AND USAGE: *Paxil* is indicated for the treatment of depression, obsessions and compulsions in patients with obsessive compulsive disorder (OCD) as defined in DSM-IV, and panic disorder, with or without agoraphobia, as defined in DSM-IV.

CONTRAINDICATIONS: Concomitant use in patients taking monoamine oxidase inhibitors (MAOIs) is contraindicated. (See WARNINGS and PRECAUTIONS.)

WARNINGS: Interactions with MAOIs may occur. Given the fatal interactions reported with concomitant or immediately consecutive administration of MAOIs and other SSRIs, do not use *Paxil* in combination with a MAOI or within 2 weeks of discontinuing MAOI treatment. Allow at least 2 weeks after stopping *Paxil* before starting a MAOI.

PRECAUTIONS: As with all antidepressants, use *Paxil* cautiously in patients with a history of mania. Use *Paxil* cautiously in patients with a history of seizures. Discontinue it in any patient who develops seizures.

The possibility of suicide attempt is inherent in depression and may persist until significant remission occurs. Close supervision of high-risk patients should accompany initial drug therapy. Write *Paxil* prescriptions for the smallest quantity of tablets consistent with good patient management in order to reduce the risk of overdose.

Reversible hyponatremia has been reported, mainly in elderly patients, patients taking diuretics or those who were otherwise volume depleted. Abnormal bleeding (mostly ecchymosis and purpura), including a case of impaired platelet aggregation, has been reported; the relationship to paroxetine is unclear.

Clinical experience with *Paxil* in patients with concomitant systemic illness is limited. Use cautiously in patients with diseases or conditions that could affect metabolism or hemodynamic responses. Observe the usual cautions in cardiac patients. In patients with severe renal impairment (creatinine clearance <30 mL/min.) or severe hepatic impairment, a lower starting dose (10 mg) should be used.

Caution patients about operating hazardous machinery, including automobiles, until they are reasonably sure that *Paxil* therapy does not affect their ability to engage in such activities. Tell patients 1) to continue therapy as directed; 2) to inform physicians about other medications they are taking or plan to take; 3) to avoid alcohol while taking *Paxil*; 4) to notify their physicians if they become pregnant or intend to become pregnant during therapy, or if they're nursing.

Weakness, hyperreflexia, and incoordination following use of an SSRI and sumatriptan have been rarely reported.

Concomitant use of *Paxil* with tryptophan is not recommended. Use cautiously with warfarin. When administering *Paxil* with cimetidine, dosage adjustment of *Paxil* after the 20 mg starting dose should be guided by clinical effect. When co-administering *Paxil* with phenobarbital or phenytoin, no initial *Paxil* dosage adjustment is needed; base subsequent changes on clinical effect. Concomitant use of *Paxil* with drugs metabolized by cytochrome P₄₅₀2D₆ (antidepressants such as nortriptyline, amitriptyline, imipramine, desipramine and fluoxetine; phenothiazines such as thioridazine; Type 1C antiarrhythmics such as propafenone, flecainide and encainide) or with drugs that inhibit this enzyme (e.g., quinidine) may require lower doses than usually prescribed for either *Paxil* or the other drug, approach concomitant use cautiously. An *in vivo* interaction study revealed that paroxetine had no effect on terfenadine pharmacokinetics. Additional *in vitro* studies showed that the inhibitory effects of paroxetine on other IIIA₄ substrates (astemizole, cisapride, triazolam and cyclosporin) was at least 100 times less potent than ketoconazole, a potent IIIA₄ inhibitor. Assuming that the relationship between paroxetine's *in vitro* Ki and its lack of effect on terfenadine's *in vivo* clearance predicts its effect on other IIIA₄ substrates, paroxetine's inhibition of IIIA₄ activity should have little clinical significance. Use caution when co-administering *Paxil* with tricyclic antidepressants (TCAs). TCA plasma concentrations may need monitoring and the TCA dose may need to be reduced. Administration of *Paxil* with another tightly protein-bound drug may shift plasma concentrations, resulting in adverse effects from either drug. Concomitant use of *Paxil* and alcohol in depressed patients is not advised. Undertake concomitant use of *Paxil* and lithium or digoxin cautiously. If adverse effects are seen when co-administering *Paxil* with procyclidine, reduce the procyclidine dose. Elevated theophylline levels have been reported with *Paxil* co-administration; monitoring theophylline levels is recommended.

In 2-year studies, a significantly greater number of male rats in the 20 mg/kg/day group developed reticulum cell sarcomas vs. animals given doses of 1 or 5 mg/kg/day. There was also a significantly increased linear trend across dose groups for the occurrence of lymphoreticular tumors in male rats. Although there was a dose-related increase in the number of tumors in mice, there was no drug-related increase in the number of mice with tumors. The clinical significance of these findings is unknown. There is no evidence of mutagenicity with *Paxil*.

Rats receiving paroxetine at 15 mg/kg/day (2.4 times the MRHD on a mg/m² basis) showed a reduced pregnancy rate.

Pregnancy Category C. Reproduction studies performed in rats and rabbits at doses up to 6 mg/kg/day, 8.1 (rat) and 1.9 (rabbit) times the MRHD on a mg/m² basis, have revealed no evidence of teratogenic effects or of selective toxicity to the fetus. However, rat pup deaths increased during the first 4 days of lactation when dosing occurred during the last trimester of gestation and continued throughout lactation. The cause of these deaths is not known. There are no adequate and well-controlled studies in pregnant women. *Paxil* should be used in pregnancy only if the potential benefit justifies the potential risk to the fetus. The effect of *Paxil* on labor and delivery in humans is unknown. Paroxetine is secreted in human milk; exercise caution when administering *Paxil* to a nursing woman. Safety and effectiveness in the pediatric population have not been established.

In worldwide premarketing *Paxil* clinical trials, 17% of *Paxil*-treated patients were ≥65 years of age. Pharmacokinetic studies revealed a decreased clearance in the elderly; however, there were no overall differences in the adverse event profile between older and younger patients.

ADVERSE REACTIONS: Incidence in Controlled Trials—Commonly Observed Adverse Events in Controlled Clinical Trials: The most commonly observed adverse events associated with the use of *Paxil* in the treatment of depression (incidence of 5% or greater and incidence for *Paxil* at least twice that for placebo): asthenia (15% vs. 6%), sweating (11% vs. 2%), nausea (26% vs. 9%), decreased appetite (6% vs. 2%), somnolence (23% vs. 9%), dizziness (13% vs. 6%), insomnia (13% vs. 6%), tremor (8% vs. 2%), nervousness (5% vs. 3%), ejaculatory disturbance (13% vs. 0%) and other male genital disorders (10% vs. 0%).

The most commonly observed adverse events associated with the use of paroxetine in the treatment of obsessive compulsive disorder (incidence of 5% or greater and incidence for *Paxil* at least twice that of placebo) were: nausea (23% vs. 10%), dry mouth (18% vs. 9%), decreased appetite (9% vs. 3%), constipation (16% vs. 6%), dizziness (12% vs. 6%), somnolence (24% vs. 7%), tremor (11% vs. 1%), sweating (9% vs. 3%), impotence (8% vs. 1%) and abnormal ejaculation (23% vs. 1%).

The most commonly observed adverse events associated with the use of paroxetine in the treatment of panic disorder (incidence of 5% or greater and incidence for *Paxil* at least twice that for placebo) were: asthenia (14% vs. 5%), sweating (14% vs. 6%), decreased appetite (7% vs. 3%), libido decreased (9% vs. 1%), tremor (9% vs. 1%), abnormal ejaculation (21% vs. 1%), female genital disorders (9% vs. 1%) and impotence (5% vs. 0%).

Twenty percent (1,199/6,145) of *Paxil* patients in worldwide clinical trials in depression and 11.8% (64/542) and 9.4% (44/469) of *Paxil* patients in worldwide trials in OCD and panic disorder, respectively, discontinued treatment due to an adverse event. The most common events (≥1%) associated with discontinuation and considered to be drug related include the following: depression—somnolence, agitation, tremor, nausea, diarrhea, dry mouth, vomiting, asthenia, abnormal ejaculation, sweating,

OCD—insomnia, dizziness, constipation, nausea, asthenia, abnormal ejaculation, impotence; panic disorder—somnolence, insomnia, nausea.

The following adverse events occurred in 6-week placebo-controlled trials of similar design at a frequency of 1% or more, in patients dosed (20 to 50 mg/day) for the treatment of depression: headache, asthenia, palpitation; vasodilation; sweating, rash; nausea, dry mouth, constipation, diarrhea, decreased appetite, flatulence, oropharynx disorder, dyspepsia, myopathy, myalgia, myasthenia, somnolence, dizziness, insomnia, tremor, nervousness, anxiety, paresthesia, libido decreased, drugged feeling, confusion; yawning; blurred vision, taste perversion; ejaculatory disturbance, other male genital disorders, urinary frequency, urination disorder, female genital disorders.

The following adverse events occurred at a frequency of 2% or more among OCD patients on *Paxil* who participated in placebo-controlled trials of 12-weeks duration in which patients were dosed in a range of 20 to 60 mg/day or among patients with panic disorder on *Paxil* who participated in placebo-controlled trials of 10 to 12 weeks duration in which patients were dosed in a range of 10 to 60 mg/day: asthenia, abdominal pain*, chest pain**, back pain*, chills, vasodilation**, palpitation**: sweating, rash**: nausea, dry mouth, constipation, diarrhea, decreased appetite, increased appetite; insomnia, somnolence, dizziness, tremor, nervousness**, libido decreased, agitation*, anxiety*, abnormal dreams**, concentration impaired**, depersonalization**, myoclonus, amnesia**, rhinitis**, abnormal vision**, taste perversion**, abnormal ejaculation, female genital disorder, impotence, urinary frequency, urination impaired**, urinary tract infection. *denotes panic disorder patients only. **denotes OCD patients only.

Studies show a clear dose dependency for some of the more common adverse events associated with *Paxil* use. There was evidence of adaptation to some adverse events with continued *Paxil* therapy (e.g., nausea and dizziness). Significant weight loss may be an undesirable result of *Paxil* treatment for some patients but, on average, patients in controlled trials had minimal (about 1 lb) loss. In placebo-controlled clinical trials, *Paxil*-treated patients exhibited abnormal values on liver function tests no more frequently than placebo-treated patients.

Other Events Observed During the Premarketing Evaluation of *Paxil*: During premarketing assessment in depression multiple doses of *Paxil* were administered to 6,145 patients in phase 2 and 3 studies. During premarketing clinical trials in OCD and panic disorder, 542 and 469 patients, respectively, received multiple doses of *Paxil*. The following adverse events were reported. Note: "frequent" = events occurring in at least 1/100 patients; "infrequent" = 1/100 to 1/1000 patients; "rare" = less than 1/1000 patients. Events are classified within body system categories and enumerated in order of decreasing frequency using the above definitions. It is important to emphasize that although the events occurred during *Paxil* treatment, they were not necessarily caused by it.

Body as a Whole: frequent: chills, malaise; infrequent: allergic reaction, carcinoma, face edema, moniliasis, neck pain; rare: abscess, adrenergic syndrome, cellulitis, neck rigidity, pelvic pain, peritonitis, shock, ulcer. **Cardiovascular System:** frequent: hypertension, syncope, tachycardia; infrequent: bradycardia, conduction abnormalities, electrocardiogram abnormal, hematoma, hypotension, migraine, peripheral vascular disorder; rare: angina pectoris, arrhythmia, atrial fibrillation, bundle branch block, cerebral ischemia, cerebrovascular accident, congestive heart failure, heart block, low cardiac output, myocardial infarct, myocardial ischemia, pallor, phlebitis, pulmonary embolus, supraventricular extrasystoles, thrombophlebitis, thrombosis, varicose vein, vascular headache, ventricular extrasystoles. **Digestive System:** infrequent: bruxism, colitis, dysphagia, eructation, gastroenteritis, gingivitis, glossitis, increased salivation, liver function tests abnormal, mouth ulceration, rectal hemorrhage, ulcerative stomatitis; rare: aphthous stomatitis, bloody diarrhea, bulimia, cholelithiasis, duodenitis, enteritis, esophagitis, fecal impactions, fecal incontinence, gastritis, gum hemorrhage, hematemesis, hepatitis, ileus, intestinal obstruction, jaundice, melena, peptic ulcer, salivary gland enlargement, stomach ulcer, stomatitis, tongue discoloration, tongue edema, tooth caries, tooth malformation. **Endocrine System:** rare: diabetes mellitus, hyperthyroidism, hypothyroidism, thyroiditis. **Hemic and Lymphatic Systems:** infrequent: anemia, leukopenia, lymphadenopathy, purpura; rare: abnormal erythrocytes, basophilia, eosinophilia, hypochromic anemia, iron deficiency anemia, leukocytosis, lymphedema, abnormal lymphocytes, lymphocytosis, microcytic anemia, monocytosis, normocytic anemia, thrombocytopenia.

Metabolic and Nutritional: frequent: edema, weight gain, weight loss; infrequent: hyperglycemia, peripheral edema, SGOT increased, SGPT increased, thirst; rare: alkaline phosphatase increased, bilirubinemia, BUN increased, creatinine phosphokinase increased, dehydration, gamma globulins increased, gout, hypercalcemia, hypercholesterolemia, hyperkalemia, hyperphosphatemia, hypocalcemia, hypoglycemia, hypokalemia, hyponatremia, ketosis, lactic dehydrogenase increased. **Musculoskeletal System:** frequent: arthralgia; infrequent: arthritis; rare: arthrosis, bursitis, myositis, osteoporosis, generalized spasm, tenosynovitis, tetany. **Nervous System:** frequent: amnesia, CNS stimulation, concentration impaired, depression, emotional lability, vertigo; infrequent: abnormal thinking, akinesia, alcohol abuse, ataxia, convulsion, depersonalization, dystonia, hallucinations, hostility, hyperkinesia, hypertonia, hyposthesia, incoordination, lack of emotion, manic reaction, neurosis, paralysis, paranoid reaction; rare: abnormal electroencephalogram, abnormal gait, antisocial reaction, aphasia, choreoathetosis, circumoral paresthesia, delirium, delusions, diplopia, drug dependence, dysarthria, dyskinesia, euphoria, extrapyramidal syndrome, fasciculations, grand mal convulsion, hyperalgesia, hypokinesia, hysteria, libido increased, manic-depressive reaction, meningitis, myelitis, neuropathy, nystagmus, peripheral neuritis, psychosis, psychotic depression, reflexes decreased, reflexes increased, stupor, trismus, withdrawal syndrome. **Respiratory System:** frequent: cough increased, rhinitis; infrequent: asthma, bronchitis, dyspnea, epistaxis, hyperventilation, pneumonia, respiratory flu, sinusitis, voice alteration; rare: emphysema, hemoptysis, hiccups, lung fibrosis, pulmonary edema, sputum increased. **Skin and Appendages:** frequent: pruritus; infrequent: acne, alopecia, dry skin, ecchymosis, eczema, furunculosis, urticaria; rare: angioedema, contact dermatitis, erythema nodosum, erythema multiforme, fungal dermatitis, herpes simplex, herpes zoster, hirsutism, maculopapular rash, photosensitivity, seborrhea, skin discoloration, skin hypertrophy, skin melanoma, skin ulcer, vesiculobullous rash. **Special Senses:** frequent: tinnitus; infrequent: abnormality of accommodation, conjunctivitis, ear pain, eye pain, mydriasis, otitis media, taste loss, visual field defect; rare: amblyopia, anisocoria, blepharitis, cataract, conjunctival edema, corneal ulcer, deafness, exophthalmos, eye hemorrhage, glaucoma, hyperacusis, keratoconjunctivitis, night blindness, otitis externa, parosmia, photophobia, ptosis, retinal hemorrhage. **Urogenital System:** infrequent: abortion, amenorrhea, breast pain, cystitis, dysmenorrhea, dysuria, hematuria, menorrhagia, nocturia, polyuria, urethritis, urinary incontinence, urinary retention, urinary urgency, vaginitis; rare: breast atrophy, breast carcinoma, breast enlargement, breast neoplasm, epididymitis, female lactation, fibrocystic breast, kidney calculus, kidney function abnormal, kidney pain, leukorrhea, mastitis, metrorrhagia, nephritis, oliguria, prostatic carcinoma, pyuria, urethritis, uterine spasm, uterolith, vaginal hemorrhage, vaginal moniliasis.

Postmarketing Reports
Voluntary reports of adverse events that have been received since market introduction and not listed above that may have no causal relationship with *Paxil* include—acute pancreatitis, elevated liver function tests (the most severe cases were deaths due to liver necrosis, and grossly elevated transaminases associated with severe liver dysfunction), Guillain-Barré syndrome, toxic epidermal necrolysis, priapism, thrombocytopenia, syndrome of inappropriate ADH secretion, symptoms suggestive of prolactinemia and galactorrhea, neuroleptic malignant syndrome-like events; extrapyramidal symptoms which have included akathisia, bradykinesia, cogwheel rigidity, dystonia, hypertonia, oculogyric crisis (which has been associated with concomitant use of pimozide), tremor and trismus; and serotonin syndrome, associated in some cases with concomitant use of serotonergic drugs and with drugs which may have impaired *Paxil* metabolism (symptoms have included agitation, confusion, diaphoresis, hallucinations, hyperreflexia, myoclonus, shivering, tachycardia and tremor). There have been spontaneous reports that abrupt discontinuation may lead to symptoms such as dizziness, sensory disturbances, agitation or anxiety, nausea and sweating; these events are generally self-limiting. There has been a report of an elevated phenytoin level after 4 weeks of *Paxil* and phenytoin co-administration, and a report of severe hypotension when *Paxil* was added to chronic metoprolol treatment.

DRUG ABUSE AND DEPENDENCE: Controlled Substance Class: *Paxil* is not a controlled substance. Evaluate patients carefully for history of drug abuse and observe such patients closely for signs of *Paxil* misuse or abuse (e.g., development of tolerance, increments of dose, drug-seeking behavior).
BRS-PXL14

SB SmithKline Beecham
Pharmaceuticals
Philadelphia, PA 19101

JANSSEN
SmithKline Beecham
1998

In depression,
panic disorder
and OCD

Anxiety
symptoms
mean
turmoil

Paxil[®]
means
peace

insomnia
anxiety
nervousness
PANIC
anxiety
PANIC
hopelessness
agitation
insomnia
sadness
nervousness
SADNESS
agitation
hopelessness
insomnia
nervousness
hopelessness
anxiety
nervousness
PANIC
sadness
hopelessness
nervousness
INSOMNIA
anxiety
hopelessness
insomnia
PANIC
agitation

Most common adverse events (incidence of 5% or greater and incidence for *Paxil* at least twice that for placebo) in depression, or OCD or panic disorder studies include nausea, somnolence, abnormal ejaculation, dry mouth, constipation, asthenia, sweating, dizziness, insomnia, tremor, female genital disorders, libido decreased, decreased appetite, impotence and nervousness. Concomitant use of *Paxil* in patients taking monoamine oxidase inhibitors (MAOIs) is contraindicated.

Please see brief summary of prescribing information adjacent to this advertisement.

PX7807

Antidepressant efficacy with anxiolytic effect

ONCE-DAILY
PAXIL[®]
PAROXETINE HCl

Table of Contents

Feature Articles

- 17 Introduction: Comments on Neuroscience Advances in Alcoholism—Implications for Clinical Care in the 21st Century**
By Raymond F. Anton, MD
- 23 Brain Reward Circuits in Alcoholism**
By George F. Koob, PhD, and Amanda J. Roberts, PhD
- 38 Alcohol Withdrawal: Neuroadaptation and Sensitization**
By Howard C. Becker, PhD
- 66 Brain Injury Associated With Chronic Alcoholism**
By Paul W. Ragan, MD, Charles K. Singleton, PhD, and Peter R. Martin, MD
- 88 Using Neuroimaging to Understand Alcohol's Brain Effects**
By Mark S. George, MD, Charlotte C. Teneback, Courtney W. Bloomer, Michael D. Horner, PhD, and Raymond F. Anton, MD
- 95 Neurocognitive Deficits and Recovery in Chronic Alcohol Abuse**
By Sara Jo Nixon, PhD, and Julia A. Phillips, PhD

CNS SPECTRUMS®

The International
Journal of
Neuropsychiatric
Medicine

Volume 4 • Number 1
January 1999

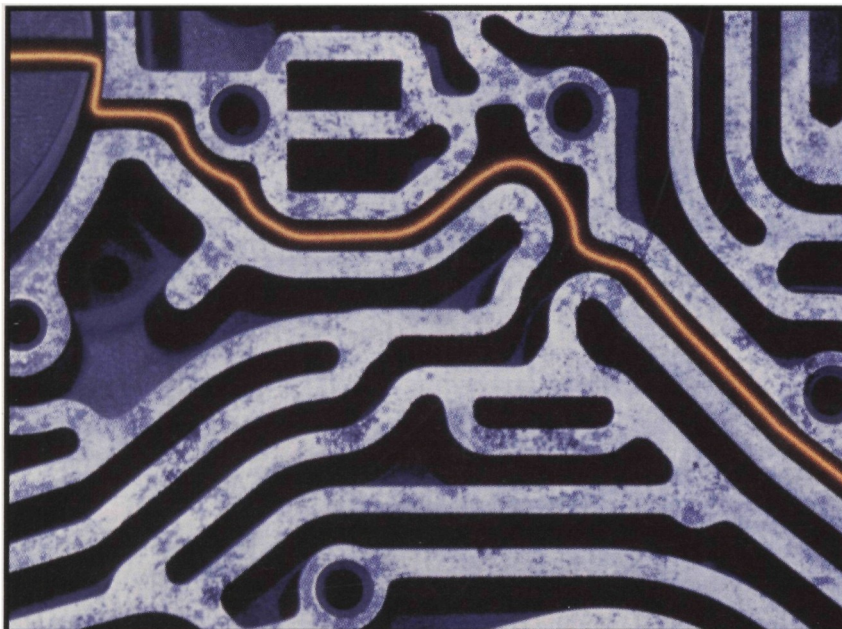


PHOTO ESSAY

By traversing a maze of increasing information about the neuroscience of alcohol abuse and dependence—including neuroanatomic, behavioral, and phenomenologic factors—the pieces of the puzzle are beginning to come together, according to guest editor, Raymond F. Anton, MD, and an awareness of how they connect is almost palpable.

Table of Contents

Departments / Monthly Columns

DIGEST

- 13 Excerpts from the January Journal

PUBLISHER'S REPORT

- 14 Three Steps Ahead
By James La Rossa Jr.

POINT & COMMENTARY

- 16 The Neuroscience and Neuropsychiatry of Alcohol Abuse
By Eric Hollander, MD

NOTA BENE

- 18 Briefs from the Fields of Neurology & Neuropsychiatry

DIRECTORY OF SERVICES

- 43 1998 indices by subject and author, subscription information, authors' guidelines, order forms, etc.

CONTINUING MEDICAL EDUCATION

- 105 This continuing medical education series gives the reader the opportunity to test his/her understanding and recall of clinical material presented in this issue. Approved for 3.0 credit hours in Category 1.

INDICES

- 110 By subject and author

CNS Spectrums (ISSN 1092-8529)

is published monthly by
MBL Communications,
665 Broadway,
New York, NY 10012-2302.

Periodicals postage paid
at New York, NY, and at
additional mailing offices.

One year subscription rates:
domestic \$90;
foreign \$145;
in-training \$50.

For subscriptions:
Fax: 212-328-0600.

E-mail:
cns@mblcommunications.com

Postmaster:
Send address changes to
CNS Spectrums
c/o PPS Medical Marketing Group
264 Passaic Ave.
Fairview, NJ 07004-2595

For editorial and advertising inquiries, please fax 212-328-0600.

Opinions and views expressed by authors are their own and do not necessarily reflect the views of the publisher, MBL Communications, or the editorial advisory board. Advertisements in **CNS Spectrums** are accepted on the basis of adherence to ethical medical standards, but acceptance does not imply endorsement by **CNS Spectrums**, or the publisher.

CNS Spectrums® is a registered trademark of **CNS Spectrums, LLC**, New York, NY.

Permission to reproduce articles in whole or part must be obtained in writing from the publisher. Copyright ©1999 by MBL Communications. All rights reserved. Printed in the United States.



An **MBL** Journal
Medical Broadcast Limited

Hostile outside.

Fragile inside.



- ◆ Improving a broad range of psychotic symptoms*
 - Hostility, delusions, excitement, suspiciousness, hallucinations
 - Blunted affect, emotional withdrawal, poor rapport, apathy
- ◆ Low incidence of†
 - Movement disorders
 - Excessive sedation
 - Anticholinergic effects
- ◆ The #1 prescribed antipsychotic in long-term care¹
- ◆ Available in tablets and oral solution; convenient B.I.D. and Q.D. dosing

Risperdal[®]
1, 2, 3, 4 mg tablets
oral solution 1 mg/mL



RISPERIDONE

Gentler days ahead.

For additional medical information on the use of RISPERDAL, please call 1-800-JANSSEN (1-800-526-7736).

* The Positive and Negative Syndrome Scale (PANSS) in its entirety also includes 16 general psychopathology score items; therefore, conclusions as to efficacy outcomes of individual items should not be drawn.

† Percentage of adult patients reporting adverse events and using 2 mg/day dose in a clinical trial: movement disorders (13%), excessive sedation (2%), anticholinergic effects (up to 5%).

Clinical trials were conducted in adult patients with chronic schizophrenia; limited data are available in geriatric patients with psychoses.

The most common adverse events reported in premarketing clinical trials in adults (n > 2600) were insomnia, agitation, movement disorders, headache, anxiety, and rhinitis; less common were somnolence, dizziness, constipation, nausea, and tachycardia.

Prescribing should be consistent with the need to minimize the risk of tardive dyskinesia; if its signs and symptoms appear, discontinuation of RISPERDAL should be considered.

Reference: 1. IMS Long-Term Care Audit, January 1998.

Please see brief summary of Prescribing Information on adjacent page.



JANSSEN
ONE TO ONE
Customer Action Center

1-800-JANSSEN

8 AM to 8 PM ET, Mon to Fri.

JANSSEN  PHARMACEUTICA
RESEARCH FOUNDATION

SB SmithKline Beecham
Pharmaceuticals

© Janssen Pharmaceutica Inc. 1998 JPI-RS-470-1R 5/98

