

# Polar Record

Editor: Dr Bernard Stonehouse  
Scott Polar Research Institute,  
Cambridge CB2 1ER, U.K.

**Polar Record** is published four times yearly, in January, April, July and October, from the Scott Polar Research Institute. Devoted to polar and sub-polar research, it covers both ends of the earth and a wide range of disciplines from archaeology to zoology, including glaciology, geophysics and other earth sciences.

The journal includes papers on current research, political and legal issues, short notes, reviews of new books, letters, brief topical items, obituaries, and reports from *SCAR Bulletin*, which records the activities of the Scientific Committee on Antarctic Research.

**Polar Record** is distributed internationally, keeping its readers aware of contemporary developments in polar and sub-polar regions, and providing a valuable source of historical reference. The annual subscription is only £25.00 for individuals, and £35.00 for institutions.

---

---

## Recent and forthcoming topics:

The growth, structure, and disintegration of Arctic ice shelves -

*M. O. Jeffries*

Attraction of polar bears to offshore drilling sites in the eastern Beaufort Sea - *Ian Stirling*

Greenland: a country in transition - *Tom Høyem*

The Antarctic minerals regime negotiations - *Peter Beck*

Control of spring run-off in northern rivers: the ice-veil concept -

*G. S. H. Lock*

Assessment of a small snowmobile for long-distance unsupported travel - *J. R. Oszczewski, J.*

*B. Cain and L. D. Reed*

Substantial changes in the coastline of Antarctica revealed by satellite imagery - *J. G. Ferrigno*

*and W. G. Gould*

Soviet proposals for the Arctic; a policy declaration by Mr Gorbachev - *T. E. Armstrong*

Polar cap and other auroral events observed from Spitzbergen - *D. A. R. Simmons and J. K.*

*Henriksen*

The ARA *Islas Orcadas* marine geology coring programme: a research bibliography - *D. S.*

*Cassidy*

Sea ice conditions during an early spring voyage in the eastern Weddell Sea, Antarctic - *H.*

*Eicken, T. C. Grenfell and B. Stonehouse*

---

---

To order your copy, send payment to:  
The Journals Subscription Manager,  
Cambridge University Press, The  
Edinburgh Building, Shaftesbury Road,  
Cambridge CB2 2RU, England



**Cambridge  
Journals**

*Starting a new series*

# Bioorganic Marine Chemistry

Editor: P. J. Scheuer

The present series, "Bioorganic Marine Chemistry", is being launched at a time, when we have the fundamental knowledge and the requisite instrumentation to probe the molecular basis of many biological phenomena. Worldwide interest in the organic chemistry of marine plants and animals was stimulated in the late 1960's through conferences, publications, and a singular event - the discovery of prostaglandins in a gorgonian coral.

The study of marine natural products remains firmly anchored in chemistry, i.e., in molecular integrity, yet continues to seek greater involvement in functional biology. Involvement with biology started on three fronts simultaneously: a study of chemical interactions occurring in the marine habitat, i.e., marine ecology; a search for meaningful and appropriate bioassays designed to guide isolation and to predict the nature and degree of biological activity, and finally, a delineation of biological activity that might lead to application in medicine or agriculture.

The scope of this series is the entire domain of marine bioorganic chemistry - ecology, pharmacology, biosynthesis, molecular structure, laboratory synthesis. Marine biologists, pharmacologists, organic and medicinal chemists will be the prime audience. The level of the reviews will be geared to researchers and graduate students in biology, chemistry and biomedicine. Complete documentation will allow ready entry into the primary literature.

Springer-Verlag  
Berlin Heidelberg New York  
London Paris Tokyo

Heidelberger Platz 3, D-1000 Berlin 33 · 175 Fifth Ave.,  
New York, NY 10010, USA · 28, Lurke Street, Bedford  
MK40 3HU, England · 26, rue des Carmes, F-75005 Paris  
37-3, Hongo 3-chome, Bunkyo-ku, Tokyo 113, Japan



## Volume 1

1987. Approx. 15 figures. Approx. 200 pages. Hard cover DM 118,-,  
ISBN 3-540-17884-8

The book contains the following four contributions:

*V. J. Paul, W. Fenical*

**Natural Products Chemistry and Chemical Defense in Tropical Marine Algae of the Phylum Chlorophyta**

*P. Karuso*

**Chemical Ecology of the Nudibranchs**

*N. Fusetani*

**Marine Metabolites Which Inhibit Development of Echinoderm Embryos**

*M. H. G. Munro, R. T. Luibrand, J. W. Blunt*

**The Search for Antiviral and Anticancer Compounds from Marine Organisms**

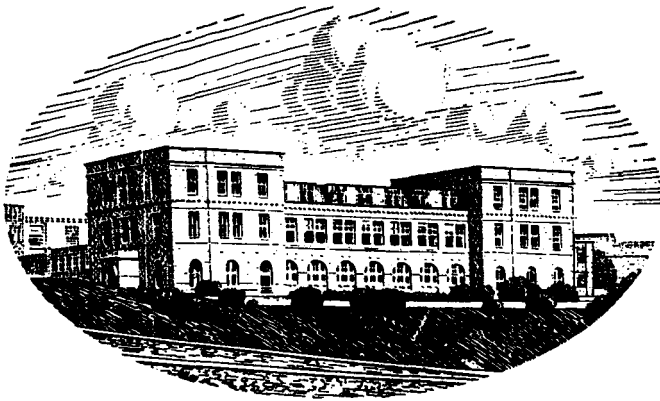
15/5/87

**Springer**

**JOURNAL OF THE  
MARINE BIOLOGICAL ASSOCIATION  
OF THE UNITED KINGDOM**

*The Council of the Marine Biological Association wish it to be understood that they do not accept responsibility for the accuracy of statements published in this Journal, excepting when those statements are contained in an official report of the Council.*

**JOURNAL OF THE  
MARINE BIOLOGICAL  
ASSOCIATION  
OF THE UNITED KINGDOM**



**THE PLYMOUTH LABORATORY**

**VOLUME 68**

**1988**

**CAMBRIDGE UNIVERSITY PRESS  
CAMBRIDGE  
LONDON NEW YORK NEW ROCHELLE  
MELBOURNE SYDNEY**

PUBLISHED BY  
THE PRESS SYNDICATE OF THE UNIVERSITY OF CAMBRIDGE

The Pitt Building, Trumpington Street, Cambridge, CB2 1RP  
32 East 57th Street, New York, NY 10022, USA  
10 Stamford Road, Oakleigh, Melbourne 3166 Australia

© Copyright Marine Biological Association of the UK 1988

*Printed in Great Britain at the University Press, Cambridge*

## CONTENTS OF VOLUME 68

Number 1, pp. 1-217, 5 February 1988  
 Number 2, pp. 219-363, 4 May 1988  
 Number 3, pp. 365-548, 1 August 1988  
 Number 4, pp. 549-797, 7 November 1988

	Page
Report of the Council for 1987-88 . . . . .	751
Income and Expenditure Account and Balance Sheet . . . . .	791
Alexander, C.G. The paragnaths of some intertidal crustaceans . . . . .	581
Al-Kadhomy, N.K. and Hughes, G.M. Histological study of different regions of the skin and gills in the mudskipper <i>Boleophthalmus boddarti</i> with respect to their respiratory function . . . . .	413
See also Hughes and Al-Kadhomy . . . . .	489
Ansell, A.D., Robb, L. and Powell, H.T. Algal-induced dislodgement as a cause of bivalve mortality on some Scottish beaches . . . . .	219
Barnes, R.S.K. On reproductive strategies in adjacent lagoonal and intertidal-marine populations of the marine gastropod <i>Hydrobia ulvae</i> . . . . .	365
Basford, D. and Eleftheriou, A. The benthic environment of the North Sea (56° to 61°N) . . . . .	125
Beard, J.B., see Davenport and Beard . . . . .	15
Bellan-Santini, D., see Dauvin and Bellan-Santini . . . . .	659
Bhaud, M. Change in setal pattern during early development of <i>Eupolyornia nebulosa</i> (Polychaeta: Terebellidae) grown in simulated natural conditions . . . . .	677
Boalch, G.T., see Southward, Boalch and Maddock . . . . .	423
Bryan, G.W., Gibbs, P.E. and Burt, G.R. A comparison of the effectiveness of tri-n-butyltin chloride and five other organotin compounds in promoting the development of imposex in the dog-whelk, <i>Nucella lapillus</i> . . . . .	733
Burnell, G.M., see Gosling and Burnell . . . . .	251
Burt, G.R. See Bryan, Gibbs and Burt . . . . .	733
See Gibbs, Pascoe and Burt . . . . .	715
Caceci, T., Neck, K.F., Lewis, D.H. and Sis, R.F. Ultrastructure of the hepatopancreas of the Pacific white shrimp, <i>Penaeus vannamei</i> (Crustacea: Decapoda) . . . . .	323
Christensen, T. Salinity preference of twenty species of <i>Vaucheria</i> (Tribophyceae) . . . . .	531
Claridge, P.N., see Potter, Gardner and Claridge . . . . .	295
Dando, P.R., see Southward and Dando . . . . .	627

Dauvin, J.-C. and Bellan-Santini, D. Illustrated key to <i>Ampelisca</i> species from the north-eastern Atlantic . . . . .	659
Davenport, J. and Beard, J.B. Observations on the temperature and salinity relations of <i>Lasaea rubra</i> . . . . .	15
Davies, A.G. and Smith, M.A. Alkaline phosphatase activity in the western English Channel . . . . .	239
De La Serna, J.M., see Muñoz-Chápuli, Rey Salgado and De La Serna . . . . .	315
Diop, M., see Guillou and Diop . . . . .	41
Edwards, J.M. See Potts, Keenleyside and Edwards . . . . .	277
See Potts, Robinson and Edwards . . . . .	287
Eleftheriou, A., see Basford and Eleftheriou . . . . .	125
Evans, F., see Roff, Middlebrook and Evans . . . . .	143
Fernandez Castro, N. and Le Pennec, M. Modalities of brooding and morphogenesis of larvae in <i>Ostrea puelchana</i> (D'Orbigny) under experimental rearing . . . . .	399
French, D., see Kruuk, Nolet and French . . . . .	601
Gardner, D.C., see Potter, Gardner and Claridge . . . . .	295
Gibbs, P.E., Pascoe, P.L. and Burt, G.R. Sex change in the female dog-whelk, <i>Nucella lapillus</i> , induced by tributyltin from antifouling paints . . . . .	715
See also Bryan, Gibbs and Burt . . . . .	733
Gosling, E.M. and Burnell, G.M. Evidence for selective mortality in <i>Chlamys varia</i> (L.) transplant experiments . . . . .	251
Guillou, M. and Diop, M. Ecology and demography of a population of <i>Anseropoda placenta</i> (Echinodermata: Asteroidea) in the Bay of Brest, Brittany . . . . .	41
Harbison, G.R., see Larson, Madin and Harbison . . . . .	689
Harris, R.P., see Pingree and Harris . . . . .	519
Heffernan, P. Ultrastructural and histochemical studies of the digestive system of <i>Pholoe minuta</i> (Polychaeta: Sigalionidae) . . . . .	447
Heffernan, P. and Keegan, B.F. The larval development of <i>Pholoe minuta</i> (Polychaeta: Sigalionidae) in Galway Bay, Ireland . . . . .	339
Holmes, J.M.C. and O'Connor, J.P. A portable light-trap for collecting marine crustaceans . . . . .	235
Hughes, G.M. and Al-Kadhomy, N.K. Changes in scaling of respiratory systems during the development of fishes . . . . .	489
See also Al-Kadhomy and Hughes . . . . .	413
Hughes, G.M. and Kikuchi, Y. Effects of temperature on the deformability of red blood cells of rainbow trout and ray . . . . .	619



Hughes, R.G. Dispersal by benthic invertebrates: the <i>in situ</i> swimming behaviour of the amphipod <i>Corophium volutator</i> . . . . .	565
Jenkins, K.D., <i>see</i> Mason, Jenkins and Sullivan . . . . .	61
Keegan, B.F., <i>see</i> Heffernan and Keegan . . . . .	339
Keenleyside, M.H.A., <i>see</i> Potts, Keenleyside and Edwards . . . . .	277
Kelley, D.F. Age determination in bass and assessment of growth and year-class strength . . . . .	179
Kikuchi, Y., <i>see</i> Hughes and Kikuchi . . . . .	619
Kruuk, H., Nolet, B. and French, D. Fluctuations in numbers and activity of inshore demersal fishes in Shetland . . . . .	601
Larson, R.J., Madin, L.P. and Harbison, G.R. <i>In situ</i> observations of deepwater medusae in the genus of <i>Deepstaria</i> , with a description of <i>D. reticulum</i> , sp. nov. . . . .	689
Le Pennec, M., <i>see</i> Fernandez Castro and Le Pennec . . . . .	399
Lewis, D.H., <i>see</i> Caceci <i>et al.</i> . . . . .	323
Lewis, J. Cysts and sediments: <i>Gonyaulax polyedra</i> ( <i>Lingulodinium machaerophorum</i> ) in Loch Creran . . . . .	701
Lynn, D.H. and Montagnes, D.J.S. Taxonomic descriptions of some conspicuous species of strobilidiine ciliates (Ciliophora: Choreotrichida) from the Isles of Shoals, Gulf of Maine . . . . .	639
Lynn, D.H., Montagnes, D.J.S. and Small, E.B. Taxonomic descriptions of some conspicuous species in the family Strombidiidae (Ciliophora: Oligotrichida) from the Isles of Shoals, Gulf of Maine . . . . .	259
McCleave, J.D., <i>see</i> Wippelhauser and McCleave . . . . .	81
MacOscar, K.C., <i>see</i> Parker, Rosell and MacOscar . . . . .	555
Madin, L.P., <i>see</i> Larson, Madin and Harbison . . . . .	689
Maddock, L., <i>see</i> Southward, Boalch and Maddock . . . . .	423
Mason, A.Z., Jenkins, K.D. and Sullivan, P.A. Mechanisms of trace metal accumulation in the polychaete <i>Neanthes arenaceodentata</i> . . . . .	61
Middlebrook, K., <i>see</i> Roff, Middlebrook and Evans . . . . .	143
Montagnes, D.J.S. <i>See</i> Lynn and Montagnes . . . . .	639
<i>See</i> Lynn, Montagnes and Small . . . . .	259
Muñoz-Chápuli, R., Rey Salgado, J.C. and De La Serna, J.M. Biogeography of <i>Isistius brasiliensis</i> in the north-eastern Atlantic, inferred from crater wounds on swordfish ( <i>Xiphias gladius</i> ) . . . . .	315
Mustaquim, J. Isozyme variation in three <i>Nereis</i> species from five localities in the U.K. . . . .	549
Neck, K.F., <i>see</i> Caceci <i>et al.</i> . . . . .	323
Nicolaidou, A. Notes on the behaviour of <i>Pectinaria koreni</i> . . . . .	55

Nolet, B., <i>see</i> Kruuk, Nolet and French	601
Nugegoda, D. and Rainbow, P.S. Effect of a chelating agent (EDTA) on zinc uptake and regulation by <i>Palaemon elegans</i> (Crustacea: Decapoda)	25
O'Connor, J.P., <i>see</i> Holmes and O'Connor	235
Parker, J.G., Rosell, R.S. and MacOscar, K.C. The phytoplankton production cycle in Belfast Lough	555
Pascoe, P.L., <i>see</i> Gibbs, Pascoe and Burt	715
Pawlik, J.R. Larval settlement and metamorphosis of gregarious sabellariid polychaetes: <i>Sabellaria alveolata</i> compared with <i>Phragmatopoma californica</i>	101
Pingree, R.D. and Harris, R.P. An <i>in vivo</i> fluorescence response in the Bay of Biscay in June	519
Potter, I.C., Gardner, D.C. and Claridge, P.N. Age composition, growth, movements, meristics and parasites of the whiting, <i>Merlangius merlangus</i> , in the Severn Estuary and Bristol Channel	295
Potts, G.W., Keenleyside, M.H.A. and Edwards, J.M. The effect of silt on the parental behaviour of the sea stickleback, <i>Spinachia</i> <i>spinachia</i>	277
Potts, G.W., Robinson, S.G. and Edwards, J.M. An underwater event recorder for use in behavioural research	287
Powell, H.T., <i>see</i> Ansell, Robb and Powell	219
Pugh, P.R. & Youngbluth, M.J. A new species of <i>Halistemma</i> (Siphonophora: Physonectae: Agalmidae) collected by submersible	1
Rainbow, P.S., <i>see</i> Nugegoda and Rainbow	25
Rangeley, R.W. and Thomas, M.L.H. Littoral stratification in growth form and fecundity of the rock barnacle, <i>Semibalanus</i> <i>balanoides</i>	591
Rey Salgado, J.C., <i>see</i> Muñoz-Chápuli Rey Salgado and De La Serna	315
Robb, L., <i>see</i> Ansell, Robb and Powell	219
Robinson, S.G., <i>see</i> Potts, Robinson and Edwards	287
Roff, J.C., Middlebrook, K. and Evans, F. Long-term variability in North Sea zooplankton off the Northumberland coast: productivity of small copepods and analysis of trophic interactions	143
Rosell, R.S., <i>see</i> Parker, Rosell and MacOscar	555
Scott, J.M. Effect of growth rate on the physiological rates of a chemostat-grown rotifer <i>Encentrum</i> <i>linnhei</i>	165
Simkiss, K., <i>see</i> Watkins and Simkiss	93
Sis, R.F., <i>see</i> Caceci <i>et al.</i>	323
Small, E.B., <i>see</i> Lynn, Montagnes and Small	259

Smith, M.A., <i>see</i> Davies and Smith . . . . .	239
Southward, A.J., Boalch, G.T. and Maddock, L. Fluctuations in the herring and pilchard fisheries of Devon and Cornwall linked to change in climate since the 16th century . . . . .	423
Southward, A.J. and Dando, P.R. Distribution of Pogonophora in canyons of the Bay of Biscay: factors controlling abundance and depth range . . . . .	627
Southward, A.J. and Southward, E.C. Disappearance of the warm-water hermit crab <i>Clibanarius erythropus</i> from south-west Britain . . . . .	409
Southward, E.C. Development of the gut and segmentation of newly settled stages of <i>Ridgeia</i> (Vestimentifera): implications for relationship between Vestimentifera and Pogonophora . . . . .	465
<i>See also</i> Southward and Southward . . . . .	409
Stock, J.H. Lamippidae (Copepoda: Siphonostomatoida) parasitic in <i>Alcyonium</i> . . . . .	351
Sullivan, P.A., <i>see</i> Mason, Jenkins and Sullivan . . . . .	61
Thomas, M.L.H., <i>see</i> Rangeley and Thomas . . . . .	591
Thompson, T.E. Acidic allomones in marine organisms . . . . .	499
Waite, M.E. and Walker, G. The haemocytes of balanomorph barnacles . . . . .	391
Walker, G. Observations on the larval development of <i>Sacculina carcini</i> (Crustacea: Cirripedia: Rhizocephala) . . . . .	377
<i>See also</i> Waite and Walker . . . . .	391
Watkins, B. and Simkiss, K. The effect of oscillating temperatures on the metal ion metabolism of <i>Mytilus edulis</i> . . . . .	93
Wippelhauser, G.S. and McCleave, J.D. Rhythmic activity of migrating juvenile American eels <i>Anguilla rostrata</i> . . . . .	81
Youngbluth, M.J., <i>see</i> Pugh and Youngbluth . . . . .	1

## CORRIGENDA

Page 347, Table 1, line 2, column 4, for Blake (1975) read Lacalli (1981).

Page 348, line 7, for Blake (1975) read Lacalli (1981).

Index to Volume 67, p. ix

For: Ryan, T.H.

*See* Bone *et al.* 545

*See* Roden *et al.* 359

Read: Ryan, K.P. *See* Bone *et al.* 545

Ryan, T.H. *See* Roden *et al.* 359

# SUBJECT INDEX

## Behaviour

- Diurnal activity of burrowing polychaetes, 55-59
- Parental behaviour of the sea stickleback, 277-285
- Rhythmic swimming activity of young eels, 81-91
- Swimming behaviour of *Corophium volutator*, 565-579

## Biochemistry

- Acid secretion in marine organisms, 499-517
- Alkaline phosphatase activity in Channel waters, 239-250

## Breeding, Rearing and Fecundity

- Experimental rearing of oysters, 399-407
- Morphology of rock barnacles related to habitat, 591-599
- Reproduction of *Hydrobia ulvae*, 365-375

## Comparative Anatomy

- Allometric relationships between respiratory area and body mass in fishes, 489-498
- Morphology of rock barnacles related to habitat, 591-599
- Paragnaths of intertidal crustaceans, 581-590
- Possible phylogenetic relationship among tube-worms, Vestimentifera and Pogonophora, 465-487
- Two deepwater medusae, 689-699

## Development, Growth and Maturation

- Development of young vestimentiferans, 465-487
- Growth and age determination of bass, 179-214
- Larval development in cultured oysters, 399-407
- Larval development of *Sacculina*, 377-390
- Polychaete larvae in Galway Bay, 339-350
- Setal patterns in young terebellids, 677-687
- Settlement and metamorphosis in sabellariid polychaetes, 101-124

## Ecology and Distribution

- Bivalve dislodgement caused by algal growth, 219-233
- Copepods in the North Sea, 143-164
- Dinoflagellate cysts in Loch Creran, 701-714
- North Sea benthic environment, 125-141
- Pogonophora in Biscay canyons, 627-638
- Shark distribution inferred from bite wounds on swordfish, 315-321
- Starfish in the Bay of Brest, 41-54

## Genetics

- Isozymes of *Nereis*, 549-553
- Mortality in transplanted *Chlamys*, 251-258

## New Species

- Deepstaria reticulum* sp. nov., 691
- Enalcyonium confusum* n. sp., 358
- Halistemma transliratum* sp. nov., 1
- Leegaardiella ovalis* n. sp., 653
- Leegaardiella sol* n. gen., n. sp., 650
- Strobilidium epacrum* n. sp., 642
- Strobilidium multinucleatum* n. sp., 644
- Strobilidium sphaericum* n. sp., 646

## Parasitology

- Copepod parasites of *Alcyonium*, 351-359
- Larval development of *Sacculina carcini*, 377-390
- Parasites of whiting in the Severn Estuary, 295-313

## Phycology

- Alkaline phosphatase activity in Channel waters, 239-250
- Chlorophyll *a* fluorescence changes in the Bay of Biscay, 519-529
- Phytoplankton production in Belfast Lough, 555-564
- Salinity preference of *Vaucheria* spp., 531-545

## Physical Oceanography

- Fluorescence changes in the Bay of Biscay, 519-529
- North Sea benthic environment, 125-141

## Physiology and Experimental Biology

- Deformability of fish erythrocytes, 619-625
- Effect of light cycle and temperature on *Pectinaria*, 55-59
- Imposex in dog-whelks induced by six organotin compounds, 733-744
- Imposex in dog-whelks induced by TBT, 715-731
- Mortality in transplanted *Chlamys*, 251-258
- Physiological parameters and growth rate of rotifers, 165-177
- Temperature effects on metal metabolism, 93-100
- Temperature and salinity tolerance of molluscs, 15-23
- Zinc and cadmium uptake by polychaetes, 61-80
- Zinc regulation in Crustacea, 25-40

## Pollution Studies

- Imposex in dog-whelks induced by six organotin compounds, 733-744
- Imposex in dog-whelks induced by TBT, 715-731
- Zinc regulation in Crustacea, 25-40

## SUBJECT INDEX

### Population Studies

- Copepods in the North Sea, 143-164
- Echinoderm population off Brittany, 41-54
- Growth and ageing of bass, 179-214
- Herring and pilchards in the Western  
Approaches associated with climatic  
change, 423-445
- Inshore fish populations in Shetland, 601-617
- Whiting in the Severn Estuary, 295-313

### Structure and Histology

- Haemocytes in barnacles, 391-397
- Histology of the polychaete gut, 447-464
- Paragnaths of intertidal crustaceans, 581-590

- Respiratory epithelia in the mudskipper, 413-422
- Ultrastructure of the crustacean hepatopancreas,  
323-337

### Taxonomy and Life History

- Copepod parasites of *Alcyonium*, 351-359
- Description of seven ciliates, 639-658
- Key to the genus *Ampelisca*, 659-676
- Taxonomy of ten planktonic ciliates, 259-276

### Technique and Methodology

- A portable light-trap for crustaceans, 235-238
- An underwater event recorder, 287-293

# THE MARINE BIOLOGICAL ASSOCIATION OF THE UNITED KINGDOM

THE ASSOCIATION was founded in 1884 to promote accurate researches leading to the advancement of zoological and botanical science and to an increase in our knowledge of the food, life, conditions and habits of British fishes. The work of the Association is controlled by a Council elected annually by its subscribing members.

Professor T. H. Huxley took the chair at the initial meeting held in the rooms of the Royal Society and was elected the first President. Among those present were Sir John Lubbock (afterwards Lord Avebury), Sir Joseph Hooker, H. N. Moseley, Mr G. J. Romanes, and Sir E. Ray Lankester who, after Professor Huxley, was for many years president of the Association. It was decided to build a laboratory at Plymouth, where a rich and varied fauna is found.

The Plymouth Laboratory was opened in June 1888, and, since that date, considerable additions have been made to the buildings, including a library, lecture-hall, and extensive laboratory accommodation with up-to-date equipment. Additional sea-water reservoirs have also been built, and an aquarium, modernized in 1959, opened to the public.

Since its foundation the Association has been supported by subscriptions and donations from private members, universities, learned societies, the Fishmongers' Company and other public bodies. For some time past, however, the main financial support for the work of the Plymouth Laboratory has come from Government funds, and since 1965 the Laboratory has been grant-aided through the Natural Environment Research Council.

The Marine Biological Association, under the direction of its Council, undertakes research in all branches of marine science and the main results are published in this journal. Accounts of the laboratory and aquarium are to be found in Vol. 27 (p. 761), Vol. 39 (p. 391) and Vol. 43 (p. 281), and summaries of the activities and research of the Association are given annually in the Report of the Council in the November issue of the Journal.

The laboratory is open throughout the year and its work is carried out by a fully qualified research staff under the supervision of the Director. The names of the members of the staff will be found on the inner page of the front cover. Accommodation is available for British and foreign scientific workers who wish to carry out independent research in all branches of marine science. Arrangements are made for courses for advanced students, and marine animals and plants are supplied to educational institutions.

Work at sea is undertaken by three research vessels and by a motor boat, and these also collect the specimens required in the laboratory.

## TERMS OF MEMBERSHIP

	£
Annual Members, receiving the Journal . . . . . per annum	25.00
Annual Members, without the Journal . . . . . per annum	3.00
Founders . . . . .	100.00
Governors . . . . .	500.00

Annual subscriptions become due on 1 January.

Members of the Association have the following rights and privileges; they elect annually the Officers and Council; they are entitled to receive the Journal of the Association at a reduced rate; they are admitted to view the laboratory at Plymouth; they have the first claim to rent a place in the laboratory for research, with use of tanks, boats, etc.; they have the privilege of occupying a table for one week in each year free of charge; and they have access to the books in the library at Plymouth during working hours.

The Commissioners of Inland Revenue have approved the Association for the purposes of Section 16, Finance Act, 1958, and that the whole of the annual subscriptions paid by a member who qualifies for relief under the section will be allowable as a deduction from his emoluments assessable to income tax under Schedule E.

All correspondence should be addressed to the Director, The Laboratory, Citadel Hill, Plymouth, PL1 2PB.



## CONTENTS

	PAGE
PUGH, P. R. and YOUNGBLUTH, M. J. A new species of <i>Halistemma</i> (Siphonophora: Physonectae: Agalmidae) collected by submersible . . . . .	1
DAVENPORT, J. and BEARD, J. B. Observations on the temperature and salinity relations of <i>Lasaea rubra</i> . . . . .	15
NUGEGODA, D. and RAINBOW, P. S. Effect of a chelating agent (EDTA) on zinc uptake and regulation by <i>Palaemon elegans</i> (Crustacea: Decapoda) . . . . .	25
GULLOU, M. and DIOP, M. Ecology and demography of a population of <i>Anseropoda placenta</i> (Echinodermata: Asteroidea) in the Bay of Brest, Brittany . . . . .	41
NICOLAIDOU, A. Notes on the behaviour of <i>Pectinaria koreni</i> . . . . .	55
MASON, A. Z., JENKINS, K. D. and SULLIVAN, P. A. Mechanisms of trace metal accumulation in the polychaete <i>Neanthes arenaceodentata</i> . . . . .	61
WIPPELHAUSER, G. S. and MCCLEAVE, J. D. Rhythmic activity of migrating juvenile American eels <i>Anguilla rostrata</i> . . . . .	81
WATKINS, B. and SIMKISS, K. The effect of oscillating temperatures on the metal ion metabolism of <i>Mytilus edulis</i> . . . . .	93
PAWLIK, J. R. Larval settlement and metamorphosis of gregarious sabellariid polychaetes: <i>Sabellaria alveolata</i> compared with <i>Phragmatopoma californica</i> . . . . .	101
BASFORD, D. and ELEFThERIOU, A. The benthic environment of the North Sea (56° to 61°N) . . . . .	125
ROFF, J. C., MIDDLEBROOK, K. and EVANS, F. Long-term variability in North Sea zooplankton off the Northumberland coast: productivity of small copepods and analysis of trophic interactions . . . . .	143
SCOTT, J. M. Effect of growth rate on the physiological rates of a chemostat-grown rotifer <i>Encentrum linnhei</i> . . . . .	165
KELLEY, D. F. Age determination in bass and assessment of growth and year-class strength . . . . .	179
BOOK NOTICES . . . . .	215

© Copyright by the Marine Biological Association of the UK 1988

The *Journal of the Marine Biological Association* is published quarterly. The subscription price of volume 68, 1988 to non-members of the Association is £122 within the UK and £134 outside the UK but excluding North America. Subscription price in the USA and Canada is US \$265. The above prices are payable in advance and include postage. Single parts cost £34 (US \$73 in USA and Canada) plus postage. Subscriptions may be sent to any bookseller or to the publisher: Cambridge University Press, The Edinburgh Building, Shaftesbury Road, Cambridge CB2 2RU, or in USA and Canada, to Cambridge University Press, 32 East 57th Street, New York, 10022. Second class postage paid at New York, NY and at additional mailing offices. POSTMASTER: send address changes in the USA and Canada to *Journal of the Marine Biological Association*, Cambridge University Press, 32 East 57th Street, New York, NY 10022. All orders must be accompanied by payment.

CAMBRIDGE UNIVERSITY PRESS

THE PITT BUILDING, TRUMPINGTON STREET, CAMBRIDGE CB2 1RP

32 EAST 57TH STREET, NEW YORK, NY 10022, USA

10 STAMFORD ROAD, OAKLEIGH, MELBOURNE 3166, AUSTRALIA

Printed in Great Britain by the University Press, Cambridge