

INFECTION CONTROL AND HOSPITAL EPIDEMIOLOGY™

EDITORIAL

Development of Nursing Home Infection Control

PHILIP W. SMITH, MD

303

ORIGINAL ARTICLES

An Outbreak of Acute Gastroenteritis in a Geriatric Long-Term-Care Facility: Combined Application of Epidemiological and Molecular Diagnostic Methods

ARTHUR MARX, MD, MPH; DAVID K. SHAY, MD, MPH; JACQUELINE S. NOEL, BSC; CAROL BRAGE, RN, SDC; JOSEPH S. BRESEE, MD; SHERRY LIPSKY, PA-C, MPH; STEPHAN S. MONROE, PhD; TAMIE ANDO, PhD; CHARLES D. HUMPHREY, PhD; E. RUSSELL ALEXANDER, MD; ROGER I. GLASS, MD, PhD

306

Control of Transmission of Vancomycin-Resistant *Enterococcus faecium* in a Long-Term-Care Facility

MAXINE ARMSTRONG-EVANS, BASC; MARGARET LITT, BScN, MHSC; MARGARET A. MCARTHUR, RN; BARBARA WILLEY, ART; DARLENE CANN, RN; SUSAN LISKA, RN; SIDNEY NUSINOWITZ, MD; RICHARD GOULD, MD; ANNA BLACKLOCK, RN; DONALD E. LOW, MD; ALLISON MCGEER, MD

312

Enterococcal Bacteremia: Risk Factors for Vancomycin Resistance and Predictors of Mortality

EBBING LAUTENBACH, MD, MPH; WARREN B. BILKER, PhD; PATRICK J. BRENNAN, MD

318

The Mycobactericidal Efficacy of Ortho-Phthalaldehyde and the Comparative Resistances of *Mycobacterium bovis*, *Mycobacterium terrae*, and *Mycobacterium chelonae*

ADAM W. GREGORY, BS; G. BRUCE SCHAALJE, PhD; JONATHAN D. SMART, BS; RICHARD A. ROBISON, PhD

324

Occupational Injuries and Exposures Among Canadian Dentists: The Results of a National Survey

GILLIAN M. MCCARTHY, BDS, MSc; JOHN J. KOVAL, PhD; JOHN K. MACDONALD, MA

331

Trends in Compliance With the Guidelines for Preventing the Transmission of *Mycobacterium tuberculosis* Among New Jersey Hospitals, 1989 to 1996

LILIA P. MANANGAN, RN, MPH; EDGAR R. COLLAZO, MD; JEROME TOKARS, MD; SINDY PAUL, MD, MPH; WILLIAM R. JARVIS, MD

337

CONCISE COMMUNICATIONS

Lack of Transmission of Vancomycin-Resistant Enterococci in Three Long-Term-Care Facilities

CHRISTINA A. GREENAWAY, MD; MARK A. MILLER, MD

341

Hospital Water Supply as a Source of Disseminated *Mycobacterium fortuitum* Infection in a Leukemia Patient

JUHA KAUPPINEN, MSc; TAPIO NOUSIAINEN, MD; ESA JANTUNEN, MD; RAUNI MATTILA, MD; MARJA-LEENA KATILA, MD

343

Agrobacterium radiobacter as a Cause of Pseudobacteremia

ANNE-MARIE ROGUES, MD; JEAN SARLANGUE, MD, MSc; BERTILLE DE BARBEYRAC, PhD; HENRI-PIERRE DOERMAN, MD; CATHERINE HELMER, MD; JEAN-CLAUDE LABADIE, MD; CHRISTINE DELFEAU, MD; BORIS SANDLER, MD; CHRISTIANE BEBEAR, MD, PhD; JEAN-PIERRE GACHIE, MD, MPH

345

Changing Heat and Moisture Exchangers Every 48 Hours Does Not Increase the Incidence of Nosocomial Pneumonia

Françoise DAUMAL, MD; ERIC COLPART, MD; BENOÎT MANOURY, MD; MERCEDES MARIANI, PhD; MARC DAUMAL, MD

347

Bacteremia Due to Persistent Strains of Coagulase-Negative Staphylococci in a Neonatal Intensive-Care Unit

LILLIAN SUNG, MD; KARAM RAMOTAR, PhD; LINDY M. SAMSON, MD; BALDWIN TOYE, MD

349

Continued inside.

Reducing the incidence of nosocomial UTI

Are you even on the map?

The BARDEX® I.C. Foley Catheter can put you there.

Each year, over 900,000 nosocomial urinary tract infections occur in hospitals throughout the U.S. – seriously impacting quality of care.

The silver and hydrogel-coated BARDEX I.C. Foley Catheter has been proven to reduce the incidence of NUTIs. The published examples noted below are just a few of the more than 600 success stories involving hospitals that significantly reduced infection rates and costs after converting to the BARDEX I.C. system.

For more information on the BARDEX I.C. Foley Catheter, contact your BARD Representative or call 1-800-526-4455. You can also visit our website at www.bardmedical.com.

Graduate Philadelphia, PA
Graduate Philadelphia, PA
11,210 annual admissions
50% reduction in NUTI
AUA-1998⁷

Kaiser Permanente Sunnyside
Clackmas, OR
12,178 annual admissions
69% reduction in NUTI
APIC-1998⁸

St. Michael Health Care Ctr.
Texarkana, TX
3,919 annual admissions
56% reduction in NUTI
APIC-1997⁴

UVA
Charlottesville, VA
27,116 annual admissions
48% reduction in NUTI
SHEA-1998⁶

Poudre Valley
Fort Collins, CO
13,264 annual admissions
53% reduction in NUTI
APIC-1998³

U of W
Madison, WI
19,100 annual admissions
25% reduction in NUTI
ICAAC-1998⁵

N. Broward Hospital
Ft. Lauderdale, FL
23,327 annual admissions
58% reduction in NUTI
SHEA-1998⁶

Wilson Memorial Hospital
Wilson, NC
7,985 annual admissions
37% reduction in NUTI
APIC-1996⁴

BARD
Bard Medical Division
C.R. Bard, Inc.
8195 Industrial Boulevard

2. Hospital Epidemiology and Infection Control, 1996. Nosocomial Urinary Tract Infections,

5. Abstracts of 38th ICAAC, September 1998.
6. Infection Control and Hospital Epidemiology,

EDITORIAL OFFICES

Vanderbilt University School of Medicine
A-1131 Medical Center North
Nashville, TN 37232-2637
(615) 343-1095; (615) 343-1882 (FAX)
Email: iche@mcmail.vanderbilt.edu

EDITOR

Michael D. Decker, MD, MPH

MANAGING EDITOR

Susan Cantrell

STATISTICAL EDITOR

Beverly G. Mellen, PhD

SENIOR ASSOCIATE EDITORS

C. Glen Mayhall, MD

Gina Pugliese, RN, MS

William Schaffner, MD

ASSOCIATE EDITORS

Donald A. Goldmann, MD

Didier Pittet, MD, MS

Andreas Widmer, MD, MS

SECTION EDITORS**Beyond Infection Control:****The New Hospital Epidemiology**

Bryan P. Simmons, MD

Stephen B. Kritchewsky, PhD

Memphis, Tennessee

Wing Hong Seto, MD

Hong Kong

Disinfection and Sterilization

William A. Rutala, PhD, MPH

Chapel Hill, North Carolina

Emerging Infectious Diseases

Larry J. Strausbaugh, MD

Portland, Oregon

Robert W. Pinner, MD

Atlanta, Georgia

From the Laboratory

Marcus Zervos, MD

Royal Oak, Michigan

Fred C. Tenover, PhD

Atlanta, Georgia

Information Management

John A. Sellick, DO

Buffalo, New York

The International Perspective

Mary D. Nettleman, MD, MS

Richmond, Virginia

Issues in Surgery

James T. Lee, MD, PhD

St. Paul, Minnesota

Medical News

Gina Pugliese, RN, MS

Chicago, Illinois

Martin S. Favero, PhD

Irvine, California

Practical Healthcare Epidemiology

Loreen A. Herwaldt, MD

Iowa City, Iowa

SHEA News

Andreas Voss, MD, PhD

Nijmegen, The Netherlands

Statistics for Hospital Epidemiology

David Birnbaum, PhD, MPH

Sidney, British Columbia, Canada

Topics in Long-Term Care

Philip W. Smith, MD

Omaha, Nebraska

Topics in Occupational Medicine

David Weber, MD, MPH

Chapel Hill, North Carolina

INFECTION CONTROL AND HOSPITAL EPIDEMIOLOGY®

EDITORIAL ADVISORY BOARD

- | | |
|--------------------------------------|---|
| Jacques F. Acar, MD | Paris, France |
| J. Wesley Alexander, MD | Cincinnati, Ohio |
| Paul Arnow, MD | Chicago, Illinois |
| Graham A.J. Ayliffe, MD | Birmingham, United Kingdom |
| Neil L. Barg, MD | Yakima, Washington |
| Elizabeth Ann Bolyard, RN, MPH, CIC | Atlanta, Georgia |
| John M. Boyce, MD | Providence, Rhode Island |
| Professor Dr. Ilja Braveny | Munich, Federal Republic of Germany |
| Christian Brun-Buisson, MD | Creteil, France |
| Charles Bryan, MD | Columbia, South Carolina |
| Donald E. Craven, MD | Boston, Massachusetts |
| Sue Crow, MSN, RN, CIC | Shreveport, Louisiana |
| Franz Daschner, MD | Freiburg, Federal Republic of Germany |
| Leigh G. Donowitz, MD | Charlottesville, Virginia |
| Charles E. Edmiston, Jr., PhD | Milwaukee, Wisconsin |
| Theodore C. Eickhoff, MD | Denver, Colorado |
| Bruce Farber, MD | Manhasset, New York |
| Victoria J. Fraser, MD | St. Louis, Missouri |
| Peter C. Fuchs, MD, PhD | Black Butte, Oregon |
| Richard A. Garibaldi, MD | Farmington, Connecticut |
| Robert Gaynes, MD | Atlanta, Georgia |
| Velvi Greene, PhD, MPH | Beer Sheva, Israel |
| David W. Gregory, MD | Nashville, Tennessee |
| David K. Henderson, MD | Bethesda, Maryland |
| Peter N.R. Heseltine, MD | Los Angeles, California |
| Karen Hoffmann, RN, CIC, MS | Chapel Hill, North Carolina |
| Marguerite McMillan Jackson, RN, PhD | San Diego, California |
| Janine Jagger, MPH, PhD | Charlottesville, Virginia |
| William R. Jarvis, MD | Atlanta, Georgia |
| Douglas S. Kernodle, MD | Nashville, Tennessee |
| Robert H. Latham, MD | Nashville, Tennessee |
| Lewis B. Lefkowitz, MD | Nashville, Tennessee |
| Hsieh-Shong Leu, MD, MSc | Taipei, Taiwan |
| Jack Levy, MD | Brussels, Belgium |
| Victor Lorian, MD | Bronx, New York |
| Dennis G. Maki, MD | Madison, Wisconsin |
| Professor Dr. Walter Marget | Munich, Federal Republic of Germany |
| William J. Martone, MD | Bethesda, Maryland |
| Allison McGeer, MD | Toronto, Ontario, Canada |
| John E. McGowan, Jr., MD | Atlanta, Georgia |
| Jonathan L. Meakins, MD, DSc | Montreal, Quebec, Canada |
| Raf Mertens, MD | Brussels, Belgium |
| Robert R. Muder, MD | Pittsburgh, Pennsylvania |
| Joseph M. Mylotte, MD, CIC | Buffalo, New York |
| Lindsay Nicolle, MD | Winnipeg, Manitoba, Canada |
| Juhani Ojajarvi, MD | Helsinki, Finland |
| Michael T. Osterholm, PhD, MPH | Minneapolis, Minnesota |
| Jan Evans Patterson, MD | San Antonio, Texas |
| Sindy M. Paul, MD | Trenton, New Jersey |
| Michael A. Pfaller, MD | Iowa City, Iowa |
| Samuel Ponce de Leon, MD, MSc | Mexico City, Mexico |
| Isaam Raad, MD | Houston, Texas |
| Manfred L. Rotter, MD, DipBact | Vienna, Austria |
| Theodore Sacks, MD | Jerusalem, Israel |
| William E. Scheckler, MD | Madison, Wisconsin |
| Kent Sepkowitz, MD | New York City, New York |
| Denis Spelman, MD | Prahran Victoria, Australia |
| Michael L. Tapper, MD | New York, New York |
| Clyde Thornsberrry, PhD | Brentwood, Tennessee |
| Professor Leonid P. Titov | Minsk, Republic of Belarus |
| Timothy R. Townsend, MD | Millwood, Virginia |
| Antoni Trilla, MD, PhD | Barcelona, Spain |
| Professor Wang Shu-Qun | Beijing, People's Republic of China |
| J. John Weems, Jr., MD | Greenville, South Carolina |
| Robert A. Weinstein, MD | Chicago, Illinois |
| Professor Dr. W. Weuffen | Greifswald, Federal Republic of Germany |
| Sergio B. Wey, MD | São Paulo, Brazil |
| Rebecca Wurtz, MD | Evanston, Illinois |

SLACK Incorporated

6900 Grove Road
Thorofare, New Jersey 08086
(609) 848-1000

Vice President/Group Publisher
Richard N. Roash

Publisher
John C. Carter

Editorial Director
Jennifer Kilpatrick

Production Editor
Shirley P. Strunk, ELS

Assistant Editor
Eileen C. Anderer

Circulation Manager
Lester J. Robeson, CCCC

Production Director
Christine Malin

Production Coordinator
Joanne Patterson

Publishing Director/ Advertising
Wayne McCourt

Pharmaceutical Group Sales Director
Michael LoPresti

Advertising Sales Representative
Jennine Kane

Classified/Recruitment Sales Manager
Kathy Huntley

Classified/Recruitment Sales Representative
Carla Maxie

THE RESULTS ARE IN COOK SPECTRUM®

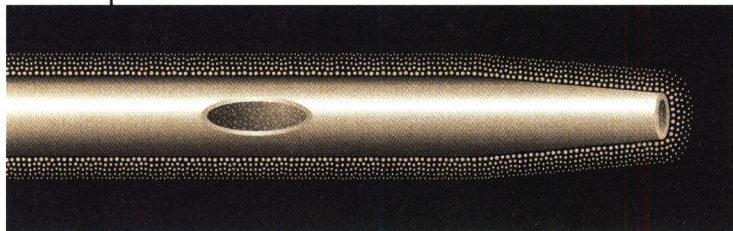
¹ R. Darouiche, I. Raad, S. Heard, J. Thornby, O. Wenker, A. Gabrielli, J. Berg, N. Khardori, H. Hanna, R. Hachem, R. Harris, and G. Mayhall for the Catheter Study Group: "A Comparison of Two Antimicrobial-Impregnated Central Venous Catheters," *New England Journal of Medicine*, Volume 340, Issue 1, (1999), 1-8.

² I. Raad, R. Darouiche, J. Dupuis, D. Abi-Said, A. Gabrielli, R. Hachem, M. Wall, R. Harris, J. Jones, A. Buzaid, C. Robertson, S. Shenaq, P. Curling, T. Burke, C. Ericsson, Texas Medical Center Catheter Study Group: "Central Venous Catheters Coated with Minocycline and Rifampin for the Prevention of Catheter-Related Colonization and Bloodstream Infections: A Randomized, Double-Blind Trial," *Annals of Internal Medicine*, 127 (1997), 267-274.

³ D. Pittet, R. Wenzel: "Nosocomial Bloodstream Infections in the Critically Ill, Letter to the Editor," *Journal of the American Medical Association*, 272 (1994), 1819-1820.

To learn how Cook Spectrum® can reduce infection rates in vascular access patients and significantly lower treatment costs, contact your COOK CRITICAL CARE representative. Or call COOK at 1-800 457-4500.

An extensive new study just published in *The New England Journal of Medicine* concludes that catheters impregnated with minocycline and rifampin are **twelve times less likely** to cause bloodstream infections than catheters impregnated with chlorhexidine and silver sulfadiazine.¹



Central venous catheters are vital to patient care, but they are also the leading cause of primary nosocomial bloodstream infection.²

A single episode of catheter-related septicemia can cost up to \$28,000 to treat (and an extra 6.5 days in the ICU).³

Cook Spectrum® antimicrobial central venous catheters are impregnated throughout their inner and outer surfaces with an effective combination of minocycline and rifampin to fight bacterial colonization and infections.

COOK®

LISTEN. UNDERSTAND. INNOVATE.

www.cookgroup.com

INFECTION CONTROL AND HOSPITAL EPIDEMIOLOGY™

CONTENTS

Continued from cover

Bacitracin Versus Mupirocin for <i>Staphylococcus aureus</i> Nasal Colonization NORBERTO E. SOTO, MD; ASHOK VAGHJIMAL, MD; ANNETTE STAHL-AVICOLLI, RPH, MS; JOHN R. PROTIC, MD; LARRY I. LUTWICK, MD; EDWARD K. CHAPNICK, MD	351
Outbreak of Methicillin-Resistant <i>Staphylococcus aureus</i> in a German Tertiary-Care Hospital REINHARD RÜCHEL, MD; HAMPARSUM MERGERYAN, MD; OLGA BOGER, MD; CHRISTIANE LANGEFELD, MD; WOLFGANG WITTE, PhD	353
Varicella Serological Status of Healthcare Workers as a Guide to Whom to Test or Immunize PHILIP ALFRED BRUNELL, MD, MS; DAVID WOOD, MD, MPH	355
TOPICS IN LONG-TERM CARE	
Infected Pressure Ulcers in the Long-Term-Care Facility PHILIP W. SMITH, MD; JOYCE M. BLACK, RNC, MSN; STEVEN B. BLACK, MD	358
Issues in the Management of Resistant Bacteria in Long-Term-Care Facilities SUZANNE F. BRADLEY, MD	362
LETTERS TO THE EDITOR	
Being Wired for a Year STEVEN J. SCHWEN, RN, CIC; T. GRACE EMORI, RN, MS; ROBERT P. GAYNES, MD	299
Biopsy Forceps as a Source of Bacterial Contamination Leading to Overgrowth of <i>Helicobacter pylori</i> Culture Medium With <i>Pseudomonas aeruginosa</i> C.L. COOPER, MD, FRCPC; M.J. ALFA, PhD; G.K. HARDING, MD, FRCPC	300
The Costa Rican Experience on the Serological Response to the Hepatitis B Vaccine in Health Professionals MARIA A. RUIZ, RN; WILBERT ALFARO-BOURROUET, MSc; IDIS FAINGEZICHT, MD	301
A Convenient Way to Avoid Venipuncture and Finger Contamination JACK W. SHIELDS, MD, MS	302
CORRECTIONS	302
BOOK REVIEW	
AIDS Clinical Trials (Finkelstein DM, Schoenfeld DA) GORDON DICKINSON, MD	367
1998 REVIEWERS	370
MEDICAL NEWS	
GINA PUGLIESE, RN, MS; MARTIN S. FAVERO, PhD	368
SHEA NEWS	
ANDREAS VOSS, MD, PhD	372

To view abstracts of these articles,
visit us on the Internet at <http://www.slackinc.com/general/iche>

THE PUBLICATION OF ADVERTISING IN THE JOURNAL DOES NOT CONSTITUTE ANY GUARANTEE OR ENDORSEMENT BY THE SOCIETY FOR HEALTHCARE EPIDEMIOLOGY OF AMERICA OR SLACK INCORPORATED OF THE ADVERTISED PRODUCT OR SERVICE OR OF CLAIMS MADE BY THE ADVERTISER. THE PUBLICATION OF ARTICLES AND OTHER EDITORIAL MATERIAL IN THE JOURNAL DOES NOT NECESSARILY REPRESENT THE POLICY RECOMMENDATIONS OR ENDORSEMENT BY THE SOCIETY.

PUBLISHER: Infection Control and Hospital Epidemiology (ISSN-0899-823X, Canadian GST#129780466) is published exclusively by SLACK Incorporated 12 times a year. Address: 6900 Grove Rd., Thorofare, NJ 08086. Telephone: (609) 848-1000.

SHEA: 19 Mantua Rd., Mt. Royal, NJ 08061; telephone, 609-423-0087; fax, 609-423-3420; e-mail address, sheahq@talley.com.

COPYRIGHT 1999 The Society for Healthcare Epidemiology of America, Inc., and SLACK Incorporated. All rights reserved. No part of this publication may be reproduced without written permission from the publisher. Printed in the USA.

SUBSCRIPTIONS: Requests should be addressed to the publisher (except Japan). In Japan, contact Woodbell Incorporated, 4-22-11, Kitakasai, Edogawaku, Tokyo 134, Japan. Subscription rates in the United States and possessions: Individual: One year-\$105.00; Two years-\$143.00; Three years-\$176.00; Institutional: One year-\$128.00; Two years-\$178.00; Three years-\$228.00. Fellows: \$52.50 per year with proof of training status. Canada: \$20.00 additional each year plus 7% for Canadian Goods & Services tax; Overseas surface, \$145.00 each year; Overseas air mail, \$190.00. Single copies of current issues may be obtained for \$15.00, United States and possessions; \$20.00 all other countries.

INSTRUCTIONS TO AUTHORS: Authors may submit manuscripts prepared in accordance with the 1997 revision of the "Uniform Requirements for Manuscripts Submitted to Biomedical Journals." The Uniform Requirements has been published in several journals, including *Infect Control Hosp Epidemiol* 1997;18:457-464 and *Ann Intern Med* 1997;126:36-47. A digital version is available on our web site (<http://www.slackinc.com/general/iche/ichehome.htm>). Submit to ICHE Editorial Offices, Vanderbilt University School of Medicine, A-1131 Medical Center North, Nashville, TN 37232-2637, USA. All submissions must be accompanied by copyright form(s) signed by all authors (see January issue or our web site).

REPRINTS: All requests to reprint or use material published herein should be addressed to Karen Lambertson, SLACK Incorporated, 6900 Grove Rd., Thorofare, NJ 08086. For reprint orders and prices, contact Karen Lambertson at (609) 848-1000. Authorization to photocopy items for internal or personal use, or the internal or personal use of specific clients, is granted by SLACK Incorporated, provided that the base fee of \$1.00 per copy, plus \$0.15 per page is paid directly to Copyright Clearance Center, 27 Congress St., Salem, MA 01970. This consent does not extend to other kinds of copying, such as for general distribution, resale, advertising and promotional purposes, or for creating new collective works.

CHANGE OF ADDRESS: Notice should be sent to the publisher 6 weeks in advance of effective date. Include old and new addresses with zip codes. The publisher cannot accept responsibility for undelivered copies. Periodicals postage paid at Thorofare, New Jersey 08086-9447 and at additional mailing offices. POSTMASTER: Send address changes to SLACK Incorporated, 6900 Grove Rd., Thorofare, NJ 08086.

INFECTION CONTROL AND HOSPITAL EPIDEMIOLOGY is listed in Index Medicus, Current Contents-Clinical Practice, Hospital Literature Index, Cumulative Index to Nursing & Allied Health Literature, Nursing Abstracts, Laboratory Performance Information Exchange System, and RNdex Top 100.

NOW AVAILABLE ON CD-ROM: INFECTION CONTROL AND HOSPITAL EPIDEMIOLOGY

1 9 8 8 - 1 9 9 8

Simplifying your reference library is easy, with 11 years of INFECTION CONTROL AND HOSPITAL EPIDEMIOLOGY now available on CD-ROM. As the official journal of the Society for Healthcare Epidemiology of America (SHEA), this ready reference will allow the user to quickly and easily access articles and studies from 1988-1998 that can help put current issues of epidemiology and infection control in perspective.

Easy and Convenient CD-ROM Technology

The INFECTION CONTROL AND HOSPITAL EPIDEMIOLOGY CD-ROM will take full advantage of the latest CD-ROM technology, including:

- searchable text
- annual indexes organized by category, page number, subject and author
- convenient updates
- PC and Mac compatibility

The INFECTION CONTROL AND HOSPITAL EPIDEMIOLOGY CD-ROM packs an enormous amount of information in a small space at a comparably small price! Adding 11 years of this informative journal to your library is a bargain, at special prices starting as low as \$147.

Money-Back Guarantee

The Society for Healthcare Epidemiology of America is always looking for innovative ways to keep you informed of important developments in infection control and hospital epidemiology. We are sure you will refer to the information in the INFECTION CONTROL AND HOSPITAL EPIDEMIOLOGY CD-ROM often. If you aren't satisfied, we offer a 30-day money-back guarantee.*

To order, call us at **800-257-8290** or **609-848-1000** (in NJ); or write to INFECTION CONTROL AND HOSPITAL EPIDEMIOLOGY
6900 Grove Rd., Thorofare, NJ 08086

Yes! Please send me the INFECTION CONTROL AND HOSPITAL EPIDEMIOLOGY CD-ROM. Enclosed is a check or money order for the amount/quantity checked below.

<input type="checkbox"/>	SHEA Member:	\$147.00 ea.	Qty: _____
<input type="checkbox"/>	Individual Non-Member:	\$197.00 ea.	Qty: _____
<input type="checkbox"/>	Institution:	\$247.00 ea.	Qty: _____

Or bill my Visa Mastercard Amex

Acct. No. _____ Exp. date: ____/____/____

Signature: _____

Send CD-ROM to:

Name _____

Address _____

City _____ State _____ Zip _____

Phone _____ FAX _____

Send order and make check payable to:

INFECTION CONTROL AND HOSPITAL EPIDEMIOLOGY • 6900 Grove Rd. • Thorofare, NJ 08086

Or FAX your order to: (609) 853-5991

For fastest service, call today, 1-800-257-8290 or 609-848-1000 (in NJ)



*If not completely satisfied with the INFECTION CONTROL AND HOSPITAL EPIDEMIOLOGY CD-ROM, just return it within 30 days and your money will be refunded.



Infection Control Coordinator

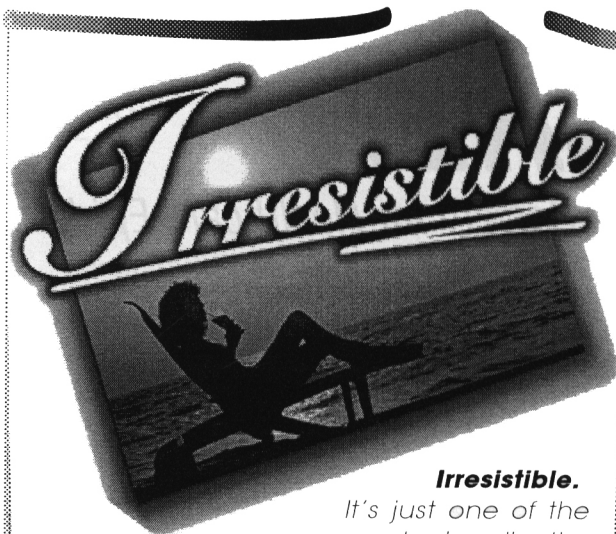
Greenwich Hospital, a 160-bed community hospital with satellite centers, is looking for a full-time Infection Control Coordinator to join our Infection Control team. This professional will coordinate Infection Control activities along with some Employee Health functions in our new, state-of-the-art hospital. We are looking for a highly motivated, creative and autonomous individual.

The ideal candidate must possess a Connecticut RN license, BSN, BA or BS (Master's preferred). CIC with at least 2 years of Infection Control experience required.

We offer a highly competitive salary and an excellent benefits package. Interested individuals are encouraged to forward a resume to: **Greenwich Hospital, Human Resources-LM, 5 Perryridge Road, Greenwich, CT 06830. Fax: 203-863-3149.** An equal opportunity employer.

Infection Control Coordinator

UPMC Shadyside is seeking a skilled, professional clinical nurse to assume a multi-faceted role. Major job responsibilities would include: coordinating the duties of the Infection Control Practitioners, conducting surveillance, participating in special studies designed to evaluate potential problems, communicating with various health agencies with regard to reportable diseases, handling data entry and analysis, and lending support in the development, review and implementation of all Infection Control policies and procedures. Conducting Infection Control orientation for new employees, departmental in-services and education sessions for all hospital staff are other accountabilities of Coordinator. The incumbent is also involved in organizing the activity of the Infection Control Committee. The ideal candidate must be a RN with current license to practice in Pennsylvania and certified in Infection Control. An extensive Infection Control background of at least 5-7 years and previous computer skills are necessary. Knowledge of government regulations and a proficiency in statistical analysis are preferred. Prior supervisory experience is requisite. Excellent interpersonal and group presentation skills, to enable positive interaction with all hospital personnel, are vital. The ability to work daylight and rotate evening/weekend on call is essential. Human Resources, 5230 Centre Avenue, Pittsburgh, PA 15232, Attn: Kathy Saksa



Irresistible.

*It's just one of the many ways to describe the excellent lifestyle you'll enjoy in the beautiful port city of Wilmington, NC. Just minutes from the coastal beaches, our thriving community offers the best in recreation, education and culture. Our city also offers the best in medical care at **New Hanover Regional Medical Center** a 628-bed teaching and referral facility. We currently have an immediate opportunity for a:*

NURSE EPIDEMIOLOGIST (Infection Control)

Responsibilities include conducting surveillance, chart reviews and evaluating epidemiological activities hospital-wide; performs statistical analysis on nosocomial data; identifies outbreaks of infections, investigates infection clusters and initiates control measures.

Position requires an RN with BSN or BS in a health related field, (CIC preferred) with 5 years clinical experience and at least 2 years of infection control experience.

We offer an attractive salary/benefits package, an exceptional state-of-the-art setting, and abundant opportunity for growth. Please fax or mail your resume, with references, to: **Manager of Employment Services, New Hanover Regional Medical Center, P.O. Box 9000, Wilmington, NC 28402-9000, Fax (910) 343-7817.** An Equal Opportunity Employer



New Hanover Regional
Medical Center

www.nhrmc.org



The Society for Healthcare Epidemiology of America

1999 SHEA/CDC

Training Course in Hospital Epidemiology

Program

The program will be held May 1-4, 1999 at the Wyndham Franklin Plaza Hotel, Philadelphia, Pennsylvania. Timothy W. Lane, M.D., Gina Pugliese, R.N., and Julie Gerberding, M.D. will chair the program.

Purpose

This program, developed by the Society for Healthcare Epidemiology of America (SHEA), and the Centers for Disease Control and Prevention (CDC), is intended for infectious disease fellows and new hospital epidemiologists. It emphasizes hands-on exercises in which participants work in small groups to detect, investigate, and control epidemiological problems encountered in the hospital setting. These work sessions are supplemented with lectures and seminars covering fundamental aspects of hospital epidemiology and surveillance, epidemic investigation, transmission and control of nosocomial infections, disinfection and sterilization, employee health, isolation systems, regulatory compliance, and quality improvement.

Who Should Attend

You should attend if you are a hospital epidemiologist or an infection control practitioner or if you are looking for a course that will provide you the most current information concerning infection control practices and epidemiological methods in health care. This fundamental program will provide you with the opportunities to find solutions to real situations that will occur in the hospital setting. Intensive problem solving sessions are supplemented with lectures and seminars presented by leading authorities.

Scholarships

Scholarships in the amount of \$1,000 will be awarded to infectious disease fellows for the program to defray the special course fee for fellows of \$350 and expenses incurred in attending the training program.

Interested fellows must submit a letter of no more than one page describing why they would like to have additional training in hospital epidemiology. A letter from the fellow's program director outlining the applicant's qualifications and suitability for the course also is required. The deadline for receipt of scholarship applications for the course is March 26, 1998.

The SHEA Educational Activities Committee will select the scholarship recipients based on review of these letters. Winners will be notified in September.

Nominations

Please send scholarship applications to:

Timothy W. Lane, M.D.
c/o The Society for Healthcare Epidemiology of America
19 Mantua Road
Mt. Royal, NJ 08061

Fees

Individual Registrants	\$495
Fellows in Infectious Disease	\$350

Credits

The Society for Healthcare Epidemiology of America (SHEA) is accredited by the Accreditation Council for Continuing Medical Education to sponsor continuing medical education for physicians.

SHEA designates this continuing education activity for up to 23 hours in Category 1 of the Physician's Recognition Award of the American Medical Association.

The SHEA/CDC Training Course is AACN (American Association of Critical Care Nurses) approved for 28.5 hours.

General Course Information

Information regarding the schedule, hotel and travel accommodations, discount airfare, and course fees are available from SHEA (609) 423-7222 x350. Note that application for a scholarship does not constitute enrollment in the program. This must be done separately.

Scholarship Awards provided in part by an educational grant from Pfizer Pharmaceuticals.



Labs • NHO • Pratt • Roerig • Specialty
U.S. Pharmaceuticals Group